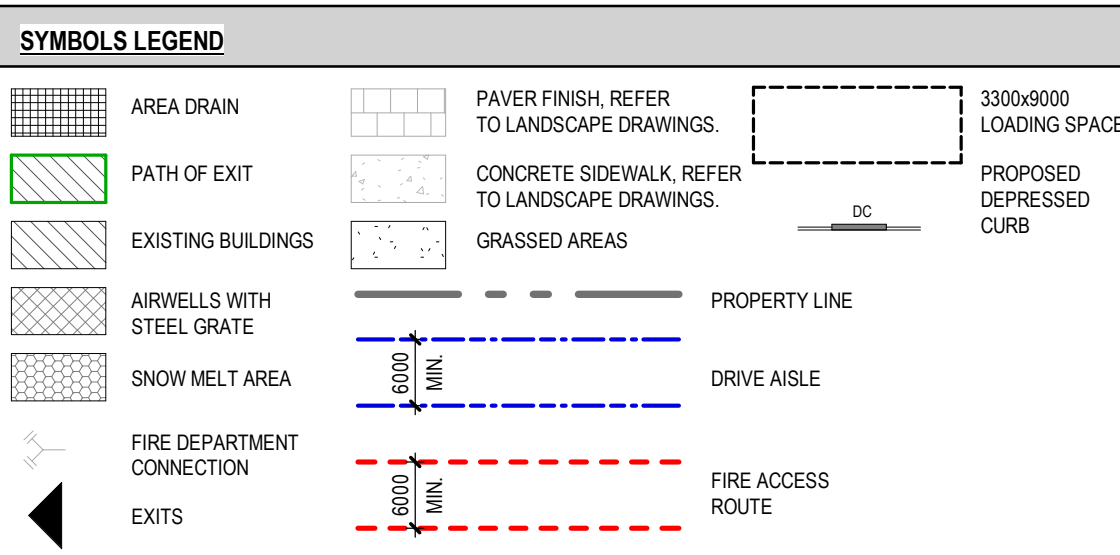


BUILDING CODE MATRIX - GROSS FLOOR AREAS					
GROSS FLOOR AREA	AREA (m ²)	AREA (ft ²)	# OF FLOORS	TOTAL AREA (m ²)	TOTAL AREA (ft ²)
R.L.S. P3.5 & P2.5 LEVELS	1 560 m ²	16 790.0 ft ²	0	0 m ²	0 ft ²
P1.5 LEVEL	1 643 m ²	17 680.1 ft ²	0	0 m ²	0 ft ²
GROUND FLOOR	1 452 m ²	15 631.7 ft ²	1	1 452 m ²	15 632 ft ²
2ND FLOOR	1 479 m ²	15 920.5 ft ²	1	1 479 m ²	15 921 ft ²
3RD FLOOR	864 m ²	9 256.8 ft ²	1	864 m ²	9 257 ft ²
4th & 17th TYPICAL FLOOR	609 m ²	6 554.1 ft ²	2	1 218 m ²	13 108 ft ²
5th to 16th TYPICAL FLOOR	620 m ²	6 674.6 ft ²	12	7 441 m ²	80 095 ft ²
18th FLOOR PENTHOUSE	249 m ²	2 679.0 ft ²	1	249 m ²	2 679 ft ²
Gross Area	8 475 m²	91 226.6 ft²		12 703 m²	136 731 ft²

Gross Area means the total area of all floors above grade measured between the outside surfaces of exterior walls.

NOTES

FOR EXISTING SITE CONDITIONS, PROPERTY BOUNDARY INFORMATION, AND CONFIGURATION OF LOT PARTS SEE SURVEY PLAN BY ANNIS, O'SULLIVAN, VOLLEBEKK LTD., REGISTERED PLANS 44R-36923, SUBMITTED SEPARATELY. FOR PROPERTY IDENTIFICATION NUMBERS (PIN) FOR PART OF LOT 18, 19, 20 (SOUTH YORK STREET) AND PART OF LOT 18, 19, 20 (NORTH GEORGE STREET), REFER TO SURVEY PLAN BY ANNIS, O'SULLIVAN, VOLLEBEKK LTD. FOR EXISTING & NEW GRADES AND SITE SERVICES, SEE CIVIL ENGINEERING PLANS BY NOVATECH ENGINEERING CONSULTANTS, SUBMITTED SEPARATELY. FOR NEW LANDSCAPING DESIGN, SEE LANDSCAPING PLANS BY JAMES B. LENNOX & ASSOCIATES, SUBMITTED SEPARATELY. FOR PROPOSED LIGHTING LAYOUT, SEE ELECTRICAL ENGINEERING PLANS BY JAIN CONSULTING, SUBMITTED SEPARATELY. ZONING GFA INCLUDES AREA MEASURED FROM THE INTERIORS OF OUTSIDE WALLS, AS DEFINED IN CITY OF OTTAWA ZONING BY-LAW DEFINITION (2008-250). SNOW STORAGE: SNOW WILL BE HAULED OFF SITE.



ZONING MECHANISM	SOLID WASTE COLLECTION REQUIREMENTS	
	REGULATION	PROPOSED
Hotel Waste	Garbage (Compacted) = 0.053y ³ /unit Require 19y ³	Garbage (Compacted) = 3 x 8y ³ containers Total = 24y ³
York - 154 units Andaz - 200 units Total = 354 units	Recycling (GMP) = 0.018y ³ /unit Require 7y ³	Recycling (GMP) = 2 x 8y ³ containers Total = 16y ³
	Recycling (Fibres) = 0.038y ³ /unit Require 14y ³	Recycling (Fibres) = 2 x 8y ³ containers Total = 16y ³
	Organics = 240L container/50 units Require 8 containers	Organics = 8 x 240L containers Total = 1920L

OCCUPANCY	UNITS / STOREYS	PROPOSED ZONING GFA
Hotel Rooms	4th and 17th floors (11 rooms/floor) 5th to 16th floors (11 rooms/floor)	424m ² x 2 floors= 848m ² 443m ² x 12 floors=5,316m ² TOTAL = 6,164m ²
	Minimum 10% of rooms are required to be Barrier-Free (BF) and distributed throughout the storeys.	22 of 154 units (14%) provided
Assembly	Ground floor	647m ² /floor
Hotel Administration	2nd floor 3rd floor	341m ² /floor 94m ² /floor
		TOTAL = 1,582m ²
TOTAL		7,746m²

MIXED-USE WITH GROUND FLOOR COMMERCIAL - ZONING - MD2 (2919) S489/ MD2 (113) S74 (COMBINED WITH 141 GEORGE STREET - MD2 (2031) S307)

ZONING RULE	REQUIREMENT	PROVIDED
Minimum lot area	No minimum	Combined lots 141 George Street = 3,109.10m ² 110 York = 520.72m ² 116 York = 1,015.88m ² = 4,645.70m ²
Minimum lot width	No minimum	40.47m along York Street
Minimum front yard	Maximum 1m	0.13m
Minimum interior side yard	No minimum	West side: connected to adjacent hotel. East side: 0.49m
Minimum rear yard	No minimum	Combined lot with 141 George Street. 1.13m, 5.48m and 5.77m.
Maximum building height	12m high within 9m from York. 52m high overall 12m high within 8m from back. As per OUTDATED Schedule 489; not including 116 York.	12.6m within 10m from York and Podium. (3 storey max) 54.3m Tower.
Maximum floor space index	Not applicable	
Minimum width of landscape area	No minimum except that where a yard is provided and not used for required driveways, aisles, parking, loading spaces, or outdoor commercial patio, the whole yard must be landscaped.	Yard used for required driveway, aisles and loading spaces, otherwise whole yard to be landscaped.
Provisions for buildings 10 storeys and higher (By-law 2019-353)	Not applicable. As per Exception 2919 (By-law 2023-502)	
Ground floor use	100% of ground floor fronting a street (excluding lobby area, mechanical room, and access to other floors for a minimum depth of 3m, must be occupied by permitted use. Total gross area of lobbies, mechanical rooms and access to other floors must not exceed 50% of ground floor gross area. Hotel lobby may be included in the calculation of ground floor frontage. As per Exception 2919 (By-law 2023-502)	100% of ground fronting York Street (excluding exits from other floors) for a minimum depth of 3m, is occupied by permitted Hotel use. Total gross area of lobbies, mechanical rooms and access to other floors does not exceed 50% of ground floor gross area. Permitted Hotel use occupies more than 50% of ground floor and separate and direct access is provided on York and Dalhousie Street from existing Hotel building.

AMENITY AND PARKING REQUIREMENTS
ZONING - 110 YORK - MD2 (2919) S489
116 YORK - MD2 (113) S74
(COMBINED WITH 141 GEORGE STREET - MD2 (2031) S307)

ZONING MECHANISM	REGULATION	PROPOSED
Shared Parking 141 GEORGE	None required for Hotel, Residential or Commercial use. 25 visitor parking spaces required (0.083 spaces per unit (Exception 2031))	P1 29 spaces (13 reduced) P2 44 spaces (14 reduced) P3 44 spaces (14 reduced) P4 46 spaces (14 reduced) 6.0m drive aisle provided.
110 & 116 YORK		P1 16 spaces (11 reduced) P2 38 spaces (11 reduced) P3 41 spaces (10 reduced) P4 41 spaces (10 reduced) Total: 299 spaces shared between building users. (97 reduced 32%) 141 George 163 spaces (65 reduced 34%) 110 York 136 spaces (42 reduced 31%) 25 Visitor parking shown on P3 & P4.
Barrier-Free Parking Combined 110-116 York & 141 George	251-300 spaces requires 8 barrier-free spaces 4 type As 4 type Bs (Traffic and Parking By-Law 2017-301)	York P1,P2- 1 type A & 1 type B P3,P4 - 1 type B per floor George P1,P3,P4 - 1 type A per floor Total: 9 spaces 5 type As + 4 type Bs
Minimum Bicycle Parking 141 GEORGE	Residential: 0.5 spaces x 297 units = 149 bicycle parking spaces Retail: 1 space per 250m ² of GFA 468m ² GFA / 250m ² = 2 bicycle parking spaces Hotel: 1 per 1000m ² of GFA +7,746m ² GFA/1,000m ² = 8 bicycle parking spaces Minimum 50% to be horizontal racks.	Residential: 56 (P1) 70 (P2) 31 (P3) Total 157 spaces Retail: 5 (Exterior) Hotel: 9 (Interior) Total: 171 spaces 76 (~44%) vertical mount
110 & 116 YORK		Hotel: 9 (Interior) Total: 171 spaces 76 (~44%) vertical mount
Loading (110-116 York)	2 spaces required. Minimum 3.3m width of a loading space. As per Exception 2919 (By-law 2023-502)	2 outdoor spaces provided. 3.3m wide x 9m length for parallel application.

- GENERAL NOTES**
- These architectural documents are the exclusive property of NEUF architect(e)s inc. and cannot be used, copied, or reproduced without written pre-authorization.
 - The contractor is responsible for checking and verifying all dimensions with respect to the project. Any discrepancy shall be reported to the architect.
 - The architect must be notified of all errors, omissions, and discrepancies between these documents and those of the other professionals.
 - Do not scale drawings. The dimensions on these documents must be read and not measured.
 - These drawings are to be read in conjunction with all material relevant to the project.

Mechanical - Electrical Engineer
JAIN
7405 East Danbro Crescent, 2nd Floor Mississauga, Ontario, L4N 6P8
T 905 285 9900 jainconsultants.com

Structural Engineer
ADJELIAN ALLEN RUBELI LIMITED
75 Albert Street, Suite 1005, Ottawa, Ontario K1P 5E7
T 613 232 5786 aar.ca

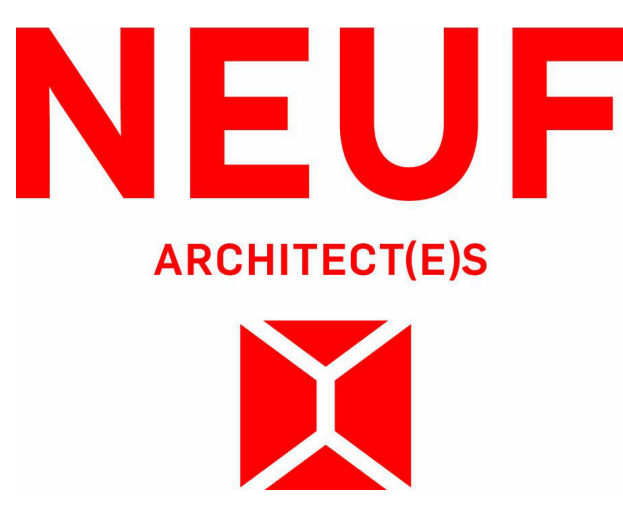
Landscape Architect
James B. Lennox & Associates
5555 Carling Avenue, Ottawa ON K2M 5A6
T 613 722 5168 jbla.ca

Civil
Novatech Eng. Consultants Ltd.
240, Michal Cowland Drive, Suite 200, Ottawa ON K2M 1P6
T 613 234 9653 novatecheng.com

Architect
NEUF Architectes INC.
10 Rideau Street, 4th floor, Ottawa ON K1N 9J1
T 514 947 1117 neuf.ca

Interior Design
Mason Studio
51 Pabam Avenue, Toronto ON M6N 1A5
T 416 761 9798 masonstudio.com

SURVEYOR
ANNIS O'SULLIVAN VOLLEBEKK Ltd.
14 Concourse Gate, Suite 500, Nepean ON K2E 7S6
T 613 277 0650 aovl.com



505 Preston St, 2nd Floor, Ottawa ON, K1S 4N7
T 613 219 8503 claridgehomes.com

Project
110-116 YORK STREET

Location No.
OTTAWA 13098.00

NO	REVISION	DATE (yyyy.mm.dd)
NNN	FOR SITE PLAN APPROVAL	2025.06.30
PPP	FOR HH SD REVIEW #7	2025.07.03
QQQ	FOR SITE PLAN APPROVAL	2025.07.15
TTT	FOR COORDINATION	2025.08.08
UUU	ISSUED FOR PERMIT	2025.08.12
VVV	FOR SITE PLAN APPROVAL	2025.09.15
XXX	FOR REVISED SUPERSTRUCTURE PERMIT	2025.09.22
YYY	FOR COORDINATION	2025.10.03
ZZZ	FOR COORDINATION	2025.11.05
BBB	FOR COORDINATION	2025.11.10
CCC	FOR SITE PLAN APPROVAL	2025.11.11
EEE	FOR SITE PLAN APPROVAL	2025.12.08
FFF	FOR TENDER	2025.12.10
GGG	FOR SITE PLAN APPROVAL	2025.12.19
MMM	ADDENDUM #3	2026.02.09
NNN	FOR REVISED SUPERSTRUCTURE PERMIT	2026.02.10
TTT	FOR REVISED SITE PLAN APPROVAL	2026.03.27

Drawn by
SJ/AA

Checked by
LH

DATE (aa.mm.jj)
MAY 2023

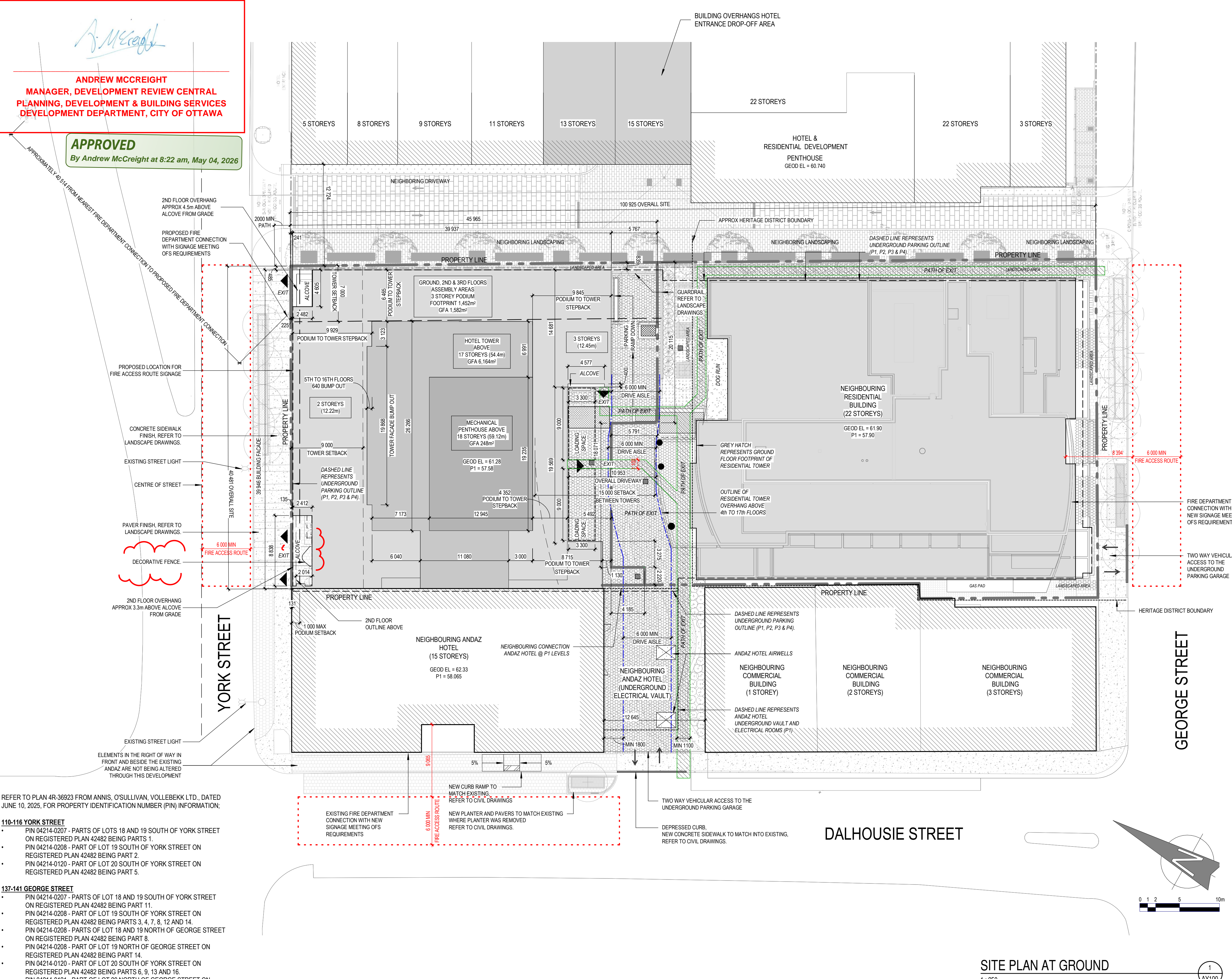
Scale
As indicated

Drawing Title
SITE PLAN

Revision Dwg Number
TTTT AY100

ANDREW MCCREIGHT
MANAGER, DEVELOPMENT REVIEW CENTRAL
PLANNING, DEVELOPMENT & BUILDING SERVICES
DEVELOPMENT DEPARTMENT, CITY OF OTTAWA

APPROVED
By Andrew McCreight at 8:22 am, May 04, 2026



- REFER TO PLAN 4R-36923 FROM ANNIS, O'SULLIVAN, VOLLEBEKK LTD., DATED JUNE 10, 2025, FOR PROPERTY IDENTIFICATION NUMBER (PIN) INFORMATION;
- 110-116 YORK STREET**
- PIN 04214-0207 - PARTS OF LOTS 18 AND 19 SOUTH OF YORK STREET ON REGISTERED PLAN 42482 BEING PARTS 1.
 - PIN 04214-0208 - PART OF LOT 19 SOUTH OF YORK STREET ON REGISTERED PLAN 42482 BEING PART 2.
 - PIN 04214-0120 - PART OF LOT 20 SOUTH OF YORK STREET ON REGISTERED PLAN 42482 BEING PART 5.
- 137-141 GEORGE STREET**
- PIN 04214-0207 - PARTS OF LOT 18 AND 19 SOUTH OF YORK STREET ON REGISTERED PLAN 42482 BEING PART 11.
 - PIN 04214-0208 - PART OF LOT 19 SOUTH OF YORK STREET ON REGISTERED PLAN 42482 BEING PARTS 3, 4, 7, 8, 12 AND 14.
 - PIN 04214-0208 - PARTS OF LOT 18 AND 19 NORTH OF GEORGE STREET ON REGISTERED PLAN 42482 BEING PART 8.
 - PIN 04214-0208 - PART OF LOT 19 NORTH OF GEORGE STREET ON REGISTERED PLAN 42482 BEING PART 14.
 - PIN 04214-0120 - PART OF LOT 20 SOUTH OF YORK STREET ON REGISTERED PLAN 42482 BEING PARTS 6, 9, 13 AND 16.
 - PIN 04214-0121 - PART OF LOT 20 NORTH OF GEORGE STREET ON REGISTERED PLAN 42482 BEING PARTS 10 AND 15.

SITE PLAN AT GROUND
1:250
AY100

Andrew McCreight

ANDREW MCCREIGHT
 MANAGER, DEVELOPMENT REVIEW CENTRAL
 PLANNING, DEVELOPMENT & BUILDING SERVICES
 DEVELOPMENT DEPARTMENT, CITY OF OTTAWA

APPROVED
 By Andrew McCreight at 8:22 am, May 04, 2026

NOTE	DESCRIPTION
1	GRANITE PANEL WALL BASE, JET MIST COLOUR, FLAMED FINISH. REFER TO ELEVATIONS FOR SIZE
2	MASONRY BRICK VENEER, RED COLOUR CLOSELY MATCHING ORIGINAL BUILDING FINISHES. COLOUR WILLIAMSBURG MK2 BY CANADA BRICK UNIT METRIC NORMAN FORMAT 57x260x90mm. ALL GROUT AND SEALANTS TO BE CONFIRMED BY THE ARCHITECT.
2P	PRECAST CONCRETE PANELS, RED COLOUR CLOSELY MATCHING BRICK VENEER. FORMAT 57x260x90mm. ALL GROUT AND SEALANTS TO BE CONFIRMED BY ARCHITECT.
3	MASONRY BRICK VENEER, SILVER CITY WIRECUT MODULAR UNITS FROM GLEN-GERY, 57x194x92D. ALL GROUT AND SEALANTS TO MATCH BRICK COLOUR.
4D	PRE-FINISHED ALUMINUM MODULAR PANELS, COLOUR TO MATCH MULLIONS ACRYNAR CHARCOAL GRAY (UCFX10080)
4L	LIGHT GREY PRE-FINISHED ALUMINUM MODULAR PANELS, CLEAR ANOZOD COLOUR TO MATCH EXISTING ANDAZ COLOUR.
5	CURTAIN WALL, SEALED GLASS UNIT / PREPAINTED ALUMINUM FRAME, ACRYNAR CHARCOAL GRAY (UCFX10080) COLOUR EXTERIOR AND CLEAR ANOZOD (200A/300A) INTERIOR SEE CURTAIN WALL ELEVATION PAGE.
6	WINDOW WALL, SEALED GLASS UNIT / PREPAINTED ALUMINUM FRAME, ACRYNAR CHARCOAL GRAY (UCFX10080) COLOUR EXTERIOR AND CLEAR ANOZOD (200A/300A) INTERIOR SEE WINDOW WALL ELEVATION PAGE.
7	PREPAINTED HORIZONTAL STEEL CLADDING, COLOUR TO MATCH ADJACENT WALL FINISH.
8	PERFORATED METAL SCREEN HANGING IN FRONT OF MECHANICAL LOUVER WITHIN WINDOW SYSTEM. COLOUR TO BE CONFIRMED BY ARCHITECT/INTERIOR DESIGNER.
9	PREPAINTED ALUMINUM VENTILATION GRILLE, COLOUR TO MATCH ADJACENT WALL FINISH. COORDINATION WITH MECHANICAL DRAWINGS FOR LOCATION.
9W	PREPAINTED ALUMINUM VENTILATION GRILLE, COLOUR TO MATCH ACRYNAR CHARCOAL GRAY (UCFX10080) WITHIN WINDOW SYSTEM. COORDINATION WITH MECHANICAL DRAWINGS FOR LOCATION.
10	PARAPET, COLOUR TO MATCH BRICK (ITEM 3 ON LEGEND).
10C	ARCHITECTURAL CORNICE OF BENT METAL FLASHING, COLOUR TO MATCH ACRYNAR CHARCOAL GRAY (UCFX10080).
11	PUNCHED WINDOW MULLIONS TO MATCH ITEM 6.
12	STEEL DOOR, COLOUR TO MATCH ADJACENT WALL FINISH.
13	GLAZED ENTRY DOOR, SEALED CLEAR GLASS UNIT / PREPAINTED ALUMINUM FRAME. SEE DOOR SCHEDULE PAGE. COLOUR TO MATCH CURTAIN WALL (ITEM 5 ON LEGEND).
13A	AUTOMATIC SLIDING GLAZED ENTRY DOOR, SEALED CLEAR GLASS UNIT / PREPAINTED ALUMINUM FRAME. SEE DOOR SCHEDULE PAGE. COLOUR TO MATCH CURTAIN WALL (ITEM 5 ON LEGEND).
14	FIRE DEPARTMENT CONNECTION, REFER TO CIVIL.
15	HEAVY DUTY RUBBER ROLL-UP DOOR, COLOUR AS PER MANUFACTURER STANDARD BLACK OR DARK GREY.
16	TYPICAL PAINTED STEEL BOLLARD, FILLED WITH CONCRETE.
17	WALL MOUNTED WALL PROTECTION, EXTRUDED RUBBER FENDER, REFER TO SPEC.
18	OVERFLOW SCUPPER, COLOUR TO MATCH ADJACENT EXTERIOR FINISH.
19	SIGNAGE, EXACT SIZE, COMPOSITION AND LOCATION TO BE DETERMINED BY THE RETAILER IN COORDINATION WITH CITY REQUIREMENTS.
21	SPANDREL GLASS CLADDING (OPAQUE) WITH PREPAINTED ALUMINUM FRAMING, COLOUR TO MATCH ITEM 5.
22	GLAZED SOUND BARRIER, MINIMUM 6mm THICK GLASS WITH FROSTED BIRD SAFE FINISH TO EXTERIOR FACE. POSTS TO BE GALVANIZED STEEL.
23	VERTICAL MASONRY CONTROL JOINT, 25mm SEALANT ON BACKER ROD. USED AS TYPICAL CONTROL MOVEMENT JOINTS AND VERTICAL TRANSITIONS BETWEEN DIFFERING COLOURED BRICK VENEERS.

- GENERAL NOTES**
- These architectural documents are the exclusive property of NEUF architect(e)s inc. and cannot be used, copied, or reproduced without written pre-authorization.
 - The contractor is responsible for checking and verifying all elevations with respect to the project. Any discrepancy shall be reported to the architect.
 - The architect must be notified of all errors, omissions, and discrepancies between these documents and those of the other professionals.
 - Do not scale drawings. The dimensions on these documents must be read and not measured.
 - These drawings are to be read in conjunction with all material relevant to the project.

Mechanical - Electrical Engineer
JAIN
 7405 East Danbro Crescent, 2nd Floor Mississauga, Ontario, L5N 6P8
 T 905 285 9900 | jainconsultants.com

Structural Engineer
ADJELIAN ALLEN RUBELI LIMITED
 75 Albert Street, Suite 1005, Ottawa, Ontario K1P 5E7
 T 613 232 5766 | ar.ca

Landscaping Architect
James B. Lennox & Associates
 5535 Carling Avenue, Ottawa ON K2H 5A6
 T 613 722 5168 | jba.ca

Civil
Novatech Eng. Consultants Ltd.
 240, Michal Cowland Drive, Suite 200, Ottawa ON K2M 1P6
 T 613 234 9653 | novatech-eng.com

Architect
NEUF Architectes INC.
 10 Rideau Street, 4th floor, Ottawa ON K1N 9J1
 T 514 947 1117 | neuf.ca

Interior Design
Mason Studio
 51 Palham Avenue, Toronto ON M6N 1A5
 T 416 781 9736 | masonstudio.com

SURVEYOR
ANNIS O'SULLIVAN VOLLEBEKK Ltd.
 14 Concourse Gate, Suite 500, Nepean ON K2E 7S6
 T 613 727 0650 | annisof.com



Client
CLARIDGE HOMES
 505 Preston St, 2nd Floor, Ottawa ON, K1S 4N7
 T 613 219 8503 | claridgehomes.com

Project
110-116 YORK STREET

Location
 OTTAWA No. 13098.00

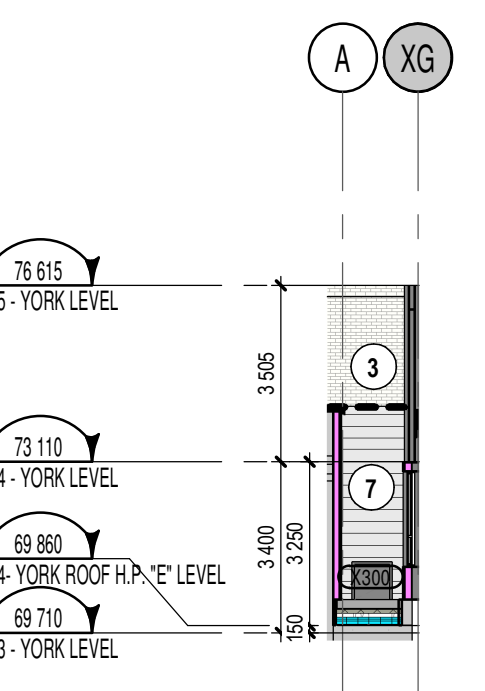
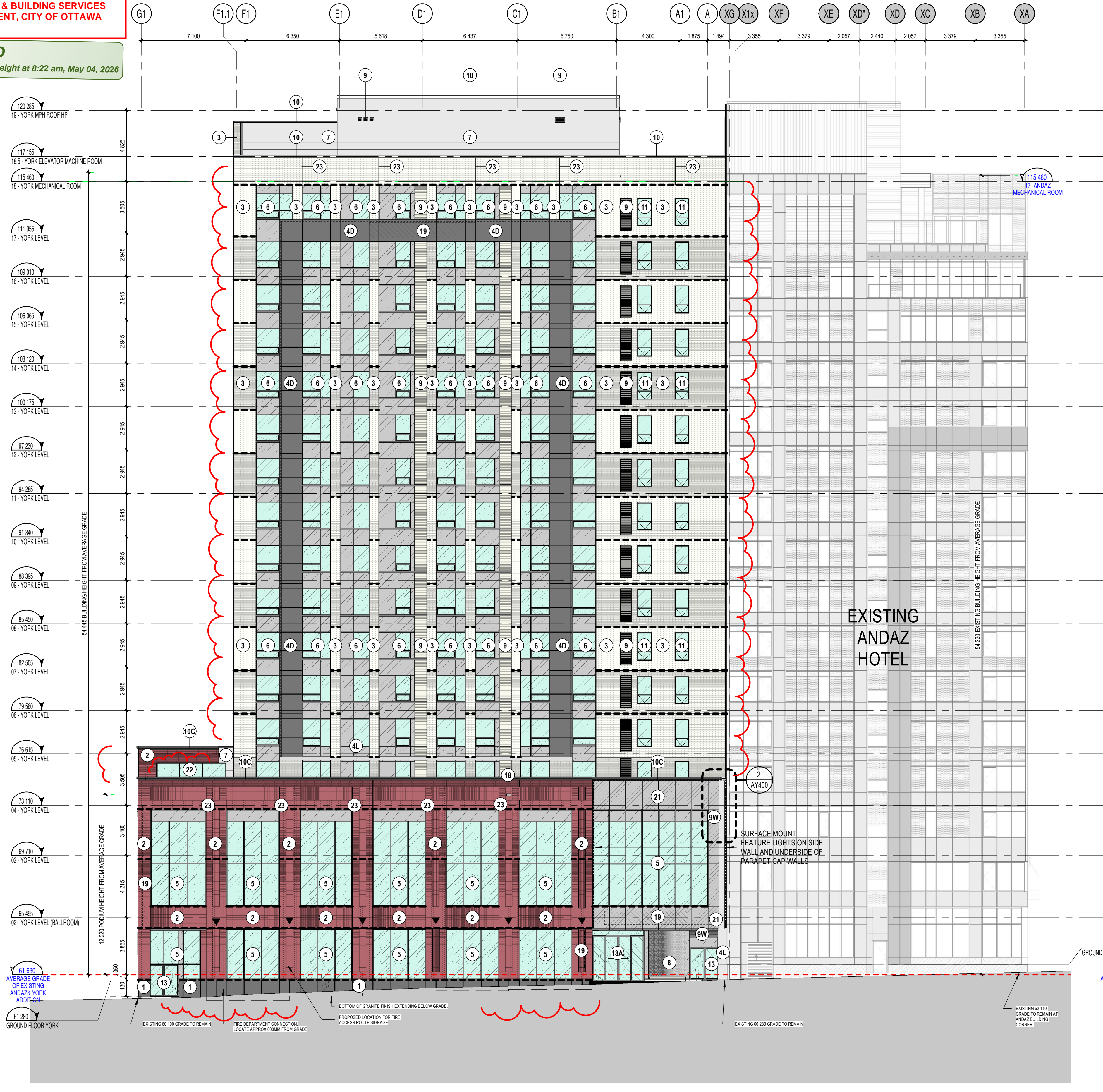
NO	REVISION	DATE (yyyy.mm.dd)
NNN	FOR SITE PLAN APPROVAL	2025.06.30
PPP	FOR HH SD REVIEW #7	2025.07.03
OOO	FOR SITE PLAN APPROVAL	2025.07.15
UUU	ISSUED FOR PERMIT	2025.08.12
VVV	FOR SITE PLAN APPROVAL	2025.09.15
YYY	FOR COORDINATION	2025.10.03
ZZZ	FOR COORDINATION	2025.11.05
BBBB	FOR COORDINATION	2025.11.10
CCCC	FOR SITE PLAN APPROVAL	2025.11.11
FFFF	FOR TENDER	2025.12.10
HHHH	ADDENDUM #1	2025.12.19
KKKK	ADDENDUM #2	2026.01.15
MMMM	ADDENDUM #3	2026.02.09
NNNN	FOR REVISED SUPERSTRUCTURE PERMIT	2026.02.10
TTTT	FOR REVISED SITE PLAN APPROVAL	2026.03.27
UUUU	ADDENDUM #4	2026.03.30
VVVV	FOR REVISED SITE PLAN APPROVAL	2026.04.06

Drawn by
 SJ/OM/AA
 DATE (aa.mm.jj)
 JUN 2023

Checked by
 LH
 Scale
 As indicated

Drawing Title
ELEVATION (NORTH)

Revision
VVVV AY400



GLASS LEGEND

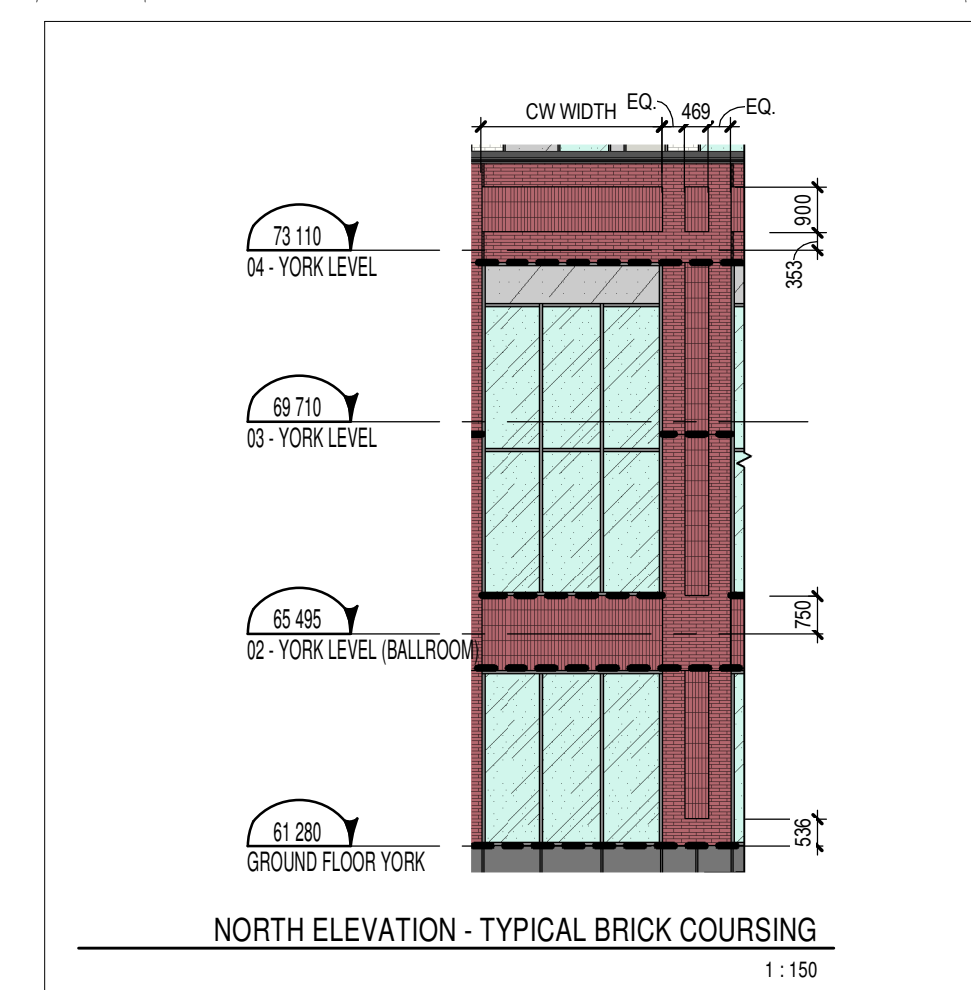
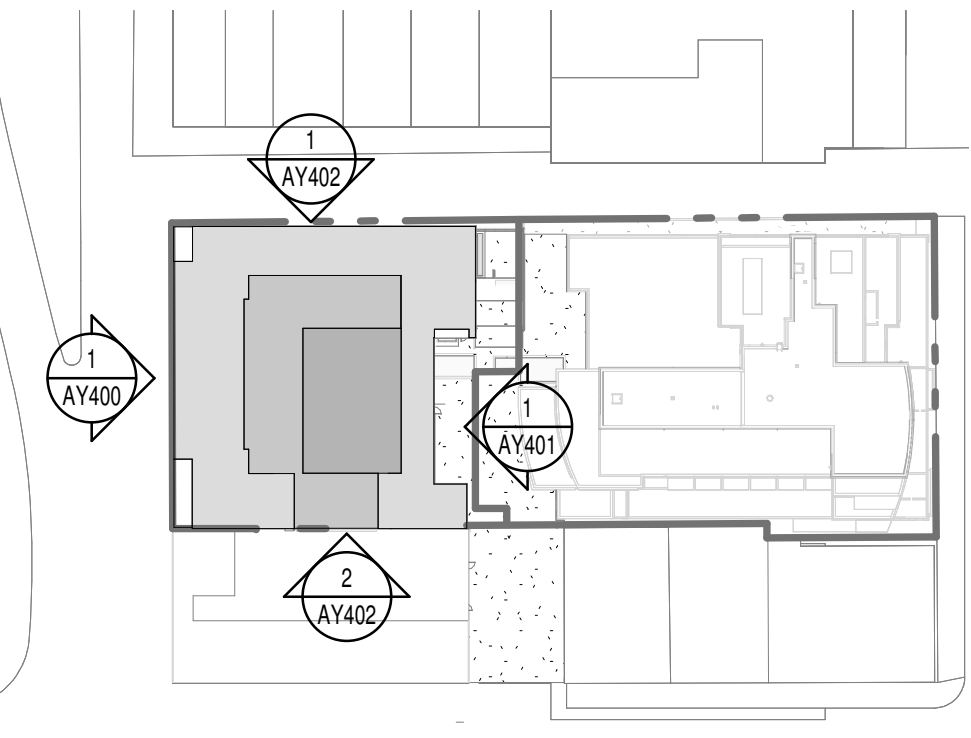
	VISION GLASS		FROSTED VISION GLASS
	VISION BIRD SAFE VISION GLASS		SPANDREL GLASS CLADDING WITH BIRD SAFE GLASS
	SPANDREL GLASS		
	BIRD SAFE SPANDREL GLASS		

FEATURE LIGHT LEGEND

	LINEAR LIGHTS
	WALL SCUNCES

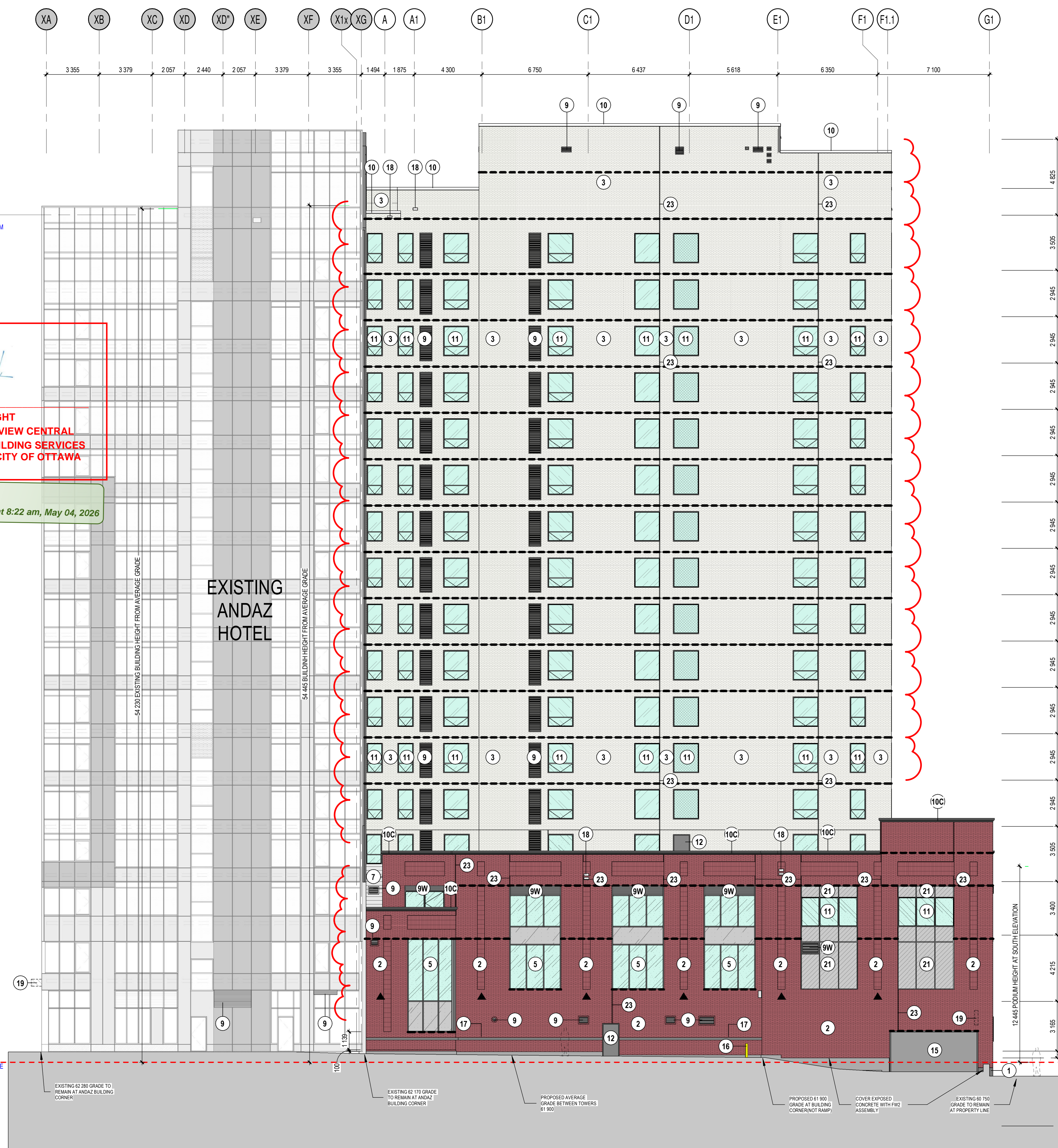
ELEVATION LEGEND

	EXTERIOR FINISH REFER TO ELEVATION KEYNOTE LEGEND
	WINDOW TYPE REFER TO WINDOW SCHEDULE
	PRE-PAINTED ALUMINUM WALL BOX VENTILATION GRILLE. COLOUR TO MATCH ADJACENT FINISH. COORDINATE WITH MECHANICAL ENGINEER DRAWINGS FOR LOCATIONS.
	GALVANIZED STEEL STRUCTURAL SHELF ANGLE. LEVELS AND LOCATIONS TO BE COORDINATED WITH THE ARCHITECTURAL DETAILS SECTIONS, MASONRY COURSINGS, STEEL SHOP DRAWINGS AND STRUCTURAL ENGINEER DRAWINGS.



NORTH ELEVATION (YORK)
 1:150

AY400



NOTE	DESCRIPTION
1	GRANITE PANEL WALL BASE, JET MIST COLOUR, FLAMED FINISH. REFER TO ELEVATIONS FOR SIZE.
2	MASONRY BRICK VENEER, RED COLOUR, CLOSELY MATCHING ORIGINAL BUILDING FINISHES. COLOUR WILLIAMSBURG MK2 BY CANADA BRICK UNIT METRIC NORMAN FORMAT 57X290X90mm. ALL GROUT AND SEALANTS TO BE CONFIRMED BY THE ARCHITECT.
2P	PRECAST CONCRETE PANELS, RED COLOUR, CLOSELY MATCHING BRICK VENEER. FORMAT 57X290X90mm. ALL GROUT AND SEALANTS TO BE CONFIRMED BY ARCHITECT.
3	MASONRY BRICK VENEER, SILVER CITY WIRECUT MODULAR UNITS FROM GLEN-GERY, 57Hx194Lx92D, ALL GROUT AND SEALANTS TO MATCH BRICK COLOUR.
4D	PRE-FINISHED ALUMINUM MODULAR PANELS, COLOUR TO MATCH MULLIONS ACRYNAR CHARCOAL GRAY (UCFX10080).
4L	LIGHT GREY PREFINISHED ALUMINUM MODULAR PANELS, CLEAR ANODIZED COLOUR TO MATCH EXISTING ANDAZ COLOUR.
5	CURTAIN WALL, SEALED GLASS UNIT / PREPAINTED ALUMINUM FRAME, ACRYNAR CHARCOAL GRAY (UCFX10080) COLOUR EXTERIOR AND CLEAR ANODIZED (200A/300A) INTERIOR SEE CURTAIN WALL ELEVATION PAGE.
6	WINDOW WALL, SEALED GLASS UNIT / PREPAINTED ALUMINUM FRAME, ACRYNAR CHARCOAL GRAY (UCFX10080) COLOUR EXTERIOR AND CLEAR ANODIZED (200A/300A) INTERIOR SEE WINDOW WALL ELEVATION PAGE.
7	PREPAINTED HORIZONTAL STEEL CLADDING, COLOUR TO MATCH ADJACENT WALL FINISH.
8	PERFORATED METAL SCREEN HANGING IN FRONT OF MECHANICAL LOUVER WITHIN WINDOW SYSTEM. COLOUR TO BE CONFIRMED BY ARCHITECT/INTERIOR DESIGNER.
9	PREPAINTED ALUMINUM VENTILATION GRILLE, COLOUR TO MATCH ADJACENT WALL FINISH. COORDINATION WITH MECHANICAL DRAWINGS FOR LOCATION.
9W	PREPAINTED ALUMINUM VENTILATION GRILLE, COLOUR TO MATCH ACRYNAR CHARCOAL GRAY (UCFX10080) WITHIN WINDOW SYSTEM. COORDINATION WITH MECHANICAL DRAWINGS FOR LOCATION.
10	PARAPET, COLOUR TO MATCH BRICK (ITEM 3 ON LEGEND).
10C	ARCHITECTURAL CORNICE OF BENT METAL FLASHING, COLOUR TO MATCH ACRYNAR CHARCOAL GRAY (UCFX10080).
11	PUNCHED WINDOW MULLIONS TO MATCH ITEM 6.
12	STEEL DOOR, COLOUR TO MATCH ADJACENT WALL FINISH.
13	GLAZED ENTRY DOOR, SEALED CLEAR GLASS UNIT / PREPAINTED ALUMINUM FRAME. SEE DOOR SCHEDULE PAGE. COLOUR TO MATCH CURTAIN WALL (ITEM 5 ON LEGEND).
13A	AUTOMATIC SLIDING GLAZED ENTRY DOOR, SEALED CLEAR GLASS UNIT / PREPAINTED ALUMINUM FRAME. SEE DOOR SCHEDULE PAGE. COLOUR TO MATCH CURTAIN WALL (ITEM 5 ON LEGEND).
14	FIRE DEPARTMENT CONNECTION, REFER TO CIVIL.
15	HEAVY DUTY RUBBER ROLL-UP DOOR, COLOUR AS PER MANUFACTURER STANDARD BLACK OR DARK GREY.
16	TYPICAL PAINTED STEEL BOLLARD, FILLED WITH CONCRETE.
17	WALL MOUNTED WALL PROTECTION, EXTRUDED RUBBER FENDER, REFER TO SPEC.
18	OVERFLOW SCUPPER, COLOUR TO MATCH ADJACENT EXTERIOR FINISH.
19	SIGNAGE, EXACT SIZE, COMPOSITION AND LOCATION TO BE DETERMINED BY THE RETAILER IN COORDINATION WITH CITY REQUIREMENTS.
21	SPANDREL GLASS CLADDING (OPAQUE) WITH PREPAINTED ALUMINUM FRAMING, COLOUR TO MATCH ITEMS.
22	GLAZED SOUND BARRIER, MINIMUM 6mm THICK GLASS WITH FROSTED BIRD SAFE FINISH TO EXTERIOR FACE. POSTS TO BE GALVANIZED STEEL.
23	VERTICAL MASONRY CONTROL JOINT, 25mm SEALANT ON BACKER ROD. USED AS TYPICAL CONTROL MOVEMENT JOINTS AND VERTICAL TRANSITIONS BETWEEN DIFFERING COLOURED BRICK VENEERS.

GLASS LEGEND

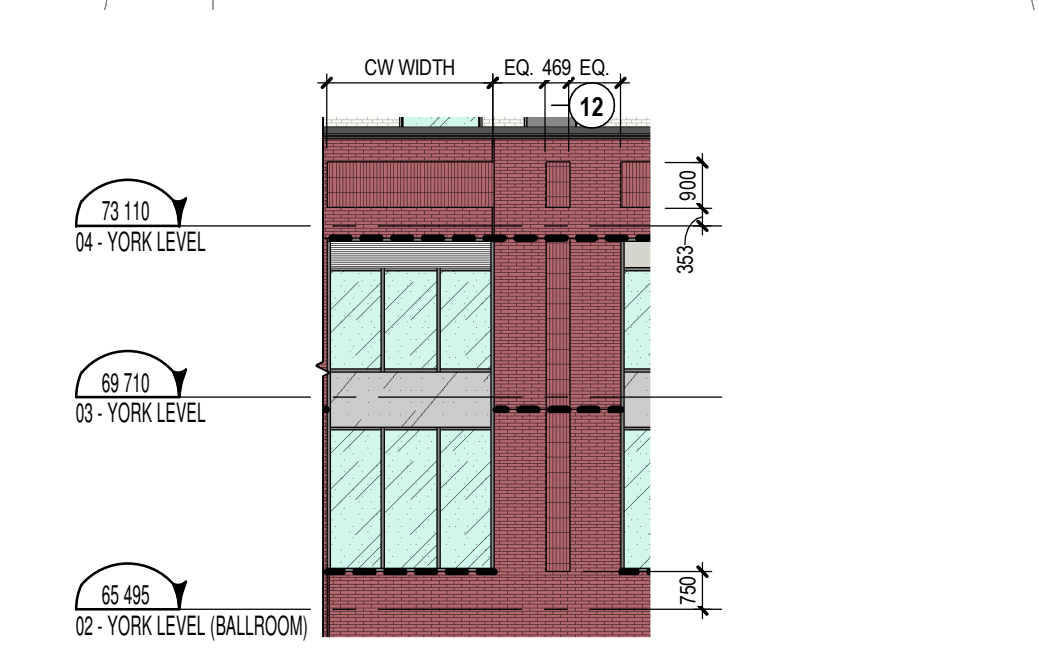
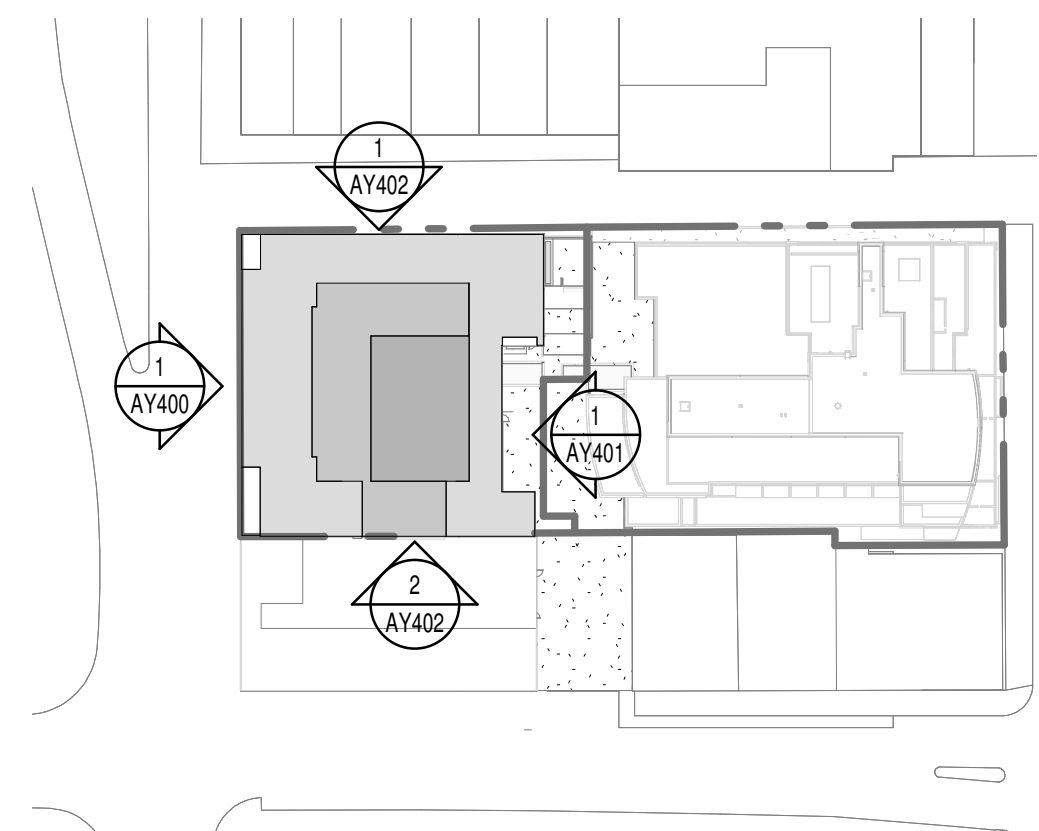
- VISION GLASS
- VISION BIRD SAFE VISION GLASS
- SPANDREL GLASS
- BIRD SAFE SPANDREL GLASS
- FROSTED VISION GLASS
- SPANDREL GLASS CLADDING WITH BIRD SAFE GLASS

FEATURE LIGHT LEGEND

- LINEAR LIGHTS
- WALL SCONCES

ELEVATION LEGEND

- EXTERIOR FINISH: REFER TO ELEVATION KEYNOTE LEGEND
- WINDOW TYPE: REFER TO WINDOW SCHEDULE
- PRE-PAINTED ALUMINUM WALL BOX VENTILATION GRILLE: COLOUR TO MATCH ADJACENT FINISH. COORDINATE WITH MECHANICAL ENGINEER DRAWINGS FOR LOCATIONS.
- GALVANIZED STEEL STRUCTURAL SHELF ANGLE: LEVELS AND LOCATIONS TO BE COORDINATED WITH THE ARCHITECTURAL DETAILS SECTIONS, MASONRY COURSING, STEEL SHOP DRAWINGS AND STRUCTURAL ENGINEER DRAWINGS.



SOUTH ELEVATION
1 : 150

1
AY401

GENERAL NOTES

- These architectural documents are the exclusive property of NEUF architect(e)s inc. and cannot be used, copied, or reproduced without written pre-authorization.
- The contractor is responsible for checking and verifying all dimensions with respect to the project. Any discrepancy shall be reported to the architect.
- The architect must be notified of all errors, omissions, and discrepancies between these documents and those of the other professionals.
- Do not scale drawings. The dimensions on these documents must be read and not measured.
- These drawings are to be read in conjunction with all material relevant to the project.

Mechanical - Electrical Engineer
JAIN
7405 East Danbro Crescent, 2nd Floor Mississauga, Ontario, L5N 6P8
T 905 285 9900 jainconsultants.com

Structural Engineer
ADJELIAN ALLEN RUBELI LIMITED
75 Allen Street, Suite 1005, Ottawa, Ontario K1P 5E7
T 613 232 5786 aar.ca

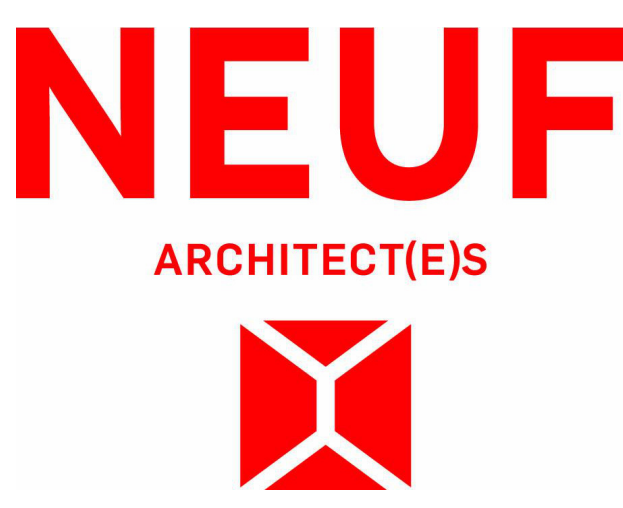
Landscape Architect
James B. Lennox & Associates
5555 Carling Avenue, Ottawa ON K2H 5A6
T 613 722 5168 jbla.ca

Civil
Novatech Eng. Consultants Ltd.
240, Michael Cowland Drive, Suite 200, Ottawa ON K2M 1P6
T 613 234 9653 novatech-eng.com

Architect
NEUF Architectes INC.
10 Rideau Street, 4th floor, Ottawa ON K1N 9J1
T 514 947 1117 neuf.ca

Interior Design
Mason Studio
51 Palmum Avenue, Toronto ON M5N 1A5
T 416 781 9736 masonstudio.com

SURVEYOR
ANNIS O'SULLIVAN VOLLEBEKK Ltd.
14 Concourse Gate, Suite 500, Nepean ON K2E 7S6
T 613 727 0650 aposlliv.com



Client
CLARIDGE HOMES
505 Preston St, 2nd Floor, Ottawa ON, K1S 4N7
T 613 219 8503 claridgehomes.com

Project
110-116 YORK STREET
Location
OTTAWA No. 13098.00

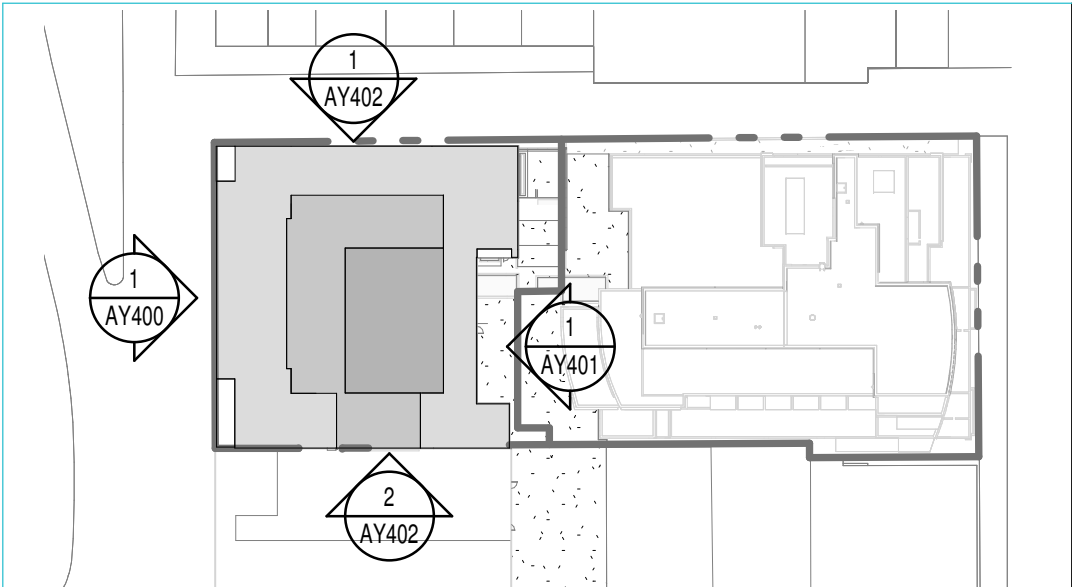
NO	REVISION	DATE (yyyy.mm.dd)
MMM	FOR COORDINATION	2025.06.18
NNN	FOR SITE PLAN APPROVAL	2025.06.30
PPP	FOR HH SD REVIEW #7	2025.07.03
QQQ	FOR SITE PLAN APPROVAL	2025.07.15
UUU	ISSUED FOR PERMIT	2025.06.12
VVV	FOR SITE PLAN APPROVAL	2025.09.15
YYY	FOR COORDINATION	2025.10.03
ZZZ	FOR COORDINATION	2025.11.05
BBBB	FOR COORDINATION	2025.11.10
CCCC	FOR SITE PLAN APPROVAL	2025.11.11
FFFF	FOR TENDER	2025.12.10
KKKK	ADDENDUM #2	2026.01.15
MMMM	ADDENDUM #3	2026.02.09
NNNN	FOR REVISED SUPERSTRUCTURE PERMIT	2026.02.10
TTTT	FOR REVISED SITE PLAN APPROVAL	2026.03.27
UUUU	ADDENDUM #4	2026.03.30
VVVV	FOR REVISED SITE PLAN APPROVAL	2026.04.06

Drawn by
SJ/OM
DATE (aa.mm.jj)
JUN 2023

Checked by
LH
Scale
As indicated

Drawing Title
ELEVATIONS (SOUTH)

Revision
VVVV Dwg Number
AY401



EXTERIOR FINISH
REFER TO ELEVATION KEYNOTE LEGEND

WINDOW TYPE REFER TO WINDOW SCHEDULE

PRE-PAINTED ALUMINUM WALL BOX VENTILATION GRILL. COLOUR TO MATCH ADJACENT FINISH. MASONRY COURSING, STEEL SHOP DRAWINGS AND STRUCTURAL ENGINEER DRAWINGS FOR LOCATIONS.

GALVANIZED STEEL STRUCTURAL SHELF ANGLE
LEVELS AND LOCATIONS TO BE COORDINATED WITH THE ARCHITECTURAL DETAILS / SECTIONS, MASONRY COURSING, STEEL SHOP DRAWINGS AND STRUCTURAL ENGINEER DRAWINGS.

GLASS LEGEND

- VISION GLASS
- VISION BIRD SAFE VISION GLASS
- SPANDREL GLASS
- BIRD SAFE SPANDREL GLASS
- FROSTED VISION GLASS
- SPANDREL GLASS CLADDING WITH BIRD SAFE GLASS

ELEVATION KEYNOTE LEGEND

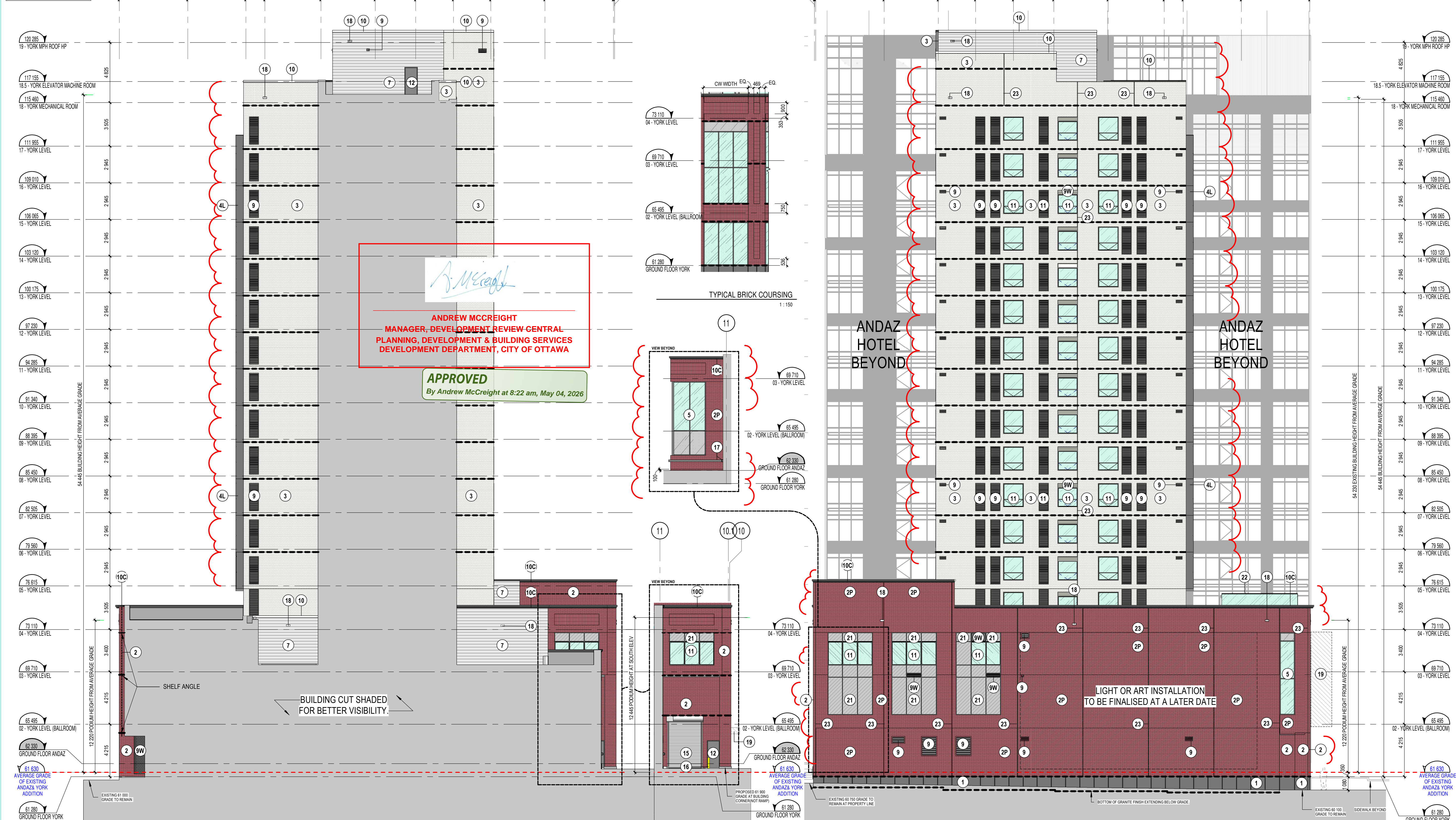
NOTE	DESCRIPTION
1	GRANITE PANEL WALL BASE, JET MIST COLOUR, FLAMED FINISH. REFER TO ELEVATIONS FOR SIZE.
2	MASONRY BRICK VENEER, RED COLOUR CLOSELY MATCHING ORIGINAL BUILDING FINISHES. COLOUR WILLIAMSBURG M2 BY CANADA BRICK UNIT METRIC NORMAN FORMAT 57x200x90mm. ALL GROUT AND SEALANTS TO BE CONFIRMED BY THE ARCHITECT.
2P	PRECAST CONCRETE PANELS, RED COLOUR CLOSELY MATCHING BRICK VENEER, FORMAT 57x200x90mm. ALL GROUT AND SEALANTS TO BE CONFIRMED BY ARCHITECT.
3	MASONRY BRICK VENEER, SILVER CITY WIRECUT MODULAR UNITS FROM GLEN-GERY, 57Hx194Lx92D, ALL GROUT AND SEALANTS TO MATCH BRICK COLOUR.
4	PREFINISHED ALUMINUM MODULAR PANELS. COLOUR TO MATCH MULLIONS ACRYNAR CHARCOAL GRAY (UCFX1008).
4L	LIGHT GREY PREFINISHED ALUMINUM MODULAR PANELS. CLEAR ANODIZED COLOUR TO MATCH EXISTING ANDAZ COLOUR.
5	CURTAIN WALL SEALED GLASS UNIT / PREPARED ALUMINUM FRAME, ACRYNAR CHARCOAL GRAY (UCFX1008) COLOUR EXTERIOR AND CLEAR ANODIZED (200A300A) INTERIOR SEE CURTAIN WALL ELEVATION PAGE.
6	WINDOW WALL SEALED GLASS UNIT / PREPARED ALUMINUM FRAME, ACRYNAR CHARCOAL GRAY (UCFX1008) COLOUR EXTERIOR AND CLEAR ANODIZED (200A300A) INTERIOR SEE WINDOW WALL ELEVATION PAGE.
7	PREPARED HORIZONTAL STEEL CLADDING, COLOUR TO MATCH ADJACENT WALL FINISH.
8	PERFORATED METAL SCREEN HANGING IN FRONT OF MECHANICAL LOUVER WITHIN WINDOW SYSTEM. COLOUR TO BE CONFIRMED BY ARCHITECT/INTERIOR DESIGNER.
9	PREPARED ALUMINUM VENTILATION GRILLE. COLOUR TO MATCH ADJACENT WALL FINISH. COORDINATION WITH MECHANICAL DRAWINGS FOR LOCATION.
9W	PREPARED ALUMINUM VENTILATION GRILLE. COLOUR TO MATCH ACRYNAR CHARCOAL GRAY (UCFX1008) WITHIN WINDOW SYSTEM. COORDINATION WITH MECHANICAL DRAWINGS FOR LOCATION.

ELEVATION KEYNOTE LEGEND

NOTE	DESCRIPTION
10	PARAPET, COLOUR TO MATCH BRICK (ITEM 3 ON LEGEND).
10C	ARCHITECTURAL CORNICE OF BENT METAL FLASHING, COLOUR TO MATCH ACRYNAR CHARCOAL GRAY (UCFX1008).
11	PUNCHED WINDOW MULLIONS TO MATCH ITEM 6.
12	STEEL DOOR, COLOUR TO MATCH ADJACENT WALL FINISH.
13	GLAZED ENTRY DOOR, SEALED CLEAR GLASS UNIT / PREPARED ALUMINUM FRAME. SEE DOOR SCHEDULE PAGE. COLOUR TO MATCH CURTAIN WALL (ITEM 5 ON LEGEND).
13A	AUTOMATIC SLIDING GLAZED ENTRY DOOR, SEALED CLEAR GLASS UNIT / PREPARED ALUMINUM FRAME. SEE DOOR SCHEDULE PAGE. COLOUR TO MATCH CURTAIN WALL (ITEM 5 ON LEGEND).
14	FIRE DEPARTMENT CONNECTION, REFER TO CIVIL.
15	HEAVY DUTY RUBBER ROLL-UP DOOR, COLOUR AS PER MANUFACTURER STANDARD BLACK OR DARK GREY.
16	TYPICAL PAINTED STEEL BOLLARD, FILLED WITH CONCRETE.
17	WALL MOUNTED WALL PROTECTION, EXTRUDED RUBBER FENDER, REFER TO SPEC.
18	OVERFLOW SCUPPER, COLOUR TO MATCH ADJACENT EXTERIOR FINISH.
19	SIGNAGE, EXACT SIZE, COMPOSITION AND LOCATION TO BE DETERMINED BY THE RETAILER IN COORDINATION WITH CITY REQUIREMENTS.
21	SPANDREL GLASS CLADDING (OPAQUE) WITH PREPARED ALUMINUM FRAMING. COLOUR TO MATCH ITEM 5.
22	GLAZED SOUND BARRIER, MINIMUM 8mm THICK GLASS WITH FROSTED BIRD SAFE FINISH TO EXTERIOR FACE. POSTS TO BE GALVANIZED STEEL.
23	VERTICAL MASONRY CONTROL JOINT, 25mm SEALANT ON BACKER ROD, USED AS TYPICAL CONTROL MOVEMENT JOINTS AND VERTICAL TRANSITIONS BETWEEN DIFFERING COLOURED BRICK VENEERS.

FEATURE LIGHT LEGEND

- LINEAR LIGHTS
- WALL SCONCES



GENERAL NOTES

- These architectural documents are the exclusive property of NEUF architect(e)s inc. and cannot be used, copied, or reproduced without written pre-authorization.
- The contractor is responsible for checking and verifying all dimensions with respect to the project. Any discrepancy shall be reported to the architect.
- The architect must be notified of all errors, omissions, and discrepancies between these documents and those of the other professionals.
- Do not scale drawings. The dimensions on these documents must be read and not measured.
- These drawings are to be read in conjunction with all material relevant to the project.

Mechanical - Electrical Engineer
JAIN
7405 East Danbro Crescent, 2nd Floor Mississauga, Ontario, L5N 6P8
T 905 285 9900 | jainco.ca

Structural Engineer
ADJELEIAN ALLEN RUBELI LIMITED
75 Allen Street, Suite 1005, Ottawa, Ontario K1P 5E7
T 613 232 5786 | aar.ca

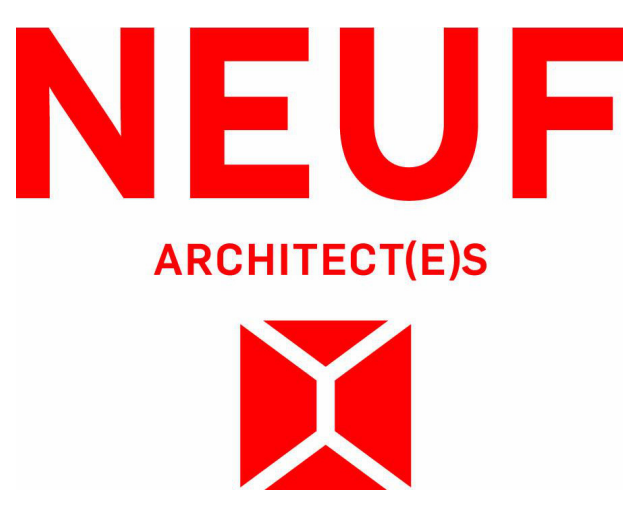
Landscape Architect
James B. Lennox & Associates
5555, Conroy Avenue, Ottawa ON K2M 5A8
T 613 234 9653 | jlennox.com

Civil
Novatech Eng. Consultants Ltd.
240, Michal Cowland Drive, Suite 200, Ottawa ON K2M 1P6
T 613 234 9653 | novatech.com

Architect
NEUF Architectes INC.
10 Rideau Street, 4th floor, Ottawa ON K1N 9J1
T 514 947 1117 | neuf.ca

Interior Design
Mason Studio
91 Palham Avenue, Toronto ON M6N 1A5
T 416 781 9798 | masonstudio.com

SURVEYOR
ANNIS O'SULLIVAN VOLLEBEKK Ltd.
14 Concourse Gate, Suite 500, Nepean ON K2E 756
T 613 277 0650 | annis.com



Client
CLARIDGE HOMES
505 Preston St, 2nd Floor, Ottawa ON, K1S 4N7
T 613 219 8503 | claridgehomes.com

Project
110-116 YORK STREET

Location
OTTAWA

No.
13098.00

NO	REVISION	DATE (yyyy-mm-dd)
MMM	FOR COORDINATION	2025.06.18
NNN	FOR SITE PLAN APPROVAL	2025.06.30
PPP	FOR HH 5D REVIEW #7	2025.07.03
QQQ	FOR SITE PLAN APPROVAL	2025.07.15
UUU	ISSUED FOR PERMIT	2025.08.12
VVV	FOR SITE PLAN APPROVAL	2025.09.15
YYY	FOR COORDINATION	2025.10.03
ZZZ	FOR COORDINATION	2025.11.05
BBB	FOR COORDINATION	2025.11.10
CCC	FOR SITE PLAN APPROVAL	2025.11.11
FFF	FOR TENDER	2025.12.10
KKK	ADDENDUM #2	2026.01.15
MMM	ADDENDUM #3	2026.02.09
NNN	FOR REVISED SUPERSTRUCTURE PERMIT	2026.02.10
TTT	FOR REVISED SITE PLAN APPROVAL	2026.03.27
UUU	ADDENDUM #4	2026.03.30
VVV	FOR REVISED SITE PLAN APPROVAL	2026.04.06

Drawn by
SJ/OM

Checked by
LH

DATE (aa.mm.jj)
APRIL 2024

Scale
As indicated

Drawing Title
ELEVATIONS (EAST AND WEST)

Revision
VVVV

Dwg Number
AY402

C:\Fichiers Revit\Local\AY402_13098_ARC_R22_aaliyaR7RUH.rvt

DOT-12-25-0038