

PHASE 2.1 PARKING COUNT

PARKING COUNTS

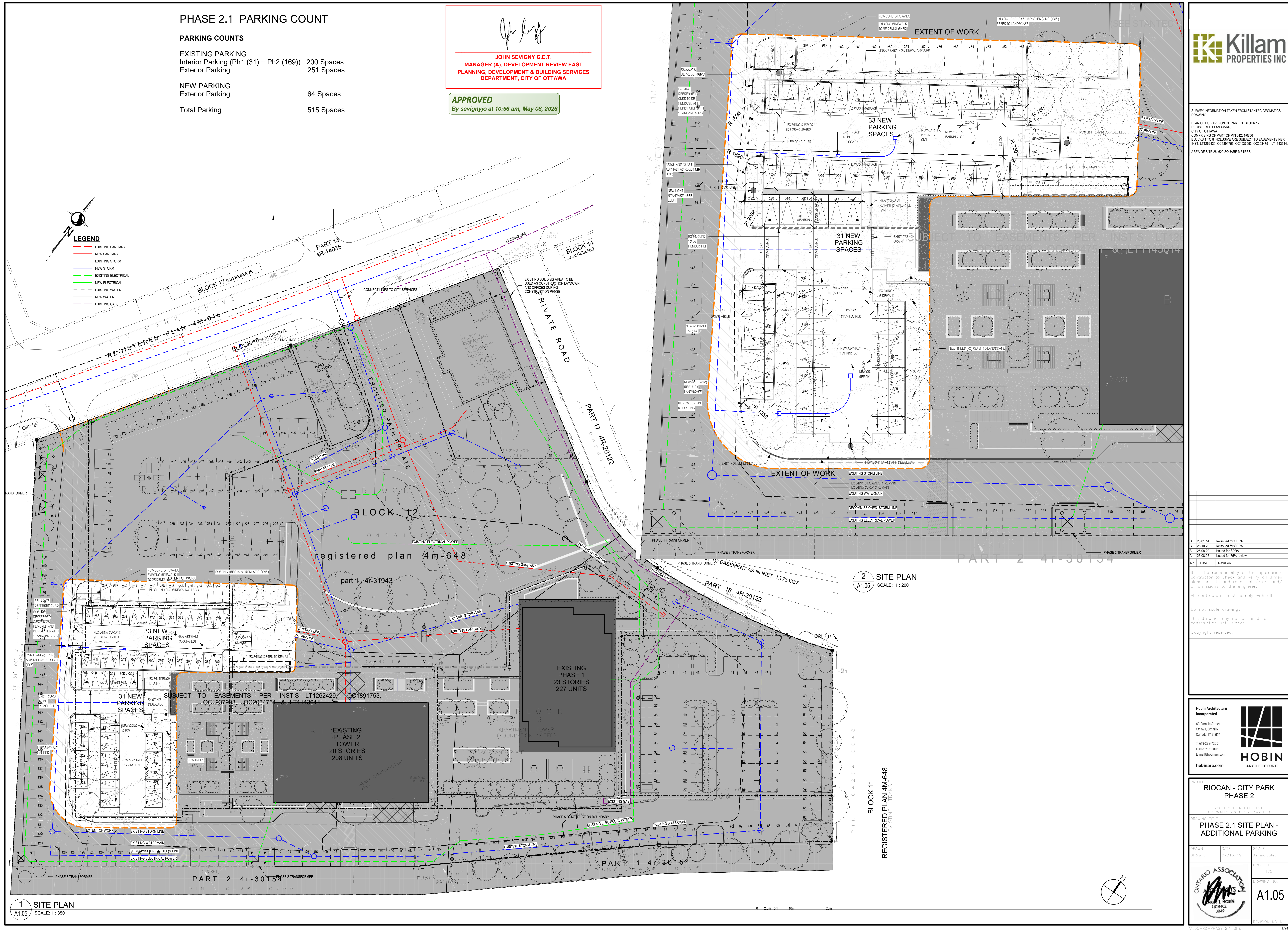
EXISTING PARKING		
Interior Parking (Ph1) + Ph2 (169)	200 Spaces	
Exterior Parking	251 Spaces	
NEW PARKING		
Exterior Parking	64 Spaces	
Total Parking	515 Spaces	

APPROVED
By sevignyjo at 10:56 am, May 08, 2026

JOHN SEVIGNY C.E.T.
MANAGER (A), DEVELOPMENT REVIEW EAST
PLANNING, DEVELOPMENT & BUILDING SERVICES
DEPARTMENT, CITY OF OTTAWA



SURVEY INFORMATION TAKEN FROM STANTEC GEOMATICS DRAWING:
PLAN OF SUBDIVISION OF PART OF BLOCK 12
REGISTERED PLAN 4M-648
CITY OF OTTAWA
COMPRISING OF PART OF PIN 04264-0756
BLOCKS 1 TO 8 INCLUSIVE ARE SUBJECT TO EASEMENTS PER
INST. LT1262429, OC1891753, OC1891753, OC2034751, LT143614,
AREA OF SITE 26, 622 SQUARE METERS



LEGEND

EXISTING SANITARY	(Red dashed line)
NEW SANITARY	(Red solid line)
EXISTING STORM	(Blue dashed line)
NEW STORM	(Blue solid line)
EXISTING ELECTRICAL	(Green dashed line)
NEW ELECTRICAL	(Green solid line)
EXISTING WATER	(Purple dashed line)
NEW WATER	(Purple solid line)
EXISTING GAS	(Pink dashed line)

2 SITE PLAN
SCALE: 1:200

1 SITE PLAN
SCALE: 1:350

D	26.01.14	Revised for SPRA
C	25.10.20	Revised for SPRA
B	25.08.20	Issued for SPRA
A	25.08.05	Issued for 75% review

No. Date Revision

It is the responsibility of the appropriate contractor to check and verify all dimensions on site and report all errors and/or omissions to the engineer.
All contractors must comply with all applicable codes and standards.
This drawing may not be used for construction until signed.
Copyright reserved.

Hobin Architecture Incorporated
63 Pimble Street
Ottawa, Ontario
Canada K1S 3K7
T: 613-238-7200
F: 613-235-9865
E: mail@hobinarc.com
hobinarc.com

PROJECT
RIOCAN - CITY PARK
PHASE 2
200 FRONTIER PATH PVT.
(FORMERLY 2280 City Park Dr.)

DRAWING TITLE
PHASE 2.1 SITE PLAN -
ADDITIONAL PARKING

DRAWN	DATE	SCALE
SH/WWK	07/16/19	As indicated

PROJECT NO. 1759
DRAWING NO. A1.05
REVISION NO. D