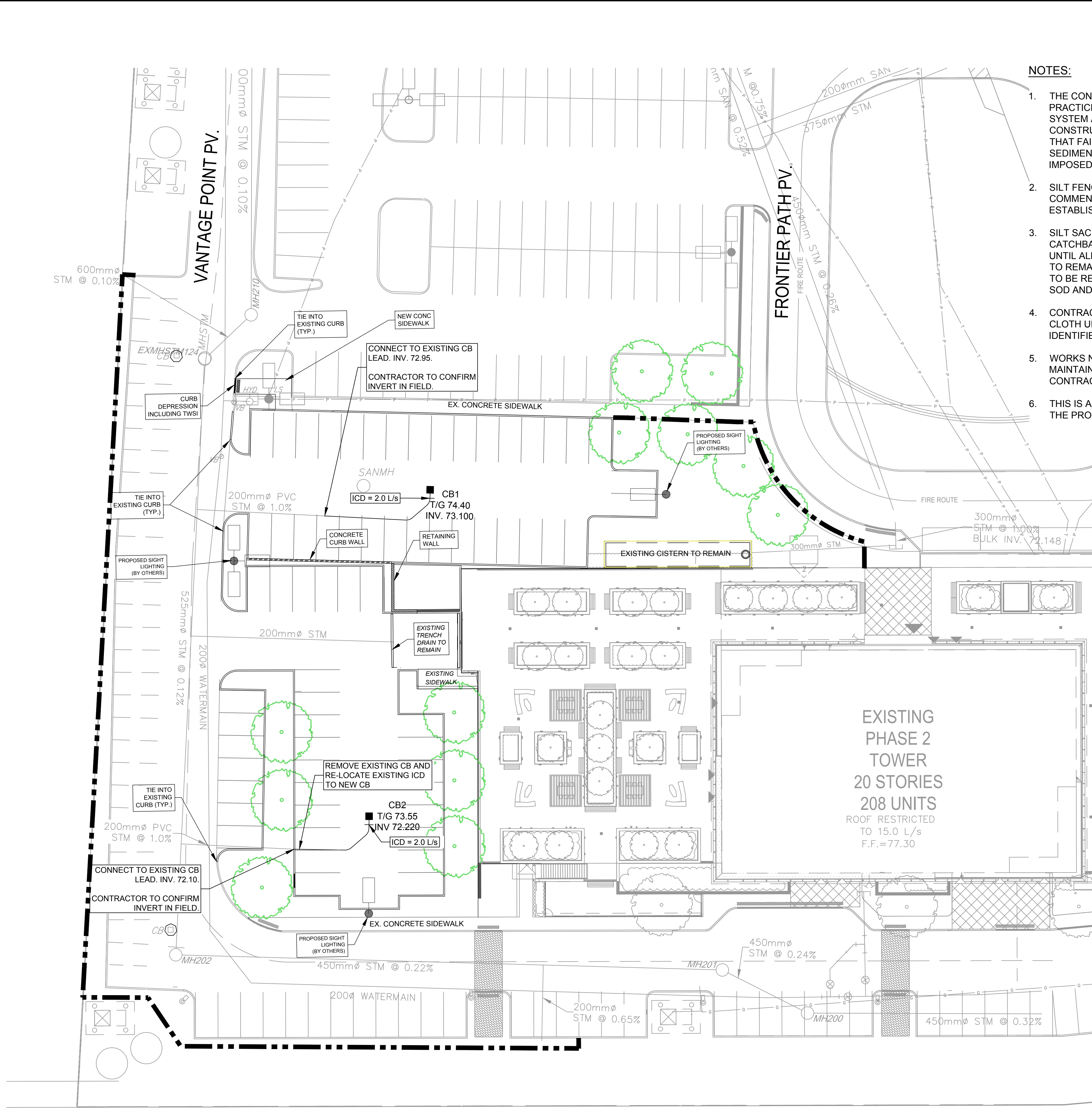


NOTE:
A All dimensions are in millimetres unless otherwise shown.

ONTARIO PROVINCIAL STANDARD DRAWING
Nov 2021 Rev 3
LIGHT-DUTY SILT FENCE BARRIER
OPSD 219.110

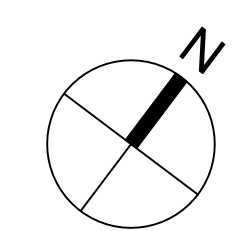


- NOTES:**
1. THE CONTRACTOR SHALL IMPLEMENT BEST MANAGEMENT PRACTICES, TO PROVIDE FOR PROTECTION OF THE AREA DRAINAGE SYSTEM AND THE RECEIVING WATERCOURSE, DURING CONSTRUCTION ACTIVITIES. THE CONTRACTOR ACKNOWLEDGES THAT FAILURE TO IMPLEMENT APPROPRIATE EROSION AND SEDIMENT CONTROL MEASURES MAY BE SUBJECT TO PENALTIES IMPOSED BY ANY APPLICABLE REGULATORY AGENCY.
 2. SILT FENCE TO BE ERECTED PRIOR TO EARTH WORKS BEING COMMENCED. SILT FENCE TO BE MAINTAINED UNTIL VEGETATION IS ESTABLISHED OR UNTIL START OF SUBSEQUENT PHASE.
 3. SILT SACK TO BE PLACED AND MAINTAINED UNDER COVER OF ALL CATCHBASINS. GEOTEXTILE SILT SACK IN STREET CBS TO REMAIN UNTIL ALL CURBS ARE CONSTRUCTED. GEOTEXTILE FABRIC IN RYCBs TO REMAIN UNTIL VEGETATION IS ESTABLISHED. ALL CATCHBASINS TO BE REGULARLY INSPECTED AND CLEANED, AS NECESSARY, UNTIL SOD AND CURBS ARE CONSTRUCTED.
 4. CONTRACTOR TO PROTECT EXISTING CATCHBASINS WITH FILTER CLOTH UNDER THE COVERS TO TRAP SEDIMENTATION. REFER TO IDENTIFIED STRUCTURES.
 5. WORKS NOTED ABOVE ARE TO BE INSTALLED, INSPECTED, MAINTAINED AND ULTIMATELY REMOVED BY SERVICING CONTRACTOR.
 6. THIS IS A "LIVING DOCUMENT" AND MAY BE MODIFIED IN THE EVENT THE PROPOSED CONTROL MEASURES ARE INSUFFICIENT.

LEGEND:

--- LIGHT DUTY SILT FENCE AS PER OPSD-219.110

○ SILT SACK PLACED UNDER EXISTING CB COVER

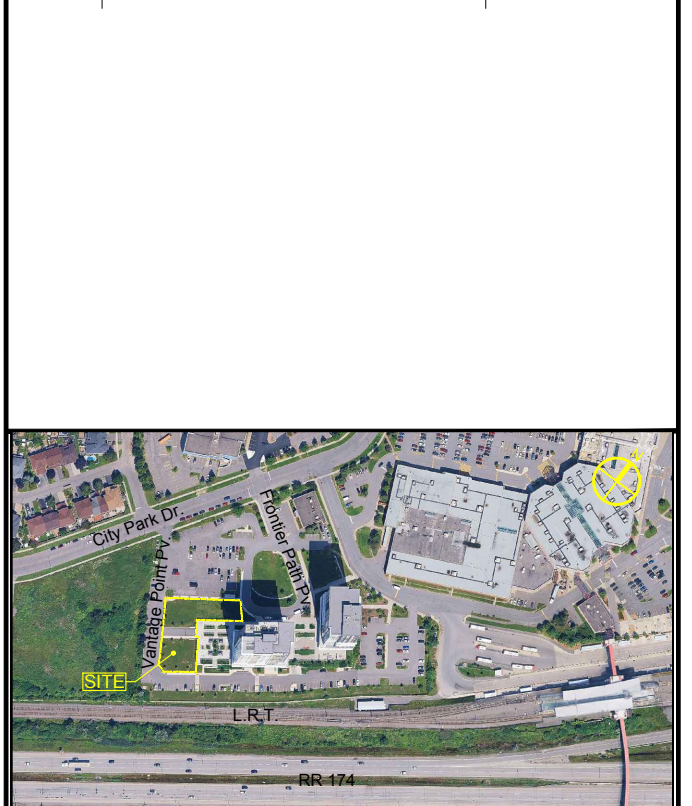


CLIENT
Killam PROPERTIES INC

COPYRIGHT
This drawing has been prepared solely for the intended use, thus any reproduction or distribution for any purpose other than authorized by Arcadis is forbidden. Written dimensions shall have precedence over scaled dimensions. Contractors shall verify and be responsible for all dimensions and conditions on the job, and Arcadis shall be informed of any variations from the dimensions and conditions shown on the drawing. Shop drawings shall be submitted to Arcadis for general conformance before proceeding with fabrication.

Arcadis Professional Services (Canada) Inc.
formerly (B) Group Professional Services (Canada) Inc.

ISSUES		
No.	DESCRIPTION	DATE
1	ISSUED FOR SPRA	2025-10-09
2	RE-ISSUED FOR SPRA	2026-01-19



CONSULTANTS

1:250 0 5 10 12.5m

SEAL

T. R. BRULE
PROFESSIONAL ENGINEER
2026/01/19
PROVINCE OF ONTARIO

PRIME CONSULTANT
ARCADIS
333 Preston Street - Suite 500
Ottawa ON K1S 5N4 Canada
tel 613 225 1311
www.arcadis.com

PROJECT
KILLAM - CITY PARK PHASE 2 INTERIM PARKING
200 FRONTIER PATH PVT.

PROJECT NO: 38729
DRAWN BY: D.D. / E.H.
PROJECT MGR: T.R.B.

CHECKED BY: M.P.
APPROVED BY: T.R.B.

SHEET TITLE
EROSION-SEDIMENT PLAN

SHEET NUMBER
C-903

ISSUE
1

John Sevigny
JOHN SEVIGNY C.E.T.
MANAGER (A), DEVELOPMENT REVIEW EAST
PLANNING, DEVELOPMENT & BUILDING SERVICES
DEPARTMENT, CITY OF OTTAWA

APPROVED
By sevignyjo at 10:57 am, May 08, 2026

Plan #: 17741 File #: 12-25-0120