

1 TREE CONSERVATION PLAN
TCP 1:500

NOTE: THIS PLAN IS TO BE READ IN CONJUNCTION WITH THE LATEST Tree Conservation Report AS PREPARED BY Arcadis.

PLAN VIEW

CRZ = DBH x 10CM
 CRZ IS TO BE MEASURED FROM THE OUTSIDE EDGE OF THE TREE BASE

1.2M MIN. HIGH TREE PROTECTION FENCING AS PER REQUIREMENT # 3

POSTS TO BE SPACED AT 1.4M O/C MAX AS PER REQUIREMENT # 3

ACCESSIBLE FORMS AND COMMUNICATION SUPPORTS ARE AVAILABLE, UPON REQUEST

TREE PROTECTION REQUIREMENTS

- PRIOR TO ANY WORK ACTIVITY WITHIN THE CRITICAL ROOT ZONE (CRZ - 10 X DIAMETER) OF A TREE, TREE PROTECTION FENCING MUST BE INSTALLED SURROUNDING THE CRITICAL ROOT ZONE, AND REMAIN IN PLACE UNTIL THE WORK IS COMPLETE.
 - DO NOT PLACE ANY MATERIAL OR EQUIPMENT - INCLUDING OUTHOUSES;
 - DO NOT ATTACH ANY SIGNS, NOTICES OR POSTERS TO ANY TREE;
 - DO NOT RAISE OR LOWER THE EXISTING GRADE;
 - TUNNEL OR BORE WHEN DIGGING;
 - DO NOT DAMAGE THE ROOT SYSTEM, TRUNK, OR BRANCHES OF ANY TREE;
 - ENSURE THAT EXHAUST FUMES FROM ALL EQUIPMENT ARE NOT DIRECTED TOWARD ANY TREE CANOPY;
 - DO NOT EXTEND HARD SURFACE OR SIGNIFICANTLY CHANGE LANDSCAPING.
- TREE PROTECTION FENCING MUST BE AT LEAST 1.2M IN HEIGHT, AND CONSTRUCTED OF RIGID OR FRAMED MATERIALS (E.G. MODULOC, STEEL, PLYWOOD HOARDING, OR SNOW FENCE ON A 2X4" WOOD FRAME) WITH POSTS 2.4M APART, SUCH THAT THE FENCE LOCATION CANNOT BE ALTERED. ALL SUPPORTS AND BRACING MUST BE PLACED OUTSIDE OF THE CRZ, AND INSTALLATION MUST MINIMIZE DAMAGE TO EXISTING ROOTS. (SEE DETAIL)
- THE LOCATION OF THE TREE PROTECTION FENCING MUST BE DETERMINED BY AN ARBORIST AND DETAILED ON ANY ASSOCIATED PLANS FOR THE SITE (E.G. TREE CONSERVATION REPORT, TREE INFORMATION REPORT, ETC.). THE PLAN AND CONSTRUCTED FENCING MUST BE APPROVED BY CITY FORESTRY STAFF PRIOR TO THE COMMENCEMENT OF WORK.
- IF THE FENCED TREE PROTECTION AREA MUST BE REDUCED TO FACILITATE CONSTRUCTION, MITIGATION MEASURES MUST BE PRESCRIBED BY AN ARBORIST AND APPROVED BY CITY FORESTRY STAFF. THESE MAY INCLUDE THE PLACEMENT OF PLYWOOD, WOOD CHIP, OR STEEL PLATING OVER THE ROOTS FOR PROTECTION OR THE PROPER PRUNING AND CARE OF ROOTS WHERE ENCOUNTERED.

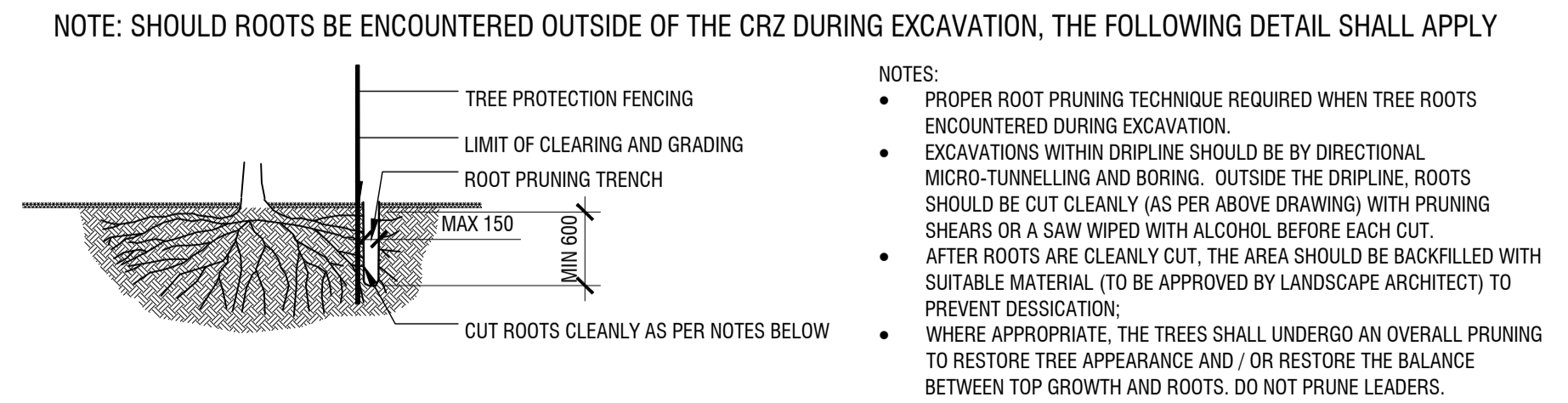
THE CITY'S TREE PROTECTION BY-LAW, 2030-340 PROTECTS BOTH CITY-OWNED TREES, CITY-WIDE, AND PRIVATELY-OWNED TREES WITHIN THE URBAN AREA. PLEASE REFER TO WWW.OTTAWA.CA/TREELAW FOR MORE INFORMATION ON HOW THE TREE BY-LAW APPLIES.

TREE PROTECTION SPECIFICATION

TO BE IMPLEMENTED FOR RETAINED TREES, BOTH ON SITE AND ON ADJACENT SITES, PRIOR TO ANY TREE REMOVAL OR SITE WORKS AND MAINTAINED FOR THE DURATION OF WORK ACTIVITIES ON SITE.

SCALE: NTS
 DATE: MARCH 2021
 DRAWING NO.: 1 of 1

2 TREE PROTECTION FENCING
TCP NTS



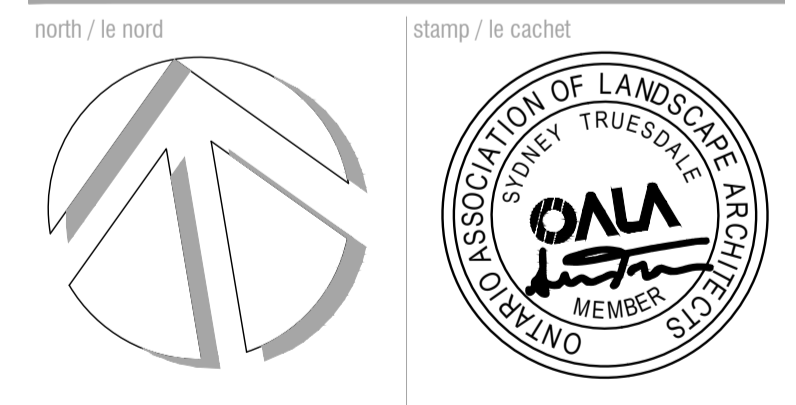
3 ROOT PRUNING DETAIL
TCP NTS

NO.	Common Name	Scientific Name	DBH (cm) (approx)	CRZ (m)	Condition	No. Stems	Comments	Impact / Recommendation
1	Siberian Elm	Ulmus pumila	15	1.5	Good	1	40cm away from manhole	Retain
2	Little-leaf Linden	Tilia cordata	32	3.2	Fair	1		To be Removed
3	Honey-locust	Gleditsia triacanthos	13	1.3	Good	1		To be Removed
320F1	Unknown	Unknown	0	0.0	Dead	1	Tree cut down	
320F8	Norway Spruce	Picea canadensis	30	3.0	Very Good	1		Retain
320F9	Norway Spruce	Picea canadensis	30	3.0	Very Good	1		Retain
32106	Norway Spruce	Picea canadensis	19	1.9	Excellent	1		Retain
32100	Norway Spruce	Picea canadensis	18	1.8	Very Good	1		Retain
32114	Norway Spruce	Picea canadensis	10	1.0	Very Good	1		Retain
*3211B	Norway Spruce	Picea canadensis	41	4.1	Good	1	Possible soil to be added in CRZ	
32122	Norway Spruce	Picea canadensis	30	3.0	Good	1		Retain
32129	Norway Spruce	Picea canadensis	16	1.6	Very Good	1	Leaking sap	Retain
32130	Norway Spruce	Picea canadensis	20	2.0	Very Good	1		Retain
32137	White Pine	Pinus strobus	25	2.5	Very Good	1		Retain
3213E	Norway Spruce	Picea canadensis	12	1.2	Good	1		Retain
32145	Norway Spruce	Picea canadensis	10	1.0	Good	1		Retain
3214C	Norway Spruce	Picea canadensis	17	1.7	Fair	1		Retain
32153	Norway Spruce	Picea canadensis	12	1.2	Very Good	1		Retain
3215A	Norway Spruce	Picea canadensis	10	1.0	Very Good	1		Retain
32161	Norway Spruce	Picea canadensis	10	1.0	Very Good	3		Retain
32168	Norway Spruce	Picea canadensis	11	1.1	Very Good	1		Retain
3216F	Norway Spruce	Picea canadensis	10	1.0	Very Good	1		Retain
32176	Norway Spruce	Picea canadensis	16	1.6	Good	1	Liab shrub at base	Retain
3217D	Norway Spruce	Picea canadensis	11	1.1	Very Good	1		Retain
32184	Eastern White Pine	Pinus strobus	38	3.8	Good	1		Retain
3218B	Eastern White Pine	Pinus strobus	42	4.2	Good	4		Retain
32192	Norway Spruce	Picea canadensis	20	2.0	Very Good	1		Retain
321A7	Eastern White Pine	Pinus strobus	40	4.0	Very Good	1		Retain
321AE	Norway Spruce	Picea canadensis	14	1.4	Very Good	1		Retain
321B5	Norway Spruce	Picea canadensis	21	2.1	Very Good	1		Retain
321D2	Norway Spruce	Picea canadensis	30	3.0	Very Good	1		To be Removed
321D9	American Basswood	Tilia americana	29	2.9	Very Good	2		To be Removed
321E0	Norway Spruce	Picea canadensis	14	1.4	Good	1		To be Removed
321E1	Norway Spruce	Picea canadensis	29	2.9	Very Good	1		Retain
3232B	Norway Spruce	Picea canadensis	39	3.9	Very Good	1		Retain
32332	Norway Spruce	Picea canadensis	28	2.8	Fair	1		Retain
32339	Common Buckthorn	Rhamnus coarctata	10	1.0	Very Good	4		Retain
32340	Norway Spruce	Picea canadensis	25	2.5	Very Good	1		Retain
32350	Norway Spruce	Picea canadensis	16	1.6	Good	1		Retain
3235D	Norway Spruce	Picea canadensis	15	1.5	Fair	1		Retain
32373	Apple Spp.	Malus spp.	21	2.1	Good	1		Retain
3237A	Apple Spp.	Malus spp.	11	1.1	Fair	1		Retain
3237B	Apple Spp.	Malus spp.	23	2.3	Good	1		Retain
3239F	Apple Spp.	Malus spp.	20	2.0	Fair	2		Retain
323A0	Norway Spruce	Picea canadensis	31	3.1	Very Good	1		Retain
323A4	Norway Spruce	Picea canadensis	19	1.9	Very Good	1		Retain
323B4	Norway Spruce	Picea canadensis	19	1.9	Good	1		Retain
32443	Apple Spp.	Malus spp.	26	2.6	Good	1		Retain
3244A	Apple Spp.	Malus spp.	22	2.2	Good	2		Retain
32483	Apple Spp.	Malus spp.	21	2.1	Very Good	2		Retain
32496	Apple Spp.	Malus spp.	19	1.9	Fair	2		Retain
324B3	Apple Spp.	Malus spp.	15	1.5	Good	1		Retain
324C4	Siberian Elm	Ulmus pumila	50	5.0	Very Good	1		Retain
324D4	Siberian Elm	Ulmus pumila	48	4.8	Very Good	1		Retain
324E4	Red Spruce	Picea rubens	38	3.8	Very Good	1		Retain
324F8	Red Pine	Pinus resinosa	23	2.3	Very Good	1		Retain
32502	Red Pine	Pinus resinosa	30	3.0	Very Good	1		Retain
32513	Apple Spp.	Malus spp.	15	1.5	Good	3		Retain
3251A	Apple Spp.	Malus spp.	15	1.5	Poor	3		Retain
32521	Red Pine	Pinus resinosa	27	2.7	Very Good	1		Retain
32532	Red Pine	Pinus resinosa	27	2.7	Good	1		Retain
32558	Siberian Elm	Ulmus pumila	49	4.9	Very Good	1		Retain
32562	Apple Spp.	Malus spp.	14	1.4	Good	1		Retain
32569	Apple Spp.	Malus spp.	11	1.1	Good	1		Retain
3257C	Siberian Elm	Ulmus pumila	52	5.2	Fair	1		Retain
325DA	Apple Spp.	Malus spp.	21	2.1	Very Good	2		Retain
326D4	Siberian Elm	Ulmus pumila	59	5.9	Very Good	1		Retain
326B0	Norway Spruce	Picea canadensis	33	3.3	Good	1		Retain
326E2	White Spruce	Picea canadensis	22	2.2	Excellent	1		Retain
326E9	Apple Spp.	Malus spp.	18	1.8	Very Good	1		Retain
326F5	American Basswood	Tilia americana	10	1.0	Excellent	1		Retain

NO.	Common Name	Scientific Name	DBH (cm)	CRZ (m)	Condition	No. Stems	Comments	Impact / Recommendation
32710	White Spruce	Picea glauca	24	2.4	Very Good	1		Retain
32717	White Spruce	Picea glauca	8	0.8	Very Good	1		Retain
3271E	Norway Spruce	Picea canadensis	14	1.4	Good	1		Retain
32725	Siberian Elm	Ulmus pumila	57	5.7	Good	1		Retain
3272C	Apple Spp.	Malus spp.	16	1.6	Fair	3		Retain
32730	Apple Spp.	Malus spp.	14	1.4	Fair	2		Retain
32744	Siberian Elm	Ulmus pumila	64	6.4	Fair	1		Retain
3274B	White Spruce	Picea glauca	15	1.5	Very Good	1		Retain
32807	Siberian Elm	Ulmus pumila	26	2.6	Good	1		Retain
3280E	Siberian Elm	Ulmus pumila	29	2.9	Very Good	1		Retain
3280C	Siberian Elm	Ulmus pumila	45	4.5	Excellent	1		Retain
328D3	Siberian Elm	Ulmus pumila	26	2.6	Fair	1		Retain
328DA	Eastern White Cedar	Thuja occidentalis	27	2.7	Good	3		Retain
329F0	Little-leaf Linden	Tilia cordata	37	3.7	Very Good	1		Retain
32A5C	Red Pine	Pinus resinosa	24	2.4	Very Good	1		Retain
32A53	Red Pine	Pinus resinosa	27	2.7	Good	1		Retain
34684	Honey-locust	Gleditsia triacanthos	25	2.5	Excellent	2		To be Removed
3469B	Honey-locust	Gleditsia triacanthos	32	3.2	Excellent	1		To be Removed
346A2	Honey-locust	Gleditsia triacanthos	30	3.0	Excellent	1		To be Removed
34A79	Little-leaf Linden	Tilia cordata	22	2.2	Very Good	1		Retain
34C00	Red Pine	Pinus resinosa	32	3.2	Very Good	1		Retain
34A32	Siberian Elm	Ulmus pumila	28	2.8	Fair	4		Retain
34C68	Honey-locust	Gleditsia triacanthos	37	3.7	Excellent	1		Retain
34C54	Honey-locust	Gleditsia triacanthos	21	2.1	Very Good	1		Retain
34CA4	Honey-locust	Gleditsia triacanthos	30	3.0	Very Good	1		Retain
34CD6	Red Pine	Pinus resinosa	22	2.2	Good	1		Retain
34CDD	Siberian Elm	Ulmus pumila	70	7.0	Good	1		Retain
34E18	Honey-locust	Gleditsia triacanthos	17	1.7	Good	1		Retain
35206	Honey-locust	Gleditsia triacanthos	30	3.0	Very Good	1		Retain
35374	Red Maple	Acer rubrum	13	1.3	Very Good	1		Retain
3537B	Little-leaf Linden	Tilia cordata	12	1.2	Good	1		Retain
35382	Red Maple	Acer rubrum	14	1.4	Good	1		Retain
35698	Red Pine	Pinus resinosa	27	2.7	Good	1		Retain
35695	Red Pine	Pinus resinosa	19	1.9	Fair	1		Retain
3569C	Red Pine	Pinus resinosa	29	2.9	Good	1		Retain
356A3	Red Pine	Pinus resinosa	25	2.5	Good	1		Retain
356AA	Red Pine	Pinus resinosa	26	2.6	Good	1	Large nest	Retain
356B1	Red Pine	Pinus resinosa	30	3.0	Good	1		Retain
356E2	Red Pine	Pinus resinosa	34	3.4	Good	1		Retain
356F6	Red Pine	Pinus resinosa	23	2.3	Good	1		Retain
356C6	Red Pine	Pinus resinosa	26	2.6	Fair	1		Retain
356C0	Red Pine	Pinus resinosa	21	2.1	Fair	1		Retain
356D4	Red Pine	Pinus resinosa	19	1.9	Fair	1		Retain
356D5	Red Pine	Pinus resinosa	26	2.6	Fair	1		Retain
356E2	Red Pine	Pinus resinosa	29	2.9	Good	1		Retain
35C50	Honey-locust	Gleditsia triacanthos	24	2.4	Excellent	1		Retain
35C33	Honey-locust	Gleditsia triacanthos	21	2.1	Good	1		Retain
35E88	Red Pine	Pinus resinosa	55	5.5	Excellent	1		Retain
35EA4	Red Pine	Pinus resinosa	55	5.5	Good	1		Retain
35EAD	Red Pine	Pinus resinosa	55	5.5	Excellent	1		Retain
35E81	Red Maple	Acer rubrum	29	2.9	Good	1		Retain
35F10	Little-leaf Linden	Tilia cordata	13	1.3	Fair	1	Growing between iron gate	Retain
35F17	Manitoba Maple	Acer negundo	15	1.5	Fair	3		Retain
35F1E	Red Maple	Acer rubrum	21	2.1	Good	1		Retain
35F25	Red Maple	Acer rubrum	35	3.5	Very Good	1		Retain
35F36	Norway Spruce	Picea canadensis	32	3.2	Excellent	1		Retain
35F30	Norway Spruce	Picea canadensis	28	2.8	Very Good	1		Retain
35F44	Norway Spruce	Picea canadensis	22	2.2	Very Good	2		Retain
35F4B	Norway Spruce	Picea canadensis	30	3.0	Good	2		Retain
35R8F	Honey-locust	Gleditsia triacanthos	47	4.7	Very Good	1		Retain
4	Honey-locust	Gleditsia triacanthos	13	1.3	Very Good	1		To be Removed
5	Common Red Pine	Pinus communis	13	1.3	Fair	2	Appears to have fire blight?	Retain
52538	Red Pine	Pinus resinosa	30	3.0	Very Good	1		Retain
52544	Red Pine	Pinus resinosa	31	3.1	Good	1		Retain
5258E	Apple Spp.	Malus spp.	13	1.3	Good	1		Retain
525E1	Norway Spruce	Picea canadensis	21	2.1	Good	1		Retain
6	Honey-locust	Gleditsia triacanthos	20	2.0	Very Good	1		Retain

*SOIL ADDED IN CRZ OF TREE 3211B IS NOT TO EXCEED 40mm DEPTH. AN ADDITIONAL LAYER OF ORGANIC, COARSE MULCH MAY BE ADDED TO A MAXIMUM COMBINED DEPTH OF 100mm.

FOTENN Planning + Design
 420 O'Connor Street
 Ottawa, ON, CANADA K2P 1W4
 613.730.5709
 fotenn.com



2085 CARLING AVENUE
CARLINGWOOD MALL NORTH PARKING
STRUCTURE DEMOLITION & REDESIGN

TREE CONSERVATION PLAN

designed / conçu ST / DF

PROJECT CONSULTANTS

DEVELOPER / OWNER
ANTHEM PROPERTIES GROUP
 1055 Dunsmuir Street
 Vancouver BC Canada V7X 1K8
 PHONE: 604-901-0240

PLANNING / LANDSCAPE
FOTENN PLANNING + DESIGN
 420 O'CONNOR ST.
 OTTAWA, ONTARIO K2P 1W4
 PHONE: 613-730-5709

CIVIL
EGIS GROUP
 750 Palladium Drive, Suite 310
 Kanata, ONTARIO K2V 1C7
 PHONE: 613-714-6174

SURVEYOR
ANNIS, O'SULLIVAN, VOLLEBEKK LTD.
 14 CONCOURSE GATE, SUITE 500
 NEPEAN, ON K2E 7S6
 PHONE: 613-727-0850

NOTE
 Property boundary information derived from
ANNIS, O'SULLIVAN, VOLLEBEKK LTD.
 Part 1 of Plan 4R-4502 and Block A of Registered
 Plan 316039

SITE INFORMATION

ZONING GM24[90]-h S125

LANDSCAPE BUFFER Per Schedule 125

SITE AREA
 Total Site Area: **14,392 m²**

TOTAL MALL PARKING

MIN	MAX	Provided
975	2117	1641

NORTH PARKING LOT (application area)
 Driveway Width **6.7m**
 Aisle Width **6.7m**
 Parking Space Dimensions **2.6 m x 5.2 m**
 Parking Space Provided **384**

LANDSCAPE AREA
 Total Site Area: **14,392 m²**
 Softscape Landscape Area: **2,770 m²**
 Hardscape Landscape Area: **598 m²**
 % Landscape Area: **23%**

SNOW MANAGEMENT
 See plan for proposed snow storage area.

NOTES:

DO NOT SCALE DRAWINGS;

NOTES ARE APPLICABLE TO ALL DRAWINGS IN THE SET;

CONTRACTOR SHALL NOT PROCEED WITH WORK UNTIL IN RECEIPT OF AN AUTHORIZED ISSUE FOR CONSTRUCTION (IFC) SET OF PLANS AND SPECIFICATIONS

Fotenn Consultants Inc. IS NOT RESPONSIBLE FOR ACCURACY OF BASE INFORMATION;

REFER TO CIVIL ENGINEERING DRAWINGS FOR GRADING & SITE SERVICING INFORMATION;

THE CONTRACTOR IS RESPONSIBLE FOR CONFIRMING SITE CONDITIONS AND REPORTING ANY DISCREPANCIES TO THE LANDSCAPE ARCHITECT;

THE CONTRACTOR IS RESPONSIBLE FOR CONFIRMING EXACT LOCATIONS OF ALL UNDERGROUND SERVICES AND OBTAINING CLEARANCE FROM ALL APPLICABLE UTILITIES. PROPOSED WORKS FOUND TO BE IN CONFLICT WITH UNDERGROUND SERVICES MAY BE ADJUSTED AT THE DIRECTION OF THE LANDSCAPE ARCHITECT;

LANDSCAPE ELEMENTS SHOWN ARE SUBJECT TO THE FINAL LOCATION OF UNDERGROUND SERVICES AND UTILITIES;

DO NOT INSTALL TREES ON PROPERTY / LOT LINES OR WITHIN DRAINAGE EASEMENTS;

PERFORM WORK IN ACCORDANCE WITH DETAILS AND SPECIFICATIONS;

ALL PLANT MATERIAL SHALL BE No. 1 NURSERY STOCK AND SHALL MEET OR EXCEED THE SPECIFICATION OF THE Canadian Standards for Nursery Stock, AS PUBLISHED BY THE Canadian Nursery Landscape Association;

SPECIES SUBSTITUTIONS ARE NOT PERMITTED WITHOUT PRIOR WRITTEN APPROVAL OF THE LANDSCAPE ARCHITECT;

ALL UN-PAVED SURFACES TO RECEIVE 150mm DEPTH TOPSOIL & SOD.

STANDARDS FOR TREE PLANTING:

NO PLANTING ON CORNERS OR ANYWHERE WHERE IT WOULD CREATE A SIGHT LINE CONCERN;

MAINTAIN A MINIMUM DISTANCE OF 7.5m FROM ALL BUILDINGS;

MAINTAIN A MINIMUM DISTANCE OF 2.5m FROM THE CURB FOR DECIDUOUS TREES AND 4.5m FOR CONIFEROUS TREES;

MAINTAIN A MINIMUM DISTANCE OF 1.5m FOR DECIDUOUS (4.5m FOR CONIFERS) FROM ANY SIDEWALK OR PRIVATE WALKWAY;

MAINTAIN A MINIMUM DISTANCE OF 1.2m FROM ALL DRIVEWAYS;

MAINTAIN A MINIMUM DISTANCE OF 2.5m FROM COMMUNITY MAILBOXES, LIGHT STANDARDS, FIRE HYDRANTS AND NO PLANTING IN FRONT OF HYDRANTS;

MAINTAIN A MINIMUM DISTANCE OF 3.0m FROM ALL HYDRO TRANSFORMERS;

MAINTAIN A MINIMUM DISTANCE OF 1.0m FROM ALL UNDERGROUND SERVICES;

MAINTAIN A MINIMUM DISTANCE OF 1.0m FROM ALL BELL AND CABLE BOXES;

MAINTAIN A MINIMUM DISTANCE OF 10.0 FROM BUS SHELTERS

IMPORTANT NOTICE FOR CONTRACTOR:

THE CITY OF OTTAWA REQUIRES A Certificate of Completion (F1) Landscape Works TO BE SUBMITTED AND SEALED BY THE LANDSCAPE ARCHITECT. CONTRACTORS ARE RESPONSIBLE FOR FAMILIARIZING THEMSELVES WITH THE REQUIREMENTS OF THIS PROCESS AND PROVIDING SUFFICIENT NOTICE TO THE LANDSCAPE ARCHITECT TO CONDUCT SITE REVIEWS **DURING INSTALLATION** OF TREES. THE 1 YEAR WARRANTY PERIOD SHALL NOT COMMENCE UNTIL THE LANDSCAPE ARCHITECT HAS SUBMITTED THE F1 Certificate.

Copyright Reserved
 The Copyrights to all designs and drawings are the property of Fotenn Consultants Inc. Unauthorized reproduction or use is forbidden. DO NOT SCALE DRAWING

Copyright réservés
 Les droits d'auteur à tous les modèles et dessins sont la propriété de Fotenn Consultants Inc. Reproduction ou utilisation non autorisée est interdite. NE PAS L'ÉCHELLE DE DESSIN

Client / Client



key plan / plan repère



legend / légende

- PROPERTY LINE
- LIMIT OF WORK
- SCHEDULE 125 OFFSET
- TREE PROTECTION FENCING (REFER TO TREE PROTECTION)
- EXISTING TREES (REFER TO TREE CONSERVATION REPORT)
- PROPOSED DECIDUOUS TREES (REFER TO PLANTING SCHEDULE)
- PROPOSED BUFFER PLANTING (REFER TO PLANTING SCHEDULE)
- PROPOSED PERENNIAL PLANTING (REFER TO PLANTING SCHEDULE)
- PROPOSED CONCRETE SIDEWALK (REFER TO CIVIL)
- REINSTATED SOD
- PROPOSED LIGHT STANDARD WITH PEDESTRIAN LIGHTING

SCALE 1:400
 0 5 10 20 30m

DO NOT SCALE DRAWINGS

rev'n	description / la description	yyyy/mm/dd
03	re-issue for site plan application	2026/05/06
02	re-issue for site plan application	2026/04/27
01	re-issue for site plan application	2026/04/17
00	issue for site plan application	2026/03/09

FOTENN Planning + Design
 420 O'Connor Street
 Ottawa, ON, CANADA K2P 1W4
 613.730.5709
 fotenn.com

north / le nord

stamp / le cachet

project / projet
2085 CARLING AVENUE
CARLINGWOOD MALL NORTH PARKING
STRUCTURE DEMOLITION & REDESIGN

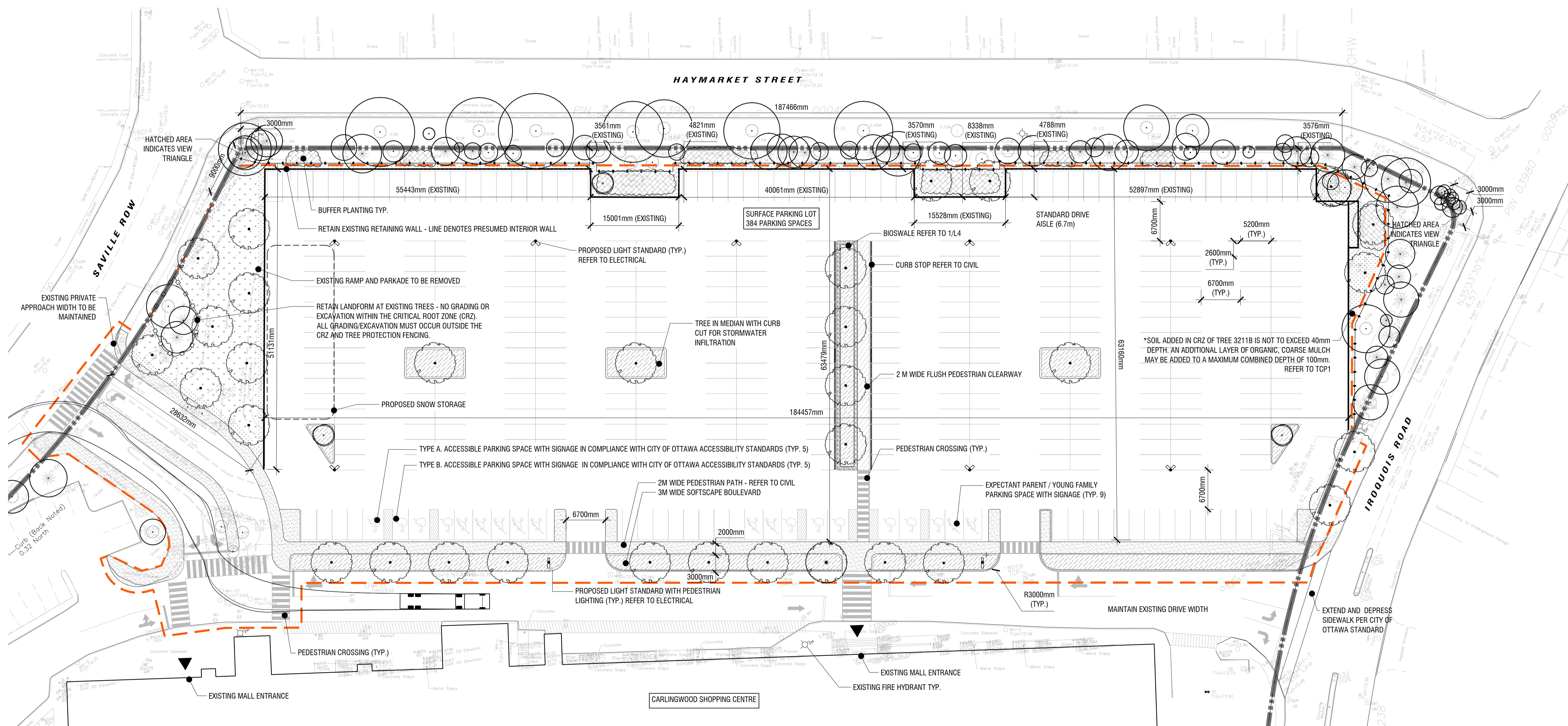
drawing / dessin

SITE/LANDSCAPE PLAN

designed / conçu	drawn / dessiné	reviewed / examiné
ST / DF	ST	DF
date	project number / No. du projet	
SEPT 2025	X ##-##	

drawing number / No. du dessin

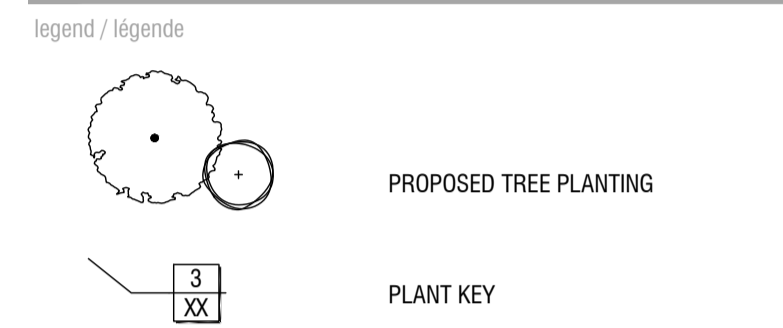
L1



1 SITE/LANDSCAPE PLAN
L1 1:400

PLOT INFORMATION: DWG NAME: P:\PROJECTS\2025\2025-06-16-1919\1919_Plan_1.dwg PLOT DATE: 2025-06-16 14:19:19 PLOT SIZE: ISO (A1) (841.0x1189.0) PLOTTED BY: Sylvain Tremblay LAST SAVED BY: s.tremblay

File #107-12-27-2021 / Plan #1943

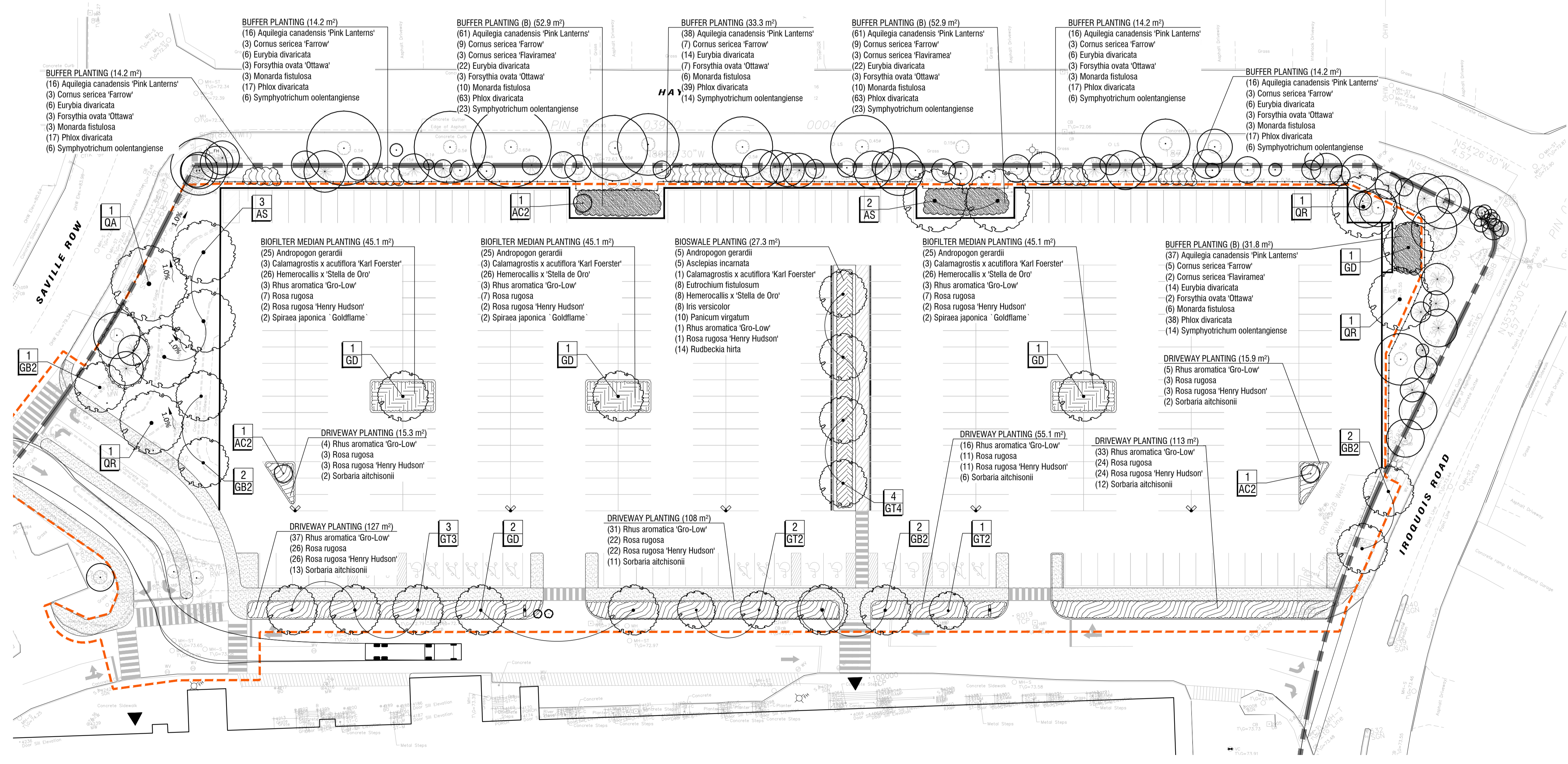


TREE PLANTING SCHEDULE

CODE	QTY	BOTANICAL NAME	COMMON NAME	SIZE / CONDITION / SPACING	NATIVE
DECIDUOUS TREES					
AS	5	Acer saccharum	Sugar Maple	70mm cal. / W.B.	Native
AC2	3	Amelanchier canadensis	Canadian Serviceberry	50mm cal. / W.B. (single stem, tree form)	Native
GB2	7	Ginkgo biloba 'Autumn Gold'	Autumn Gold Maidenhair Tree	70mm cal. / W.B.	Non-Native
GT3	3	Gleditsia triacanthos inermis 'Shademaster'	Shademaster Honey Locust	70mm cal. / W.B.	Cultivar
GT2	3	Gleditsia triacanthos inermis 'Sunburst'	Sunburst Honey Locust	60mm cal. / W.B.	Cultivar
GT4	4	Gleditsia triacanthos inermis 'Suncoke'	Sunburst Honey Locust	60mm cal. / W.B.	Cultivar
GD	6	Gymnocladus dioica 'Espresso'	Kentucky Coffeetree 'Espresso'	60mm cal. / W.B.	Native
QA	1	Quercus alba	White Oak	70mm cal. / W.B.	Native
QR	3	Quercus rubra	Northern Red Oak	60mm cal. / W.B.	Native

PERENNIAL PLANTING SCHEDULE

BIOFILTER MEDIAN PLANTING 135.3 m ²					
Andropogon gerardii / Big Bluestem	75	#1 Pot / 75cm sp.			
Calamagrostis x acutiflora 'Karl Foerster' / Karl Foerster Feather Reed Grass	9	#1 Pot / 60cm sp.			
Hemerocallis x 'Stella de Oro' / Stella de Oro Daylily	78	#1 Pot / 60cm sp.			
Rhus aromatica 'Gro-Low' / Gro-Low Fragrant Sumac	9	#1 Pot / Refer to plan for spacing			
Rosa rugosa / Rugosa Rose	21	#2 Pot / 90cm sp.			
Rosa rugosa 'Henry Hudson' / Henry Hudson Rose	6	#3 Pot / 100cm sp.			
Spiraea japonica 'Goldflame' / Goldflame Japanese Spirea	6	#2 Pot / 100cm sp.			
BIOSWALE PLANTING 94 m ²					
Andropogon gerardii / Big Bluestem	17	#1 Pot / 75cm sp.			
Asclepias incarnata / Swamp Milkweed	17	#1 Pot / 75cm sp.			
Calamagrostis x acutiflora 'Karl Foerster' / Karl Foerster Feather Reed Grass	4	#1 Pot / 60cm sp.			
Eutrochium fistulosum / Hollow Joe Pye Weed	27	#1 Pot / 60cm sp.			
Hemerocallis x 'Stella de Oro' / Stella de Oro Daylily	27	#1 Pot / 60cm sp.			
Iris versicolor / Blue Flag	27	#1 Pot / 60cm sp.			
Panicum virgatum / Switch Grass	34	#1 Pot / 75cm sp.			
Rhus aromatica 'Gro-Low' / Gro-Low Fragrant Sumac	3	#1 Pot / Refer to plan for spacing			
Rosa rugosa 'Henry Hudson' / Henry Hudson Rose	5	#3 Pot / 100cm sp.			
Rudbeckia hirta / Black-eyed Susan	48	#1 Pot / 45cm sp.			
DRIVEWAY PLANTING 434.3 m ²					
Rhus aromatica 'Gro-Low' / Gro-Low Fragrant Sumac	126	#1 Pot / Refer to plan for spacing			
Rosa rugosa / Rugosa Rose	89	#2 Pot / 90cm sp.			
Rosa rugosa 'Henry Hudson' / Henry Hudson Rose	89	#3 Pot / 100cm sp.			
Sorbaria atchisonii / False Spiraea	46	#2 Pot / 100cm sp.			
BUFFER PLANTING 90.1 m ²					
Aquilegia canadensis 'Pink Lanterns' / Pink Lanterns Eastern Columbine	102	#1 Pot / 30cm cp.			
Cornus sericea 'Farrow' / Arctic Fire® Red Twig Dogwood	19	#3 Pot / 125cm sp.			
Eurybia divaricata / White Wood Aster	38	#1 Pot / 50cm sp.			
Forsythia ovata 'Ottawa' / Early Forsythia	19	#3 Pot / 100cm sp.			
Monarda fistulosa / Bergamot	18	#1 Pot / 75cm sp.			
Phlox divaricata / Woodland Phlox	107	#1 Pot / 30cm cp.			
Symphytichum oolentangiense / Sky Blue Aster	38	#1 Pot / 50cm sp.			
BUFFER PLANTING (B) 137.6 m ²					
Aquilegia canadensis 'Pink Lanterns' / Pink Lanterns Eastern Columbine	159	#1 Pot / 30cm cp.			
Cornus sericea 'Farrow' / Arctic Fire® Red Twig Dogwood	23	#3 Pot / 125cm sp.			
Cornus sericea 'Flaviramea' / Yellow Twig Dogwood	8	#3 Pot / 200cm sp.			
Eurybia divaricata / White Wood Aster	58	#1 Pot / 50cm sp.			
Forsythia ovata 'Ottawa' / Early Forsythia	8	#3 Pot / 100cm sp.			
Monarda fistulosa / Bergamot	26	#1 Pot / 75cm sp.			
Phlox divaricata / Woodland Phlox	164	#1 Pot / 30cm cp.			
Symphytichum oolentangiense / Sky Blue Aster	60	#1 Pot / 50cm sp.			



rev'n	description / la description	yyyy/mm/dd
03	re-issue for site plan application	2026/05/06
02	re-issue for site plan application	2026/04/27
01	re-issue for site plan application	2026/04/17
00	issue for site plan application	2026/03/09

FOTENN Planning + Design
420 O'Connor Street
Ottawa, ON, CANADA K2P 1W4
613.730.5709
fotenn.com

north / le nord stamp / le cachet

project / projet
2085 CARLING AVENUE
CARLINGWOOD MALL NORTH PARKING
STRUCTURE DEMOLITION & REDESIGN

PLANTING PLAN

designed / conçu ST / DF	drawn / dessiné ST	reviewed / examiné DF
date SEPT 2025	project number / No. du projet X ##-##	

drawing number / No. du dessin
L2

1
L2
PLANTING PLAN
1:400



key plan / plan repère



legend / légende

- LIMIT OF WORK
- EXISTING TREES AND HEDGEROW CANOPY (REFER TO NOTES)
- CRITICAL ROOTING ZONE (CRZ)
- APPROXIMATE CANOPY AT 40 YEARS
- PROPOSED TREE
- EXTENT OF GROWING MEDIUM



03	re-issue for site plan application	2026/05/06
02	re-issue for site plan application	2026/04/27
01	re-issue for site plan application	2026/04/17
00	issue for site plan application	2026/03/09
rev'n	description / la description	yyyy/mm/dd

FOTENN Planning + Design
420 O'Connor Street
Ottawa, ON, CANADA K2P 1W4
613.730.5709
fotenn.com

north / le nord

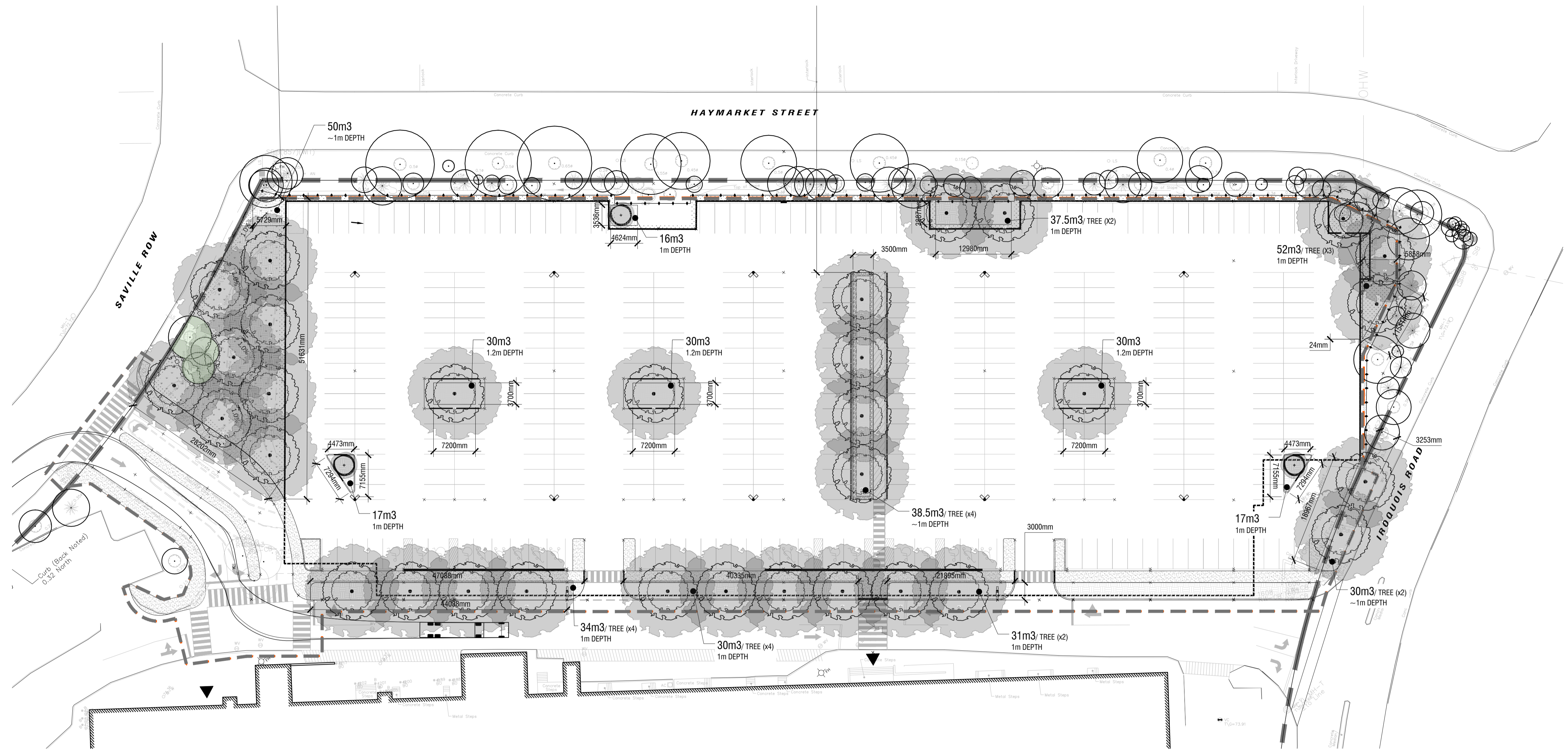
stamp / le cachet

project / projet
2085 CARLING AVENUE
CARLINGWOOD MALL NORTH PARKING
STRUCTURE DEMOLITION & REDESIGN

drawing / dessin
TREE 40YR PROJECTED
CANOPY COVER AND SOIL
VOLUME PLAN

designed / conçu	drawn / dessiné	reviewed / examiné
ST / DF	ST	DF
date	project number / No. du projet	
SEPT 2025	X ##-##	

drawing number / No. du dessin
L3



1 TREE 40YR PROJECTED CANOPY COVER AND SOIL VOLUME PLAN
L3 1:400

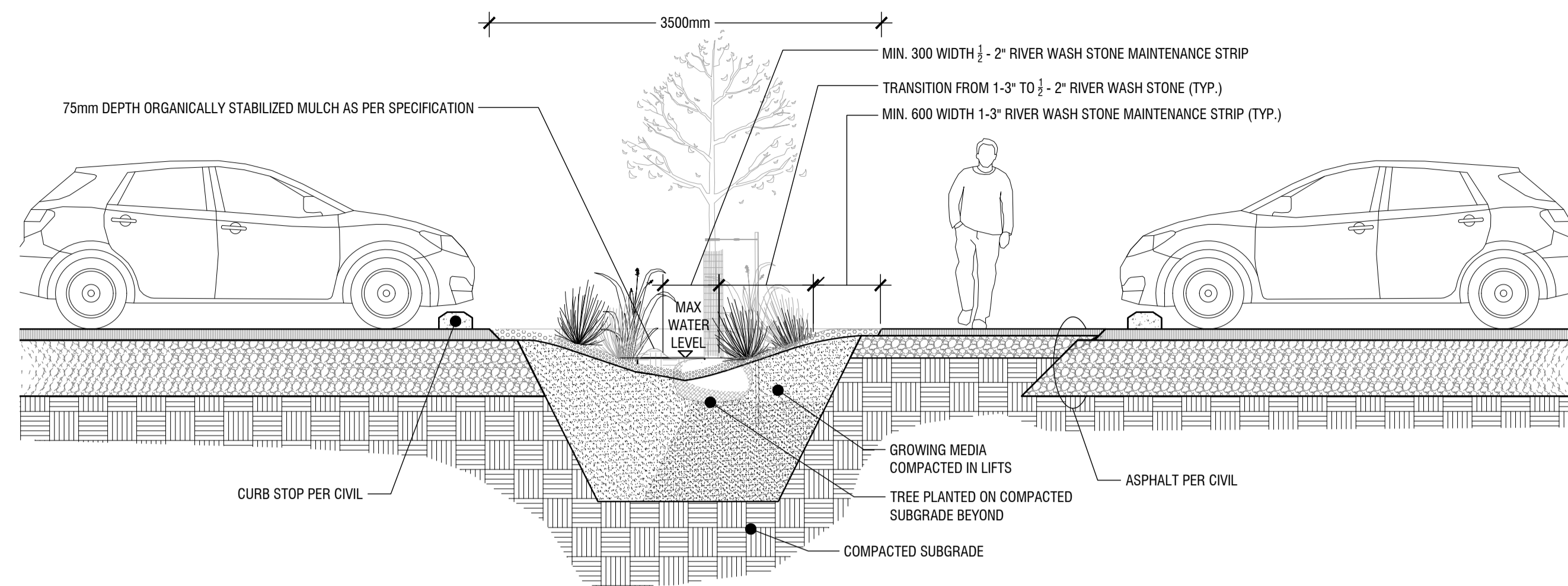
PROPOSED TREE CANOPY PROJECTIONS (40 YEAR) & SOIL VOLUME REQUIREMENTS

CANOPY PROJECTIONS (NTS)	AVERAGE CROWN AREA PER TREE (m ²)	QTY OF TREES	TOTAL TREE CANOPY COVERAGES	PROPOSED CANOPY COVERAGE	SOIL VOLUME REQUIREMENT*	CONTINUOUS SPACE SOIL VOLUME (i.e. 2 TREES/1 GREENSPACE)
SMALL DECIDUOUS TREE (AVG. CANOPY DIAMETER = 4.5m)	16m ²	3	48m ²	6480m ²	25m ³ 4100mm	2500mm
MEDIUM DECIDUOUS TREE (AVG. CANOPY DIAMETER = 8.5m)	57m ²	0	0m ²	64m ²	30m ³ 5000mm	2400mm
LARGE DECIDUOUS TREE (AVG. CANOPY DIAMETER = 16m)	201m ²	32	6,432m ²	14,921m ²	6300mm	2400mm
				TOTAL COVERAGE	3160mm	10000mm
				6,544m ²		
				44%		

- NOTES:**
- CALCULATIONS HAVE BEEN MADE TO PROJECT A 40 YEAR HORIZON AND TYPICAL GROWTH RATES FOR ALL TREES
 - PROJECTED CANOPY DIAMETERS AND AREAS ARE BASED ON AN AVERAGE OF THE TREES PROPOSED FOR THE SITE
 - PROJECTED CANOPY AREAS FOR EXISTING TREES ARE BASED ON AVERAGE OF THE TREES PLANTED AS PART OF PREVIOUS PHASES
 - OVERLAPPING CANOPIES AREAS FOR EXISTING TREES ARE ONLY COUNTED ONCE WHERE APPLICABLE
 - CANOPY CALCULATION DOES NOT ACCOUNT FOR EXISTING TREE CANOPY ON ADJACENT SITES/IN ROW OVERLAPPING SITE
 - CANOPY CALCULATIONS INCLUDE OVERLAPPING OF ADJACENT TREE CANOPIES WHERE APPLICABLE
 - *SOIL VOLUME REQUIREMENT IS BASED ON THE CITY OF OTTAWA'S 'Tree Planting in Sensitive Marine Clay Soils - 2017 Guidelines' DRAFT Version 2.0 DATED JANUARY 11, 2019

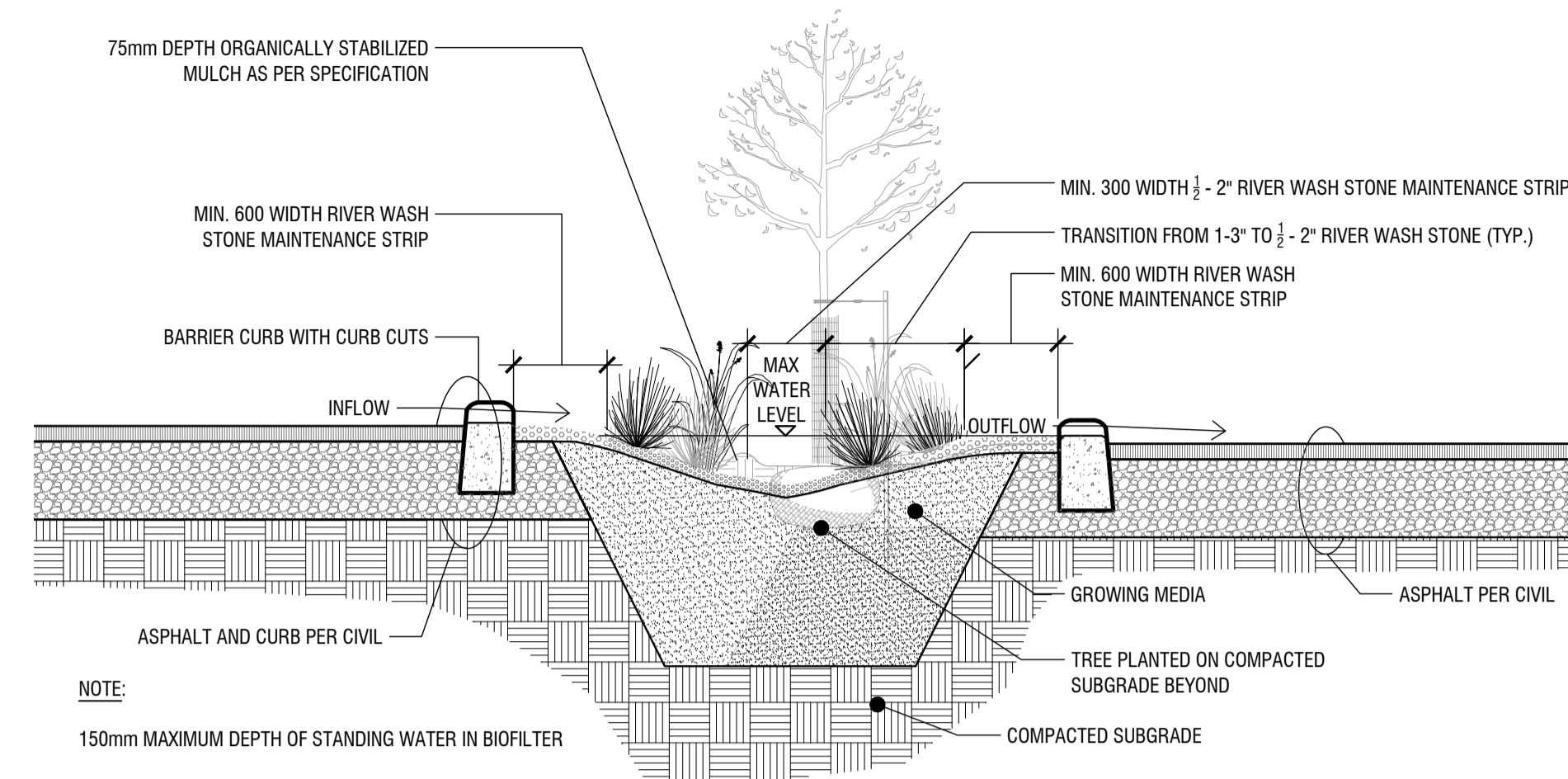
PLOT DATE: 2026-05-06 10:00:00 AM PLOT SIZE: 501mm x 410mm PLOTTED BY: Sydney Truesdale LAST SAVED BY: shirahide
 FILE INFORMATION: DWG NAME: P:\PROJECTS\2026\2085 Carlingwood Mall Parking - 03\03\2026\Drawings\Structure Demolition\77 Drawings\Structure Demolition\Tree Planting - 03\03\2026\Drawings\Canopy and Soil Volume - 03\03\2026\Drawings\Canopy and Soil Volume - 03\03\2026.dwg

File #107-12-27-2021 / Plan #1043



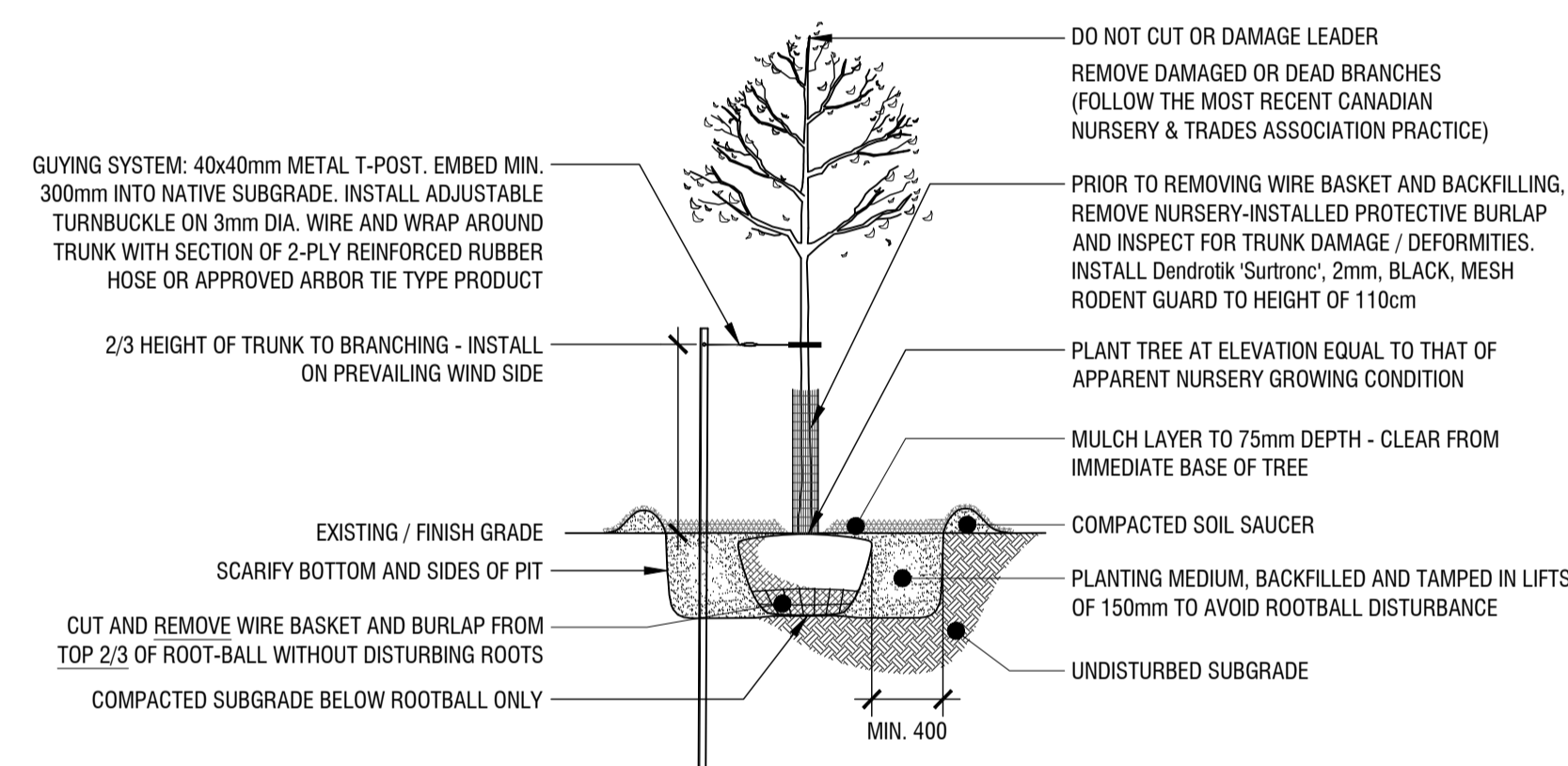
NOTE:
150mm MAXIMUM DEPTH OF STANDING WATER IN SWALES

1 BIOSWALE DETAIL
L4 n.t.s.

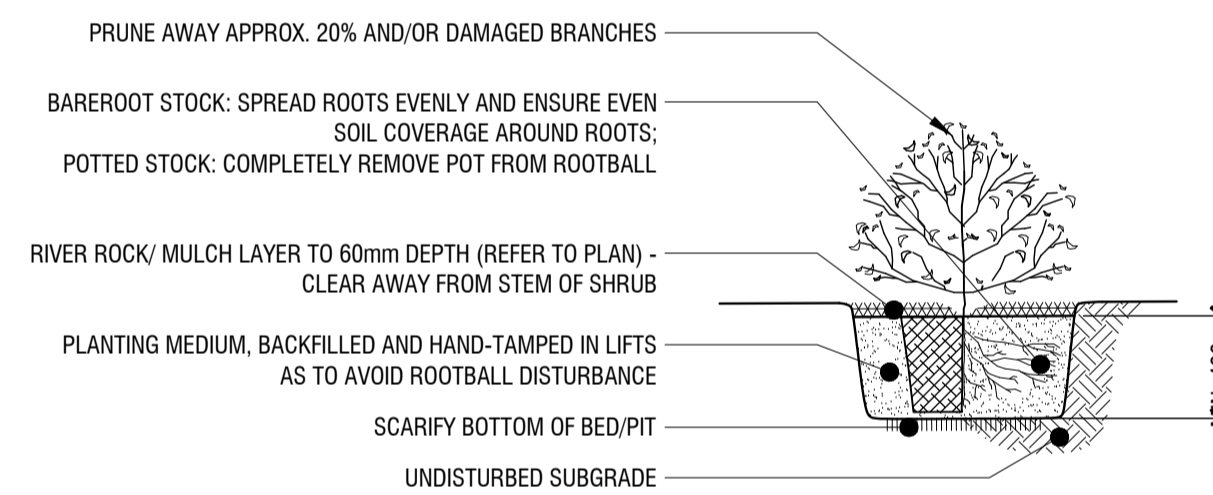


NOTE:
150mm MAXIMUM DEPTH OF STANDING WATER IN BIOFILTER

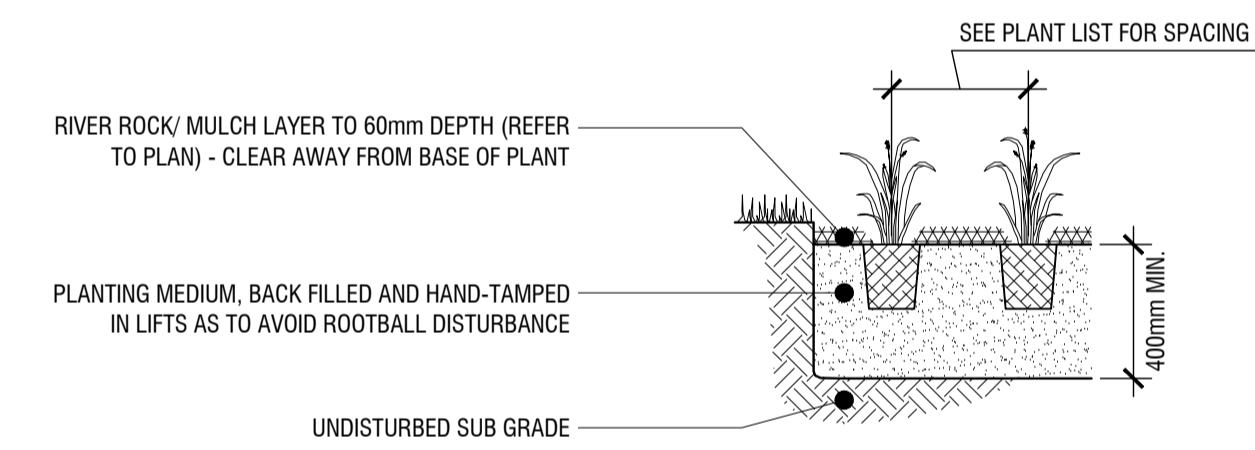
2 TREED BIOFILTER MEDIAN
L4 n.t.s.



3 TREE PLANTING DETAIL
L4 n.t.s.



4 SHRUB PLANTING DETAIL
L4 n.t.s.



5 PERENNIAL PLANTING DETAIL
L4 n.t.s.

rev'n	description / la description	yyyy/mm/dd
03	re-issue for site plan application	2026/05/06
02	re-issue for site plan application	2026/04/27
01	re-issue for site plan application	2026/04/17
00	issue for site plan application	2026/03/09

FOTENN Planning + Design
420 O'Connor Street
Ottawa, ON, CANADA K2P 1W4
613.730.5709
fotenn.com

north / le nord stamp / le cachet



project / projet
2085 CARLING AVENUE
CARLINGWOOD MALL NORTH PARKING
STRUCTURE DEMOLITION & REDESIGN

drawing / dessin

CONSTRUCTION DETAILS

designed / conçu	drawn / dessiné	reviewed / examiné
ST / DF	ST	DF
date	project number / No. du projet	
SEPT 2025	X ##-##	

drawing number / No. du dessin

L4