

**NOTES:**

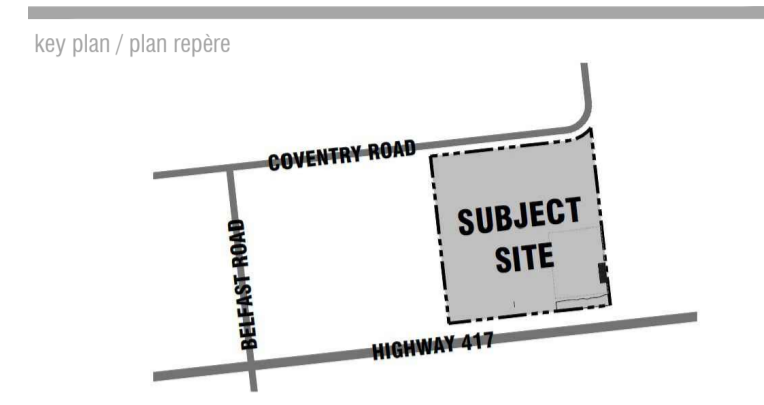
DO NOT SCALE DRAWINGS;

SITE PLAN SUPPLIED BY Turner Fleischer Architects Inc., SURVEY SUPPLIED BY Annis, O'Sullivan, Vollebek Ltd. Fotenn Consultants Inc. IS NOT RESPONSIBLE FOR ACCURACY OF BASE INFORMATION;

GENERAL VEGETATIVE COVER INVENTORY IS BASED ON FIELD REVIEW VISIT CONDUCTED JULY AND DECEMBER OF 2023 BY IFS ASSOCIATES;

THIS PLAN IS TO BE READ IN CONJUNCTION WITH "TREE CONSERVATION REPORT FOR 500 COVENTRY ROAD, OTTAWA" PREPARED BY IFS ASSOCIATES;

Copyright Reserved  
 The Copyright to all designs and drawings are the property of Fotenn Consultants Inc. Unauthorized reproduction or use is forbidden. DO NOT SCALE DRAWING  
 Copyright réservés  
 Les droits d'auteur à tous les modèles et dessins sont la propriété de Fotenn Consultants Inc. Reproduction ou utilisation non autorisée est interdite. NE PAS L'ÉCHELLE DE DESSIN



- Legend / légende
- EXISTING TREES AND HEDGEROW TREE-LINE AS SURVEYED
  - EXISTING TREES NOT PICKED UP IN SURVEY
  - CRITICAL ROOTING ZONE (CRZ IDENTIFIED - REFER TO TABLE # FOR RADIUS OF CRZ)
  - TREE PROTECTION FENCING - REFER TO T-C2
  - EXISTING TREES TO BE REMOVED

rev'n	description / la description	yyyy/mm/dd
09	Issue for submission	2026/05/05
08	Issue for submission	2026/04/02
07	Issue for coordination	2026/03/31
06	Issue for coordination	2026/03/27
05	Issue for submission	2026/01/16
04	Issue for coordination	2026/01/07
03	Issue for coordination	2025/12/19

**FOTENN Planning + Design**  
 420 O'Connor Street  
 Ottawa, ON, CANADA K2P 1W4  
 613.730.5709  
 fotenn.com

north / le nord stamp / le cachet

project / projet  
**500 COVENTRY ROAD**  
 (LOT 1, REGISTERED PLAN 747, CITY OF OTTAWA)

drawing / dessin  
**TREE CONSERVATION PLAN - EXISTING CONDITIONS**

designed / conçu	drawn / dessiné	reviewed / examiné
DF / SP	SP / DF	ST / DF
date / date		
Dec 2023		
drawing number / No. du dessin		

**TCR1**

PLOT INFORMATION: DWG NAME: P:\PROJECTS\Morguard\500 Coventry\LANDSCAPE\01\_Design\500 Coventry SHEET TCR1.dwg PLOT DATE: 2026-05-04 16:48:39 PM PLOT DATE: 2026-05-04 16:48:39 PM PLOTTED BY: Sydney Fusco - LAST SAVED BY: s.fusco

File #007-12-24-0151 | Plan #1827



**NOTES:**

DO NOT SCALE DRAWINGS;

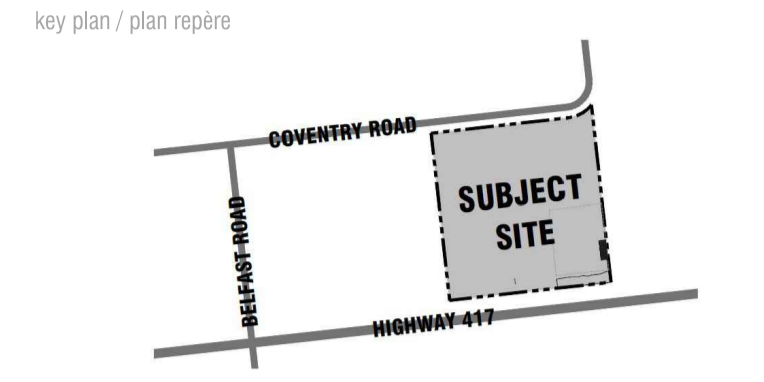
SITE PLAN SUPPLIED BY Turner Fleischer Architects Inc., SURVEY SUPPLIED BY Annis, O'Sullivan, Vollebek Ltd., Fotenn Consultants Inc. IS NOT RESPONSIBLE FOR ACCURACY OF BASE INFORMATION;

GENERAL VEGETATIVE COVER INVENTORY IS BASED ON FIELD REVIEW VISIT CONDUCTED JULY AND DECEMBER OF 2023 BY IFS ASSOCIATES;

THIS PLAN IS TO BE READ IN CONJUNCTION WITH "TREE CONSERVATION REPORT FOR 500 COVENTRY ROAD, OTTAWA" PREPARED BY IFS ASSOCIATES;

Copyright Reserved  
 The Copyright to all designs and drawings are the property of Fotenn Consultants Inc. Unauthorized reproduction or use is forbidden. DO NOT SCALE DRAWING

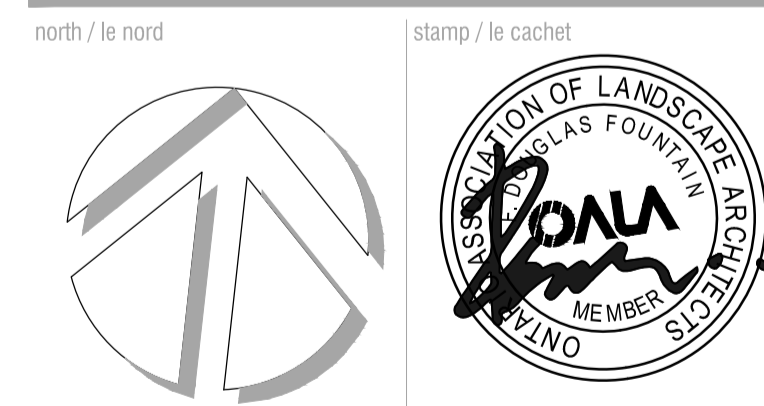
Copyright réservés  
 Les droits d'auteur à tous les modèles et dessins sont la propriété de Fotenn Consultants Inc. Reproduction ou utilisation non autorisée est interdite. NE PAS L'ÉCHELLE DE Dessin



- Legend / Légende
- EXISTING TREES AND HEDGEROW TREE-LINE AS SURVEYED
  - EXISTING TREES NOT PICKED UP IN SURVEY
  - CRITICAL ROOTING ZONE (CRZ) IDENTIFIED - REFER TO TABLE # FOR RADIUS OF CRZ
  - TREE PROTECTION FENCING - REFER 1-TC2
  - EXISTING TREES TO BE REMOVED

rev'n	description / la description	yyyy/mm/dd
09	Issue for submission	2026/05/05
08	Issue for submission	2026/04/02
07	Issue for coordination	2026/03/31
06	Issue for coordination	2026/03/27
05	Issue for submission	2026/01/16
04	Issue for coordination	2026/01/07
03	Issue for coordination	2025/12/19

**FOTENN Planning + Design**  
 420 O'Connor Street  
 Ottawa, ON, CANADA K2P 1W4  
 613.730.5709  
 fotenn.com



project / projet  
**500 COVENTRY ROAD**  
 (LOT 1, REGISTERED PLAN 747, CITY OF OTTAWA)

drawing / dessin  
**TREE CONSERVATION PLAN - PROPOSED DEVELOPMENT**

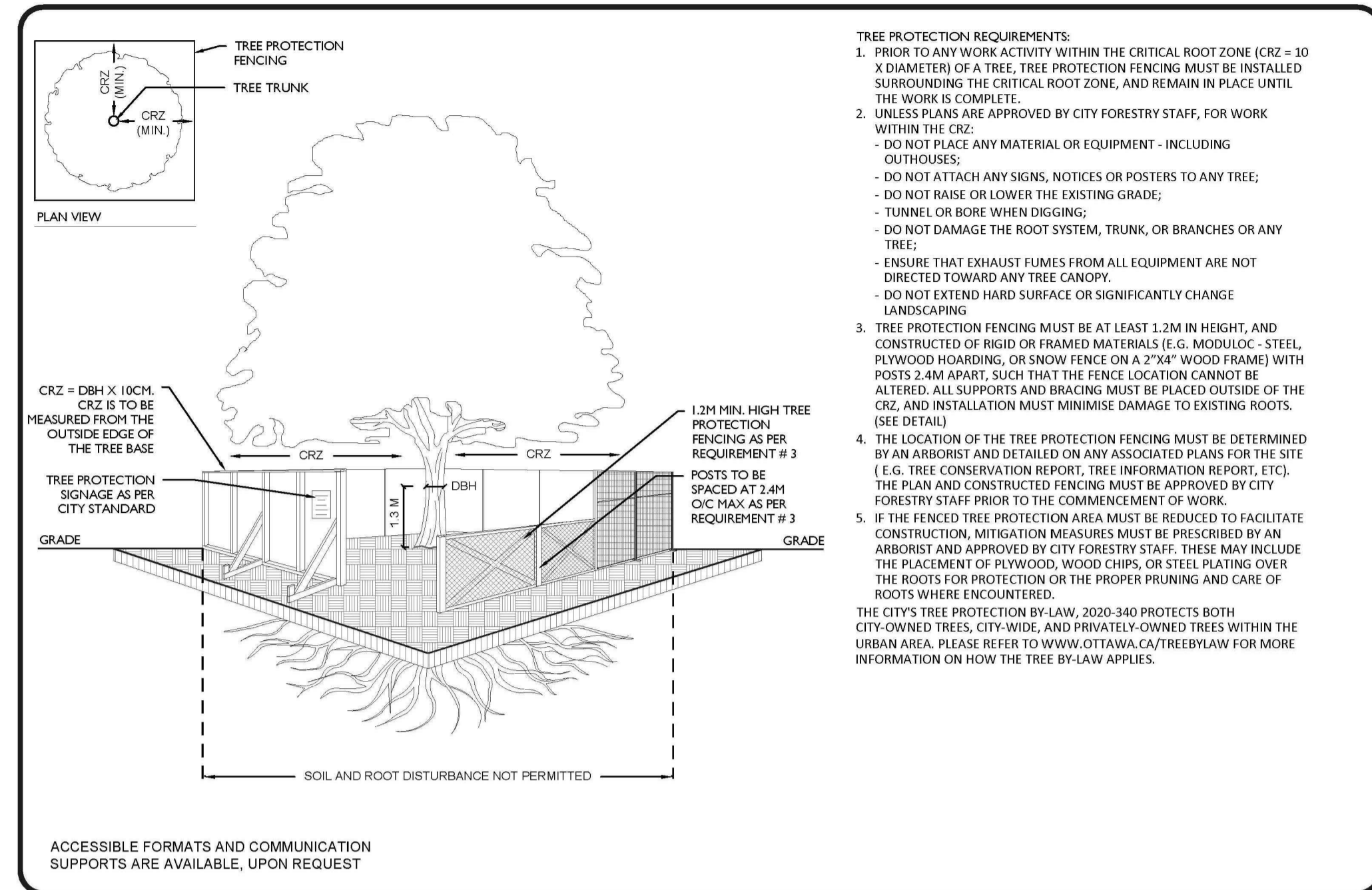
designed / conçu	drawn / dessiné	reviewed / examiné
DF / SP	SP / DF	ST / DF
date <b>Dec 2023</b>		
drawing number / No. du dessin		

**TCR2**

**1 TREE CONSERVATION PLAN**  
**TCR2 1:400**

PLOT INFORMATION: DWG NAME: P:\PROJECTS\Morguard\500 Coventry\LANDSCAPE\07 - Morguard\500 Coventry\TREE TCR2.dwg PLOT DATE: 2026-05-04 13:08:11 PM SHEET SIZE: B3 (11x17 IN) SHEET NUMBER: 01 (OF 01) PLOTTED BY: System Tuxtable LAST SAVED BY: struhalde

File #007-12-24-0151 | Plan #1022



**ACCESSIBLE FORMATS AND COMMUNICATION SUPPORTS ARE AVAILABLE, UPON REQUEST**

**SCALE:** NTS

**DATE:** MARCH 2021

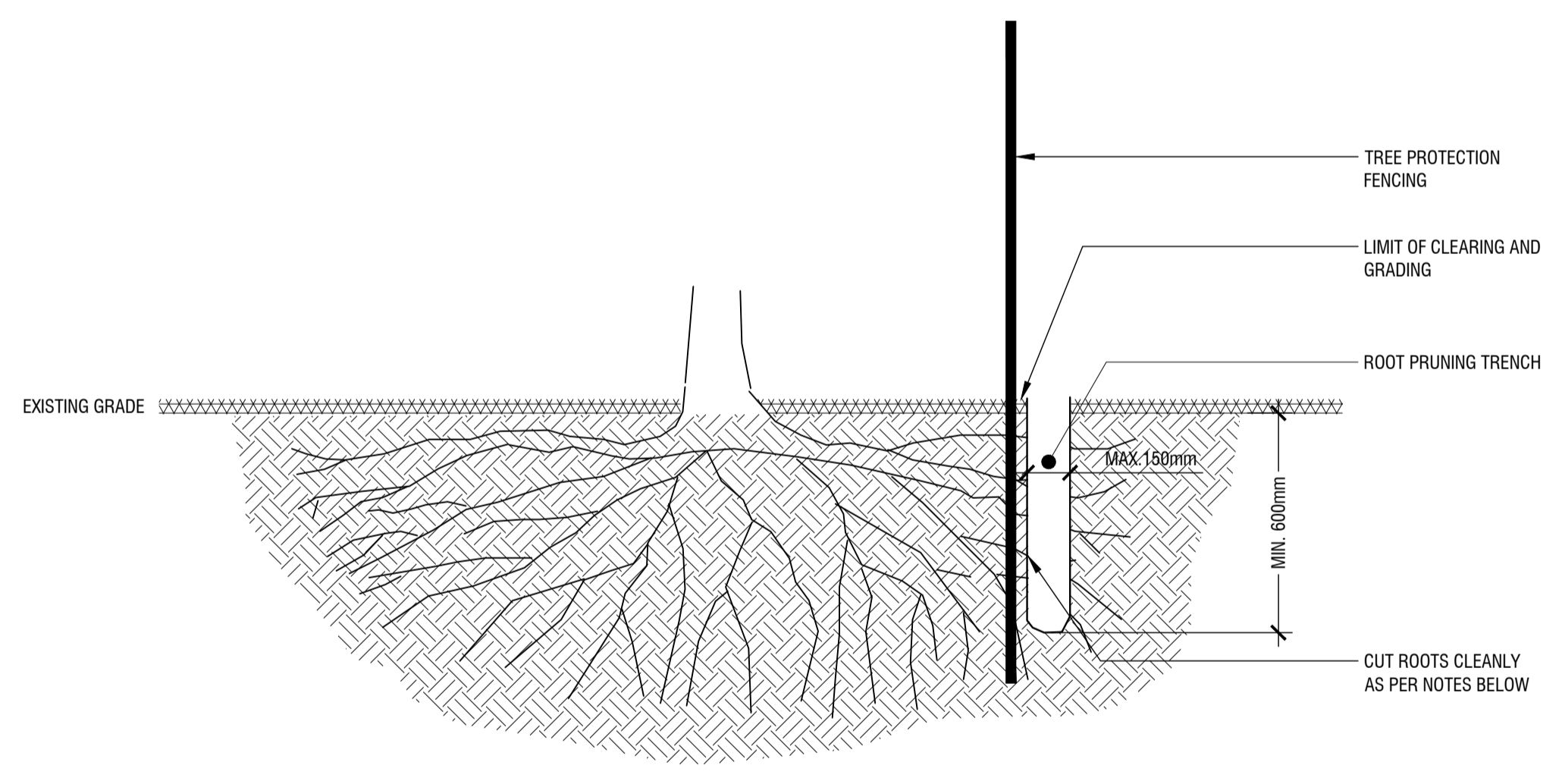
**DRAWING NO.:** 1 of 1

**OTTAWA**

**TREE PROTECTION SPECIFICATION**

TO BE IMPLEMENTED FOR RETAINED TREES, BOTH ON SITE AND ON ADJACENT SITES, PRIOR TO ANY TREE REMOVAL OR SITE WORKS AND MAINTAINED FOR THE DURATION OF WORK ACTIVITIES ON SITE.

**1 CITY OF OTTAWA TREE PROTECTION DETAIL**  
n.t.s.



- NOTES:**
- PROPER ROOT PRUNING TECHNIQUE REQUIRED WHEN TREE ROOTS ENCOUNTERED DURING EXCAVATION.
  - EXCAVATIONS WITHIN DRIPLINE SHOULD BE BY DIRECTIONAL MICRO-TUNNELLING AND BORING. OUTSIDE THE DRIPLINE, ROOTS SHOULD BE CUT CLEANLY (AS PER ABOVE DRAWING) WITH PRUNING SHEARS OR A SAW WIPED WITH ALCOHOL BEFORE EACH CUT.
  - AFTER ROOTS ARE CLEANLY CUT, THE AREA SHOULD BE BACKFILLED WITH SUITABLE MATERIAL (TO BE APPROVED BY LANDSCAPE ARCHITECT) TO PREVENT DESICCATION; WHERE APPROPRIATE, THE TREES SHALL UNDERGO AN OVERALL PRUNING TO RESTORE TREE APPEARANCE AND / OR RESTORE THE BALANCE BETWEEN TOP GROWTH AND ROOTS. DO NOT PRUNE LEADERS.

**2 ROOT PRUNING DETAIL**  
n.t.s.

TABLE 1: TREE INVENTORY AND ASSESSMENT						
NO.	SPECIES	D.B.H. <sup>1</sup> (cm)	OWNERSHIP <sup>2</sup>	TREE CONDITION, AGE CLASS, CONDITION NOTES & SPECIES ORIGIN <sup>3</sup> / STATUS (TO BE PRESERVED AND PROTECTED OR REMOVED)	STATUS <sup>4</sup>	CRZ <sup>5</sup> (m)
1	Russian-olive (Elaeagnus angustifolia)	17 avg.	Private	Poor; mature; tri-dominant stems from grade, one stem has failed; introduced invasive species / to be preserved and protected	To be <b>RETAINED</b>	1.7 Avg.
2	Basswood (Tilia americana)	21 & 31	Shared	Fair; mature; dominant stem with suppressed secondary stem on north; likely originated as coppice growth; native species / to be preserved and protected	To be <b>RETAINED</b>	2.1 & 3.1
3	Scots pine (Pinus sylvestris)	54.0	Private	Fair; very mature; single dominant stem; vine growth into lower crown; understory of buckthorn and Russian-olive; good crown density, annual increment and needle colour; introduced invasive species / to be preserved and protected	To be <b>RETAINED</b>	5.4
4	Honey-locust (Gleditsia triacanthos)	10.0	Private	Fair; immature; suffering from growing stress due to very limited available rooting area; introduced species to Eastern Ontario / to be preserved and protected	To be <b>RETAINED</b>	1.0
5	Honey-locust (Gleditsia triacanthos)	10.0	Private	Fair; immature; suffering from growing stress due to very limited available rooting area; introduced species to Eastern Ontario / to be preserved and protected	To be <b>RETAINED</b>	1.0
6	Honey-locust (Gleditsia triacanthos)	10.0	Private	Fair; immature; suffering from growing stress due to very limited available rooting area; introduced species to Eastern Ontario / to be preserved and protected	To be <b>RETAINED</b>	1.0
7	Honey-locust (Gleditsia triacanthos)	10.0	Private	Fair; immature; suffering from growing stress due to very limited available rooting area; introduced species to Eastern Ontario / to be preserved and protected	To be <b>RETAINED</b>	1.0
8	Honey-locust (Gleditsia triacanthos)	17.0	Private	Fair; maturing; suffering from growing stress due to moderately limited available rooting area; introduced species to Eastern Ontario / to be preserved and protected	To be <b>RETAINED</b>	1.7
9	Honey-locust (Gleditsia triacanthos)	24.0	Private	Fair; maturing; suffering from growing stress due to mildly limited available rooting area; crown asymmetric towards north; introduced species to Eastern Ontario / to be preserved and protected	To be <b>RETAINED</b>	2.4
10	Little-leaf linden (Tilia cordata)	34.0	Private	Good; mature; tri-dominant stems at 3m - co-dominant and one suppressed; introduced species / to be preserved and protected	To be <b>RETAINED</b>	3.4
11	Little-leaf linden (Tilia cordata)	31.0	Private	Fair; mature; central stem with suppressed laterals at 2m on south and 3m on southeast; salt spray injury to lower crown; introduced species / to be preserved and protected	To be <b>RETAINED</b>	3.1
12	Little-leaf linden (Tilia cordata)	10.0	Private	"Poor; immature; covered in heavy vine growth; introduced species / to be preserved and protected"	To be <b>RETAINED</b>	1.0
13	Little-leaf linden (Tilia cordata)	31.0	Private	Fair; mature; central dominant stem with suppressed laterals at 3.5m on north and south; salt spray injury to lower crown; introduced species / to be preserved and protected	To be <b>RETAINED</b>	3.1
14	Little-leaf linden (Tilia cordata)	29.0	Private	Fair; mature; central with suppressed laterals at 3m on south and 3.5m on north; salt spray injury to lower crown; introduced species / to be preserved and protected	To be <b>RETAINED</b>	2.9
15	Scots pine (Pinus sylvestris)	20.0	Private	"Good; maturing; generally upright form; co-dominant leaders at 2m - parallel; good crown density, annual increment and needle colour; introduced invasive species / to be preserved and protected"	To be <b>RETAINED</b>	2.0
16	Scots pine (Pinus sylvestris)	26.0	Private	Good; mature; central stem divergent towards northeast; suppressed, upsweep lateral at 2m on south; good crown density, annual increment and needle colour; introduced invasive species / to be preserved and protected	To be <b>RETAINED</b>	2.6
17	Scots pine (Pinus sylvestris)	26.0	Private	Fair; mature; central stem very divergent towards northeast; competing laterals at 2-2.5m on south and suppressed lateral at 1.25m on southeast; good crown density, annual increment and needle colour; introduced invasive species / to be preserved and protected	<b>REMOVE</b> to accommodate future park block servicing	2.6
18	Honey-locust (Gleditsia triacanthos)	20.0	Private	Good; maturing; co-dominant stems at 1.5m with suppressed lateral towards east; introduced species to Eastern Ontario / to be preserved and protected	To be <b>RETAINED</b>	2.0
19	Honey-locust (Gleditsia triacanthos)	18.0	Private	Very good; maturing; central, dominant stem with competing leaders near apex; introduced species to Eastern Ontario / to be preserved and protected	To be <b>RETAINED</b>	1.8
20	Scots pine (Pinus sylvestris)	26.0	Private	Good; mature; central stem with generally symmetric crown; good crown density, annual increment and needle colour; introduced invasive species / to be preserved and protected	To be <b>RETAINED</b>	2.6
21	Scots pine (Pinus sylvestris)	20.0	Private	Fair; mature; living crown held high due to vine growth and influence of Manitoba maple growth below; fair crown density, annual increment and needle colour; introduced invasive species / to be preserved and protected	To be <b>RETAINED</b>	2.0
22	Scots pine (Pinus sylvestris)	28.0	Private	"Fair; mature; central stem with generally symmetric crown; good crown density, annual increment and needle colour; introduced invasive species / to be preserved and protected"	To be <b>RETAINED</b>	2.8
23	Colorado spruce (Picea pungens)	27.0	Private	Good; mature; lower crown asymmetric due to nearby buckthorn growth; sweep in main stem at 7m; good crown density, annual increment and needle colour; introduced species / to be preserved and protected	To be <b>RETAINED</b>	2.7
24	Colorado spruce (Picea pungens)	28.0	Private	Poor; mature; central stem with suppressed lateral at 2.5m; poor crown density, annual increment and needle colour; sweep in main stem at 7m; introduced species / to be preserved and protected	To be <b>RETAINED</b>	2.8
25	Colorado spruce (Picea pungens)	26.0	Private	Fair; mature; central stem with sweep at 5m; lower crown asymmetric due to influence of nearby Scots pine and Manitoba maples; good crown density, annual increment and needle colour; introduced species / to be preserved and protected	To be <b>RETAINED</b>	2.6
26	Manitoba maple (Acer negundo)	15 avg.	Private	Very poor; mature; four-stemmed at grade; growing through c/l fence; girdled at base; naturalized species; originated from seed / to be preserved and protected	To be <b>RETAINED</b>	1.5 Avg.
27	Scots pine (Pinus sylvestris)	21.0	Private	Fair; mature; central stem with sweep at 4m; crown asymmetric towards west due to nearby Manitoba maple; fair crown density, annual increment and needle colour; introduced invasive species / to be preserved and protected	To be <b>RETAINED</b>	2.1
28	White elm (Ulmus americana)	15 avg.	Private	Poor; mature; co-dominant stems at 1.5m - likely topped in past; growing through c/l fence; native species; originated from seed / to be preserved and protected	To be <b>RETAINED</b>	1.5 Avg.
29	Scots pine (Pinus sylvestris)	24.0	Private	Fair; mature; central dominant stem to top; fair crown density, annual increment and needle colour; introduced invasive species / to be preserved and protected	To be <b>RETAINED</b>	2.4
30	Scots pine (Pinus sylvestris)	27.0	Private	Fair; mature; central stem with competing leaders at 4m; fair crown density, annual increment and needle colour; introduced invasive species / to be preserved and protected	To be <b>RETAINED</b>	2.7
31	Manitoba maple (Acer negundo)	42.0	Private	Very poor; mature; broken at 6.5m - remaining crown dying back; suppressed lateral at 2m on east; naturalized species / to be preserved and protected	To be <b>RETAINED</b>	4.2
32	Scots pine (Pinus sylvestris)	30 avg.	Neighbour	Fair; mature; grouping of seven pines - 2 dead, 2 in good condition, 3 suppressed & divergent in form; introduced invasive species; elm and buckthorn growing through c/l fence - originated from seed / to be preserved and protected	<b>REMOVE DEAD TREES AND BUCKTHORN</b>	3.0 Avg.
33	Red oak (Quercus rubra)	35 avg.	Neighbour	Good; mature; grouping of four trees; native species; two elm growing through c/l fence - originated from seed / to be preserved and protected	To be <b>RETAINED</b>	3.5 Avg.
34	Scots pine (Pinus sylvestris)	28.0	Neighbour	Fair; mature; upright form; fair crown density, annual increment and needle colour; introduced invasive species / to be preserved and protected	To be <b>RETAINED</b>	2.8
35	Manitoba maple (Acer negundo)	-	Private	Dead	<b>REMOVE</b>	-
36	Colorado spruce (Picea pungens)	28.0	Neighbour	Fair; mature; crown completely asymmetric towards north due to previous nearby spruce which failed recently; fair crown density, annual increment and needle colour; introduced species / to be preserved and protected	<b>REMOVE</b>	2.8
37	Colorado spruce (Picea pungens)	29.0	Neighbour	Good; mature; upright form with generally symmetric crown; fair crown density, annual increment and needle colour; introduced species / to be preserved and protected	<b>REMOVE</b>	2.9
38	Colorado spruce (Picea pungens)	19.0	Neighbour	Very poor; mature; in advanced decline - poor crown density, annual increment and needle colour; introduced species / to be preserved and protected	<b>REMOVE</b>	1.9
39	Honey-locust (Gleditsia triacanthos)	10.0	Private	Fair; immature; suffering from growing stress due to very limited available rooting area; introduced species to Eastern Ontario / to be preserved and protected	To be <b>RETAINED</b>	1.0
40	Honey-locust (Gleditsia triacanthos)	10.0	Private	Fair; immature; suffering from growing stress due to very limited available rooting area; introduced species to Eastern Ontario / to be preserved and protected	To be <b>RETAINED</b>	1.0
41	Honey-locust (Gleditsia triacanthos)	10.0	Private	Fair; immature; suffering from growing stress due to very limited available rooting area; introduced species to Eastern Ontario / to be preserved and protected	To be <b>RETAINED</b>	1.0
42	Honey-locust (Gleditsia triacanthos)	10.0	Private	Fair; immature; suffering from growing stress due to very limited available rooting area; introduced species to Eastern Ontario / to be preserved and protected	To be <b>RETAINED</b>	1.0

<sup>1</sup> DIAMETER AT BREAST HEIGHT, OR 1.4m FROM GRADE (UNLESS OTHERWISE NOTED), AVERAGE DIAMETERS INDICATE INDIVIDUAL MULTI-STEMMED TREES OR AVERAGE DIAMETERS WITHIN TREE GROUPINGS;  
<sup>2</sup> AS DETERMINED FROM TOPOGRAPHIC SURVEY PREPARED BY ANNIS, O'SULLIVAN, VOLLEBEKK LTD. IN MAY 2023;  
<sup>3</sup> ALL TREES PLANTED UNLESS OTHERWISE INDICATED;  
<sup>4</sup> TO BE RETAINED OR REMOVED  
<sup>5</sup> CRZ: INDICATES RADIUS OF CRITICAL ROOTING ZONE AND IS ESTABLISHED AS BEING 10 CENTIMETERS FROM THE TRUNK OF A TREE FOR EVERY 1 CENTIMETER OF TRUNK DIAMETER AT BREAST HEIGHT (DBH). THE CRZ IS CALCULATED AS DBH x 10cm

REFER TO RECOMMENDATIONS IN REPORT PREPARED BY IFS Associates FOR TECHNIQUES TO PRESERVE TREES.

Copyright Reserved  
 The Copyrights to all designs and drawings are the property of Fotenn Consultants Inc. Unauthorized reproduction or use is forbidden. DO NOT SCALE DRAWING

Copyright réservés  
 Les droits d'auteur à tous les modèles et dessins sont la propriété de Fotenn Consultants Inc. Reproduction ou utilisation non autorisée est interdite. NE PAS L'ÉCHELLE DE DESSIN

Client / Client

**Morguard**

key plan / plan repère

legend / légende

rev'n	description / la description	yyyy/mm/dd
09	Issue for submission	2026/05/05
08	Issue for submission	2026/04/02
07	Issue for coordination	2026/03/31
06	Issue for coordination	2026/03/27
05	Issue for submission	2026/01/16
04	Issue for coordination	2026/01/07
03	Issue for coordination	2025/12/19

**FOTENN Planning + Design**  
 420 O'Connor Street  
 Ottawa, ON, CANADA K2P 1W4  
 613.730.5709  
 fotenn.com

north / le nord

stamp / le cachet

project / projet

**500 COVENTRY ROAD**  
 (LOT 1, REGISTERED PLAN 747, CITY OF OTTAWA)

drawing / dessin

**TREE PROTECTION DETAILS**

designed / conçu: **DF / SP**  
 drawn / dessiné: **SP / DF**  
 reviewed / examiné: **ST / DF**

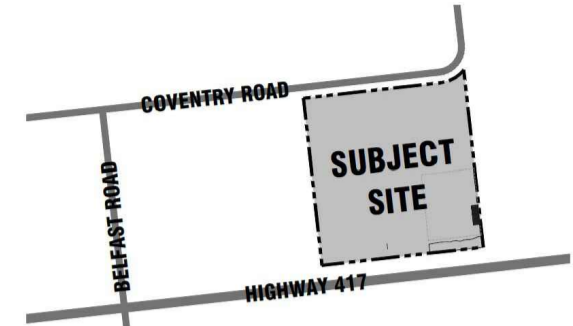
date: **Dec 2023**  
 project number / No. du projet

drawing number / No. du dessin

**TCR3**

File #007-12-24-0151 | Plan #10272

PLOT INFORMATION: DWG NAME: P:\PROJECTS\Morguard\500 Coventry\LANDSCAPE\01 Drawings\500 Coventry\TREE TCR3.dwg PLOTTED BY: Sydney Turcotte LAST SAVED BY: sturcotte  
 PLOT DATE: 2026-10-04 10:25 AM SHEET SIZE: 30 full sheet A1 (841.0x 1190.0) MM PLOTTED BY: Sydney Turcotte LAST SAVED BY: sturcotte



- APPROXIMATE SCOPE OF WORK
- EXISTING TREES AND HEDGEROW TREE-LINE AS SURVEYED - REFER TREE CONSERVATION PLANS FOR SPECIES AND HEALTH ASSESSMENTS
- EXISTING TREES NOT PICKED UP IN SURVEY
- CRITICAL ROOTING ZONE (CRZ) IDENTIFIED - REFER TO TABLE # FOR RADIUS OF CRZ
- TREE PROTECTION FENCING - REFER 1-TC2
- DECIDUOUS TREES (SEE PLANTING NOTES & SCHEDULE FOR SPECIES AND QUANTITIES)
- PROJECTED CANOPY COVERAGE IN GREEN
- CONIFEROUS TREES (SEE PLANTING SCHEDULE FOR SPECIES AND QUANTITIES)
- PERENNIAL & SHRUB PLANTING BEDS IN RAISED CONCRETE CURB (SEE PLANTING NOTES & SCHEDULE FOR SPECIES AND QUANTITIES)
- PLANT KEY
- CONCRETE UNIT PAVERS - REFER SPECIFICATIONS
- SITE FURNISHINGS BY OWNER - REFER SPECIFICATIONS
- NATURALIZED / REFORESTATION AREA (REFER TO SPECIFICATIONS AND PLANTING SCHEDULE FOR SPECIES AND QUANTITIES)

09	Issue for submission	2026/05/05
08	Issue for submission	2026/04/02
07	Issue for coordination	2026/03/31
06	Issue for coordination	2026/03/27
05	Issue for submission	2026/01/16
04	Issue for coordination	2026/01/07
03	Issue for coordination	2025/12/19
rev'n	description / la description	yyyy/mm/dd

**FOTENN Planning + Design**  
420 O'Connor Street Ottawa, ON, CANADA K2P 1W4 613.730.5709 fotenn.com

north / le nord stamp / le cachet

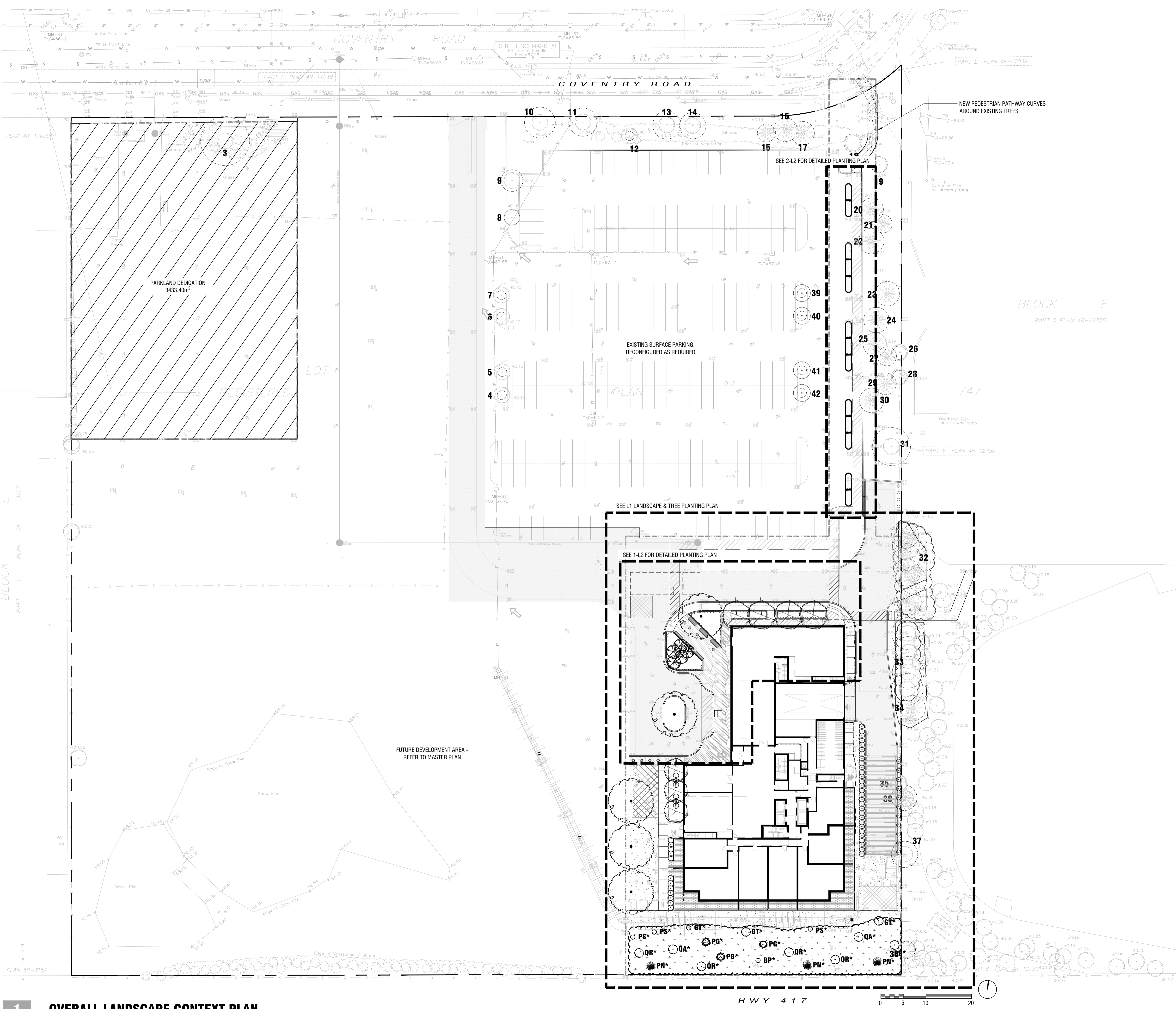
project / projet  
**500 COVENTRY ROAD**  
(LOT 1, REGISTERED PLAN 747, CITY OF OTTAWA)

drawing / dessin  
**OVERALL LANDSCAPE CONTEXT PLAN**

designed / conçu <b>DF / SP</b>	drawn / dessiné <b>SP / DF</b>	reviewed / examiné <b>ST / DF</b>
date <b>Dec 2023</b>		
drawing number / No. du projet		

drawing number / No. du dessin

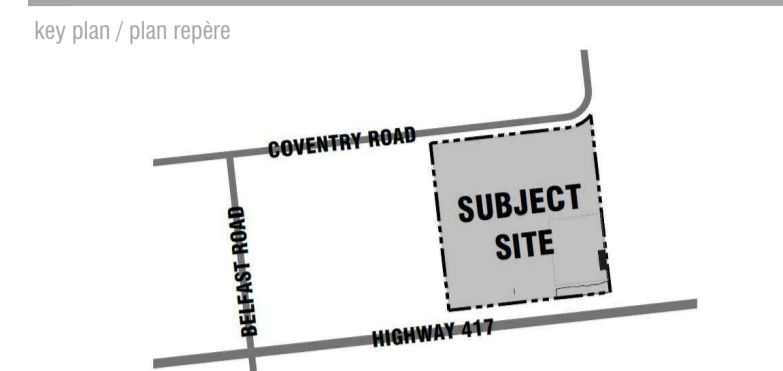
**LO**



**1 OVERALL LANDSCAPE CONTEXT PLAN**  
**LO 1:400**

PLOT INFORMATION: DWG NAME: P:\PROJECTS\Morguard\500 Coventry\LANDSCAPE\01 Drawings\500 Coventry STREET LandscapePlan.dwg PLOT DATE: 2026-10-04 08:07 PM SHEET SIZE: 8.5 x 11 inches AT 1/4"=1'-0" (1:400) PLOTTED BY: Sydney Trudelle LAST SAVED BY: s.trudelle

File #007-12-24-0151 | Plan #18272




Legend / légende

- APPROXIMATE SCOPE OF WORK
- EXISTING TREES AND HEDGEROW TREE-LINE AS SURVEYED - REFER TREE CONSERVATION PLANS FOR SPECIES AND HEALTH ASSESSMENTS
- EXISTING TREES NOT PICKED UP IN SURVEY
- CRITICAL ROOTING ZONE (CRZ) IDENTIFIED - REFER TO TABLE # FOR RADIUS OF CRZ
- TREE PROTECTION FENCING - REFER 1-TC2
- DECIDUOUS TREES (SEE PLANTING NOTES & SCHEDULE FOR SPECIES AND QUANTITIES)
- PROJECTED CANOPY COVERAGE IN GREEN
- CONIFEROUS TREES (SEE PLANTING SCHEDULE FOR SPECIES AND QUANTITIES)
- PERENNIAL & SHRUB PLANTING BEDS IN RAISED CONCRETE CURB (SEE PLANTING NOTES & SCHEDULE FOR SPECIES AND QUANTITIES)
- PLANT KEY
- CONCRETE UNIT PAVERS - REFER SPECIFICATIONS
- SITE FURNISHINGS BY OWNER - REFER SPECIFICATIONS
- NATURALIZED / REFORESTATION AREA (REFER TO SPECIFICATIONS AND PLANTING SCHEDULE FOR SPECIES AND QUANTITIES)

09	Issue for submission	2026/05/05
08	Issue for submission	2026/04/02
07	Issue for coordination	2026/03/31
06	Issue for coordination	2026/03/27
05	Issue for submission	2026/01/16
04	Issue for coordination	2026/01/07
03	Issue for coordination	2025/12/19

**FOTENN + Design**  
 420 O'Connor Street  
 Ottawa, ON, CANADA K2P 1W4  
 613.730.5709  
 fotenn.com

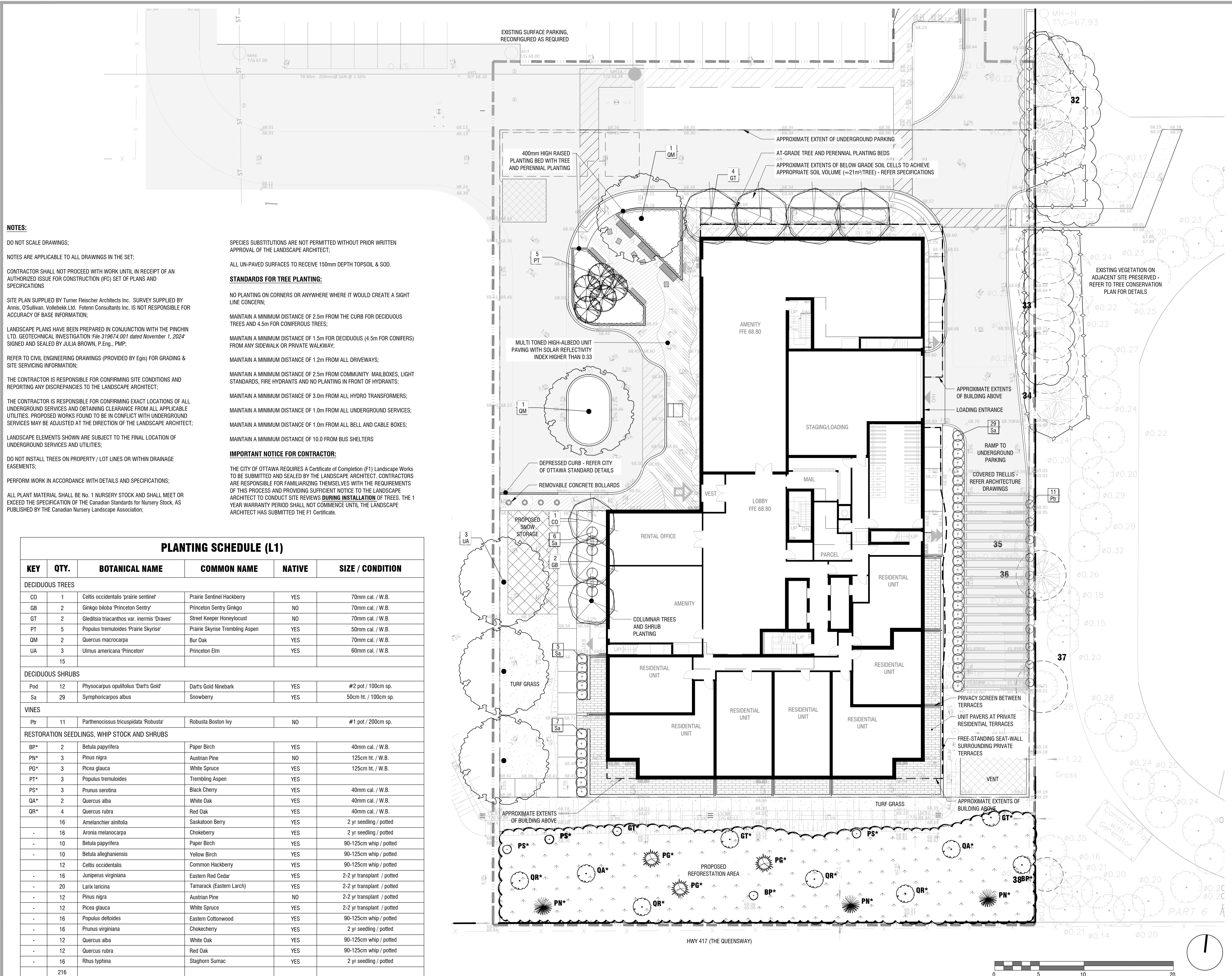
north / le nord stamp / le cachet  


project / projet  
**500 COVENTRY ROAD**  
 (LOT 1, REGISTERED PLAN 747, CITY OF OTTAWA)

drawing / dessin  
**LANDSCAPE & TREE PLANTING PLAN**

designed / conçu **DF / SP** drawn / dessiné **SP / DF** reviewed / examiné **ST / DF**  
 date **Dec 2023** project number / No. du projet

drawing number / No. du dessin  
**L1**



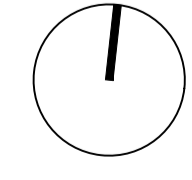
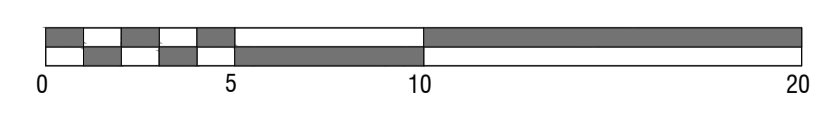
**NOTES:**  
 DO NOT SCALE DRAWINGS;  
 NOTES ARE APPLICABLE TO ALL DRAWINGS IN THE SET;  
 CONTRACTOR SHALL NOT PROCEED WITH WORK UNTIL IN RECEIPT OF AN AUTHORIZED ISSUE FOR CONSTRUCTION (IFC) SET OF PLANS AND SPECIFICATIONS  
 SITE PLAN SUPPLIED BY Turner Fleischer Architects Inc. SURVEY SUPPLIED BY Annis, O'Sullivan, Vollebakk Ltd. Fotenn Consultants Inc. IS NOT RESPONSIBLE FOR ACCURACY OF BASE INFORMATION;  
 LANDSCAPE PLANS HAVE BEEN PREPARED IN CONJUNCTION WITH THE PINCHIN LTD. GEOTECHNICAL INVESTIGATION File 319674.001 dated November 1, 2024 SIGNED AND SEALED BY JULIA BROWN, P.Eng., PMP;  
 REFER TO CIVIL ENGINEERING DRAWINGS (PROVIDED BY Egis) FOR GRADING & SITE SERVICING INFORMATION;  
 THE CONTRACTOR IS RESPONSIBLE FOR CONFIRMING SITE CONDITIONS AND REPORTING ANY DISCREPANCIES TO THE LANDSCAPE ARCHITECT;  
 THE CONTRACTOR IS RESPONSIBLE FOR CONFIRMING EXACT LOCATIONS OF ALL UNDERGROUND SERVICES AND OBTAINING CLEARANCE FROM ALL APPLICABLE UTILITIES. PROPOSED WORKS FOUND TO BE IN CONFLICT WITH UNDERGROUND SERVICES MAY BE ADJUSTED AT THE DIRECTION OF THE LANDSCAPE ARCHITECT;  
 LANDSCAPE ELEMENTS SHOWN ARE SUBJECT TO THE FINAL LOCATION OF UNDERGROUND SERVICES AND UTILITIES;  
 DO NOT INSTALL TREES ON PROPERTY / LOT LINES OR WITHIN DRAINAGE EASEMENTS;  
 PERFORM WORK IN ACCORDANCE WITH DETAILS AND SPECIFICATIONS;  
 ALL PLANT MATERIAL SHALL BE No. 1 NURSERY STOCK AND SHALL MEET OR EXCEED THE SPECIFICATION OF THE Canadian Standards for Nursery Stock, AS PUBLISHED BY THE Canadian Nursery Landscape Association;

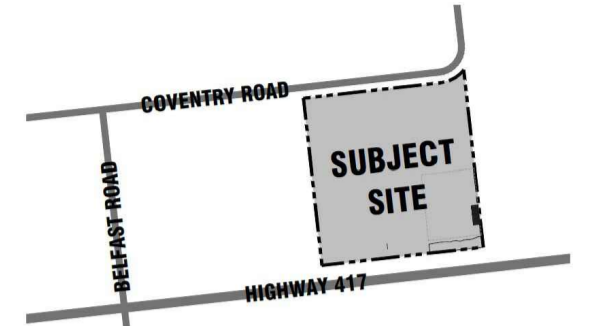
SPECIES SUBSTITUTIONS ARE NOT PERMITTED WITHOUT PRIOR WRITTEN APPROVAL OF THE LANDSCAPE ARCHITECT;  
 ALL UN-PAVED SURFACES TO RECEIVE 150mm DEPTH TOPSOIL & SOD.  
**STANDARDS FOR TREE PLANTING:**  
 NO PLANTING ON CORNERS OR ANYWHERE WHERE IT WOULD CREATE A SIGHT LINE CONCERN;  
 MAINTAIN A MINIMUM DISTANCE OF 2.5m FROM THE CURB FOR DECIDUOUS TREES AND 4.5m FOR CONIFEROUS TREES;  
 MAINTAIN A MINIMUM DISTANCE OF 1.5m FOR DECIDUOUS (4.5m FOR CONIFERS) FROM ANY SIDEWALK OR PRIVATE WALKWAY;  
 MAINTAIN A MINIMUM DISTANCE OF 1.2m FROM ALL DRIVEWAYS;  
 MAINTAIN A MINIMUM DISTANCE OF 2.5m FROM COMMUNITY MAILBOXES, LIGHT STANDARDS, FIRE HYDRANTS AND NO PLANTING IN FRONT OF HYDRANTS;  
 MAINTAIN A MINIMUM DISTANCE OF 3.0m FROM ALL HYDRO TRANSFORMERS;  
 MAINTAIN A MINIMUM DISTANCE OF 1.0m FROM ALL UNDERGROUND SERVICES;  
 MAINTAIN A MINIMUM DISTANCE OF 1.0m FROM ALL BELL AND CABLE BOXES;  
 MAINTAIN A MINIMUM DISTANCE OF 10.0 FROM BUS SHELTERS  
**IMPORTANT NOTICE FOR CONTRACTOR:**  
 THE CITY OF OTTAWA REQUIRES A Certificate of Completion (F1) Landscape Works TO BE SUBMITTED AND SEALED BY THE LANDSCAPE ARCHITECT. CONTRACTORS ARE RESPONSIBLE FOR FAMILIARIZING THEMSELVES WITH THE REQUIREMENTS OF THIS PROCESS AND PROVIDING SUFFICIENT NOTICE TO THE LANDSCAPE ARCHITECT TO CONDUCT SITE REVIEWS **DURING INSTALLATION** OF TREES. THE 1 YEAR WARRANTY PERIOD SHALL NOT COMMENCE UNTIL THE LANDSCAPE ARCHITECT HAS SUBMITTED THE F1 Certificate.

PLANTING SCHEDULE (L1)					
KEY	QTY.	BOTANICAL NAME	COMMON NAME	NATIVE	SIZE / CONDITION
<b>DECIDUOUS TREES</b>					
CO	1	Celtis occidentalis 'prairie sentinel'	Prairie Sentinel Hackberry	YES	70mm cal. / W.B.
GB	2	Ginkgo biloba 'Princeton Sentry'	Princeton Sentry Ginkgo	NO	70mm cal. / W.B.
GT	2	Gleditsia triacanthos var. 'inermis 'Draves'	Street Keeper Honeylocust	NO	70mm cal. / W.B.
PT	5	Populus tremuloides 'Prairie Skyrise'	Prairie Skyrise Trembling Aspen	YES	50mm cal. / W.B.
QM	2	Quercus macrocarpa	Bur Oak	YES	70mm cal. / W.B.
UA	3	Ulmus americana 'Princeton'	Princeton Elm	YES	60mm cal. / W.B.
	15				
<b>DECIDUOUS SHRUBS</b>					
Pod	12	Physocarpus opulifolius 'Dart's Gold'	Dart's Gold Ninebark	YES	#2 pot / 100cm sp.
Sa	29	Symphoricarpos albus	Snowberry	YES	50cm ht. / 100cm sp.
<b>VINES</b>					
Ptr	11	Parthenocissus tricuspidata 'Robusta'	Robusta Boston Ivy	NO	#1 pot / 200cm sp.
<b>RESTORATION SEEDLINGS, WHIP STOCK AND SHRUBS</b>					
BP*	2	Betula papyrifera	Paper Birch	YES	40mm cal. / W.B.
PN*	3	Pinus nigra	Austrian Pine	NO	125cm ht. / W.B.
PG*	3	Picea glauca	White Spruce	YES	125cm ht. / W.B.
PT*	3	Populus tremuloides	Trembling Aspen	YES	
PS*	3	Prunus serotina	Black Cherry	YES	40mm cal. / W.B.
QA*	2	Quercus alba	White Oak	YES	40mm cal. / W.B.
QR*	4	Quercus rubra	Red Oak	YES	40mm cal. / W.B.
	16	Amelanchier alnifolia	Saskatoon Berry	YES	2 yr seedling / potted
	16	Aronia melanocarpa	Chokeberry	YES	2 yr seedling / potted
	10	Betula papyrifera	Paper Birch	YES	90-125cm whip / potted
	10	Betula alleghaniensis	Yellow Birch	YES	90-125cm whip / potted
	12	Celtis occidentalis	Common Hackberry	YES	90-125cm whip / potted
	16	Juniperus virginiana	Eastern Red Cedar	YES	2-2 yr transplant / potted
	20	Larix laricina	Tamarack (Eastern Larch)	YES	2-2 yr transplant / potted
	12	Pinus nigra	Austrian Pine	NO	2-2 yr transplant / potted
	12	Picea glauca	White Spruce	YES	2-2 yr transplant / potted
	16	Populus deltoides	Eastern Cottonwood	YES	90-125cm whip / potted
	16	Prunus virginiana	Chokecherry	YES	2 yr seedling / potted
	12	Quercus alba	White Oak	YES	90-125cm whip / potted
	12	Quercus rubra	Red Oak	YES	90-125cm whip / potted
	16	Rhus typhina	Slaghorn Sumac	YES	2 yr seedling / potted
	216				

NOTES: PLANT MATERIAL IN NATURALIZED AREA TO BE SPACED AT APPROXIMATELY 200cm O.C. RANDOM LAYOUT TO BE APPROVED BY LANDSCAPE ARCHITECT  
 ALL PLANT MATERIAL IS LOCATED ON PRIVATE PROPERTY FOR THIS PHASE OF THE PROJECT

**1 LANDSCAPE & TREE PLANTING PLAN**  
**L1 1:200**





- APPROXIMATE SCOPE OF WORK
- EXISTING TREES AND HEDGEROW TREE-LINE AS SURVEYED - REFER TREE CONSERVATION PLANS FOR SPECIES AND HEALTH ASSESSMENTS
- EXISTING TREES NOT PICKED UP IN SURVEY
- CRITICAL ROOTING ZONE (CRZ) IDENTIFIED - REFER TO TABLE # FOR RADIUS OF CRZ
- TREE PROTECTION FENCING - REFER 1-TC2

- DECIDUOUS TREES (SEE PLANTING NOTES & SCHEDULE FOR SPECIES AND QUANTITIES)
- PROJECTED CANOPY COVERAGE IN GREEN
- CONIFEROUS TREES (SEE PLANTING SCHEDULE FOR SPECIES AND QUANTITIES)
- PERENNIAL & SHRUB PLANTING BEDS IN RAISED CONCRETE CURB (SEE PLANTING NOTES & SCHEDULE FOR SPECIES AND QUANTITIES)
- PLANT KEY
- CONCRETE UNIT PAVERS - REFER SPECIFICATIONS
- SITE FURNISHINGS BY OWNER - REFER SPECIFICATIONS
- NATURALIZED / REFORESTATION AREA (REFER TO SPECIFICATIONS AND PLANTING SCHEDULE FOR SPECIES AND QUANTITIES)

09	Issue for submission	2026/05/05
08	Issue for submission	2026/04/02
07	Issue for coordination	2026/03/31
06	Issue for coordination	2026/03/27
05	Issue for submission	2026/01/16
04	Issue for coordination	2026/01/07
03	Issue for coordination	2025/12/19

**FOTENN Planning + Design**  
420 O'Connor Street  
Ottawa, ON, CANADA K2P 1W4  
613.730.5709  
fotenn.com

north / le nord stamp / le cachet

project / projet  
**500 COVENTRY ROAD**  
(LOT 1, REGISTERED PLAN 747, CITY OF OTTAWA)

drawing / dessin  
**LANDSCAPE & TREE PLANTING PLAN**

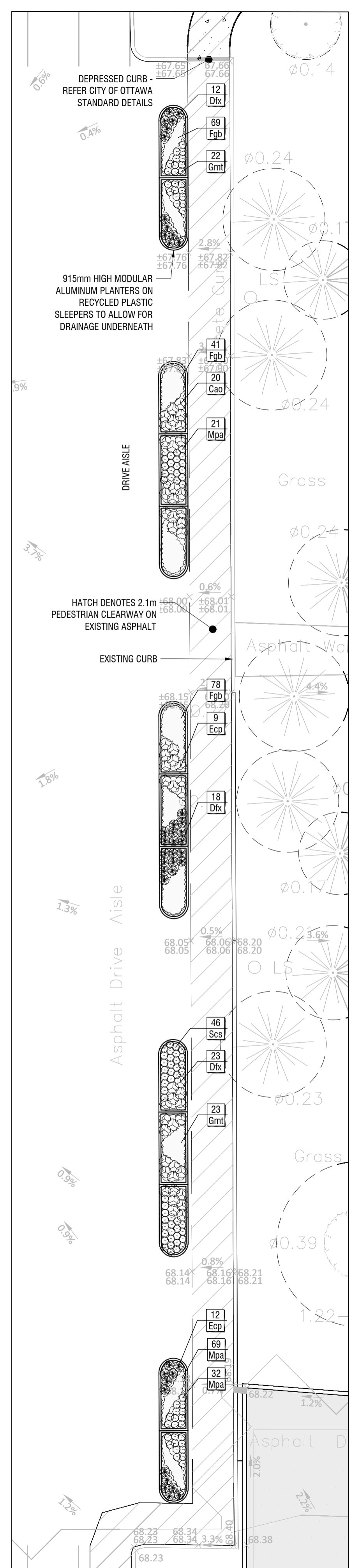
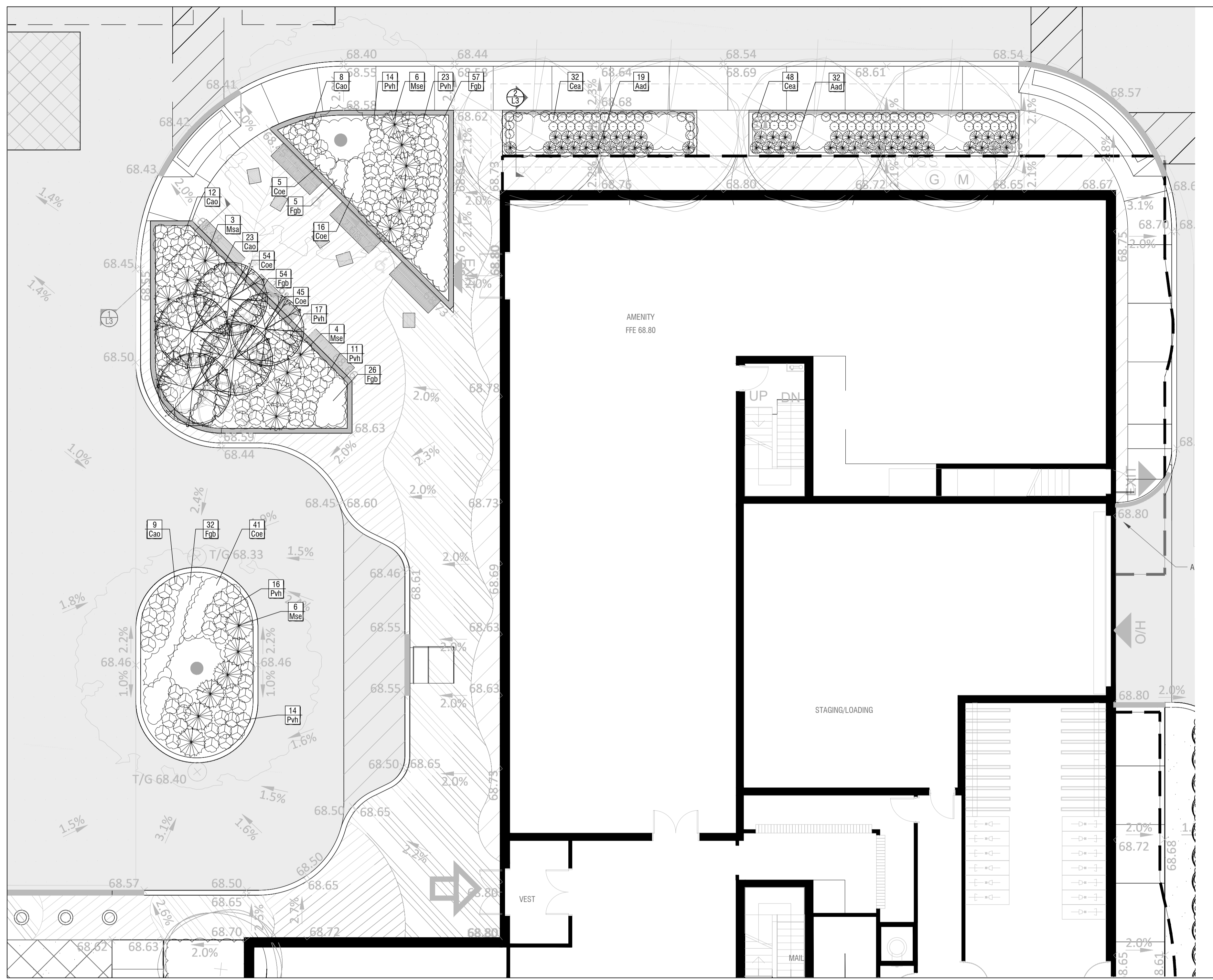
designed / conçu  
**DF / SP**  
date  
**Dec 2023**

drawn / dessiné  
**SP / DF**  
project number / No. du projet

reviewed / examiné  
**ST / DF**

drawing number / No. du dessin

**L2**



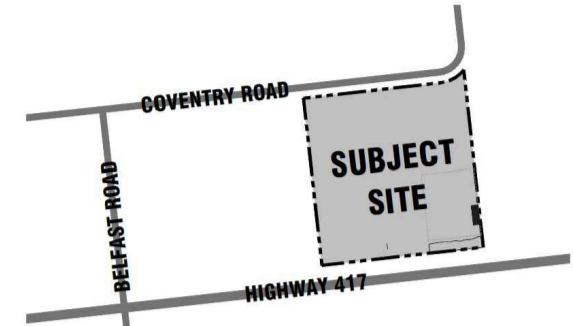
**1 PLANTING PLAN**  
**L2 1:100**

PLANTING SCHEDULE (1-L2)				
KEY	QTY.	BOTANICAL NAME	COMMON NAME	SIZE / CONDITION / SPACING
PERENNIALS & GRASSES				
Aad	51	Astilbe x arendsi 'Diamond' (Diamond)	Diamond Astilbe	#1 Pot / 50cm o.c.
Cao	52	Calamagrostis acutiflora 'Overdam'	Variegated Reed Grass	#2 Pot / 60cm o.c.
Cea	80	Carex elata 'Aurea'	Bowles Golden Sedge	#1 Pot / 30cm o.c.
Coe	161	Carex oshimensis 'Evergold'	Striped Weeping Sedge	#1 Pot / 30cm o.c.
Fgb	174	Festuca glauca 'Boulder Blue'	Elijah Blue Fescue	#1 Pot / 30cm o.c.
Msa	3	Miscanthus sinensis 'Autumn Light'	Autumn Light Maiden Grass	#2 Pot / 120cm o.c.
Mse	16	Miscanthus sinensis 'Encore'	Encore Maiden Grass	#2 Pot / 120cm o.c.
Pvh	81	Panicum virgatum 'Heavy Metal'	Blue Switch Grass	#2 Pot / 70cm sp.

PLANTING SCHEDULE (2-L2)				
KEY	QTY.	BOTANICAL NAME	COMMON NAME	SIZE / CONDITION / SPACING
PERENNIALS & GRASSES				
Cao	20	Calamagrostis acutiflora 'Overdam'	Variegated Reed Grass	#2 Pot / 60cm o.c.
Dtx	53	Deschampsia flexuosa	Crinkled Hair Grass	#1 Pot / 50cm o.c.
Ecp	21	Echinacea purpurea	Coneflower	#1 Pot / 50cm o.c.
Fgb	188	Festuca glauca 'Boulder Blue'	Elijah Blue Fescue	#1 Pot / 30cm o.c.
Gmt	45	Geum triflorum	Grandpa's Whiskers	#1 Pot / 30cm o.c.
Mpa	90	Monarda punctata	Spotted Bee Balm	#1 Pot / 20cm o.c.
Scs	46	Schizachyrium scoparium	Little Bluestem	#1 Pot / 50cm o.c.

**2 RAISED PLANTERS PLAN**  
**L2 1:150**





APPROXIMATE SCOPE OF WORK

EXISTING TREES AND HEDGEROW TREE-LINE AS SURVEYED - REFER TREE CONSERVATION PLANS FOR SPECIES AND HEALTH ASSESSMENTS

EXISTING TREES NOT PICKED UP IN SURVEY

CRITICAL ROOTING ZONE (CRZ) IDENTIFIED - REFER TO TABLE # FOR RADIUS OF CRZ

APPROXIMATE CANOPY AT 40 YEARS

PROPOSED TREE

EXTENT OF GROWING MEDIUM - REFER TO CALLOUTS FOR DEPTH

09	Issue for submission	2026/05/05
08	Issue for submission	2026/04/02
07	Issue for coordination	2026/03/31
06	Issue for coordination	2026/03/27
05	Issue for submission	2026/01/16
04	Issue for coordination	2026/01/07
03	Issue for coordination	2025/12/19
rev'n	description / la description	yyyy/mm/dd

**FOTENN Planning + Design**  
420 O'Connor Street  
Ottawa, ON, CANADA K2P 1W4  
613.730.5709  
fotenn.com

north / le nord

stamp / le cachet

project / projet  
**500 COVENTRY ROAD**  
(LOT 1, REGISTERED PLAN 747, CITY OF OTTAWA)

drawing / dessin  
**40 YEAR CANOPY COVERAGE PROJECTIONS & SOIL VOLUME**

designed / conçu <b>DF / SP</b>	drawn / dessiné <b>SP / DF</b>	reviewed / examiné <b>ST / DF</b>
date <b>Dec 2023</b>		
project number / No. du projet		

drawing number / No. du dessin

**L4**

**PROPOSED TREE CANOPY PROJECTIONS (40 YEAR) & SOIL VOLUME REQUIREMENTS**

CANOPY PROJECTIONS (NTS)	AVERAGE CROWN AREA PER TREE (m <sup>2</sup> )	QTY OF TREES	TOTAL TREE CANOPY COVERAGES	SOIL VOLUME REQUIREMENT*	CONTINUOUS SPACE SOIL VOLUME (i.e. 2 TREES/1 GREENSPACE)
DWARF ORNAMENTAL DECIDUOUS TREE (AVG. CANOPY DIAMETER = 2.5m)	9m <sup>2</sup>	0	0m <sup>2</sup>	10m <sup>3</sup>	8m <sup>3</sup> /tree
COLUMNAR DECIDUOUS TREE (AVG. CANOPY DIAMETER = 3.5m)	10m <sup>2</sup>	5	50m <sup>2</sup>	15m <sup>3</sup>	9m <sup>3</sup> /tree
SMALL DECIDUOUS TREE (AVG. CANOPY DIAMETER = 4.5m)	16m <sup>2</sup>	5	80m <sup>2</sup>	20m <sup>3</sup>	12m <sup>3</sup> /tree
MEDIUM DECIDUOUS TREE (AVG. CANOPY DIAMETER = 8.5m)	57m <sup>2</sup>	8	456m <sup>2</sup>	25m <sup>3</sup>	15m <sup>3</sup> /tree
LARGE DECIDUOUS TREE (AVG. CANOPY DIAMETER = 16m)	201m <sup>2</sup>	13	2,613m <sup>2</sup>	30m <sup>3</sup>	18m <sup>3</sup> /tree
LARGE CONIFEROUS TREE (AVG. CANOPY DIAMETER = 6m)	6.5m <sup>2</sup>	3	19.5m <sup>2</sup>	25m <sup>3</sup>	30m <sup>3</sup>

**CANOPY CALCULATIONS**

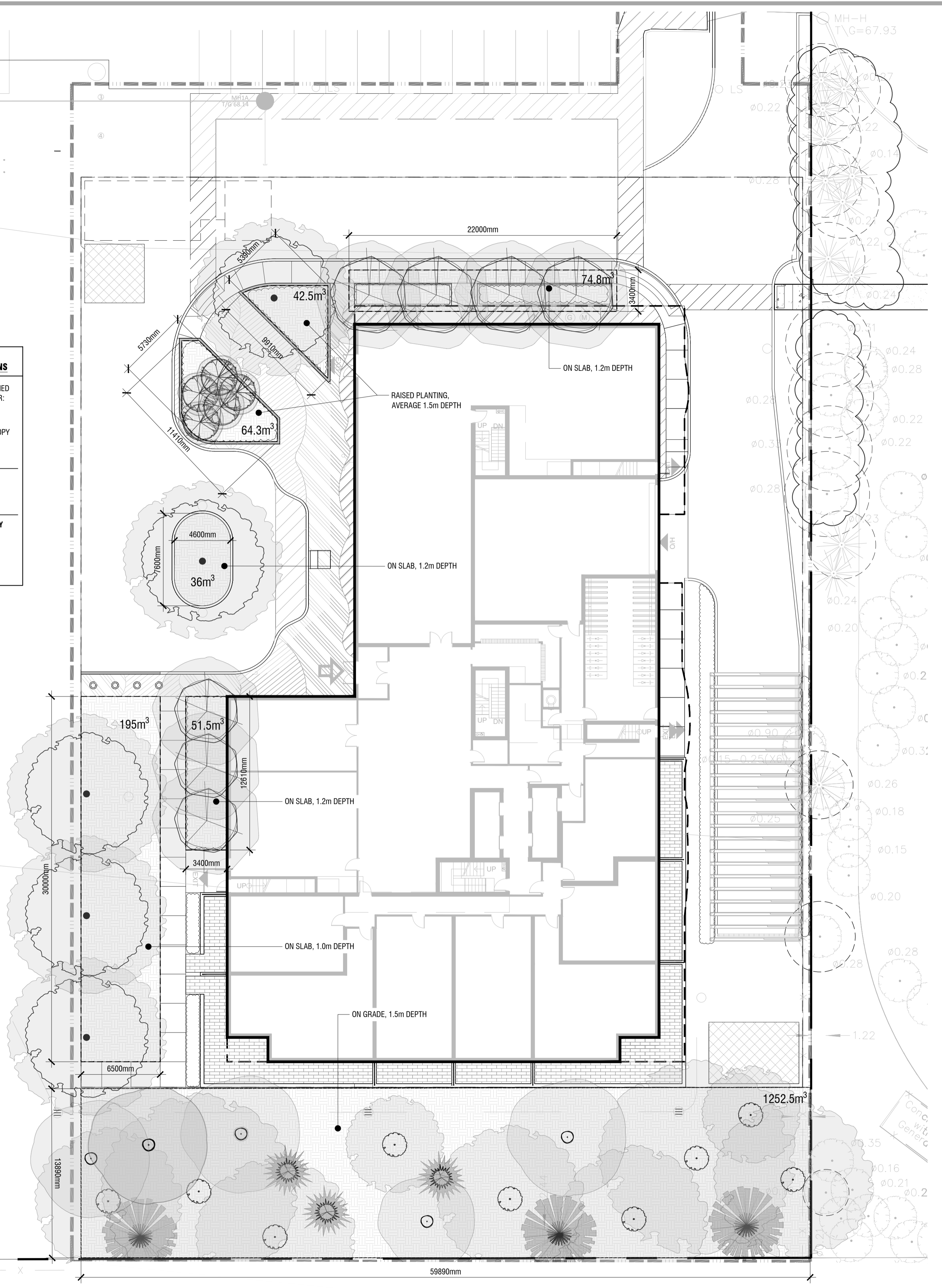
EXISTING RETAINED CANOPY COVER: 0m<sup>2</sup>

PROPOSED CANOPY COVER: 3219m<sup>2</sup>

SITE SIZE: 4430m<sup>2</sup>

**TOTAL CANOPY COVERAGE 73%**

- NOTES:**
- CALCULATIONS HAVE BEEN MADE TO PROJECT A 40 YEAR HORIZON AND TYPICAL GROWTH RATES FOR ALL TREES
  - PROJECTED CANOPY DIAMETERS AND AREAS ARE BASED ON AN AVERAGE OF THE TREES PROPOSED FOR THE SITE
  - PROJECTED CANOPY AREAS FOR EXISTING TREES ARE BASED ON AVERAGE OF THE TREES PLANTED AS PART OF PREVIOUS PHASES
  - OVERLAPPING CANOPIES AREAS FOR EXISTING TREES ARE ONLY COUNTED ONCE WHERE APPLICABLE
  - CANOPY CALCULATION DOES NOT ACCOUNT FOR EXISTING TREE CANOPY ON ADJACENT SITES/IN ROW OVERLAPPING SITE
  - \*SOIL VOLUME REQUIREMENT IS BASED ON THE CITY OF OTTAWA'S 'Tree Planting in Sensitive Marine Clay Soils - 2017 Guidelines' DRAFT Version 2.0 DATED JANUARY 11, 2019 WHICH CALCULATES SOIL VOLUME USING A DEPTH OF 1.5m, OR AS NOTED OTHERWISE WHERE THIS DEPTH IS NOT ACHIEVABLE.



**1 40 YEAR PROJECTED CANOPY COVERAGE & SOIL VOLUME PLAN**  
**L4 1:200**