

Q4 ARCHITECTS INC.

4110 Yonge Street
Suite 602, Toronto ON
M2P 2B7

T. 416.322.6334
F. 416.322.7294
E. info@q4architects.com



The contractor / builder must verify all dimensions on the job and report any discrepancy to the designer before proceeding with the work. Drawings are NOT to be scaled. All drawings and specifications are instruments of service and the copyright property of the designer and must be returned upon request.

Q4 Architects Inc. retains the copyright in all drawings, plans, sketches, and all digital information. They may not be copied or used for any other projects or purposes or distributed without the written consent of Q4 Architects Inc.

NOTES:

Block elevations are to vary between blocks with the two provided options, Option 1 and Option 2.

Blocks 1, 12 and 13, which front a public ROW, will have Typical front elevations, with Upgraded rear elevations varying between Option 1 and Option 2.

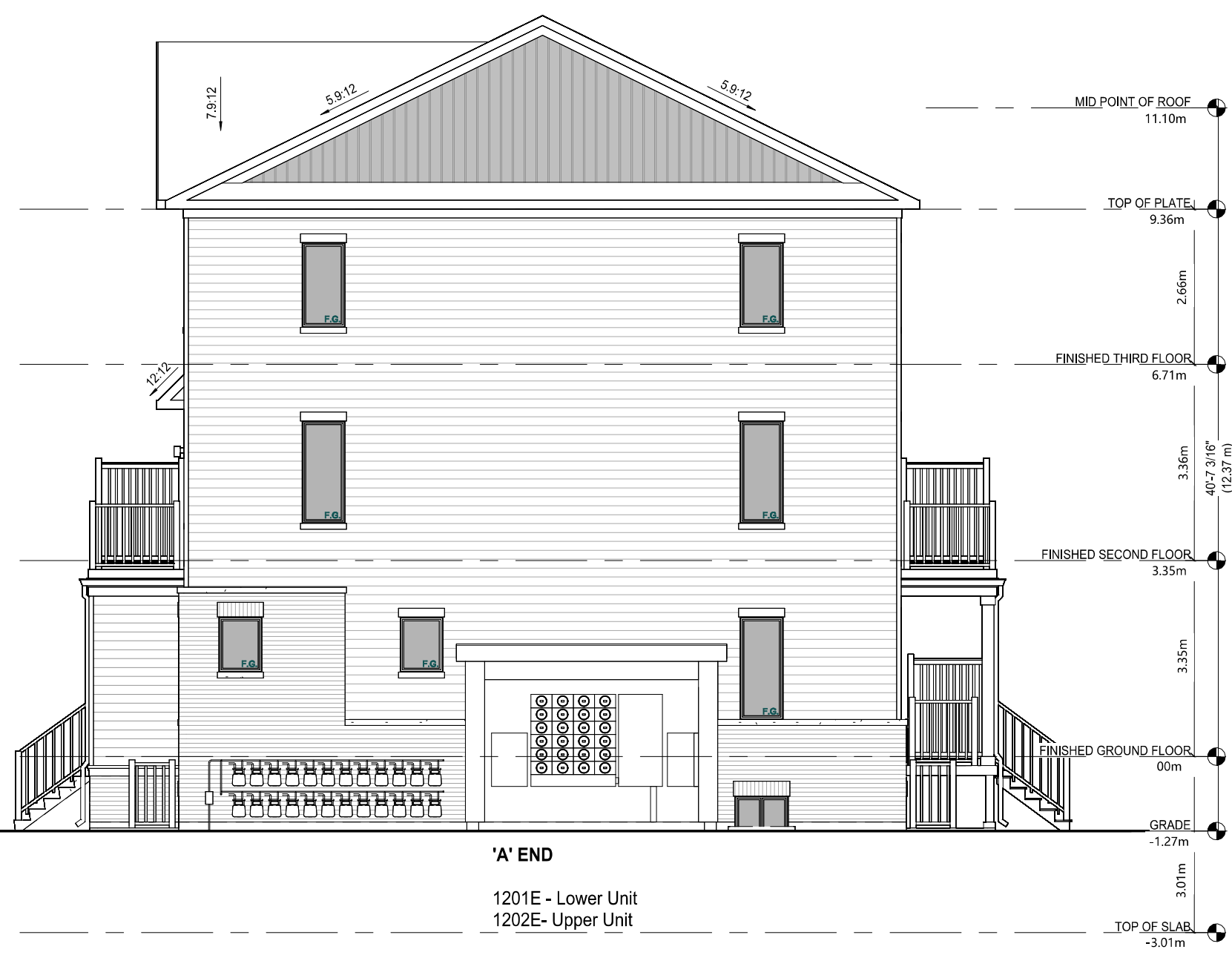
Blocks 9 and 10, which back onto Flewellyn Road, will have Typical front elevations, with Upgraded rear elevations varying between Option 1 and Option 2.

Block 11, which backs onto a public ROW, will use the no rear deck stairs style, elevations shown on sheet A-7.

Elevation style to vary between blocks.



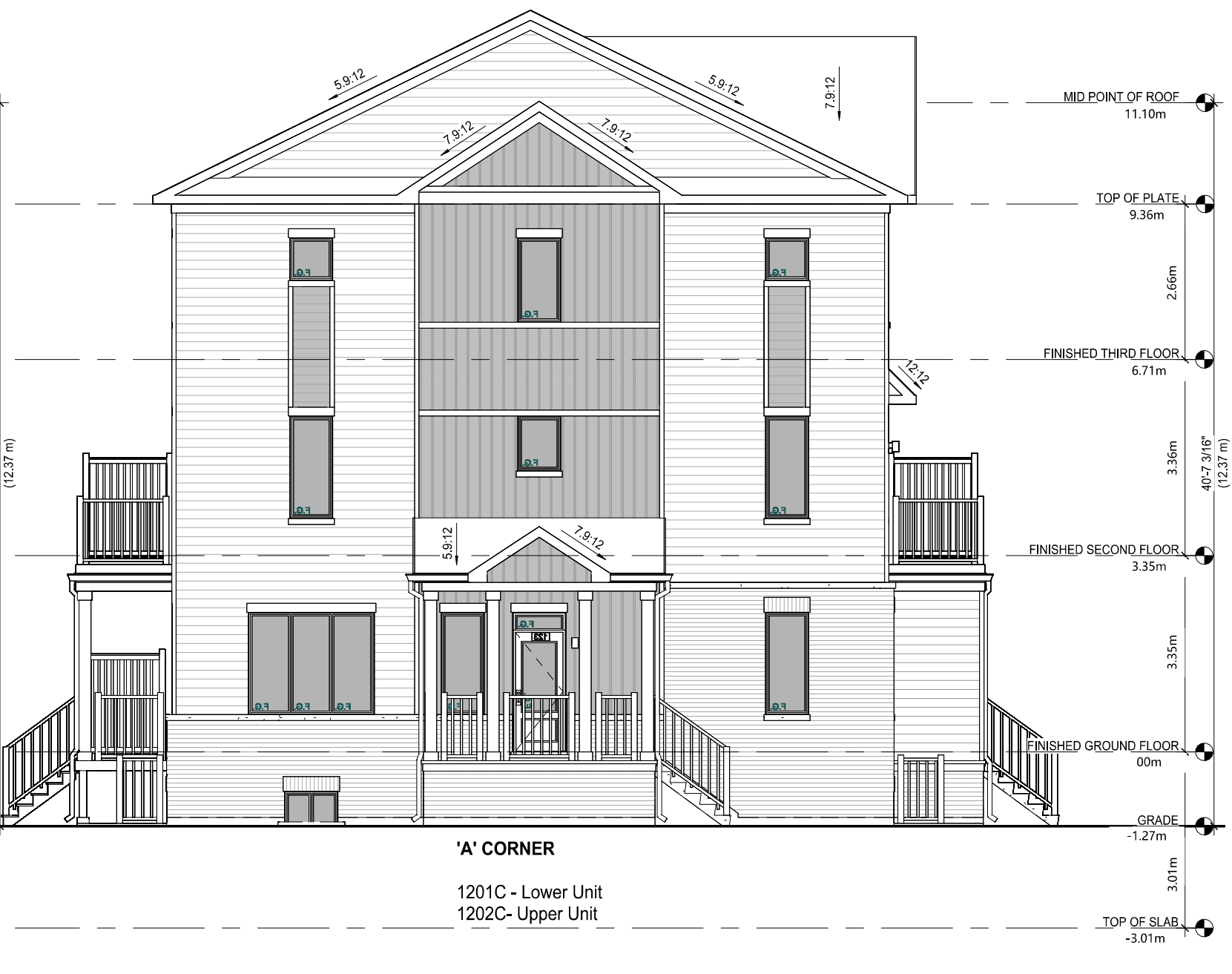
1 24 UNIT BLOCK - FRONT ELEVATION - OPTION 1 (CORNER UPGRADE)
1:96



4 24 UNIT BLOCK - RIGHT ELEVATION - OPTION 1
1:96



2 24 UNIT BLOCK - REAR ELEVATION - OPTION 1 (CORNER UPGRADE)
1:96



3 24 UNIT BLOCK - LEFT ELEVATION - OPTION 1C
1:96

1 ISSUED FOR SPA 2026.04.27 JHM
Issued / Revision Chart

**OAST Stacked Towns
CONSERVANCY PH6**

Ottawa, ON

CAIVAN

Project No. 25033
Scale 1:96
Drawn By JM
Checked By CT

ELEVATIONS

C:\Users\awastin\Documents\OAST Stacked Towns\Block_24 Units\wastin\FW2\A1.rvt 2024-09-06 09:25:58

Q4 ARCHITECTS INC.

4110 Yonge Street
Suite 602, Toronto ON
M2P 2B7

T. 416.322.6334
F. 416.322.7294
E. info@q4architects.com



The contractor / builder must verify all dimensions on the job and report any discrepancy to the designer before proceeding with the work. Drawings are NOT to be scaled. All drawings and specifications are instruments of service and the copyright property of the designer and must be returned upon request.

Q4 Architects Inc. retains the copyright in all drawings, plans, sketches, and all digital information. They may not be copied or used for any other projects or purposes or distributed without the written consent of Q4 Architects Inc.

NOTES:

Block elevations are to vary between blocks with the two provided options, Option 1 and Option 2.

Blocks 1, 12 and 13, which front a public ROW, will have Typical front elevations, with Upgraded rear elevations varying between Option 1 and Option 2.

Blocks 9 and 10, which back onto Flewellyn Road, will have Typical front elevations, with Upgraded rear elevations varying between Option 1 and Option 2.

Block 11, which backs onto a public ROW, will use the no rear deck stairs style, elevations shown on sheet A-7.

Elevation style to vary between blocks.



③ 24 UNIT BLOCK - UPGRADE RIGHT ELEVATION
1:96

① 24 UNIT BLOCK - UPGRADE REAR ELEVATION OPTION 1 (CORNER UPGRADE)
1:96

| ISSUED FOR SPA | 2026.04.27 | JM |
|----------------|------------|-------|
| Issued / | Revision | Chart |

**OAST Stacked Towns
CONSERVANCY PH6**

Ottawa, ON

CAIVAN

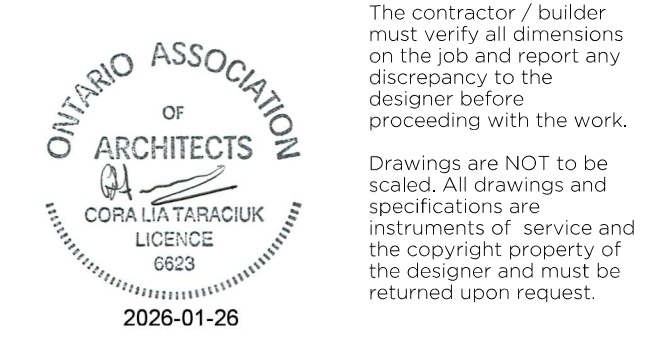
| | |
|-------------|-------|
| Project No. | 25033 |
| Scale | 1:96 |
| Drawn By | JM |
| Checked By | CT |

ELEVATIONS

Q4 ARCHITECTS INC.

4110 Yonge Street
Suite 602, Toronto ON
M2P 2B7

T: 416.322.6334
F: 416.322.7294
E: info@q4architects.com



The contractor / builder must verify all dimensions on the job and report any discrepancy to the designer before proceeding with the work. Drawings are NOT to be scaled. All drawings and specifications are instruments of service and the copyright property of the designer and must be returned upon request.

Q4 Architects Inc. retains the copyright in all drawings, plans, sketches, and all digital information. They may not be copied or used for any other projects or purposes or distributed without the written consent of Q4 Architects Inc.

NOTES:

Block elevations are to vary between blocks with the two provided options, Option 1 and Option 2.

Blocks 1, 12 and 13, which front a public ROW, will have Typical front elevations, with Upgraded rear elevations varying between Option 1 and Option 2.

Blocks 9 and 10, which back onto Flewellyn Road, will have Typical front elevations, with Upgraded rear elevations varying between Option 1 and Option 2.

Block 11, which backs onto a public ROW, will use the no rear deck stairs style, elevations shown on sheet A-7.

Elevation style to vary between blocks.



1 24 UNIT BLOCK - FRONT ELEVATION - OPTION 2 (CORNER UPGRADE)
1:96



4 24 UNIT BLOCK - RIGHT ELEVATION
1:96



2 24 UNIT BLOCK - REAR ELEVATION - OPTION 2 (CORNER UPGRADE)
1:96



3 24 UNIT BLOCK - LEFT ELEVATION
1:96

1 ISSUED FOR SPA | 2026.04.27 | JM

Issued / Revision Chart

**OAST Stacked Towns
CONSERVANCY PH6**

Ottawa, ON

CAIVAN

Project No. 25033

Scale 1:96

Drawn By

Checked By CT

ELEVATIONS

2024-09-06 2:56:48 C:\Users\swanson\Documents\OAST Stacked Towns\Block_24 Units\wast\Rev2\A1.rvt

Q4 ARCHITECTS INC.

4110 Yonge Street
Suite 602, Toronto ON
M2P 2B7

T: 416.322.6334
F: 416.322.7394
E: info@q4architects.com



The contractor / builder must verify all dimensions on the job and report any discrepancy to the designer before proceeding with the work. Drawings are NOT to be scaled. All drawings and specifications are instruments of service and the copyright property of the designer and must be returned upon request.

G4 Architects Inc. retains the copyright in all drawings, plans, sketches, and all digital information. They may not be copied or used for any other projects or purposes or distributed without the written consent of G4 Architects Inc.

NOTES:

Block elevations are to vary between blocks with the two provided options, Option 1 and Option 2.

Blocks 1, 12 and 13, which front a public ROW, will have Typical front elevations, with Upgraded rear elevations varying between Option 1 and Option 2.

Blocks 9 and 10, which back onto Flewellyn Road, will have Typical front elevations, with Upgraded rear elevations varying between Option 1 and Option 2.

Block 11, which backs onto a public ROW, will use the no rear deck stairs style, elevations shown on sheet A-7.

Elevation style to vary between blocks.



③ 24 UNIT BLOCK - UPGRADE RIGHT ELEVATION
1:96

② 24 UNIT BLOCK - UPGRADE REAR ELEVATION - OPTION 2 (CORNER UPGRADE)
1:96

| | | |
|------------------|------------|----|
| 1 ISSUED FOR SPA | 2026.04.27 | JM |
|------------------|------------|----|

Issued / Revision Chart

**OAST Stacked Towns
CONSERVANCY PH6**

Ottawa, ON

CAIVAN

Project No. **25033**

Scale **1:96**

Drawn By **JM**

Checked By **CT**

ELEVATIONS