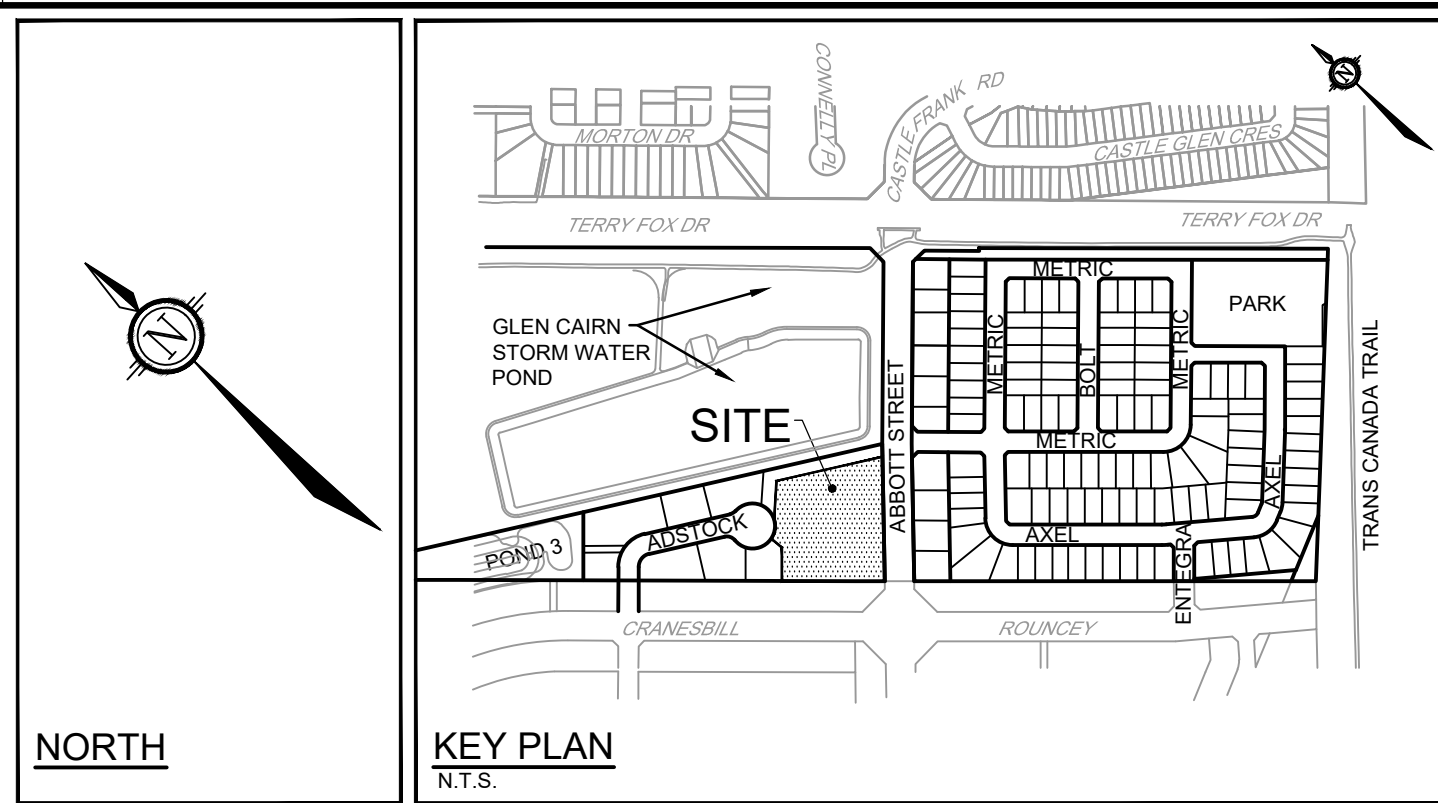


CITY DETAILS
 Related details from City of Ottawa Standard Tender Documents
 Volume No. 2 Standard Detail Drawings

SC4. Typical Concrete Sidewalk in Boulevard
 SC5. Sidewalk Construction Joints

NOVATECH DETAILS
 Found on Sheet L2.

D1. Standard Deciduous Tree Planting
 D2. Standard Coniferous Tree Planting
 D3. Shrub and Perennial Planting
 D4. Tree Protection Fence
 D5. Wood Screen Detail
 D6. Bike Layout



- LEGEND**
- 3-D1 NOVATECH OR CITY DETAIL NUMBER SEE LIST FOR CODE
 - PROPERTY LIMIT
 - PROPOSED CONCRETE
 - PROPOSED PAVERS
 - RIVER STONE
 - SOD
 - PERENNIALS
 - ORNAMENTAL GRASSES
 - PROPOSED DECIDUOUS TREE
 - PROPOSED TREES (BY OTHERS)
 - EXISTING TREES TO REMAIN
 - EXISTING TREES TO BE REMOVED
 - PROPOSED TREE PROTECTION FENCE
 - PROPOSED SHRUBS
 - SPECIES (SEE PLANT LIST)
 - QUANTITY
 - PROPOSED WOOD PRIVACY FENCE 1.8m HT
 - EXISTING WOOD PRIVACY FENCE 1.8m HT (BY OTHERS)
 - 4.5m TREE SETBACK FROM THE BUILDING, PER GEOTECH REPORT
 - BENCHES
 - BIKE RACKS
 - EXISTING STREET LIGHTS
- GENERAL**
- Read and interpret this drawing/ drawing set in conjunction with all the contract details and specifications, including related civil, utility, structural, architectural, mechanical, electrical, environmental, geotechnical, and survey information.
 - The Contractor is to determine the exact location, size, material, and elevation of all existing utilities prior to commencing construction. Protect and assume responsibility for all existing utilities regardless of being shown on the drawings.
 - It is essential to use the plans and details in conjunction with the specifications and notes.
 - Do not scale drawings. Work to dimensions only.
 - Protect all existing and retained vegetation for the duration of construction according to the contract details and specifications.
 - Reinstate all areas and items damaged or disturbed, beyond the Limit of Work, because of construction activities, including but not limited to construction staging areas, haul roads, stockpile areas, etc. to the satisfaction of the Consultant. Unless otherwise noted, Contractor is to reinstate all areas to pre-construction condition or better to the satisfaction of the Contract Administrator.
- PLANTING**
- Plant material to be No. 1 Grade and is to comply with Canadian Standards for Nursery Stock (latest edition) published by the Canadian Nursery Landscape Association.
 - Use structurally sound plant material with strong fibrous root system free of diseases, defects, and injuries. Use trees with straight trunks, well and characteristically branched for species. Obtain approval from consultant of plant material at source prior to digging. All trees and shrubs to be container grown, potted, W/B or B/B, as indicated on Plant List. Bare root plants are only acceptable for certain species and as approved by the Landscape Architect.
 - Plant material substitutions are not to be permitted without the written approval from the Consultant, with 48 hours notice, prior to shipping plant material.
 - Plant locations are schematic/ approximate only. Contractor is to stake out locations on site for approval by the Landscape Architect prior to installation.
 - The illustrated number of plants shown in the Planting Plan supersedes the estimated number in the Plant List. Contractor to report any discrepancies to the Landscape Architect prior to installation. Contractor will assume full responsibility if the Landscape Architect is not notified.
 - Ensure trees are thoroughly watered following planting. Monitor material and ensure adequate moisture until acceptance.
 - In heavy clay or poorly drained soils, set root ball with root collar 75-100mm higher than finished grade.
 - Approved topsoil depths are as follows:
 - Plant Beds - 450mm continuous depth. Applies to shrubs, perennials, vines, and groundcovers.
 - Sod/ Seed Areas - 100mm depth.
 - Reforestation - 300mm depth.
 - Sod to be No. 1 Kentucky Bluegrass Sod grown from minimum mixture of 3 Kentucky Bluegrass cultivars. Quality and source are to comply with Canadian Standards for Nursery Stock, Section 17, (latest edition) published by the Canadian Nursery Landscape Nursery Landscape Association.
 - Apply the following mineral fertilizer unless soil tests show other requirements:
 - Plant Beds - (8-32-16), i.e. 8% Nitrogen, 32% Phosphorus, 16% Potash per manufacturer specifications.
 - Sod Areas - (8-32-16), i.e. 8% Nitrogen, 32% Phosphorus, 16% Potash at a rate of 350kg/ha.
 - Where applicable for any plant species with a mix of species/ cultivars notes, Contractor is to cluster like plants in groups of 3-5 and evenly distribute these in the noted area.

PROPOSED PLANT LIST

KEY	QTY	BOTANICAL NAME	COMMON NAME	SIZE	COND	SPACING	NATIVE/NON-NATIVE*
Deciduous Trees (Large)							
GBA	4	Ginkgo biloba 'Autumn Gold'	Autumn Gold Ginkgo	50mm Gal	W/B	As Shown	Non-Native
GTK	2	Gleditsia triacanthos var. 'inermis 'Skyline'	Skyline Honeylocust	50mm Gal	W/B	As Shown	Native
Deciduous Trees (Medium)							
ARU	4	Acer rubrum 'Autumn Redland'	Autumn Redland Red Maple	50mm Gal	W/B	As Shown	Native
ARU	5	Acer rubrum 'Sun Valley'	Sun Valley Red Maple	50mm Gal	W/B	As Shown	Native
CGZ	7	Colutea crotolaria 'Crown'	Crown Tree Fern	50mm Gal	W/B	As Shown	Native
GTK	2	Gleditsia triacanthos var. 'inermis 'tricolor'	Imperial Honeylocust	50mm Gal	W/B	As Shown	Native
GTK	2	Gleditsia triacanthos var. 'inermis 'Sunburst'	Sunburst Honeylocust	50mm Gal	W/B	As Shown	Native
TMH	1	Tilia cordata 'impressum 'Honey Gold'	Honey Gold Linden	50mm Gal	W/B	As Shown	Non-Native
Deciduous Trees (Small)							
AC	3	Americanlar canadensis (Single stem)	Shadblow Serviceberry	40mm Gal	W/B	As Shown	Native
ALS	4	Americanlar horzontalis 'Spring Rainy'	Spring Rainy Serviceberry	50mm Gal	W/B	As Shown	Native
BPW	1	Betula populifolia 'Whitetrace'	Whitetrace Birch	50mm Gal	W/B	As Shown	Native
Coniferous Shrubs							
Jcc	36	Juniperus communis 'Green Carpet'	Green Carpet Juniper	40cm Spr	PT	As Shown	Non-Native
Jwb	44	Juniperus horizontalis 'Wiltonii'	Blue Rug Juniper	30	PT	As Shown	Non-Native
ML	6	Monarda didyma	Eleonora Carpet Cypress	100cm O.C.	PT	As Shown	Non-Native
Txh	12	Taxus media 'Hicksii'	Hicks Yew	100cm BB	PT	As Shown	Non-Native
Deciduous Shrubs							
Ang	36	Anemone nemorosa Ground Hg	Ground Hg Anemone	1g	PT	10cm O.C.	Native
Axl	72	Aconitum Low-Scape Mount (LCCOMMAYES)	Low-Scape Mount Choleberry	10cm H	PT	As Shown	Native
Df	83	Dianthus barbatus 'Fruity Nigella'	Fruity Nigella/ Bath Honorary (B Medial)	60cm H	PT	As Shown	Native
Ph	27	Phlox paniculata 'SWEETIE'	Flax Lily Phlox	60cm H	PT	As Shown	Native
Pks	13	Philadelphus 'Snowball'	Snowball Mockorange	90cm H	PT	As Shown	Non-Native
Sdp	47	Symphoricarpos doerflingeri 'Kempfer'	Pink Promise Snowberry	90cm H	PT	As Shown	Native
Perennials							
ht	50	Hemerocallis 'Van Sester'	Van Sester Daylily	1g	PT	30cm O.C.	Non-Native
ht	50	Hemerocallis 'Mira Swift Drop'	Mira Swift Daylily	1g	PT	30cm O.C.	Non-Native
ht	50	Hemerocallis 'Parade Star'	Parade Star Daylily	1g	PT	30cm O.C.	Non-Native
ht	120	Helleborus 'August Moon'	August Moon Hellebore	1g	PT	As Shown	Native
hgm	40	Hyacinthus multiflorus	Solomon's Seal	1g	PT	30cm O.C.	Non-Native
Ornamental Grasses / Ferns							
gr	50	Calamagrostis acutiflora 'Karl Foerster'	Karl Foerster Feather Reed Grass	1g	PT	90cm O.C.	Non-Native
sa	350	Saxifraga autumnalis	Autumn Moor Grass	1g	PT	30cm O.C.	Non-Native
sh	120	Shizocorymbus scoparium 'The Bunch'	The Bunch Hair Bluestem	1g	PT	30cm O.C.	Native
sh	120	Sporobolus heterostachyus	Flame Drizzle	1g	PT	30cm O.C.	Native
svg	154	Plantain virginicum	Six Rib Grass	1g	PT	90cm O.C.	Native

Proposed Trees - Ownership

Ownership	Total
Private	35
City-Owned (ROW)	0

EXISTING TREES - INVENTORY

No.	Botanical Name	Common Name	DBH (cm)	CRZ (m)	Condition	Owner	Remarks	Recomm.
1	Acer saccharum	Sugar Maple	5.0	0.50	F	Public	Mechanical damage to base of stem	PROTECT
2	Acer saccharum	Sugar Maple	5.0	0.50	F	Public	Mechanical damage to base of stem	PROTECT
3	Acer saccharum	Sugar Maple	5.0	0.50	P	Public	Severe mechanical damage at base of stem	PROTECT
4	Acer x freemanii	Freeman Maple outbar	5.0	0.50	F	Public	Damage to roots from construction activities	PROTECT
5	Gleditsia triacanthos var. inermis	Thomson Honey Locust	5.0	0.50	F	Public	Mechanical damage to base of stem	PROTECT
6	Acer x freemanii	Freeman Maple outbar	12.0	1.00	G	Client	Minor stem near base of stem. Lower branch release removed for long term health	Conflict
7	Acer ginnale	Amur Maple	7.0	0.70	G	Client	Multi-stem / Small minor wound at base of stem	Conflict

REVIEWED BY DEVELOPMENT REVIEW BRANCH

Signed _____
 Date _____ 2026
 Plan Number 19260

LEGAL DESCRIPTION:
 Block 123, Plan 4M-1616, Ottawa

NOTE:
 THE POSITION OF ALL POLE LINES, CONDUITS, WATERMANS, SEWERS AND OTHER UNDERGROUND AND OVERGROUND UTILITIES AND STRUCTURES IS NOT NECESSARILY SHOWN ON THE CONTRACT DRAWINGS, AND WHERE SHOWN, THE ACCURACY OF THE POSITION OF SUCH UTILITIES AND STRUCTURES IS NOT GUARANTEED. BEFORE STARTING WORK, DETERMINE THE EXACT LOCATION OF ALL SUCH UTILITIES AND STRUCTURES AND ASSUME ALL LIABILITY FOR DAMAGE TO THEM.

Owner:
 SPB Developments Inc.
 c/o Shoen Barrier & Metic Homes
 4829 Abbott Street East
 Kanata, ON K2V 0L4
 Phone: (613) 301-7792

Architect:
 Hobin Architecture Inc.
 c/o Todd Duckworth
 63 Pamela Street,
 Ottawa, ON K1S 3K7
 Phone: (613) 681-8994

Civil:
 Novatech Engineers, Planners & Landscape Architects
 c/o Alex McAuley
 240 Michael Cowpland Drive,
 Ottawa, ON K2M 1P6
 Phone: 613.254.9643

Planning:
 Novatech Engineers, Planners & Landscape Architects
 c/o Miranda Virginlio
 240 Michael Cowpland Drive,
 Ottawa, ON K2M 1P6
 Phone: 613.254.9643

DISCLAIMER:
 The elements on this plan illustrate the design intent and general constructability of the proposed landscape which will support the associated development. This is to demonstrate how the canopy cover, urban design, health, and climate change objectives of the Official Plan will be met through the planting and site design. This drawing is for City review only and is not intended for construction. Final detailed design and construction documentation is to be provided with certified 'Issued for Construction' drawings and specifications prior to construction.

No.	REVISION	DATE	BY
7	REVISED PER CITY AND MVCA COMMENTS	APR 22/26	RGJ
6	RE-ISSUED FOR SITE PLAN APPLICATION	MAR 11/26	RGJ
5	ISSUED FOR PATERSON REVIEW	FEB 12/26	RGJ
4	ISSUED FOR COORDINATION	JAN 27/26	RGJ
3	RE-ISSUED FOR SITE PLAN APPLICATION	AUG 07/25	RGJ
2	ISSUED FOR SITE PLAN APPLICATION	JUN 12/25	RGJ
1	ISSUED FOR COORDINATION	JUN 5/25	RGJ

SCALE
 1:200

FOR REVIEW ONLY

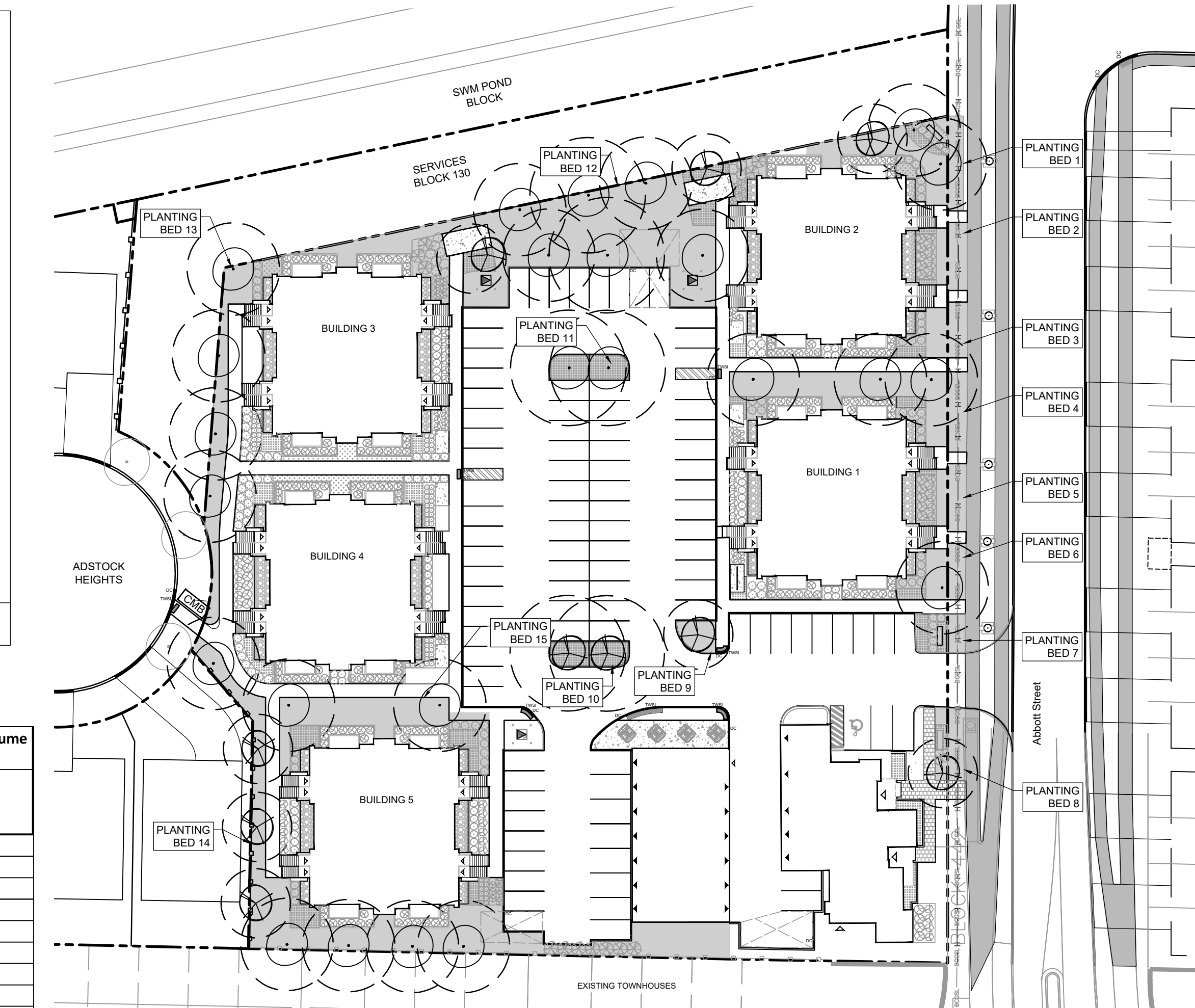
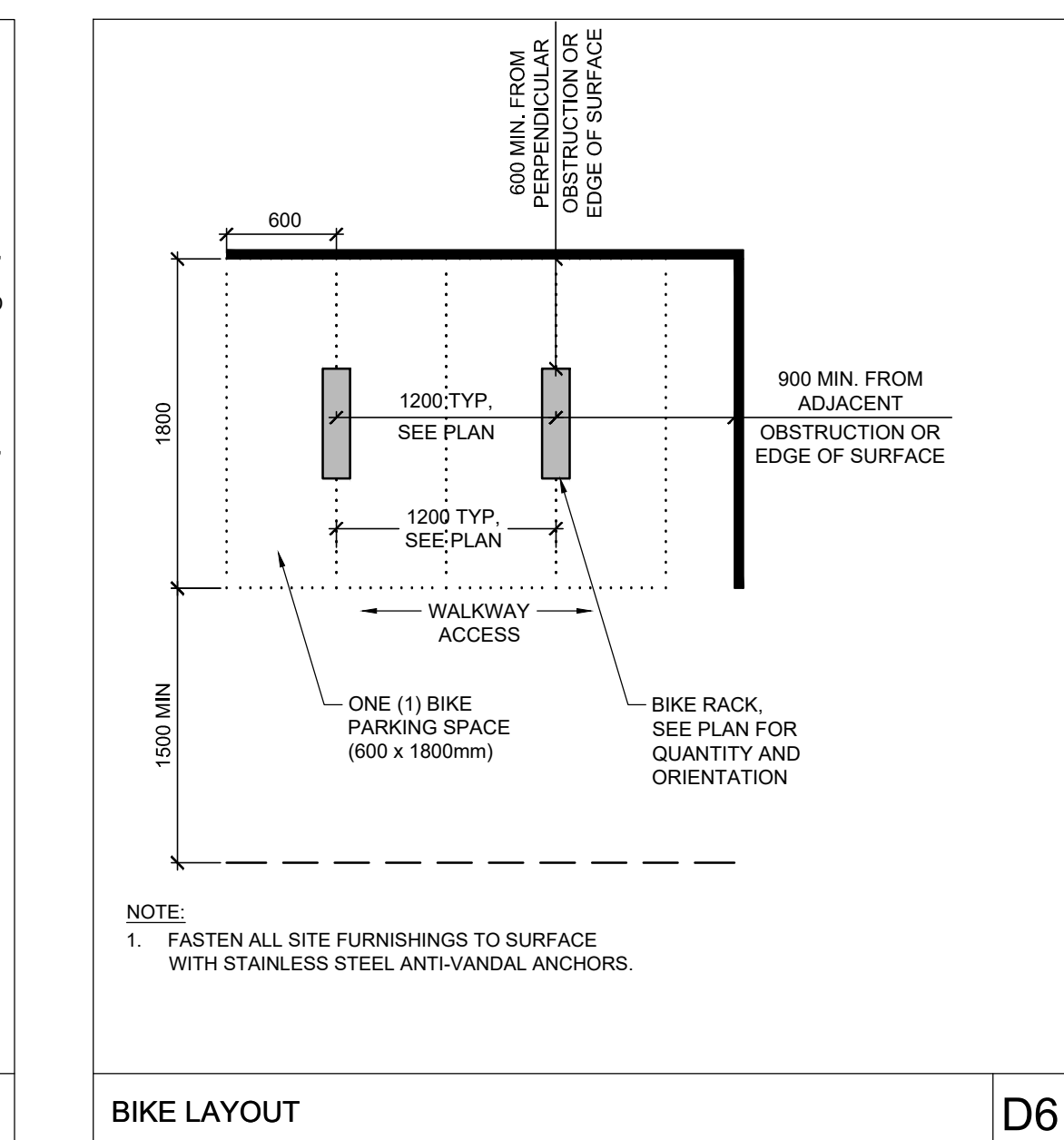
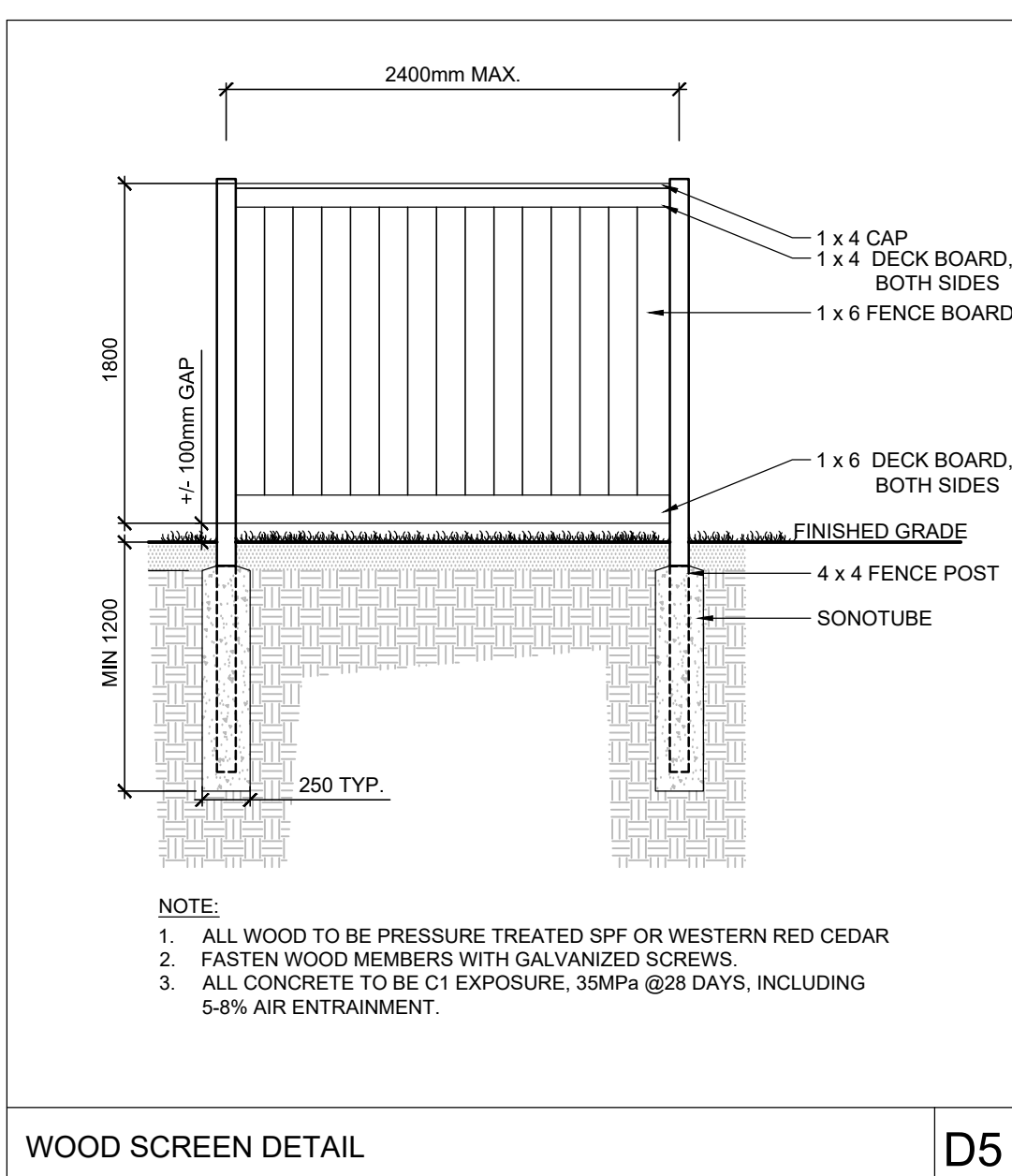
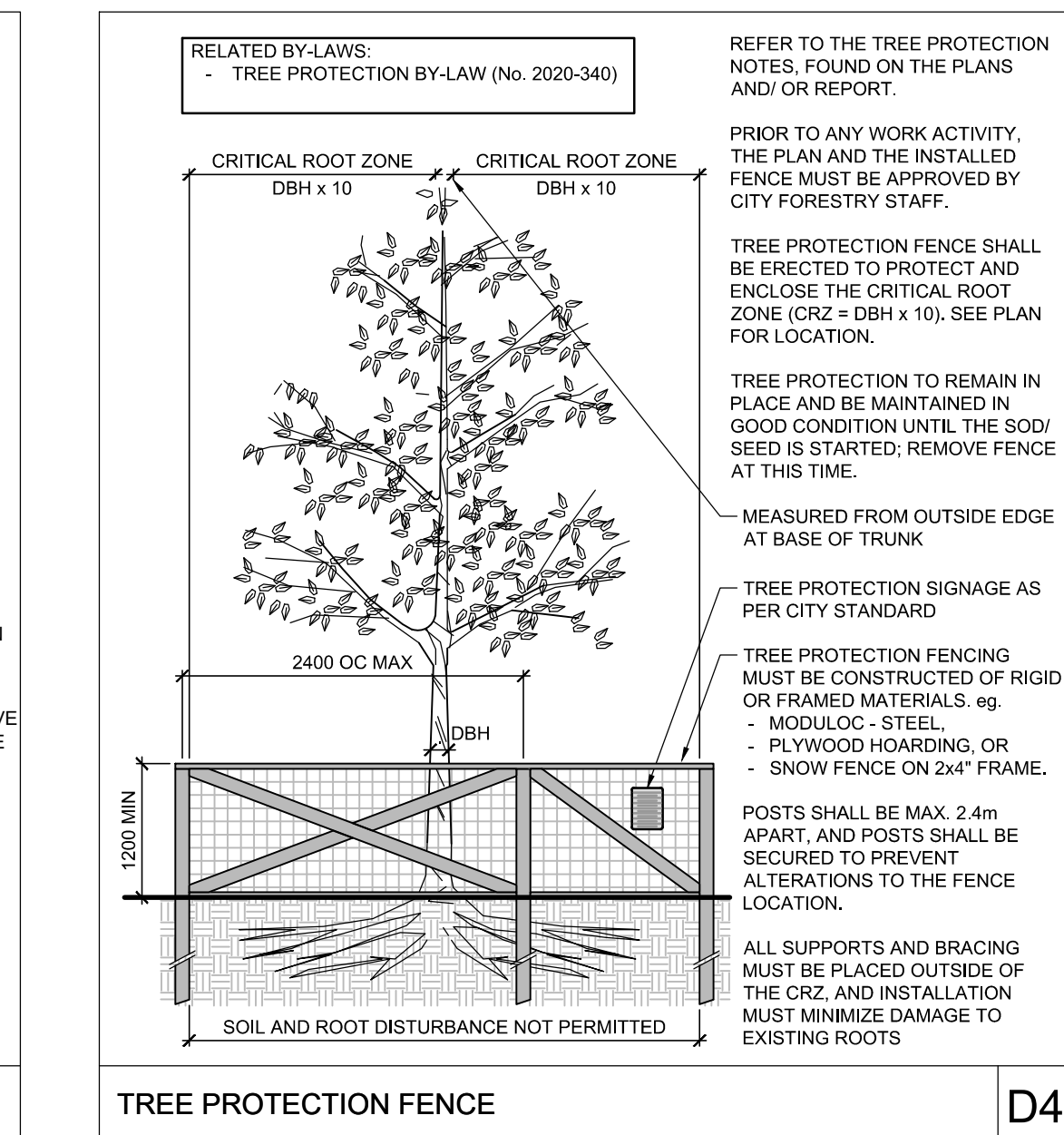
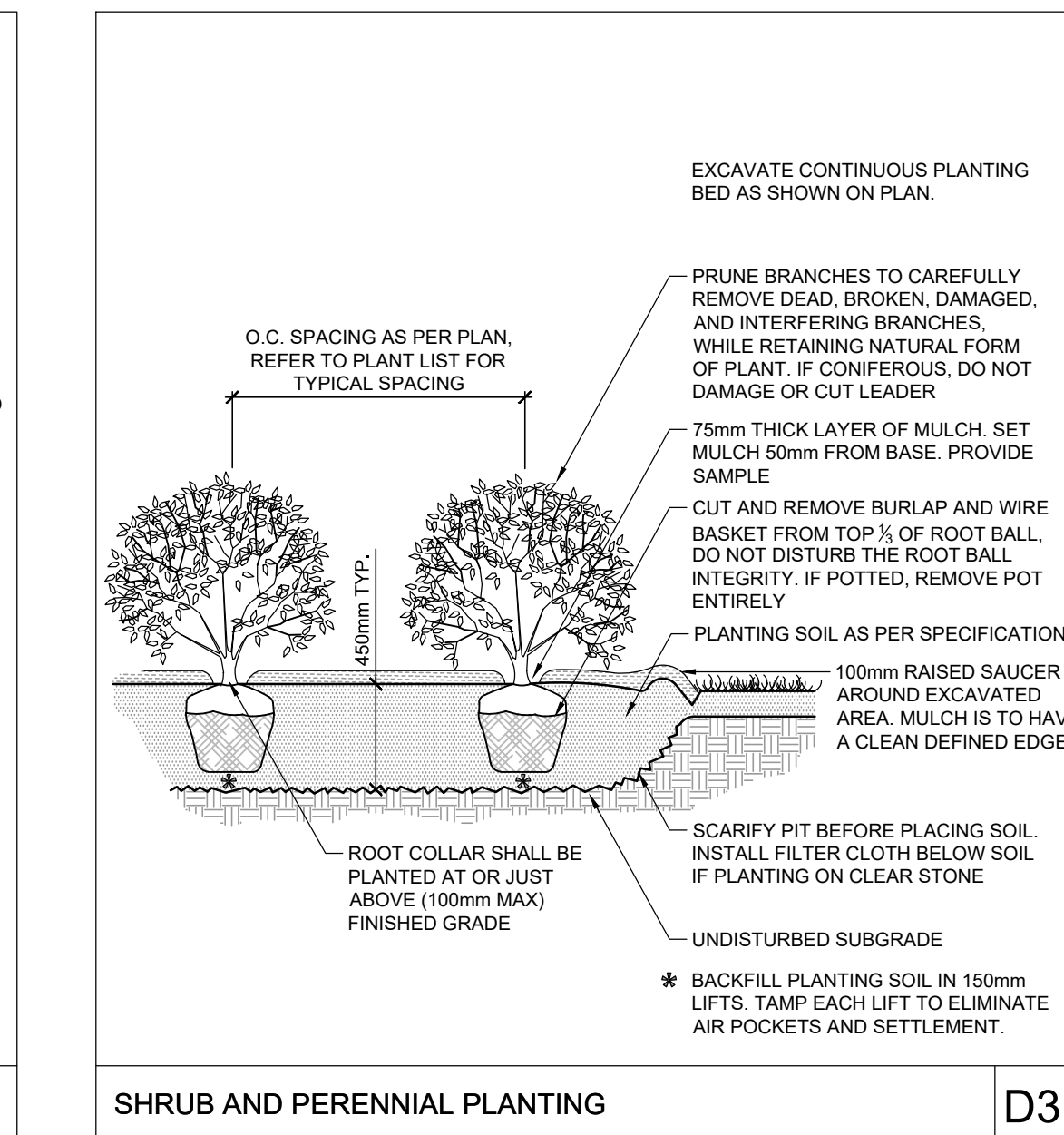
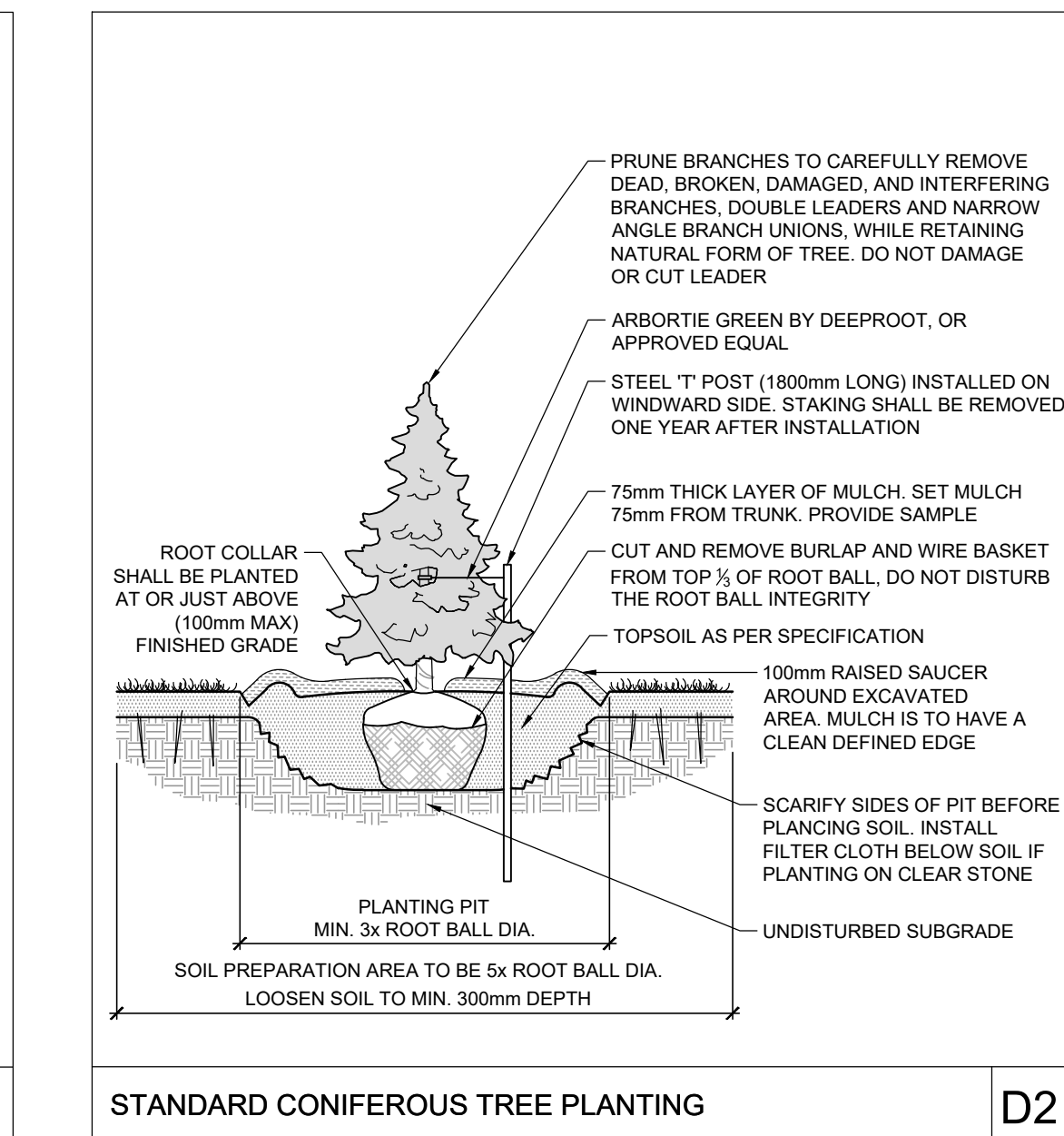
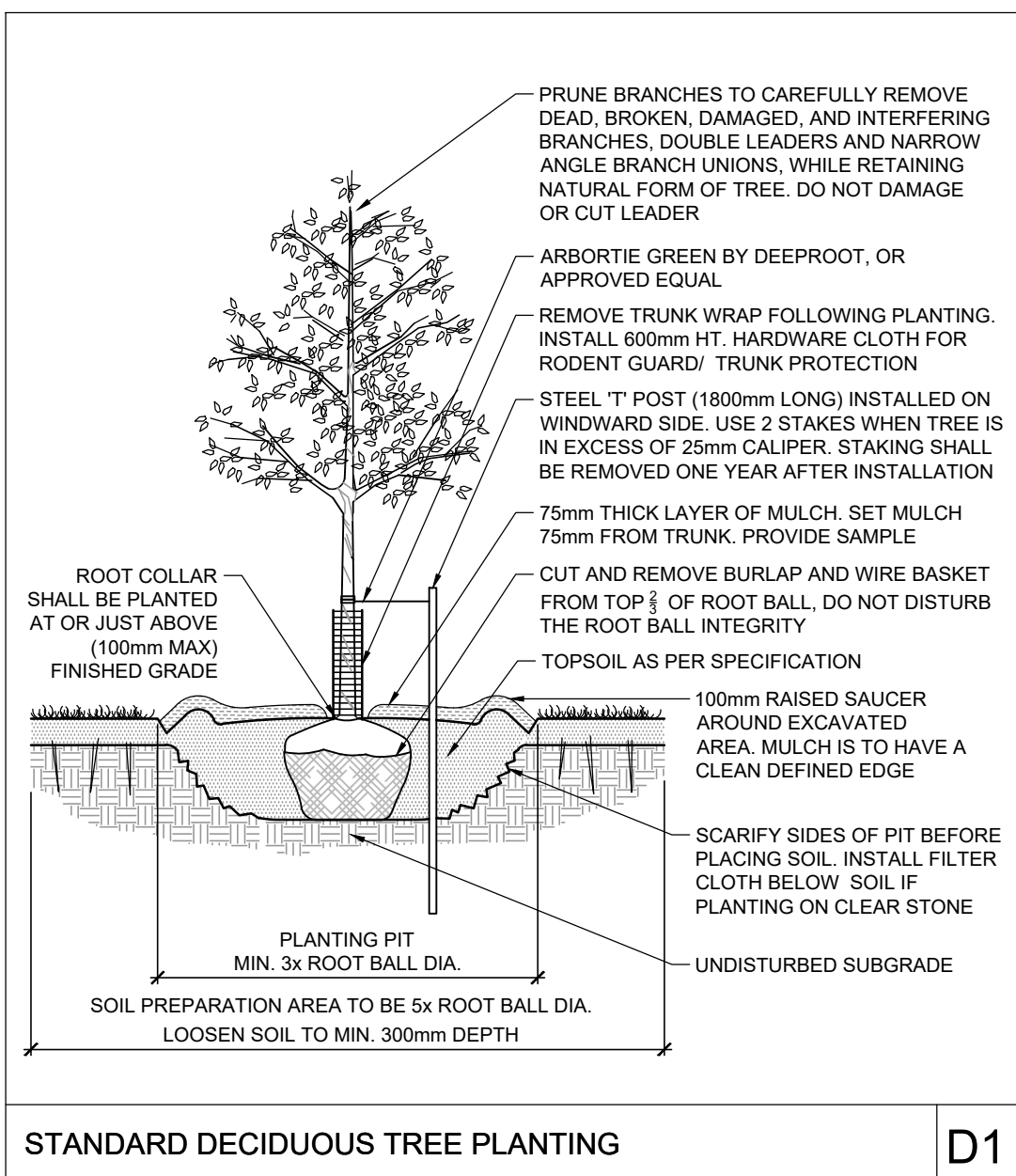
Checked: TCB
 Drawn: RGJ
 Checked: TCB
 Approved: RGJ

NOVATECH
 Engineers, Planners & Landscape Architects
 Suite 200, 240 Michael Cowpland Drive
 Ottawa, Ontario, Canada K2M 1P6
 Telephone: (613) 254-9643
 Facsimile: (613) 254-5867
 Website: www.novatech-eng.com

SPB DEVELOPMENTS INC.
 METRIC HOMES SUBDIVISION - BLOCK 123
 4829 ABBOTT STREET EAST, KANATA

DRAWING NAME:
 LANDSCAPE PLAN AND TREE CONSERVATION PLAN

PROJECT NO.: 110037
REV #: 7
DRAWING NO.: 110037-B123-1



SOIL AVAILABILITY CALCULATION

Planting bed no.	Available Soil Area (sq m)	Available Soil Volume* (cu m)	No. of trees proposed			Total No. of trees	Min. required Soil volume total (cu m)
			Small (min. 25m ³ soil for single & 15m ² for shared)	Medium (min. 30m ³ soil for single & 18m ² for shared)	Large (min. 35m ³ soil for single & 20m ² for shared)		
Planting bed 1	121	182	1	2	3	51.00	
Planting bed 2	52	79	0	0	0	0.00	
Planting bed 3	52	78	0	0	0	0.00	
Planting bed 4	165	248	3	3	3	54.00	
Planting bed 5	51	76	0	0	0	0.00	
Planting bed 6	51	77	1	1	1	30.00	
Planting bed 7	32	48	0	0	0	0.00	
Planting bed 8	38	56	1	1	1	25.00	
Planting bed 9	17	26	1	1	1	25.00	
Planting bed 10	30	46	2	2	2	40.00	
Planting bed 11	31	46	2	2	2	40.00	
Planting bed 12	453	680	2	4	8	142.00	
Planting bed 13	101	151	4	4	4	72.00	
Planting bed 14	351	527	3	5	8	135.00	
Planting bed 15	139	209	2	2	2	36.00	

*Note 1: For all planting beds proposed, the available soil depth is considered to be 1.5m due to clay soil conditions.

CANOPY COVERAGE CALCULATION

PROPOSED CANOPY COVERAGE AT MATURITY				
SIZE OF PROPOSED TREE	AVERAGE MATURE SPREAD	CANOPY COVERAGE PER TREE AT MATURITY (m ²)	QUANTITY OF TREES	TOTAL CANOPY COVERAGE
Deciduous trees- Small	5m	20	8	160
Deciduous trees- Medium	10m	79	21	1659
Deciduous trees- Large	14m	154	6	924
TOTAL PROPOSED CANOPY COVERAGE (m²):				1,819
TOTAL SITE AREA (m²):				8,155
EST. PROPOSED CANOPY COVERAGE (%):				22%

1. Area of a circle = (r x r) x π
 2. Canopy coverage per tree calculation: (average mature spread/2) x (average mature spread/2) x π
 3. ROW trees along Abbott Street have not been counted under the retained canopy coverage category.

REVIEWED BY DEVELOPMENT REVIEW BRANCH
 Signed _____
 Date _____ 2026
 Plan Number 19360

LEGAL DESCRIPTION:
 Block 123, Plan 4M-1616, Ottawa

NOTE:
 THE POSITION OF ALL POLE LINES, CONDUITS, WATERMANS, SEWERS AND OTHER UNDERGROUND AND OVERGROUND UTILITIES AND STRUCTURES IS NOT NECESSARILY SHOWN ON THE CONTRACT DRAWINGS, AND WHERE SHOWN, THE ACCURACY OF THE POSITION OF SUCH UTILITIES AND STRUCTURES IS NOT GUARANTEED. BEFORE STARTING WORK, DETERMINE THE EXACT LOCATION OF ALL SUCH UTILITIES AND STRUCTURES AND ASSUME ALL LIABILITY FOR DAMAGE TO THEM.

Owner:
 SPB Developments Inc.
 c/o Sherrin Barrer at Metric Homes
 4829 Abbott Street East
 Kanata, ON K2V 0L4
 Phone: (613) 301-7792

Architect:
 Hobin Architecture Inc.
 c/o Todd Duckworth
 63 Pamela Street,
 Ottawa, ON K1S 3K7
 Phone: (613) 651-8954

Civil:
 Novatech Engineers, Planners & Landscape Architects
 c/o Alex McAuley
 240 Michael Cowpland Drive,
 Ottawa, ON, K2M 1P6
 Phone: 613.254.9643

Planning:
 Novatech Engineers, Planners & Landscape Architects
 c/o Miranda Virginlio
 240 Michael Cowpland Drive,
 Ottawa, ON, K2M 1P6
 Phone: 613.254.9643

DISCLAIMER:
 The elements on this plan illustrate the design intent and general constructability of the proposed landscape which will support the associated development. This is to demonstrate how the canopy cover, urban design, health, and climate change objectives of the Official Plan will be met through tree planting and site design. This drawing is for City review only and is not intended for construction. Final detailed design and construction documentation is to be provided with certified 'issued for construction' drawings and specifications prior to construction.

No.	REVISION	DATE	BY
7.	REVISED PER CITY AND MVCA COMMENTS	APR 22/26	RGJ
6.	RE-ISSUED FOR SITE PLAN APPLICATION	MAR 11/26	RGJ
5.	ISSUED FOR PATERSON REVIEW	FEB 12/26	RGJ
4.	ISSUED FOR COORDINATION	JAN 27/26	RGJ
3.	RE-ISSUED FOR SITE PLAN APPLICATION	AUG 07/25	RGJ
2.	ISSUED FOR SITE PLAN APPLICATION	JUN X25	RGJ
1.	ISSUED FOR COORDINATION	JUN 5/25	RGJ

SCALE	FOR REVIEW ONLY
1:200	TCB
1:200	RGJ
1:200	TCB
1:200	RGJ
1:200	RGJ



SPB DEVELOPMENTS INC.
 METRIC HOMES SUBDIVISION - BLOCK 123
 4829 ABBOTT STREET EAST, KANATA

DRAWING NAME
**LANDSCAPE DETAILS,
 CANOPY COVERAGE AND SOIL
 AVAILABILITY CALCULATIONS**

PROJECT NO.: 110037
 REV: REV #7
 DRAWING NO.: 110037-B123-12

C:\Users\10007\OneDrive\Desktop\110037_Plan\110037-B123-12.dwg, L2, Apr 16, 2026, 5:59pm, Novatech

#19360