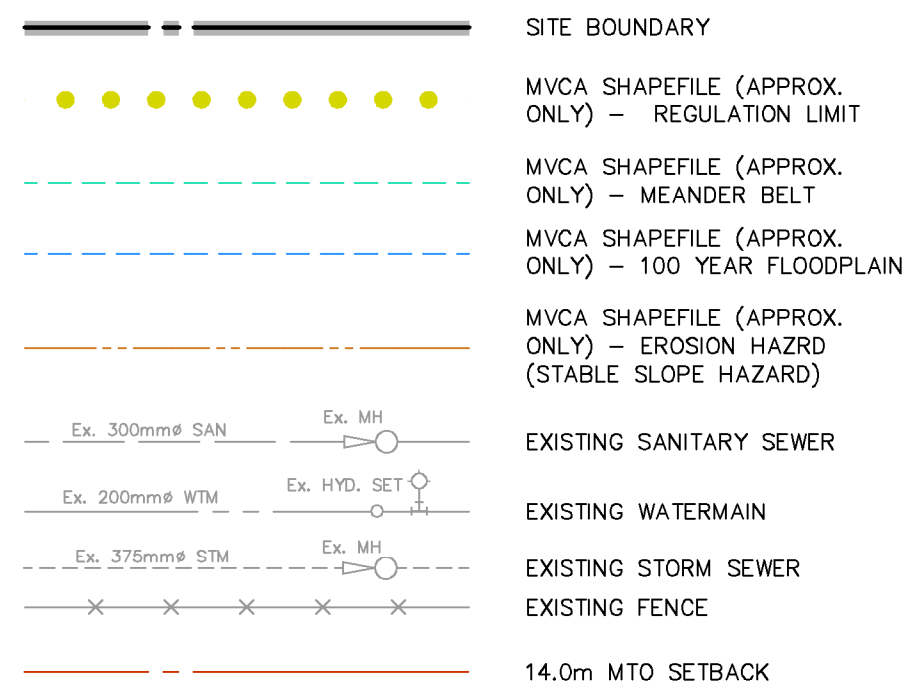
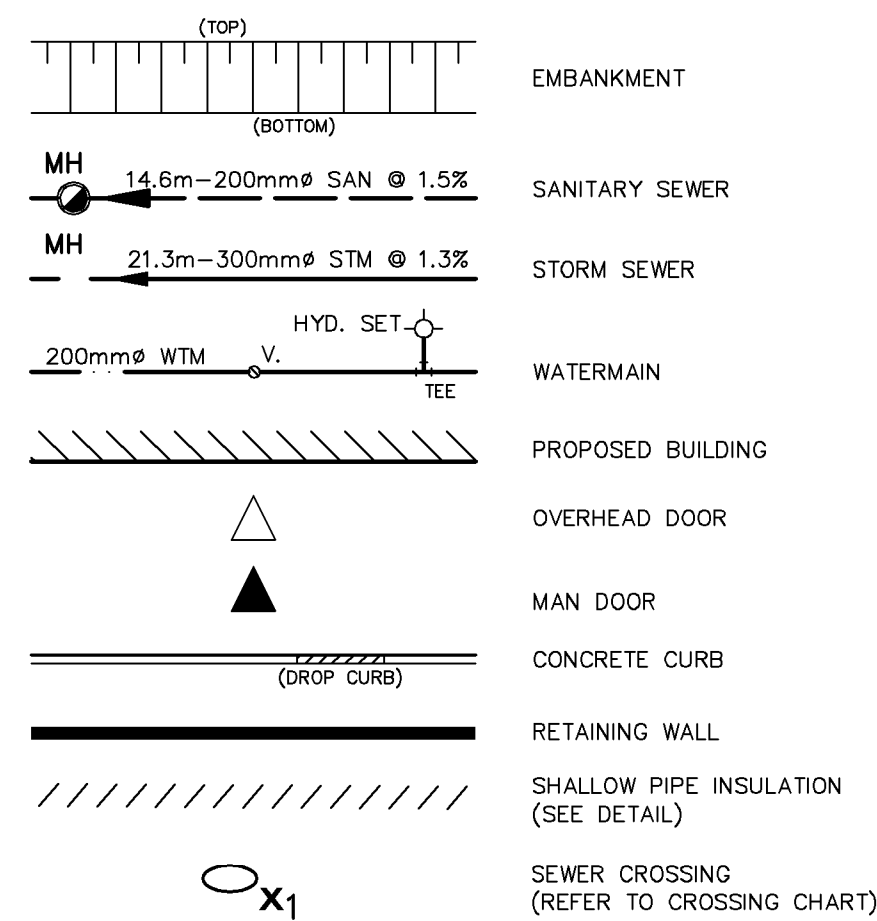


LEGEND OF EXISTING FEATURES



LEGEND OF PROPOSED FEATURES

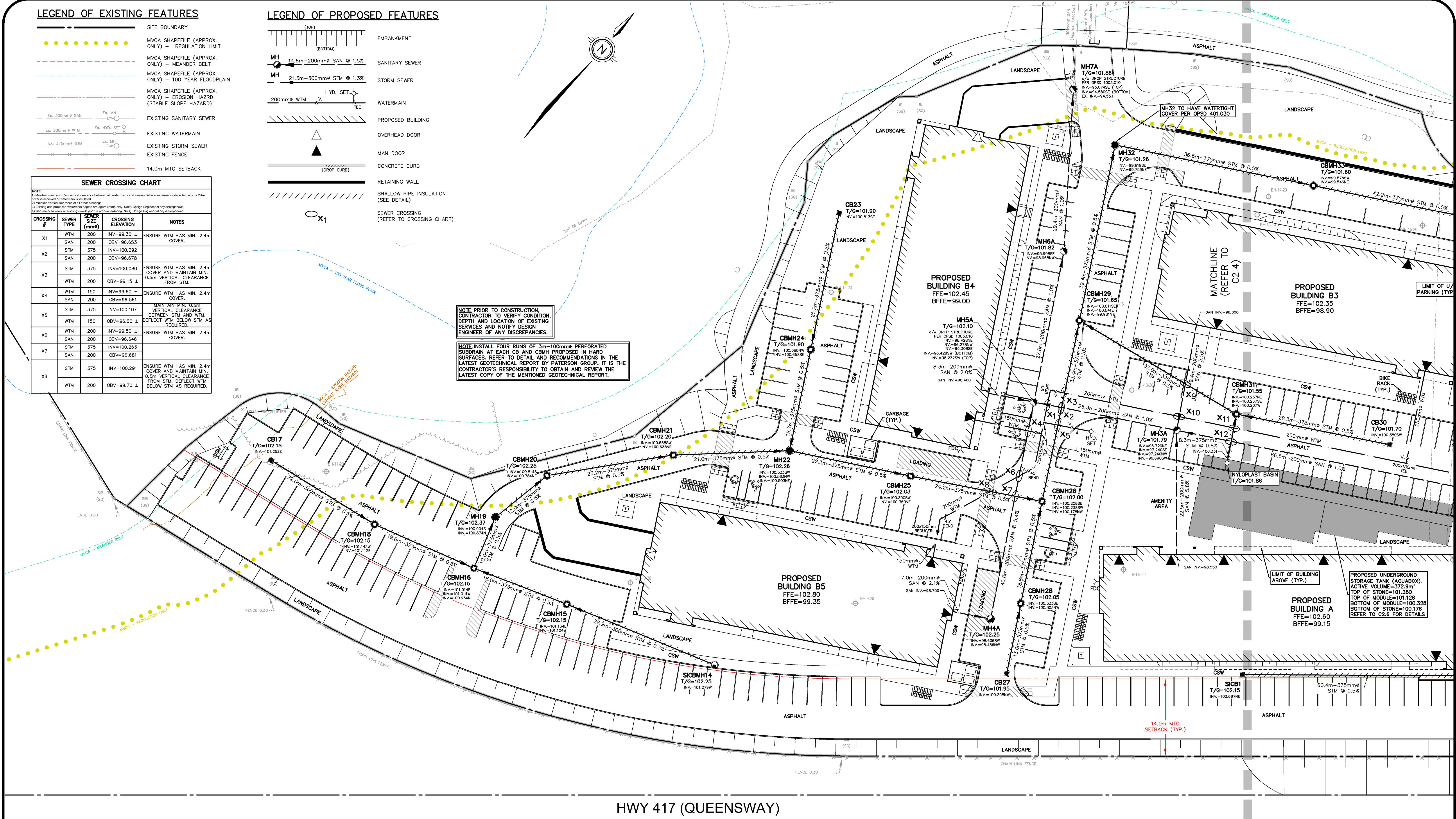


SEWER CROSSING CHART

CROSSING #	SEWER TYPE	SEWER SIZE (mm)	CROSSING ELEVATION	NOTES
X1	WTM	200	INV=99.30 ±	ENSURE WTM HAS MIN. 2.4m COVER.
X2	SAN	200	OBV=96.653	
	STM	375	INV=100.092	
X3	SAN	200	OBV=96.678	ENSURE WTM HAS MIN. 2.4m COVER AND MAINTAIN MIN. 0.5m VERTICAL CLEARANCE FROM STM.
	STM	375	INV=100.080	
X4	WTM	150	INV=99.60 ±	ENSURE WTM HAS MIN. 2.4m COVER.
	SAN	200	OBV=96.561	
X5	STM	375	INV=100.107	MAINTAIN MIN. 0.5m VERTICAL CLEARANCE BETWEEN STM AND WTM. DEFLECT WTM BELOW STM AS REQUIRED.
	WTM	150	OBV=96.60 ±	
X6	WTM	200	INV=99.50 ±	ENSURE WTM HAS MIN. 2.4m COVER.
	SAN	200	OBV=96.646	
X7	STM	375	INV=100.283	ENSURE WTM HAS MIN. 2.4m COVER AND MAINTAIN MIN. 0.5m VERTICAL CLEARANCE FROM STM. DEFLECT WTM BELOW STM AS REQUIRED.
	SAN	200	OBV=96.681	
X8	STM	375	INV=100.291	ENSURE WTM HAS MIN. 2.4m COVER AND MAINTAIN MIN. 0.5m VERTICAL CLEARANCE FROM STM. DEFLECT WTM BELOW STM AS REQUIRED.
	WTM	200	OBV=99.70 ±	

NOTE: PRIOR TO CONSTRUCTION, CONTRACTOR TO VERIFY CONDITION, DEPTH AND LOCATION OF EXISTING SERVICES AND NOTIFY DESIGN ENGINEER OF ANY DISCREPANCIES.

NOTE: INSTALL FOUR RUNS OF 3m-100mm# PERFORATED SUBDRAIN AT EACH CB AND CBMH PROPOSED IN HARD SURFACES. REFER TO DETAIL AND RECOMMENDATIONS IN THE LATEST GEOTECHNICAL REPORT BY PATERSON GROUP. IT IS THE CONTRACTOR'S RESPONSIBILITY TO OBTAIN AND REVIEW THE LATEST COPY OF THE MENTIONED GEOTECHNICAL REPORT.



HWY 417 (QUEENSWAY)

NOTE:

- PROPERTY LINE IS APPROXIMATE ONLY AND SHOULD NOT BE USED FOR DETERMINING SETBACKS OR LAYOUT.
- EXISTING TOPOGRAPHICAL INFORMATION PROVIDED BY STANTEC, DATED JANUARY 23, 2026.
- ALL MVCA LINEWORK SHOWN ON THIS PLAN IS TAKEN FROM SHAPEFILE PROVIDED BY STANTEC AND IS APPROXIMATE ONLY.
- INVERTS DENOTED WITH "±" ARE TAKEN FROM AS-BUILT PLAN AND PROFILE DRAWINGS COMPLETED BY IBI GROUP, DATED OCTOBER 7, 2015, AND GENERAL PLAN OF SERVICES PLAN PREPARED BY IBI GROUP, DATED AUGUST 21, 2013 AND ARE CONSIDERED APPROXIMATE ONLY. CONTRACTOR TO FIELD VERIFY AND REPORT ANY DISCREPANCIES TO ENGINEER.
- THIS PLAN IS PART OF A SET OF PLANS WHICH COMPRISE OF THE FOLLOWING: C1.1, C2.0, C2.1, C2.2, C2.3, C2.4, C2.5 AND C2.6.

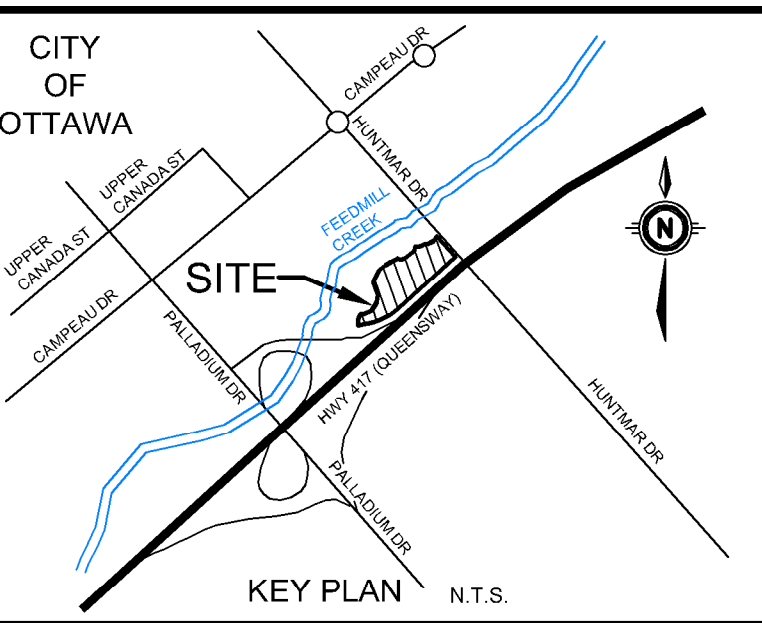
NOTE TO CONTRACTOR:

DO NOT SCALE DRAWINGS.

CONTRACTORS MUST CHECK AND VERIFY ALL DIMENSIONS AND REPORT ANY DISCREPANCIES TO THE ENGINEER BEFORE PROCEEDING WITH THE WORK.

ALL DRAWINGS REMAIN THE PROPERTY OF THE ENGINEER AND SHALL NOT BE REPRODUCED OR REUSED WITHOUT THE ENGINEER'S WRITTEN PERMISSION.

THE OWNER/ARCHITECT/CONTRACTOR IS ADVISED THAT M.T.E. CONSULTANTS INC. CANNOT CERTIFY ANY COMPONENT OF THE SITE WORKS NOT INSPECTED DURING CONSTRUCTION. IT IS THE RESPONSIBILITY OF THE GENERAL CONTRACTOR TO NOTIFY M.T.E. CONSULTANTS INC. PRIOR TO COMMENCEMENT OF CONSTRUCTION TO ARRANGE FOR INSPECTION.



No.	REVISION	DATE	BY
1.	ISSUED FOR SITE PLAN CONTROL	2026-04-01	AXS
2.	REVISION	2026-04-01	YYY



GEODETIC BM	ELEV. =	m
REFER TO SURVEY COMPLETED BY STANTEC, DATED JANUARY 23, 2026		
SITE BENCHMARK	ELEV. =	m
SEE ABOVE		

CLIENT

IRONCLAD DEVELOPMENTS

101-57158 SYMINGTON RD 20E
SPRINGFIELD, MB

319 HUNTMAR DRIVE
STITTSVILLE, ON

DRAWING

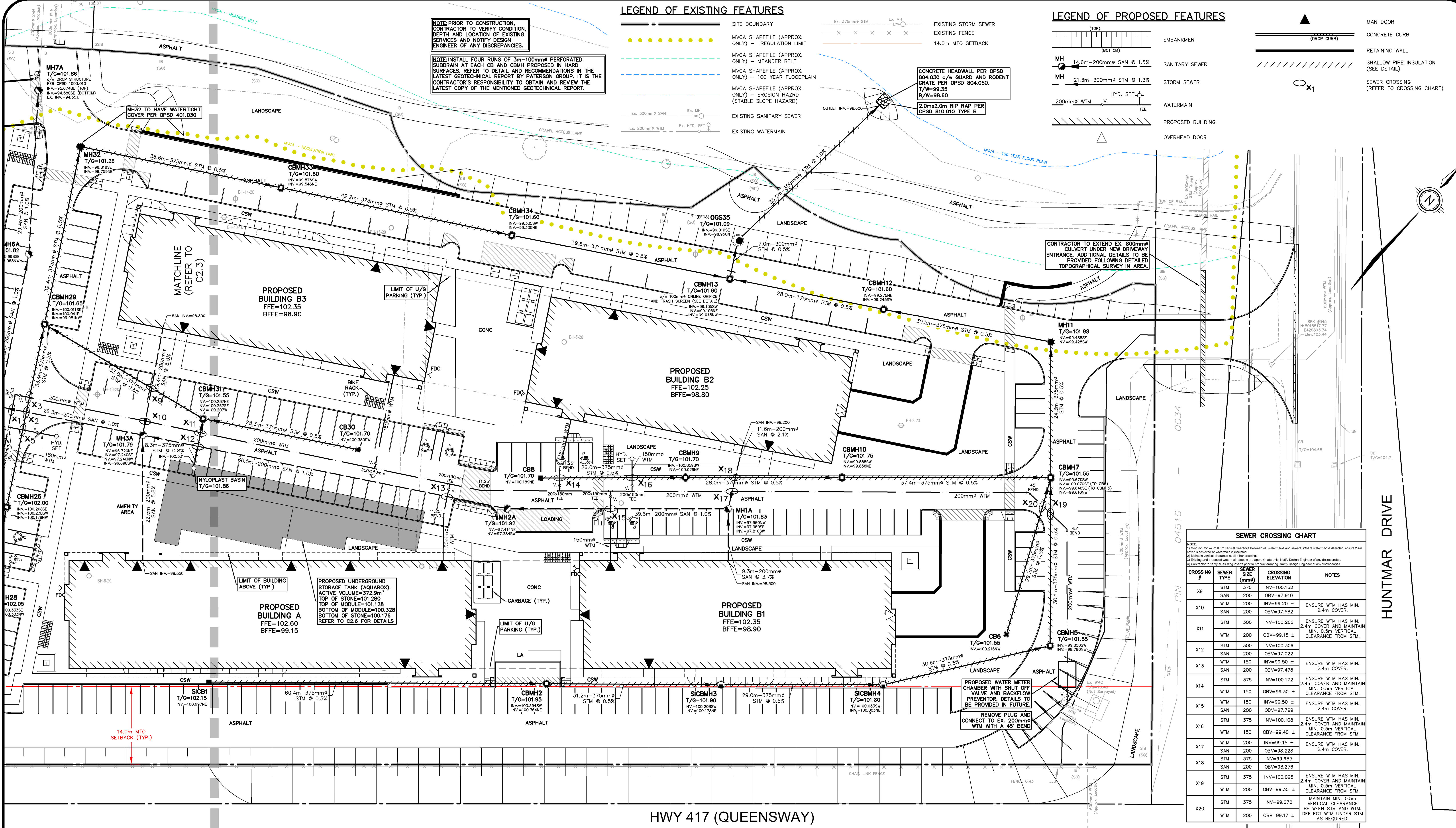
PRELIMINARY SITE SERVICING PLAN 1

Design By: DXN/LEI
Checked By: DAC
Date: 2026-02-12

Project Manager: A. SAWATSKY
Project No: 65860_001
Drawing No: C2.3

Scale: 1:300
Sheet 5 of 8

MTE File Path: P:\165860_01\165860_001-C2



CROSSING #	SEWER TYPE	SEWER SIZE (mm)	CROSSING ELEVATION	NOTES
X9	STM	375	INV=100.152	
X10	SAN	200	OBV=97.910	ENSURE WTM HAS MIN. 2.4m COVER.
	WTM	200	INV=99.20 ±	
X11	SAN	200	OBV=97.582	ENSURE WTM HAS MIN. 2.4m COVER.
	WTM	300	INV=100.286	ENSURE WTM HAS MIN. 0.5m VERTICAL CLEARANCE FROM STM.
X12	STM	300	OBV=99.15 ±	
	SAN	200	OBV=97.022	
X13	STM	150	INV=99.50 ±	ENSURE WTM HAS MIN. 2.4m COVER.
	SAN	200	OBV=97.478	
X14	STM	375	INV=100.172	ENSURE WTM HAS MIN. 2.4m COVER AND MAINTAIN MIN. 0.5m VERTICAL CLEARANCE FROM STM.
	WTM	150	OBV=99.30 ±	
X15	WTM	150	INV=99.50 ±	ENSURE WTM HAS MIN. 2.4m COVER.
	SAN	200	OBV=97.799	
X16	STM	375	INV=100.108	ENSURE WTM HAS MIN. 2.4m COVER AND MAINTAIN MIN. 0.5m VERTICAL CLEARANCE FROM STM.
	WTM	150	OBV=99.40 ±	
X17	WTM	200	INV=99.15 ±	ENSURE WTM HAS MIN. 2.4m COVER.
	SAN	200	OBV=98.228	
X18	STM	375	INV=99.985	
	SAN	200	OBV=98.276	
X19	STM	375	INV=100.095	ENSURE WTM HAS MIN. 2.4m COVER AND MAINTAIN MIN. 0.5m VERTICAL CLEARANCE FROM STM.
	WTM	200	OBV=99.30 ±	
X20	STM	375	INV=99.670	MAINTAIN MIN. 0.5m VERTICAL CLEARANCE BETWEEN STM AND WTM. DEFLECT WTM UNDER STM AS REQUIRED.
	WTM	200	OBV=99.17 ±	

NOTE:

- PROPERTY LINE IS APPROXIMATE ONLY AND SHOULD NOT BE USED FOR DETERMINING SETBACKS OR LAYOUT.
- EXISTING TOPOGRAPHICAL INFORMATION PROVIDED BY STANTEC, DATED JANUARY 23, 2026.
- ALL MVCA LINEWORK SHOWN ON THIS PLAN IS TAKEN FROM SHAPEFILE PROVIDED BY STANTEC AND IS APPROXIMATE ONLY.
- INVERTS DENOTED WITH "±" ARE TAKEN FROM AS-BUILT PLAN AND PROFILE DRAWINGS COMPLETED BY IBI GROUP, DATED OCTOBER 7, 2015, AND GENERAL PLAN OF SERVICES PLAN PREPARED BY IBI GROUP, DATED AUGUST 21, 2013 AND ARE CONSIDERED APPROXIMATE ONLY. CONTRACTOR TO FIELD VERIFY AND REPORT ANY DISCREPANCIES TO ENGINEER.
- THIS PLAN IS PART OF A SET OF PLANS WHICH COMPRISE OF THE FOLLOWING: C1.1, C2.0, C2.1, C2.2, C2.3, C2.4, C2.5 AND C2.6.

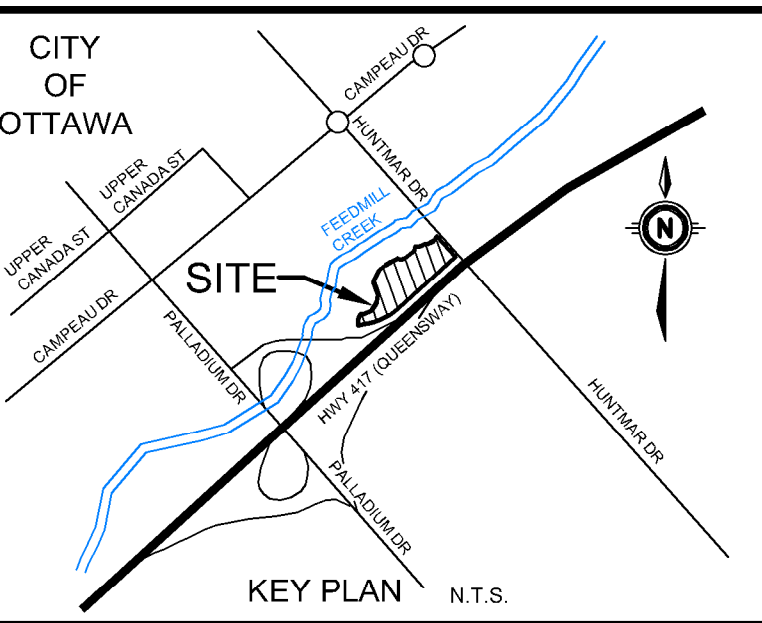
NOTE TO CONTRACTOR:

DO NOT SCALE DRAWINGS.

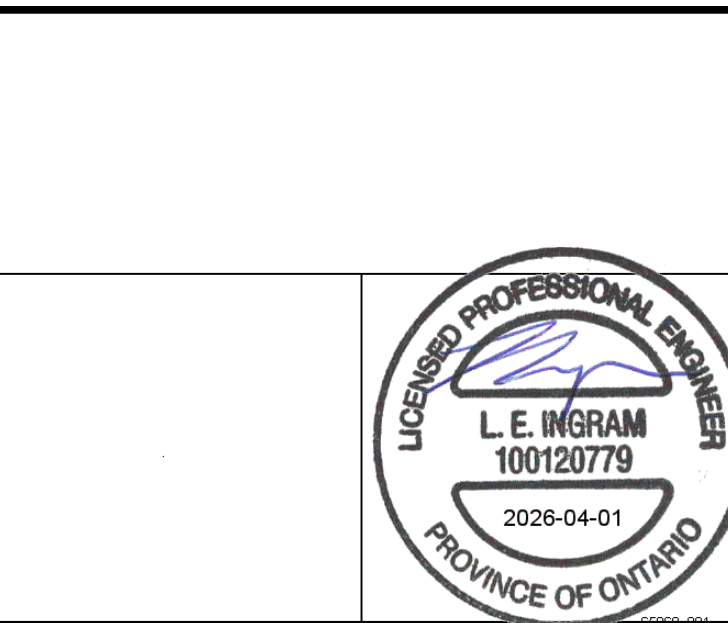
CONTRACTORS MUST CHECK AND VERIFY ALL DIMENSIONS AND REPORT ANY DISCREPANCIES TO THE ENGINEER BEFORE PROCEEDING WITH THE WORK.

ALL DRAWINGS REMAIN THE PROPERTY OF THE ENGINEER AND SHALL NOT BE REPRODUCED OR REUSED WITHOUT THE ENGINEER'S WRITTEN PERMISSION.

THE OWNER/ARCHITECT/CONTRACTOR IS ADVISED THAT M.T.E. CONSULTANTS INC. CANNOT CERTIFY ANY COMPONENT OF THE SITE WORKS NOT INSPECTED DURING CONSTRUCTION. IT IS THE RESPONSIBILITY OF THE GENERAL CONTRACTOR TO NOTIFY M.T.E. CONSULTANTS INC. PRIOR TO COMMENCEMENT OF CONSTRUCTION TO ARRANGE FOR INSPECTION.



2.			
1.	ISSUED FOR SITE PLAN CONTROL	AXS	2026-04-01
No.	REVISION	BY	YYYY-AMM-DD



GEODEIC BM ELEV. = m
REFER TO SURVEY COMPLETED BY STANTEC, DATED JANUARY 23, 2026

SITE BENCHMARK ELEV. = m
SEE ABOVE

CLIENT
IRONCLAD DEVELOPMENTS
101-51758 SYMINGTON RD 20E SPRINGFIELD, MB

319 HUNTMAR DRIVE
STITTSVILLE, ON

DRAWING
PRELIMINARY SITE SERVICING PLAN 2

Design By: DXN/LEI Project Manager: A. SAWATSKY
Checked By: DAC Project No: 65860_001
Date: 2026-02-12 Drawing No: C2.4
1:300 Sheet 6 of 8

April 1, 2026 - 4:16:31 PM - Plotted By: Gemma Cabral-Coutinho