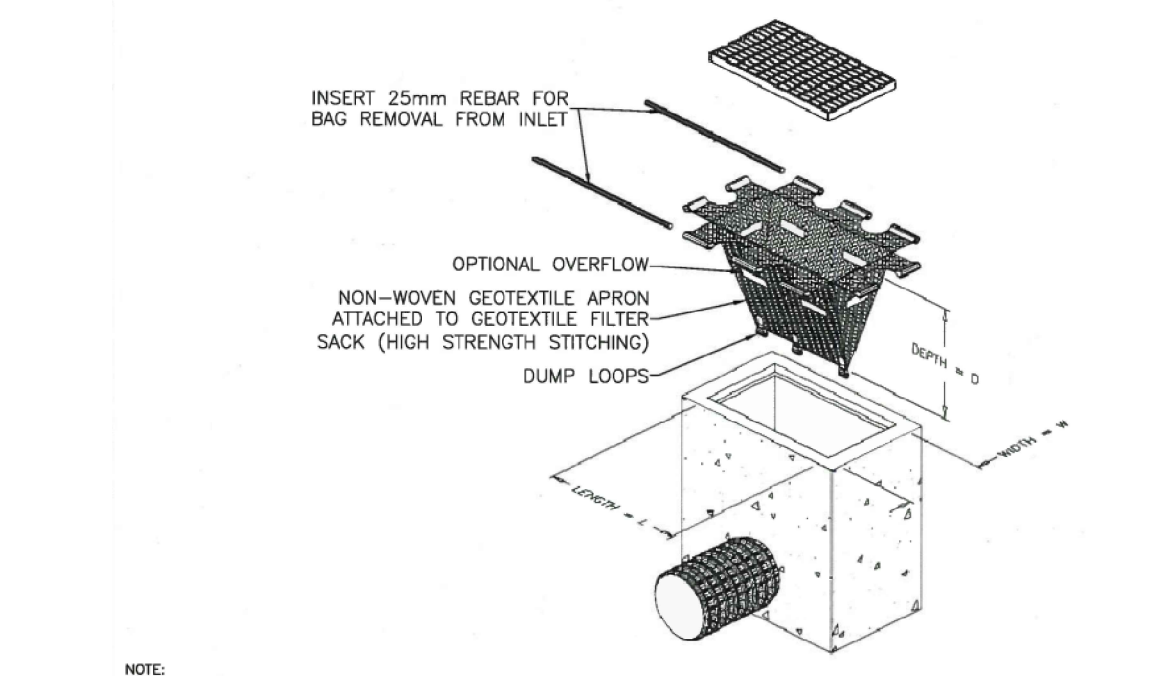


- GENERAL NOTES**
1. VERIFY ALL DIMENSIONS PRIOR TO CONSTRUCTION.
 2. DO NOT SCALE DRAWINGS.
 3. REPORT ALL DISCOVERIES OF ERRORS, OMISSIONS OR DISCREPANCIES TO THE DESIGN ENGINEER AS APPLICABLE.
 4. USE ONLY LATEST REVISED DRAWINGS OR THOSE THAT ARE MARKED "ISSUED FOR CONSTRUCTION".
 5. DESIGN AND CONSTRUCTION OF THIS PROJECT SHALL COMPLY WITH THE PROVINCIAL AND LOCAL BUILDING CODES LATEST EDITION.
 6. ALL WORKS AND MATERIALS USED SHALL COMPLY AS REQUIRED BY THE BUILDING CODE LATEST EDITION.
 7. THIS DRAWING SHALL BE READ IN CONJUNCTION WITH ALL RELEVANT DRAWINGS & SPECIFICATIONS.
 8. EVERYTHING IS TO BE CONSIDERED NEW UNLESS SPECIFIED EXISTING OTHERWISE.

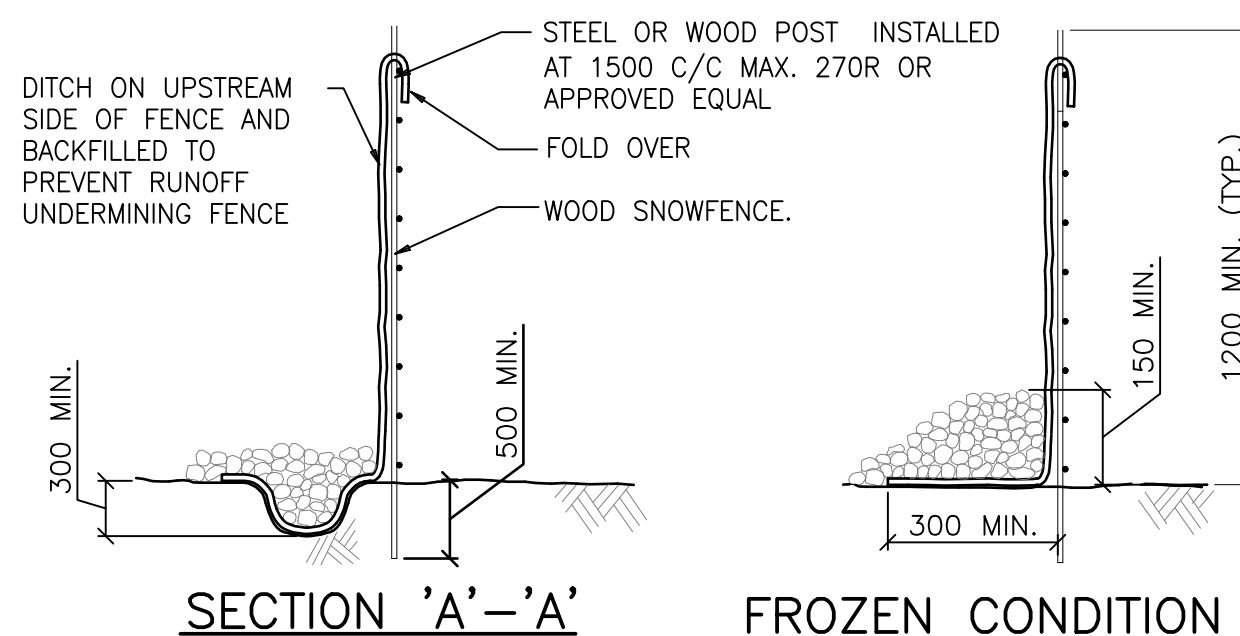
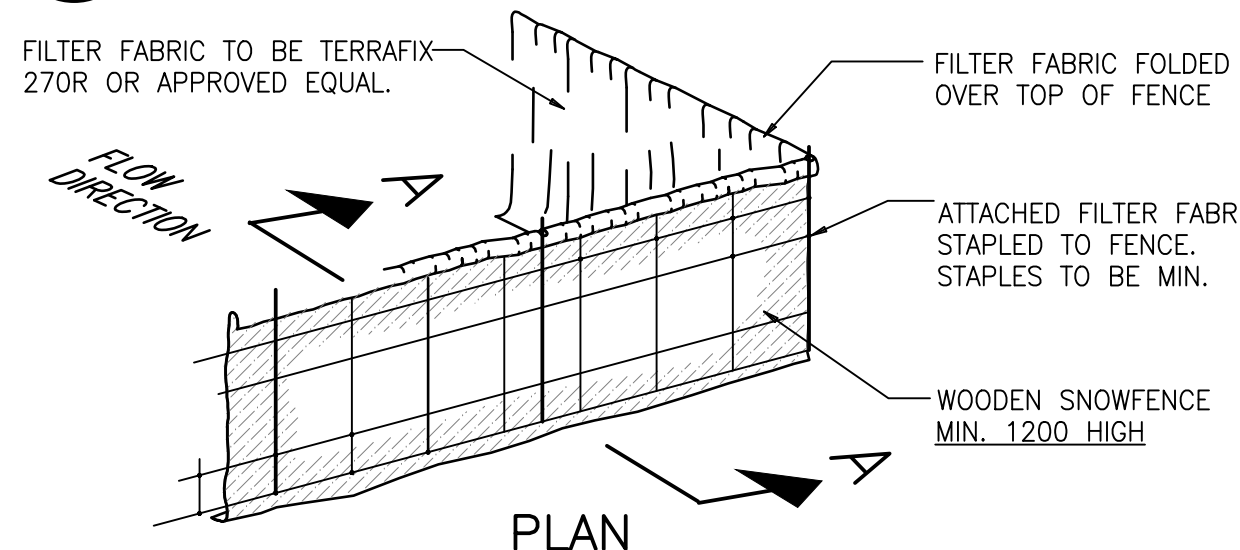
1 EROSION AND SEDIMENT CONTROL PLAN
P-303 SCALE: 1:200

EROSION & SEDIMENT CONTROL NOTES:

1. THE OWNER IS RESPONSIBLE FOR OBTAINING ALL NECESSARY APPROVALS FROM THE CITY AND EXTERNAL AGENCIES PRIOR TO ANY SITE ALTERATION ACTIVITY.
2. PRIOR TO COMMENCEMENT OF ANY ON-SITE WORK/SOIL STRIPPING, EROSION AND SEDIMENT CONTROL (ESC) MEASURES, AS PER ACCEPTED SITE ALTERATION PLANS, MUST BE INSTALLED AND APPROVED BY THE DIRECTOR OF ENGINEERING. ADDITIONAL ESC MEASURES, IF REQUIRED, SHALL BE INSTALLED AS DIRECTOR OF ENGINEERING. THE ESC MEASURES SHALL REMAIN IN PLACE UNTIL DIRECTOR OF ENGINEERING FOR THEIR REMOVAL.
3. TREES ARE TO BE PRESERVED AS PER THE ACCEPTED TREE PRESERVATION PLANS.
4. NO CONSTRUCTION ACTIVITIES OR MACHINERY SHALL BE ALLOWED BEYOND THE SILT/SNOW FENCE OR LIMITS OF THE SUBDIVISION.
5. THE CONTRACTOR IS RESPONSIBLE TO IMPLEMENT DUST CONTROL MEASURES AND CONSTRUCTION PRACTICE GUIDELINES AS APPROVED BY THE CITY.
6. THE CONTRACTOR IS RESPONSIBLE FOR MAINTAINING ALL ESC MEASURES IN WORKING CONDITION AT ALL TIMES TO THE SATISFACTION OF THE DIRECTOR OF ENGINEERING. THE CONTRACTOR SHALL ROUTINELY INSPECT ALL ESC MEASURES AT A MINIMUM OF ONCE A WEEK AND AFTER EACH RAINFALL EVENT GREATER THAN 10mm TO ENSURE THE ESC MEASURES ARE IN PROPER WORKING CONDITIONS. ANY DAMAGES MUST BE REPAIRED WITHIN 24 HOURS.
7. ALL CONSTRUCTION VEHICLES MUST ENTER AND EXIT THE SITE ONLY FROM THE APPROVED ACCESS ROUTE(S) AS SHOWN ON THE ACCEPTED SITE ALTERATION PLANS.
8. CATCHBASIN SEDIMENT CONTROL MEASURES ARE TO BE INSTALLED IMMEDIATELY AFTER INSTALLATION OF CATCHBASINS.
9. ALL DISTURBED GROUND LEFT INACTIVE FOR OVER 30 DAYS SHALL BE VEGETATED, SUBJECT TO WEATHER CONDITIONS, BY SEEDING OR APPROVED EQUIVALENT TO THE SATISFACTION OF THE DIRECTOR OF ENGINEERING.
10. ALL SOIL STOCKPILES IF REMAINING ON SITE FOR MORE THAN 30 DAYS SHALL BE VEGETATED, SUBJECT TO WEATHER CONDITIONS, BY SEEDING OR APPROVED EQUIVALENT TO THE SATISFACTION OF THE DIRECTOR OF ENGINEERING.
11. STREET SWEEPING/CATCHBASIN CLEANING PROGRAM SHALL BE IMPLEMENTED UPON COMPLETION OF BASE ASPHALT TO THE SATISFACTION OF THE DIRECTOR OF ENGINEERING.
12. ALL SOIL STOCKPILES SHALL BE SURROUNDED WITH SEDIMENT CONTROL FENCE. THE MAXIMUM SIDE SLOPES FOR STOCKPILES SHALL BE 1.5 (H) TO 1.0 (V). THE MAXIMUM HEIGHT OF STOCKPILE SHALL NOT EXCEED 3.0 m.
13. THE CONTRACTOR SHALL ENDEAVOR TO PREVENT MUD TRUCKING ONTO EXISTING RIGHT-OF-WAY AND SHALL PROVIDE CLEAN UP AT HIS/HER OWN EXPENSE AS DIRECTED BY THE DIRECTOR OF ENGINEERING.
14. THE CONTRACTOR SHALL CARE AND CONTROL SPILLS, FLUIDS, AND MATERIALS DURING CONSTRUCTION TO MINIMIZE RISK TO THE ENVIRONMENT.

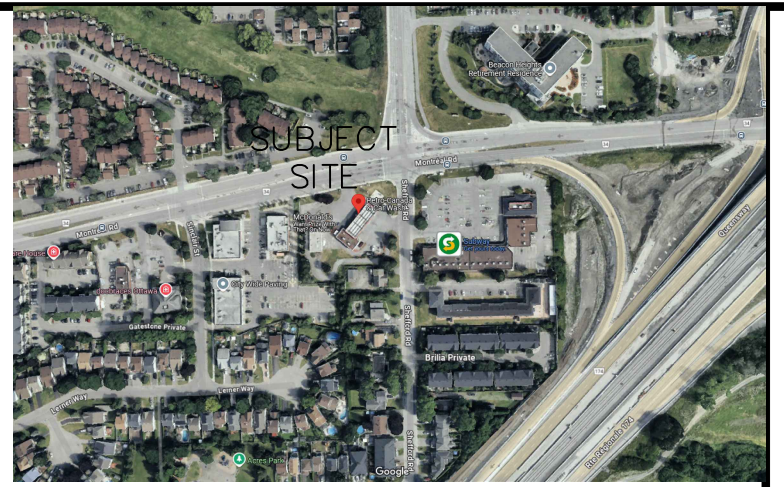


2 TYP. CATCHBASIN SEDIMENT PROTECTION DETAIL
P-303 SCALE: NTS



3 SEDIMENT CONTROL FENCE
P-303 SCALE: NTS

4 TYP. MUDMAT DETAIL
P-303 SCALE: NTS



KEY PLAN
NTS

PLAN OF SURVEY OF
BLOCK 60 AND PART OF BLOCK 59
REGISTERED PLAN 4M-916
AND PART OF LOT 16
CONCESSION 1 (OTTAWA FRONT)
(GEOGRAPHIC TOWNSHIP OF GLOUCESTER)
CITY OF OTTAWA

BEARING
BEARINGS SHOWN HEREON ARE GRID AND ARE REFERRED TO THE WESTERLY LIMIT OF SHEFFORD ROAD AS DERIVED FROM OBSERVED CONTROL POINTS 'A' AND 'B' AND HAVING A BEARING OF N 21°22'10" W.
GRID BEARINGS ARE 3' MTM ZONE 09, CENTRAL MERIDIAN 76°30' WEST LONGITUDE, NAD83 (CSRS-2010.0).

NOTES
TREE CALIPER'S SHOWN HEREON ARE AS MEASURED BY OUR SURVEY CREW; CROWN DIMENSIONS ARE AS SHOWN ON THE FACE OF PLAN AND CONFIRMED VIA AERIAL REFERENCE DATA. THIS DATA HAS NOT BEEN CONFIRMED OR REVIEWED BY A PROFESSIONAL ARBORIST.

FENCES AND OCCUPATION ARE AS INDICATED ON THIS PLAN OF SURVEY.
OBSERVATIONS TO STRUCTURES ON THE SUBJECT LANDS HAVE BEEN MADE TO THE EXPOSED EXTERIOR CLADDING OF THE STRUCTURES AS SHOWN.

BEARING ROTATION:
FOR BEARING COMPARISONS, A ROTATION OF 00°39'40" COUNTER-CLOCKWISE WAS APPLIED TO PLAN P3.

BENCHMARK
ELEVATIONS SHOWN HEREON ARE GEODETIC AND WERE DERIVED FROM GNSS OBSERVATIONS TO OUR CONTROL NETWORK. ELEVATIONS ARE REFERENCED TO OUR LOCAL BENCHMARK:

LOCAL BENCHMARK:
THE TOP NUT OF A FIRE HYDRANT LOCATED APPROXIMATELY 14m SOUTH OF DRIVEWAY ENTRANCE TO THE SUBJECT LANDS ALONG SHEFFORD ROAD AND HAVING AN ELEVATION OF 67.88. (NAD83; CSRS: v7-2010, GEOD MODEL HT2.0-2002.0)

LEGEND

- EXISTING CATCHBASIN
- EXISTING MANHOLE
- NEW SANITARY MANHOLE
- NEW CATCHBASIN
- NEW C.B./M.H.
- NEW STORM MANHOLE
- PROPERTY LINE
- OVERLAND FLOW
- INLET PROTECTION
- SILT FENCE

REVISION TABLE

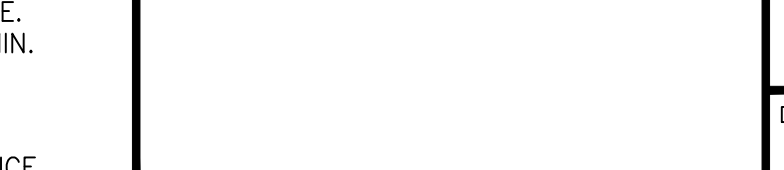
REV.	DESCRIPTION	DRAWN	APP'D.	DATE
1				

ISSUE TABLE

TO	FOR	DATE
SUNCOR	ISSUED FOR REVIEW	16 MAR '26

METRIC
ALL DIMENSIONS ARE IN MILLIMETRES U.N.O. CONTRACTOR TO CHECK/VERIFY ALL DIMENSIONS PRIOR TO COMMENCEMENT OF WORK. ALL DISCREPANCIES TO BE REPORTED TO THE PROJECT DESIGNER. DO NOT SCALE DRAWINGS.

SEAL



CONSULTANT
J + B ENGINEERING INC.
TORONTO: 25 GERRARD ST. E. SUITE 200, WILLOWDALE, ON L2R 9N8 416 229 2908
CALGARY: 60411TH AVE. SW. SUITE 200, CALGARY AB T2R 0E2 403 555 2256

DRAWING TITLE:
EROSION AND SEDIMENT CONTROL PLAN

PROJECT:
2180 MONTREAL RD @SHEFFORD RD
OTTAWA, ON

DRAWN BY: EM
DRAWING SCALE: 1:200
DATE DRAWN: DEC 03 '25
CHECKED BY:
APPROVED BY:

CAD INFO.:
SHEET SIZE D (559 x 864)
CONSULTANT PETRO-CANADA
PROJECT 250344-P-303
PLOT SCALE 1:1
PLOT CONFIGURATION

STD No./OUTLET No. 65004
SHEET No. P303