



# SOUTH MARCH BESS

RE-ISSUED FOR SITE PLAN CONTROL

April 22, 2026

Project Number: 160402040



## LIST OF DRAWINGS

LANDSCAPE DRAWINGS:

- L1 LANDSCAPE PLAN
- L2 ENLARGEMENT: PLANTING PLAN
- L3 LANDSCAPE DETAILS

- Legend**
- PROPERTY LINE
  - ANTICIPATED LIMIT OF PROPOSED TREE CANOPY COVER AFTER FORTY YEARS
  - PROPOSED CONTINUOUS SHRUB PLANTING BED
  - PROPOSED SEEDING
  - HYDRO CORRIDOR EASEMENT

NOT FOR CONSTRUCTION

- Notes**
1. REFER TO SOUTH MARCH BESS STATION TREE CONSERVATION REPORT PREPARED BY HATCH (LATEST VERSION) FOR DETAILS ON TREE REMOVALS AND PROTECTION MEASURES, POTENTIAL IMPACTS TO TREES, AND VEGETATION AREAS TO BE RETAINED / PROTECTED. IT IS ANTICIPATED THAT SEVENTY (70) TREES WILL REQUIRE REMOVAL TO FACILITATE THE CONSTRUCTION OF THE FACILITY ACCESS DRIVE.
  - 1.1. ONE MUNICIPALLY OWNED TREE REMOVAL IS ANTICIPATED AND PROPOSED TO BE COMPENSATED AT A 1:1 RATIO. ADDITIONAL TREE PLANTING SHOWN IS INTENDED TO PROVIDE A VEGETATION SCREEN FOR PROPOSED NOISE WALL AND COMPENSATE ANTICIPATED TREE REMOVALS AT A 1:1 RATIO. REFER TO ACOUSTIC ASSESSMENT REPORT - EVOLUGEN SOUTH MARCH BATTERY ENERGY STORAGE PROJECT.
  2. REFER TO CIVIL ENGINEERING DRAWINGS FOR PROPOSED DESIGN, INCLUDING: HARDSCAPE, GRADING, SITE SERVICING, AND FENCING INFORMATION.
  3. FOR SITE SURVEY INFORMATION, REFER TO SURVEY PREPARED BY TULLOCH GEOMATICS INC., DATED MARCH 11, 2025.
  4. REFER TO THE ENVIRONMENTAL IMPACT STUDY PREPARED BY STANTEC, (LATEST VERSION)
  5. REFER TO GEOTECHNICAL REPORT PREPARED BY HATCH, DATED 2026-02-11.

Revision	By	Appd.	YY.MM.DD	
5	RE-ISSUED FOR SITE PLAN CONTROL	BL	PP	26.04.22
4	RE-ISSUED FOR SITE PLAN CONTROL	BL	PP	26.01.29
3	RE-ISSUED FOR SITE PLAN CONTROL	BL	PP	25.11.07
2	ISSUED FOR ZONING BY-LAW AMENDMENT	BL	PP	25.10.08
1	ISSUED FOR SITE PLAN CONTROL	BL	KP	25.07.11

File Name:	BL	KP	BL	25.06.04
XR_16042040-L-Planting.dwg	Dwn.	Chkd.	Dgn.	YY.MM.DD

Permit-Seal

Client/Project  
**EVOLUGEN**

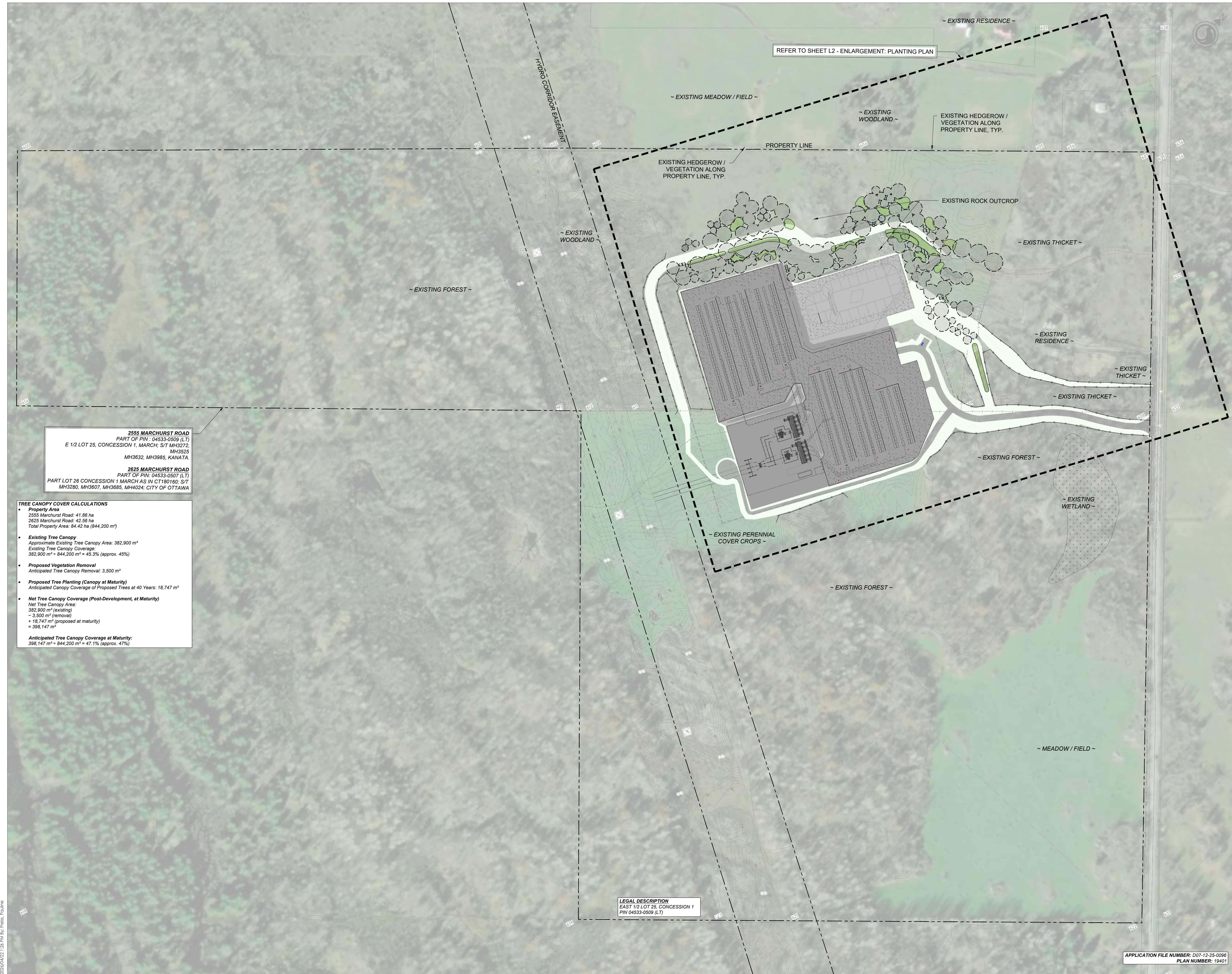
SOUTH MARCH BESS  
2555 AND 2625 MARCHURST RD, OTTAWA

Title  
**LANDSCAPE PLAN**

Project No.  
16042040

Scale  
1:2000

Drawing No. Sheet Revision  
1 of 3



**2555 MARCHURST ROAD**  
PART OF PIN: 04533-0509 (LT)  
E 1/2 LOT 25, CONCESSION 1, MARCH, S/T MH3272, MH3625, MH3632, MH3985, KANATA.

**2625 MARCHURST ROAD**  
PART OF PIN: 04533-0507 (LT)  
PART LOT 26 CONCESSION 1 MARCH AS IN CT180160; S/T MH3280, MH3607, MH3685, MH4024, CITY OF OTTAWA

**TREE CANOPY COVER CALCULATIONS**

**Property Area**  
2555 Marchurst Road: 41.86 ha  
2625 Marchurst Road: 42.96 ha  
Total Property Area: 84.42 ha (844,200 m<sup>2</sup>)

- **Existing Tree Canopy**  
Approximate Existing Tree Canopy Area: 382,900 m<sup>2</sup>  
Existing Tree Canopy Coverage: 382,900 m<sup>2</sup> ÷ 844,200 m<sup>2</sup> = 45.3% (approx. 45%)
- **Proposed Vegetation Removal**  
Anticipated Tree Canopy Removal: 3,500 m<sup>2</sup>
- **Proposed Tree Planting (Canopy at Maturity)**  
Anticipated Canopy Coverage of Proposed Trees at 40 Years: 18,747 m<sup>2</sup>
- **Net Tree Canopy Coverage (Post-Development, at Maturity)**  
Net Tree Canopy Area:  
382,900 m<sup>2</sup> (existing)  
- 3,500 m<sup>2</sup> (removal)  
+ 18,747 m<sup>2</sup> (proposed at maturity)  
= 398,147 m<sup>2</sup>

**Anticipated Tree Canopy Coverage at Maturity:**  
398,147 m<sup>2</sup> ÷ 844,200 m<sup>2</sup> = 47.1% (approx. 47%)

**LEGAL DESCRIPTION**  
EAST 1/2 LOT 25, CONCESSION 1  
PIN 04533-0509 (LT)

APPLICATION FILE NUMBER: D07-12-25-0096  
PLAN NUMBER: 19401



