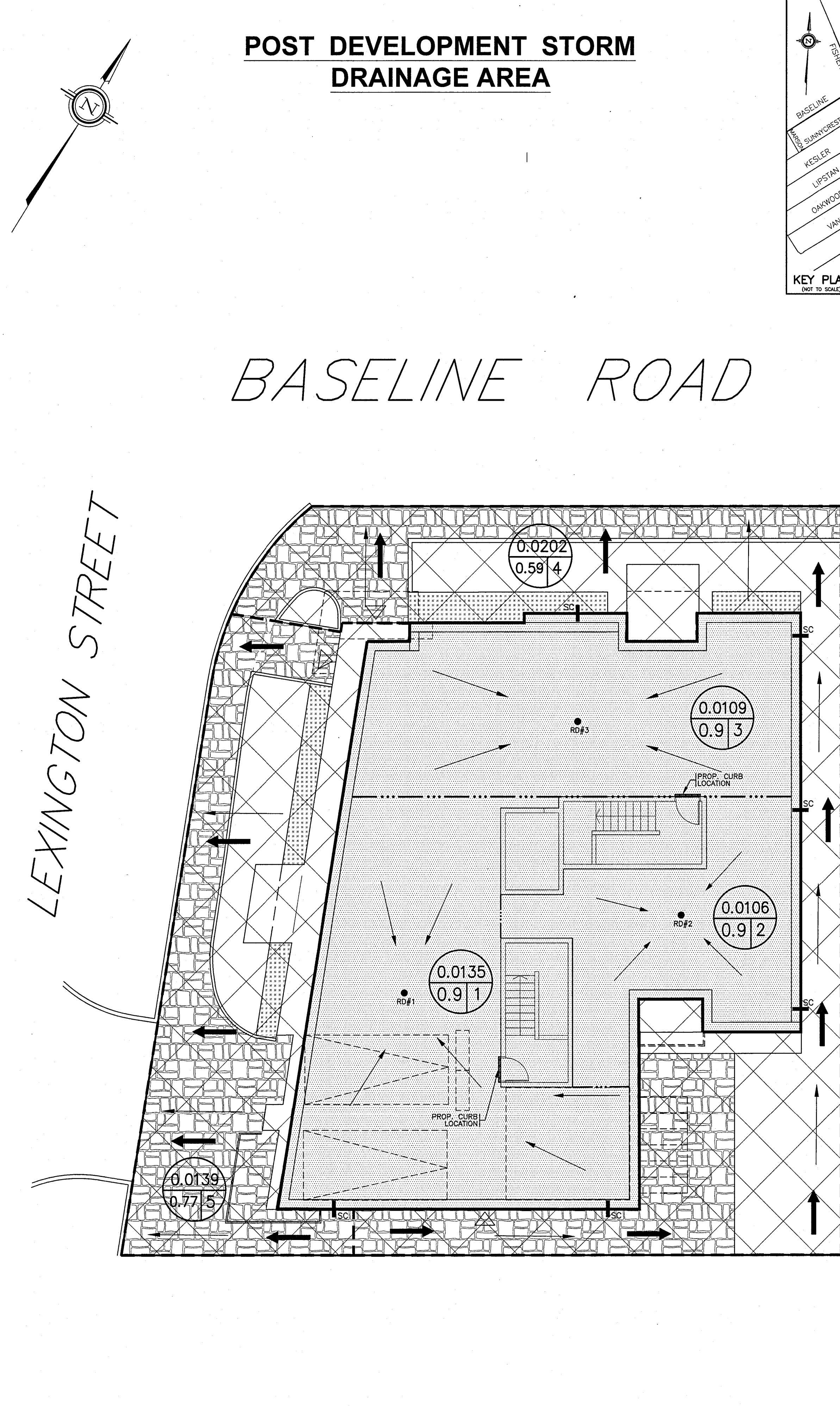
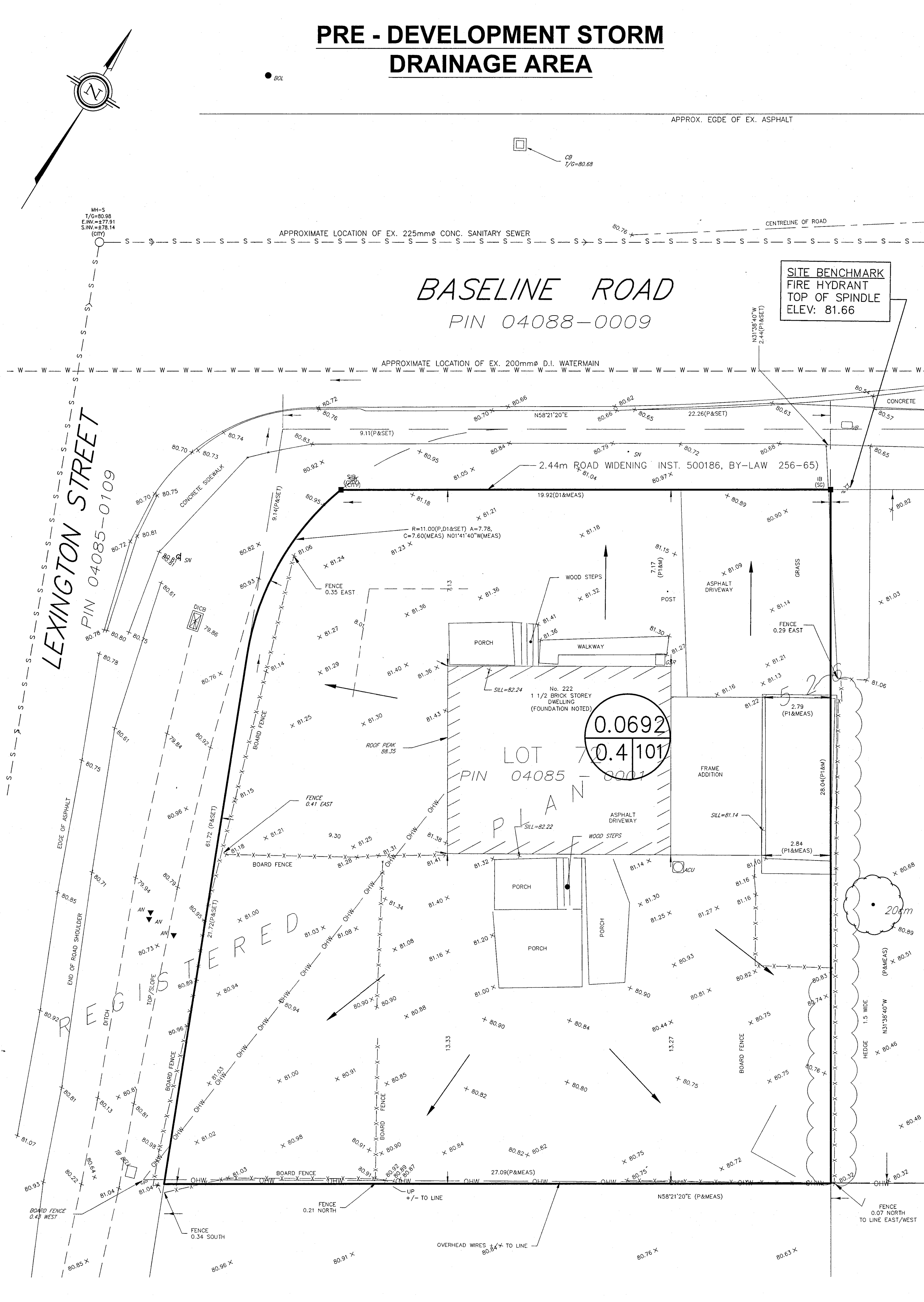
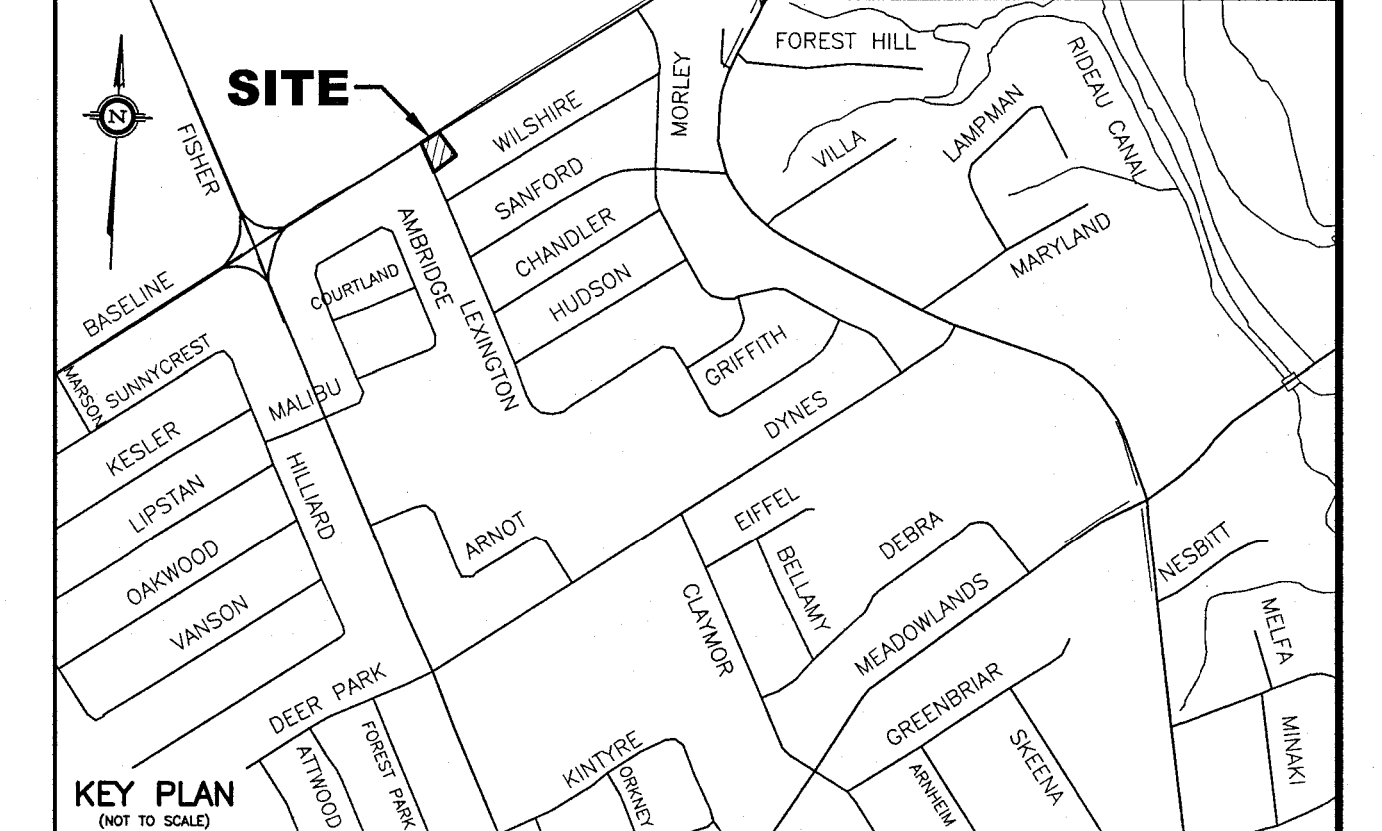


**PRE - DEVELOPMENT STORM DRAINAGE AREA**

**POST DEVELOPMENT STORM DRAINAGE AREA**



- LEGEND**
- RD#1 PROPOSED ROOF DRAIN NUMBER AND LOCATION
  - SC PROPOSED ROOF SCUPPER LOCATION
  - PROPOSED HIGH RIDGE LINE
  - 0.03 / 0.9 1 DRAINAGE AREA IN HECTARES / DRAINAGE NODE NUMBER
  - COEFFICIENT OF RUNOFF
  - ▨ UN-CONTROLLED DRAINAGE AREA
  - ▩ CONTROLLED DRAINAGE AREA
  - DENOTES PROPOSED OVERLAND FLOW ROUTE

- NOTES**
- NODE #1, NODE #2 AND NODE #3 REPRESENTS BUILDING ROOF AREA (SWM CONTROLLED AREA)
  - NODE #4 REPRESENTS UNCONTROLLED DRAINAGE AREA
  - NODE #101 REPRESENTS PRE-DEVELOPMENT DATA.

*G. Wildman*

**GERALDINE WILDMAN**  
 MANAGER, DEVELOPMENT REVIEW SOUTH  
 PLANNING, DEVELOPMENT AND BUILDING SERVICES  
 DEPARTMENT, CITY OF OTTAWA

**APPROVED**  
 By wildmange at 12:53 pm, Apr 21, 2026

No.	REVISION	DATE	BY
2	REVISIONS AS PER PLANNERS REVIEW COMMENTS OF SEPTEMBER 29, 2025	09/30/25	TLM
1	REVISIONS AS PER ARCHITECT'S LATEST REVISED SITE PLAN RECEIVED ON JULY 14, 2025 AND CITY'S REVIEW COMMENTS OF JUNE 10, 2025	09/26/25	TLM

FOR SPC APPLICATION

**SCALE**

0 1 3 5m

1:100  
HORIZONTAL

VERTICAL

DESIGN	T.L.M.
CHECKED	T.L.M.
DRAWN BY	P.M.
CHECKED	T.L.M.
APPROVED	T.L.M.

PROJECT

**222 BASELINE ROAD**  
 PART OF LOT 72  
 REGISTERED PLAN 526  
 CITY OF OTTAWA

DRAWING TITLE

**STORM DRAINAGE AREA PLAN**

PROJECT No.	DATE	DRAWING No.
824-74	SEPTEMBER 2024	D-1