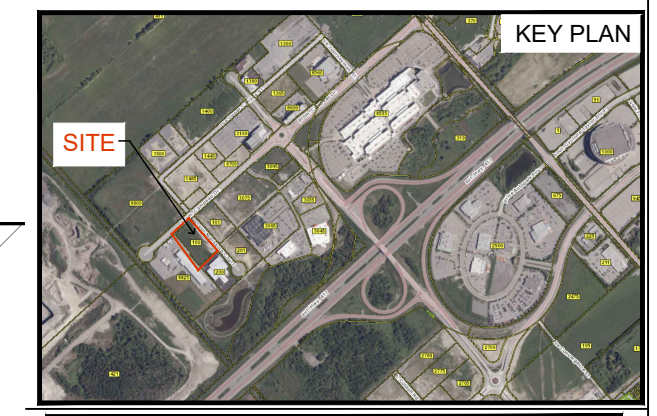
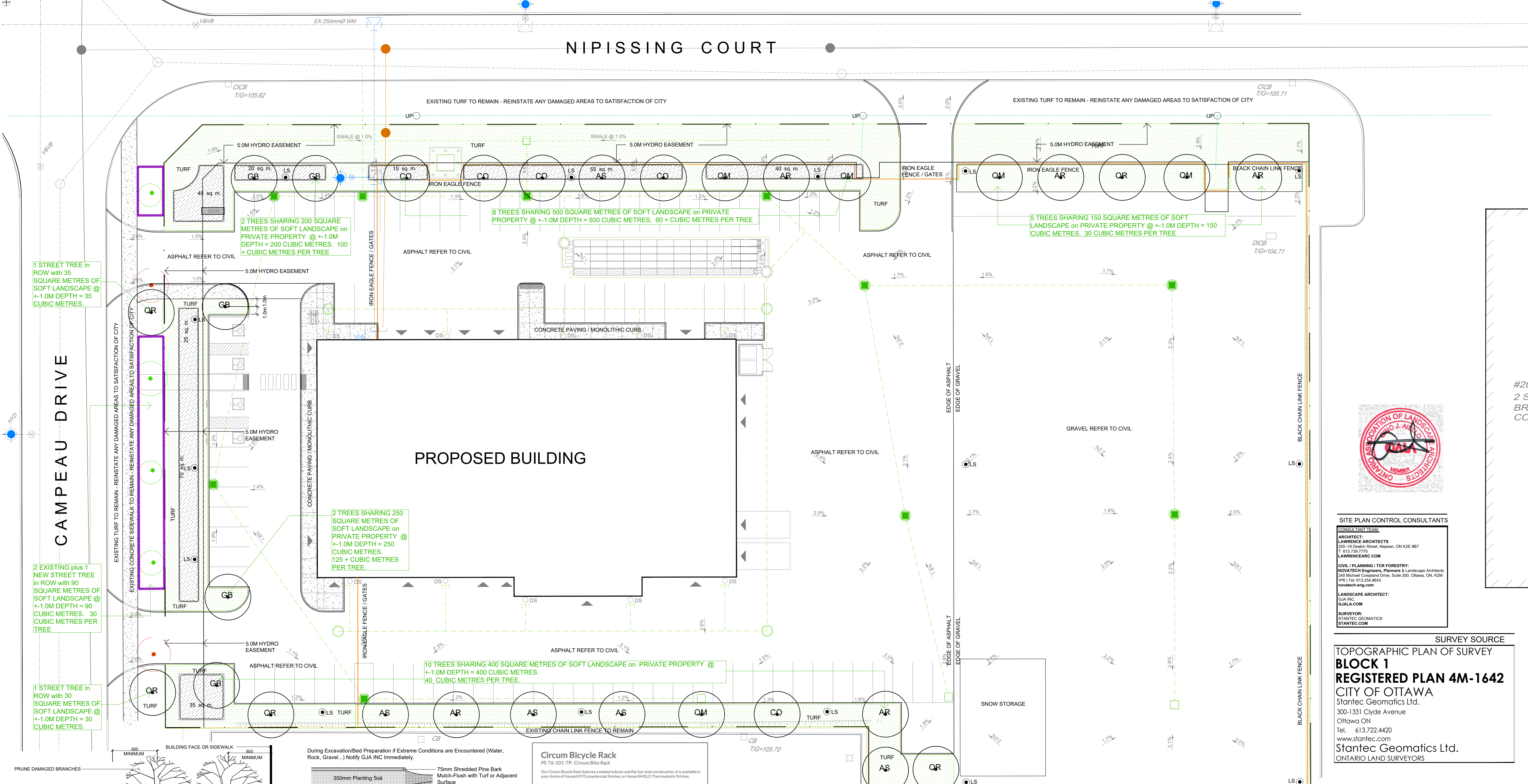


NIPISSING COURT

Drawing Remains the Property of Copyright Reserved by GJA INC. Do Not Use or Reproduce Without Approval of Gino J. Aiello.
 | PLANTING MIX TO BE APPROVED BY LANDSCAPE ARCHITECT PRIOR TO PLANTING ALL MATERIALS & WORK TO BE MAINTAINED UNTIL FINAL ACCEPTANCE. INCLUDE 1 YEAR WARRANTY FROM DATE OF FINAL ACCEPTANCE | REFER TO CIVIL ENGINEER'S DRAWING FOR ELEVATIONS / GRADING |
 The Landscape Plan is to be read in conjunction with the grading, servicing, site and survey plan. All trees to be preserved on or directly adjacent to the site will be protected | Plant material are to be installed a minimum of 3.0m away from any part of any hydro transformer, 3.0m corridor between a fire hydrant and the curb, a 2.5m radius beside or behind a fire hydrant, 2.0m from any servicing/utility line or structure |



LEGEND

- Existing Tree to Remain
- Protection for Existing Trees
- Existing Tree to Remove

LANDSCAPE PROPOSED

- Deciduous Tree
- Planting Bed
- Shrub Planting
- Turf
- Concrete
- Concrete Monolithic Curb
- 2.0m Ht. Fence
- 2.0m Ht. Fence
- Rack for 2 Bikes
- Anchor to Concrete



SITE PLAN CONTROL CONSULTANTS

CONSULTANT TEAM

ARCHITECT:
LAWRENCE ARCHITECTS
250-18 Deakin Street, Nepean, ON K2E 8B7
T: 613.739.7770
lawrencearch.com

CIVIL PLANNING / TCR FORESTRY:
NOVATECH Engineers, Planners & Landscape Architects
260 Michael Cowland Drive, Suite 200, Ottawa, ON K2M 1P5 | Tel: 613.224.9643
novatech-eng.com

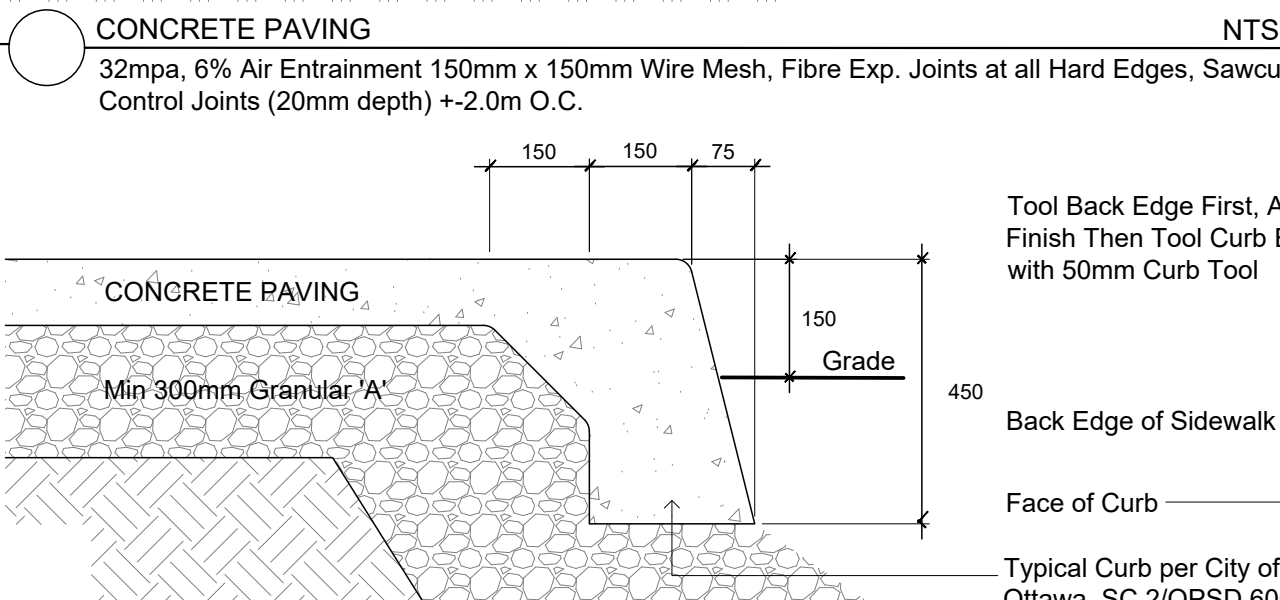
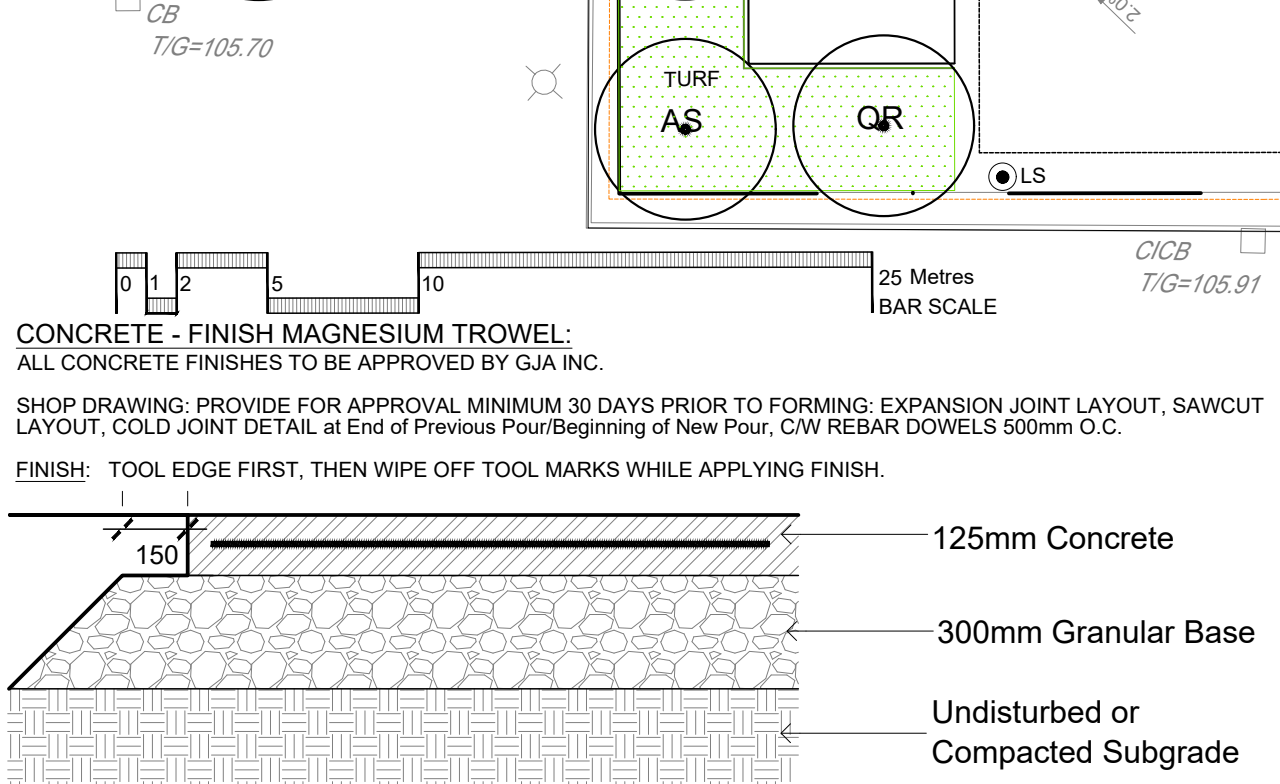
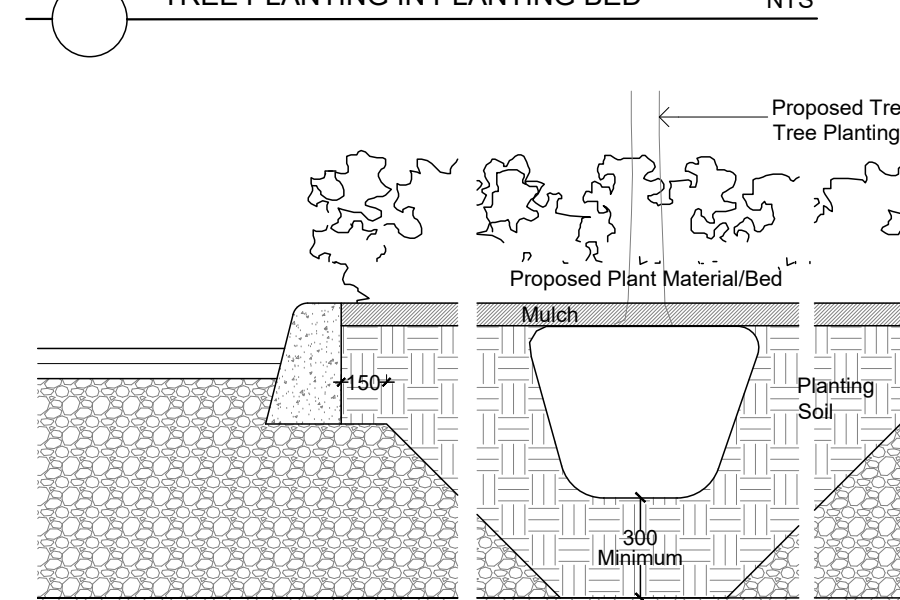
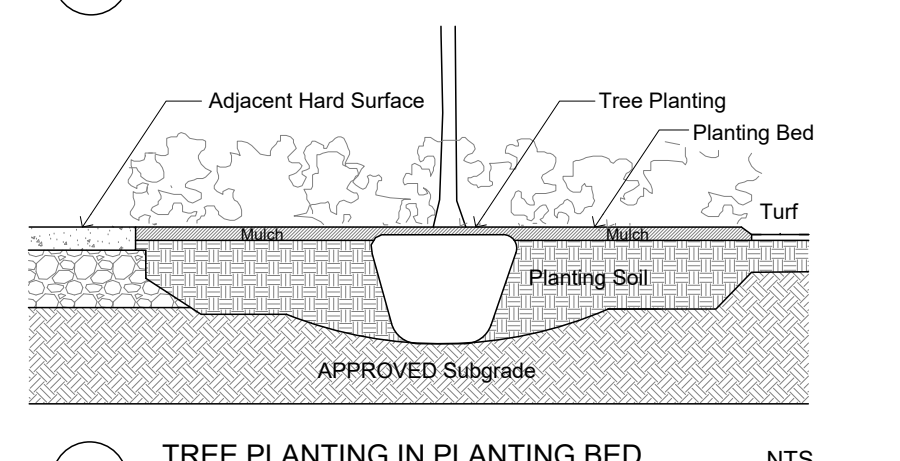
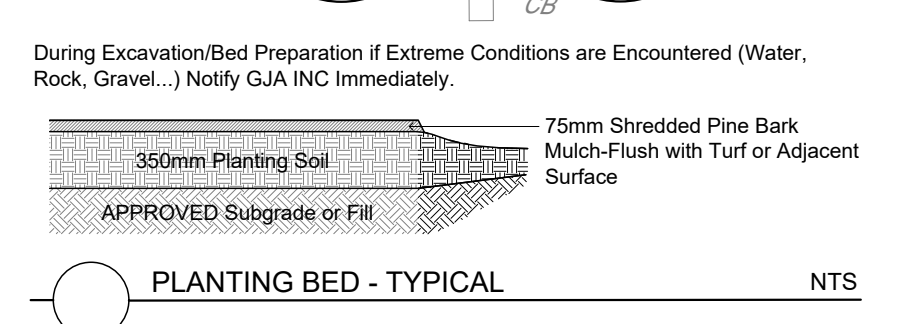
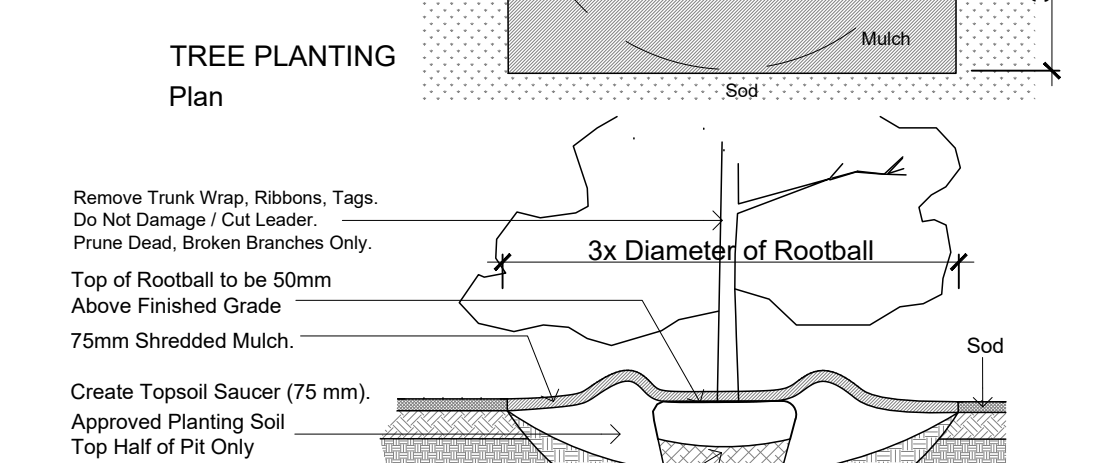
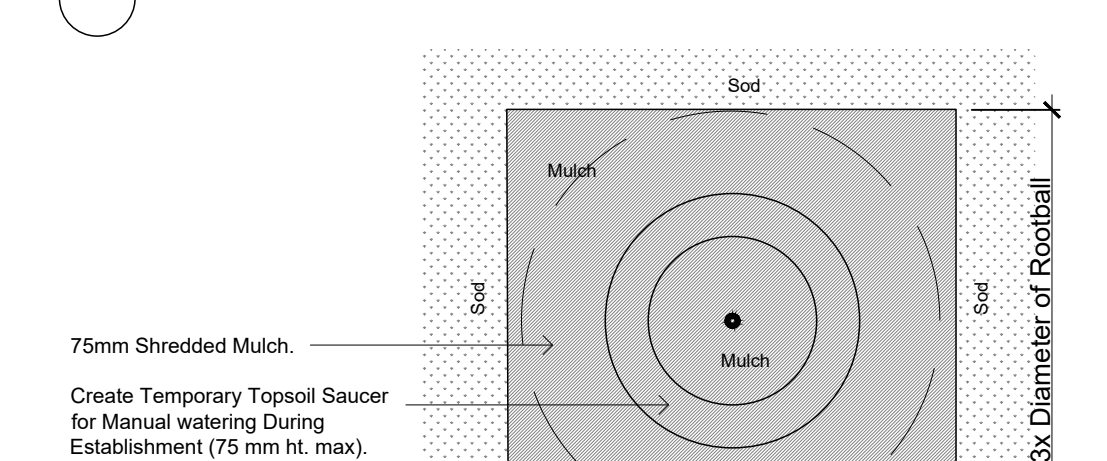
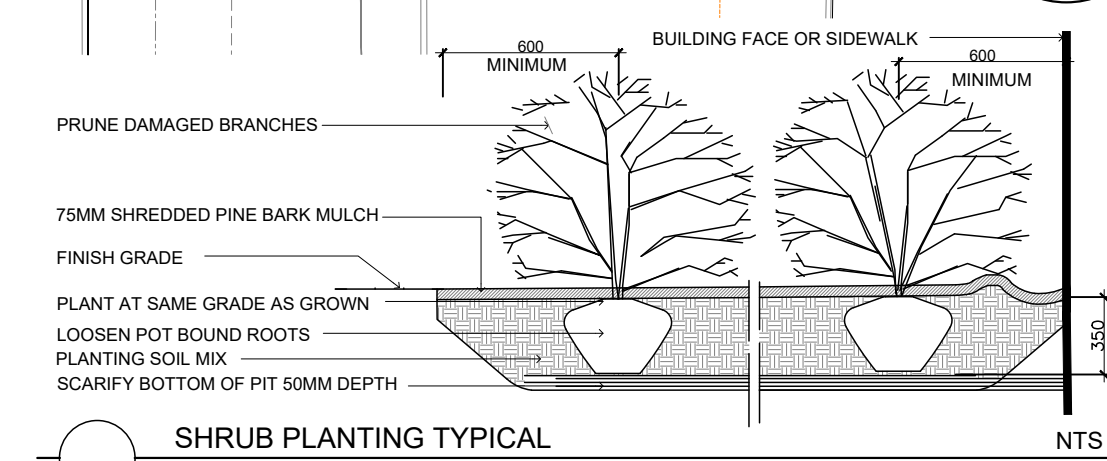
LANDSCAPE ARCHITECT:
GJA INC.
GJALA.COM

SURVEYOR:
STANTEC GEOMATICS
STANTEC.COM

SURVEY SOURCE

TOPOGRAPHIC PLAN OF SURVEY
BLOCK 1
REGISTERED PLAN 4M-1642
 CITY OF OTTAWA
 Stanlec Geomatics Ltd.
 300-1331 Clyde Avenue
 Ottawa ON
 Tel. 613.722.4420
 www.stanlec.com
 Stanlec Geomatics Ltd.
 ONTARIO LAND SURVEYORS

CAMPEAU DRIVE



TREE SCHEDULE / TREE CANOPY CALCULATIONS

TREE SCHEDULE - MYERS CARSTAR 100 NIPISSING COURT KANATA

CODE	QTY	BOTANICAL NAME	COMMON NAME	B&B SPECIMEN	NATIVE to CANADA	FORECASTED SPREAD as per City of Ottawa Expiry	Contribution/Tree in Square Metres	Total Canopy Cover
						DIAMETER	RADIUS	
AR	5	Acer rubrum	Red Maple	50mm cal	YES	10.0M	5.0M	78.5
AS	5	Acer saccharum	Sugar Maple	50mm cal	YES	14.0M	7.0M	154
CO	5	Celtis occidentalis	Common Hackberry	50mm cal	YES	14.0M	7.0M	154
GB	5	Ginkgo biloba	Maidenhair Tree	50mm cal	YES	10.0M	5.0M	78.5
QM	5	Quercus macrocarpa	Bur Oak	50mm cal	YES	14.0M	7.0M	154
QR	5	Quercus rubra	Red Oak	50mm cal	YES	14.0M	7.0M	154
TOTAL	30							386.5
TOTAL FORECASTED CANOPY COVER IN SQUARE METRES								386.5
SITE AREA for TOTAL FORECASTED CANOPY COVER as Percentage of Site Area								12135
								31.85%

SHRUB PLANTING 350 Square Metres (Average Spacing 0.9m) +1.4 plants/sq. m

Code	Qty	Botanical Name	Common Name	Size	Condition	NATIVE
HK	150	Hypericum kalimianum	Kalm St. John's Wort	30cm	Pot	YES
HP	75	Hypericum prolificum	Shrubby St. John's Wort	40cm	Pot	YES
SB	100	Spiraea bumalda 'Dart's Red'	Dart's Red Spirea	40cm	Pot	YES
SB	75	Spiraea bumalda 'Magic Carpet'	Magic Carpet Spirea	40cm	Pot	YES
SB	75	Spiraea bumalda 'Anthony Waterer'	Anthony Waterer Spirea	40cm	Pot	YES
PM	25	Pinus mugo var. pumilio	Mugho Pine	30cm spr	Pot	YES
TCm	25	Taxus cuspidata 'Monlois'	Emerald Spreader Yew	30cm spr	Pot	YES
AU	50	Arctostaphylos uva ursi	Bearberry	30cm spr	Pot	YES
GM	50	Geranium macrorrhizum	Bigroot Geranium	9 cm Pot		
GR	50	Geranium psilostemon 'Gerwat'	Rozanne Geranium	9 cm Pot		
PV	25	Panicum virgatum	Switch Grass	9 cm Pot		YES

- Fire Hydrant
 - FD Siamese Connection
 - Light Standard
 - Hydro/Utility Pole
- BELOW GRADE SERVICES REFER TO CIVIL/CUP**
- U/G Water Service
 - U/G Storm Service
 - U/G Sanitary Service
 - GAS U/G Gas Service
 - BC U/G TelCo Service
 - H U/G Hydro Service
 - OHW U/G Hydro Service
 - Swale
 - 3:1 / 33% Slope
 - TWSI

PROPERTY OWNER
ZENA Investment Corporation
 1200 Baseline Road Ottawa K2C 0A6

3	per First Review Comments	2026 03 23
2	per Deficiency Comments	2026 01 08
1	SPC SUBMISSION 1	2025 11 14
0	REVIEW/COORDINATION	2025 09 29
#	Revision	Date

GJA INC.
 GINO J. AIELLO | LANDSCAPE ARCHITECT
 GJALA.COM | 613.286.5130 | GINO@GJALA.COM
 114 DEBARTY ROAD UNIT # 11, OTTAWA, ONTARIO | K1T 5C2

MYERS CARSTAR
 100 NIPISSING COURT KANATA

Landscape Plan
 Scale: 1:250

D07-12-25-0152 PLAN NO 19402