

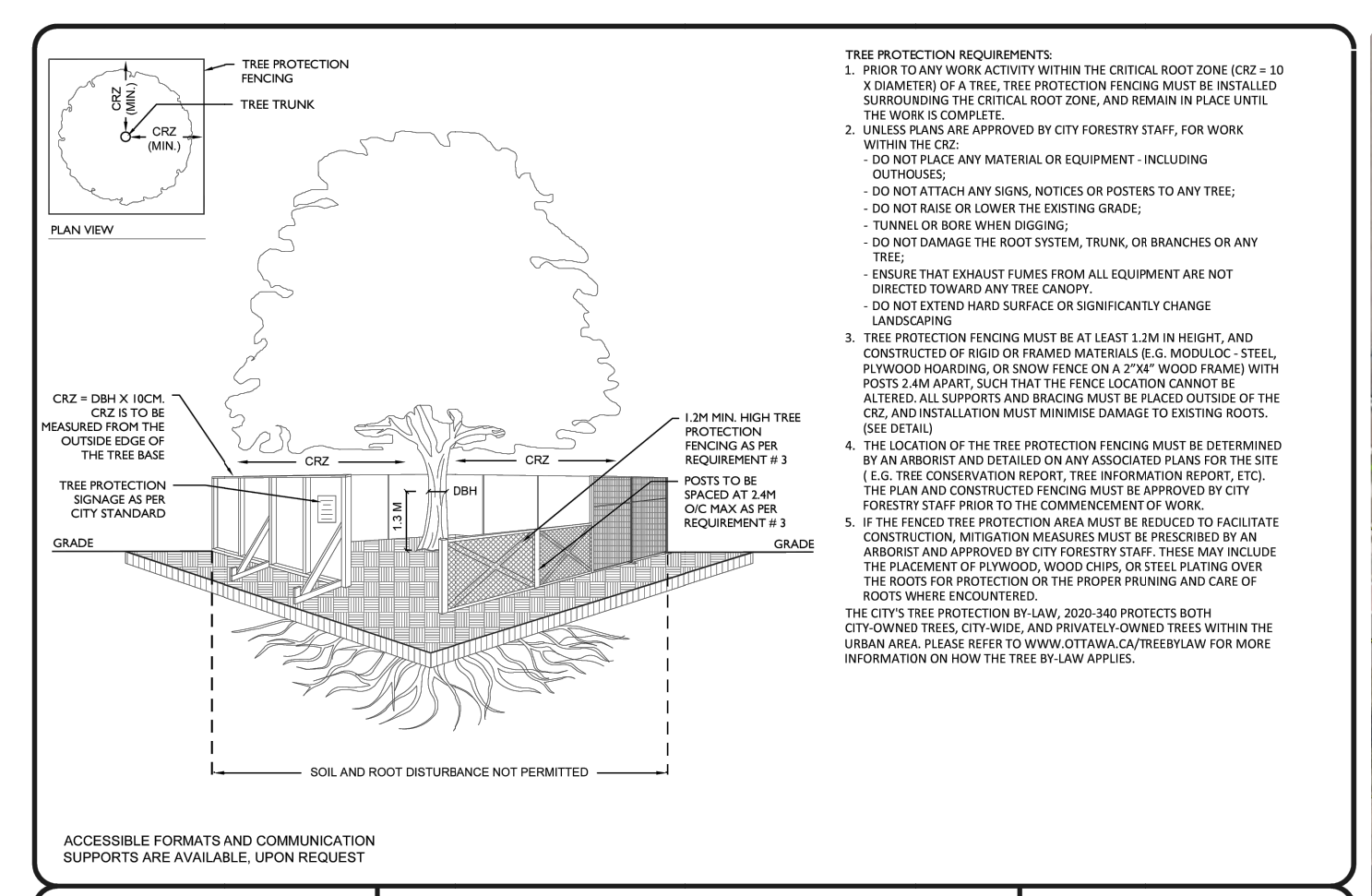


**METCALFE FAIRGROUNDS NEW OFFICE EXISTING TREE INVENTORY**

TCR Tree No.	CITY #.	REMOVE / RETAIN.	Species	DBH in Centimetres	CRZ Radius in Metres	Condition / Age / Notes / Species Origin
1	8390403	REMOVE	Manitoba Maple	33 & 50	8.0M R	Fair; maturing; double-stemmed at 1m; southwest bisects at 2m; generally upright in form; naturalized species
2	8404338	RETAIN	Red oak	12	1.2M R	Fair; maturing; native species
3	8404340	RETAIN	Hackberry	14	1.4M R	Good; maturing; native species
4	8404341	RETAIN	Hackberry	19	1.9M R	Good; maturing; native species
5	8390405	RETAIN	Hackberry	19	1.9M R	Good; maturing; native species
6	8390406	RETAIN	Red oak	7	.7M R	Fair; immature; basal damage; native species
7	8404342	RETAIN	Red oak	16	1.6M R	Good; maturing; native species
8	8404343	RETAIN	Red oak	14	1.4M R	Good; maturing; native species
9	8390407	RETAIN	Hackberry	16	1.2M R	Good; maturing; native species
10	8390408	RETAIN	Honey-locust	16	1.6M R	Good; restricted rooting area; introduced species to Eastern Ontario
11	8390409	RETAIN	White elm	25	2.5M R	Good; restricted rooting area; native cultivar

**SHRUB PLANTING METCALFE FAIR**

Code	Qty.	Botanical Name	Common Name	Size	Condition
HK	155	Hypericum kalmianum	Kalm St. John's Wort	30cm	Pot
GM	50	Geranium macrorrhizum	Bigroot Geranium	9 cm Pot	
GR	50	Geranium psilostemon 'Gerwat'	Rozanne Geranium	9 cm Pot	
PV	50	Panicum virgatum	Switch Grass	9 cm Pot	



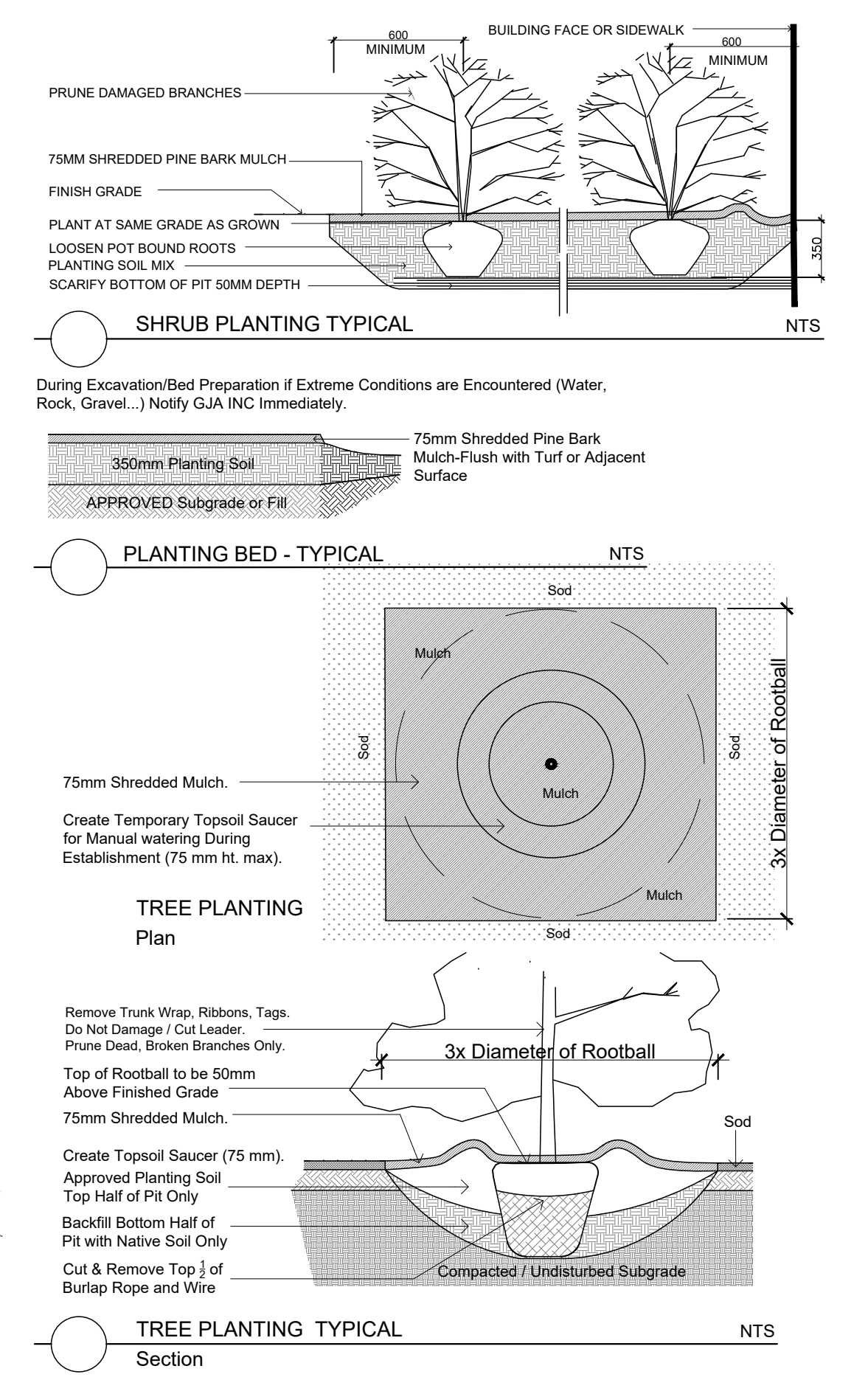
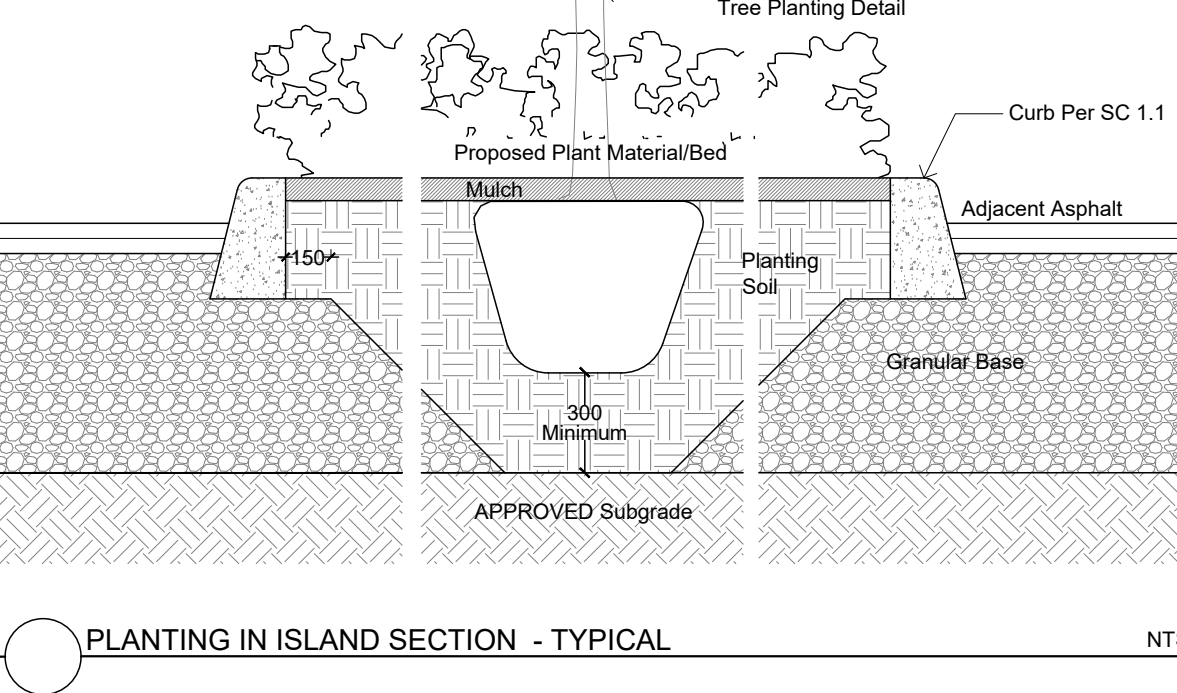
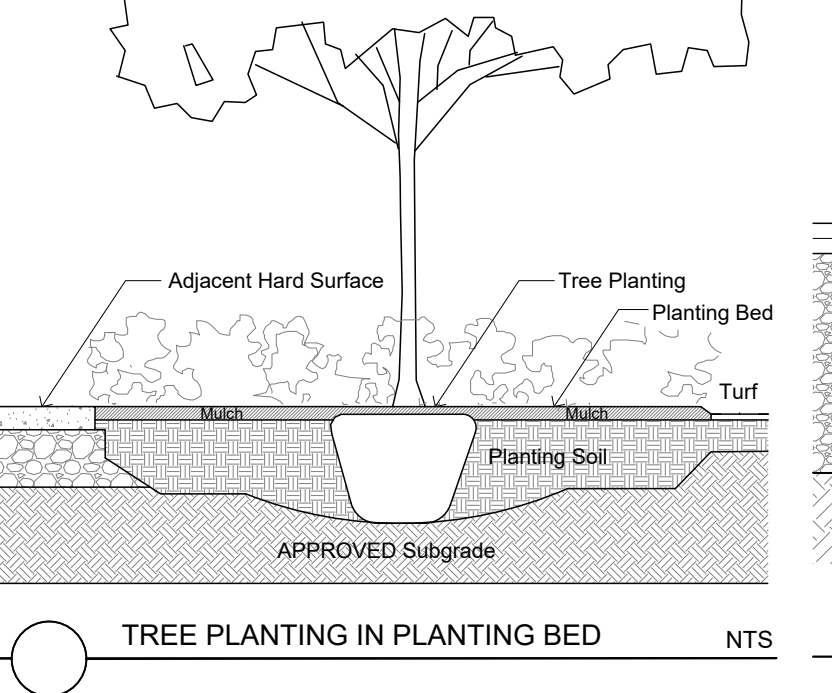
**TREE PROTECTION SPECIFICATION**

SCALE: NTS

DATE: MARCH 2021

DRAWING NO.: 1 of 1

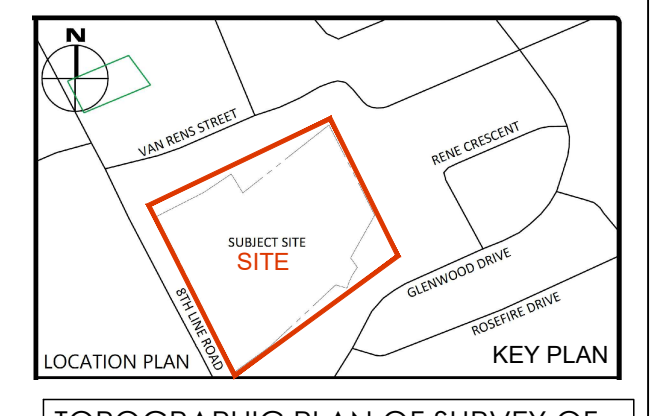
**TREE CONSERVATION REPORT**



Drawing Remains the Property of Copyright Reserved by GJA INC. Do Not Use or Reproduce Without Approval of Gino J. Aiello.

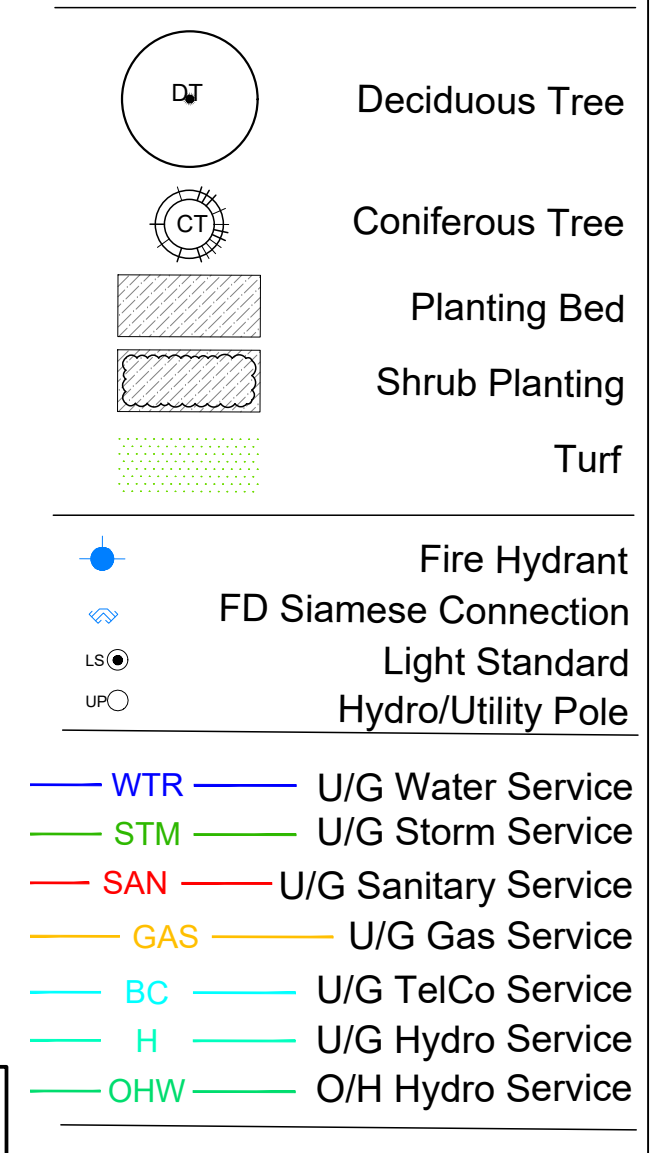
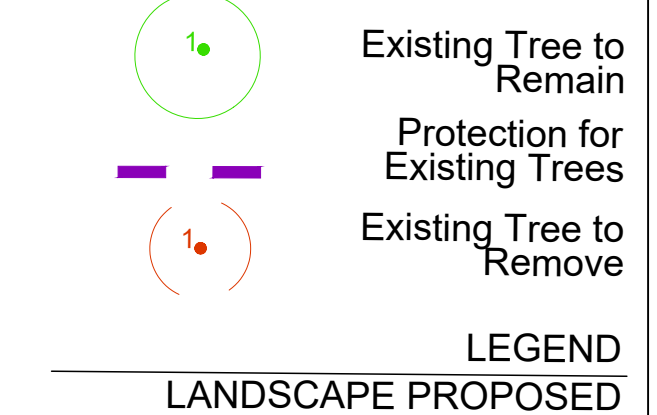
[PLANTING MIX TO BE APPROVED BY LANDSCAPE ARCHITECT | PLANT MATERIAL TO MEET CNLA STANDARDS/BE APPROVED BY LANDSCAPE ARCHITECT PRIOR TO PLANTING ALL MATERIALS & WORK TO BE MAINTAINED UNTIL FINAL ACCEPTANCE, INCLUDE 1 YEAR WARRANTY FROM DATE OF FINAL ACCEPTANCE | REFER TO CIVIL ENGINEER'S DRAWING FOR ELEVATIONS / GRADING]

The Landscape Plan is to be read in conjunction with the grading, servicing, site and survey plan. All trees to be preserved on or directly adjacent to the site will be protected | Plant material are to be installed a minimum of 3.0m away from any part of any hydro transformer, 3.0m corridor between a fire hydrant and the curb, a 2.5m radius beside or behind a fire hydrant, 2.0m from any servicing/utility line or structure |



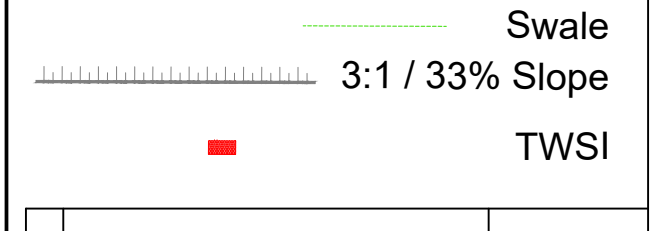
**TOPOGRAPHIC PLAN OF SURVEY OF PART OF LOTS 23 & 22 CONCESSION 8 AND PART OF BLOCK 79 REGISTERED PLAN 4M-896**

(GEOGRAPHIC TOWNSHIP OF OSGOODE)  
CITY OF OTTAWA  
Stantec Geomatics Ltd.  
ONTARIO LAND SURVEYORS



**TREE SCHEDULE - METCALFE FAIRGROUNDS NEW OFFICE 2821 8th Line Road**

CODE	QUANTITY		BOTANICAL NAME	COMMON NAME	B&B SPECIMEN	NATIVE to CANADA	FORECASTED SPREAD as per City of Ottawa Ecocstry		Canopy Cover Contribution/Tree in Square Metres	Total Canopy Cover
	SITE	OFF SITE					DIAMETER	RADIUS		
AR	1	4	5	Acer rubrum	Red Maple	50mm cal	10.0M	5.0M	78.5	392.5
CO	6	1	7	Callia occidentalis	American Sycamore	50mm cal	14.0M	7.0M	154	1078
PO	1	2	3	Platanus occidentalis	Common Hackberry	50mm cal	14.0M	7.0M	154	462
QM	1	3	4	Quercus macrocarpa	Bur Oak	50mm cal	14.0M	7.0M	154	616
<b>TOTAL</b>	<b>9</b>	<b>10</b>	<b>19</b>	Total Forecasted Canopy Cover Contribution Estimate for Proposed Deciduous Trees in sq. m.					<b>2548.5</b>	
AB	9	0	9	Abies balsamea	Balsam Fir	1.5m Ht.	5.0M	2.5M	20	180
JV	3	0	3	Juniperus virginiana	Eastern Red Cedar	1.5m Ht.	3.0M	1.5M	7	21
PG	11	0	11	Picea glauca	White Spruce	1.5m Ht.	5.0M	2.5M	30	230
<b>TOTAL</b>	<b>23</b>	<b>0</b>	<b>23</b>	Total Forecasted Canopy Cover Contribution Estimate for Proposed Coniferous Trees in sq. m.					<b>421</b>	
							<b>TOTAL FORECASTED CANOPY COVER of Proposed Trees in Square Metres</b>		<b>2969.5</b>	



Item	Description	Date
4	per Forestry Commission	2026 03 03
3	Street Tree Layout Adjusted	2026 02 24
2	SPC SUBMISSION 2	2025 12 01
1	SPC SUBMISSION 1	2025 10 29
0	REVIEW COORDINATION	2025 09 24

**PROPERTY OWNER**  
**Metcalfe Fairgrounds**

**GJA INC.**  
GINO J. AIELLO | LANDSCAPE ARCHITECT  
GJALA.COM | 613 286 5130 | GINO@GJALA.COM  
1150 BURNHAMTHORPE RD UNIT # 1, OTTAWA ON CANADA K1T 2C2

**METCALFE FAIRGROUNDS OFFICE**  
2821 Eighth Line Road Metcalfe

**Landscape Plan / TCR**  
Scale: 1:500