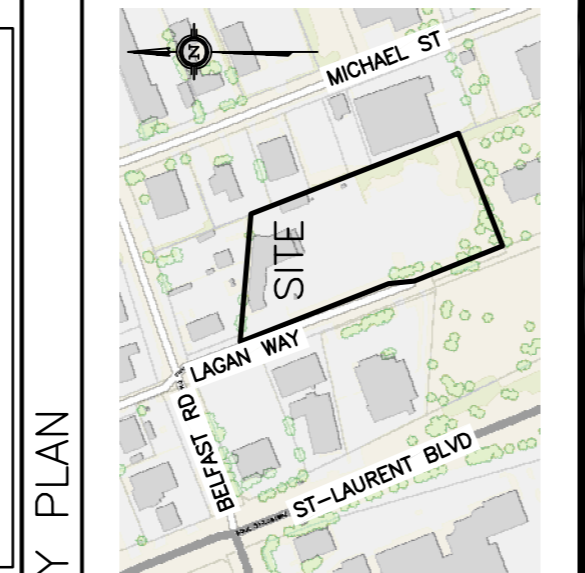


LEGEND	
FFL	FIRST FLOOR ELEVATION
TOP	TOP OF FOUNDATION
BFL	BASEMENT FLOOR ELEVATION
USF	UNDERSIDE OF FOOTING
---	PROPERTY LINE
CB	CATCH BASIN
MH	STORM MANHOLE
CB/MH	CATCH BASIN/MANHOLE
MH	SANITARY MANHOLE
FH	FIRE HYDRANT
FDC	FIRE DEPARTMENT CONNECTION
---	EXISTING GRADE ELEVATION
---	PROPOSED GRADE ELEVATION
---	EXISTING SLOPE OF GRADE
---	PROPOSED SLOPE OF GRADE
---	EMERGENCY OVERLAND FLOW
---	CENTERLINE OF SWALE
---	150mm BARRIER CURB
---	DEPRESSED CURB
---	SILT FENCE BARRIER
---	GRANULAR PAVEMENT
---	LIGHT-DUTY PAVEMENT
---	HEAVY-DUTY PAVEMENT
---	LANDSCAPE



No.	DATE	REVISION
3	APR 7-26	RE-ISSUED FOR APPROVAL
2	DEC 16-25	ISSUED FOR APPROVAL
1	NOV 13-25	ISSUED FOR COORDINATION

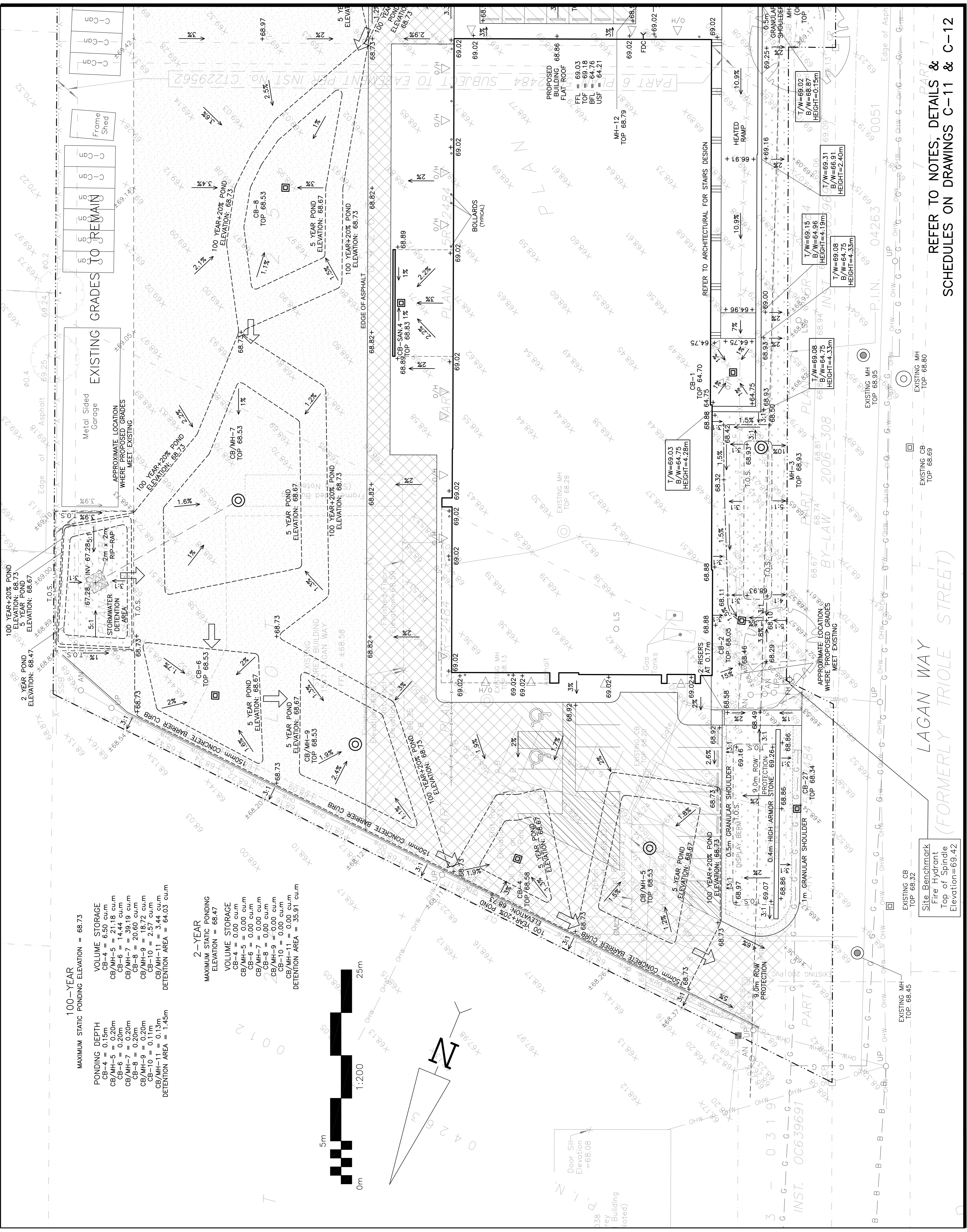
D. B. GRAY ENGINEERING INC.
 Professional Management - Consulting & Planning - Storm & Sanitary Services - Remediation
 700 Long Point Circle
 Ottawa, Ontario
 d.gray@dbgrayengineering.com
 613-425-8044

Project
**PROPOSED DICKIE MOORE
 RENTALS PROPERTY
 REDEVELOPMENT**
 1547 LAGAN WAY
 OTTAWA, ONTARIO

Drawing Title
**GRADING PLAN
 (NORTH AREA)**

Engineer's Seal

 Drawing No.
C-6
 of 13
 NOT VALID UNLESS
 SIGNED & DATED



100-YEAR
 MAXIMUM STATIC PONDING ELEVATION = 68.73

PONDING DEPTH	
CB-4	= 0.15m
CB/MH-5	= 0.20m
CB-6	= 0.20m
CB/MH-7	= 0.20m
CB-8	= 0.20m
CB/MH-9	= 0.20m
CB-10	= 0.13m
CB/MH-11	= 0.13m

DETENTION AREA = 1.45m

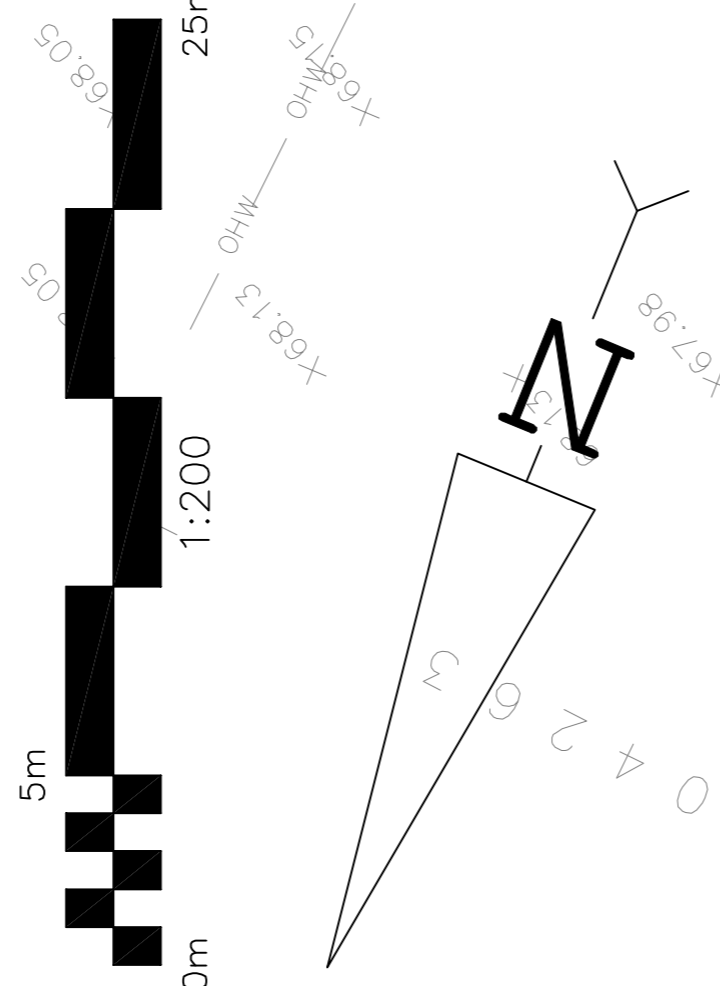
VOLUME STORAGE	
CB-4	= 6.50 cum
CB/MH-5	= 21.18 cum
CB-6	= 14.44 cum
CB/MH-7	= 39.19 cum
CB-8	= 20.60 cum
CB/MH-9	= 18.72 cum
CB-10	= 2.57 cum
CB/MH-11	= 3.44 cum

DETENTION AREA = 64.03 cum

2-YEAR
 MAXIMUM STATIC PONDING ELEVATION = 68.47

VOLUME STORAGE	
CB-4	= 0.00 cum
CB/MH-5	= 0.00 cum
CB-6	= 0.00 cum
CB/MH-7	= 0.00 cum
CB-8	= 0.00 cum
CB/MH-9	= 0.00 cum
CB-10	= 0.00 cum
CB/MH-11	= 0.00 cum

DETENTION AREA = 35.91 cum



REFER TO NOTES, DETAILS &
 SCHEDULES ON DRAWINGS C-11 & C-12

LAGAN WAY
 (FORMERLY TRIOLE STREET)

Site Benchmark
 Fire Hydrant
 Top of Spindle
 Elevation=69.42

EXISTING MH
 TOP 68.45

EXISTING CB
 TOP 68.32

EXISTING CB
 TOP 68.69

EXISTING MH
 TOP 68.80