

DRAWING NOTES

① TYPICAL:
DISCONNECT AND REMOVE LIGHTING FIXTURE MARKED AS 'R'. FIXTURE TO BE REPLACED WITH NEW AS INDICATED IN E3.2. COORDINATE TIMING OF WORK WITH ALL TRADES.
FOR DEVICES MARKED AS 'R1', DISCONNECT AND REMOVE LIGHTING FIXTURE C/W WIRING AND CONDUIT BACK TO NEAREST JUNCTION BOX.



INFRASTRUCTURE SERVICES
DESIGN AND CONSTRUCTION

SERVICES D'INFRASTRUCTURE
DIRECTION DE CONCEPTION ET DE CONSTRUCTION

FOR / POUR

Client - Department
Infrastructure and Water Services Department
Design & Construction



1688 Woodward Dr. Ottawa Ontario Canada K2C 3R6
613 727-5111 Voice
613 727-5115 Fax
www.gwal.com Web

6			
5			
4			
3			
2	ISSUED FOR SITE PLAN CONTROL	2020/04/14	
1	ISSUED FOR 30% SUBMISSION	2019/02/20	

NUMBER	MILESTONE / FAT SALLANT	DATE	Y/M/D (MM/JJ)	INITIALS
DESIGNED BY / CONCEVU PAR	E. DROUIN			
DRAWN BY / DESSEINÉ PAR	M.M. VASQUEZ			
SCALE / ÉCHELLE	AS NOTED			

① DRAWING TITLE
SCALE:
SHEET NUMBER

THIS DRAWING IS THE PROPERTY OF THE CITY OF OTTAWA AND ALL COPYRIGHT IS RESERVED. DIMENSIONS ON DRAWING ARE FOR ESTIMATING PURPOSES ONLY. IT IS THE RESPONSIBILITY OF EACH CONTRACTOR AND SUB-CONTRACTOR OR CONSULTANT TO CHECK AND VERIFY ALL DIMENSIONS AND CONDITIONS ON SITE. NOTIFY OWNER OF ANY ERRORS OR OMISSIONS PRIOR TO COMMENCING THE WORK. DO NOT SCALE THE DRAWINGS.
CE DESSIN CONSTITUE LA PROPRIÉTÉ DE LA VILLE D'OTTAWA ET TOUT DROIT D'AUTEUR EST RÉSERVÉ. LES DIMENSIONS UTILISÉES NE SONT À DES FINS D'ESTIMATION SEULEMENT. IL INCOMBE À CHAQUE ENTREPRENEUR, SOUS-CONTRACTANT OU CONSULTANT DE VÉRIFIER TOUTES LES DIMENSIONS ET LES CONDITIONS SUR LE QUANTER. VOUS LEZ, INFORMER LE PROPRIÉTAIRE DE TOUTE ERREUR OU OMISSION AVANT D'ENTAMER LES TRAVAUX. NE DÉSSEINÉ PAS LES PLANS À L'ÉCHELLE.

ARCHITECT / ARCHITECTE

CONSULTANT / EXPERT-CONSEIL

CONSULTANT / EXPERT-CONSEIL

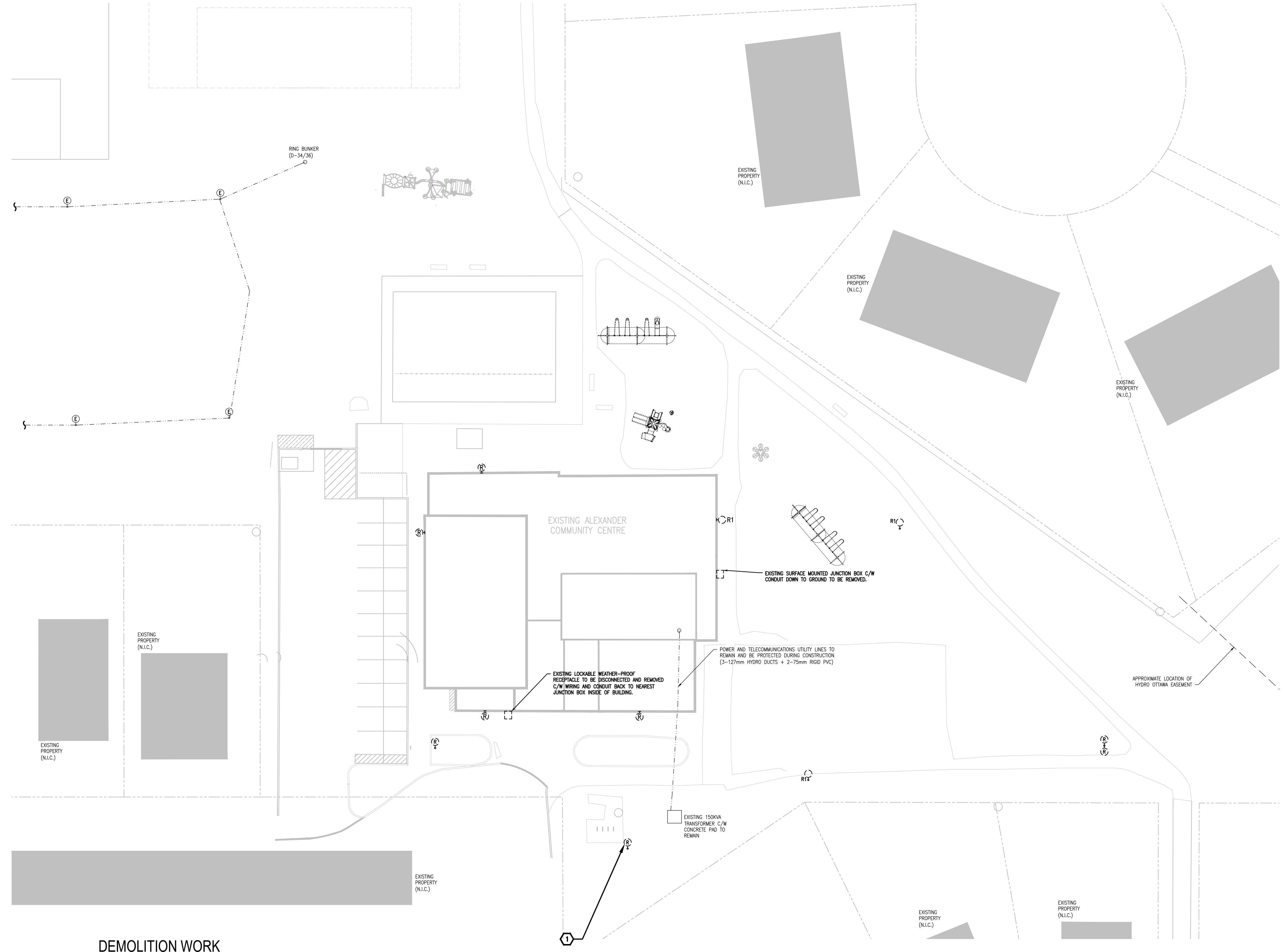
CONSULTANT / EXPERT-CONSEIL

PROJECT / LOCATION / PROJET / ENDROIT
ALEXANDER COMMUNITY CENTRE EXPANSION

950 Silver Street
OTTAWA, ONTARIO

DRAWING / DESSIN
ELECTRICAL SITE PLAN DEMOLITION WORK

BUSINESS ENTITY / NUMÉRO DE LEVÉE BUILDING NUMBER / NUMÉRO DU BÂTIMENT	SHEET NO. / FEUILLE NO. E3.1
CITY PROJECT NO. / NUMÉRO DE PROJET 2025-565	



DEMOLITION WORK
SITE PLAN
①
E3.1 1:250

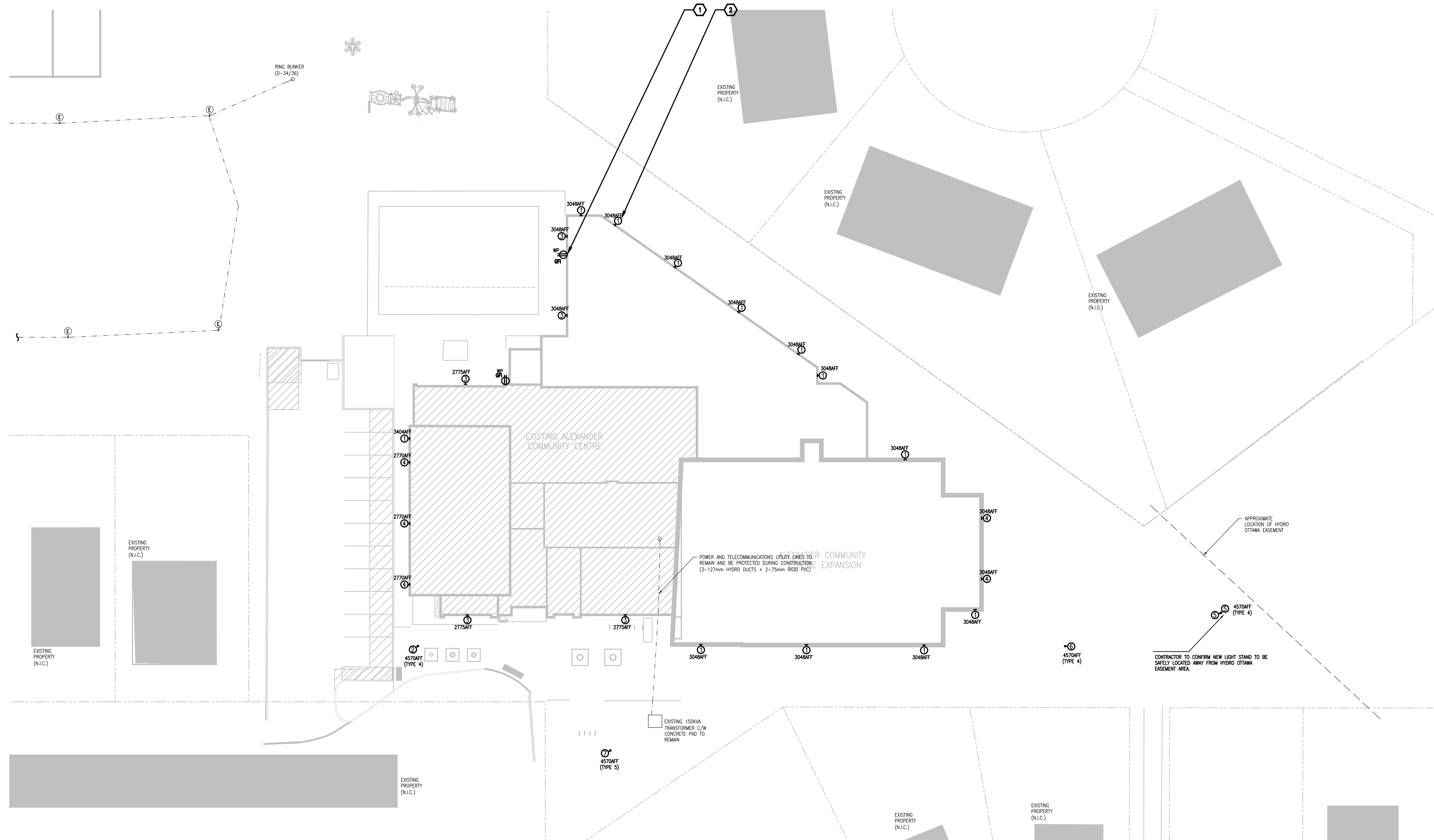
LIGHTING FIXTURE SCHEDULE (OUTDOORS)								
TYPE	DESCRIPTION	BASIS OF DESIGN	TYPE	WATTS	COLOR	VOLT	MOUNTING	REMARKS
1	WALL PACK	BROMO AE-WP-BR-40W-CA	LED	16.2W	4000K	120V	WALL MOUNT	COORDINATE FINISH COLOUR WITH ARCHITECTURAL TRADES
2	AREA LIGHT	RIZZUTO AE-00-RZ-100W-X-XX	LED	100W	4000K	120V	POST TOP	COORDINATE FINISH COLOUR WITH ARCHITECTURAL TRADES
3	WALL PACK	MAUNA AE-WP-MN-70W-TCP-CA-XX	LED	60W	TBD	120V	WALL MOUNT	COORDINATE LAMP COLOUR, COLUMN HEIGHT AND FINISH WITH ARCHITECTURAL TRADES
4	WALL PACK	BROMO AE-WP-BR-40W-TCP-CA	LED	28W	TBD	120V	WALL MOUNT	COORDINATE LAMP COLOUR, COLUMN HEIGHT AND FINISH WITH ARCHITECTURAL TRADES
5	LIGHT STANDING HEAD	GENESYS AE-00-GY-300UV-D-XX-T4	LED	300W	TBD	120V	POST TOP	COORDINATE LAMP COLOUR, COLUMN HEIGHT AND FINISH WITH ARCHITECTURAL TRADES
6	LIGHT STANDING HEAD	GENESYS AE-00-GY-080XV-D-XX-T4-D-XX-U-SHIELD	LED	80W	TBD	120V	POST TOP	COORDINATE LAMP COLOUR, COLUMN HEIGHT AND FINISH WITH ARCHITECTURAL TRADES
7	LIGHT STANDING HEAD	GENESYS AE-00-GY-080UV-D-XX-T5-X-XX	LED	80W	TBD	120V	POST TOP	COORDINATE LAMP COLOUR, COLUMN HEIGHT AND FINISH WITH ARCHITECTURAL TRADES

NOTES:
 1. FIXTURES TO BE PROVIDED WITH ALL HARDWARE, ANCILLARIES AND FIXINGS FOR A COMPLETE INSTALLATION.
 2. CONTRACTOR TO PROVIDE FULL LIGHTING PHOTOMETRICS PRIOR TO PROCUREMENT OF LIGHT FIXTURES FOR CONSULTANT APPROVAL.

DRAWING NOTES

① TYPICAL:
 PROVIDE NEW ELECTRICAL DEVICE AS INDICATED. REFER TO E0.1 FOR SYMBOL LEGENDS. COORDINATE EXACT LOCATION AND HEIGHT WITH ARCHITECTURAL TRADES.

② TYPICAL:
 PROVIDE NEW LIGHTING FIXTURE AS INDICATED. REFER TO LIGHTING FIXTURE SCHEDULE FOR MORE INFORMATION. COORDINATE EXACT LOCATION AND HEIGHT WITH ARCHITECTURAL TRADES.



Ottawa
 INFRASTRUCTURE SERVICES
 DESIGN AND CONSTRUCTION

SERVICES D'INFRASTRUCTURE
 DIRECTION DE CONCEPTION ET DE CONSTRUCTION

FOR / POUR
 Client - Department
 Infrastructure and Water Services Department
 Design & Construction

GWAL 70 years
 a division of Englobe

1688 Woodward Dr. Ottawa Ontario Canada K2C 3R6
 613 727-5111 Voice 613 727-5115 Fax www.gwal.com Web

6			
5			
4			
3			
2	ISSUED FOR SITE PLAN CONTROL	2020/04/14	
1	ISSUED FOR 30% SUBMISSION	2020/03/20	

NUMBER	DATE	BY	INITIALS
1	2020/03/20	E.DROUIN	

DESIGNED BY / CONCEPTEUR: M.M. VASQUEZ
 DRAWN BY / DRESSEUR: K.A.

CHECKED BY / VERIFIE PAR: E. DROUIN
 SCALE / ECHELLE: AS NOTED

DRAWING TITLE
 SCALE: 1:250
 SHEET NUMBER: 1

THIS DRAWING IS THE PROPERTY OF THE CITY OF OTTAWA AND ALL COPYRIGHT IS RESERVED. DIMENSIONS ON DRAWING ARE FOR ESTIMATING PURPOSES ONLY. IT IS THE RESPONSIBILITY OF EACH CONTRACTOR AND SUB-CONTRACTOR OR CONSULTANT TO CHECK AND VERIFY ALL DIMENSIONS AND CONDITIONS ON SITE. NOTIFY OWNER OF ANY ERRORS OR OMISSIONS PRIOR TO COMMENCING THE WORK. DO NOT SCALE THE DRAWINGS.

CE DESSIN CONSTITUE LA PROPRIETE DE LA VILLE D'OTTAWA ET TOUT DROIT D'AUTEUR EST RESERVE. LES DIMENSIONS UTILISEES LE SONT A DES FINS D'ESTIMATION SEULEMENT. IL INCOMBE A CHAQUE ENTREPRENEUR, SOUS-CONTRACTANT OU CONSULTANT DE VERIFIER TOUTES LES DIMENSIONS ET LES CONDITIONS SUR LE QUANTIER. NOTifieZ L'INFORMER LE PROPRIETAIRE DE TOUTE ERREUR OU OMISSION AVANT D'ENTAMER LES TRAVAUX. NE DRESSEZ PAS LES PLANS A L'ECHELLE.

ARCHITECT / ARCHITECTE: [Blank]
 CONSULTANT / EXPERT-CONSEIL: R.M. BOIVIN, LICENSED PROFESSIONAL ENGINEER, APR 14 2020, 100122674, PROVINCE OF ONTARIO

CONSULTANT / EXPERT-CONSEIL: [Blank]

PROJECT / LOCATION / PROJET / ENDROIT:
ALEXANDER COMMUNITY CENTRE EXPANSION

950 Silver Street
 OTTAWA, ONTARIO

DRAWING / DESSIN:
ELECTRICAL SITE PLAN NEW WORK

BUSINESS ENTITY / NUMERO DE LEVANTE: [Blank]
 BUILDING NUMBER / NUMERO DU BATIMENT: [Blank]

CITY PROJECT NO. / NUMERO DE PROJET: [Blank]
 CIVIC PROJECT NO. / NUMERO DE PROJET: 2025-565

E3.2

NEW WORK SITE PLAN
 1
 E3.2 1:250