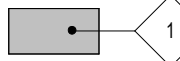
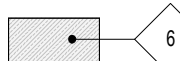
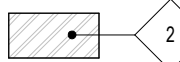
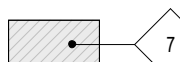
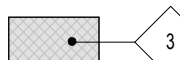

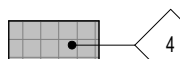
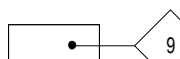
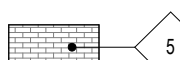
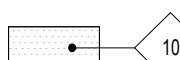


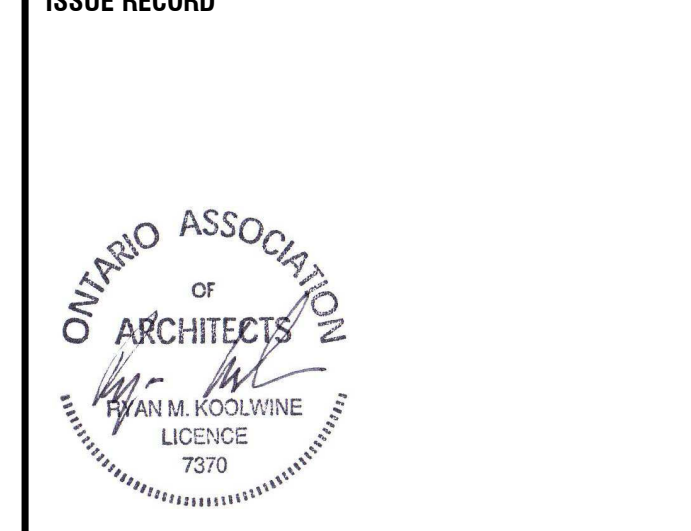
**CLADDING LEGEND**

 1 PRECAST CONCRETE PANEL DARK GREY	 6 GLASS SPANDEL PANEL GREY
 2 ALUMINUM PANEL WHITE	 7 GLASS SPANDEL PANEL BLACK
 3 ALUMINUM PANEL BRONZE	 8 PORCELAIN TILE LIGHT GREY
 4 ALUMINUM PANEL BLACK	 9 ALUMINUM & GLASS RAILING
 5 BRICK MASONRY BROWN	 10 BIRD-SAFE GLASS

- GENERAL ARCHITECTURAL NOTES:**
- This drawing is the property of the Architect and may not be reproduced or used without the expressed consent of the Architect.
  - Drawings are not to be scaled. The Contractor is responsible for checking and verifying all levels and dimensions and shall report all discrepancies to the Architect and obtain clarification prior to commencing work.
  - Upon notice in writing, the Architect will provide written graphic clarification or supplementary information regarding the intent of the Contract Documents.
  - The Architectural drawings are to be read in conjunction with all other Contract Documents including Project Manuals and the Structural, Mechanical and Electrical Drawings.
  - Positions of proposed or finished Mechanical or Electrical devices, fittings and fixtures are indicated on the Architectural Drawings. Locations shown on the Architectural Drawings shall govern over Mechanical and Electrical Drawings. Mechanical and Electrical items not clearly located will be located as directed by the Architect.
  - These documents are not to be used for construction unless specifically noted for such purpose.



5	REISSUED FOR SITE PLAN CONTROL	26-04-16
4	ISSUED FOR COORDINATION	26-04-14
3	ISSUED FOR COORDINATION	26-04-10
2	ISSUED FOR COORDINATION	26-04-01
1	ISSUED FOR SITE PLAN CONTROL	26-01-30



**project1 studio**  
Project1 Studio Incorporated  
[613.884.3939 | mail@project1studio.ca]

**200 ISABELLA STREET**  
200 Isabella Street  
Ottawa, ON  
K1S 1V7

PROJ	SCALE	DRAWN	REVIEWED
2516	NOTED	BH	RMK

**NORTH ELEVATION**

**A200**

CLADDING LEGEND					
	1	PRECAST CONCRETE PANEL DARK GREY		6	GLASS SPANDREL PANEL GREY
	2	ALUMINUM PANEL WHITE		7	GLASS SPANDREL PANEL BLACK
	3	ALUMINUM PANEL BRONZE		8	PORCELAIN TILE LIGHT GREY
	4	ALUMINUM PANEL BLACK		9	ALUMINUM & GLASS RAILING
	5	BRICK MASONRY BROWN		10	BIRD-SAFE GLASS

- GENERAL ARCHITECTURAL NOTES:
- This drawing is the property of the Architect and may not be reproduced or used without the expressed consent of the Architect.
  - Drawings are not to be scaled. The Contractor is responsible for checking and verifying all levels and dimensions and shall report all discrepancies to the Architect and obtain clarification prior to commencing work.
  - Upon notice in writing, the Architect will provide written clarification or supplementary information regarding the intent of the Contract Documents.
  - The Architectural drawings are to be read in conjunction with all other Contract Documents including Project Manuals and the Structural, Mechanical and Electrical Drawings.
  - Positions of proposed or finished Mechanical or Electrical devices, fittings and fixtures are indicated on the Architectural Drawings. Locations shown on the Architectural Drawings shall govern over Mechanical and Electrical Drawings. Mechanical and Electrical items not clearly located will be located as directed by the Architect.
  - These documents are not to be used for construction unless specifically noted for such purpose.



ISSUE RECORD		
5	REISSUED FOR SITE PLAN CONTROL	26-04-16
4	ISSUED FOR COORDINATION	26-04-14
3	ISSUED FOR COORDINATION	26-04-10
2	ISSUED FOR COORDINATION	26-04-01
1	ISSUED FOR SITE PLAN CONTROL	26-01-30



**project1  
studio**

Project1 Studio Incorporated  
[613.884.3939] | mail@project1studio.ca

**200 ISABELLA STREET**  
200 Isabella Street  
Ottawa, ON  
K1S 1V7

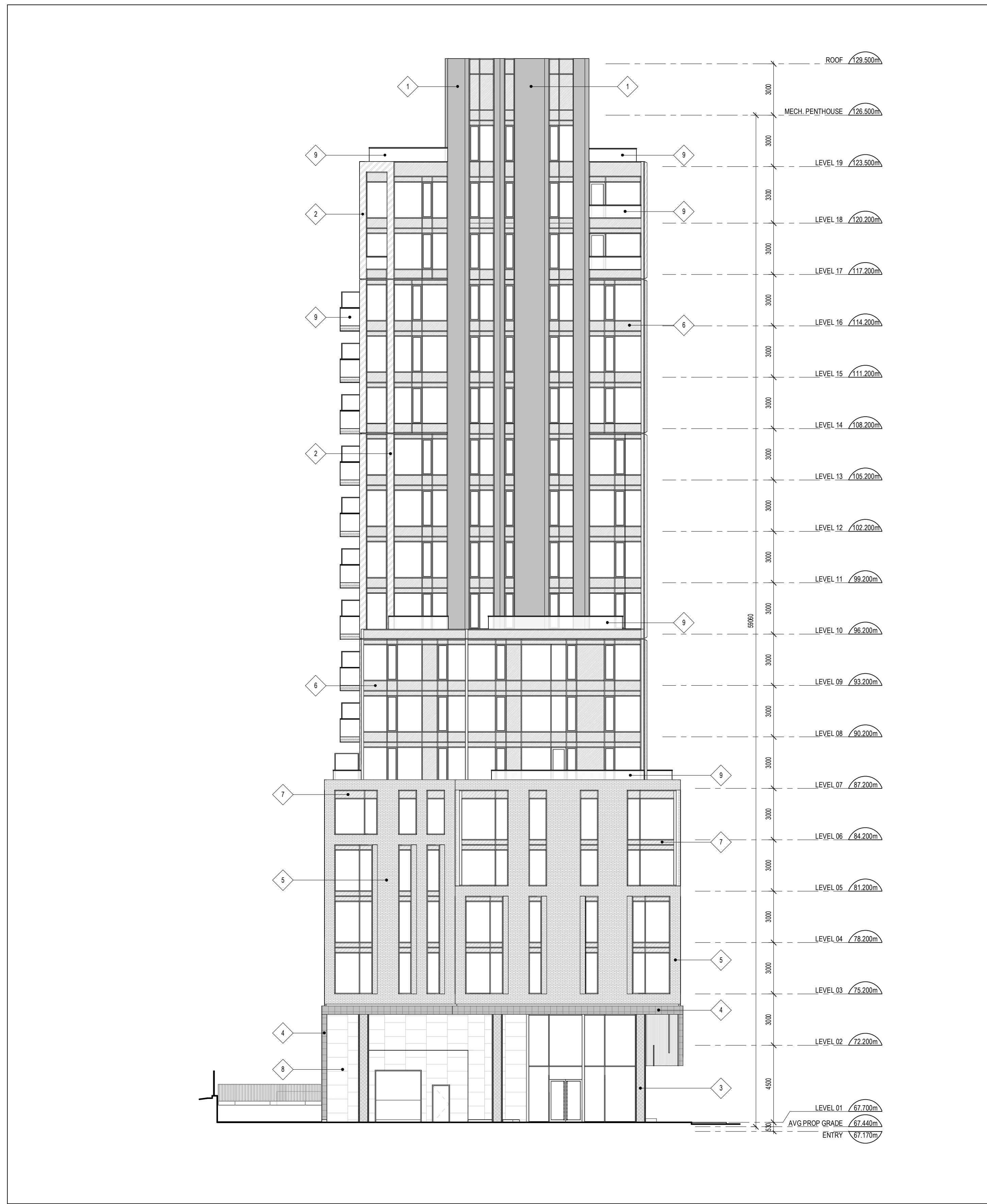
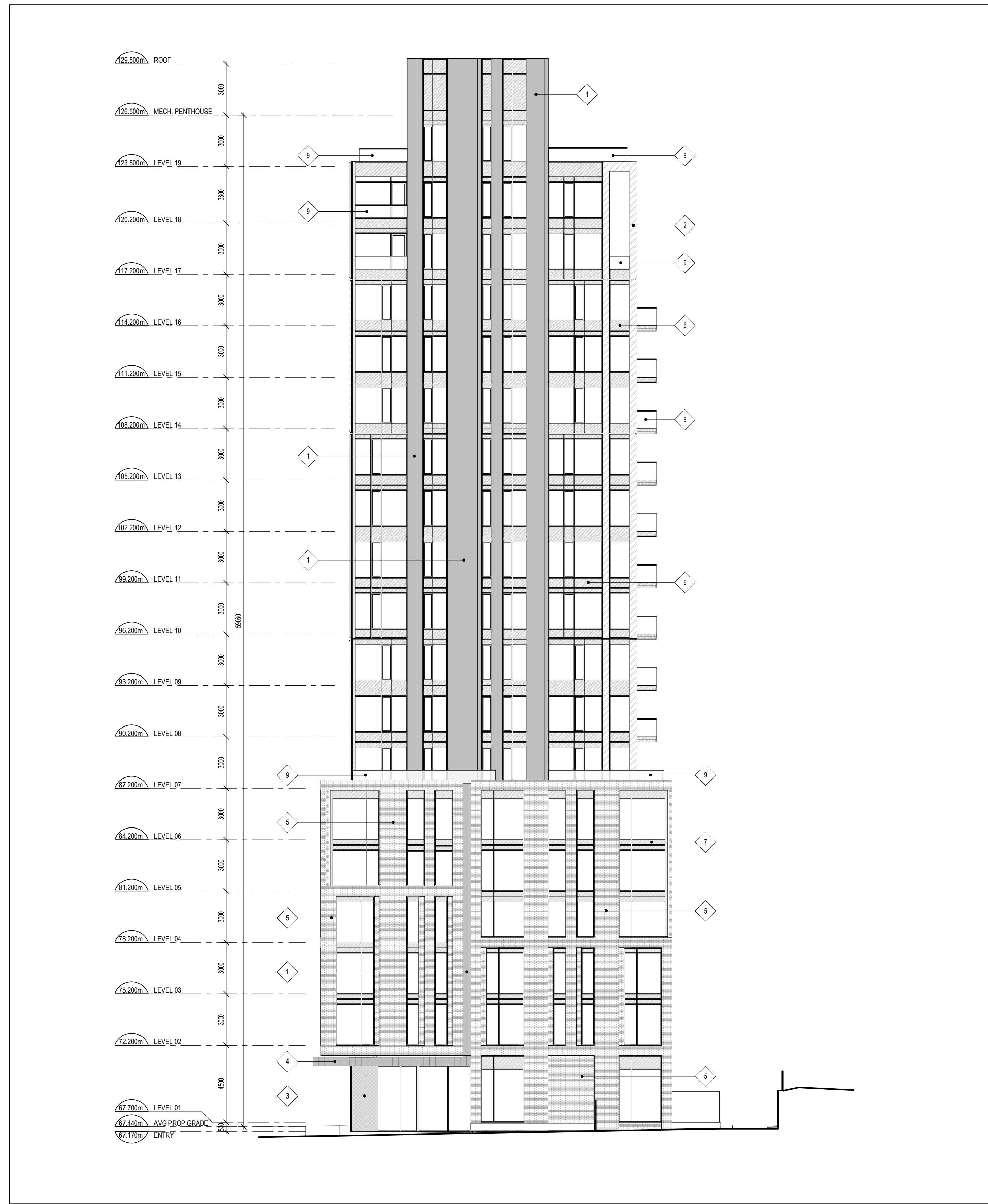
PROJ	SCALE	DRAWN	REVIEWED
2516	NOTED	BH	RMK

**SOUTH ELEVATION**

**A201**

CLADDING LEGEND					
	1	PRECAST CONCRETE PANEL DARK GREY		6	GLASS SPANDREL PANEL GREY
	2	ALUMINUM PANEL WHITE		7	GLASS SPANDREL PANEL BLACK
	3	ALUMINUM PANEL BRONZE		8	PORCELAIN TILE LIGHT GREY
	4	ALUMINUM PANEL BLACK		9	ALUMINUM & GLASS RAILING
	5	BRICK MASONRY BROWN		10	BIRD-SAFE GLASS

- GENERAL ARCHITECTURAL NOTES:
- This drawing is the property of the Architect and may not be reproduced or used without the expressed consent of the Architect.
  - Drawings are not to be scaled. The Contractor is responsible for checking and verifying all levels and dimensions and shall report all discrepancies to the Architect and obtain clarification prior to commencing work.
  - Upon notice in writing, the Architect will provide written clarification or supplementary information regarding the intent of the Contract Documents.
  - The Architectural drawings are to be read in conjunction with all other Contract Documents including Project Manuals and the Structural, Mechanical and Electrical Drawings.
  - Positions of exposed or finished Mechanical or Electrical devices, fittings and fixtures are indicated on the Architectural Drawings. Locations shown on the Architectural Drawings shall govern over Mechanical and Electrical Drawings. Mechanical and Electrical items not clearly located will be located as directed by the Architect.
  - These documents are not to be used for construction unless specifically noted for such purpose.



ISSUE RECORD	DATE
5	REISSUED FOR SITE PLAN CONTROL 26-04-16
4	ISSUED FOR COORDINATION 26-04-14
3	ISSUED FOR COORDINATION 26-04-10
2	ISSUED FOR COORDINATION 26-04-01
1	ISSUED FOR SITE PLAN CONTROL 26-01-30



**project1 studio**  
Project1 Studio Incorporated  
[613.884.3939] | mail@project1studio.ca

**200 ISABELLA STREET**  
200 Isabella Street  
Ottawa, ON  
K1S 1V7

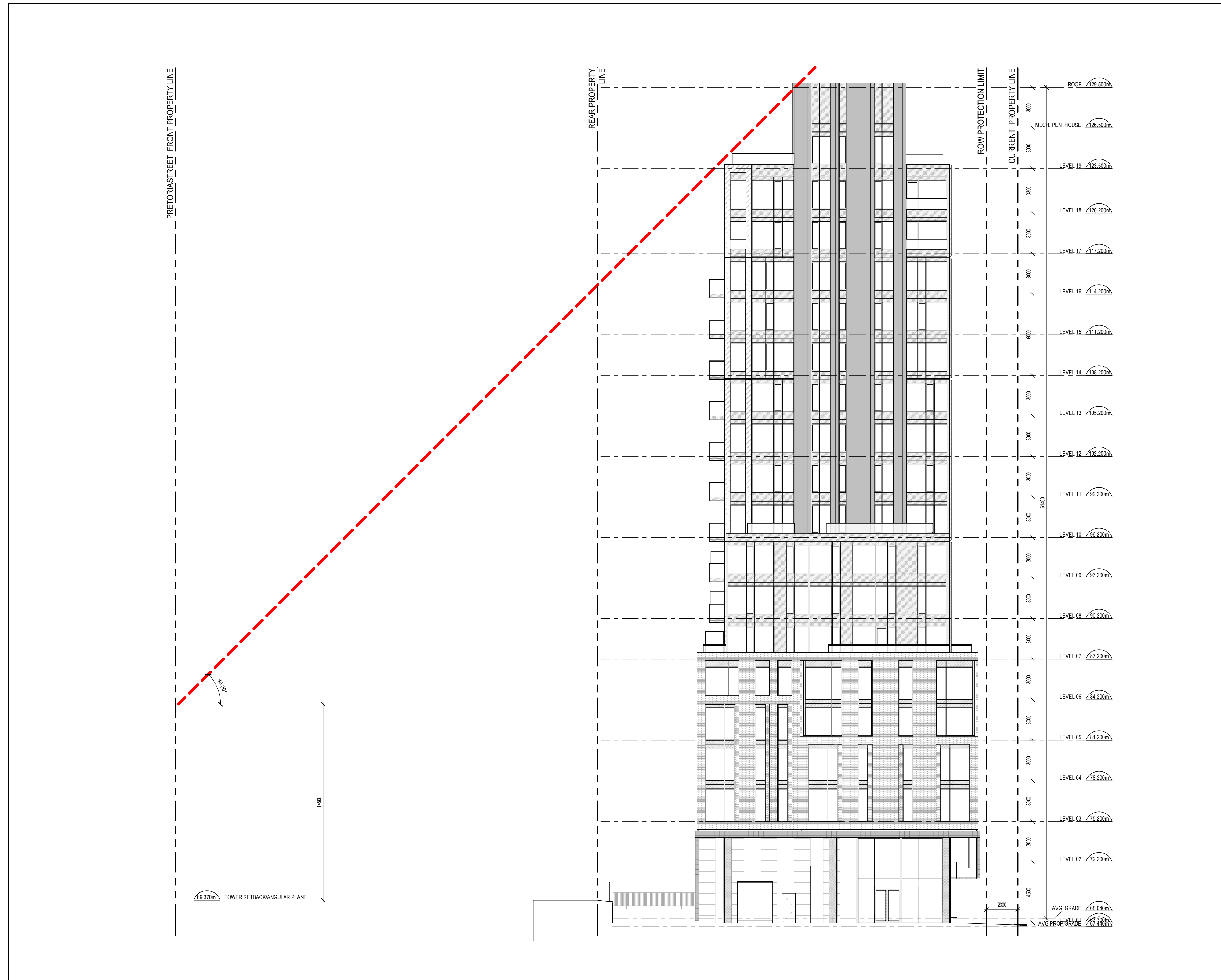
PROJ	SCALE	DRAWN	REVIEWED
2516	NOTED	BH	RMK

**EAST & WEST ELEVATION**

**2 WEST ELEVATION**  
A202 SCALE: 1 : 150

**1 EAST ELEVATION**  
A202 SCALE: 1 : 150

**A202**



- GENERAL ARCHITECTURAL NOTES:
1. This drawing is the property of the Architect and may not be reproduced or used without the expressed consent of the Architect.
  2. Drawings are not to be scaled. The Contractor is responsible for checking and verifying all levels and dimensions and shall report all discrepancies to the Architect and obtain clarification prior to commencing work.
  3. Upon notice in writing, the Architect will provide written graphic clarification or supplementary information regarding the intent of the Contract Documents.
  4. The Architectural drawings are to be read in conjunction with all other Contract Documents including Project Manuals and the Structural, Mechanical and Electrical Drawings.
  5. Positions of exposed or finished Mechanical or Electrical devices, fittings and fixtures are indicated on the Architectural Drawings. Locations shown on the Architectural Drawings shall govern over Mechanical and Electrical Drawings. Mechanical and Electrical items not clearly located will be located as directed by the Architect.
  6. These documents are not to be used for construction unless specifically noted for such purpose.

5	REISSUED FOR SITE PLAN CONTROL	26-04-16
4	ISSUED FOR COORDINATION	26-04-14
3	ISSUED FOR COORDINATION	26-04-10

ISSUE RECORD

**project1 studio**  
 Project1 Studio Incorporated  
 (613.884.3939) | mail@project1studio.ca

**200 ISABELLA STREET**  
 200 Isabella Street  
 Ottawa, ON  
 K1S 1V7

PROJ	SCALE	DRAWN	REVIEWED
2516	NOTED	BH	RMK

ANGULAR PLANE DIAGRAM

**A203**

1 ANGULAR PLANE DIAGRAM  
 A203 SCALE: 1 : 150