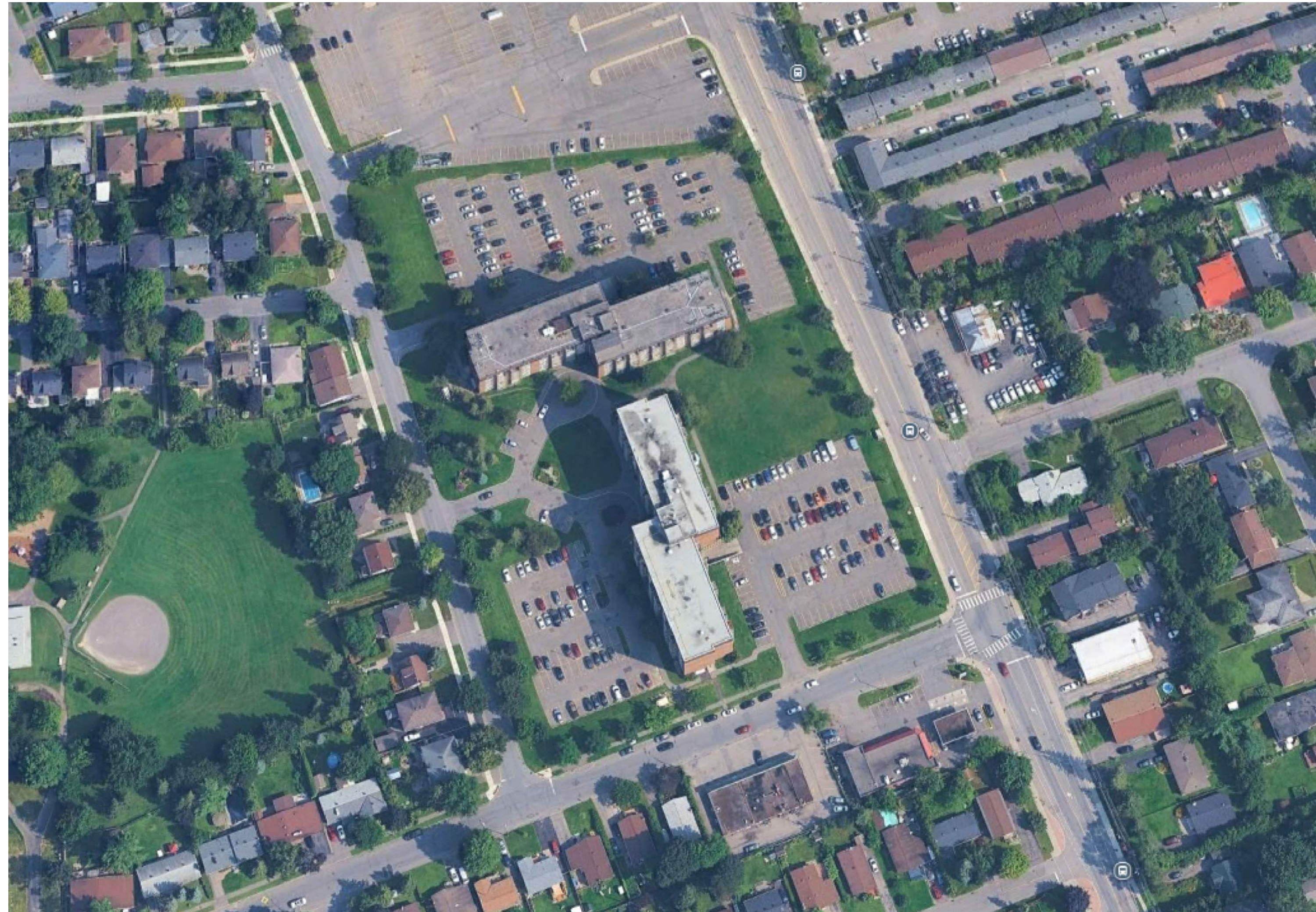


RESIDENTIAL DEVELOPMENT OSGOODE STACKS

Ottawa, Ontario



OSGOODE PROPERTIES



8395 JANE STREET, SUITE 202. VAUGHAN, ONTARIO L4K 5Y2 T: 905-417-5515 F: 905-417-5517 EMAIL: INFO@SRNARCHITECTS.COM

CLIENT:
OSGOODE PROPERTIES
1284 WELLINGTON STREET WEST
K1Y 3A9
OTTAWA, ONTARIO
T. 613 729 0656

ARCHITECTS OF RECORD:
SRN ARCHITECTS INC.
8395 JANE STREET, SUITE 202
L4K 5Y2
VAUGHAN, ONTARIO
T. 905 417-5515

CIVIL ENGINEER:
EGIS- GROUP
115 WALGREEN ROAD
K0A 1L0
T. 613 714 4629
OTTAWA, ONTARIO

LANDSCAPE ARCHITECT:
STUDIO TLA
20 CHAMPLAIN BLVD, SUITE 102
M3H 2Z1
TORONTO, ONTARIO
T. 416 6384911

SURVEYOR:
FARLEY, SMITH & DENIS SURVEYING LTD.
30 COLLONADE ROAD, UNIT 275
K2E 7J6
OTTAWA, ONTARIO
T. 613 727 8226

ARCHITECTURAL DRAWING LIST

A000 COVER SHEET
A010 PLAN OF SURVEY

A100 SITE PLAN, ZONING CHART AND PROJECT STATISTICS
A101 SITE DETAILS
A110 OBC DATA MATRIX

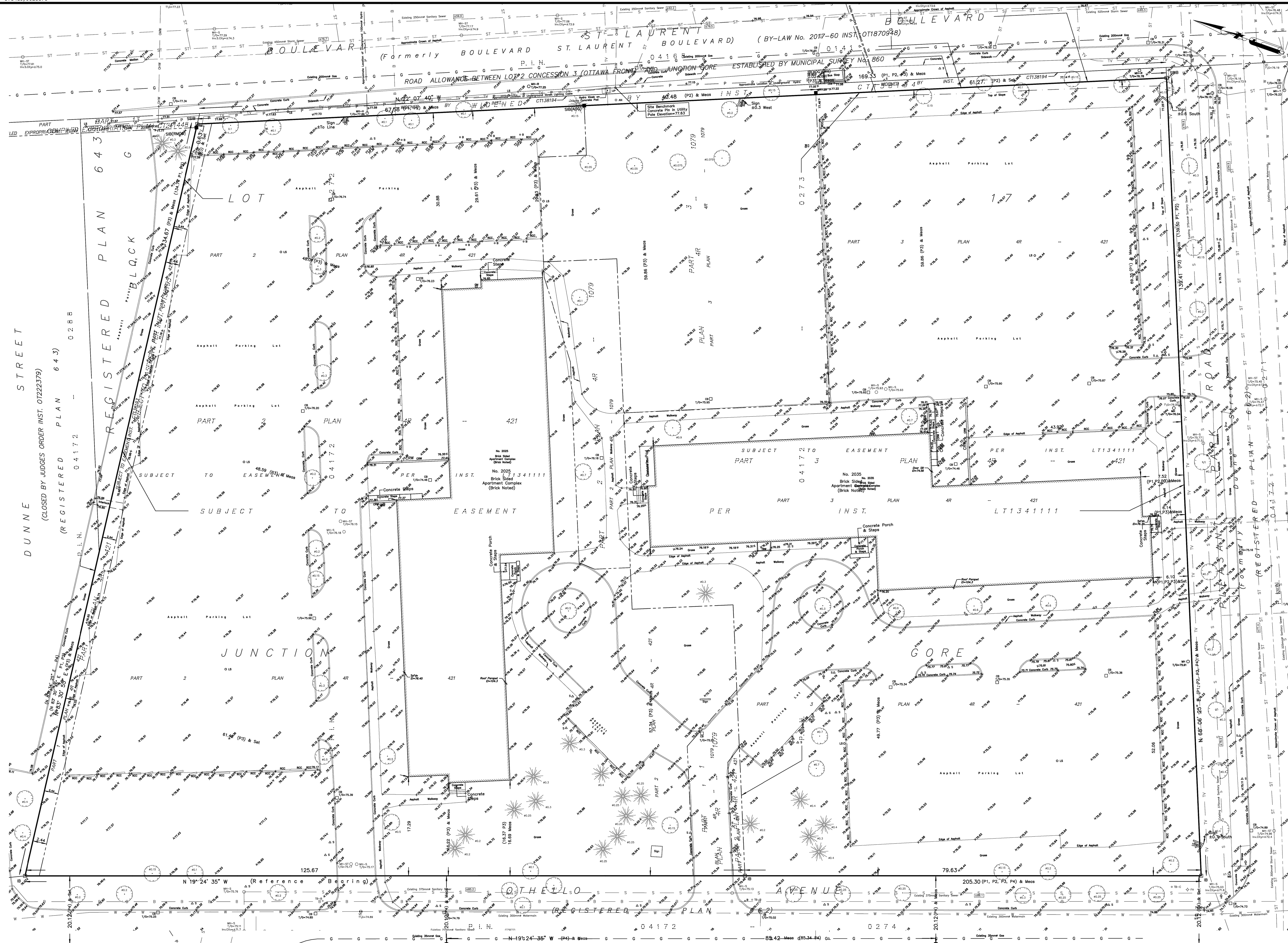
A300 PRELIMINARY FLOOR PLANS

A400 BUILDING ELEVATIONS

APRIL 13, 2016 RE-ISSUED FOR SPA

PLOT DATE April 13, 2026

373489, 5028870



**SURVEYOR'S REAL PROPERTY REPORT
PART 1 Plan of**
**PART OF LOT 17
JUNCTION GORE
GEOGRAPHIC TOWNSHIP OF GLOUCESTER
CITY OF OTTAWA**

FARLEY, SMITH & DENIS SURVEYING LTD. 2021
Scale 1: 300
0 5 10 15 20 25 30 metres

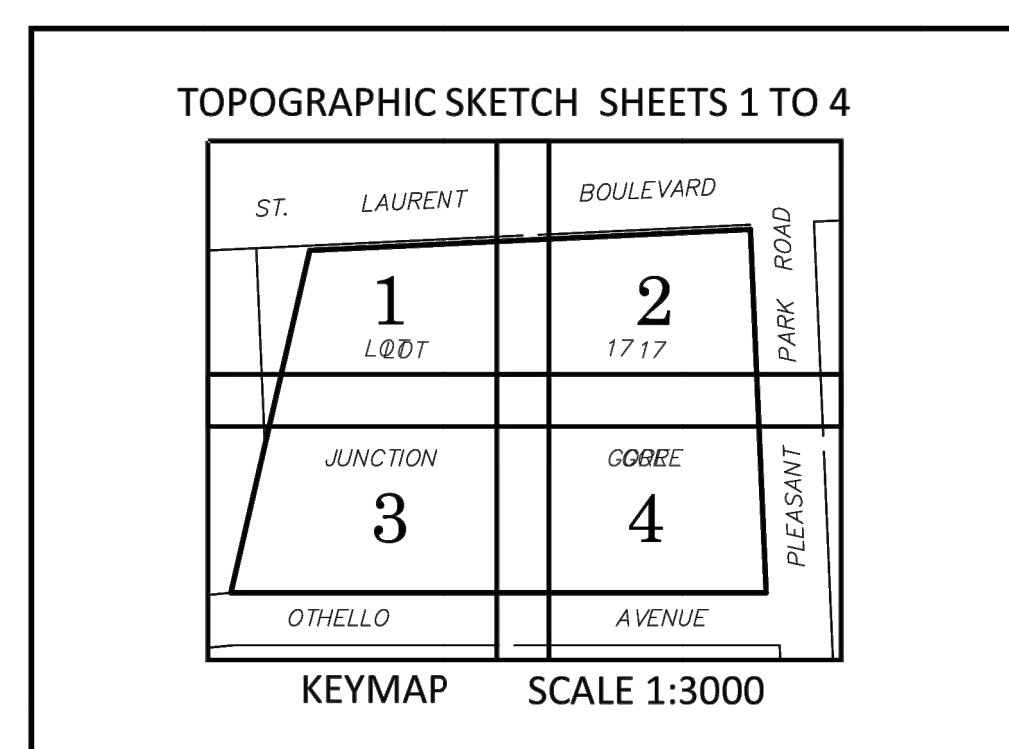
Metric Note
Distances and coordinates on this plan are in metres and can be converted to feet by dividing by 0.3048.

Distance Note
Distances shown on this plan are ground distances and can be converted to grid distances by multiplying by the combined scale factor of 0.99995.

Bearing Note
Bearings hereon are grid bearings derived from the Can-Net Real Time Network and are referred to the Central Meridian of MTM Zone 9 (17°30' West Longitude) Nad-83 (Original).

For bearing comparisons, a rotation of 0°37'05" counter-clockwise was applied to bearings on P1, P2, P3.
For bearing comparisons, a rotation of 0°36'35" counter-clockwise was applied to bearings on P4.

Boundary Note
This Plan is to be read in conjunction with a Topographic Sketch, Sheets 1 to 4 dated September 7, 2021. (FSD Ref. 407-21)



- Notes & Legend**
- Denotes:
- Survey Monument Planted
 - Survey Monument Found
 - Standard Iron Bar
 - Short Standard Iron Bar
 - Iron Bar
 - Witness
 - Measured
 - Plan 4R-421
 - Plan 4R-1079
 - Plan by (1315) dated January 23, 1990 (Ref. No. J-3314)
 - Registered Plan 662
 - Concrete Retaining Wall

WARNING NO PERSON MAY COPY, REPRODUCE, DISTRIBUTE OR ALTER THIS PLAN IN WHOLE OR IN PART WITHOUT THE WRITTEN PERMISSION OF FARLEY, SMITH & DENIS SURVEYING LTD. © FARLEY, SMITH & DENIS SURVEYING LTD., 2021.

- PART 2**
- REGISTERED RIGHTS-OF-WAY/EASEMENTS
P.I.N. 04172-0272 is subject to easements as described by Inst. CT138193 & LT1341111.
P.I.N. 04172-0273 is subject to easement as described by Inst. LT1341111.
 - PROPERTY IMPROVEMENTS
Signs are displayed from the property lines by up to 0.7m.
See plan for location
 - COMPLIANCE WITH MUNICIPAL ZONING BYLAWS
Compliance is not certified by this report.
 - ADDITIONAL REMARKS
The building ties are to the surfaces noted on the plan.

THIS REPORT WAS PREPARED FOR:
OTHELLO APARTMENTS LTD. ("The Client"), the Client's solicitors, mortgages, and other related parties. The undersigned accepts no responsibility for use by other parties. See Part 2 of this Report.

Surveyor's Certificate
I certify that:
1. This survey and plan are correct and in accordance with the Survey Act, the Surveyors Act and the Regulations made under them.
2. The survey was completed on the 7th day of September, 2021.

2021-09-07
Date
Daniel Robinson
Daniel Robinson
Ontario Land Surveyor

FARLEY, SMITH & DENIS SURVEYING LTD.
ONTARIO LAND SURVEYORS
CANADA LAND SURVEYORS
Unit 275, 30 COLONNADE ROAD, OTTAWA, ONTARIO K2E 7J6
TEL. (613) 727-8226 E-mail: fdsurveys@bellnet.ca

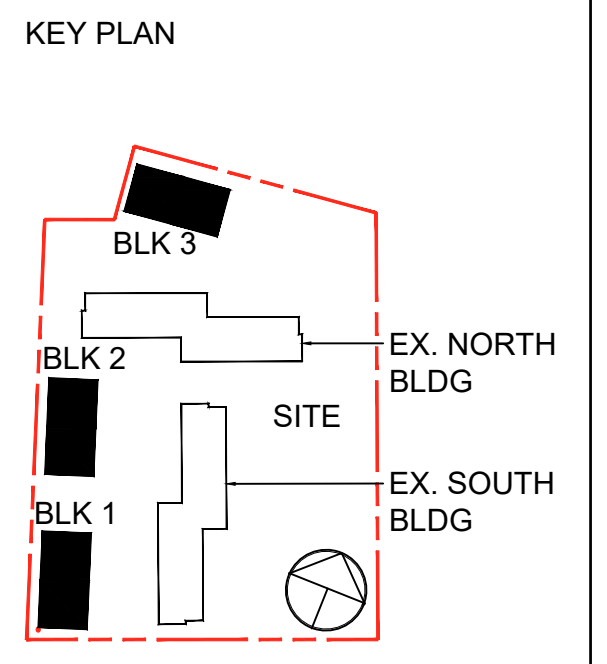
LOT 1230	LOT 1262	LOT 1263	LOT 1264	LOT 1265	LOT 1266	LANE	LOT 1267	LOT 1268	LOT 1269	
	REGISTERED PLAN									
					PART 1 PLAN 5R-6013		PART 3 PLAN 662			

THESE DRAWINGS ARE NOT TO BE SCALED.
ALL DIMENSIONS MUST BE VERIFIED BY CONTRACTOR PRIOR TO COMMENCEMENT OF ANY WORK. ANY DISCREPANCIES MUST BE REPORTED IMMEDIATELY TO THE ARCHITECTS.
NO ARCHITECTURAL SYMBOLS INDICATED ON THE DRAWING ARE GRAPHIC REPRESENTATIONS ONLY.

NO.	DATE	REVISION FOR
1	05 09 25	ISSUED FOR SPA
2	12 12 25	SPA RE-SUBMISSION
3	11 02 26	SPA RE-SUBMISSION
4	13 04 26	SPA RE-SUBMISSION

ADDITIONAL NOTES
THE DRAWING, AS AN INSTRUMENT OF SERVICE, IS PROVIDED BY AND IS THE PROPERTY OF S&D ARCHITECTS INC. THE CONTRACTOR MUST VERIFY AND ACCEPT RESPONSIBILITY FOR ALL DIMENSIONS AND CONDITIONS ON SITE AND MUST NOTIFY S&D ARCHITECTS INC. OF ANY VARIATIONS FROM THE SUPPLIED INFORMATION SHOWN ON THE DRAWING PRIOR TO ANY COMMENCEMENT OF WORK. THE CONTRACTOR IS RESPONSIBLE FOR OBTAINING ALL NECESSARY PERMITS AND APPROVALS FROM THE APPLICABLE GOVERNMENT AGENCIES PRIOR TO COMMENCING ANY WORK. CONSTRUCTION MUST CONFORM TO ALL APPLICABLE CODES AND REGULATIONS OF THE APPLICABLE JURISDICTION. UNDER NO CIRCUMSTANCES SHALL THE ARCHITECTS BE HELD RESPONSIBLE FOR ANY UNDERTAKEN OTHERWISE NOTED, NO INVESTIGATION HAS BEEN OR REPORTED ON BY THE OFFICE REGARDING THE ENVIRONMENTAL CONDITIONS OF THE SITE.

CONDITIONS FOR ELECTRONIC INFORMATION TRANSFER
ELECTRONIC INFORMATION IS SUPPLIED TO THE OTHER ASSOCIATED PARTIES TO ASSIST THEM IN THEIR WORK. THE RECIPIENT PARTIES MUST OBTAIN THE DATA FROM THE SUPPLIER WITH THE UNDERSTANDING THAT THE INFORMATION IS PROVIDED IN RESPECT TO THEIR PARTICULAR RESPONSIBILITY.



PRELIMINARY
NOT FOR CONSTRUCTION

NO.	DATE	REVISION COMMENT

S&D ARCHITECTS INC. SHALL NOT BE RESPONSIBLE FOR:
1. ERRORS, OMISSIONS, INCOMPLETENESS DUE TO LOSS OF INFORMATION IN WHOLE OR PART BY OTHER INFORMATION TRANSFERRING.
2. TRANSMISSION OF ANY FILE OR DAMAGE TO RECEIVED ELECTRONIC SYSTEM INFORMATION OR TRANSFERRED.

S&D ARCHITECTS
8395 JANE STREET, SUITE 202
VAUGHAN, ONTARIO L4K 5Y2
PHONE: 905.417.5515 FAX: 905.417.2517

STAMP: **ASSOCIATION OF ONTARIO LAND SURVEYORS**
LAND SURVEYORS PLAN SUBMISSION FORM
V-15575
APR 13 2026

CLIENT: **OSGOODE PROPERTIES**
1284 Wellington Street West, Ottawa, Ont.
Tel: 613-729-0656

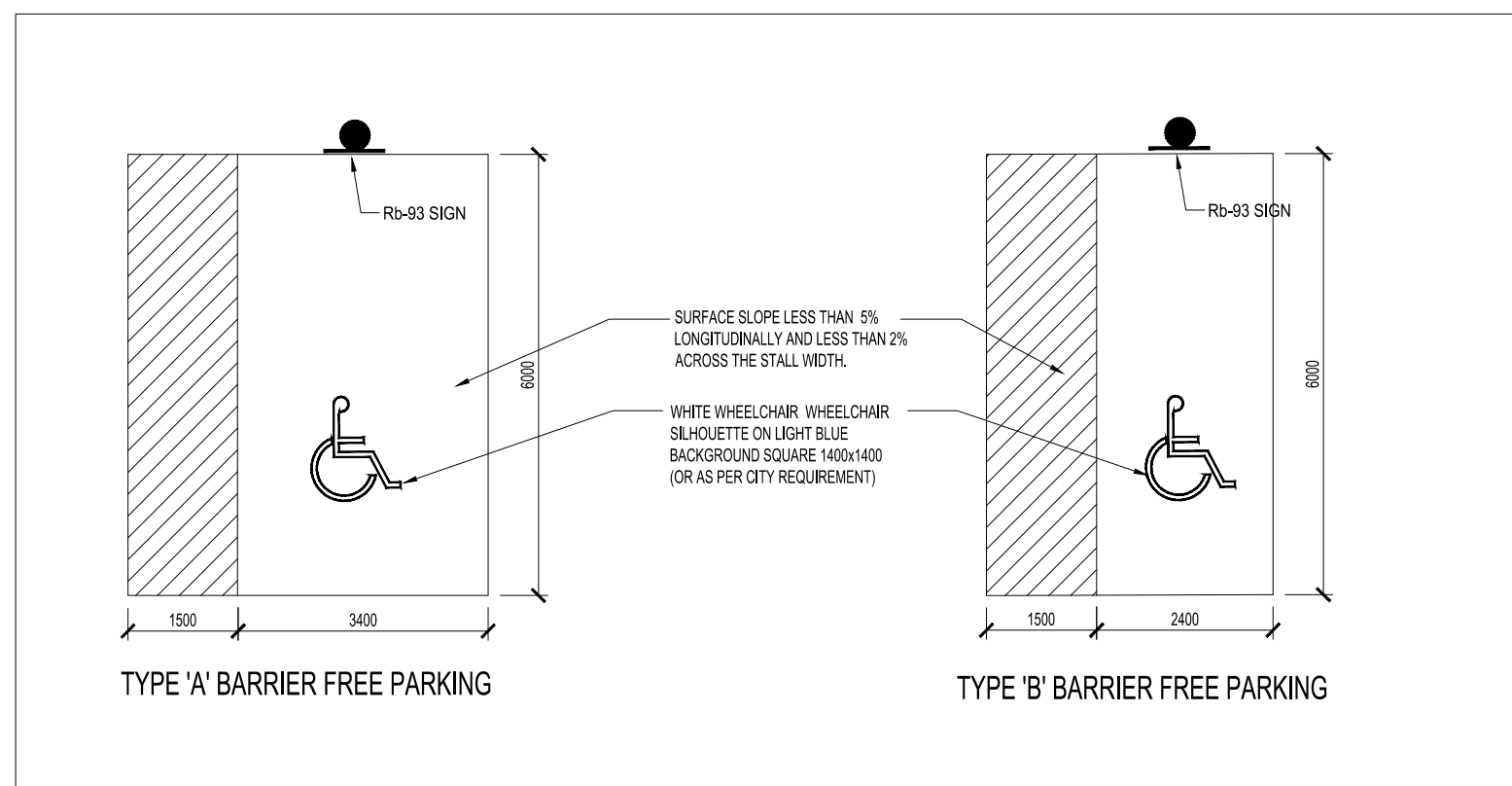
PROJECT: **OSGOODE STACKS**
2025 OTHELLO AVE.
OTTAWA, ONTARIO

DRAWING TITLE: **PLAN OF SURVEY**

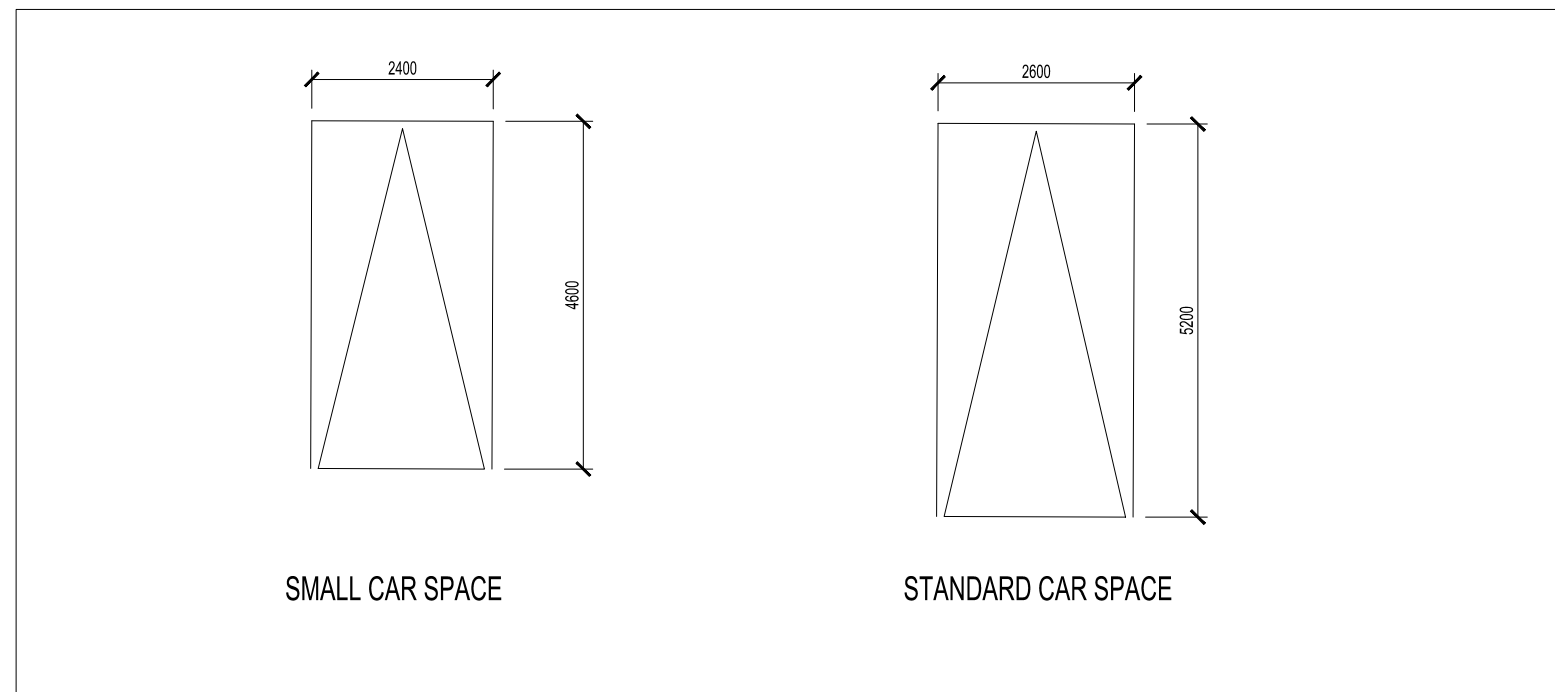
DATE: 2025.06.26 SCALE: AS INDICATED

DRAWN BY: - CHECKED BY: BK

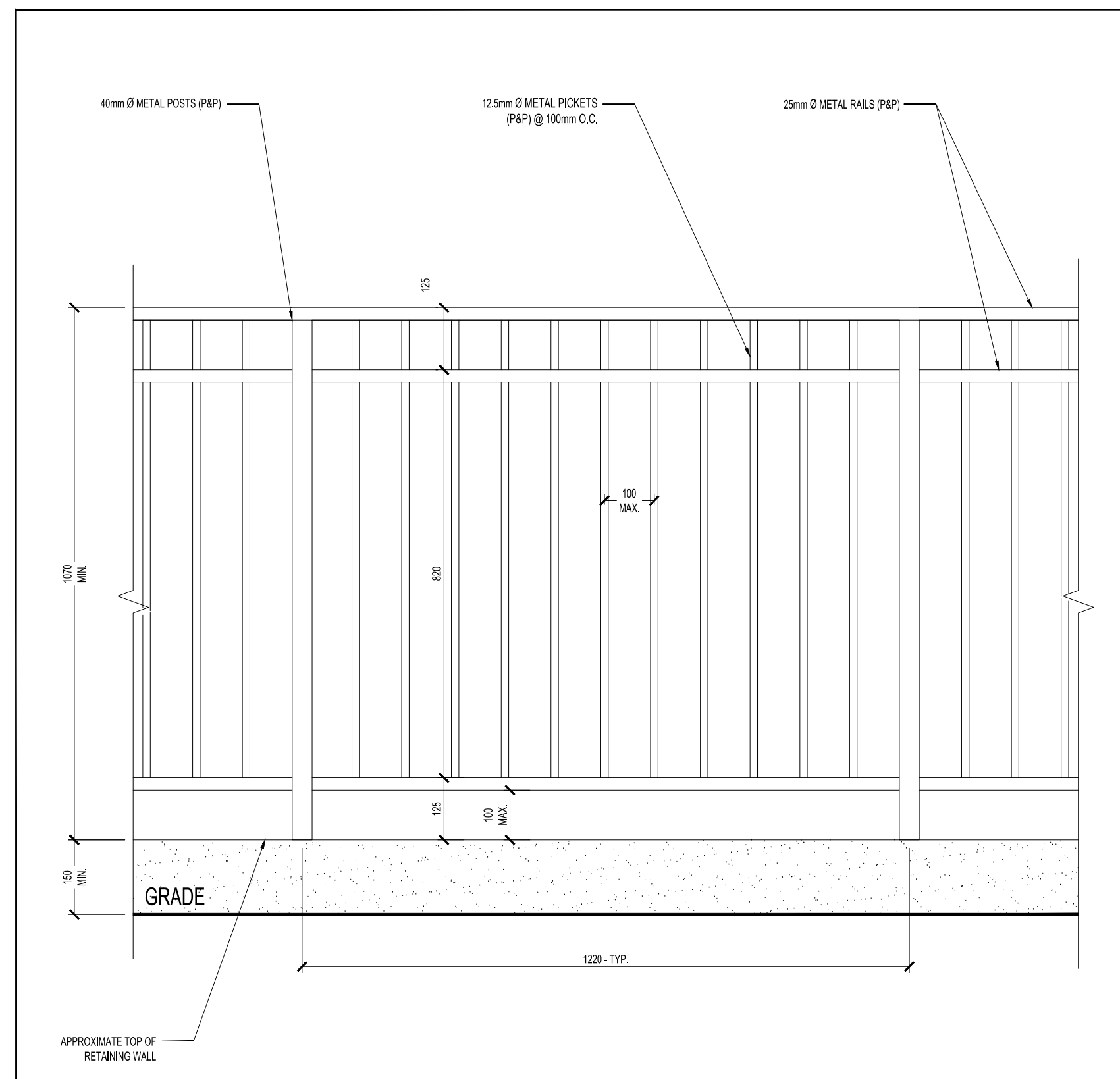
PROJECT NUMBER: S24016 DRAWING NUMBER: A010



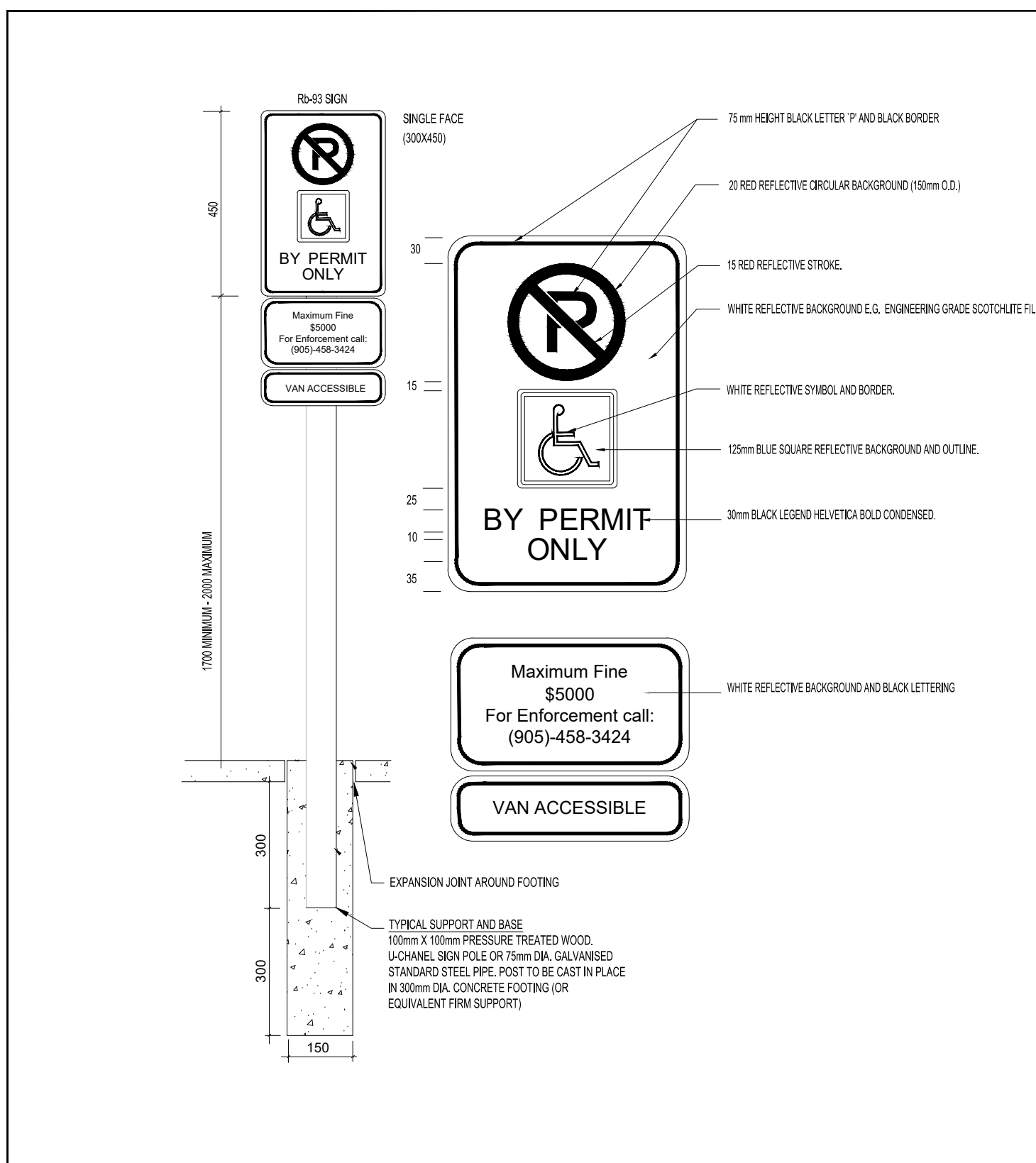
14 ACCESSIBLE PARKING STALLS
SCALE: NTS



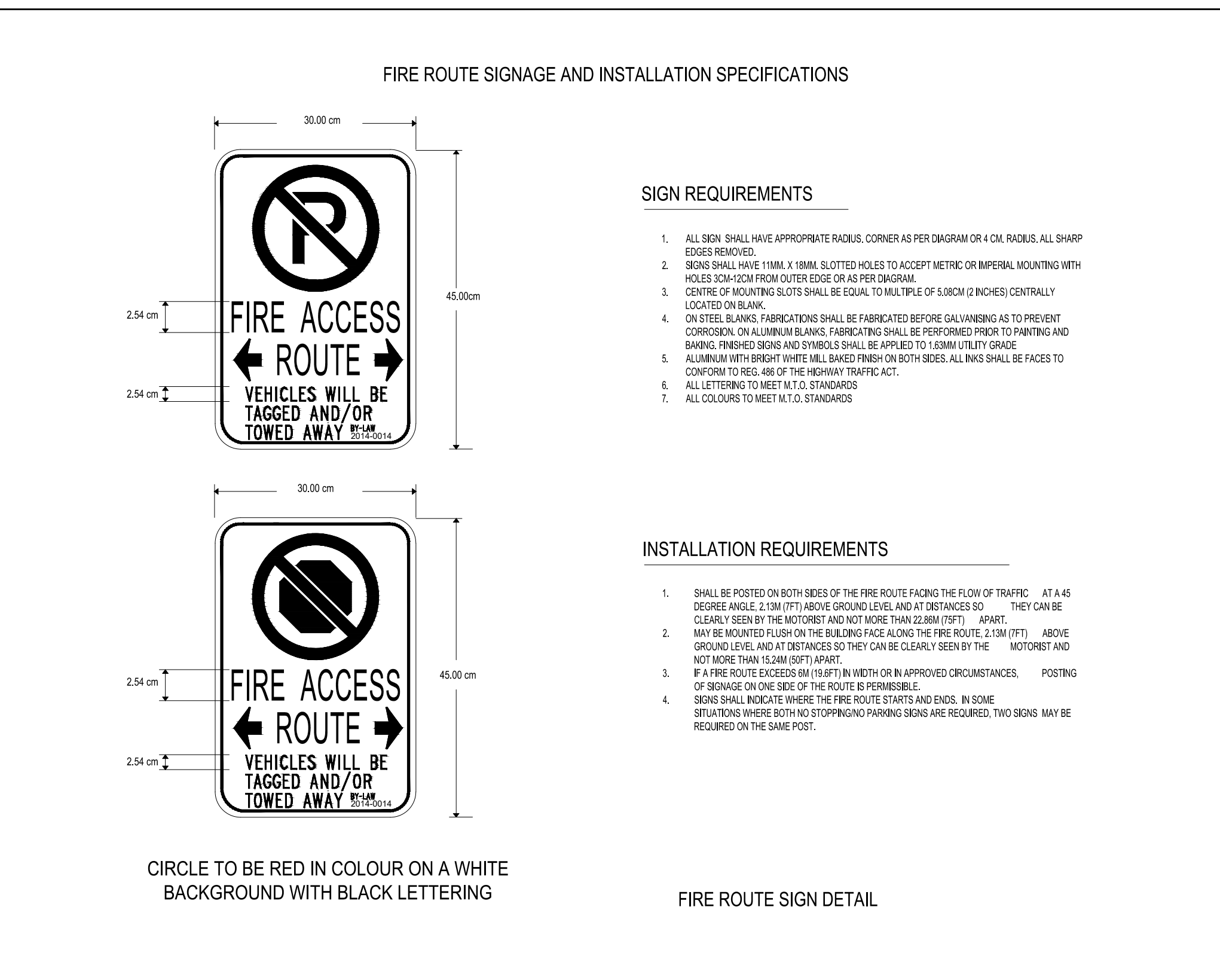
13 PARKING STALLS DIMENSIONS
SCALE: NTS



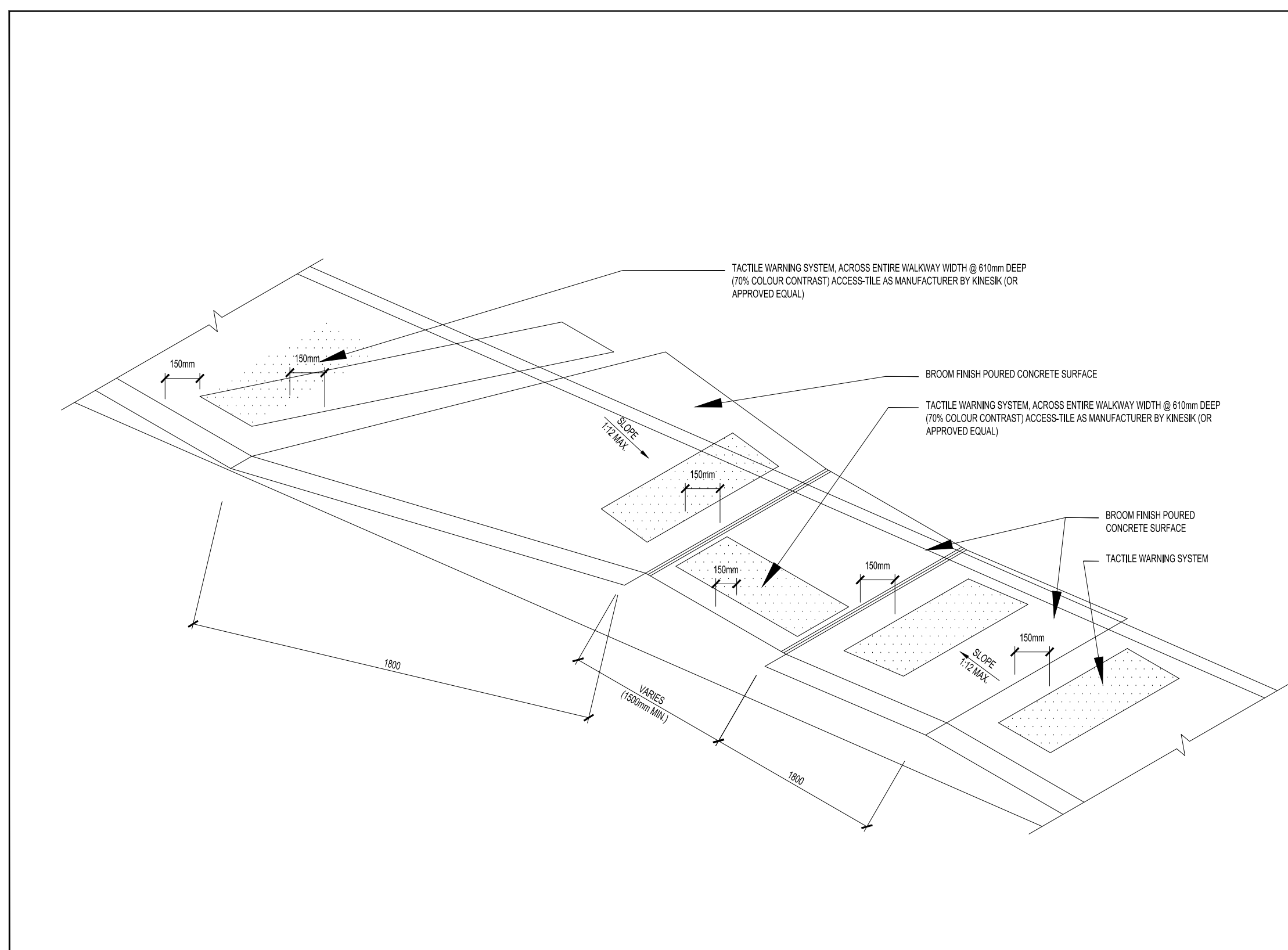
12 TYPICAL GUARD ON RETAINING WALL
SCALE: 1:10



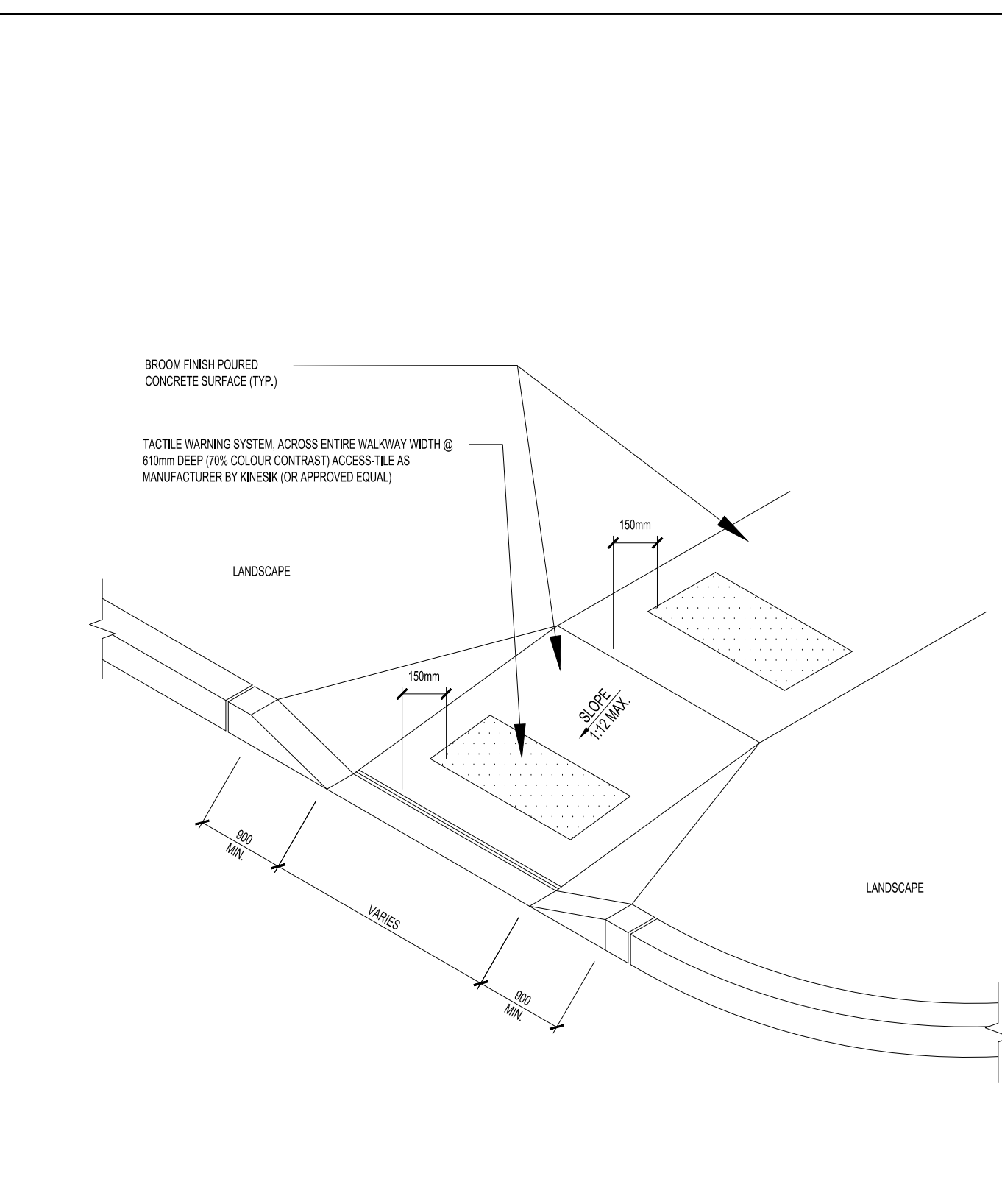
11 TYPICAL BARRIER-FREE SIGNAGE. TO BE VERIFIED BY THE MUNICIPALITY
SCALE: NTS



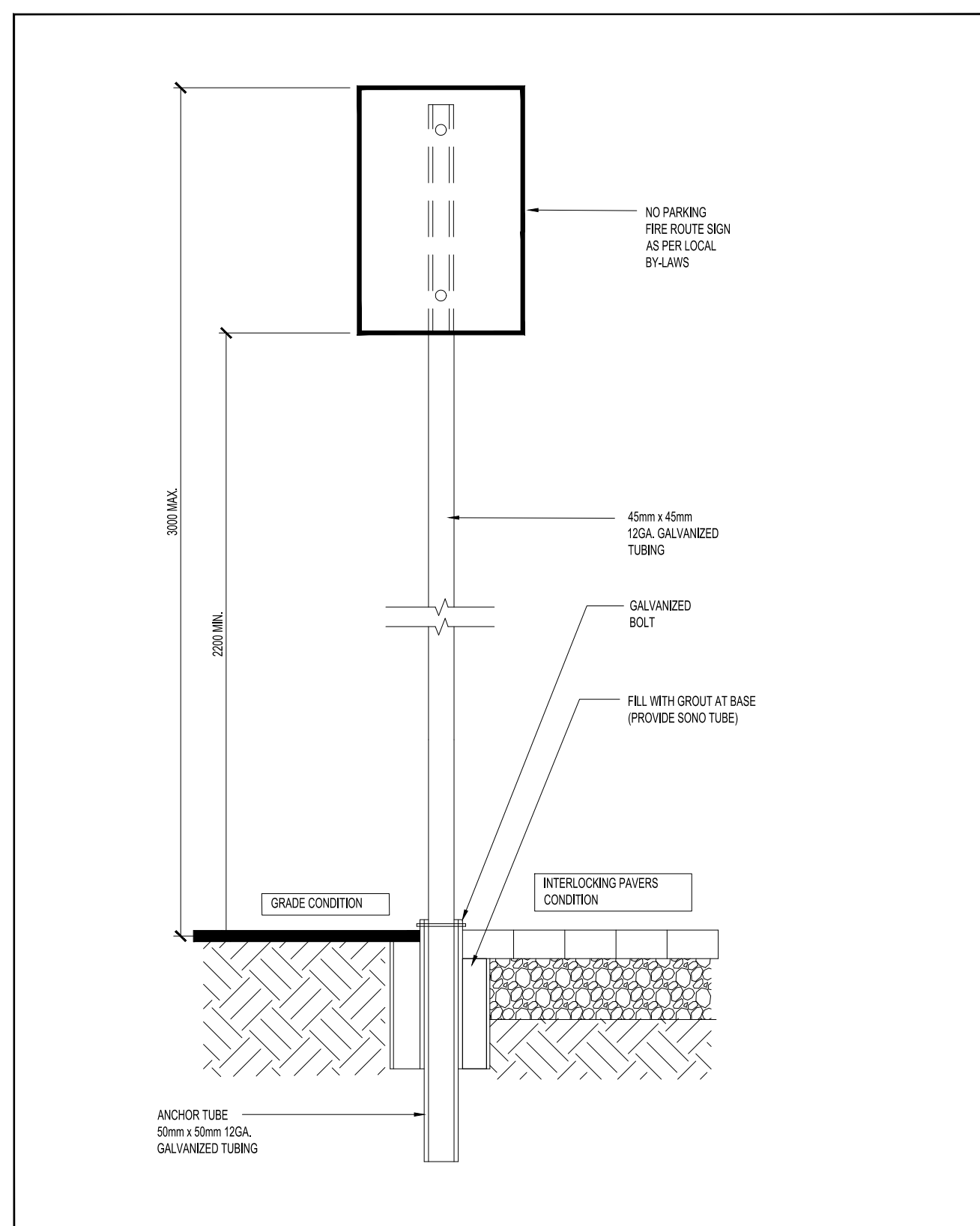
10 TYPICAL FIRE ROUTE SIGNAGE. TO BE VERIFIED BY THE MUNICIPALITY
SCALE: NTS



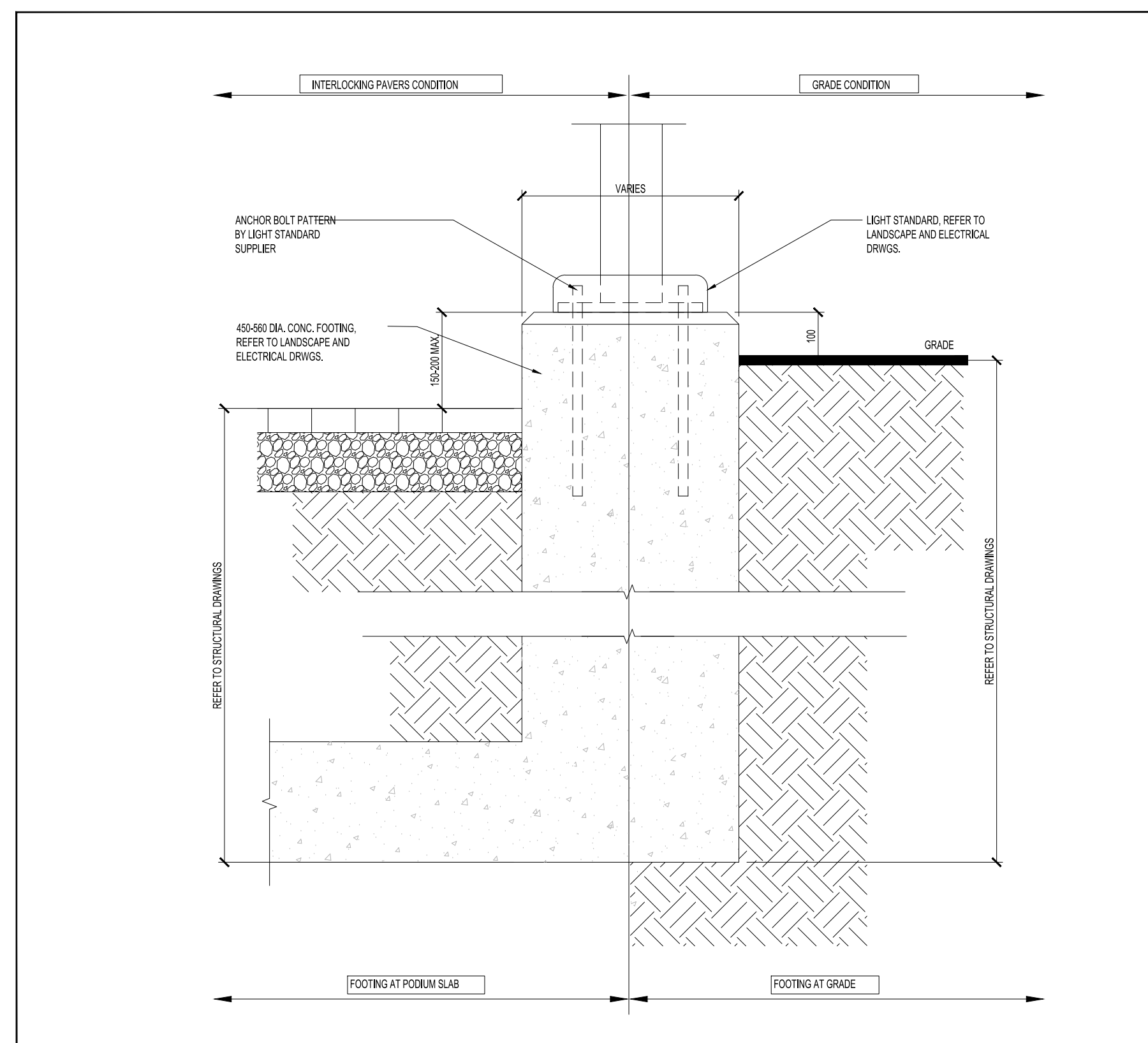
9 BARRIER FREE CURB CUT
SCALE: NTS



4 TYP. CONCRETE CURB
SCALE: 1:10



8 FIRE ROUTE SIGN - SUPPORT BASE
SCALE: 1:10



7 LIGHT STANDARD POLE BASE DETAIL
SCALE: 1:10

6 MOLOK WASTE MANAGEMENT SYSTEMS AND FINISHES
SCALE: NTS

Capacity	Container division options	Dimensions of the opening	Lifting equipment options	Suitable waste fractions
3 m ³		Filling hole size min. 100 x 350 mm, max. 600 mm	Lifting bag Reinforced lifting bag for glass	Mixed waste, paper, metal and glass

Framing options

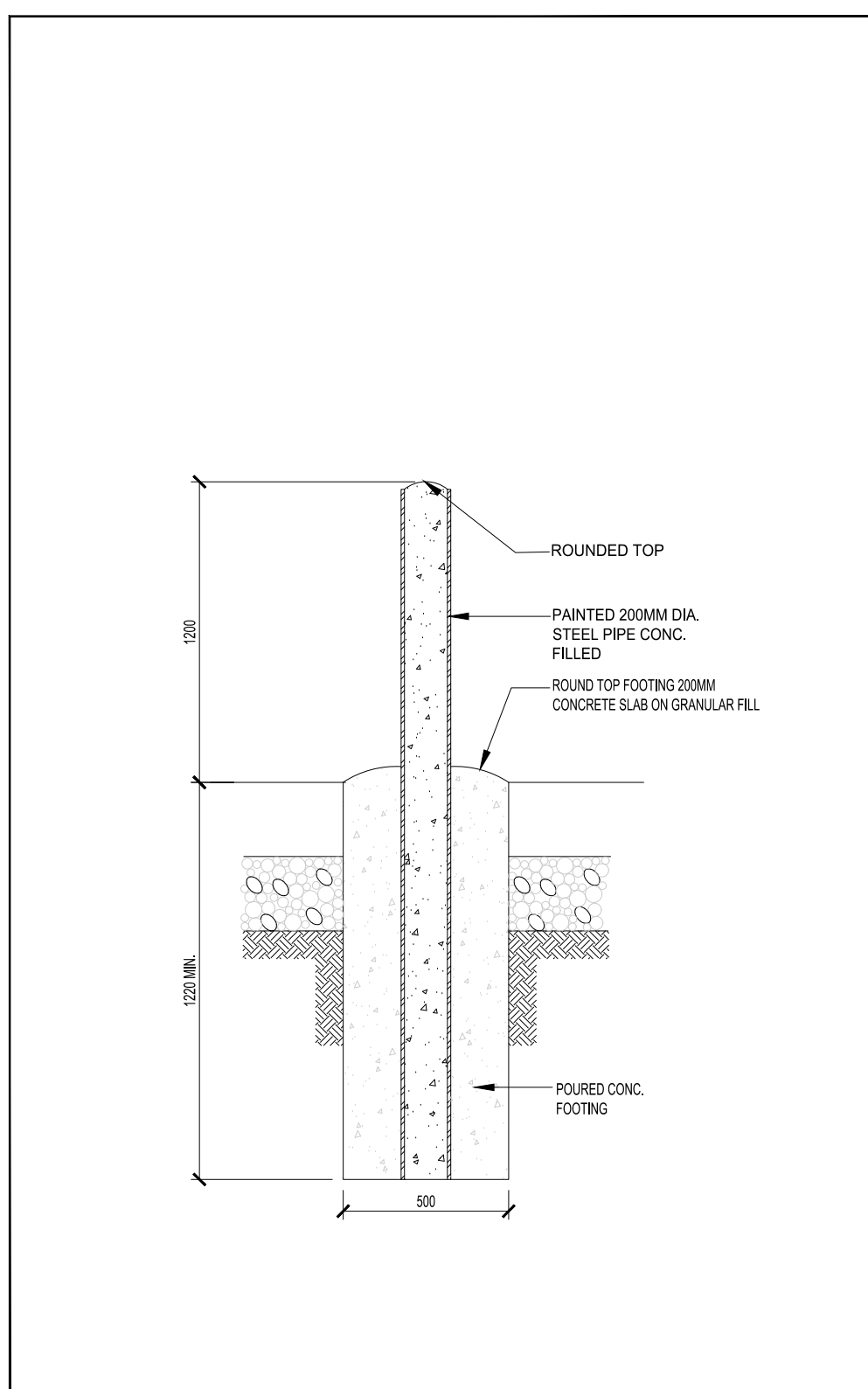
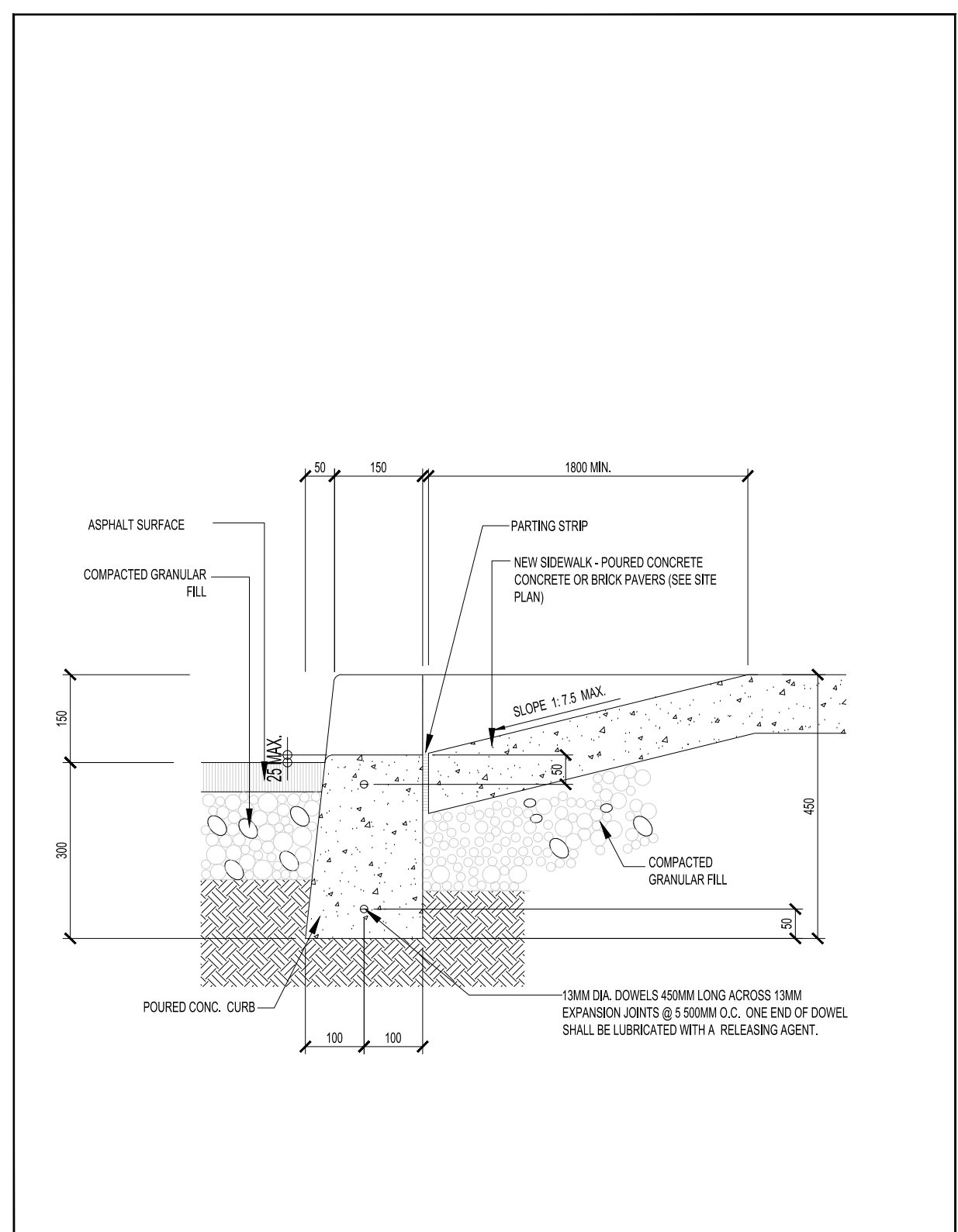
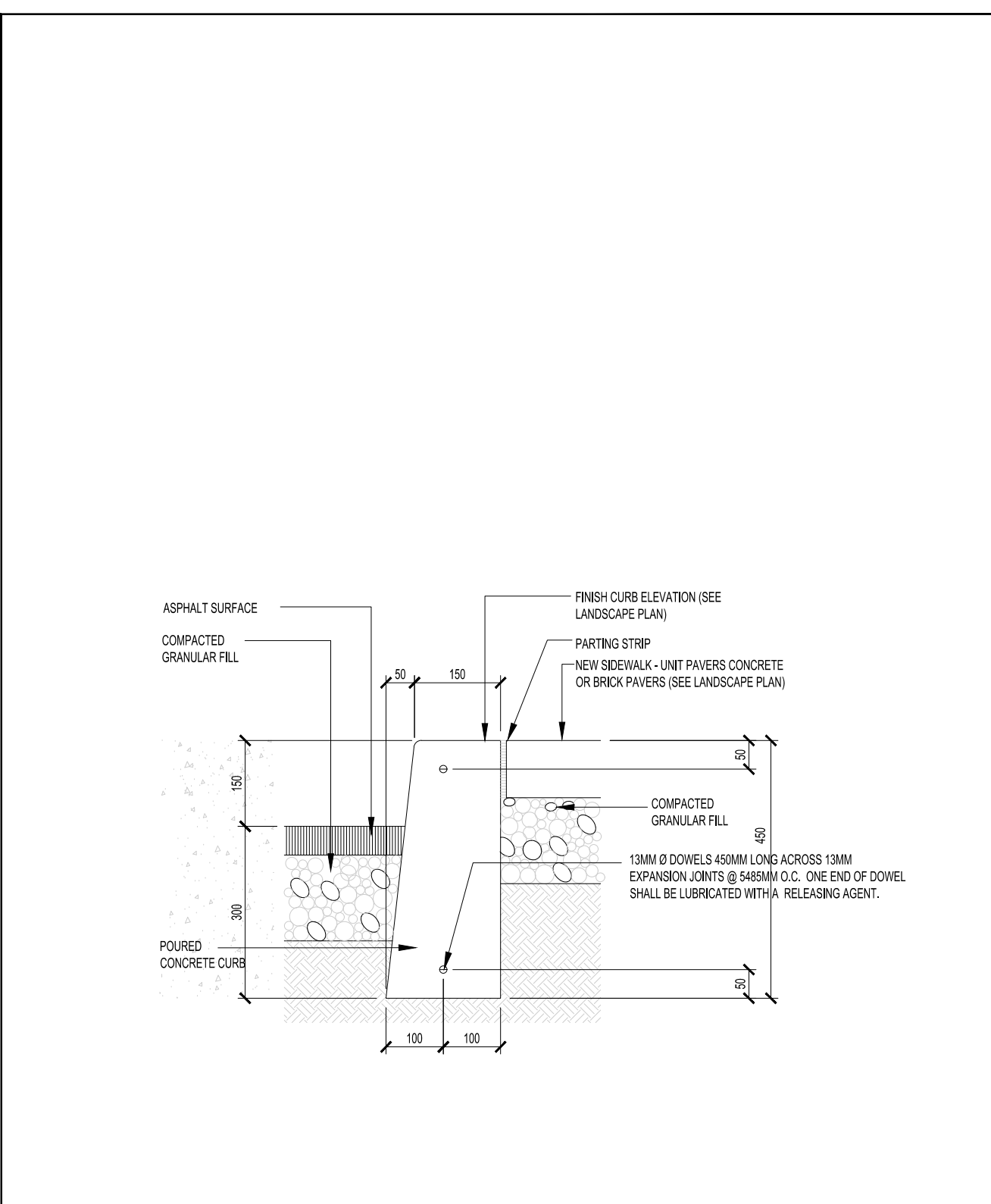
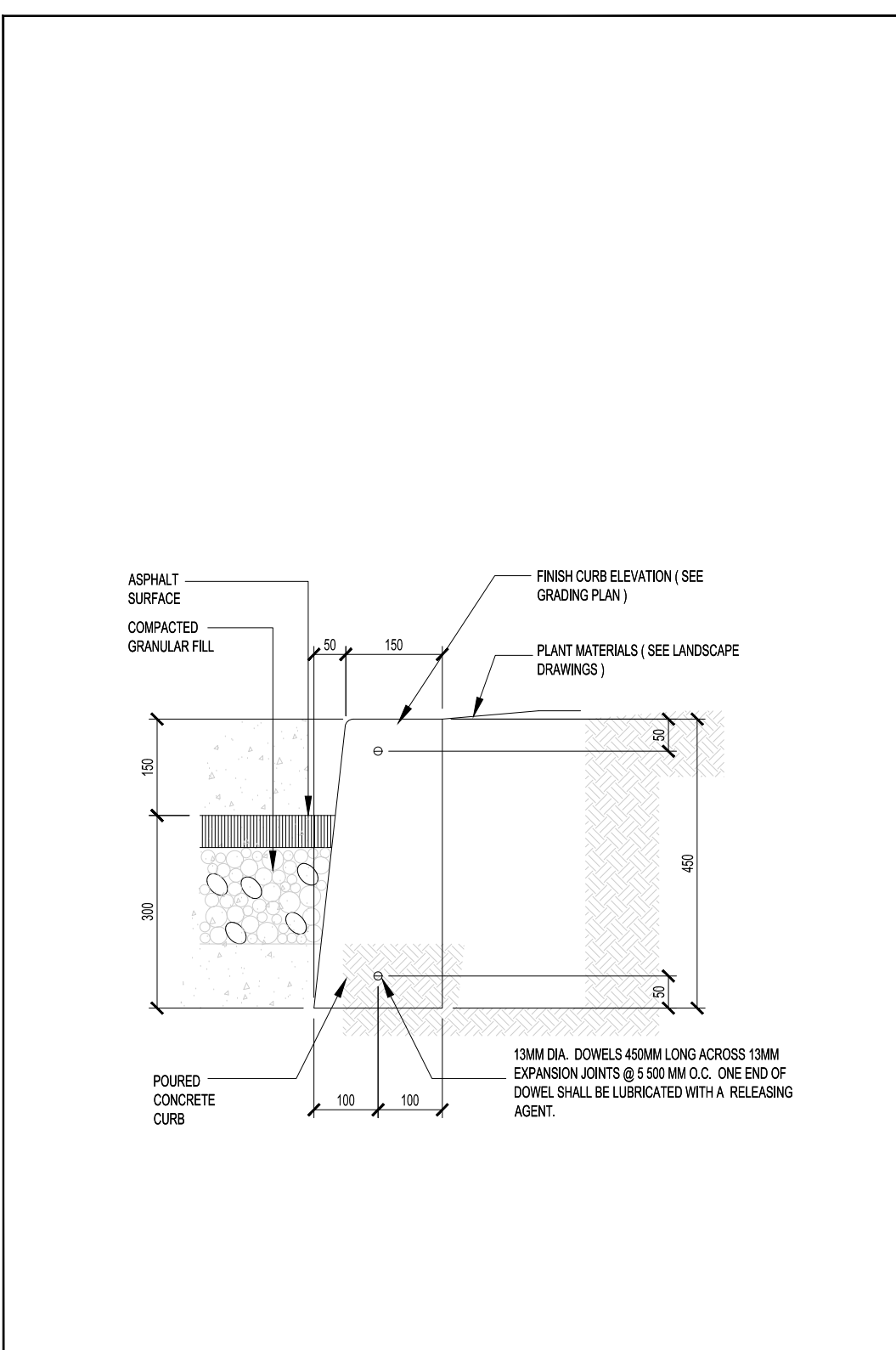
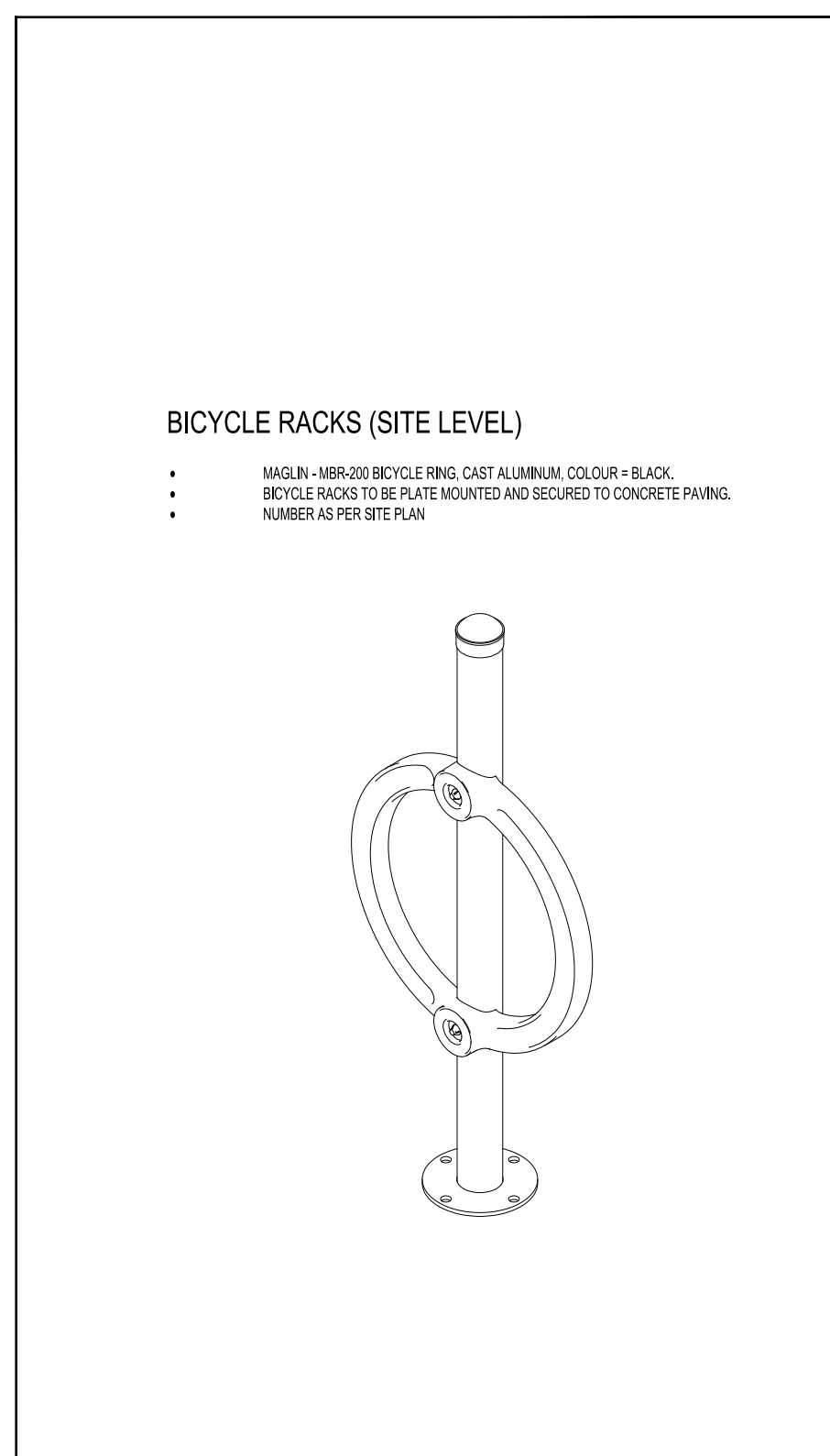
- EcoFrame: Recycled plastic colours
- AluFrame: Aluminium Natural and RAL colours
- PrisFrame: Structure panel Customizable printing
- CustomFrame: Customizable material

EcoFrame colours

- Midnight black
- Graphite grey
- Coffee brown
- Brick brown

Colour options for filling lids

- Black (standard)
- Dark grey
- Yellow
- Green
- Blue
- Brown
- Red
- White
- Orange



THESE DRAWINGS ARE NOT TO BE SCALED.
ALL DIMENSIONS MUST BE VERIFIED BY CONTRACTOR PRIOR TO COMMENCEMENT OF ANY WORK. ANY DISCREPANCIES MUST BE REPORTED IMMEDIATELY TO SRN ARCHITECTS INC. ALL ARCHITECTURAL SYMBOLS INDICATED ON THE DRAWING ARE GRAPHIC REPRESENTATIONS ONLY.

NO.	DATE	ISSUED FOR
1	05 09 25	ISSUED FOR SPA
2	12 12 25	SPA RE-SUBMISSION
3	11 02 26	SPA RE-SUBMISSION
4	13 04 26	SPA RE-SUBMISSION

ADDITIONAL NOTES

THE DRAWING, AS AN INSTRUMENT OF SERVICE, IS PROVIDED BY AND IS THE PROPERTY OF SRN ARCHITECTS INC. THE CONTRACTOR MUST OBTAIN AND ACCEPT RESPONSIBILITY FOR ALL DIMENSIONS AND CONDITIONS ON SITE AND MUST NOTIFY SRN ARCHITECTS INC. OF ANY VARIATIONS FROM THE SUPPLIED INFORMATION. SRN ARCHITECTS INC. IS NOT RESPONSIBLE FOR THE ACCURACY OF SURVEY, STRUCTURAL, MECHANICAL, ELECTRICAL, ETC. ENGINEERING INFORMATION SHOWN ON THIS DRAWING. REVISIONS TO APPROPRIATE ENGINEERING DRAWINGS BEFORE PROCEEDING WITH ANY WORK. CONSTRUCTION MUST CONFORM TO ALL APPLICABLE CODES AND REQUIREMENTS OF THE APPLICABLE ENGINEERING JURISDICTION. UNLESS OTHERWISE NOTED, NO INVESTIGATION HAS BEEN OR REPORTED ON BY THE OFFICE IN REGARD TO THE ENVIRONMENTAL CONDITIONS OF THIS SITE.

CONDITIONS FOR ELECTRONIC INFORMATION TRANSFER

ELECTRONIC INFORMATION IS SUPPLIED TO THE OTHER ASSOCIATED PARTIES TO ASSIST THEM IN THE EXECUTION OF THEIR WORK. THE RECIPIENT PARTIES MUST DETERMINE THE CLARITY AND RELIABILITY OF THE INFORMATION IN RESPECT TO THEIR PARTICULAR RESPONSIBILITY.

PRELIMINARY NOT FOR CONSTRUCTION

NO.	DATE	REVISION COMMENT

SRN ARCHITECTS INC. SHALL NOT BE RESPONSIBLE FOR:

- ERRORS, OMISSIONS, INCOMPLETENESS DUE TO LOSS OF INFORMATION IN WHOLE OR PART WHEN INFORMATION IS TRANSFERRED.
- TRANSDISSEMINATION OF ANY FILE OR DAMAGE TO RECEIVING ELECTRONIC SYSTEM WHEN INFORMATION IS TRANSFERRED.

SRN ARCHITECTS
8395 JANE STREET, SUITE 202
VAUGHAN, ONTARIO L4K 5Y2
PHONE: 905.417.5515 FAX: 905.417.2517

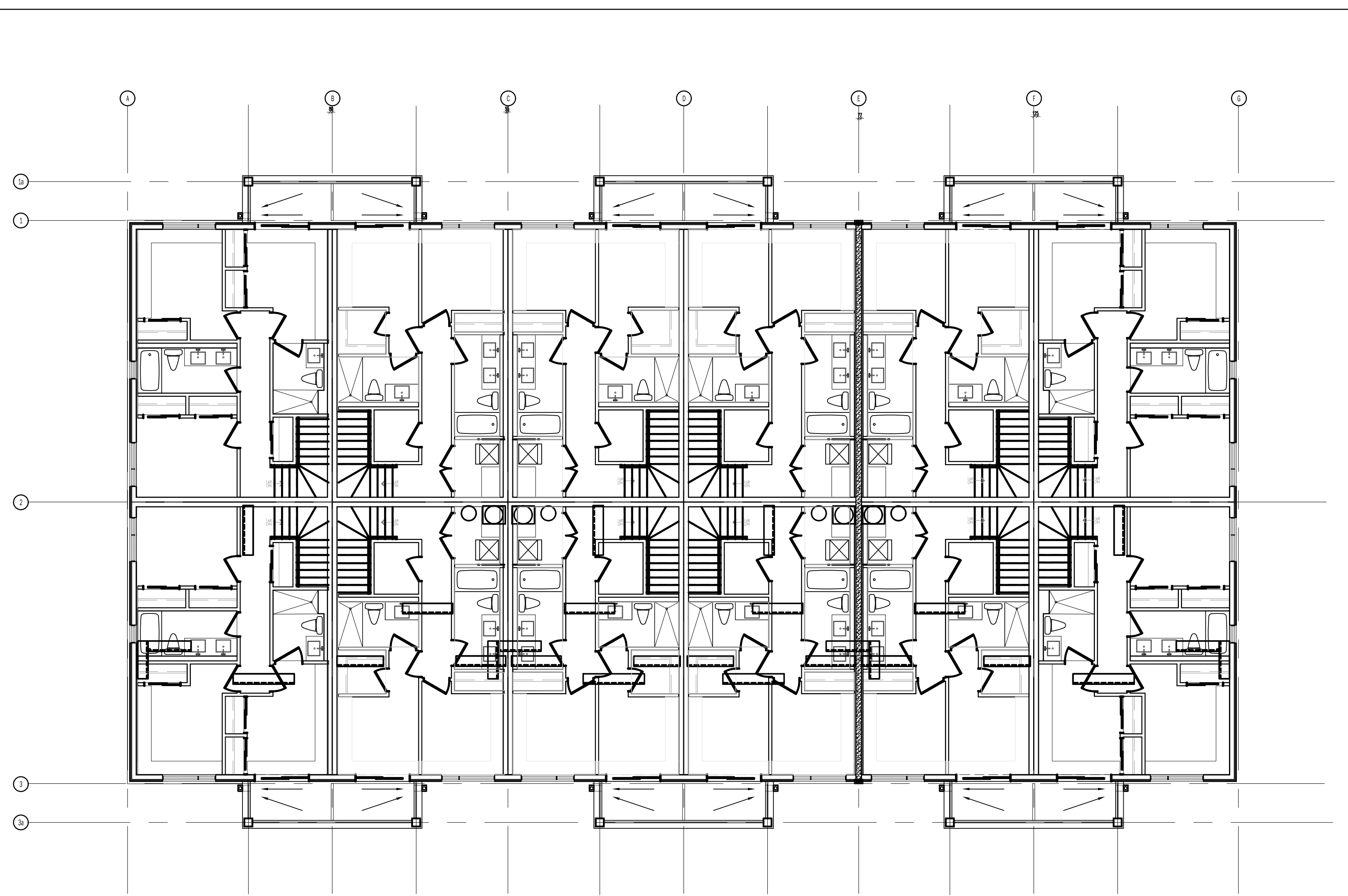
STAMP: **OSGOODE PROPERTIES ARCHITECTS INC.**
CREATED BY: PATRICK BRADY
DATE: April 13, 2026
© SRN ARCHITECTS INC. 2024

CLIENT: **OSGOODE PROPERTIES**
1284 Wellington Street West, Ottawa, Ont.
K1Y 3A8
Tel: 613-729-0656

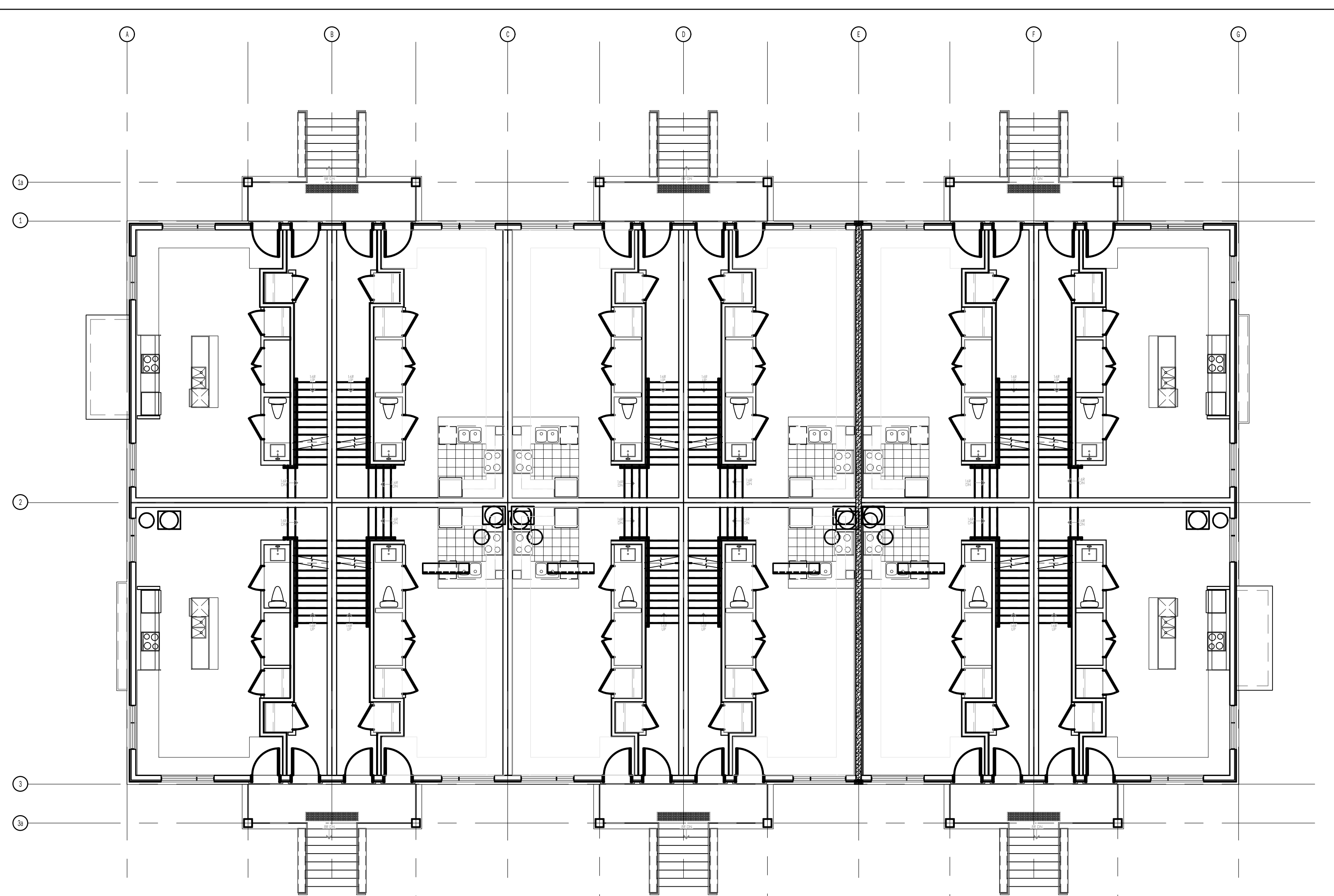
PROJECT: **OSGOODE STACKS**
2025 OTHELLO AVE.
OTTAWA, ONTARIO

DRAWING TITLE: **SITE DETAILS**

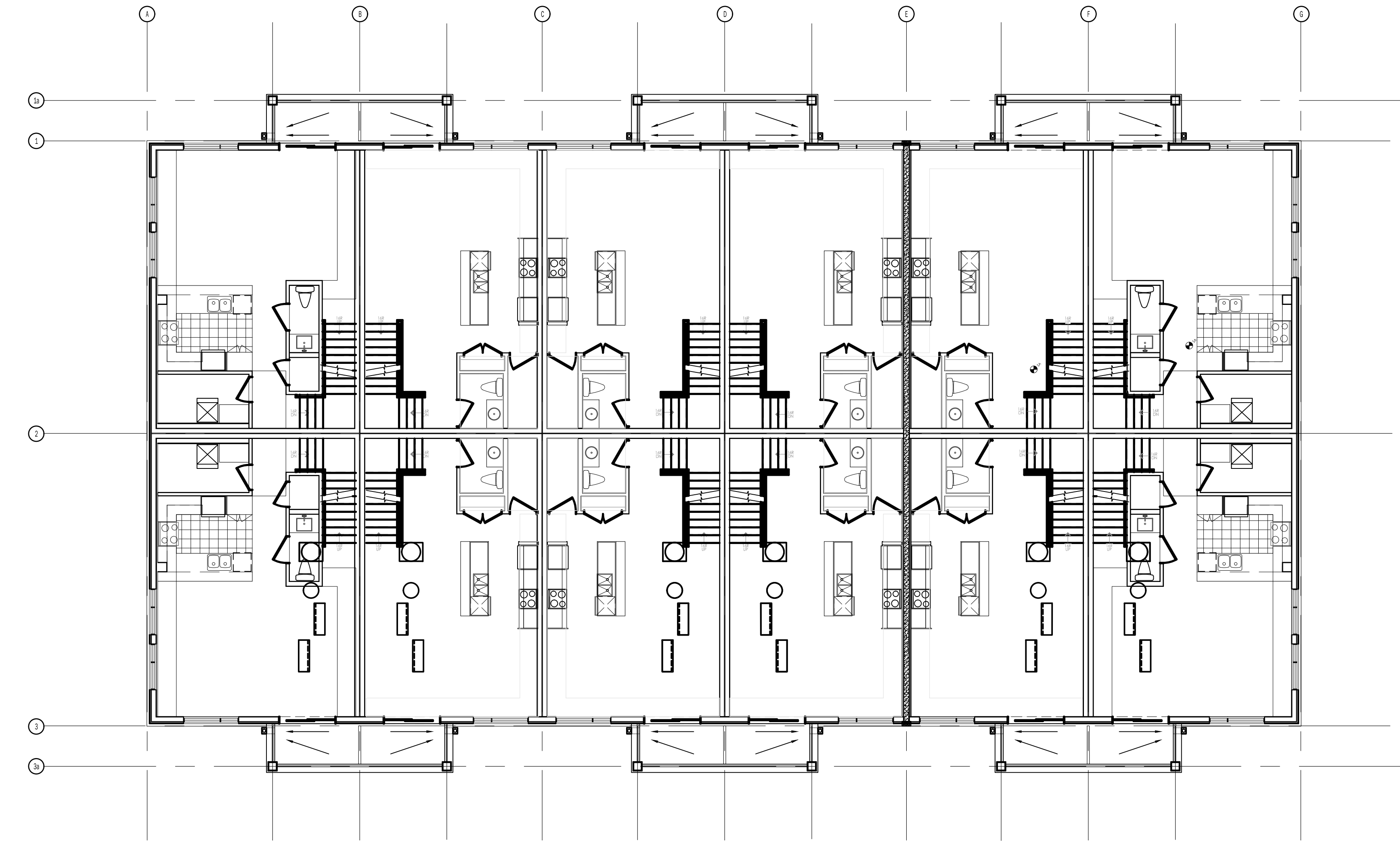
DATE: 2024.11.14 SCALE: AS NOTED
DRAWN BY: BK CHECKED BY: GF
PROJECT NUMBER: **S24016** DRAWING NUMBER: **A101**



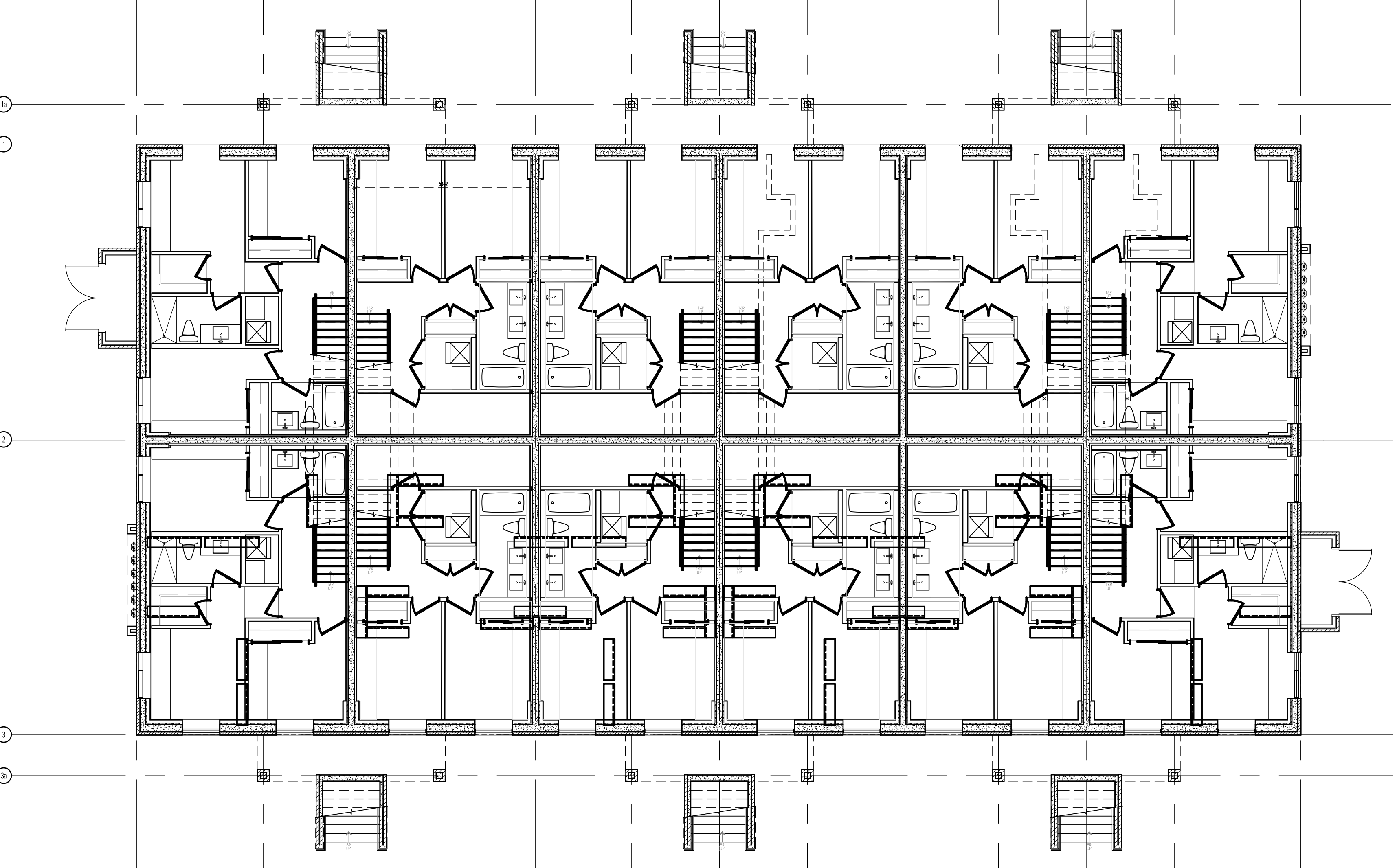
4 THIRD FLOOR PLAN
SCALE: 1:100



2 GROUND FLOOR PLAN
SCALE: 1:100



3 SECOND FLOOR PLAN
SCALE: 1:100



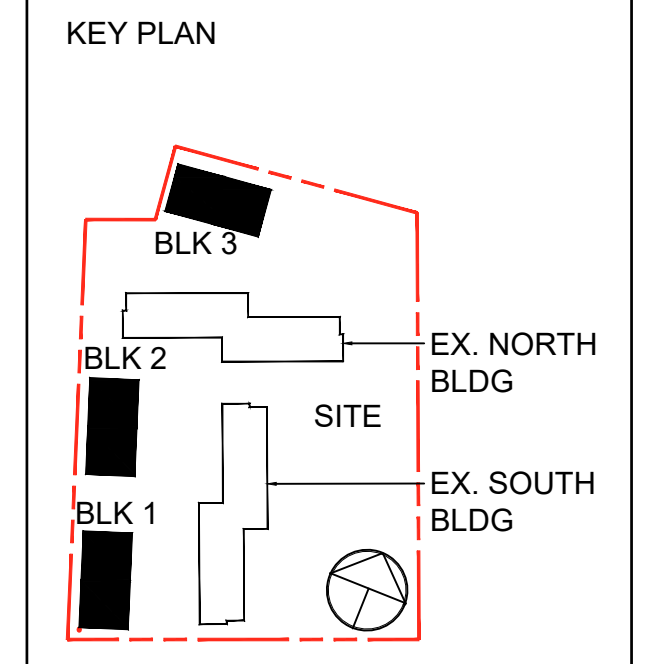
1 LOWER LEVEL FLOOR PLAN
SCALE: 1:100

THESE DRAWINGS ARE NOT TO BE SCALED.
ALL DIMENSIONS MUST BE VERIFIED BY CONTRACTOR PRIOR TO COMMENCEMENT OF ANY WORK. ANY DISCREPANCIES MUST BE REPORTED DIRECTLY TO SRN ARCHITECTS INC. ALL ARCHITECTURAL SYMBOLS INDICATED ON THE DRAWING ARE GRAPHIC REPRESENTATIONS ONLY.

NO.	DATE	REVISED FOR
1	05 09 25	ISSUED FOR SPA
2	12 12 25	SPA RE-SUBMISSION
3	11 02 26	SPA RE-SUBMISSION
4	13 04 26	SPA RE-SUBMISSION

ADDITIONAL NOTES:
THE DRAWING, AS AN INSTRUMENT OF SERVICE, IS PROVIDED BY AND IS THE PROPERTY OF SRN ARCHITECTS INC. THE CONTRACTOR MUST VERIFY AND ACCEPT RESPONSIBILITY FOR ALL DIMENSIONS AND CONDITIONS ON SITE AND MUST NOTIFY SRN ARCHITECTS INC. OF ANY VARIATIONS FROM THE SUPPLIED INFORMATION SHOWN ON THE DRAWING PRIOR TO ANY CONSTRUCTION. SRN ARCHITECTS INC. IS NOT RESPONSIBLE FOR THE ACCURACY OF SURVEY, STRUCTURAL, MECHANICAL, ELECTRICAL, ETC. ENGINEERING INFORMATION SHOWN ON THE DRAWING BEING TO APPROPRIATE ENGINEERING DRAWINGS BEFORE PROCEEDING WITH ANY WORK. CONSTRUCTION MUST CONFORM TO ALL APPLICABLE CODES AND REQUIREMENTS OF THE APPLICABLE JURISDICTION. UNLESS OTHERWISE NOTED, NO INVESTIGATION HAS BEEN OR REPORTED ON BY THE OFFICE REGARDING TO THE ENVIRONMENTAL CONDITIONS OF THE SITE.

CONDITIONS FOR ELECTRONIC INFORMATION TRANSFER:
ELECTRONIC INFORMATION IS SUPPLIED TO THE OTHER ASSOCIATED FIRMS TO ASSIST THEM IN THE EXECUTION OF THEIR WORKS. THE RECIPIENT FIRMS MUST DETERMINE THE QUALITY AND ACCURACY OF THE INFORMATION RECEIVED. THE INFORMATION IS PROVIDED AS IS AND WITHOUT WARRANTY OF ANY KIND. SRN ARCHITECTS INC. IS NOT RESPONSIBLE FOR THE INFORMATION IN RESPECT TO THEIR PARTICULAR RESPONSIBILITY.



PRELIMINARY
NOT FOR CONSTRUCTION

NO.	DATE	REVISION COMMENT

SRN ARCHITECTS INC. SHALL NOT BE RESPONSIBLE FOR:
1. ERRORS, OMISSIONS, INCOMPLETENESS DUE TO LOSS OF INFORMATION IN WHOLE OR PART WHEN INFORMATION IS TRANSFERRED.
2. TRANSMISSIONS OF ANY FILE OR DAMAGE TO RECEIVING ELECTRONIC SYSTEMS WHEN INFORMATION IS TRANSFERRED.

S:R:N
ARCHITECTS
8395 JANE STREET, SUITE 202
VAUGHAN, ONTARIO L4K 5Y2
PHONE: 905.417.5515 FAX: 905.417.5517

STAMP:
ONTARIO ASSOCIATION OF ARCHITECTS
REGISTERED PROFESSIONAL ARCHITECT
April 13, 2026
© SRN ARCHITECTS INC. 2024

CLIENT:
OSGOODE PROPERTIES
1284 Wellington Street West, Ottawa On.
K1Y 3A8
Tel: 613-729-0656

PROJECT:
OSGOODE STACKS
2025 OTHELLO AVE.
OTTAWA, ONTARIO

DRAWING TITLE:
PRELIMINARY FLOOR PLANS

DATE: 2025.06.26 SCALE: 1:100

DRAWN BY: AD CHECKED BY: BK

PROJECT NUMBER: S24016 DRAWING NUMBER: A300

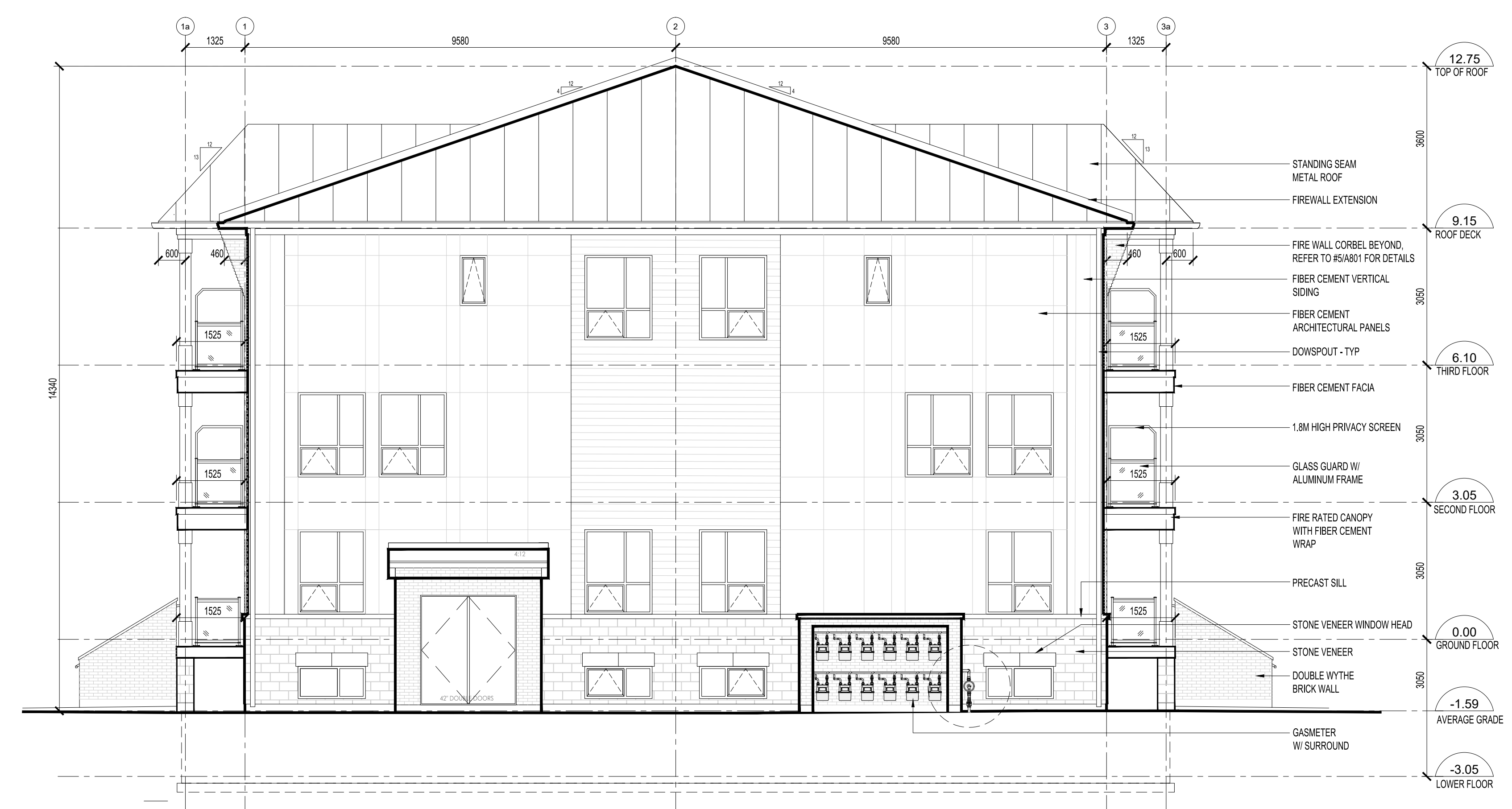
THESE DRAWINGS ARE NOT TO BE SCALED.
ALL DIMENSIONS MUST BE VERIFIED BY CONTRACTOR PRIOR TO COMMENCEMENT OF ANY WORK. ANY DISCREPANCIES MUST BE REPORTED IMMEDIATELY TO SRN ARCHITECTS INC. ALL ARCHITECTURAL SYMBOLS INDICATED ON THIS DRAWING ARE DRAWING REPRESENTATIONS ONLY.

NO.	DATE	REVISED FOR
1	05 09 25	ISSUED FOR SPA
2	12 12 25	SPA RE-SUBMISSION
3	11 02 26	SPA RE-SUBMISSION
4	13 04 26	SPA RE-SUBMISSION

ADDITIONAL NOTES
THE DRAWING, AS AN INSTRUMENT OF SERVICE, IS PROVIDED BY AND IS THE PROPERTY OF SRN ARCHITECTS INC. THE CONTRACTOR MUST VERIFY AND ASSUME RESPONSIBILITY FOR ALL DIMENSIONS AND CONDITIONS ON SITE AND MUST NOTIFY SRN ARCHITECTS INC. OF ANY VARIATIONS FROM THE SUPPLIED INFORMATION. SRN ARCHITECTS INC. IS NOT RESPONSIBLE FOR THE ACCURACY OF SURVEY, STRUCTURAL, MECHANICAL, ELECTRICAL, ETC. ENGINEERING INFORMATION SHOWN ON THE DRAWING REFER TO APPROPRIATE ENGINEERING DRAWINGS BEFORE PROCEEDING WITH ANY WORK. CONSTRUCTION MUST CONFORM TO ALL APPLICABLE CODES AND REGULATIONS OF THE JURISDICTION. UNDER NO CIRCUMSTANCES SHALL SRN ARCHITECTS INC. BE HELD RESPONSIBLE FOR THE CONSTRUCTION OF THIS PROJECT.
CONDITIONS FOR ELECTRONIC INFORMATION TRANSFER
ELECTRONIC INFORMATION IS SUPPLIED TO THE OTHER ASSOCIATED FIRMS TO ASSIST THEM IN THE EXECUTION OF THEIR WORK. HOWEVER, THE RECEIVING FIRMS MUST DETERMINE THE COMPLETENESS AND RELIABILITY OF THE INFORMATION IN RESPECT TO THEIR PARTICULAR RESPONSIBILITY.



1 MAIN ELEVATION - TYP. BLOCK
SCALE: 1:100



2 SIDE ELEVATION - TYP. BLOCK
SCALE: 1:100

NO.	DATE	REVISION COMMENT

SRN ARCHITECTS INC. SHALL NOT BE RESPONSIBLE FOR:
1. ERRORS, OMISSIONS, INCOMPLETENESS DUE TO LOSS OF INFORMATION IN WHOLE OR PART WHEN INFORMATION IS TRANSFERRED;
2. TRANSMISSIONS OF ANY KIND OR DAMAGE TO RECEIVING ELECTRONIC SYSTEM WHEN INFORMATION IS TRANSFERRED.

SRN ARCHITECTS
8395 JANE STREET, SUITE 202
VAUGHAN, ONTARIO L4K 5Y2
PHONE: 905.417.5015 FAX: 905.417.5017

Stamp: **OSGOODE PROPERTIES**
April 13, 2026

CLIENT: **OSGOODE PROPERTIES**
1284 Wellington Street West, Ottawa, Ont.
K1Y 3A8
Tel: 613-729-0656

PROJECT: **OSGOODE STACKS**
2025 OTHELLO AVE.
OTTAWA, ONTARIO

DATE	SCALE
2025.05.25	1:300
DATE	SCALE
2025.05.25	1:300
DRAWN BY: BK	CHECKED BY: GR
PROJECT NUMBER: S24016	DRAWING NUMBER: A400