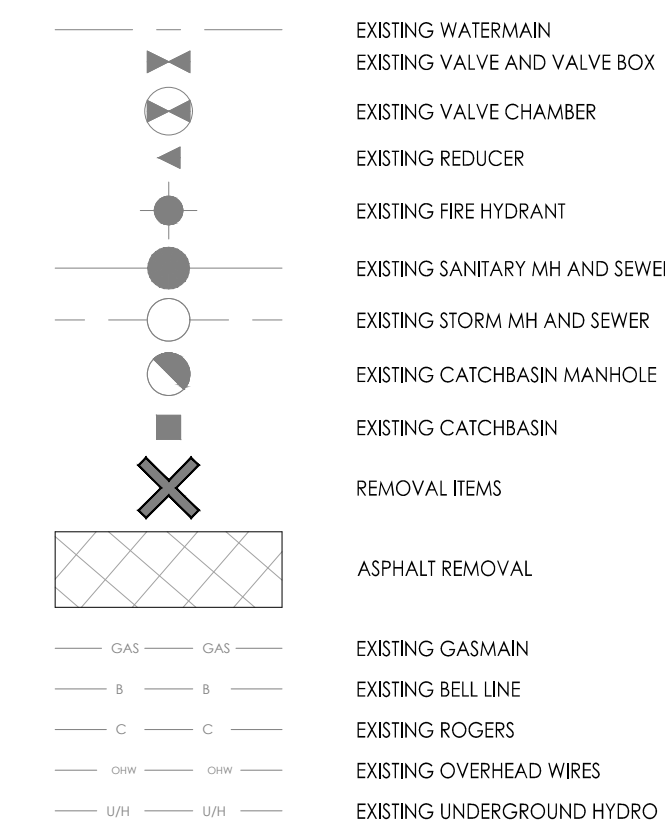


Copyright Reserved

The Contractor shall verify and be responsible for all dimensions. DO NOT scale the drawing - any errors or omissions shall be reported to Stantec without delay.
The Copyrights to all designs and drawings are the property of Stantec. Reproduction or use for any purpose other than that authorized by Stantec is forbidden.

Legend



Notes

- THE LOCATION OF UTILITIES IS APPROXIMATE ONLY AND THE EXACT LOCATION SHOULD BE DETERMINED BY CONSULTING THE MUNICIPAL AUTHORITIES AND UTILITY COMPANIES CONCERNED. THE CONTRACTOR SHALL PROVE THE LOCATION OF UTILITIES AND SHALL BE RESPONSIBLE FOR THEIR PROTECTION AND THE IMPLEMENTATION OF ANY NECESSARY PROCEDURES CALLED FOR IN THE APPROPRIATE STANDARD AND REGULATIONS.
- ASPHALT AREA FOR REMOVAL AND DISPOSAL = 1610m²
- CONCRETE AREA FOR REMOVAL AND DISPOSAL = 230m²
- INTERLOCK STONE AREA FOR REMOVAL AND DISPOSAL = 225m²
- CONTRACTOR TO LOCATE EXISTING WATER, STORM AND SANITARY SERVICES TO BE REMOVED. EXISTING WATER SERVICE TO BE BLANKED AT MAIN. EXISTING STORM AND SANITARY SERVICES TO BE ABANDONED AS PER CITY STANDARD S11.4.

Revision	By	Appd.	YY.MM.DD
3	REVISED PER MECHANICAL COORDINATION	MJS	PM 26.04.14
2	REVISED AS PER CITY COMMENTS	MJS	PM 25.04.22
1	REVISED AS PER CITY COMMENTS	MJS	PM 24.09.04
0	ISSUED FOR SPA	MJS	PM 23.06.01

File Name: 160401697 D8.dwg MJS DT MJS 23.05.01
Dwn. Chkd. Dgn. YY.MM.DD

Permit-Seal



Client/Project

BRIGIL HOMES

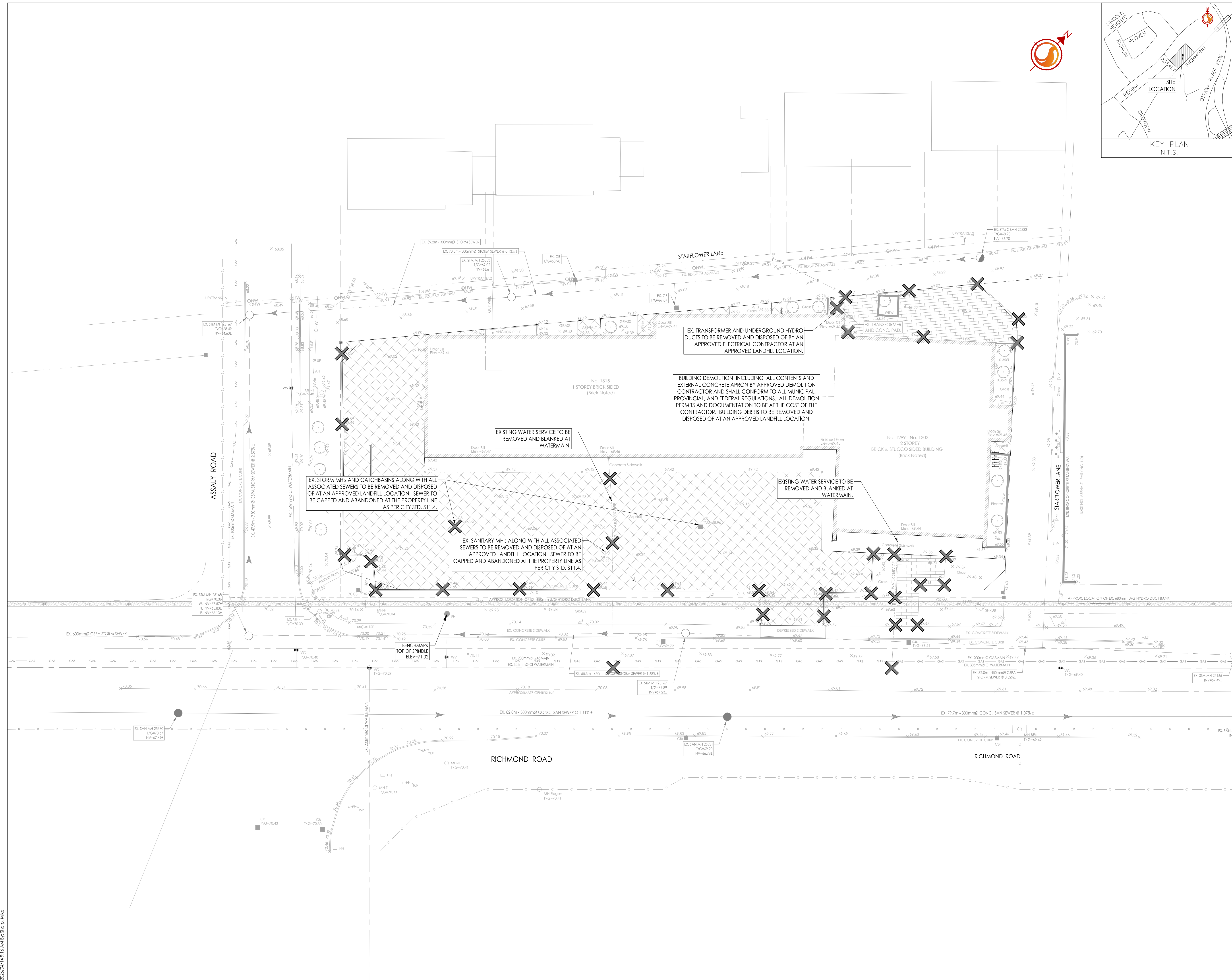
1299 RICHMOND ROAD
MIXED USE TOWER DEVELOPMENT
OTTAWA, ON, CANADA

Title

EXISTING CONDITIONS AND
REMOVALS PLAN

Project No.	Scale	Sheet	Revision
160401697	1:250	3	3

Drawing No. EXRM-1 2 of 7 3
Project No. 160401697 Scale 1:250 Sheet 3 of 7
Revision 3
PLANNING 19038



2025/04/14 10:41 AM 160401697 D8.dwg
 2025/04/14 10:41 AM 160401697 D8.dwg
 ORIGINAL SHEET - ARCH D