

### FLEXSTORM P/Ns 62MHDRFX & 62MHDRFXP

RD INLET TYPE: RAISED CAST IRON FRAME AND ROUND GRATE

Pure Frame with Fix Bag	Field Inlet Dimensions	Flexstorm Frame	Flexstorm Ratings (Flow at 60% max)	Pure Frame with Fix Bag				
ADD P/N	Flexstorm Item Code	A	B	BT	AT	Bypass (CFPS)	ADD P/N	Flexstorm Item Code
GENMGRY	FRD-205-250-FX	24	21.75	21.5	20.5	1.8	5.9	FRD-205-250-FXP
GENMGRY	FRD-205-275-FX	26	23.75	23.5	22.5	1.8	5.9	FRD-205-275-FXP
GENMGRY	FRD-205-300-FX	28	25.75	25.5	24.5	1.8	5.9	FRD-205-300-FXP
GENMGRY	FRD-205-325-FX	30	27.75	27.5	26.5	1.8	5.9	FRD-205-325-FXP
GENMGRY	FRD-205-350-FX	32	29.75	29.5	28.5	1.8	5.9	FRD-205-350-FXP
GENMGRY	FRD-205-375-FX	34	31.75	31.5	30.5	1.8	5.9	FRD-205-375-FXP
GENMGRY	FRD-205-400-FX	36	33.75	33.5	32.5	1.8	5.9	FRD-205-400-FXP
GENMGRY	FRD-205-425-FX	38	35.75	35.5	34.5	1.8	5.9	FRD-205-425-FXP
GENMGRY	FRD-205-450-FX	40	37.75	37.5	36.5	1.8	5.9	FRD-205-450-FXP
GENMGRY	FRD-205-475-FX	42	39.75	39.5	38.5	1.8	5.9	FRD-205-475-FXP
GENMGRY	FRD-205-500-FX	44	41.75	41.5	40.5	1.8	5.9	FRD-205-500-FXP
GENMGRY	FRD-205-525-FX	46	43.75	43.5	42.5	1.8	5.9	FRD-205-525-FXP
GENMGRY	FRD-205-550-FX	48	45.75	45.5	44.5	1.8	5.9	FRD-205-550-FXP
GENMGRY	FRD-205-575-FX	50	47.75	47.5	46.5	1.8	5.9	FRD-205-575-FXP
GENMGRY	FRD-205-600-FX	52	49.75	49.5	48.5	1.8	5.9	FRD-205-600-FXP
GENMGRY	FRD-205-625-FX	54	51.75	51.5	50.5	1.8	5.9	FRD-205-625-FXP
GENMGRY	FRD-205-650-FX	56	53.75	53.5	52.5	1.8	5.9	FRD-205-650-FXP
GENMGRY	FRD-205-675-FX	58	55.75	55.5	54.5	1.8	5.9	FRD-205-675-FXP
GENMGRY	FRD-205-700-FX	60	57.75	57.5	56.5	1.8	5.9	FRD-205-700-FXP
GENMGRY	FRD-205-725-FX	62	59.75	59.5	58.5	1.8	5.9	FRD-205-725-FXP
GENMGRY	FRD-205-750-FX	64	61.75	61.5	60.5	1.8	5.9	FRD-205-750-FXP
GENMGRY	FRD-205-775-FX	66	63.75	63.5	62.5	1.8	5.9	FRD-205-775-FXP
GENMGRY	FRD-205-800-FX	68	65.75	65.5	64.5	1.8	5.9	FRD-205-800-FXP
GENMGRY	FRD-205-825-FX	70	67.75	67.5	66.5	1.8	5.9	FRD-205-825-FXP
GENMGRY	FRD-205-850-FX	72	69.75	69.5	68.5	1.8	5.9	FRD-205-850-FXP
GENMGRY	FRD-205-875-FX	74	71.75	71.5	70.5	1.8	5.9	FRD-205-875-FXP
GENMGRY	FRD-205-900-FX	76	73.75	73.5	72.5	1.8	5.9	FRD-205-900-FXP
GENMGRY	FRD-205-925-FX	78	75.75	75.5	74.5	1.8	5.9	FRD-205-925-FXP
GENMGRY	FRD-205-950-FX	80	77.75	77.5	76.5	1.8	5.9	FRD-205-950-FXP
GENMGRY	FRD-205-975-FX	82	79.75	79.5	78.5	1.8	5.9	FRD-205-975-FXP
GENMGRY	FRD-205-1000-FX	84	81.75	81.5	80.5	1.8	5.9	FRD-205-1000-FXP

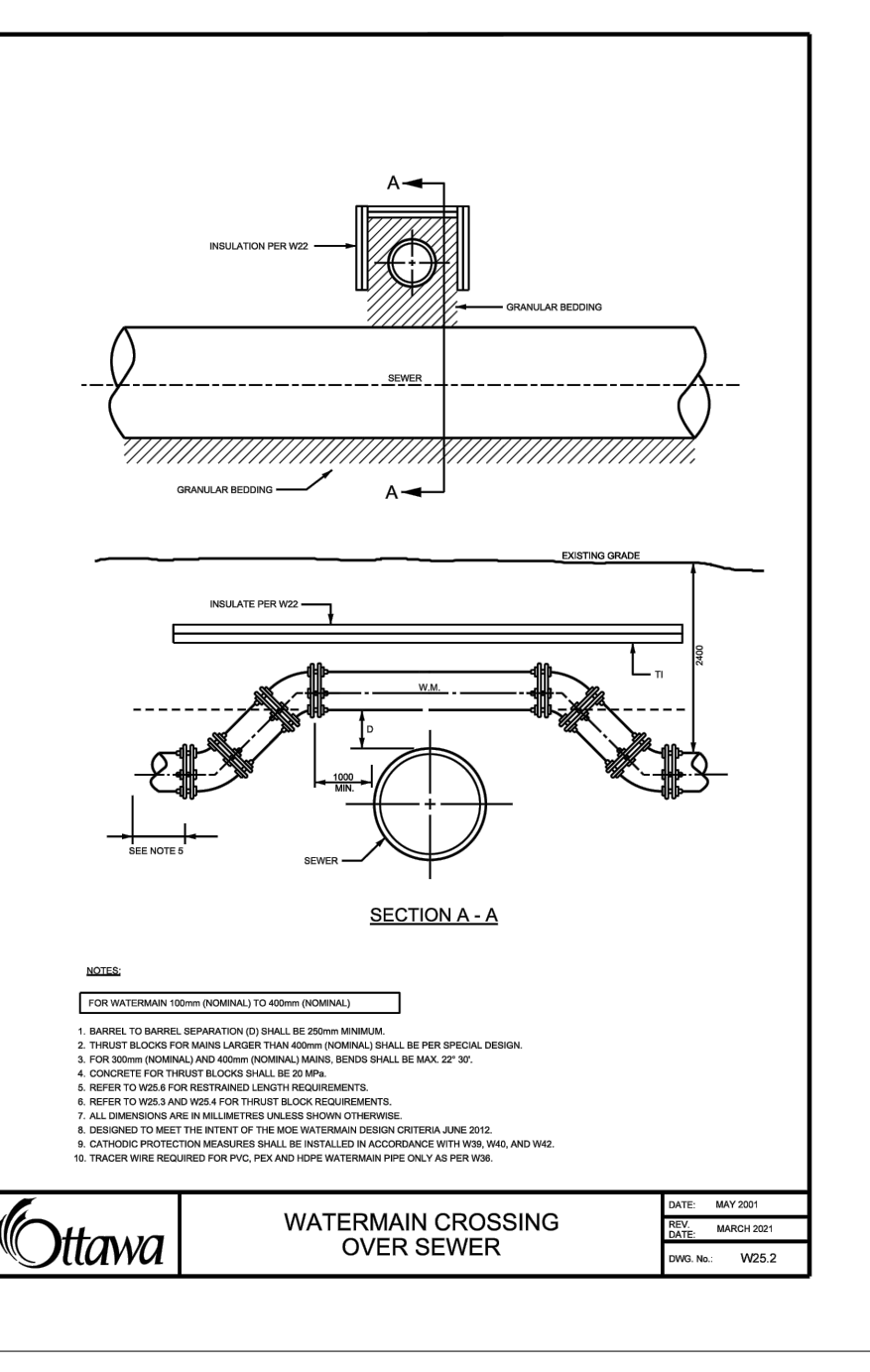
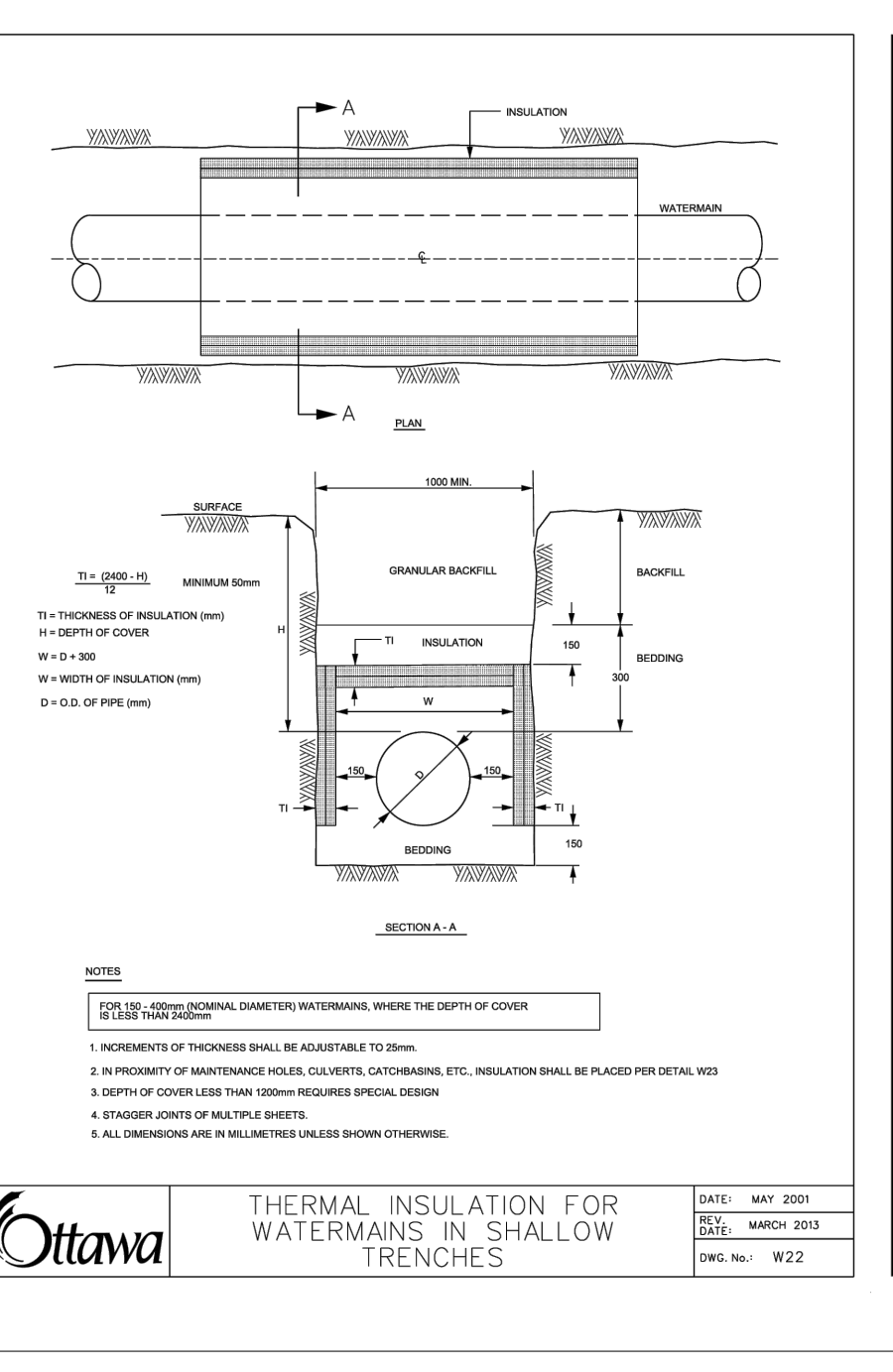
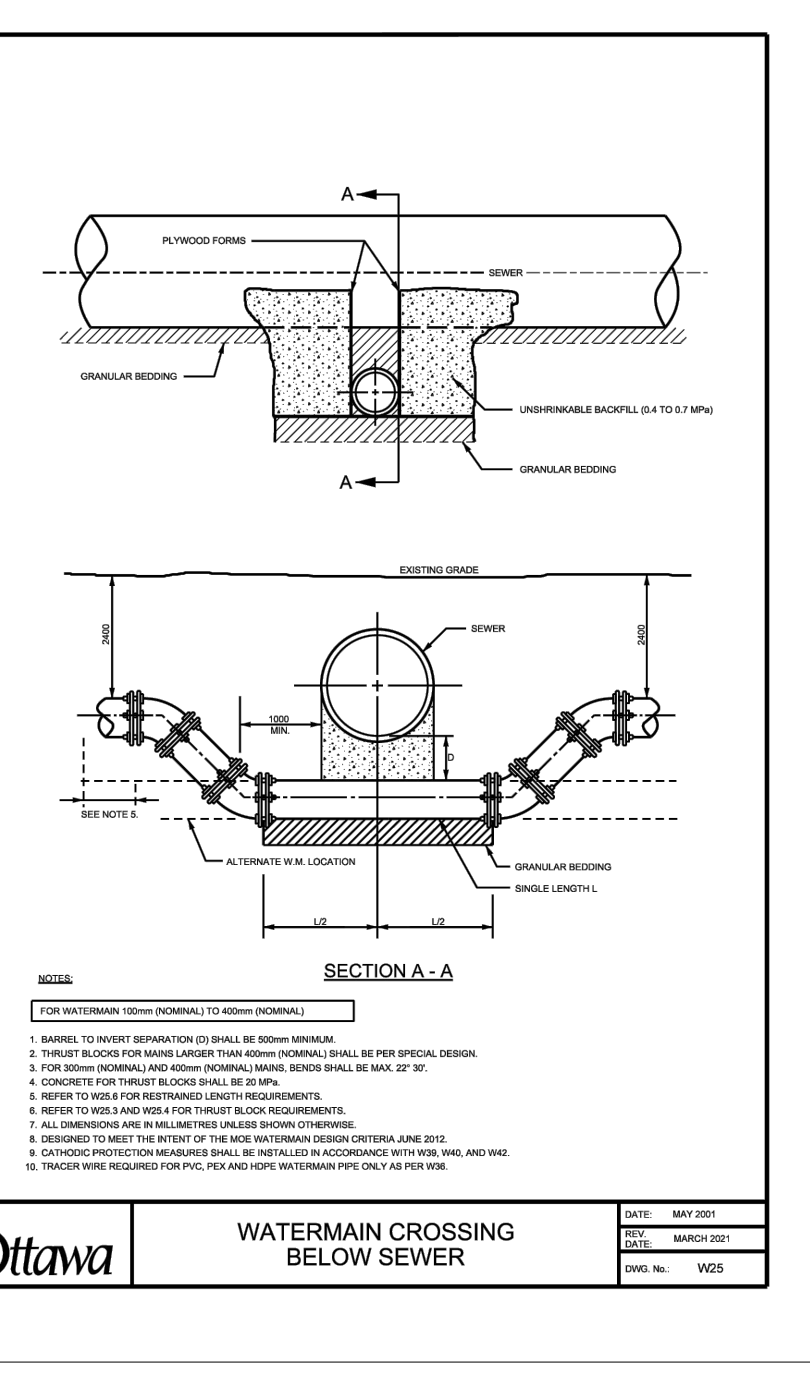
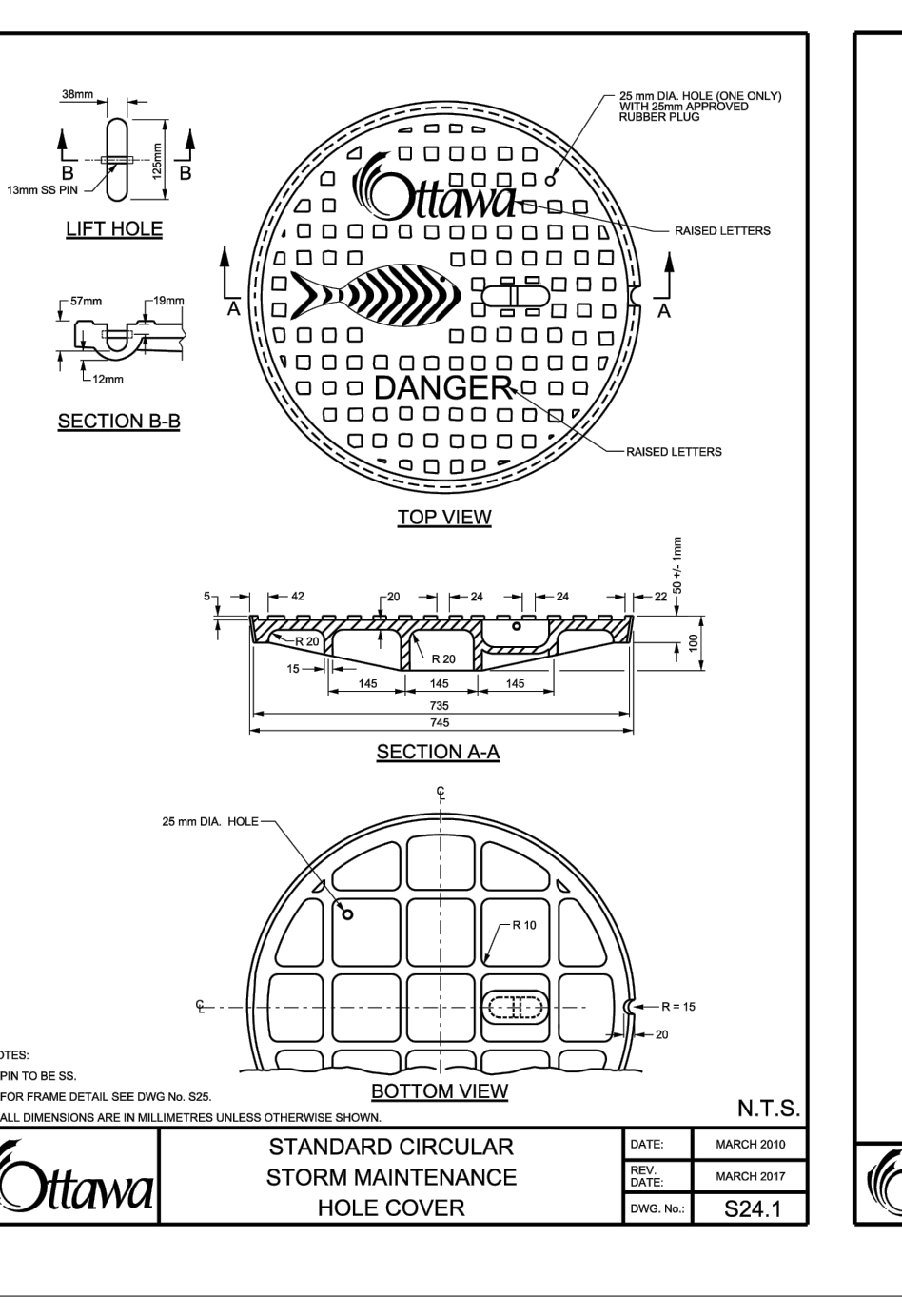
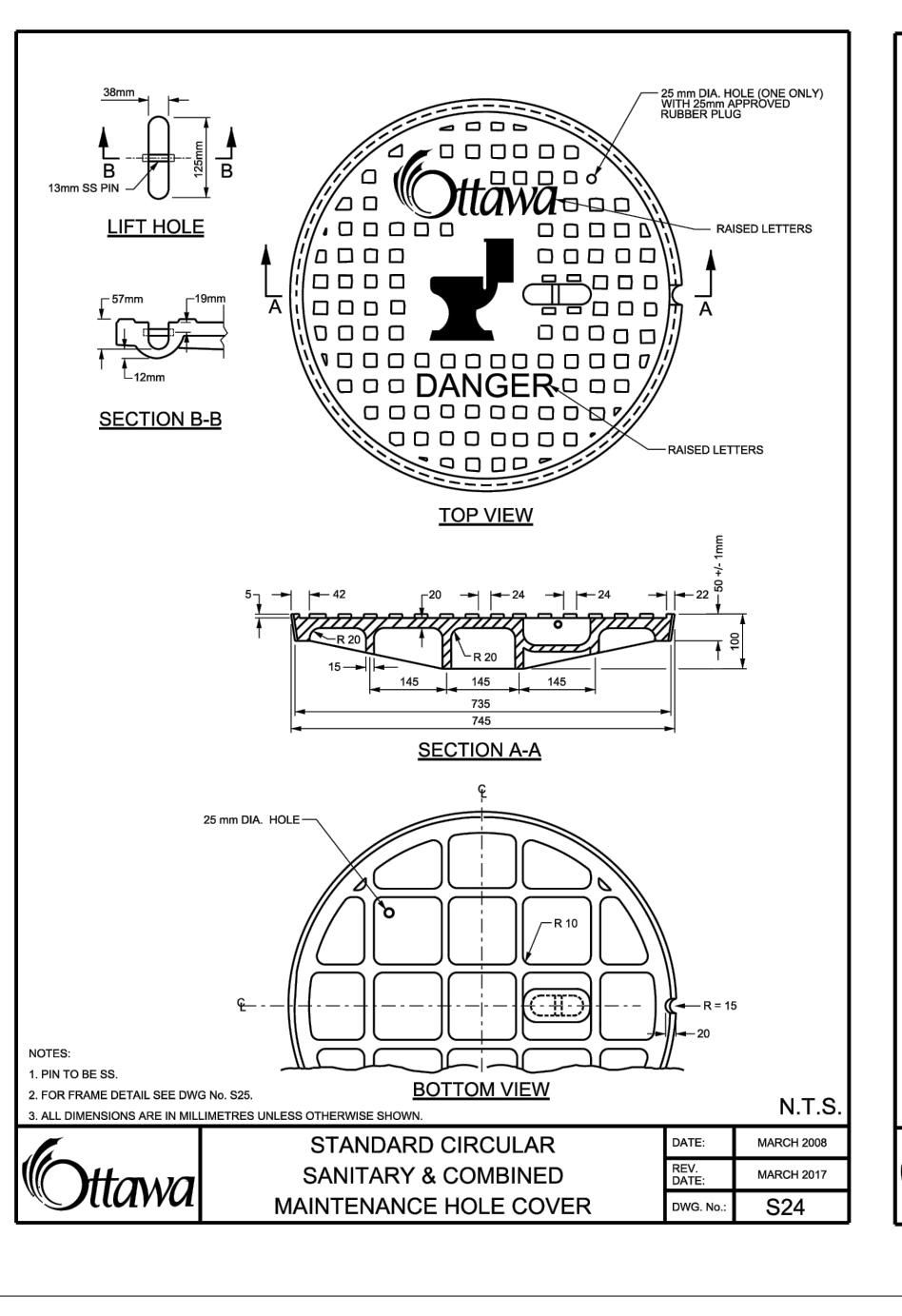
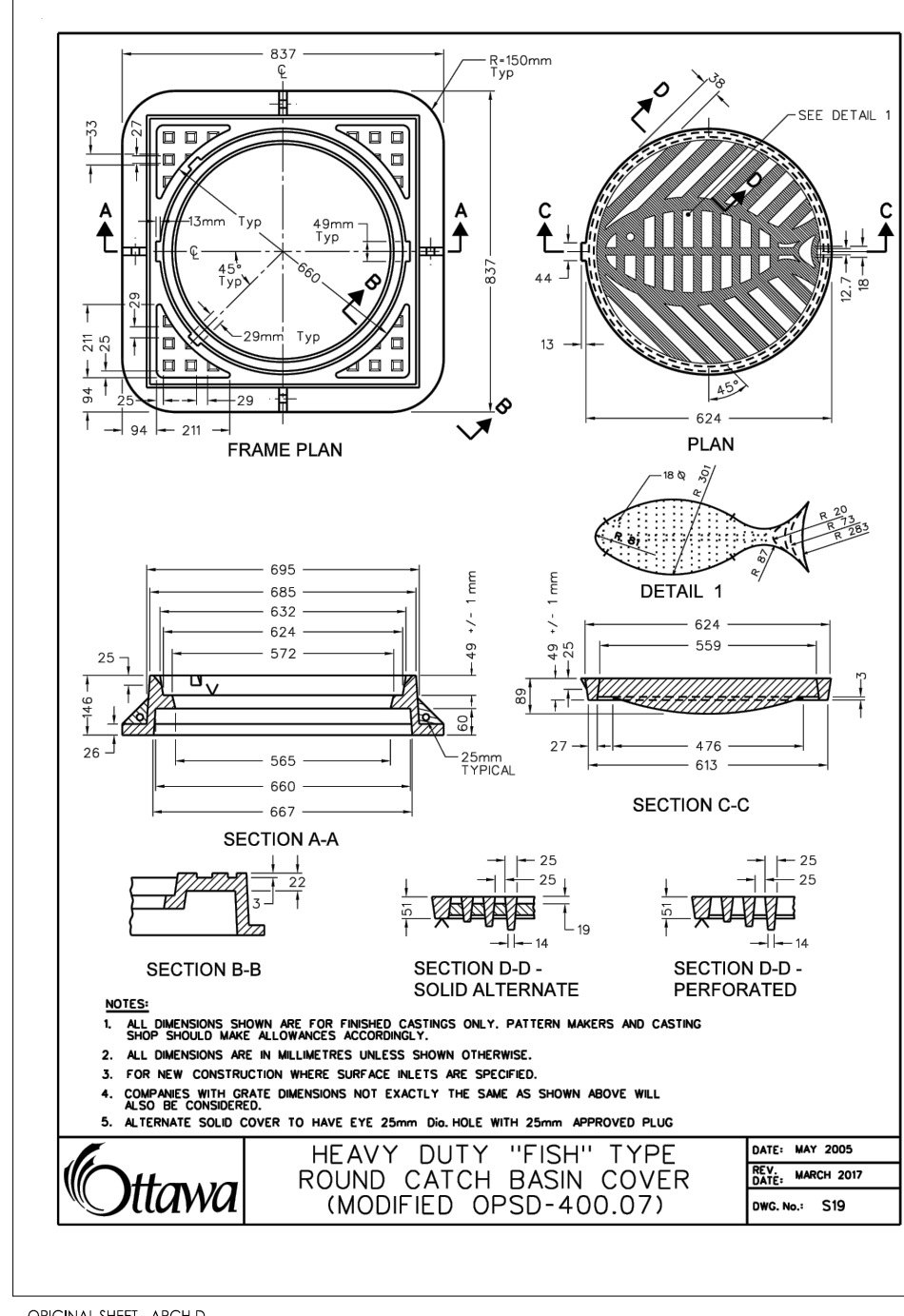
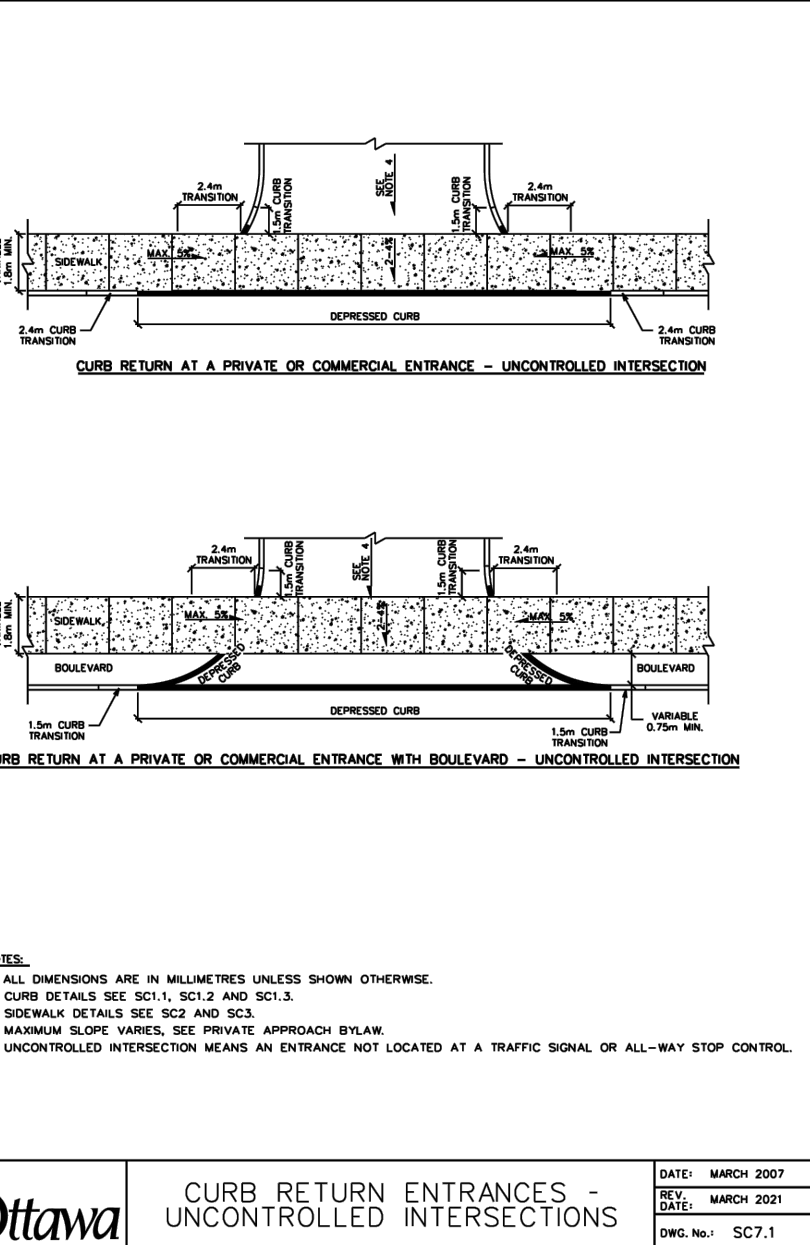
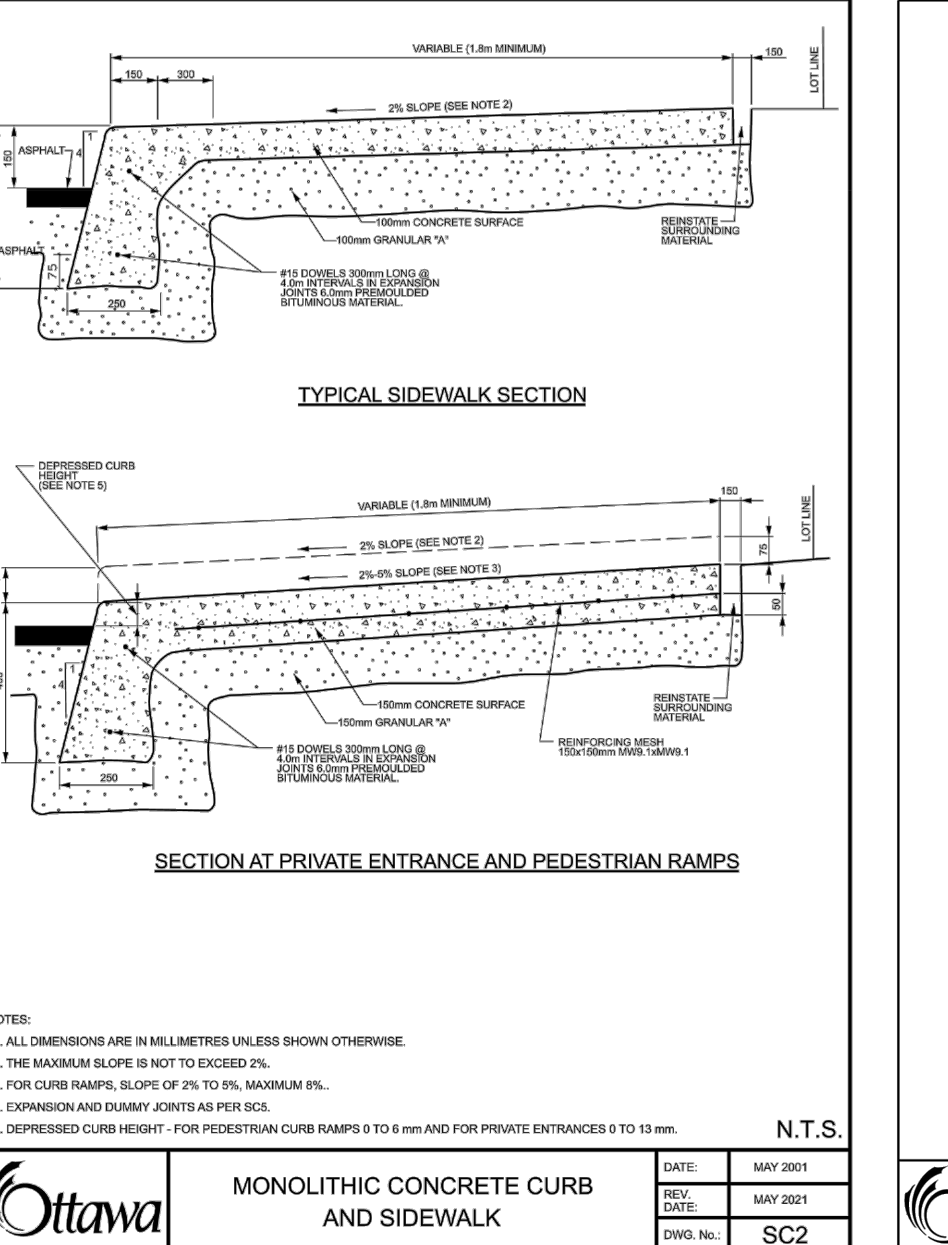
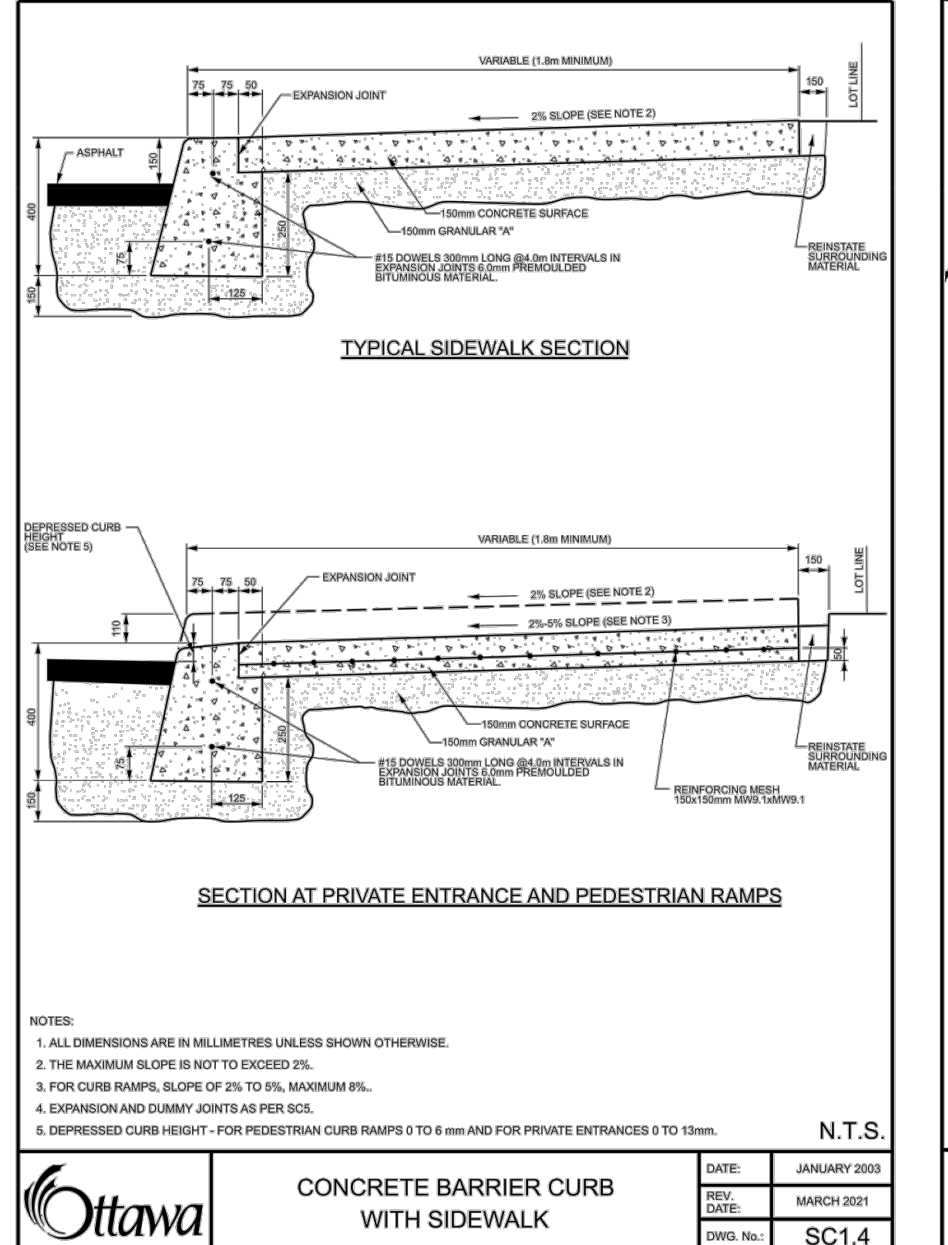
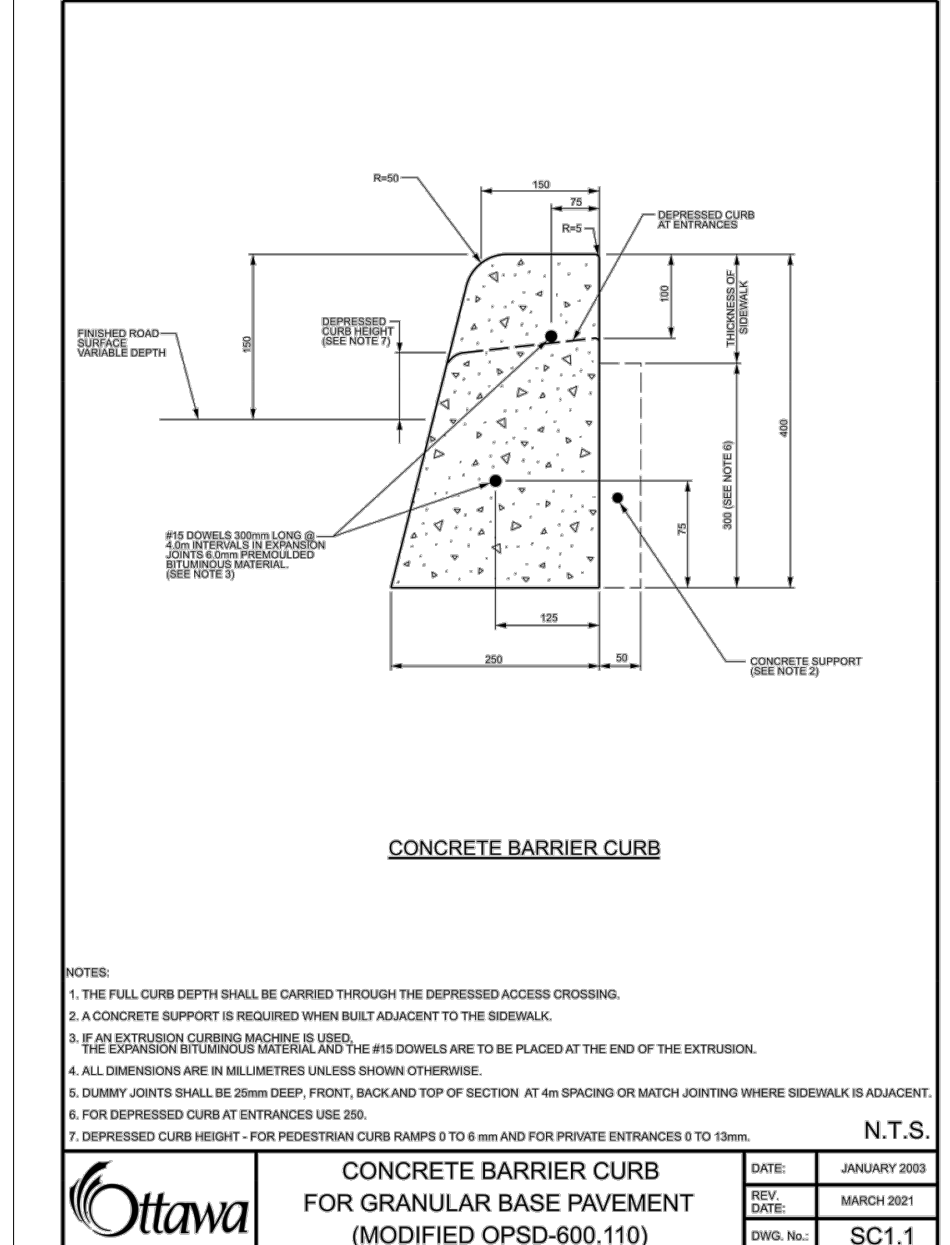
NOTES:  
1. RATINGS SHOWN ARE FOR STANDARD 20" BAG DEPTH; "SHORT" 12" DEPTH BAGS ARE AVAILABLE WITH -S SUFFIX; RATINGS REDUCED BY -50%.  
2. THE FOLLOWING REQUIRES ADDITIONAL REVIEW  
-GRATES WITH EXTENDED BOTTOMS  
-ANY OBSTRUCTED INLET OPENINGS

### FLEXSTORM P/Ns 62LHDRFX & 62LHDRFXP

RD INLET TYPE: RAISED CAST IRON FRAME AND ROUND GRATE

Pure Frame with Fix Bag	Field Inlet Dimensions	Flexstorm Frame	Flexstorm Ratings (Flow at 60% max)	Pure Frame with Fix Bag					
ADD P/N	Flexstorm Item Code	A	B	BT	AT	Bypass (CFPS)	ADD P/N	Flexstorm Item Code	
GENMGRY	FRD-275-250-FX	27.5	25.16	25.0	27.0	2.1	1.6	5.9	FRD-275-250-FXP
GENMGRY	FRD-275-275-FX	29.5	27.16	27.0	29.0	2.2	1.6	5.9	FRD-275-275-FXP
GENMGRY	FRD-275-300-FX	31.5	29.16	29.0	31.0	2.2	1.6	5.9	FRD-275-300-FXP
GENMGRY	FRD-275-325-FX	33.5	31.16	31.0	33.0	2.2	1.6	5.9	FRD-275-325-FXP
GENMGRY	FRD-275-350-FX	35.5	33.16	33.0	35.0	2.2	1.6	5.9	FRD-275-350-FXP
GENMGRY	FRD-275-375-FX	37.5	35.16	35.0	37.0	2.2	1.6	5.9	FRD-275-375-FXP
GENMGRY	FRD-275-400-FX	39.5	37.16	37.0	39.0	2.2	1.6	5.9	FRD-275-400-FXP
GENMGRY	FRD-275-425-FX	41.5	39.16	39.0	41.0	2.2	1.6	5.9	FRD-275-425-FXP
GENMGRY	FRD-275-450-FX	43.5	41.16	41.0	43.0	2.2	1.6	5.9	FRD-275-450-FXP
GENMGRY	FRD-275-475-FX	45.5	43.16	43.0	45.0	2.2	1.6	5.9	FRD-275-475-FXP
GENMGRY	FRD-275-500-FX	47.5	45.16	45.0	47.0	2.2	1.6	5.9	FRD-275-500-FXP
GENMGRY	FRD-275-525-FX	49.5	47.16	47.0	49.0	2.2	1.6	5.9	FRD-275-525-FXP
GENMGRY	FRD-275-550-FX	51.5	49.16	49.0	51.0	2.2	1.6	5.9	FRD-275-550-FXP
GENMGRY	FRD-275-575-FX	53.5	51.16	51.0	53.0	2.2	1.6	5.9	FRD-275-575-FXP
GENMGRY	FRD-275-600-FX	55.5	53.16	53.0	55.0	2.2	1.6	5.9	FRD-275-600-FXP
GENMGRY	FRD-275-625-FX	57.5	55.16	55.0	57.0	2.2	1.6	5.9	FRD-275-625-FXP
GENMGRY	FRD-275-650-FX	59.5	57.16	57.0	59.0	2.2	1.6	5.9	FRD-275-650-FXP
GENMGRY	FRD-275-675-FX	61.5	59.16	59.0	61.0	2.2	1.6	5.9	FRD-275-675-FXP
GENMGRY	FRD-275-700-FX	63.5	61.16	61.0	63.0	2.2	1.6	5.9	FRD-275-700-FXP
GENMGRY	FRD-275-725-FX	65.5	63.16	63.0	65.0	2.2	1.6	5.9	FRD-275-725-FXP
GENMGRY	FRD-275-750-FX	67.5	65.16	65.0	67.0	2.2	1.6	5.9	FRD-275-750-FXP
GENMGRY	FRD-275-775-FX	69.5	67.16	67.0	69.0	2.2	1.6	5.9	FRD-275-775-FXP
GENMGRY	FRD-275-800-FX	71.5	69.16	69.0	71.0	2.2	1.6	5.9	FRD-275-800-FXP
GENMGRY	FRD-275-825-FX	73.5	71.16	71.0	73.0	2.2	1.6	5.9	FRD-275-825-FXP
GENMGRY	FRD-275-850-FX	75.5	73.16	73.0	75.0	2.2	1.6	5.9	FRD-275-850-FXP
GENMGRY	FRD-275-875-FX	77.5	75.16	75.0	77.0	2.2	1.6	5.9	FRD-275-875-FXP
GENMGRY	FRD-275-900-FX	79.5	77.16	77.0	79.0	2.2	1.6	5.9	FRD-275-900-FXP
GENMGRY	FRD-275-925-FX	81.5	79.16	79.0	81.0	2.2	1.6	5.9	FRD-275-925-FXP
GENMGRY	FRD-275-950-FX	83.5	81.16	81.0	83.0	2.2	1.6	5.9	FRD-275-950-FXP
GENMGRY	FRD-275-975-FX	85.5	83.16	83.0	85.0	2.2	1.6	5.9	FRD-275-975-FXP
GENMGRY	FRD-275-1000-FX	87.5	85.16	85.0	87.0	2.2	1.6	5.9	FRD-275-1000-FXP

NOTES:  
1. RATINGS SHOWN ARE FOR STANDARD 20" BAG DEPTH; "SHORT" 12" DEPTH BAGS ARE AVAILABLE WITH -S SUFFIX; RATINGS REDUCED BY -50%.  
2. THE FOLLOWING REQUIRES ADDITIONAL REVIEW  
-GRATES WITH EXTENDED BOTTOMS  
-ANY OBSTRUCTED INLET OPENINGS



Copyright Reserved  
The Contractor shall verify and be responsible for all dimensions. DO NOT scale the drawings - any errors or omissions shall be reported to Stantec without delay.  
The Copyrights to all designs and drawings are the property of Stantec. Reproduction or use for any purpose other than that authorized by Stantec is forbidden.

Legend

- PROPOSED SILT FENCE BOUNDARY AS PER OPSD 219.110
- PROPOSED CONSTRUCTION FENCING
- PROPOSED CATCH BASIN PROTECTION AS PER FLEX STORM INLET FILTERS DETAIL, ITEM CODE P-RD-240-222-FX
- PROPOSED CATCH BASIN NH PROTECTION AS PER FLEX STORM INLET FILTERS DETAIL, ITEM CODE P-RD-290-270-FX
- PROPOSED CATCH BASIN PROTECTION AS PER TERRAFIX SILTSACK DETAIL
- PROPOSED MUD MAT LOCATION
- PROPOSED VALVE BOX
- PROPOSED VALVE CHAMBER
- PROPOSED FIRE HYDRANT
- PROPOSED SANITARY SEWER MANHOLE
- PROPOSED STORM SEWER MANHOLE
- PROPOSED CATCH BASIN

**Best Management Practices**  
CONTRACTOR TO PROVIDE EROSION AND SEDIMENT CONTROLS (BEST MANAGEMENT PRACTICES) DURING CONSTRUCTION OF THIS PROJECT.

EROSION MUST BE MINIMIZED AND SEDIMENTS MUST BE REMOVED FROM CONSTRUCTION SITE RUN-OFF IN ORDER TO PROTECT DOWNSTREAM AREAS. DURING ALL CONSTRUCTION, EROSION AND SEDIMENTATION SHOULD BE CONTROLLED BY THE FOLLOWING TECHNIQUES:

- LIMIT THE EXTENT OF EXPOSED SOILS AT ANY GIVEN TIME.
- REVEGETATE EXPOSED AREAS AND SLOPES AS SOON AS POSSIBLE.
- MINIMIZE AREA TO BE CLEARED AND GRUBBED.
- PROTECT EXPOSED SLOPES WITH PLASTIC OR SYNTHETIC MULCHES.
- INSTALL CATCH BASIN BARRIERS OR EQUIVALENT IN ALL PROPOSED CATCH BASINS AND CATCH BASIN MANHOLES AND IN ALL EXISTING CATCH BASINS THAT WILL RECEIVE RUN-OFF FROM THE SITE.
- A SILT FENCE SHALL BE INSTALLED AROUND THE PERIMETER OF ALL AND ANY STOCKPILES OF MATERIAL TO BE USED OR REMOVED FROM SITE. (LOCATION TO BE DETERMINED)
- A VISUAL INSPECTION SHALL BE DONE DAILY ON SEDIMENT CONTROL MEASURES AND CLEANED OF ANY ACCUMULATED SILT AS REQUIRED. THE DEPOSITS WILL BE DISPOSED OFF SITE AS PER THE REQUIREMENTS OF THE CONTRACT.
- SEDIMENT CONTROL BARRIERS MAY ONLY BE REMOVED TEMPORARILY WITH APPROVAL OF CONTRACT ADMINISTRATOR TO ACCOMMODATE CONSTRUCTION OPERATIONS. ALL AFFECTED BARRIERS MUST BE REINSTATED AT NIGHT WHEN CONSTRUCTION IS COMPLETED. NO REMOVAL WILL OCCUR IF THERE IS A SIGNIFICANT RAINFALL EVENT ANTICIPATED 10+ HOURS UNLESS A NEW DEVICE HAS BEEN INSTALLED TO PROTECT EXISTING STORM AND SANITARY SEWER SYSTEMS, OR DOWNSTREAM WATERCOURSES.
- NO REFUELING OR CLEANING OF EQUIPMENT IS PERMITTED NEAR ANY EXISTING WATERWAY.
- CONTRACTOR SHALL REMOVE SEDIMENT CONTROL MEASURES WHEN, IN THE OPINION OF THE CONTRACT ADMINISTRATOR, THE MEASURES IS NO LONGER REQUIRED. NO CONTROL MEASURES SHALL BE PERMANENTLY REMOVED WITHOUT PRIOR WRITTEN AUTHORIZATION FROM THE CONTRACT ADMINISTRATOR.
- THE CONTRACTOR SHALL PERIODICALLY, OR WHEN REQUESTED BY THE CONTRACT ADMINISTRATOR, CLEAN OUT ACCUMULATED SEDIMENTS AS REQUIRED.
- THE CONTRACTOR SHALL IMMEDIATELY REPORT TO THE ENGINEER ANY ACCIDENTAL DISCHARGES OF SEDIMENT MATERIAL INTO THE WATERCOURSE. APPROPRIATE RESPONSE MEASURES, INCLUDING ANY REPAIRS TO EXISTING CONTROL MEASURES OR THE IMPLEMENTATION OF ADDITIONAL CONTROL MEASURES, SHALL BE CARRIED OUT BY THE CONTRACTOR WITHOUT DELAY.
- CONTRACTOR SHALL INSTALL MUD MATS AT BOTH ENTRIES TO THE SITE.
- STORMWATER SHALL BE COVERED WITH HYDRO-SEED AND MULCH.

Revision

3	REVISED PER MECHANICAL COORDINATION	MJS	PM	26.04.14
2	REVISED AS PER CITY COMMENTS	MJS	PM	25.04.22
1	REVISED AS PER CITY COMMENTS	MJS	PM	24.09.04
0	ISSUED FOR SPA	MJS	PM	23.06.01

Revision By: Appd. YF.MM.DD

File Name: I6401697.D8.dwg  
MJS DT MJS 23.05.01  
Dwn. Chkd. Dgn. YF.MM.DD

Permit Seal  
LICENSED PROFESSIONAL ENGINEER  
P. MOROZ  
90493552  
2026-04-14  
PROVINCE OF ONTARIO

Client/Project  
**BRIGL HOMES CLIENT2**  
1299 RICHMOND ROAD  
MIXED USE TOWER DEVELOPMENT  
OTTAWA, ON, CANADA

Title  
**EROSION CONTROL PLAN AND DETAIL SHEET**

Project No. 160401697  
Scale  
Drawing No. Sheet  
Revision

EC/DS-1 5 of 7 3  
PLAN # 19038