

LEGEND

FFL	FINISHED FLOOR ELEVATION
TOF	TOP OF FOUNDATION
BFL	BASEMENT FLOOR ELEVATION
USF	UNDERSIDE OF FOOTING
---	PROPERTY LINE
CB	CATCH-BASIN
MH	STORM MANHOLE
MH	SANITARY MANHOLE
FH	FIRE HYDRANT
FDC Y	FIRE DEPARTMENT CONNECTION
-0.99.99	EXISTING ELEVATION
+99.99	PROPOSED ELEVATION
2%	EXISTING SLOPE
2%	PROPOSED SLOPE
---	CENTERLINE OF SWALE
---	SILT FENCE BARRIER
---	HEATED ASPHALT PAVEMENT
---	CONCRETE
---	HEATED CONCRETE
---	INTERLOCK



No.	DATE	REVISION
5	JAN 21-26	RE-ISSUED FOR APPROVAL
4	JUL 31-25	RE-ISSUED FOR APPROVAL
3	APR 1-25	RE-ISSUED FOR APPROVAL
2	FEB 19-25	ISSUED FOR APPROVAL
1	JAN 15-25	ISSUED FOR COORDINATION

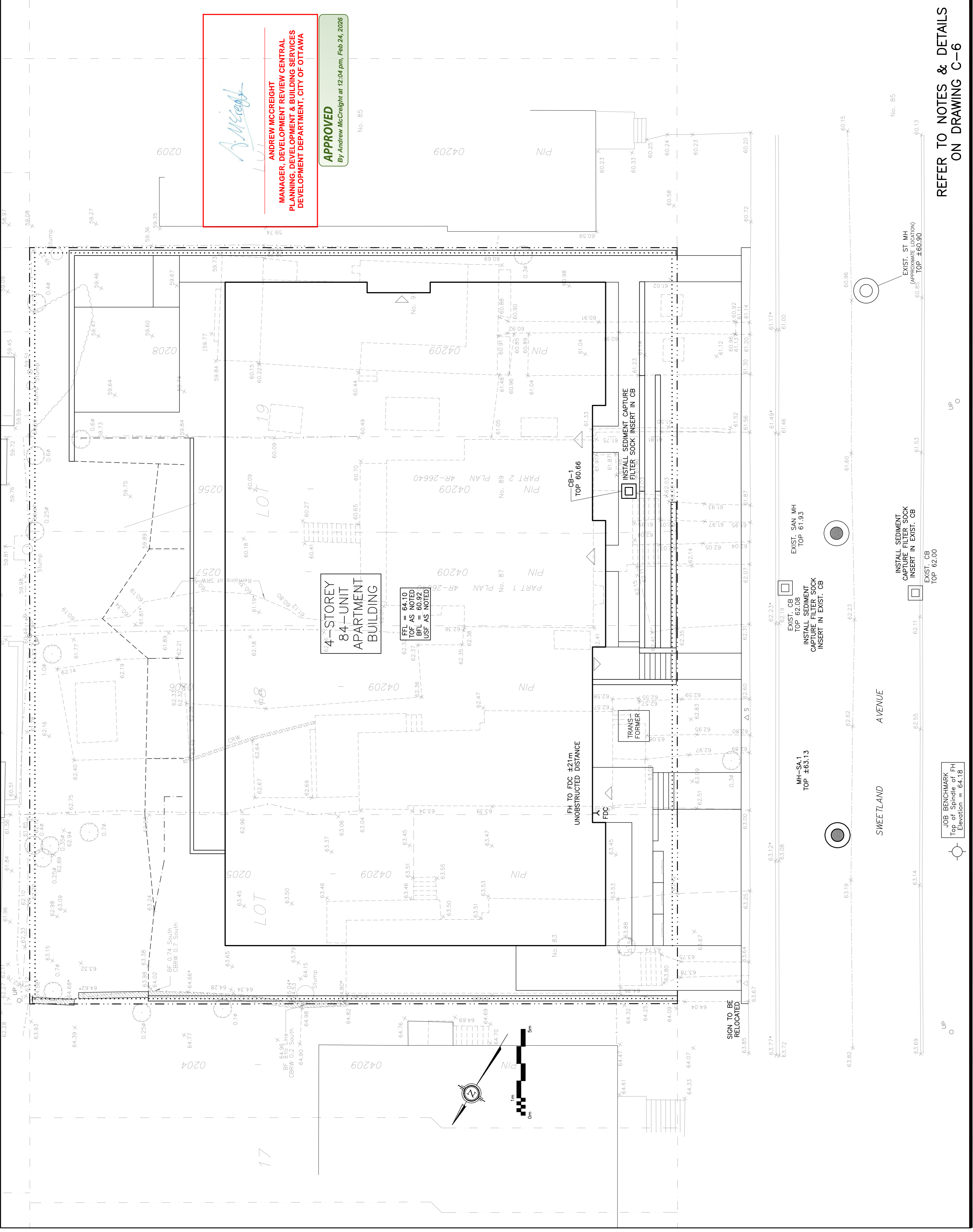
D. B. GRAY ENGINEERING INC.
 Structural Management - Consulting & Engineering - Storm & Sanitary Services - Fire Services
 700 Long Point Circle
 Ottawa, Ontario d.gray@dbgrayengineering.com
 613-425-8044

Project
PROPOSED 4-STORY APARTMENT BUILDING
83-91 SWEETLAND AVENUE
 OTTAWA, ONTARIO

Drawing Title
EROSION & SEDIMENT CONTROL PLAN

Engineer's Seal

 Drawn: D.B.G.
 H. Scale: 1:100
 V. Scale: 1:100
 Date: DEC 12-24
 Job No.: 24123
 Drawing No.: **C-4**
 of **8**
 NOT VALID UNLESS SIGNED & DATED



A. McCreight
ANDREW MCCREIGHT
 MANAGER, DEVELOPMENT REVIEW CENTRAL
 PLANNING, DEVELOPMENT & BUILDING SERVICES
 DEVELOPMENT DEPARTMENT, CITY OF OTTAWA

APPROVED
 By Andrew McCreight at 12:04 pm, Feb 24, 2026

FFL = 64.10
 TOF AS NOTED
 BFL = 60.92
 USF AS NOTED

REFER TO NOTES & DETAILS
 ON DRAWING C-6

JOB BENCHMARK
 Top of Spindle of FH
 Elevation = 64.16

UP

UP