



ARCHITECTURE + PLANNING

414 Churchill Avenue North  
Ottawa, Ontario, K1Z 5C6  
613-262-5480 info@rjh.ca rjh.ca

4.	2025-07-31	REVISED PER CITY SPC COMMENTS
3.	2025-04-08	REVISED SPC APPLICATION
2.	2025-02-04	ISSUED FOR SPC + RE-ZONING
1.	2024-11-25	SITE PLAN COORDINATION
No.	Y / M / D	REVISION



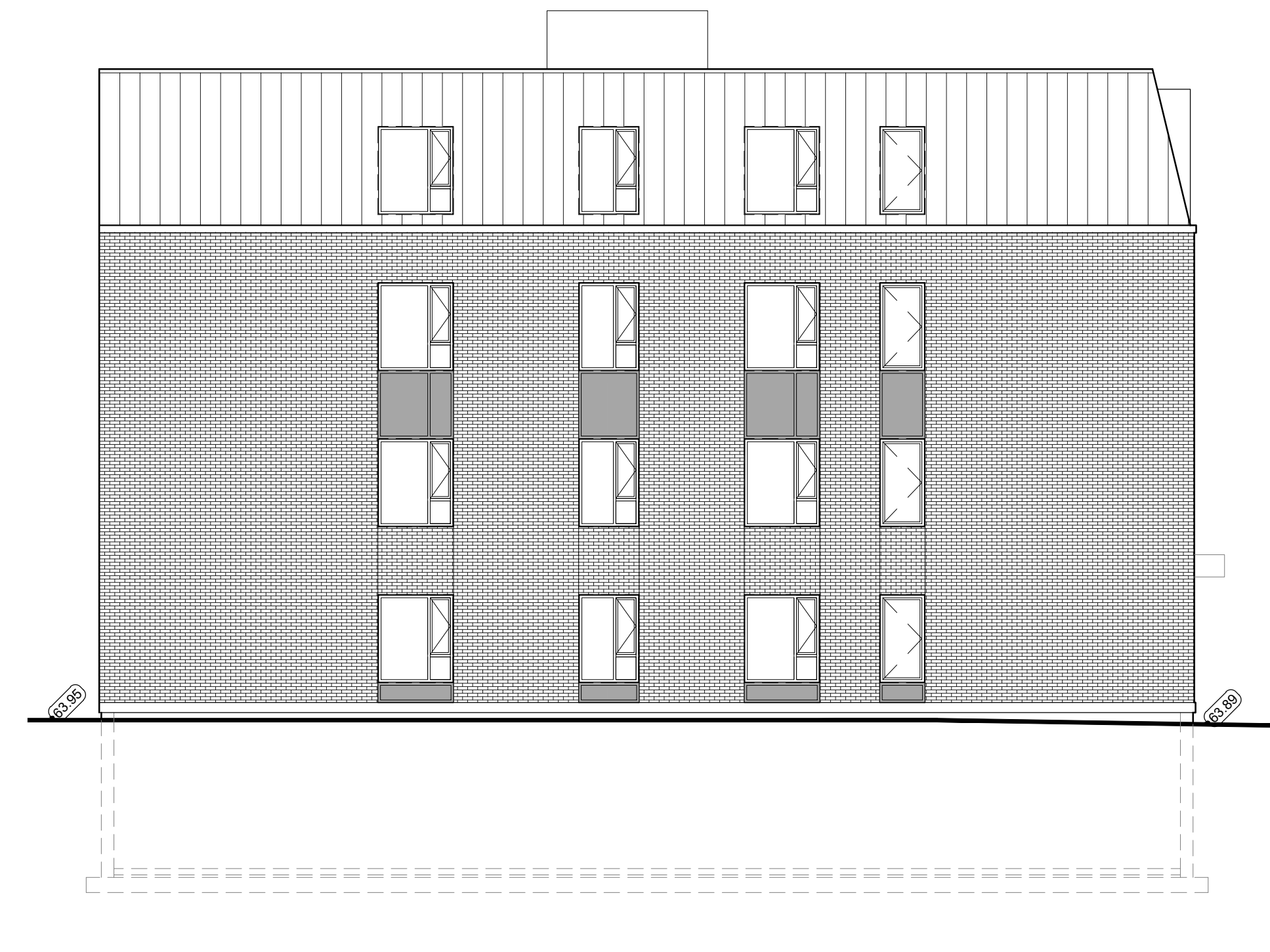
1 FRONT (WEST) ELEVATION  
SCALE: 1:100



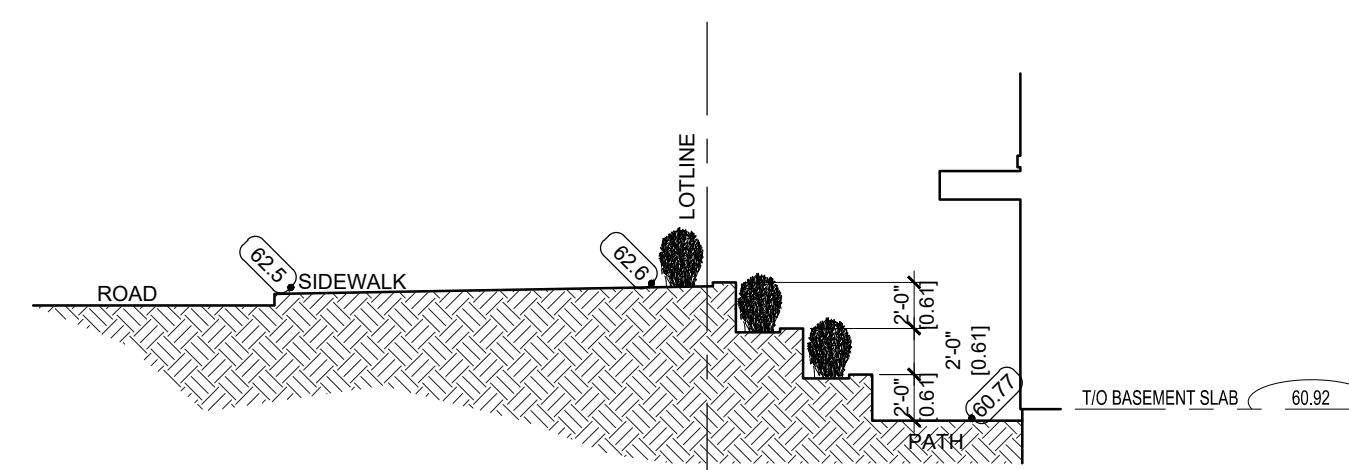
2 RIGHT (SOUTH) SIDE ELEVATION  
SCALE: 1:100



3 REAR (EAST) ELEVATION  
SCALE: 1:100



4 LEFT (NORTH) SIDE ELEVATION  
SCALE: 1:100



5 PLANTER SECTION  
SCALE: 1:100

*Andrew McCreight*

**ANDREW MCCREIGHT**  
MANAGER, DEVELOPMENT REVIEW CENTRAL  
PLANNING, DEVELOPMENT & BUILDING SERVICES  
DEVELOPMENT DEPARTMENT, CITY OF OTTAWA

**APPROVED**  
By Andrew McCreight at 12:02 pm, Feb 24, 2026

MATERIAL LEGEND:

	BRICK VENEER
	METAL PANEL
	STANDING SEAM METAL SIDING
	FIBER CEMENT SIDING

UPSCALE HOMES  
212 DONALD ST.  
OTTAWA ON, K1K 1M8

It is the responsibility of the appropriate contractor to check & verify all dimensions on site and report all errors &/or omissions to the architect. All contractors must comply with all pertinent codes & by-laws, & use proprietary products as directed by the manufacturer. Do not scale drawings. Copyright reserved.



**SWEETLAND APARTMENTS**  
83-91 SWEETLAND OTTAWA, ONTARIO, K1N 7T9

ELEVATIONS

Drawn By:	AW	Date:	NOV 2024	<b>A2.1</b>
Project No:	2407	Scale:	1:100	
PRINTED: 31 Jul 2025				