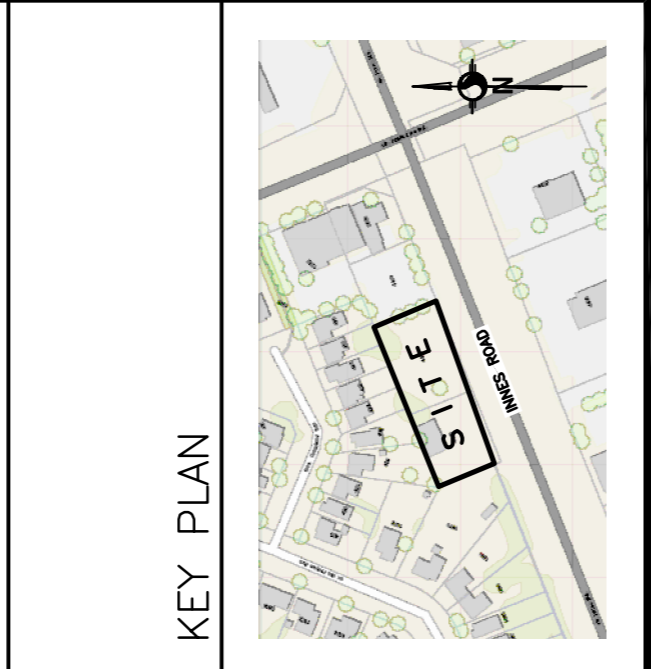


LEGEND

FFL	FINISHED FLOOR ELEVATION
TOF	TOP OF FOUNDATION
USF	UNDERSIDE OF FOOTING
---	PROPERTY LINE
CB	CATCH BASIN
CI	CURB INLET
MH	STORM MANHOLE
MH	SANITARY MANHOLE
FH	FIRE HYDRANT
CS	CURB STOP & SERVICE POST
VB	VALVE & VALVE BOX
SAN	SANITARY SEWER
ST	STORM SEWER
WS/WM	WATER SERVICE/WATERMAIN
OBV	OBVERT
SPL	SPRINGLINE
INV	INVERT
US	UNDERSIDE



No.	DATE	REVISION
4	MAR 31-26	RE-ISSUED FOR APPROVAL
3	JAN 14-26	ISSUED FOR CONSTRUCTION
2	DEC 16-25	RE-ISSUED FOR APPROVAL
1	JUL 15-25	ISSUED FOR APPROVAL

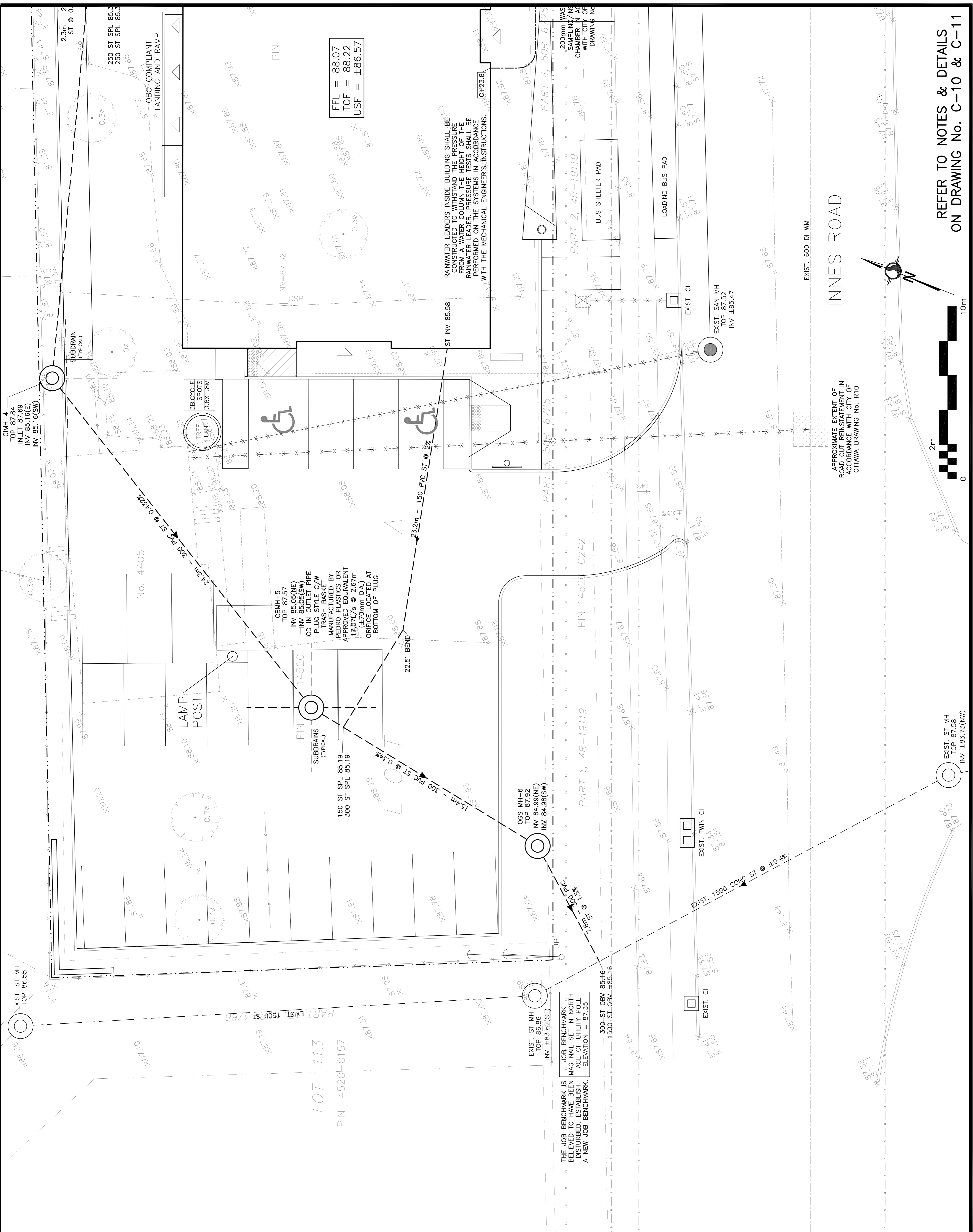
D. B. GRAY ENGINEERING INC.
 Professional Engineers - Consulting & Planning - Storm & Sanitary Sewers - Watermain
 700 Long Point Circle
 Ottawa, Ontario d.gray@dbgrayengineering.com

Project
PROPOSED 2-STORY MEDICAL FACILITY
 4405-4409 INNES ROAD
 OTTAWA, ONTARIO

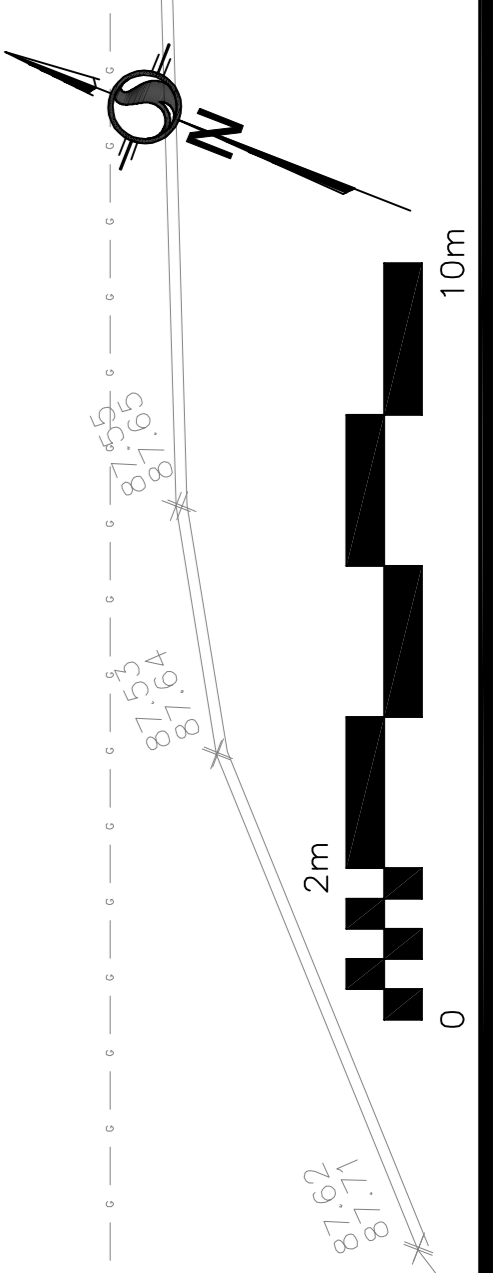
Drawing Title
SITE SERVICING PLAN (WEST)

Engineer's Seal

 Drawn: D.B.G.
 H. Scale: 1:100
 V. Scale: 1:100
 Date: JUL 15-25
 Job No.: 25061
 Drawing No.: **C-2**
 of **12**
 NOT VALID UNLESS SIGNED & DATED



APPROXIMATE EXTENT OF ROAD CUT REINSTATEMENT IN ACCORDANCE WITH CITY OF OTTAWA DRAWING No. R10



REFER TO NOTES & DETAILS ON DRAWING No. C-10 & C-11