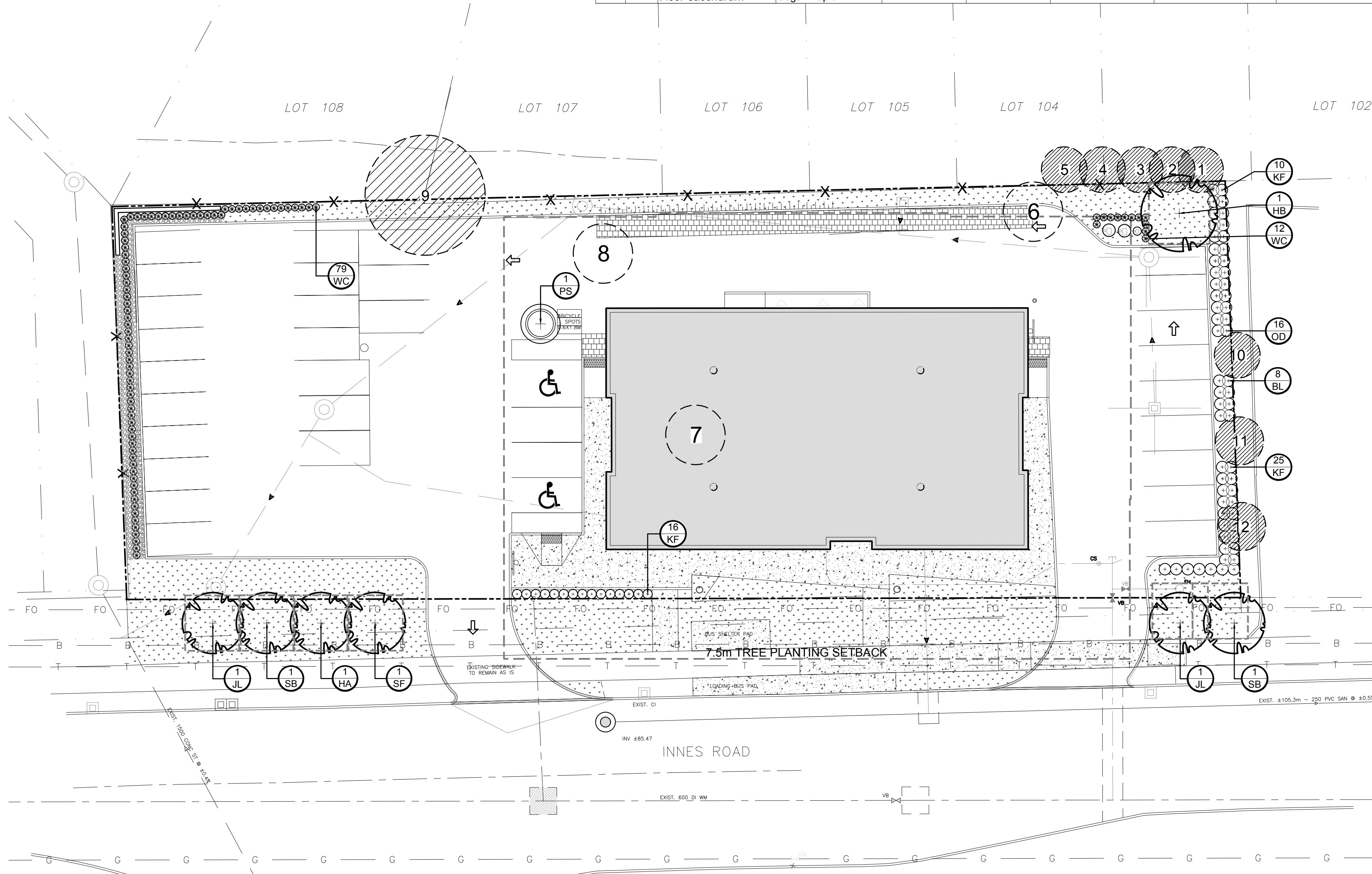


EXISTING TREE LIST								
KEY	QTY	BOTANICAL NAME	COMMON NAME	SIZE	CONDITION	REMARKS	OWNERSHIP	COMMENTS
1	1	<i>Picea glauca</i>	White Spruce	160mm DBH	Good	To remain	436 Grassland Terrace	Good condition
2	1	<i>Thuja occidentalis</i>	Eastern White Cedar	150mm DBH	Good	To remain	436 Grassland Terrace	Good condition
3	1	<i>Picea glauca</i>	White Spruce	160mm DBH	Good	To remain	436 Grassland Terrace	Good condition
4	1	<i>Thuja occidentalis</i>	Eastern White Cedar	130mm DBH	Good	To remain	436 Grassland Terrace	Good condition
5	1	<i>Thuja occidentalis</i>	Eastern White Cedar	130mm DBH	Good	To remain	436 Grassland Terrace	Good condition
6	1	<i>Pinus strobus</i>	White Pine	430mm DBH	Good	To be removed	4419 Innes Road	Good condition
7	1	<i>Acer saccharum</i>	Sugar Maple	300mm DBH	Good	To be removed	4419 Innes Road	Good condition
8	1	<i>Acer platanoides</i>	Norway Maple	530mm DBH	Poor	To be removed	4419 Innes Road	Good condition
9	1	<i>Acer platanoides</i>	Norway Maple	450mm DBH	Fair	To Remain	Jointly owned	Good condition
10	1	<i>Ginkgo biloba</i>	Maidenhair Tree	130mm DBH	Good	To Remain	4419 Innes Road	Good condition
11	1	<i>Acer saccharum</i>	Sugar Maple	180mm DBH	Poor	To Remain	4419 Innes Road	Good condition
12	*	<i>Acer saccharum</i>	Sugar Maple	180mm DBH	Fair	To Remain	4405 Innes Road	Some dieback

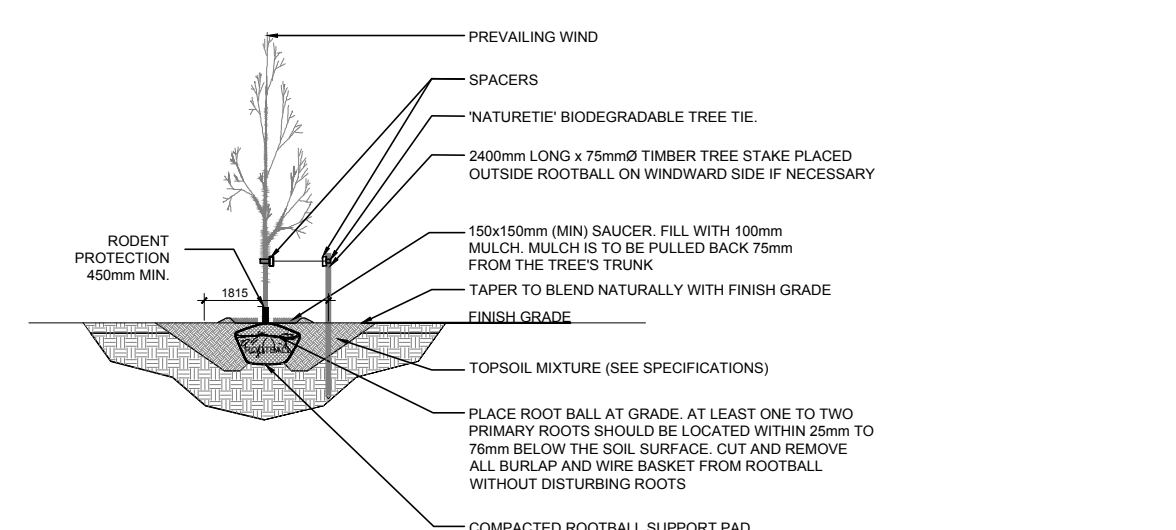


KEY PLAN: NTS

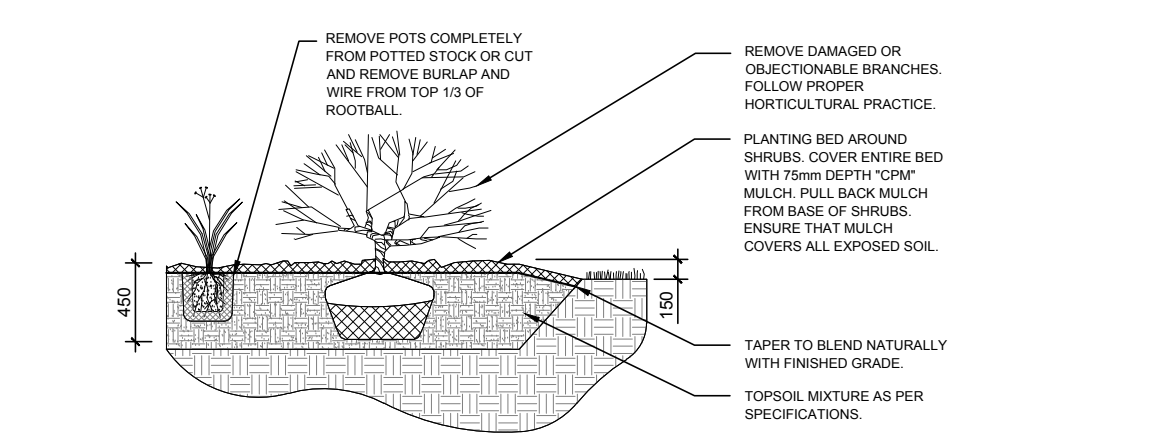
- GENERAL NOTES:**
- IT IS THE RESPONSIBILITY OF THE APPROPRIATE CONTRACTOR OR OFFICIAL TO REPORT ANY ERRORS, OMISSIONS OR DISCREPANCIES ON THIS PLAN WITH ACTUAL SITE CONDITIONS TO THE LANDSCAPE ARCHITECT BEFORE PROCEEDING WITH CONSTRUCTION.
 - THE CONTRACTOR IS TO NOTIFY ALL UTILITY COMPANIES AND AUTHORITIES PRIOR TO ANY EXCAVATION AND ASCERTAIN LOCATIONS OF UNDERGROUND SERVICES.
 - THE CONTRACTOR IS TO REINSTATE ALL AREAS AND ITEMS DAMAGED AS A RESULT OF CONSTRUCTION ACTIVITY.
 - THE CONTRACTOR IS TO COMPLY WITH ALL PERTINENT CODES AND BY-LAWS.
 - THE CONTRACTOR IS TO MAINTAIN A POSITIVE SURFACE RUN-OFF THROUGHOUT THE ENTIRE CONSTRUCTION PERIOD.
 - THE LANDSCAPE ARCHITECT IS NOT RESPONSIBLE FOR SUBSURFACE CONDITIONS.
 - THE CONTRACTOR IS TO IDENTIFY ALL EXISTING TREES TO REMAIN ON SITE WITH THE LANDSCAPE ARCHITECT PRIOR TO CONSTRUCTION.
 - THE CONTRACTOR IS TO STAKE THE PROPOSED LOCATION OF ALL PLANT MATERIAL IN CONJUNCTION WITH THE LANDSCAPE ARCHITECT PRIOR TO EXCAVATION.
 - MINIMUM DISTANCES FOR SELECTED DECIDUOUS TREES ARE AS FOLLOWS:
 - B.1. BUILDING FOUNDATIONS - 7.5M
 - 9.2. SIDEWALKS - 1.5M
 - 9.3. PUBLIC STREETS - 2.5M
 - 9.4. UNDERGROUND INFRASTRUCTURE - 2.0M
 - ALL TREES WITHIN 1M OF UNDERGROUND UTILITY TRENCHES ARE TO BE EXCAVATED BY HAND.
 - REMOVE ALL PROTECTIVE WRAPPING FROM TREE TRUNKS AFTER INSTALLATION.
 - STAKING OF TREES SHALL ONLY BE PERFORMED IF NECESSARY.
 - ENSURE THAT MULCH IS PULLED BACK A MINIMUM DISTANCE OF 75MM FROM BASE OF TREE TRUNK.
 - THE LANDSCAPE PLAN HAS BEEN PREPARED IN CONJUNCTION WITH THE GEOTECHNICAL INVESTIGATION PREPARED BY PATERSON GROUP APRIL 11TH, 2025

PROPOSED PLANT LIST						
KEY	QTY	BOTANICAL NAME	COMMON NAME	SIZE	CONDITION	SPACING
TREES						
HA	1	<i>Crataegus crus-galli var inermis</i>	Thornless Cockspur Hawthorn	50mm cal.	B&B	4000mm o.c.
*HB	1	<i>Celtis occidentalis</i>	Hackberry	50mm cal.	B&B	
JL	2	<i>Syringa reticulata</i>	Japanese Tree Lilac	50mm cal.	B&B	4000mm o.c.
*SB	2	<i>Amelanchier canadensis</i>	Shadblow Serviceberry	50mm cal.	B&B	4000mm o.c.
*SF	1	<i>Amelanchier laevis 'JFS-ARB'</i>	Spring Flurry Serviceberry	50mm cal.	B&B	4000mm o.c.
SHRUBS						
PS	1	<i>Caragana arborecens</i>	Siberian Pea Shrub	3 gallon pot	Potted	
*WC	91	<i>Thuja occidentalis 'Clumps'</i>	White Cedar Clumps	1500mm ht	Potted	600mm o.c.
ORNAMENTAL GRASSES						
BL	8	<i>Leymus arenarius 'Blue Dune'</i>	Blue Lyme Grass	250mm pot	Potted	400 mm o.c.
KF	51	<i>Calamagrostis 'Karl Foerster'</i>	Karl Foerster Grass	250mm pot	Potted	800 mm o.c.
OD	16	<i>Calamagrostis 'Overdam'</i>	Overdam Grass	250mm pot	Potted	400 mm o.c.

*INDICATES NATIVE SPECIES. ALL TREES ARE PROPOSED ON CITY PROPERTY- ALL SHRUBS AND ORNAMENTAL GRASSES ARE PROPOSED ON PRIVATE PROPERTY



2 DECIDUOUS TREE PLANTING SCALE: NTS



3 SHRUB / ORNAMENTAL GRASS PLANTING SCALE: NTS

LEGAL DESCRIPTION:	40 YEAR CANOPY CALCULATION:
4405 Innes Road: PART OF LOT A, CONCESSION 11, CUMBERLAND, AS IN N613193 SAVE AND EXCEPT PART 1 PLAN 4R19119.	-2,389 m2 site area
4409 Innes Road: PART OF LOT A, CONCESSION 11, CUMBERLAND, AS IN N623145 SAVE AND EXCEPT PART 2 PLAN 4R19119. OTTAWA.	-6 small trees proposed, 1 large tree proposed
	=196m2 canopy cover =8.2% canopy cover
	*Small tree calculated at 3m spread, large tree calculated at 14m spread

CLIENT **PREMIUM CONSTRUCTION**
 Unit#30-174 Colonnade Rd.
 Ottawa, Ontario, K2E 7J3

CONSULTANTS
 ARCHITECTS: **MANCZARSKI P. ENG**
 30 SAJ CRESCENT
 OTTAWA, ONTARIO K1G 5N8
 Tel: (613) 798-8882

&
Alexander Wilson Architect Inc.
 Admiralty Place
 103-20 Gore Street
 Kingston, Ontario, K7L 2L1



CIVIL ENGINEERS:
D. B. GRAY ENGINEERING INC.
 Stormwater Management - Grading & Drainage - Storm & Sanitary Sewers - Watermain

700 Long Point Circle
 Ottawa, Ontario
 613-425-8044
 d.gray@dbgrayengineering.com

- LEGEND**
- EXISTING TREE TO REMAIN
 - EXISTING TREE TO BE REMOVED
 - 25-30m³ SOIL VOLUME AT A 1.5m DEPTH PROPOSED DECIDUOUS TREE
 - PROPOSED SHRUBS/GRASSES/PERENNIALS
 - PROPOSED SOD
 - PROPOSED RIVERSTONE
 - PROPOSED CONCRETE
 - PROPOSED INTERLOCK

No.	Issue	Date	Author	DR	CK
4	REVISED PER CITY COMMENTS	04/08/2026	ML	JL	
3	REVISED PER CITY COMMENTS	12/19/2025	ML	JL	
2	REVISED PER CITY COMMENTS	10/03/2025	ML	JL	
1	ISSUED FOR DISCUSSION AND REVIEW	07/22/2025	ML	JL	

JAMES B. LENNOX & ASSOCIATES INC.
 LANDSCAPE ARCHITECTS
 3332 CARLING AVE. OTTAWA, ONTARIO K2H 5A8
 Tel: (613) 722-5168 Fax: (866) 343-3942

PROJECT
IDEAL HEALTH CENTRE
 4405 AND 4409 INNES ROAD, OTTAWA ON

DRAWING
TREE CONSERVATION REPORT AND LANDSCAPE PLAN

STAMP

SCALE
 AS SHOWN

START DATE
 JUNE 2025

PROJECT NO.
 25MIS2538

PROJECT NORTH

DRAWING NO.
L.1

PLOT SIZE ARCH-D