

**LEGEND**

FFL	FINISHED FLOOR ELEVATION
TOF	TOP OF FOUNDATION
USF	UNDERSIDE OF FOOTING
---	PROPERTY LINE
CB	CATCH BASIN
CI	CURB INLET
MH	STORM MANHOLE
MH	SANITARY MANHOLE
FH	FIRE HYDRANT
CS	CURB STOP & SERVICE POST
VB	VALVE & VALVE BOX
SAN	SANITARY SEWER
ST	STORM SEWER
WS/WM	WATER SERVICE/WATERMAIN
OBV	OBVERT
SPL	SPRINGLINE
INV	INVERT
US	UNDERSIDE



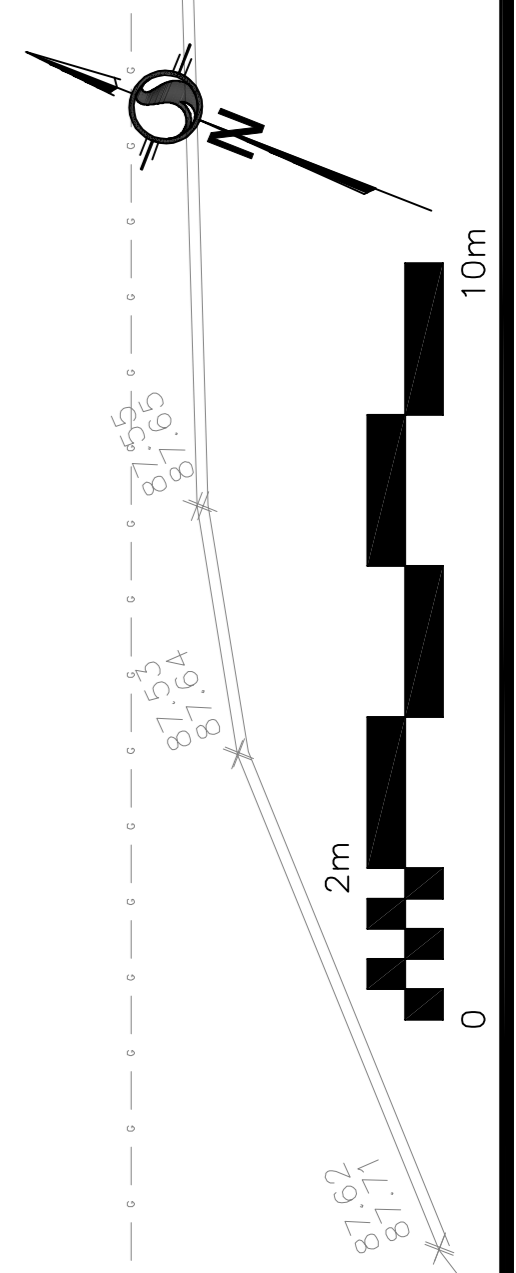
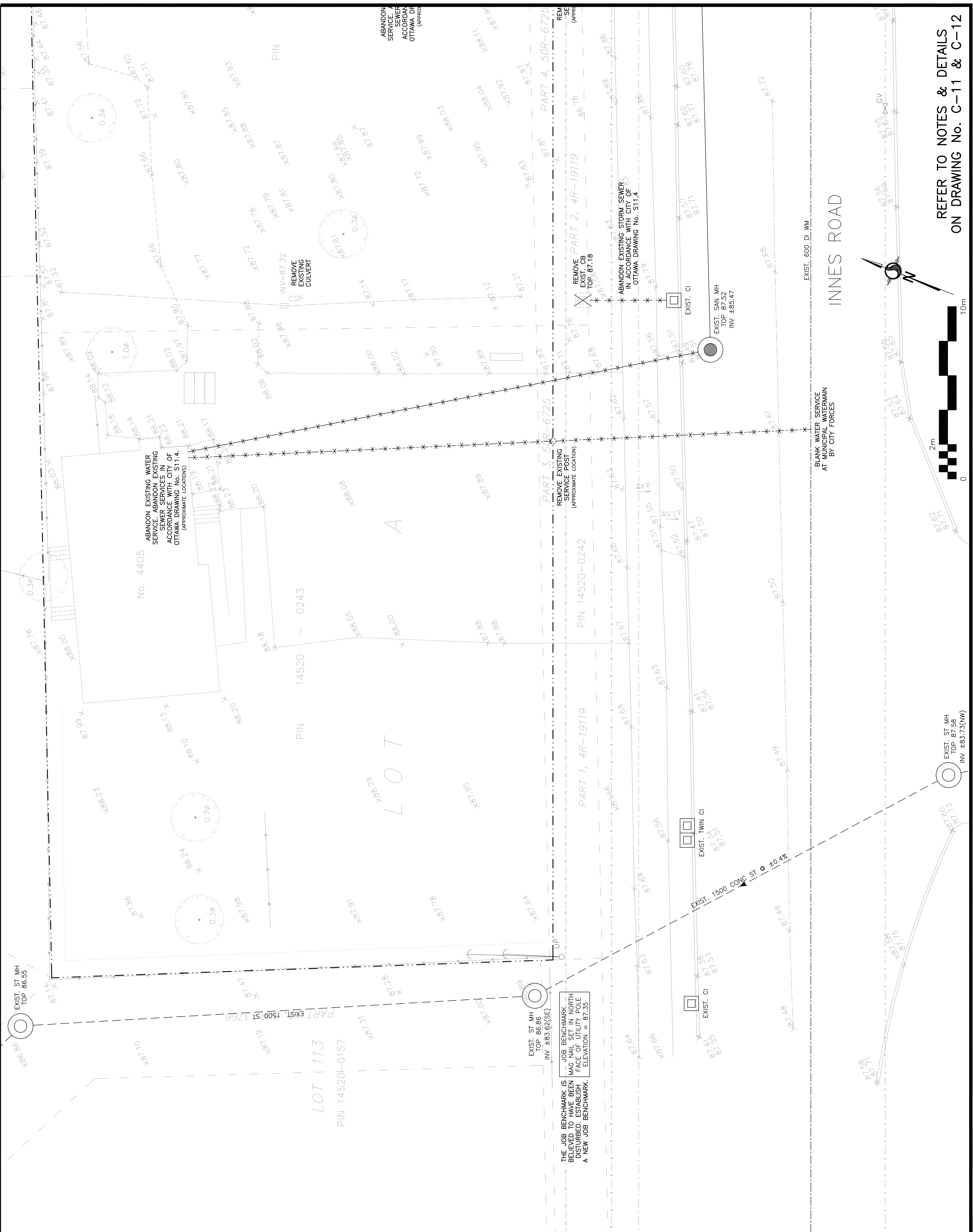
No.	DATE	REVISION
3	JAN 14-26	ISSUED FOR CONSTRUCTION
2	DEC 16-25	RE-ISSUED FOR APPROVAL
1	JUL 15-25	ISSUED FOR APPROVAL

**D. B. GRAY ENGINEERING INC.**  
 Professional Engineers - Consulting & Planning - Storm & Sanitary Sewers - Watermain  
 700 Long Point Circle  
 Ottawa, Ontario d.gray@dbgrayengineering.com  
 613-425-8044

**PROPOSED 2-STORY MEDICAL FACILITY**  
 4405-4409 INNES ROAD  
 OTTAWA, ONTARIO

**EXISTING CONDITIONS (WEST)**

Engineer's Seal  
  
 Drawn: D.B.G.  
 H. Scale: 1:100  
 V. Scale: 1:100  
 Date: JUL 15-25  
 Job No.: Z5061  
 Drawing No.: C-4 of 12  
 NOT VALID UNLESS SIGNED & DATED



**REFER TO NOTES & DETAILS ON DRAWING No. C-11 & C-12**

THE JOB BENCHMARK IS BELIEVED TO HAVE BEEN DISTURBED. ESTABLISH A NEW JOB BENCHMARK.

EXIST. ST MH TOP 86.86 INV ±83.62(SE)

EXIST. ST MH TOP 87.58 INV ±83.73(NW)

ABANDON EXISTING WATER SERVICE. ABANDON EXISTING SEWER SERVICES IN ACCORDANCE WITH CITY OF OTTAWA DRAWING No. S11.4. (APPROXIMATE LOCATIONS)

ABANDON EXISTING STORM SEWER IN ACCORDANCE WITH CITY OF OTTAWA DRAWING No. S11.4

BLANK WATER SERVICE AT MUNICIPAL WATERMAIN BY CITY FORCES

EXIST. 600 DI WM

REMOVE EXISTING SERVICE POST (APPROXIMATE LOCATION)

REMOVE EXISTING STORM SEWER IN ACCORDANCE WITH CITY OF OTTAWA DRAWING No. S11.4

LOT

LOT 113  
 PIN 14520-0157

PIN 14520-0243

No. 4405