

PROJECT INFORMATION

Zoning By-law 2008-250 / 2026-50	R4Z / N4B	SITE AREA	0.9 ha.	9,219.4 m ² 99,237 ft ²
ZONING	REQUIRED	PROVIDED		
ZONE: PLANNED UNIT DEVELOPMENT: STACKED STYLE TOWNHOUSE	R4Z / N4B	R4Z / N4B		
BUILDING HEIGHT	14.5m	9.3m		
MINIMUM LOT WIDTH	7.5m	53.8m		
MINIMUM LOT AREA	1,400m ²	9,219.4m ²		
FRONT YARD SETBACK: BUCKBEAN AVENUE	3.0m	5.8m		
CORNER YARD SETBACK: SPOOR STREET & DANDELION MEWS	3.0m	6.8m & 5.7m		
INTERIOR YARD SETBACK: PATHWAY	1.2m	9.6m		
REAR YARD SETBACK	6.0m	7.7m		
BUILDING SETBACK TO A PRIVATE WAY	1.8m	4.8m		
BUILDING SEPARATION (UNDER 14.5m HT.)	1.2m	6.0m		
AMENITY AREA - TOTAL 6.0m ² PER UNIT	360.0m ²	380.0m ²		
AMENITY AREA - 50% COMMUNAL PER UNIT	180.0m ²	220.0m ²		
VEHICLE PARKING - RESIDENTIAL - 1.2 PER UNIT	72	73		
VEHICLE PARKING - VISITOR - 0.2 PER UNIT	12	12		
BICYCLE PARKING - RESIDENTIAL - 0.5 PER UNIT	30	30		
aisle & DRIVEWAY MINIMUM / MAXIMUM WIDTH	6.0m / 6.7m	6.2m / 6.7m		
MINIMUM WIDTH OF LANDSCAPED AREA - ABUTTING A RESIDENTIAL ZONE	3.0m	3.0m		
MINIMUM WIDTH OF LANDSCAPED AREA - ABUTTING A STREET	3.5m	3.0m		
MINIMUM WIDTH OF LANDSCAPED AREA - AROUND A PARKING LOT	15%	26.5%		
MINIMUM LANDSCAPED AREA - IN A PLANNED UNIT DEVELOPMENT	25%	43.3%		
MINIMUM AGGREGATED SOFT LANDSCAPE AREA - 3.0m SETBACK & LOT WIDTH 12m+	40%	97.5%		

IT IS THE RESPONSIBILITY OF THE APPROPRIATE CONTRACTOR TO CHECK AND VERIFY ALL DIMENSIONS ON SITE AND TO REPORT ALL ERRORS AND/OR OMISSIONS TO THE ARCHITECT.

ALL CONTRACTORS MUST COMPLY WITH ALL PERTINENT CODES AND BY-LAWS.

THIS DRAWING MAY NOT BE USED FOR CONSTRUCTION UNTIL SIGNED BY THE ARCHITECT.

DO NOT SCALE DRAWINGS.

- ### DRAWING NOTES
- PROPERTY LINE
 - PARKING SPACE: STANDARD SIZE 2.6 x 5.2 METRES
 - PROPOSED HYDRO TRANSFORMER
 - ASPHALT DRIVING SURFACE
 - IN GROUND WASTE BINS
 - ORGANIC WASTE / OVER SIZED GARBAGE ENCLOSURE 2.0m HIGH OPAQUE SCREEN AROUND PERIMETER
 - BICYCLE PARKING SPACES 0.6m x 1.8m (6) WITH RACK
 - PROPOSED HYDRANT
 - SEASONAL SNOW STORAGE
 - CANADA POST MAIL BOXES ON CONCRETE SURFACE
 - 1.8m WIDE CONCRETE CROSSWALK PAINTED WITH TWSI
 - DEPRESSED STREET CURB & SIDEWALK, CONTINUOUS AND DEPRESSED @ DRIVEWAY
 - SOFT LANDSCAPED AREA, SEE LANDSCAPING
 - 1.8m WIDE CONCRETE WALK
 - ACCESSIBLE PARKING SPACE WITH ACCESS AISLE, DEPRESSED CURB AND TWSI
 - EXISTING CITY SIDEWALK, WIDTH VARIES
 - EXISTING HYDRO TRANSFORMER WITH EASEMENT
 - LIGHT POLE: LOCATION TO BE CONFIRMED BY ELEC.
 - EXISTING CHAIN LINK FENCE TO REMAIN, ALTER AS REQUIRED FOR NEW CONNECTION PATH

GROSS BUILDING - AREAS

(CITY OF OTTAWA'S DEFINITION)

PROPOSED BUILDING 'A'	1,256.0 m ²
PROPOSED BUILDING 'B'	1,256.0 m ²
PROPOSED BUILDING 'C'	1,256.0 m ²
PROPOSED BUILDING 'D'	1,256.0 m ²
PROPOSED BUILDING 'E'	1,256.0 m ²
TOTAL PROPOSED AREA	6,280.0 m²

UNIT STATISTICS

2 BEDROOM UNIT

RESIDENCE	- 1.2 PER UNIT	72
VISITOR	- 0.2 PER DWELLING UNIT	12
TOTAL		84

CAR PARKING

REQUIRED by ZONING BY-LAW

RESIDENCE	- 1.2 PER UNIT	72
VISITOR	- 0.2 PER DWELLING UNIT	12
TOTAL		84

BICYCLE PARKING

REQUIRED	- 0.5 PER UNIT	30
PROVIDED		30

WASTE COLLECTION

GUIDELINES	REQUIRED	PROVIDED
GARBAGE	- 0.231 YARDS ³ / UNIT	13.9 YARDS ³
RECYCLING (GMP)	- 0.018 YARDS ³ / UNIT	1.1 YARDS ³
RECYCLING (FIBRE)	- 0.062 YARDS ³ / UNIT	3.7 YARDS ³
ORGANICS	- 240L CONTAINER / 50 UNITS 1.2 x 240L	

AMENITY REQUIREMENT

REQUIRED AMENITY SPACE	PROVIDED AMENITY SPACE
6.0 m ² PER UNIT =	360.0 m ²
50% COMMUNAL AMENITY AREA =	180.0 m ²
TOTAL =	380.0 m²

SITE COVERAGE

BUILDING FOOTPRINT =	22.7%	2,093.5 m ²
DRIVING SURFACE =	27.2%	2,509.3 m ²
LANDSCAPE AREA =	50.1%	4,616.6 m ²
TOTAL =	100.0%	9,219.4 m²
HARD SURFACE WALK AREA =	6.7%	621.0 m ²
SOFT LANDSCAPE AREA =	43.3%	3,995.6 m ²

PROJECT DEVELOPER

Claridge Homes
505 Preston Avenue
Ottawa ON, K1S 4N7
Tel.: (613) 233-6030
E-Mail: shawn.malhotra@claridgehomes.com
E-Mail: marc.stpierre@claridgehomes.com
E-Mail: victoria.st.pierre@claridgehomes.com

URBAN PLANNER

Novatech Eng. Consultants Limited
200 - 240 Michael Cowpland Drive
Ottawa, Ontario, K2M 1P6
Tel: 613 254-9643
Email: r.tran@novatech-eng.com

CIVIL ENGINEER

Novatech Eng. Consultants Limited
200 - 240 Michael Cowpland Drive
Ottawa, Ontario, K2M 1P6
Tel: 613 254-9643
Email: g.Macdonald@novatech-eng.com

LANDSCAPE ARCHITECT

James B. Lennox & Associates Inc.
3332 Carling Ave.
Ottawa, Ontario, K2H 5A8
Tel: 613-722-5168
Email: ml@jbla.ca

TRANSPORTATION ENGINEER

Novatech Eng. Consultants Limited
200 - 240 Michael Cowpland Drive
Ottawa, Ontario, K2M 1P6
Tel: 613 254-9643
Email: B.Byveldts@novatech-eng.com

GEOTECHNICAL ENGINEER

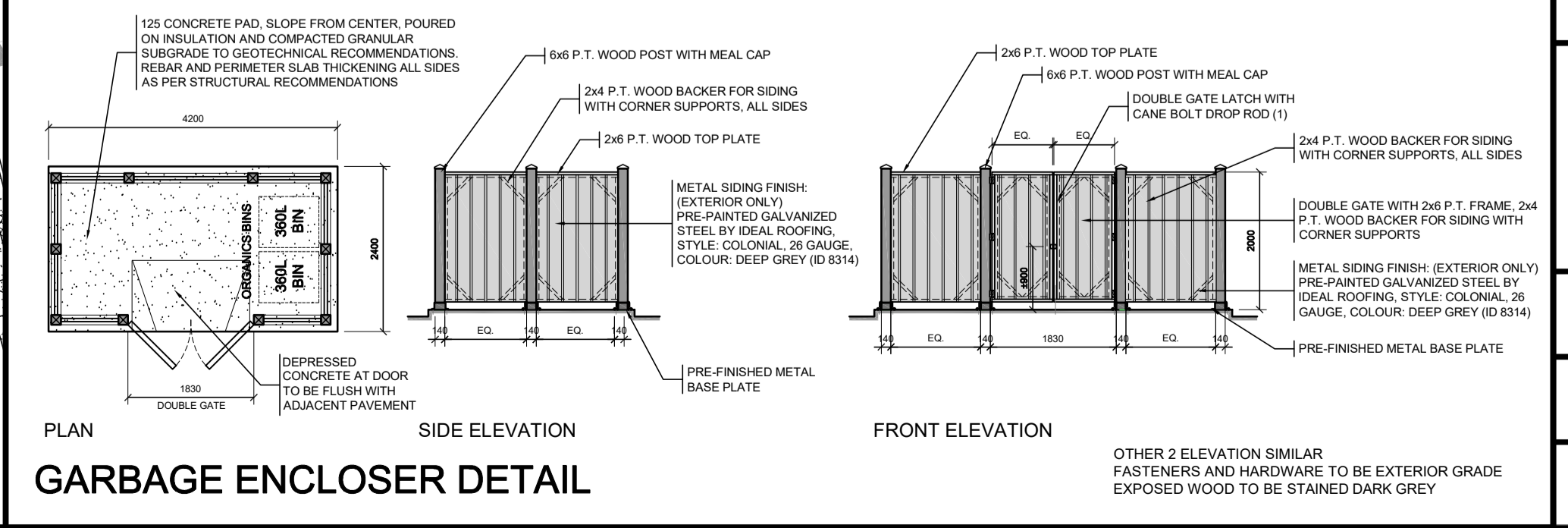
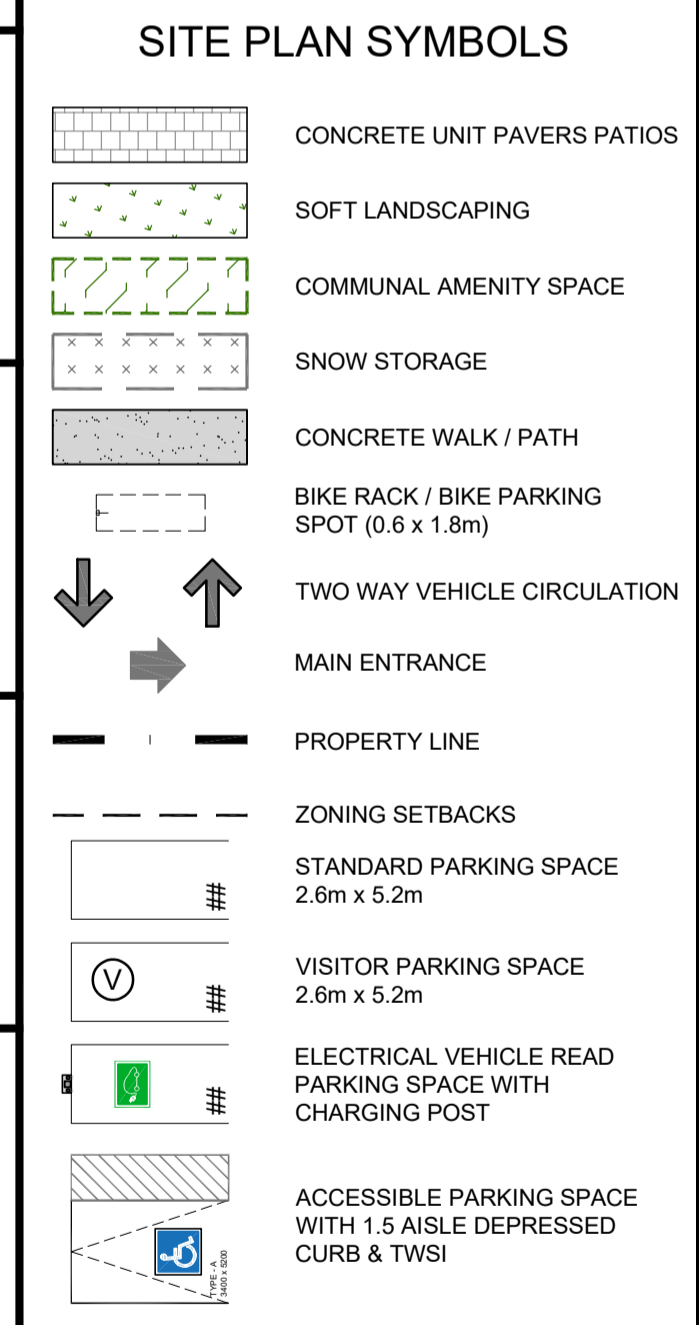
Paterson Group
9 Auriga Drive
Ottawa, Ontario K2E 7T9
Tel: 613.226-7381
Email: sdennis@patersongroup.ca

LEGAL DESCRIPTION

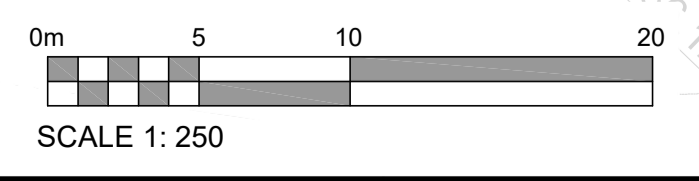
PRELIMINARY 4M-PLAN BLOCK 73
Geographic Township of March
CITY OF OTTAWA
Surveyed by Annis, O'Sullivan, Vollebek Ltd.

SURVEYOR

Annis O'Sullivan Vollebek Ltd.
14 Concourse Gate, Suite 500,
Nepean, Ontario K2E 7S6
Tel: (613) 727-0850
E-Mail: TravisH@aovltd.com



1 SITE PLAN
SCALE = 1 : 250



SITE PLAN

ARCHITECT: **rla / architecture**
roderick lahey architect inc.
56 beach street, ottawa, ontario K1S 3J6
t. 613.724.9932 f. 613.724.1209 rlaarchitecture.ca

PROJECT TITLE:
COPPERWOOD ESTATES

1100 SPOOR STREET
BLOCK 73: NORTH KANATA

OTTAWA ONTARIO

DRAWN: R.V. CHECKED: RV

SCALE: 1:250 SHEET No. **SP-1**

PROJECT No. 2513