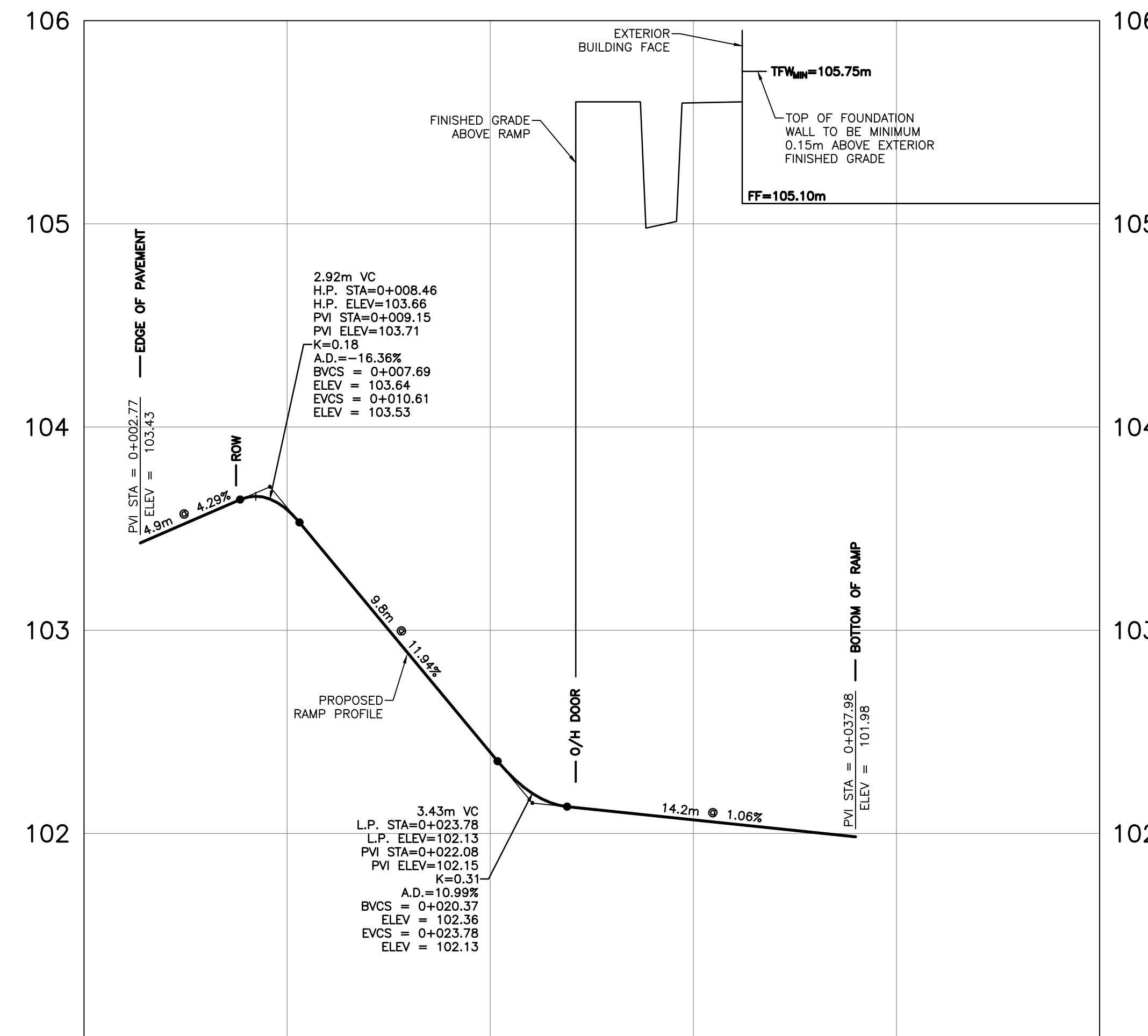
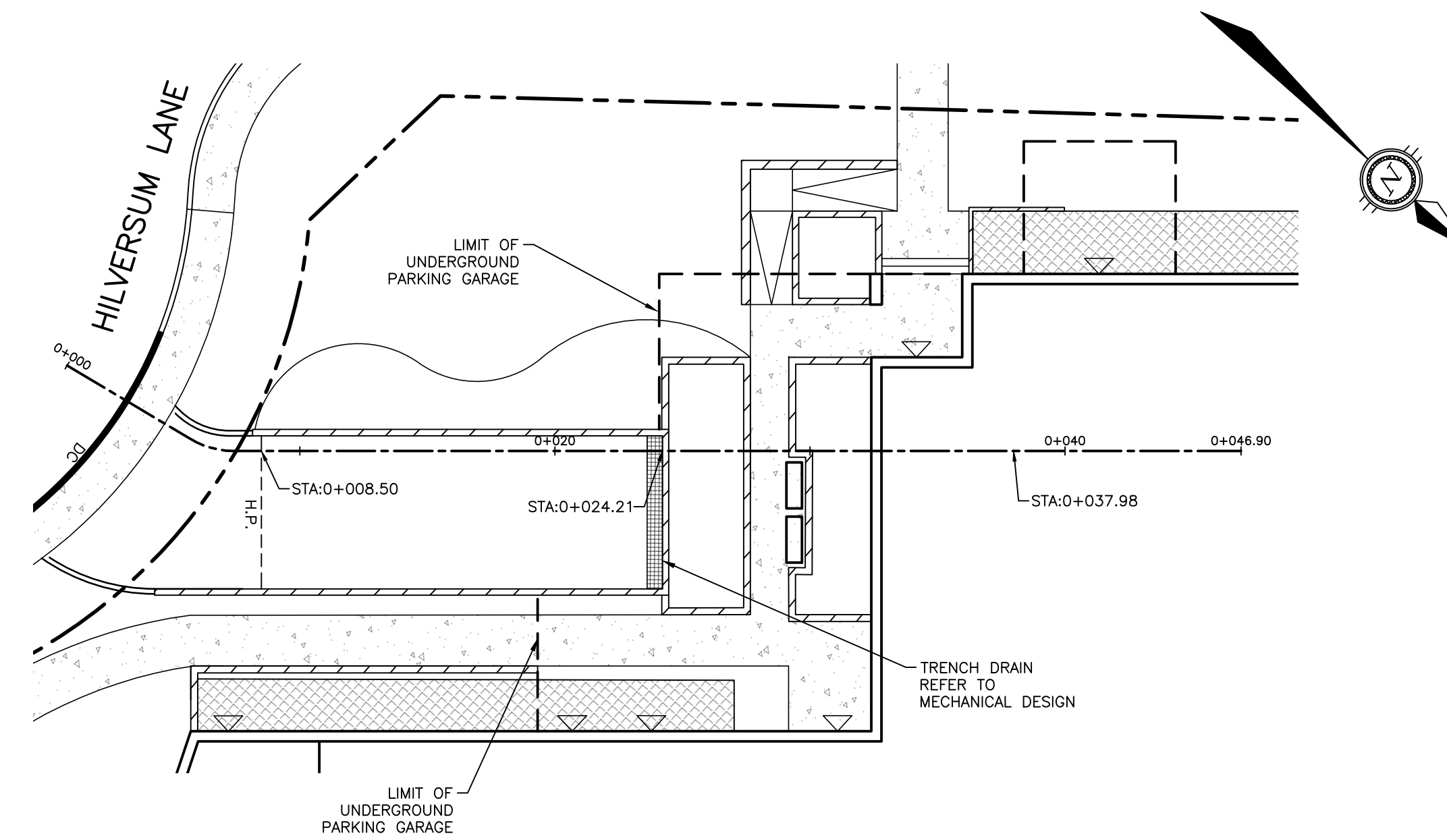
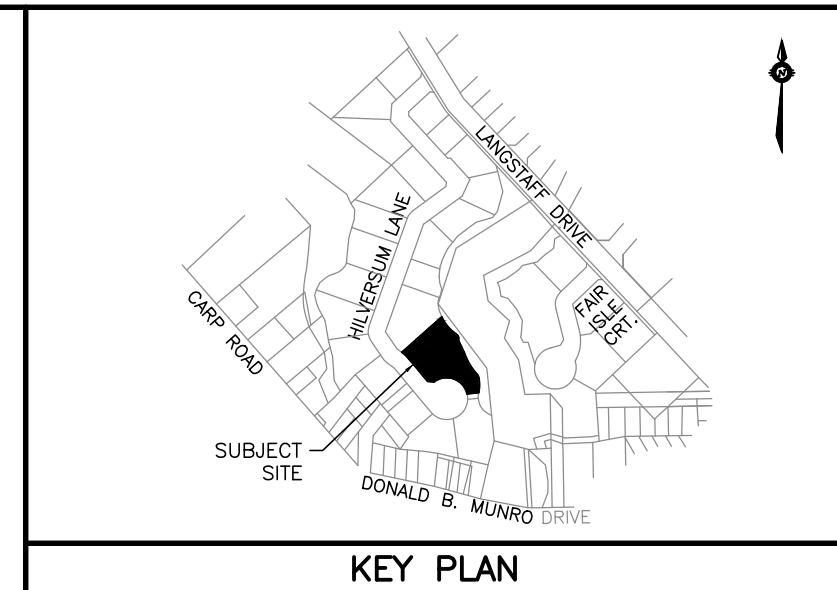


NOT FOR CONSTRUCTION

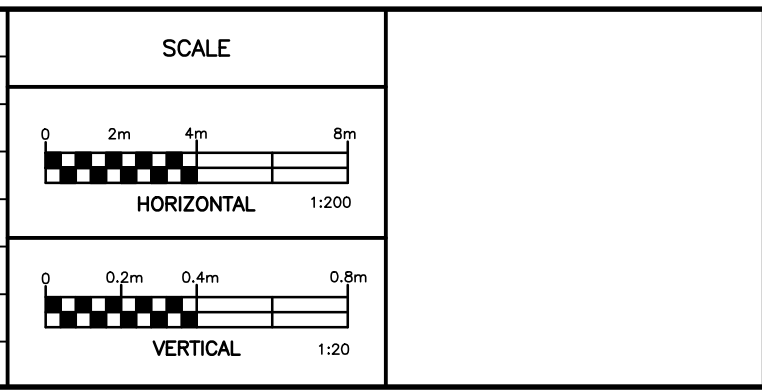


| | | | | | | | | | | | |
|-------------------------|--------|--------|--------|--------|--------|--------|--------|--------|--------|--------|-------------------------|
| PROPOSED RAMP ELEVATION | 103.43 | 103.66 | 103.65 | 103.59 | 102.40 | 102.20 | 102.07 | 101.98 | 101.98 | 101.98 | PROPOSED RAMP ELEVATION |
| CHAINAGE | 0+000 | 0+010 | 0+020 | 0+030 | 0+040 | 0+050 | 0+060 | 0+070 | 0+080 | 0+090 | CHAINAGE |

NOTES
 THE POSITION OF ALL POLE LINES, CONDUITS, WATERMANS, SEWERS AND OTHER UNDERGROUND AND OVERGROUND UTILITIES AND STRUCTURES IS NOT NECESSARILY SHOWN ON THE CONTRACT DRAWINGS, AND WHERE SHOWN, THE ACCURACY OF THE POSITION OF SUCH UTILITIES AND STRUCTURES IS NOT GUARANTEED. BEFORE STARTING WORK, DETERMINE THE EXACT LOCATION OF ALL SUCH UTILITIES AND STRUCTURES AND ASSUME ALL LIABILITY FOR DAMAGE TO THEM.

GEODETIC SURVEY DERIVED FROM COSINE STATION 0011968U054. LOCATION DESCRIPTION: OLD HIGHWAY 17 BRIDGE OVER CARP RIVER ON CARP-STITTSVILLE ROAD, 0.2 KM SOUTH OF C.N.R. CROSSING IN VILLAGE OF CARP. TABLET IN TOP OF WEST WALL, 30 CM FROM NORTH END, 24 CM FROM WEST EDGE. VERTICAL CONTROL DATA, DATUM: CGVD28-78, FIRST ORDER, ELEVATION: 93.861. COORDINATE SYSTEM: MTM ZONE 9; NAD 83 DATUM (CAN83-9)

| NO. | REVISION DESCRIPTION | DATE | BY |
|-----|--------------------------------|----------|-----|
| 3 | REVISED PER CITY/MVCA COMMENTS | 08/04/26 | BLM |
| 2 | REVISED PER CITY COMMENTS | 12/02/26 | BLM |
| 1 | ISSUED FOR REVIEW | 21/11/25 | BLM |



Robinson Land Development
 2936 Baseline Road,
 Suite 200, Ottawa, ON
 K2H 1B3
 (613) 592-6060 rcii.com

| | |
|----------|-----|
| DESIGN | BLM |
| CHECKED | SG |
| DRAWN | BLM |
| CHECKED | SG |
| APPROVED | BLM |

INVERNESS HOMES
 38 AURIGA DRIVE, SUITE 200
 OTTAWA, ON K2E 8A6

391 HILVERSUM LANE
 CARP, ON

PARKING GARAGE RAMP
PLAN & PROFILE

| | |
|-------------|----------------------|
| PROJECT No. | 25094 |
| SURVEY | ROBINSON CONSULTANTS |
| DATED | APRIL 2026 |
| DWG. No. | 25094-P1 |

FILE No. D07-12-25-0155 PLAN No. 19436