

No.	Issued For:	Date:
1	For SPA	Nov 03-2025
2	Revisions for SPA	Jan 12-2026
3	Revisions for SPA	Jan 14-2026
4	Revisions for SPA	Jan 22-2026
5	Revisions for SPA	Apr 07-2026
6	Revisions for SPA	Apr 09-2026

It is the responsibility of the appropriate Contractor to verify all dimensions on site and report all errors and/or omissions to the Architect.

All Contractors must comply with pertinent codes & by-laws.

Do not scale drawings. This drawing may not be used for construction until signed. Architect's copyright reserved.

Metric Scale Drawing: All measurements are in millimeters (mm) unless otherwise noted.

Symbol Legend:



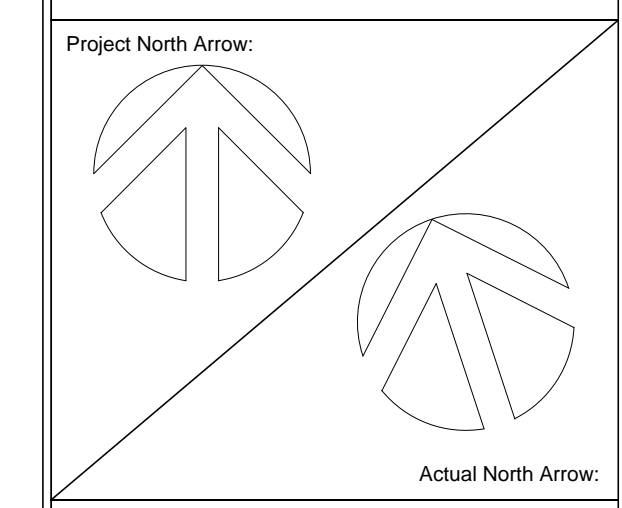
Developer:
Inverness Homes
Corp. ON, 613 831-9111
Invernesshomes.ca

Planning:
Brigitte Alchawa, MCIP, RPP
Keeper Co.
130 Kings Creek Road, Ashton, ON
brigitte@keeperco.ca

Civil Engineering:
Brandon Mackechnie, P. Eng.
RCI Land Development
2936 Baseline Road, Ottawa, ON
www.rci.com

Landscape Design:
Rudy Levstek, Landscape Architect
Levstek Consultants
5871 Hugh Crescent, Ottawa, ON
rlevstek@larocquelevstek.com

Surveyor:
John H. Cutri OLS, President
Fairhall Moffatt & Woodland Limited
Ontario Land Surveyors
100-600 Terry Fox Drive, Kanata, ON
(613) 591-2580 / john@fmw.ca



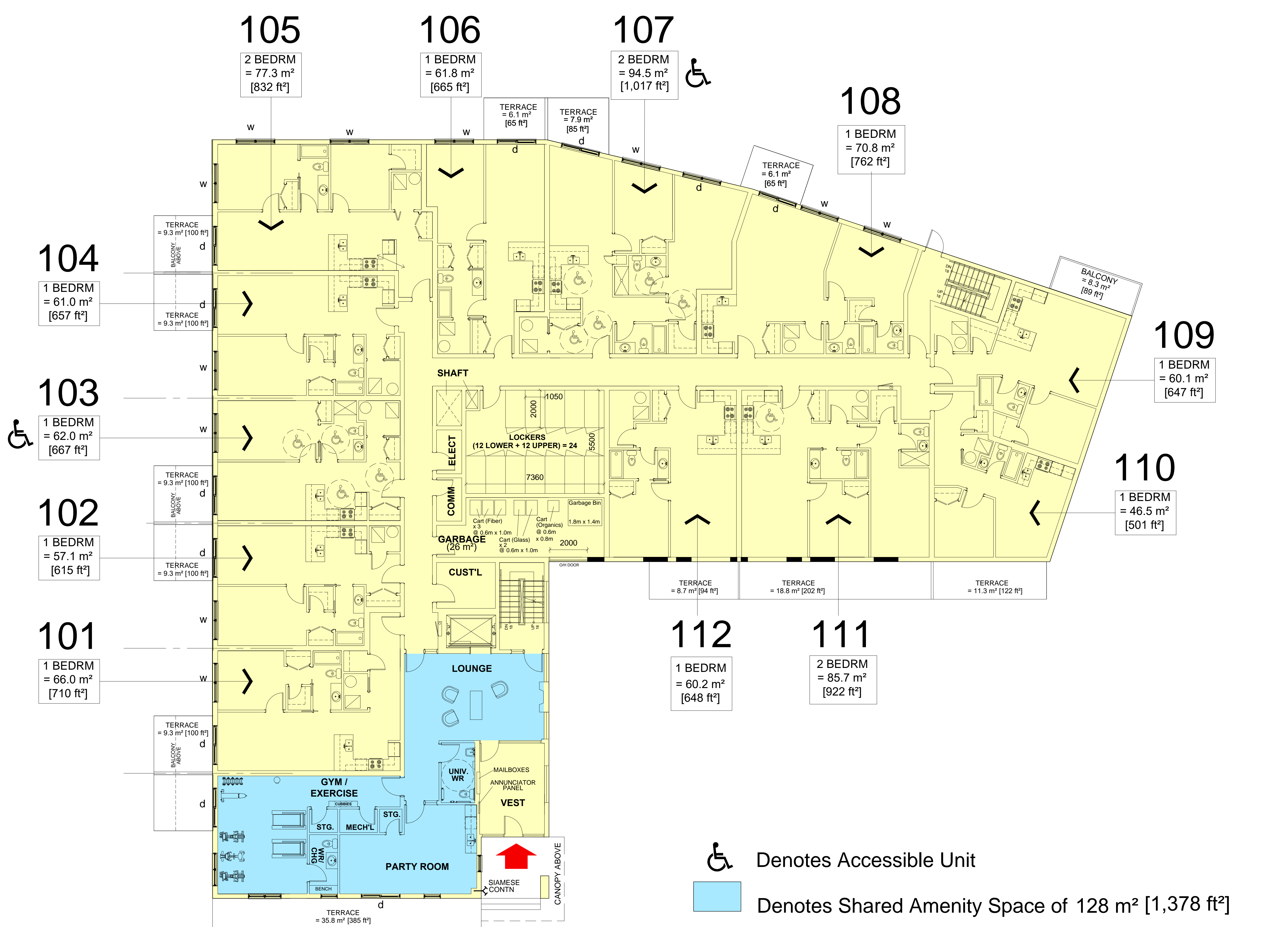
Architect:


Peter Mansfield, Architect
B. Tech., M. Arch., O.A.A.
122 Bridge Street, Almonte, ON
613-256-5213

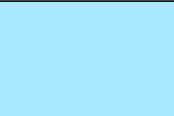
Project Title:
Proposed Apartment Building
391 Hiversum Lane, Carp, ON

Drawing List:
Ground Floor Plan

Job No.:	2404	Drawing No.:	A1
Scale:	As Noted		
Date:	Nov 03-2025		
Drawn By:	Reviewed By:		
PM	PM		



 Denotes Accessible Unit

 Denotes Shared Amenity Space of 128 m² [1,378 ft²]

Ground Floor Plan

D07-12-25-0155 / Plan No. 19436