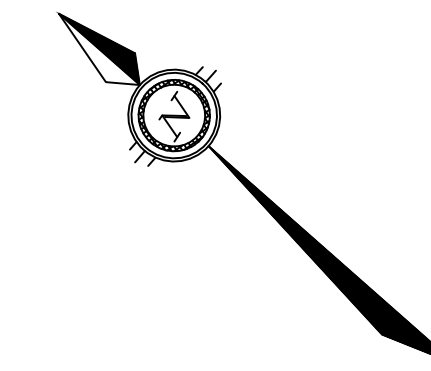
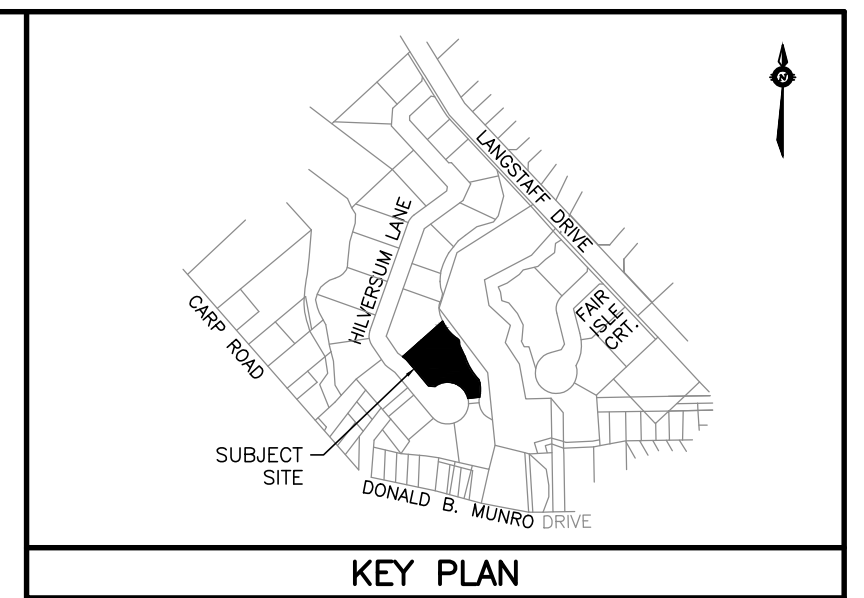
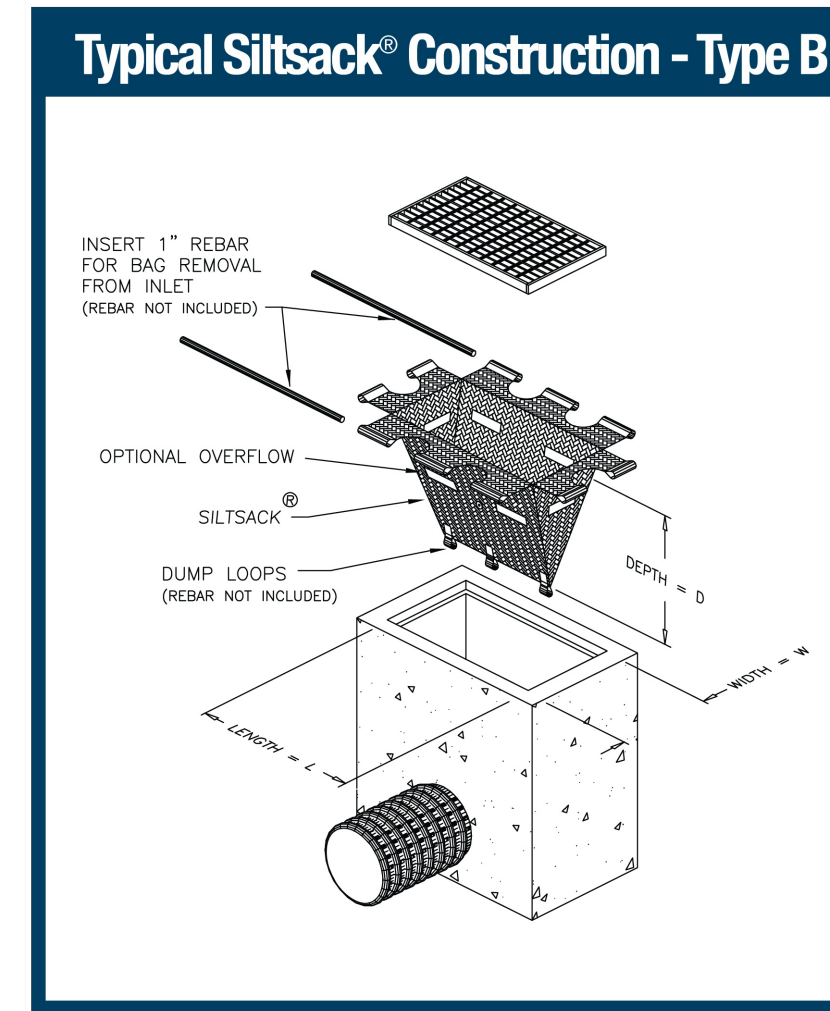
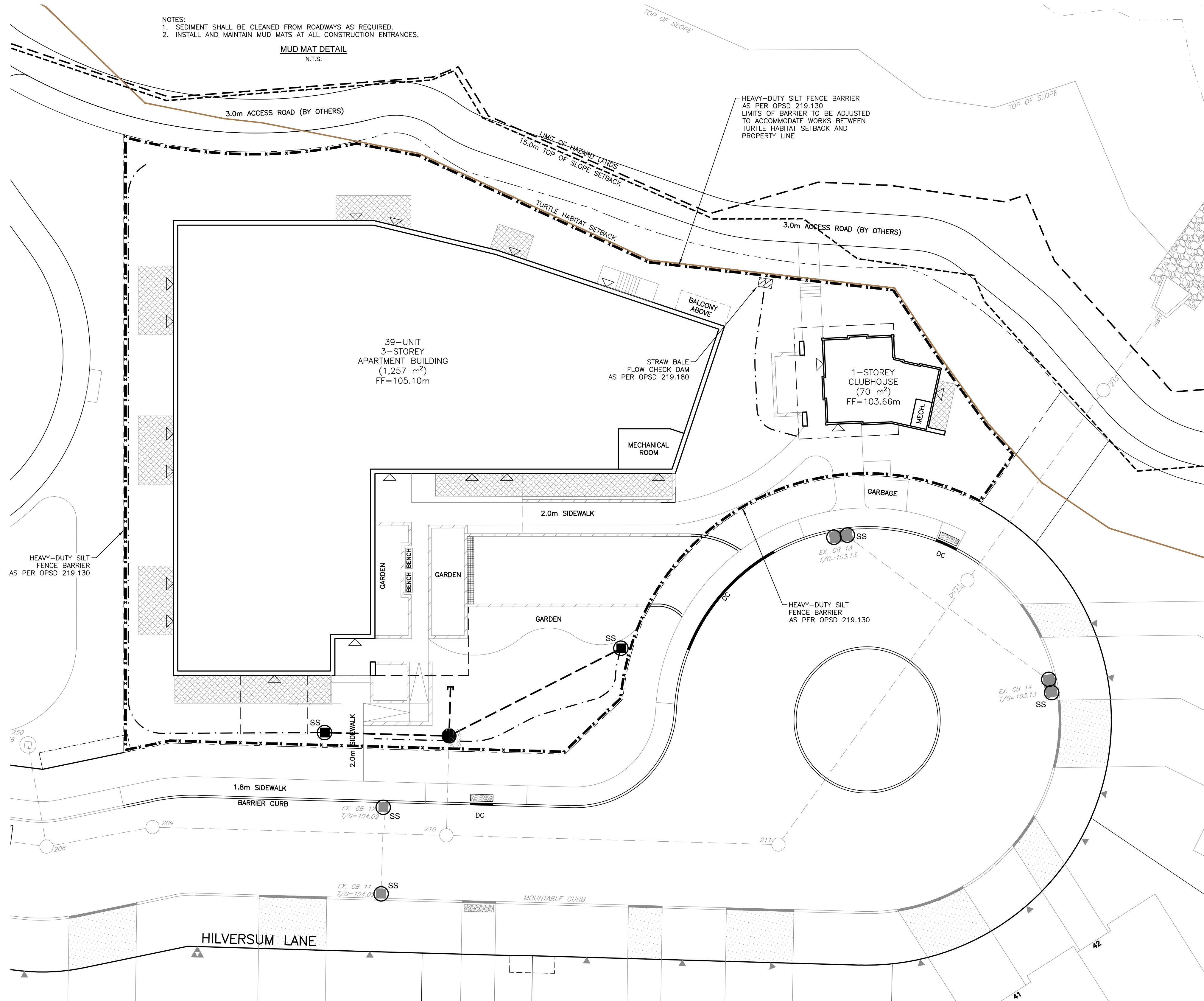


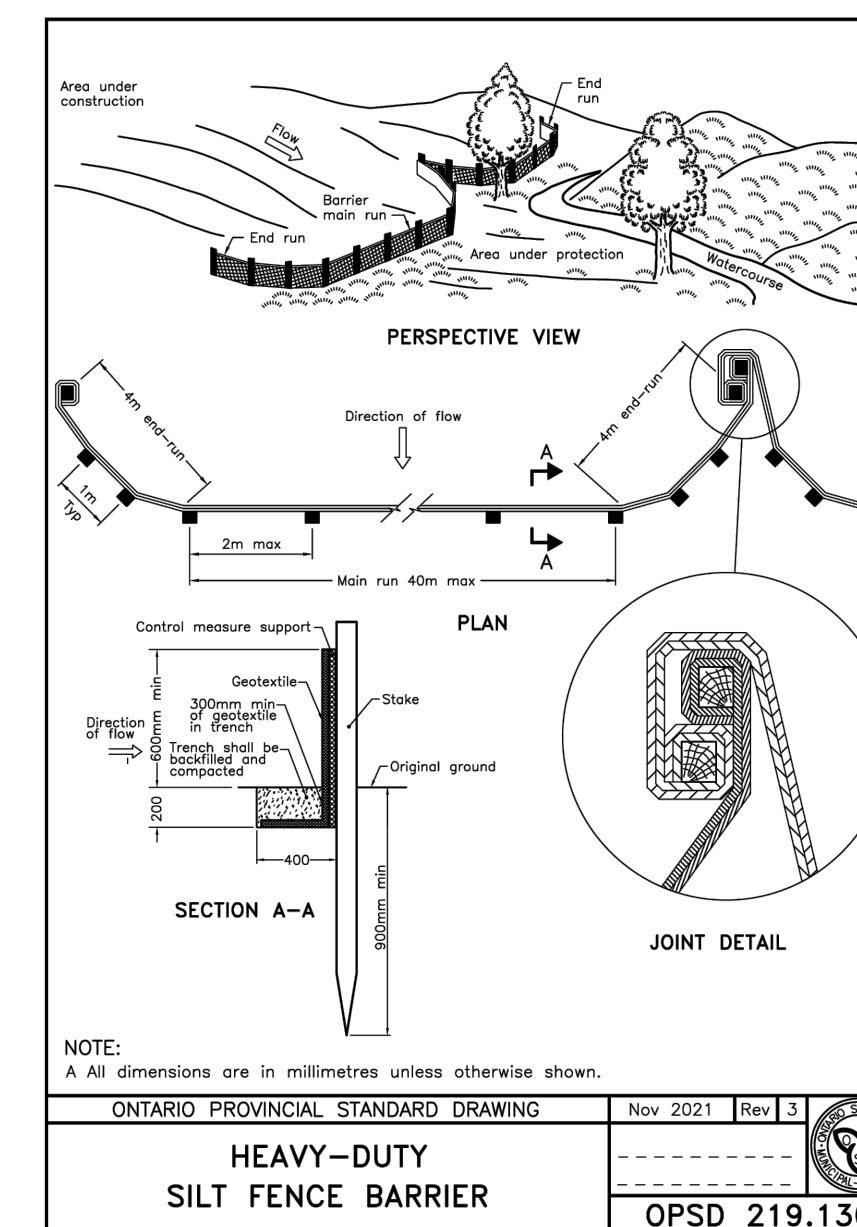
- NOTES:  
 1. SEDIMENT SHALL BE CLEANED FROM ROADWAYS AS REQUIRED.  
 2. INSTALL AND MAINTAIN MUD MATS AT ALL CONSTRUCTION ENTRANCES.

MUD MAT DETAIL  
N.T.S.

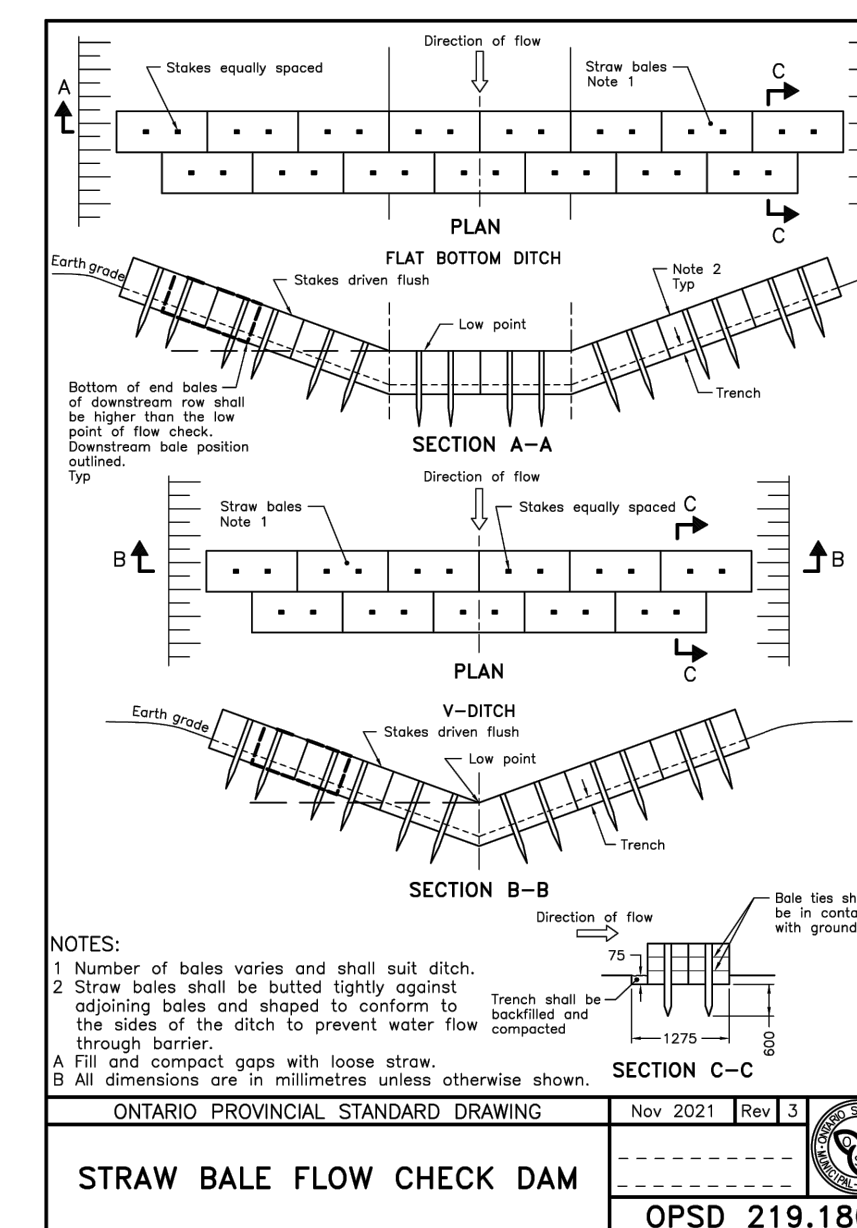


LEGEND

- PROPERTY BOUNDARY
- - - LIMIT OF HAZARD LANDS
- - - 15.0m TOP OF SLOPE SETBACK
- - - TURTLE HABITAT SETBACK (AS PER EIS)
- EXISTING CATCH BASIN
- EXISTING STORM SEWER & MANHOLE
- CATCH BASIN
- STORM SEWER & MANHOLE
- - - SWALE
- - - HEAVY-DUTY SILT FENCE BARRIER
- SS SILT SACK (OR APPROVED EQUIVALENT)
- ▨ STRAW BALE FLOW CHECK DAM



HEAVY-DUTY SILT FENCE BARRIER  
 OPSD 219.130



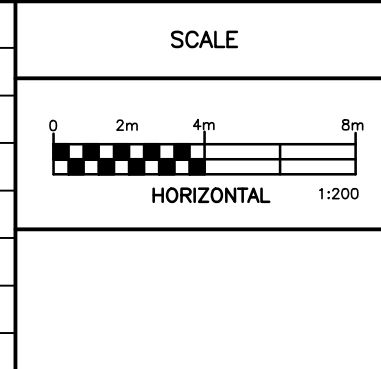
STRAW BALE FLOW CHECK DAM  
 OPSD 219.180

- NOTES:
- THE CONTRACTOR SHALL IMPLEMENT EROSION AND SEDIMENT CONTROL MEASURES TO PROVIDE FOR PROTECTION OF THE AREA DRAINAGE SYSTEM AND THE ULTIMATE RECEIVING WATERCOURSE DURING CONSTRUCTION ACTIVITIES. THE CONTRACTOR ACKNOWLEDGES THAT FAILURE TO IMPLEMENT APPROPRIATE EROSION AND SEDIMENT CONTROL MEASURES MAY BE SUBJECT TO PENALTIES IMPOSED BY ANY APPLICABLE REGULATORY AGENCY.
  - LIMIT THE EXTENT OF EXPOSED SOILS AT ANY GIVEN TIME.
  - EROSION AND SEDIMENT CONTROL MEASURES SHALL BE MAINTAINED UNTIL VEGETATION HAS BEEN RE-ESTABLISHED IN ALL DISTURBED AREAS. RE-VEGETATE DISTURBED AREAS AS SOON AS POSSIBLE.
  - CONTRACTOR SHALL MINIMIZE THE AMOUNT OF STOCKPILED MATERIAL. ALL STOCKPILED SOIL SHALL BE AWAY (15 METRES OR GREATER) FROM WATERCOURSES, DRAINAGE FEATURES AND TOP OF STEEP SLOPES. THE DOWNSTREAM SIDE OF ALL STOCKPILES SHALL BE PROTECTED WITH SILT FENCE, FIBRE ROLLS OR EQUIVALENT MEASURES PRIOR TO A RAINFALL EVENT.
  - SILT SACKS ARE TO BE PLACED UNDERNEATH THE FRAME AND COVER OF ALL PROPOSED AND EXISTING CATCH BASIN AND OPEN COVER STORM MANHOLES UNTIL CONSTRUCTION IS COMPLETED.
  - HEAVY-DUTY SILT FENCE BARRIERS SHALL BE INSTALLED AS PER OPSD 219.130 WHERE INDICATED AND MAINTAINED AS REQUIRED.
  - DURING ACTIVE CONSTRUCTION PERIODS, VISUAL INSPECTIONS SHALL BE UNDERTAKEN ON A WEEKLY BASIS AND AFTER MAJOR STORM EVENTS (>25mm RAIN IN 24 HOUR PERIOD) ON SEDIMENT CONTROL BARRIERS AND ANY DAMAGE REPAIRED IMMEDIATELY.
  - EROSION AND SEDIMENT CONTROL BARRIERS SHALL ALSO BE ASSESSED (AND REPAIRED AS REQUIRED) FOLLOWING SIGNIFICANT SNOWMELT EVENTS.
  - VISUAL INSPECTIONS SHALL ALSO BE UNDERTAKEN IN ANTICIPATION OF LARGE STORM EVENTS (OR A SERIES OF RAINFALL AND/OR SNOWMELT DAYS) THAT COULD POTENTIALLY YIELD SIGNIFICANT RUNOFF VOLUMES.
  - CARE SHALL BE TAKEN TO PREVENT DAMAGE TO EROSION AND SEDIMENT CONTROLS DURING CONSTRUCTION OPERATIONS.
  - IN SOME CASES, BARRIERS MAY BE REMOVED TEMPORARILY TO ACCOMMODATE THE CONSTRUCTION OPERATIONS. THE AFFECTED BARRIERS SHALL BE REINSTATED IMMEDIATELY AFTER CONSTRUCTION OPERATIONS ARE COMPLETED.
  - SEDIMENT CONTROL DEVICES SHALL BE CLEANED OF ACCUMULATED SEDIMENTATION AS REQUIRED AND REPLACED AS NECESSARY.
  - DURING THE COURSE OF CONSTRUCTION, IF THE ENGINEER BELIEVES THAT ADDITIONAL PREVENTION METHODS ARE REQUIRED TO CONTROL EROSION AND SEDIMENTATION, THE CONTRACTOR SHALL IMPLEMENT ADDITIONAL MEASURES, AS REQUIRED, TO THE SATISFACTION OF THE ENGINEER.
  - CONSTRUCTION AND MAINTENANCE REQUIREMENTS FOR EROSION AND SEDIMENT CONTROLS ARE TO COMPLY WITH OPSD 805.
  - MUD MATS SHALL BE INSTALLED AT ALL CONSTRUCTION ENTRANCES.
  - INSPECTION AND MAINTENANCE OF TEMPORARY EROSION MEASURES SHALL CONTINUE UNTIL THEY ARE NO LONGER REQUIRED.
  - THE CONTRACTOR SHALL ENSURE THAT RECORDS OF INSPECTION ARE TAKEN, INCLUDING INSPECTOR'S NAME, DATE OF INSPECTION, VISUAL OBSERVATIONS, AND ANY NECESSARY REMEDIAL MEASURES TAKEN TO MAINTAIN INTERIM ESC MEASURES.

NOTES  
 THE POSITION OF ALL POLE LINES, CONDUITS, WATERMANS, SEWERS AND OTHER UNDERGROUND AND OVERGROUND UTILITIES AND STRUCTURES IS NOT NECESSARILY SHOWN ON THE CONTRACT DRAWINGS, AND WHERE SHOWN, THE ACCURACY OF THE POSITION OF SUCH UTILITIES AND STRUCTURES IS NOT GUARANTEED. BEFORE STARTING WORK, DETERMINE THE EXACT LOCATION OF ALL SUCH UTILITIES AND STRUCTURES AND ASSUME ALL LIABILITY FOR DAMAGE TO THEM.

GEODETIC SURVEY DERIVED FROM COSINE STATION 0011968U054. LOCATION DESCRIPTION: OLD HIGHWAY 17 BRIDGE OVER CARP RIVER ON CARP-STITTSVILLE ROAD, 0.2 KM SOUTH OF C.N.R. CROSSING IN VILLAGE OF CARP. TABLE IN TOP OF WEST WALL, 30 CM FROM NORTH END, 24 CM FROM WEST EDGE. VERTICAL CONTROL DATA, DATUM: CGVD2878, FIRST ORDER, ELEVATION: 93.861. COORDINATE SYSTEM: MTM ZONE 9; NAD 83 DATUM (CAN83-9)

| NO. | REVISION DESCRIPTION           | DATE     | BY  |
|-----|--------------------------------|----------|-----|
| 3   | REVISED PER CITY/MVCA COMMENTS | 08/04/26 | BLM |
| 2   | REVISED PER CITY COMMENTS      | 12/02/26 | BLM |
| 1   | ISSUED FOR REVIEW              | 21/11/25 | BLM |



**Robinson**  
 Land Development

2936 Baseline Road,  
 Suite 200, Ottawa, ON  
 K2H 1B3  
 (613) 592-6060 rcli.com

| DESIGN   | BLM |
|----------|-----|
| CHECKED  | SG  |
| DRAWN    | BLM |
| CHECKED  | SG  |
| APPROVED | BLM |

**INVERNESS HOMES**  
 38 AURIGA DRIVE, SUITE 200  
 OTTAWA, ON K2E 8A6

**391 HILVERSUM LANE**  
 CARP, ON

**NOT FOR CONSTRUCTION**

**EROSION AND SEDIMENT CONTROL PLAN**

| PROJECT No.  | 25094                |
|--------------|----------------------|
| SURVEY DATED | ROBINSON CONSULTANTS |
| DWG. No.     | APRIL 2026           |
|              | 25094-ESC1           |