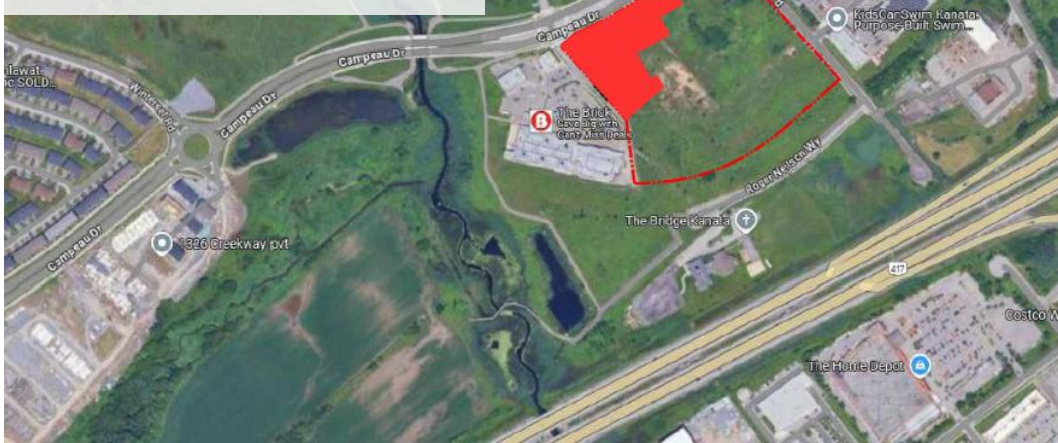


LEGAL DESCRIPTION:
BLOCK 1
REGISTERED PLAN 4M-1540
CITY OF OTTAWA



KEY PLAN: NTS

40-YEAR CANOPY COVER CALCULATION

12,287 m² site area
(15) Small Deciduous Trees Proposed (7m²)
(8) Large Deciduous Trees Proposed (154m²)
(4) Large Coniferous Trees Proposed (79m²)
=1,653m² canopy cover =13.4% canopy cover
* Large deciduous trees calculated at 14m dia., Small deciduous trees calculated at 3m dia.

EXISTING TREE LIST

KEY	QTY	BOTANICAL NAME	COMMON NAME	SIZE	CONDITION	ACTION	OWNERSHIP	COMMENTS
1	1	<i>Acer ginnala</i>	Amur Maple	60mm DBH	DEAD	To remain	City of Ottawa	
2	1	<i>Acer ginnala</i>	Amur Maple	60mm DBH	GOOD	To remain	City of Ottawa	
3	1	<i>Acer ginnala</i>	Amur Maple	60mm DBH	GOOD	To remain	City of Ottawa	
4	1	<i>Acer ginnala</i>	Amur Maple	60mm DBH	GOOD	To remain	City of Ottawa	
5	1	<i>Malus spp.</i>	Crabapple	60mm DBH	DEAD	To remain	City of Ottawa	
6	1	<i>Malus spp.</i>	Crabapple	60mm DBH	DEAD	To be removed	City of Ottawa	
7	1	<i>Malus spp.</i>	Crabapple	60mm DBH	DEAD	To be removed	City of Ottawa	
8	1	<i>Malus spp.</i>	Crabapple	60mm DBH	DEAD	To remain	City of Ottawa	
9	1	<i>Malus spp.</i>	Crabapple	60mm DBH	DEAD	To remain	City of Ottawa	
10	1	<i>Syringa reticulata</i>	Japanese Tree Lilac	60mm DBH	DEAD	To remain	City of Ottawa	
11	1	<i>Syringa reticulata</i>	Japanese Tree Lilac	60mm DBH	GOOD	To remain	City of Ottawa	
12	1	<i>Syringa reticulata</i>	Japanese Tree Lilac	60mm DBH	GOOD	To remain	City of Ottawa	
13	1	<i>Syringa reticulata</i>	Japanese Tree Lilac	60mm DBH	GOOD	To remain	City of Ottawa	
14	1	<i>Syringa reticulata</i>	Japanese Tree Lilac	60mm DBH	GOOD	To remain	City of Ottawa	
15	1	<i>Syringa reticulata</i>	Japanese Tree Lilac	60mm DBH	GOOD	To remain	City of Ottawa	
16	1	<i>Malus spp.</i>	Crabapple	60mm DBH	DEAD	To remain	City of Ottawa	
17	1	<i>Acer negundo</i>	Manitoba Maple	7x100-300mm DBH	GOOD	To be removed	8201 Campeau Drive	
18	1	<i>Acer negundo</i>	Manitoba Maple	250mm DBH	GOOD	To be removed	8201 Campeau Drive	
19	1	<i>Elaeagnus angustifolia</i>	Russian Olive	800mm DBH	GOOD	To be removed	8201 Campeau Drive	
20	1	<i>Populus deltoides</i>	Eastern Cottonwood	300mm DBH	GOOD	To be removed	8201 Campeau Drive	
21	1	<i>Populus deltoides</i>	Eastern Cottonwood	100-150mm DBH	GOOD	To be removed	8201 Campeau Drive	
22	1	<i>Malus spp.</i>	Crabapple	60mm DBH	DEAD	To remain	City of Ottawa	
23	1	<i>Malus spp.</i>	Crabapple	60mm DBH	DEAD	To remain	City of Ottawa	
24	1	<i>Amelanchier canadensis</i>	Serviceberry	60mm DBH	GOOD	To remain	City of Ottawa	

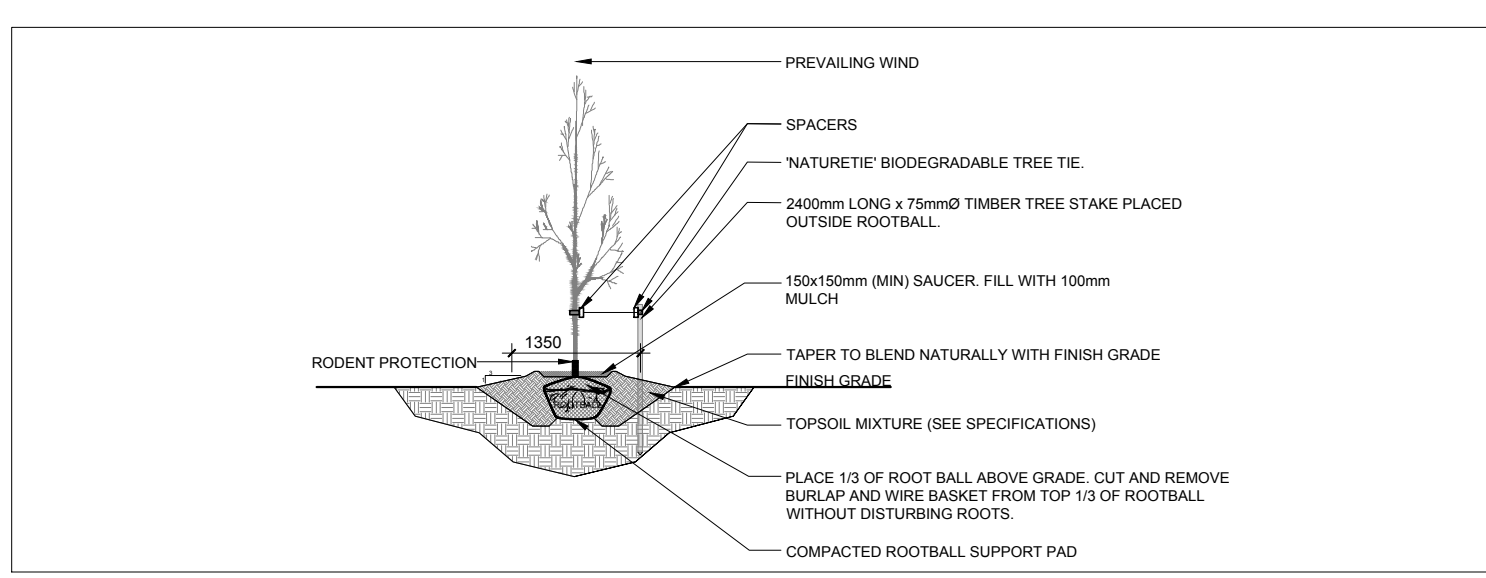
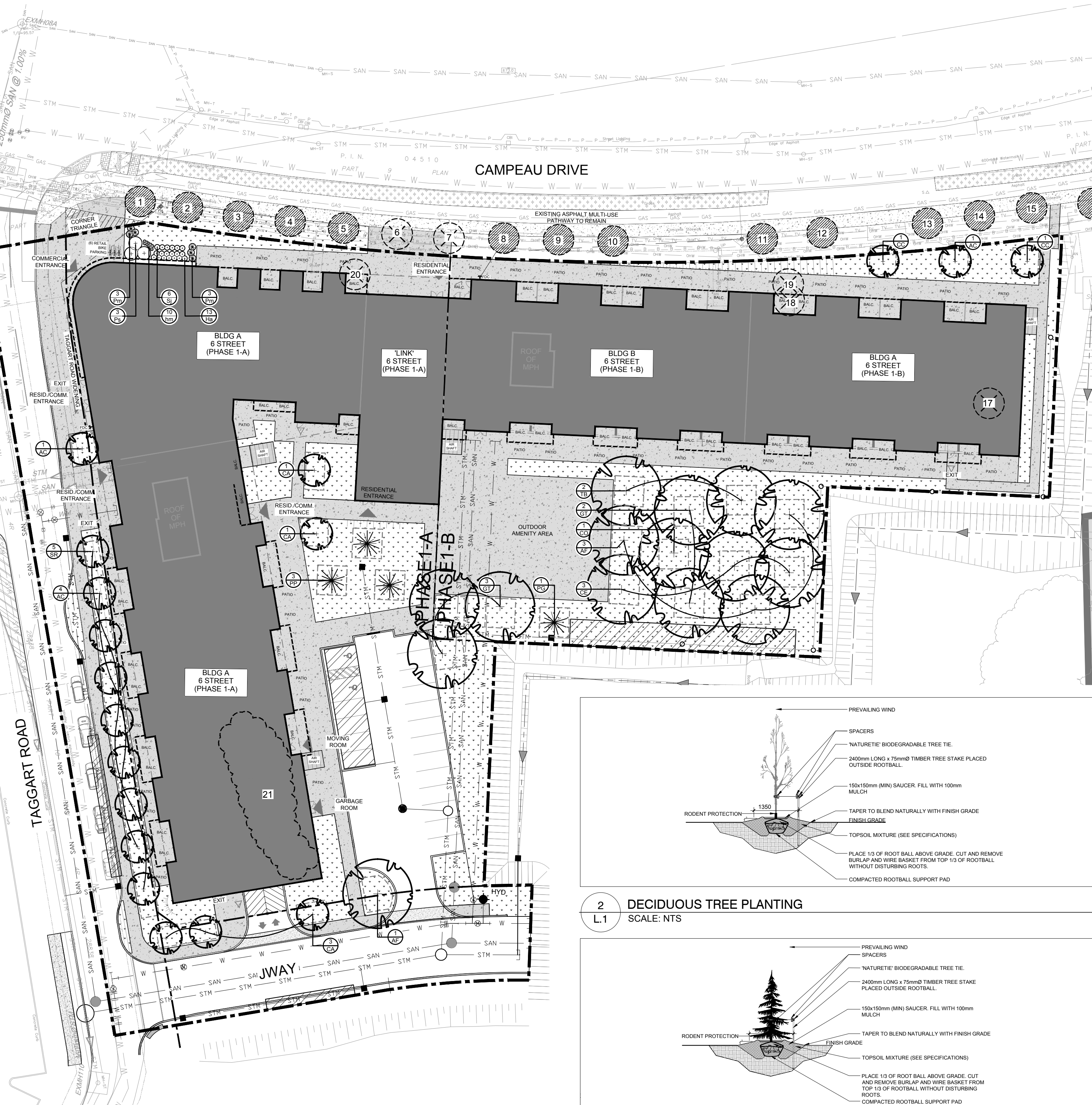
PROPOSED PLANT LIST

KEY	QTY.	BOTANICAL NAME	COMMON NAME	SIZE	CONDITION	REMARKS
* AC	6	<i>Amelanchier canadensis</i>	Serviceberry	50mm cal.	B&B	
* AF	4	<i>Acer x freemanii</i>	Freeman's Maple	50mm cal.	B&B	
* CA	2	<i>Crataegus crus-galli var. inermis</i>	Thornless Cockspur Hawthorn	50mm cal.	B&B	
* CC	2	<i>Cercis canadensis</i>	Eastern Redbud	50mm cal.	B&B	
* CE	3	<i>Celtis occidentalis</i>	Common Hackberry	50mm cal.	B&B	
* CO	1	<i>Carya ovata</i>	Shagbark Hickory	50mm cal.	B&B	
* GT	5	<i>Gleditsia triacanthos var. inermis 'Shademaster'</i>	Shademaster Honeylocust	50mm cal.	B&B	
PG	1	<i>Picea pungens</i>	Colorado Spruce	2000mm ht.	B&B	
SR	5	<i>Syringa reticulata</i>	Japanese Tree Lilac	50mm cal.	B&B	Single Leader
* TB	2	<i>Tilia americana 'Boulevard'</i>	Boulevard Basswood	50mm cal.	B&B	

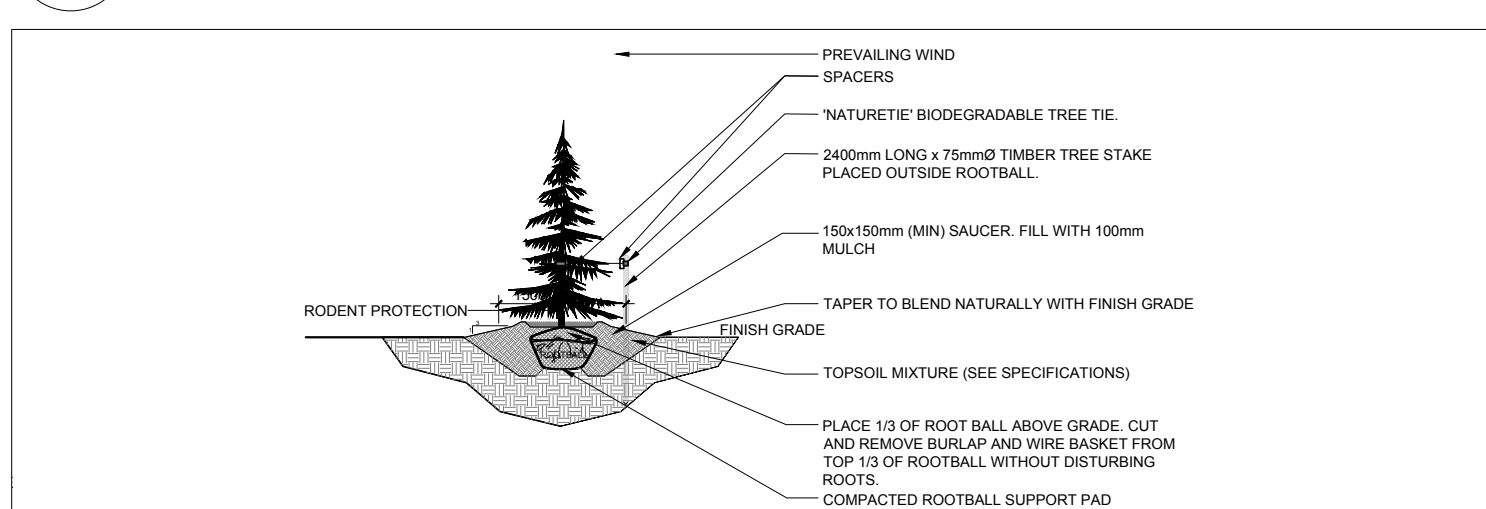
SHRUBS AND PERENNIALS						
Ha	13	<i>Hydrangea arborescens 'Annabelle'</i>	Annabelle Hydrangea	600mm ht.	Potted	800mm o.c.
hm	10	<i>Hemerocallis 'Mini Stella'</i>	Mini Star Daylily	150mm pot	Potted	400mm o.c.
Pm	6	<i>Pinus mugo 'Mughus'</i>	Mugo Pine	600mm spr.	Potted	1200mm o.c.
Ps	3	<i>Philadelphus 'Snowbelle'</i>	Mock Orange	800mm ht.	Potted	2000mm o.c.
Sj	6	<i>Spiraea japonica 'Anthony Waterer'</i>	Anthony Waterer Spirea	600mm ht.	Potted	800mm o.c.

* Denotes Native Species
NOTE: All trees, shrubs, and perennial grasses are proposed on private property.

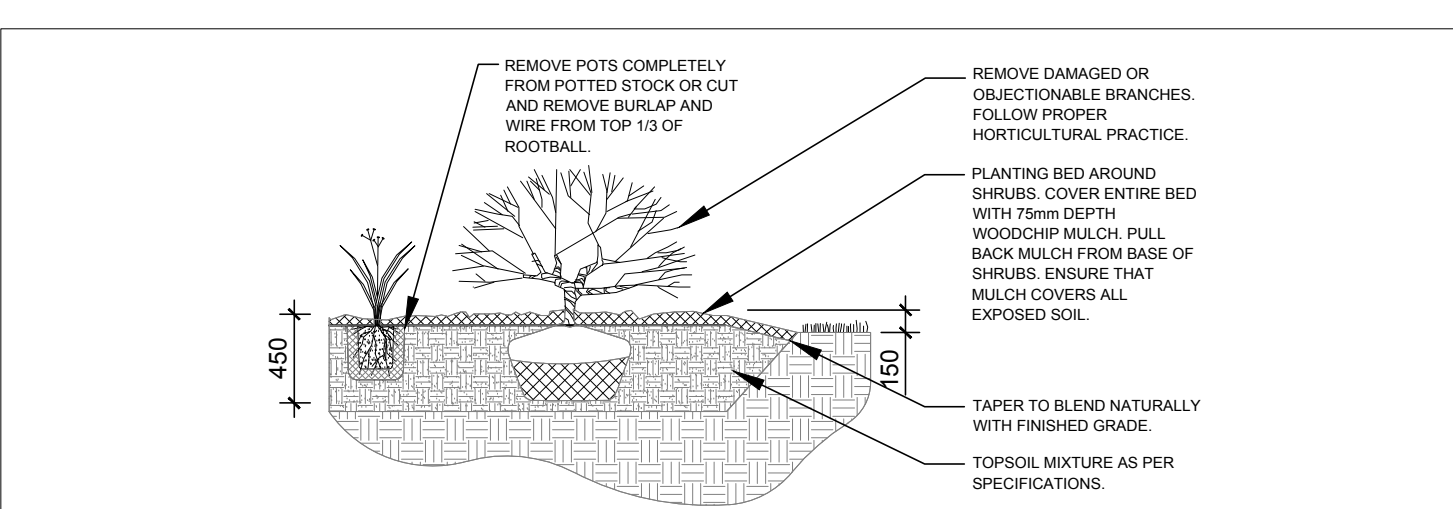
- GENERAL NOTES:**
- It is the responsibility of the appropriate contractor or official to report any errors, omissions or discrepancies on this plan with actual site conditions to the Landscape Architect before proceeding with construction.
 - The contractor is to notify all utility companies and authorities prior to any excavation and ascertain locations of underground services.
 - The contractor is to reinstate all areas and items damaged as a result of construction activity.
 - The contractor is to comply with all pertinent codes and by-laws.
 - The contractor is to maintain a positive surface run-off throughout the entire construction period.
 - The Landscape Architect is not responsible for subsurface conditions.
 - The contractor is to identify all existing trees to remain on site with the Landscape Architect prior to construction.
 - The contractor is to stake the proposed location of all plant material in conjunction with the Landscape Architect prior to excavation.
 - Minimum distances for selected deciduous trees are as follows:
 - Building Foundations 7.5m
 - Sidewalks 1.5m
 - Public Streets 2.5m
 - Underground Infrastructure 2.0m
 - All trees within 1m of underground utility trenches are to be excavated by hand.
 - Remove all protective wrapping from tree trunks after installation.
 - Staking of trees shall only be performed if necessary.
 - Ensure that mulch is pulled back a min. distance of 75mm from base of tree trunk.



2 DECIDUOUS TREE PLANTING
SCALE: NTS



3 CONIFEROUS TREE PLANTING
SCALE: NTS



4 SHRUB/PERENNIAL PLANTING
SCALE: NTS

1 TREE CONSERVATION REPORT AND LANDSCAPE PLAN
SCALE 1:400

CLIENT:

CONSULTANTS
ARCHITECTS:
ARCADIS
55 ST. CLAIR AVENUE WEST, TORONTO
ON M4V 2Y7, CANADA tel 416 596 1930

CIVIL ENGINEERS:
ARCADIS
333 PRESTON STREET SUITE 500, OTTAWA
ON K1S 5N4, CANADA tel 613 721 0555

SURVEYORS:
FARLEY, SMITH AND DENIS SURVEYING LTD.
UNIT 275, 30 COLONNADE ROAD, OTTAWA
ON K2E 7J6, CANADA tel 613 721 8226

LEGEND

- EXISTING TREE TO REMAIN
- EXISTING TREE TO BE REMOVED
- REQUIRED SOIL VOLUME AT A 1.5m DEPTH PROPOSED DECIDUOUS TREE
- REQUIRED SOIL VOLUME AT A 1.5m DEPTH PROPOSED CONIFEROUS TREE
- EXISTING SHRUBS TO BE REMOVED
- PROPOSED SHRUBS / PERENNIALS
- EXISTING GRASS
- PROPOSED SOD
- EXISTING SIDEWALK
- PROPOSED CONCRETE
- BUILDING OVERHANG
- UNDERGROUND PARKING LIMIT
- PROPERTY LINE

10	ISSUED FOR SITE PLAN RESUBMISSION	03/25/2026	WF	JL
9	REVISED AS PER UPDATED SITE PLAN	01/30/2026	WF	JL
8	REVISED AS PER UPDATED SITE PLAN	10/02/2025	WF	JL
7	TREE PLANTING REVISED	07/23/2025	CAT	JL
6	REVISED AS PER COMMENTS	07/23/2025	CAT	JL
5	ISSUED FOR SITE PLAN CONTROL	07/22/2025	CAT	JL
4	REVISED AS PER UPDATED SITE PLAN	07/18/2025	CAT	JL
3	GRADING AND SERVICES UPDATED	07/17/2025	WF	JL
2	REVISED AS PER NEW SITE PLAN	06/11/2025	CAT	JL
1	ISSUED FOR REVIEW AND DISCUSSION	05/30/2025	CAT	JL

JAMES B. LENNOX & ASSOCIATES INC.
LANDSCAPE ARCHITECTS
3332 CARLING AVE. OTTAWA, ONTARIO K2H 5A8
Tel. (613) 722-5168 Fax. (866) 343-3942

PROJECT
CAMPEAU AND DIDSBURY
8201 Campeau Drive / 303 Didsbury Road Phase 1

DRAWING
TREE CONSERVATION REPORT AND LANDSCAPE PLAN

STAMP

SCALE	AS SHOWN
START DATE	APRIL 2025
PROJECT NO.	25MIS2531

PROJECT NORTH

DRAWING NO.	L.1
PLOT SIZE ARCH-D	

D07-12-25-0103