

Copyright Reserved

The Contractor shall verify and be responsible for all dimensions. DO NOT scale the drawing - any errors or omissions shall be reported to Stantec without delay.
The Copyrights to all designs and drawings are the property of Stantec. Reproduction or use for any purpose other than that authorized by Stantec is forbidden.

Legend

- AREA ID
- RUNOFF COEFFICIENT
- STORM DRAINAGE AREA No.
- STORM DRAINAGE BOUNDARY
- MAXIMUM STATIC PONDING LIMITS
- DIRECTION OF OVERLAND FLOW
- PROPOSED STORM SEWER
- PROPOSED CATCHBASIN
- INLET CONTROL DEVICE (SEE ICD TABLE ON THIS PLAN)
- EXISTING STORM SEWER
- EXISTING CATCHBASIN
- THERMAL INSULATION ON STORM SEWER WHERE COVER IS LESS THAN 1.5m. THERMAL INSULATION ON WATERMAIN WHERE COVER IS LESS THAN 2.4m AS PER W22.

Notes

SCHEDULE OF INLET CONTROL DEVICES				
Structure ID	ICD Type	ICD Size	100yr Flow (L/s)	100yr Head (m)
202A	IPEX Tempest HF	127mm	36.9	1.39
202B	IPEX Tempest HF	102mm	25.0	1.51
225AA	IPEX LMF 90	-	13.9	3.16

APPROVED
By wildmange at 4:47 pm, Mar 13, 2026

G. Wildman
GERALDINE WILDMAN
MANAGER, DEVELOPMENT REVIEW SOUTH
PLANNING, DEVELOPMENT AND BUILDING SERVICES
DEPARTMENT, CITY OF OTTAWA

Revision	Description	By	Appd.	YY.MM.DD
4	REVISED PER CITY COMMENTS	JP	SG/DT	26.01.09
3	ADDED WATERMAIN 'E' TABLE	JP	SG	25.11.21
2	CLARIFIED GREENBANK ELEVATIONS; REVISED MINOR IE IN GRADES	JP	SG	25.11.07
1	2ND SUBMISSION FOR SITE PLAN APPROVAL	JP	SG	25.09.05
0	1ST SUBMISSION FOR SITE PLAN APPROVAL	JP	SG	25.05.13

File Name:	JP	SG	JP	25.04.17
160402143-HMB5-PH7-DB	Dwn.	Chkd.	Dgn.	YY.MM.DD

Permit-Seal

Client/Project

Mattamy Homes

HMB PHASE 7

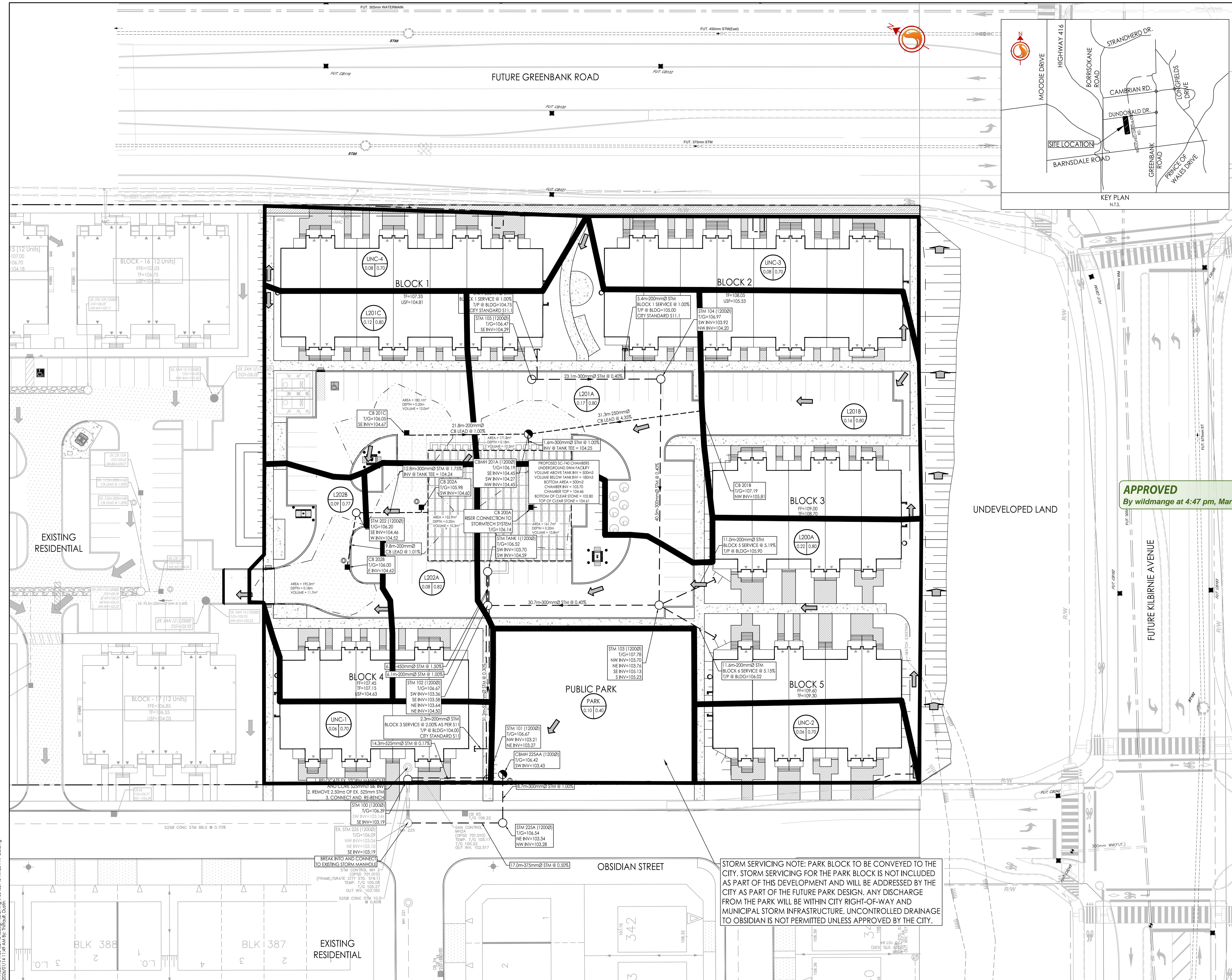
OTTAWA, ON

Title

STORM DRAINAGE PLAN

Project No.	Scale	Sheet	Revision
160402143	1:300	8 of 9	4

Drawing No. SD-1



STORM SERVICING NOTE: PARK BLOCK TO BE CONVEYED TO THE CITY. STORM SERVICING FOR THE PARK BLOCK IS NOT INCLUDED AS PART OF THIS DEVELOPMENT AND WILL BE ADDRESSED BY THE CITY AS PART OF THE FUTURE PARK DESIGN. ANY DISCHARGE FROM THE PARK WILL BE WITHIN CITY RIGHT-OF-WAY AND MUNICIPAL STORM INFRASTRUCTURE. UNCONTROLLED DRAINAGE TO OBSIDIAN IS NOT PERMITTED UNLESS APPROVED BY THE CITY.

W:\projects\160402143\design\drawing\160402143-HMB5-PH7-DB.dwg
 2026/01/14 1:49 AM by: m.fidell, Dcm
 ORIGINAL SHEET - ARCH D

D07-12-25-0068