

Copyright Reserved

The Contractor shall verify and be responsible for all dimensions. DO NOT scale the drawing - any errors or omissions shall be reported to Stantec without delay.  
The Copyrights to all designs and drawings are the property of Stantec. Reproduction or use for any purpose other than that authorized by Stantec is forbidden.

Legend

■■■■■■ PROPOSED SILT FENCE BOUNDARY AS PER OPSD 219.110

⊠ PROPOSED MUD MAT LOCATION

⊗ PROPOSED CATCH BASIN PROTECTION

Notes

Best Management Practices

CONTRACTOR TO PROVIDE EROSION AND SEDIMENT CONTROLS (BEST MANAGEMENT PRACTICES) DURING CONSTRUCTION OF THIS PROJECT.

EROSION MUST BE MINIMIZED AND SEDIMENTS MUST BE REMOVED FROM CONSTRUCTION SITE RUN-OFF IN ORDER TO PROTECT DOWNSTREAM AREAS. DURING ALL CONSTRUCTION, EROSION AND SEDIMENTATION SHOULD BE CONTROLLED BY THE FOLLOWING TECHNIQUES:

- LIMIT THE EXTENT OF EXPOSED SOILS AT ANY GIVEN TIME.
- REVEGETATE EXPOSED AREAS AND SLOPES AS SOON AS POSSIBLE.
- MINIMIZE AREA TO BE CLEARED AND GRUBBED.
- PROTECT EXPOSED SLOPES WITH PLASTIC OR SYNTHETIC MULCHES.
- INSTALL CATCH BASIN INSERTS OR EQUIVALENT IN ALL PROPOSED CATCH BASINS AND CATCH BASIN MANHOLES AND IN ALL EXISTING CATCH BASINS THAT WILL RECEIVE RUN-OFF FROM THE SITE.
- A SILT FENCE SHALL BE INSTALLED ALONG THE PERIMETER OF ALL AND ANY STOCKPILES OF MATERIAL TO BE USED OR REMOVED FROM SITE. (LOCATION TO BE DETERMINED)
- A VISUAL INSPECTION SHALL BE DONE DAILY ON SEDIMENT CONTROL MEASURES AND CLEANED OF ANY ACCUMULATED SILT AS REQUIRED. THE DEPOSITS WILL BE DISPOSED OFF SITE AS PER THE REQUIREMENTS OF THE CONTRACT.
- SEDIMENT CONTROL BARRIERS MAY ONLY BE REMOVED TEMPORARILY WITH APPROVAL OF CONTRACT ADMINISTRATOR TO ACCOMMODATE CONSTRUCTION OPERATIONS. ALL AFFECTED BARRIERS MUST BE REINSTATED AT NIGHT WHEN CONSTRUCTION IS COMPLETED. NO REMOVAL WILL OCCUR IF THERE IS A SIGNIFICANT RAINFALL EVENT ANTICIPATED (>10mm) UNLESS A NEW DEVICE HAS BEEN INSTALLED TO PROTECT EXISTING STORM AND SANITARY SEWER SYSTEMS, OR DOWNSTREAM WATERCOURSES.
- NO REFUELING OR CLEANING OF EQUIPMENT IS PERMITTED NEAR ANY EXISTING WATERWAY.
- CONTRACTOR SHALL REMOVE SEDIMENT CONTROL MEASURES WHEN, IN THE OPINION OF THE CONTRACT ADMINISTRATOR, THE MEASURES IS NO LONGER REQUIRED. NO CONTROL MEASURES SHALL BE PERMANENTLY REMOVED WITHOUT PRIOR WRITTEN AUTHORIZATION FROM THE CONTRACT ADMINISTRATOR.
- THE CONTRACTOR SHALL PERIODICALLY, OR WHEN REQUESTED BY THE CONTRACT ADMINISTRATOR, CLEAN OUT ACCUMULATED SEDIMENTS AS REQUIRED.
- THE CONTRACTOR SHALL IMMEDIATELY REPORT TO THE ENGINEER ANY ACCIDENTAL DISCHARGES OF SEDIMENT MATERIAL INTO THE WATERCOURSE. APPROPRIATE RESPONSE MEASURES, INCLUDING ANY REPAIRS TO EXISTING CONTROL MEASURES OR THE IMPLEMENTATION OF ADDITIONAL CONTROL MEASURES, SHALL BE CARRIED OUT BY THE CONTRACTOR WITHOUT DELAY.
- CONTRACTOR SHALL INSTALL MUD MATS AT ALL ENTRANCES TO THE SITE.

Revision	By	Appd.	YY.MM.DD
4	REVISED PER CITY COMMENTS	JP	SG/DT 26.01.09
3	ADDED WATERMAIN ETABLE	JP	SG 25.11.21
2	CLEARRED GREENBANK ELEVATIONS; REVISED MHO IN GRADES	JP	SG 25.11.07
1	2ND SUBMISSION FOR SITE PLAN APPROVAL	JP	SG 25.09.05
0	1ST SUBMISSION FOR SITE PLAN APPROVAL	JP	SG 25.05.13

Revision	By	Appd.	YY.MM.DD
4	REVISED PER CITY COMMENTS	JP	SG/DT 26.01.09
3	ADDED WATERMAIN ETABLE	JP	SG 25.11.21
2	CLEARRED GREENBANK ELEVATIONS; REVISED MHO IN GRADES	JP	SG 25.11.07
1	2ND SUBMISSION FOR SITE PLAN APPROVAL	JP	SG 25.09.05
0	1ST SUBMISSION FOR SITE PLAN APPROVAL	JP	SG 25.05.13

File Name:	JP	SG	JP	25.04.17
160402143-HMB5-PH7-D8	Dwn.	Chkd.	Dgn.	YY.MM.DD

Permit-Seal

Client/Project  
Mattamy Homes

HMB PHASE 7

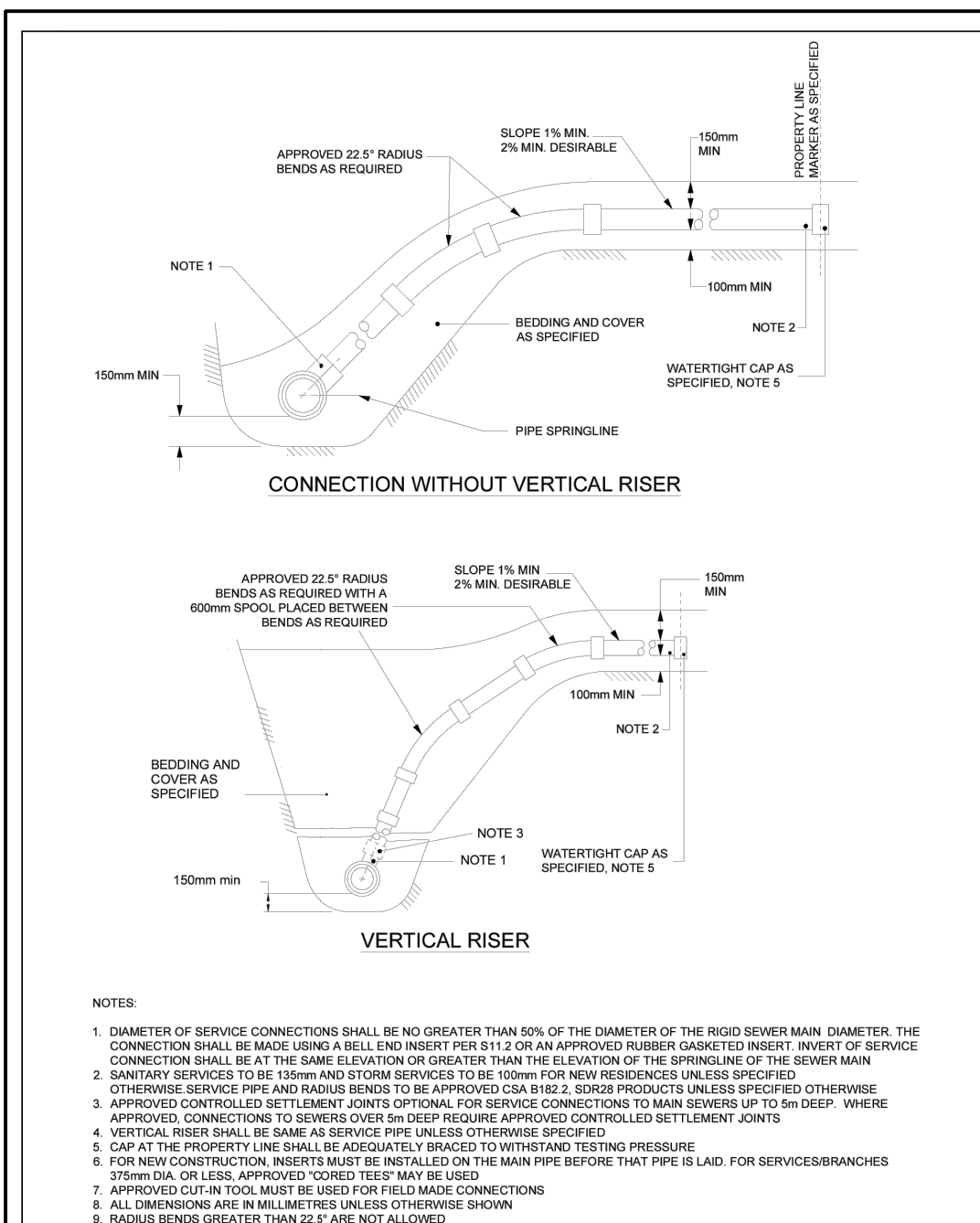
OTTAWA, ON  
Title  
EROSION CONTROL PLAN AND DETAIL SHEET

Project No. 160402143  
Scale 0 5 15 25m  
1:500  
Drawing No. Sheet Revision

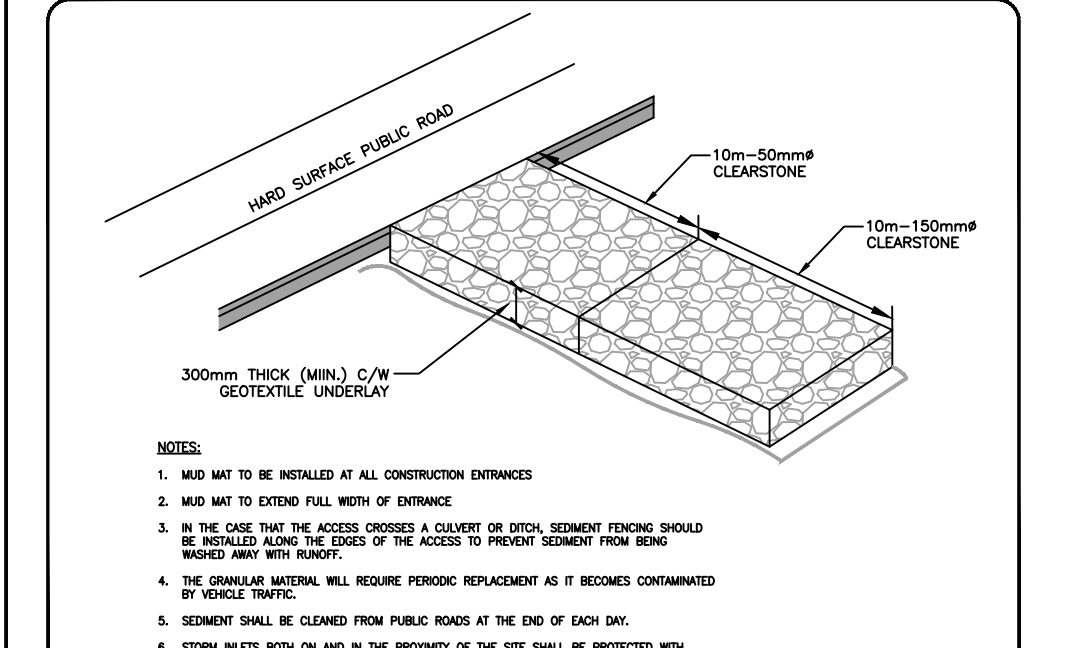
EC/DS-1 6 of 9 4  
PLAN # 19017

*G. Wildman*  
**GERALDINE WILDMAN**  
MANAGER, DEVELOPMENT REVIEW SOUTH  
PLANNING, DEVELOPMENT AND BUILDING SERVICES  
DEPARTMENT, CITY OF OTTAWA

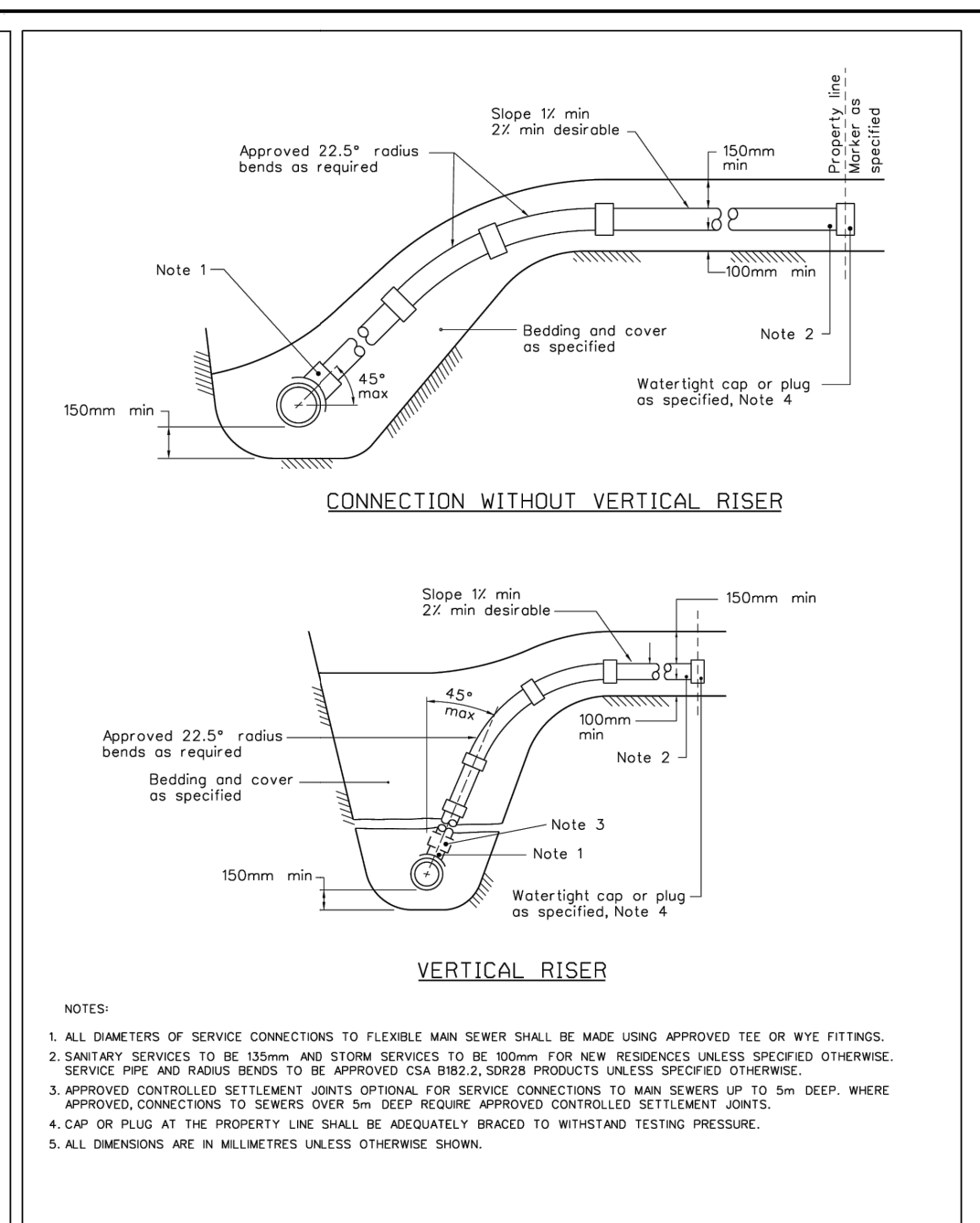
**APPROVED**  
By wildmange at 4:41 pm, Mar 13, 2026



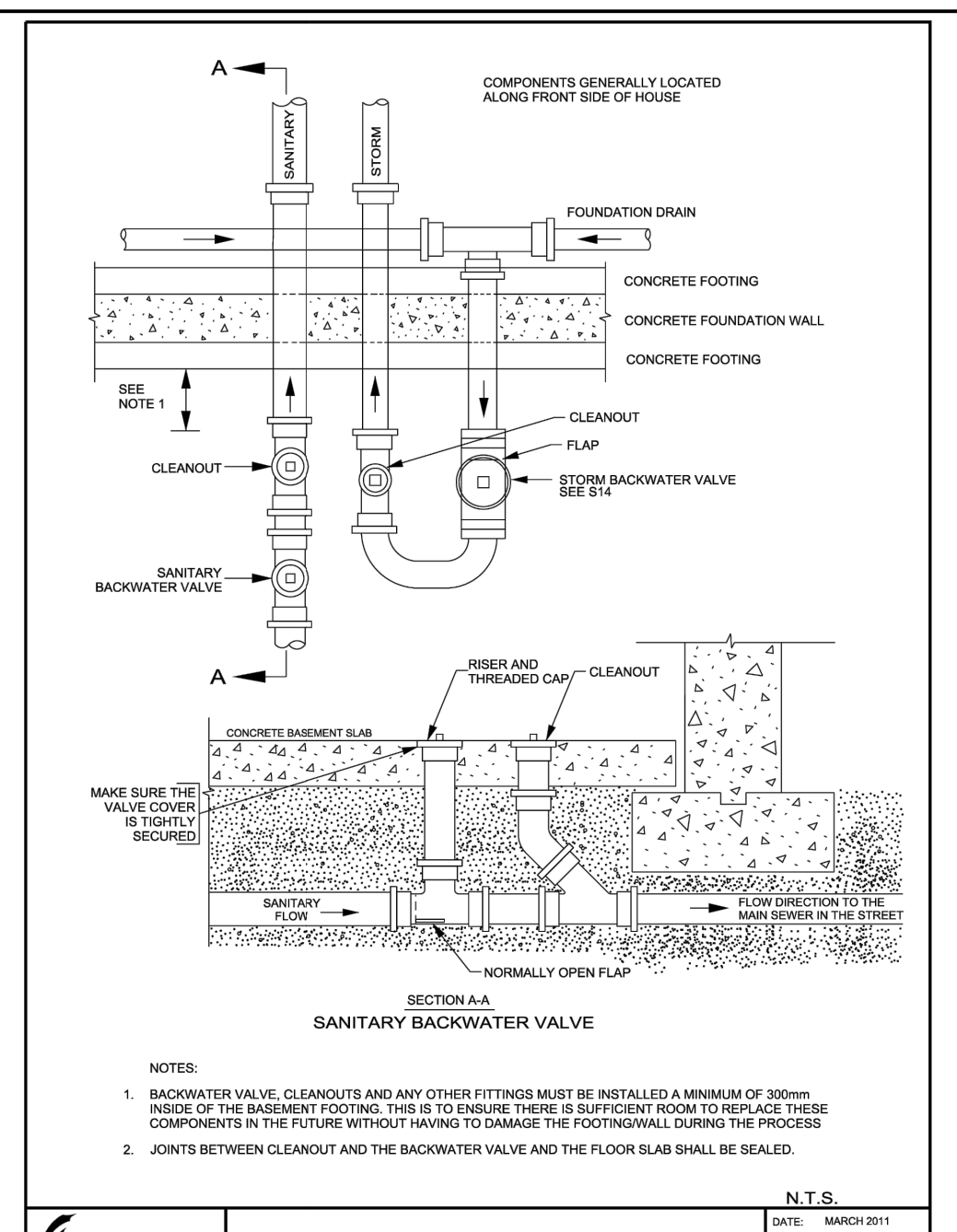
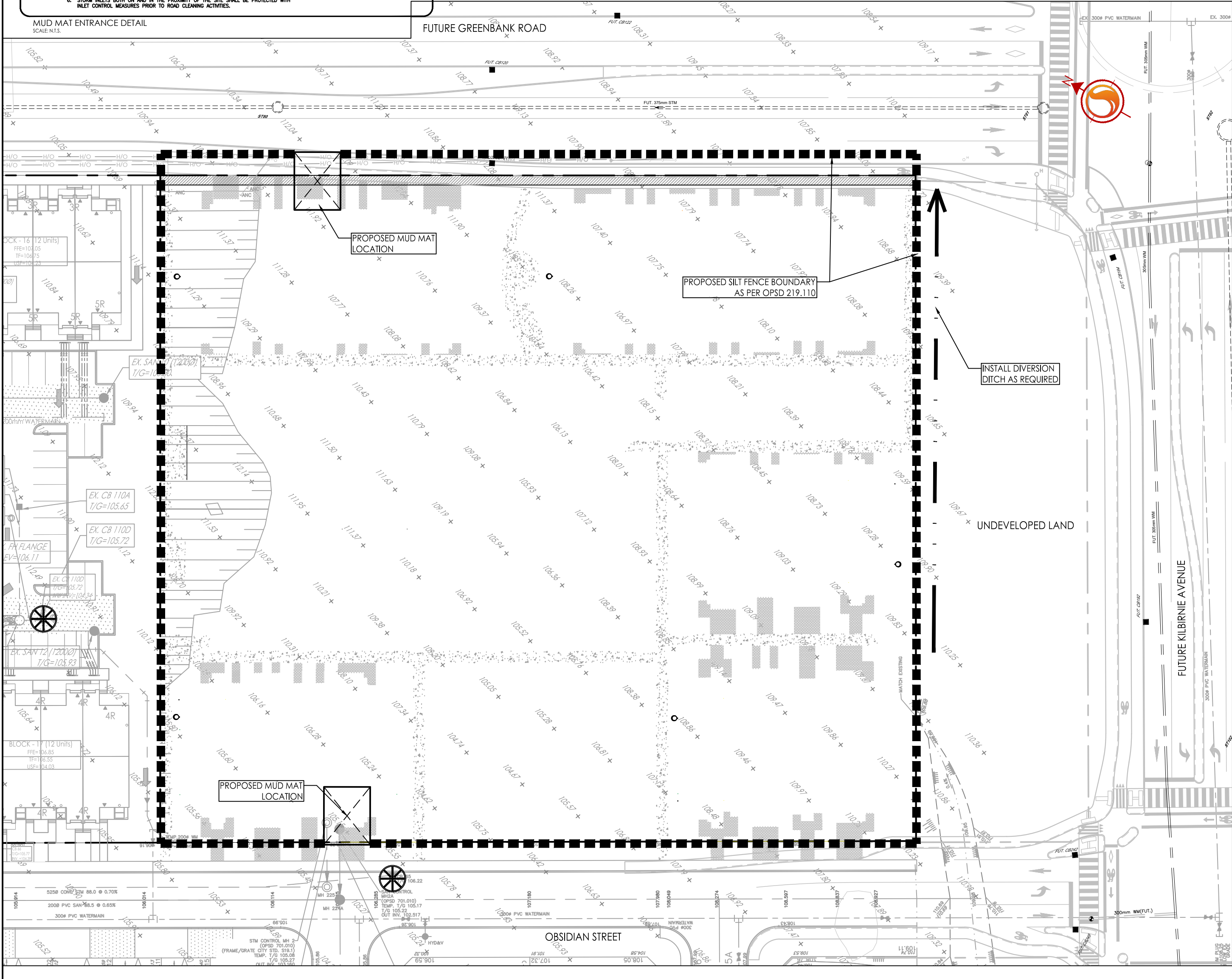
**Ottawa** TITLE: SEWER SERVICE CONNECTIONS FOR RIGID MAIN SEWER PIPE (MODIFIED OPSD-1006.010) DATE: MAR 2006 REV: MAR 2024 DWG No: S11



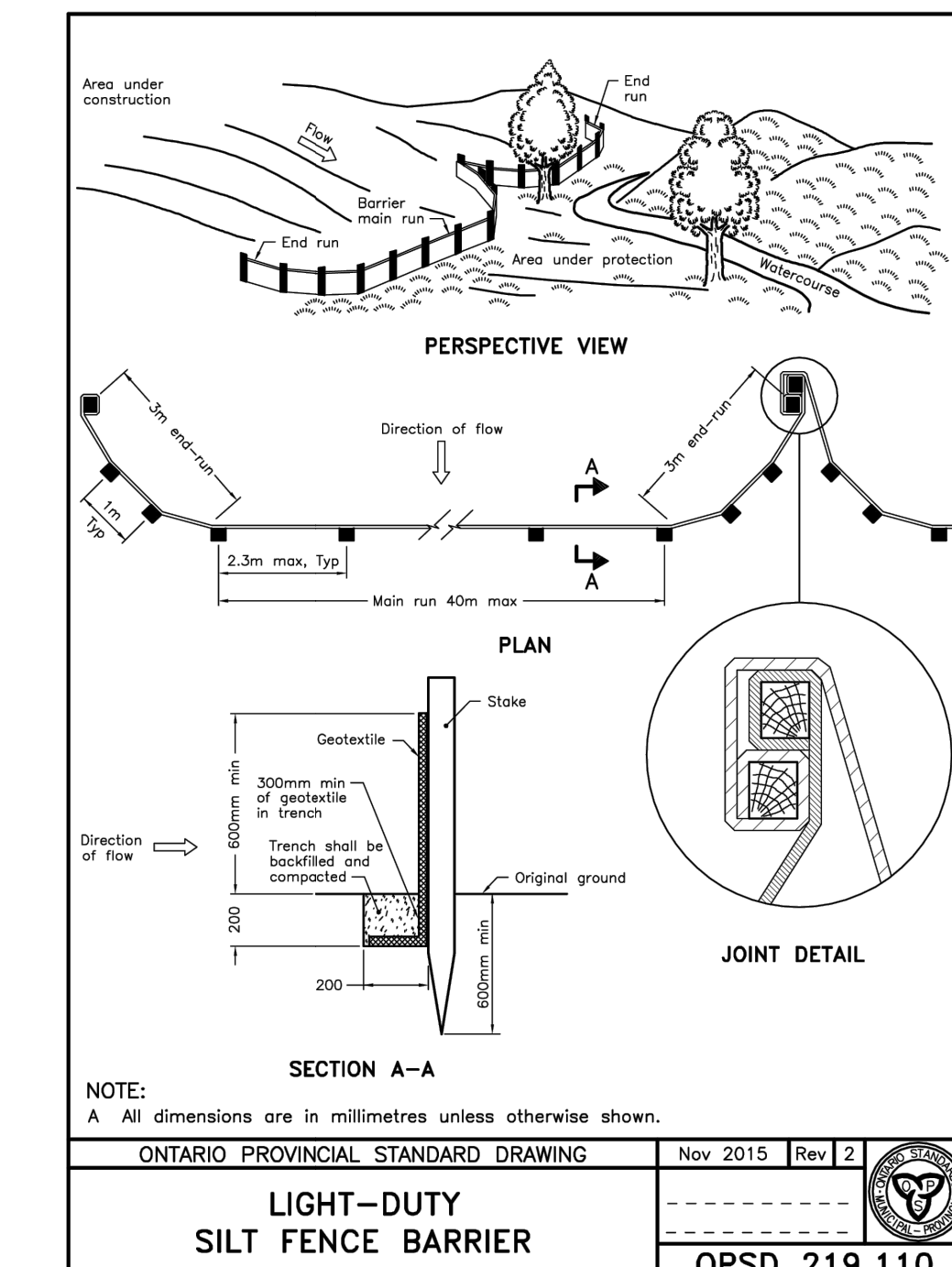
**Ottawa** TITLE: SEWER SERVICE CONNECTIONS FOR FLEXIBLE MAIN SEWER PIPE (MODIFIED OPSD-1006.020) DATE: MARCH 2006 REV: MARCH 2013 DWG No: S11.1



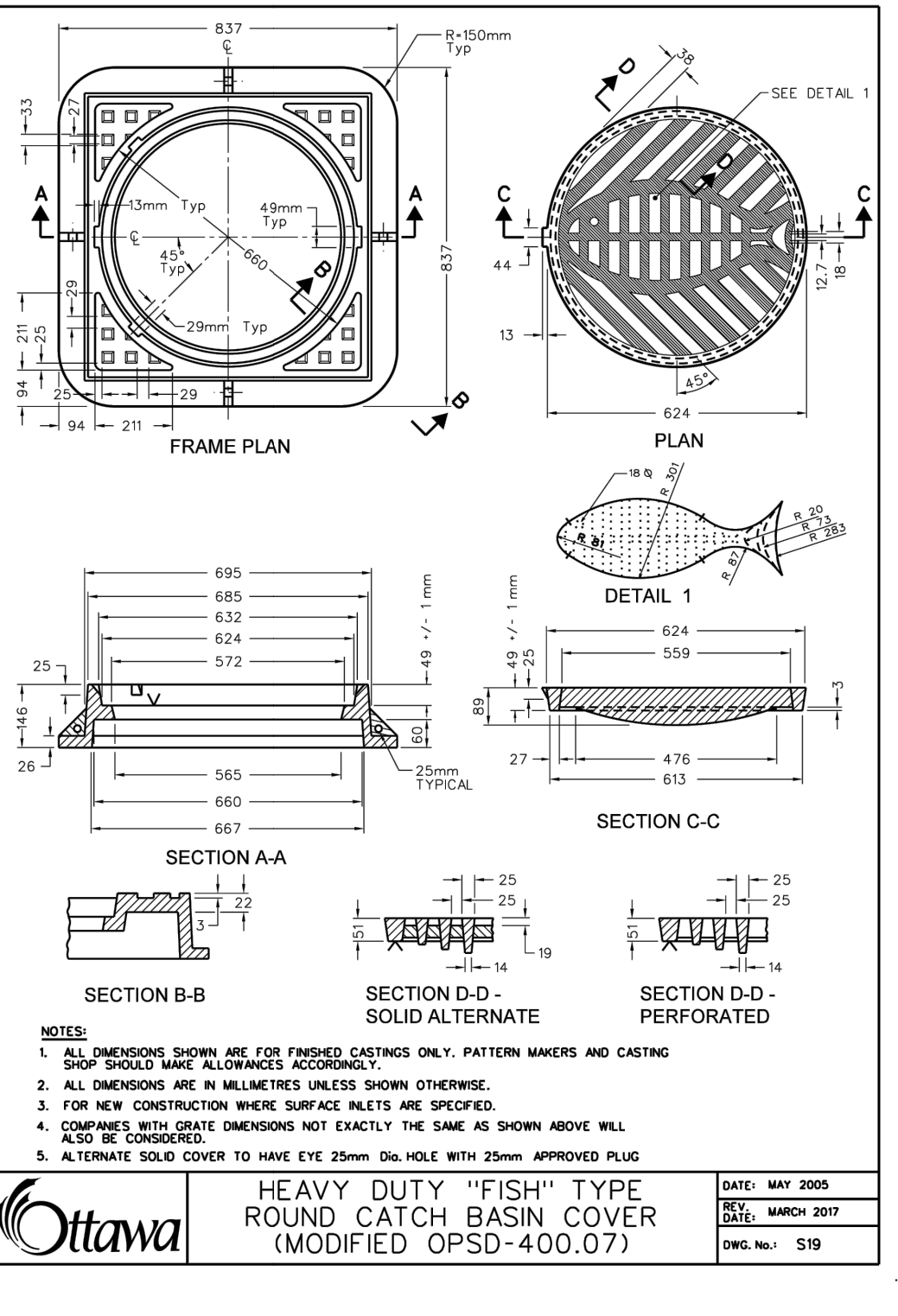
**Ottawa** TITLE: SEWER SERVICE CONNECTIONS FOR FLEXIBLE MAIN SEWER PIPE (MODIFIED OPSD-1006.020) DATE: MARCH 2006 REV: MARCH 2013 DWG No: S11.1



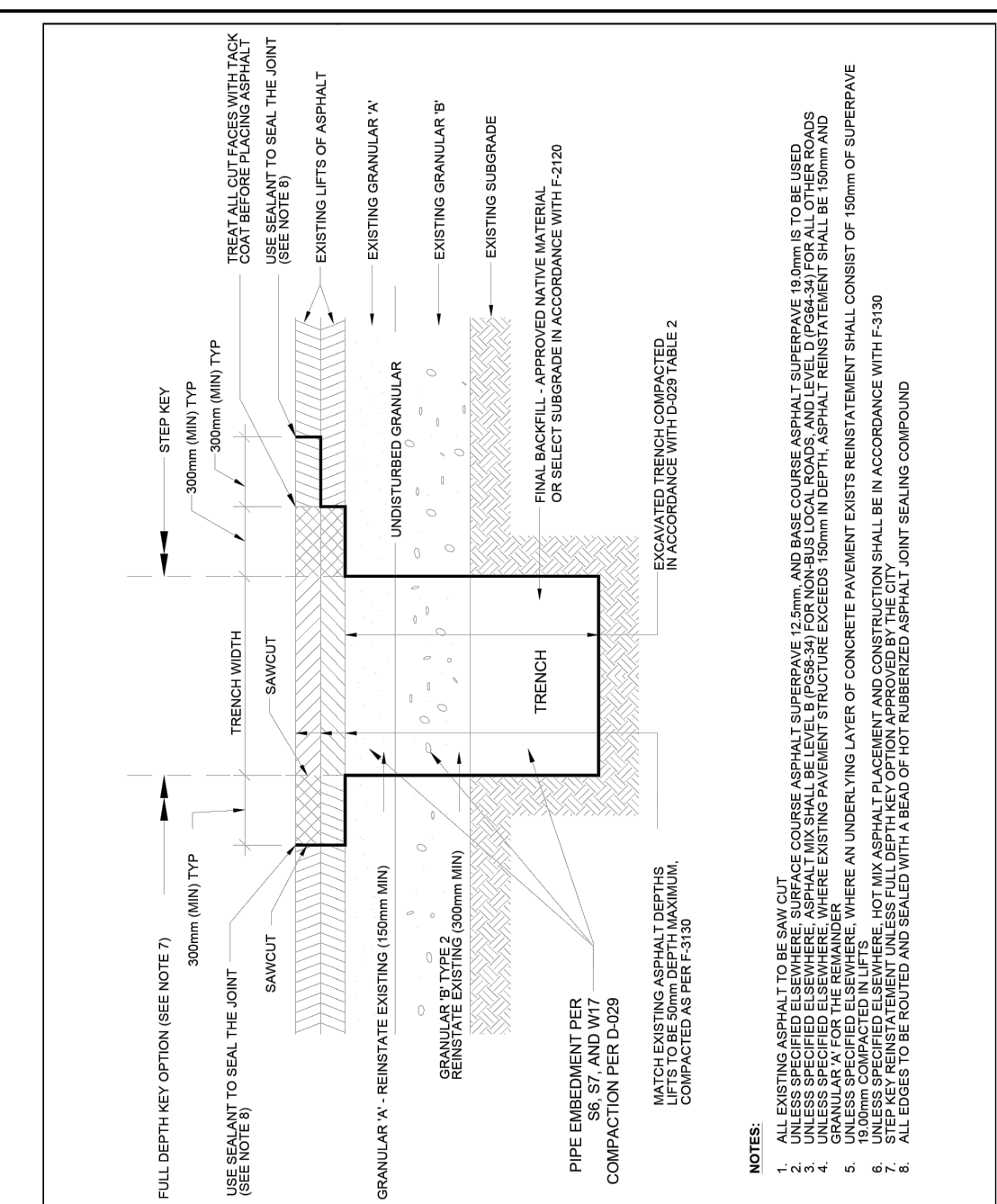
**Ottawa** TITLE: SANITARY BACKWATER VALVE INSTALLATION TYPE 2 DATE: MARCH 2011 REV: DATE DWG No: S14.2



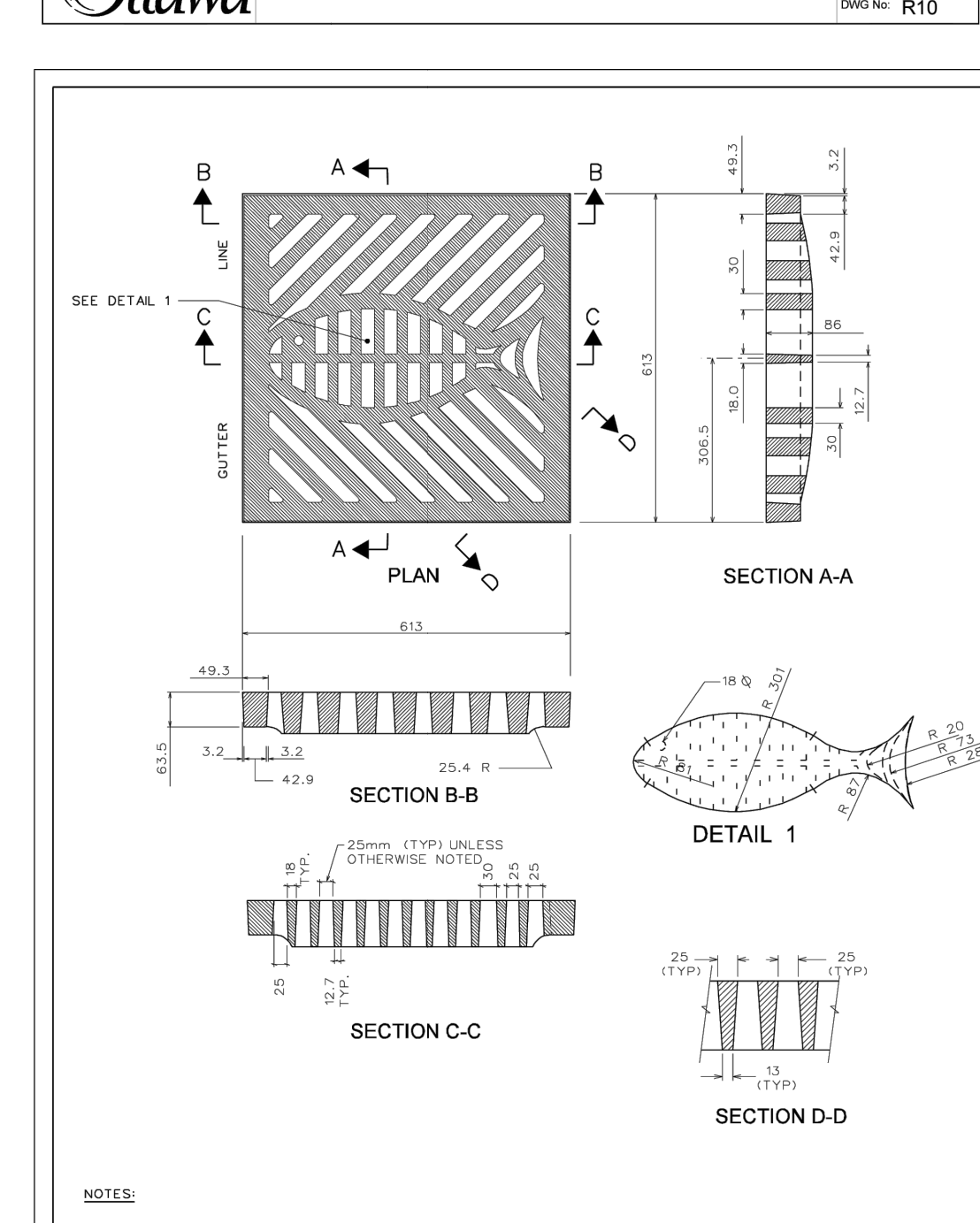
**Ottawa** TITLE: LIGHT-DUTY SILT FENCE BARRIER DATE: NOV 2015 REV: 2 DWG No: OPSD 219.110



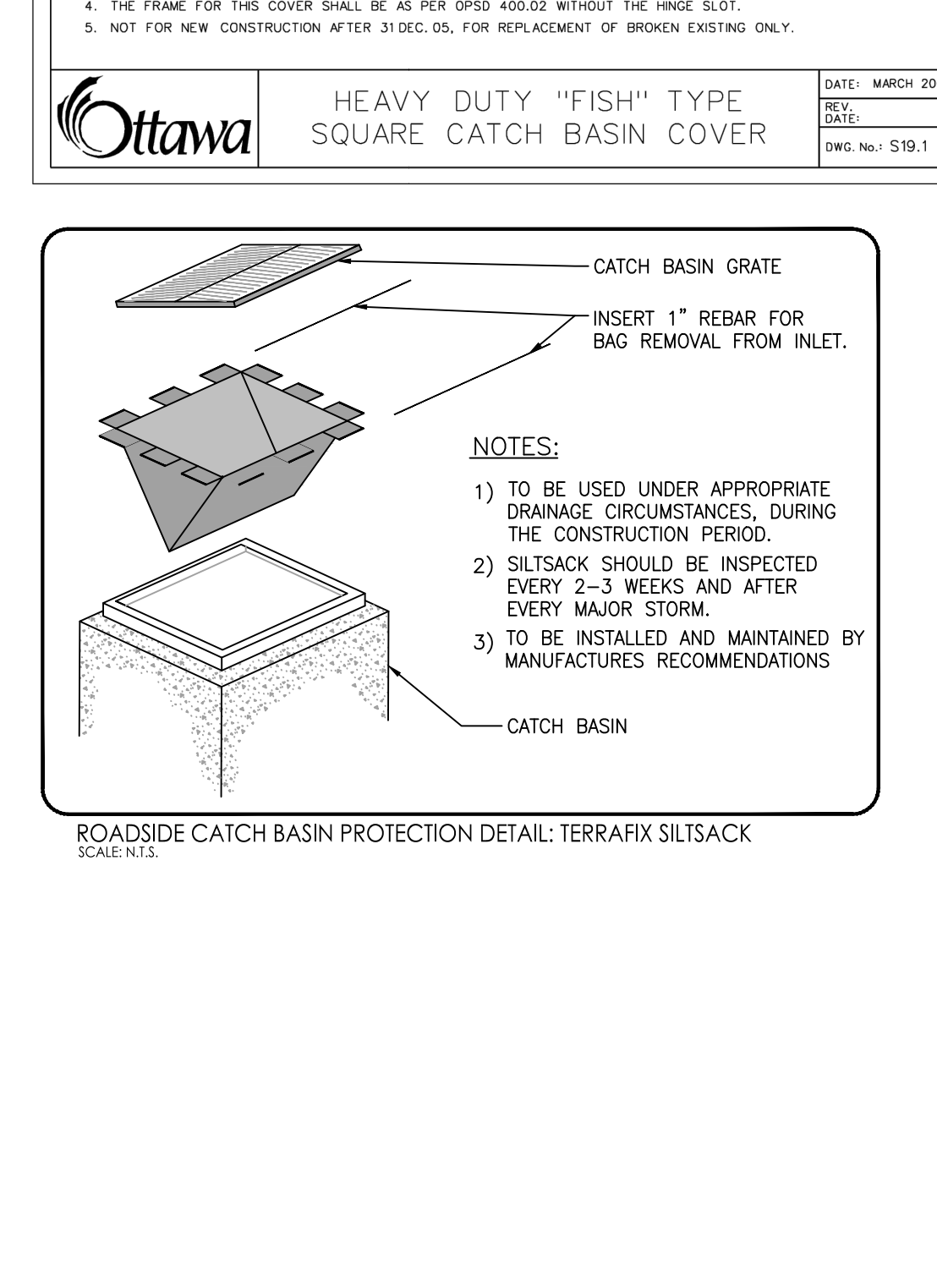
**Ottawa** TITLE: HEAVY DUTY "FISH" TYPE ROUND CATCH BASIN COVER (MODIFIED OPSD-400.07) DATE: MAY 2005 REV: MARCH 2017 DWG No: S19



**Ottawa** TITLE: STANDARD TRENCH REINSTATEMENT IN PAVED SURFACE DATE: MAY 2001 REV: MAR 2023 DWG No: R10



**Ottawa** TITLE: HEAVY DUTY "FISH" TYPE SQUARE CATCH BASIN COVER DATE: MARCH 2005 REV: DATE DWG No: S19.1



**Ottawa** TITLE: ROADSIDE CATCH BASIN PROTECTION DETAIL: TERRAFIX SILTSACK SCALE: N.T.S.