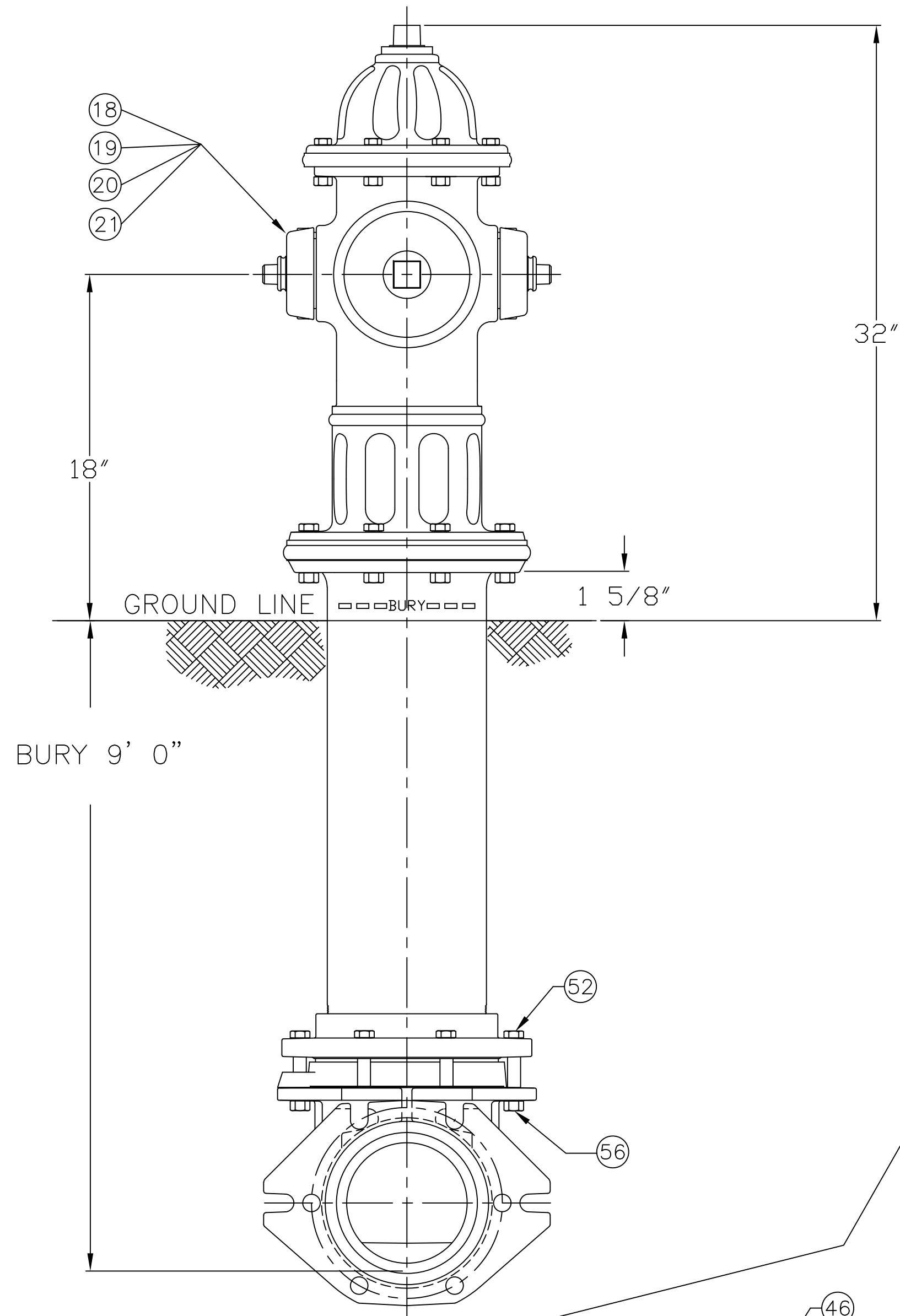


5-1/4" A423 SUPER CENTURION "250" W/ TWO HOSE NOZZLES & ONE PUMPER NOZZLE - 250 P.S.I. W.P. - 500 P.S.I. TEST, 1997 STYLE.



PARTS LIST				
ITEM	DESCRIPTION	REQ'D	MATERIAL	A.S.T.M.
1	OPERATING NUT	1	BRONZE	B-62 C83600
2	WIPER RING	1	RUBBER	D-2000 EPDM
3	HOLD DOWN NUT O-RING	1	RUBBER	D-2000 BUNA N
4	HOLD DOWN NUT	1	BRONZE	B-62 C83600
5	BONNET O-RING	1	RUBBER	D-2000 BUNA N
6	ANTI-FRICTION WASHER	1	CELCON	GRADE M90-04
7	GREASE FITTING W/CAP	1	STAINLESS STEEL	303
8	BONNET	1	CAST IRON	A-126 CLASS B
9	HEX BOLT	8	STEEL	A-307/A429 ELECTROGALV. GR. B
10	TOP UPPER BARREL O-RING	1	RUBBER	D-2000 BUNA N
11	UPPER STEM	1	STAINLESS STEEL	17-4
12	STEM O-RING	1	RUBBER	D-2000 BUNA N
13	NOZZLE LOCK	3	STAINLESS STEEL	A-276 305 OR 410
14	PUMPER NOZZLE	1	BRONZE	B-584 C89833
15	PUMPER NOZZLE CAP GASKET	1	RUBBER	D-2000 NEOPRENE
16	PUMPER NOZZLE O-RING	1	RUBBER	D-2000 BUNA N
17	PUMPER NOZZLE CAP	1	CAST IRON	A-126 CLASS B
18	HOSE NOZZLE	2	BRONZE	B-584 C89833
19	HOSE NOZZLE CAP GASKET	2	RUBBER	D-2000 NEOPRENE
20	HOSE NOZZLE O-RING	2	RUBBER	D-2000 BUNA N
21	HOSE NOZZLE CAP	2	CAST IRON	A-126 CLASS B

ITEM	DESCRIPTION	REQ'D	MATERIAL	A.S.T.M.
22				
23	CHAIN HOOK	1	STEEL	ELECTROGALV
24	UPPER BARREL	1	CAST IRON	A-126 CLASS B
25	TRAFFIC STEM COUPLING	1	STAINLESS STEEL	A-890 1.5% SILICON MAX.
26	TRAFFIC FLANGE BOLT	8	STEEL	A-307/A429 ELECTROGALV. GR. B
27	TRAFFIC FLANGE O-RING	1	RUBBER	D-2000 BUNA N
28	TRAFFIC FLANGE	1	CAST IRON	A-126 CLASS B
29	REUSABLE COTTER PIN	2	STAINLESS STEEL	18-8
30	CLEVIS PIN	2	STAINLESS STEEL	A-276 300 SERIES
31	LOWER STEM	1	STAINLESS STEEL	17-4
32	LOWER BARREL	1	DUCTILE IRON	A536 65-45-12
33	STEM PIN	1	STAINLESS STEEL	A-276 300 SERIES
34	DRAIN VALVE FACING	2	H.D. POLYETHYLENE	LS 5660-00
35	DRAIN VALVE FACING SCREW	4	STAINLESS STEEL	A-276 300 SERIES
36	UPPER VALVE PLATE	1	BRONZE	B-584 C89833
37	BOTTOM SEAT O-RING	1	RUBBER	D-2000 BUNA N
38	DRAIN RING	1	BRONZE	B-62 C83600
39	SEAT RING	1	BRONZE	B-584 C89833
40	DRAIN RING HOUSING	1	CAST IRON	A-126 CLASS B
41	MAIN VALVE	1	RUBBER	D-2000 NATURAL
42	LOWER VALVE PLATE	1	CAST IRON	A-126 CLASS B
43	LOCK WASHER	1	STAINLESS STEEL	A-276 304

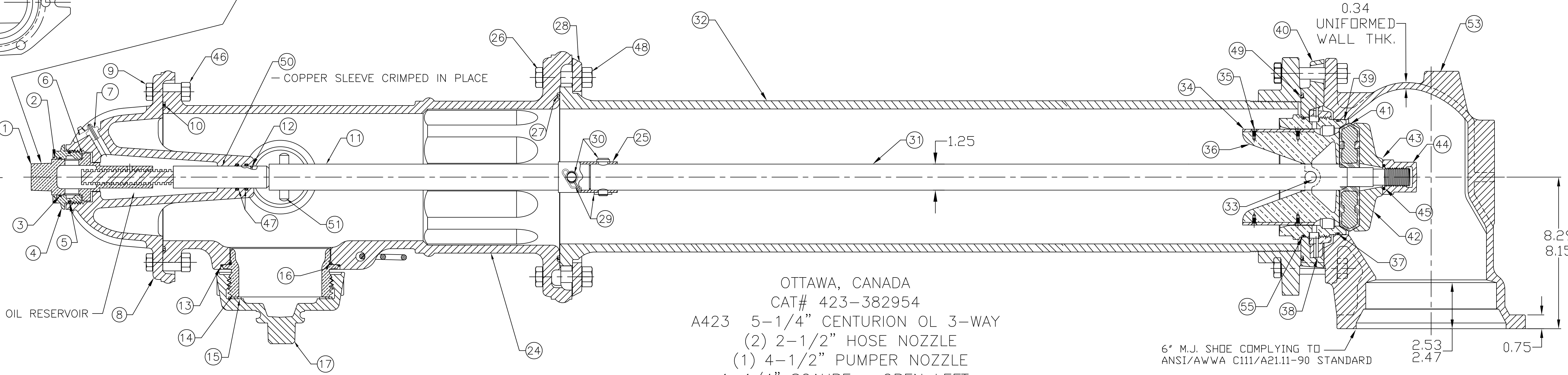
ITEM	DESCRIPTION	REQ'D	MATERIAL	A.S.T.M.
44	VALVE NUT	1	CAST IRON	A-126 CLASS B
45	VALVE NUT SEAL	1	RUBBER	NITRILE
46	HEX NUT	8	STEEL	A563 ELECTRO. GALV.
47	STEM O-RING	2	RUBBER	D-2000 BUNA N
48	TRAFFIC FLANGE NUT	8	STEEL	A-307/A429 ELECTRO. GALV.
49	DRAIN RING HOUSING O-RING	1	RUBBER	D-2000 BUNA N
50	SLEEVE	1	COPPER	B-75 ALLOY 122
51	UPPER STEM PIN	1	STAINLESS STEEL	A-276 303
52	HEX BOLT	6	STAINLESS STEEL	F593 304
53	SHOE	1	DUCTILE IRON	A536 65-45-12
* 54	BURY TAG	1	STAINLESS STEEL	A-240 304
* 55	TOP SEAT O-RING	1	RUBBER	D-2000 BUNA N
* 56	HEX NUT	6	STAINLESS STEEL	F593 304
* 57				
* 58				
* 59				

SEE CAT. RECORD FOR RESPECTIVE PARTS OR SUB. ASS'YS

* NOT SHOWN



OPEN LEFT APPROXIMATELY 17 1/4 TURNS TO OPEN 1-1/4" SQUARE OPERATING NUT



OTTAWA, CANADA
 CAT# 423-382954
 A423 5-1/4" CENTURION OL 3-WAY
 (2) 2-1/2" HOSE NOZZLE
 (1) 4-1/2" PUMPER NOZZLE
 1-1/4" SQUARE OPEN LEFT
 6" MJ SHOE WITHOUT FITTINGS

PAINT CODE Q9: NEUTRAL ORANGE PRIMER

OPT COND: LESS CHAINS. TYPE 304 STAINLESS STEEL BOLTS AND NUTS BELOW GROUND LINE. USE DIANA 2100 POTABLE GREASE IN OIL RESERVOIR WITH GREASE FITTING AND FITTING CAP. APPLY THIN COAT OF THRED GARD LUBRICANT ON ALL CAP THREADS OF NOZZLES. USE TYPE 17-4 STAINLESS STEEL UPPER AND LOWER STEMS. FABRICATED ONE PIECE DUCTILE IRON LOWER BARREL FOR 6'-6" AND ABOVE BURIES. BURY LINE MUST BE STENCILED ON LOWER BARREL.

(MILLIMETER) INCH INITIAL RELEASE DRFT'R ANC 4-2-19 CHK'R APP E.O. NUMBER EO4450	TOLERANCES - MACHINING UNLESS OTHERWISE NOTED BREAK EDGES FINISH SURFACES MACH. .006/016 125 FRACTIONS 2 PL ±.025 1/64 3 PL ±.010 DECIMALS ANGLES ±.010 ±1°	THIRD ANGLE PROJECTION PURCH. FINISH REF. NO. SCALE N.T.S. STK. NO.
MAT'L SEE TABLE DESCR. 5 1/4" A423 SUPER CENTURION "250" W/ TWO HOSE NOZZLES & ONE PUMPER NOZZLE		REVISION NUMBER FH-20009 SHEET 1 OF 1