

4

3

2

1

TOTAL VOLUME: 45000L

CONCRETE: 35MPa WITH 5-8% AIR ENTRAINMENT  
NON SULPHATE RESISTANT

REINFORCING: GRADE 400W CONFORMING TO CSA G30.18  
15M @ 200mm ON CENTRE EACH WAY  
ADDITIONAL 15M AROUND PERIMETER AT SEAM BETWEEN SECTIONS  
15M x900mm ON DIAGONAL AT EACH CORNER OF LID OPENING

WEIGHT: TOP SECTION 17500KGS  
BOTTOM SECTION 17500KGS  
TOTAL 35000KGS

MAXIMUM BURIAL DEPTH: 1200MM OF GROUND COVER IN AREA OF  
NON-VEHICULAR TRAFFIC

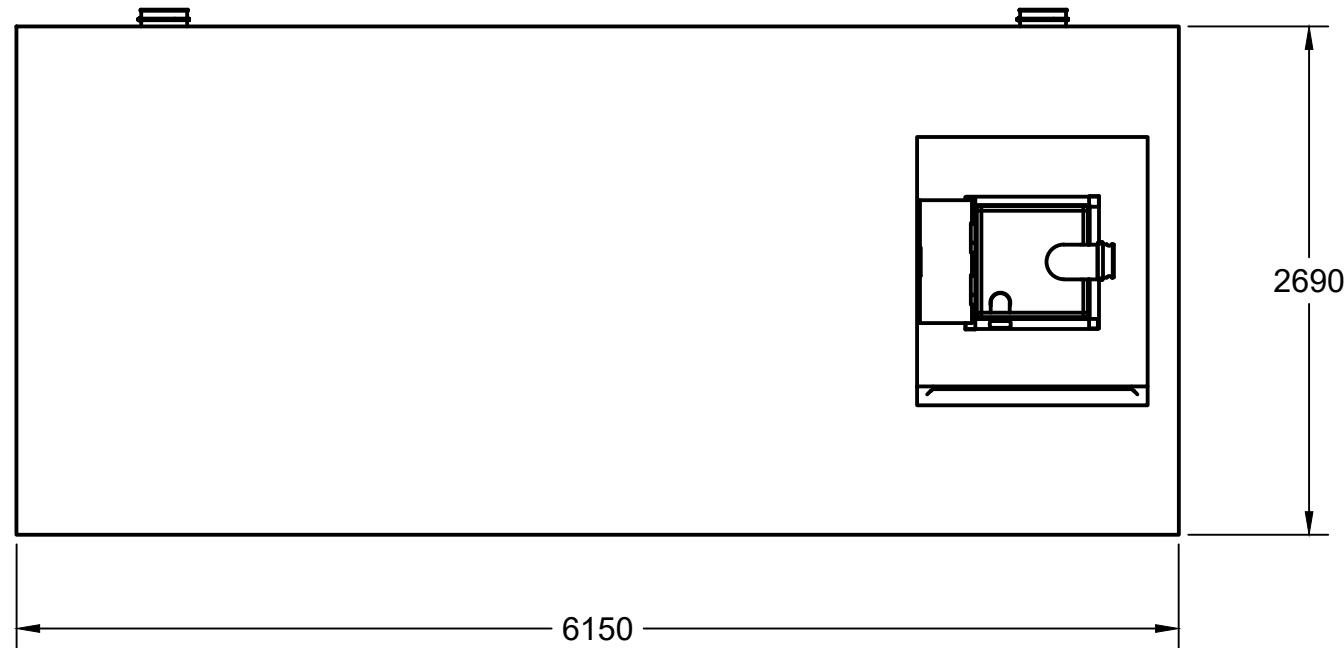
WATER TIGHTNESS: 2X ROWS CON-SEAL CS-102 MASTIC SEALANT BETWEEN  
SECTIONS. SEALANT APPLIED ONSITE BY BOYD BROS CONCRETE ACCORDING TO  
MANUFACTURER'S RECOMMENDED METHOD

PIPE/WALL CONNECTIONS: 200mmØ Flexible Rubber Bootseal for PVC Supply Line

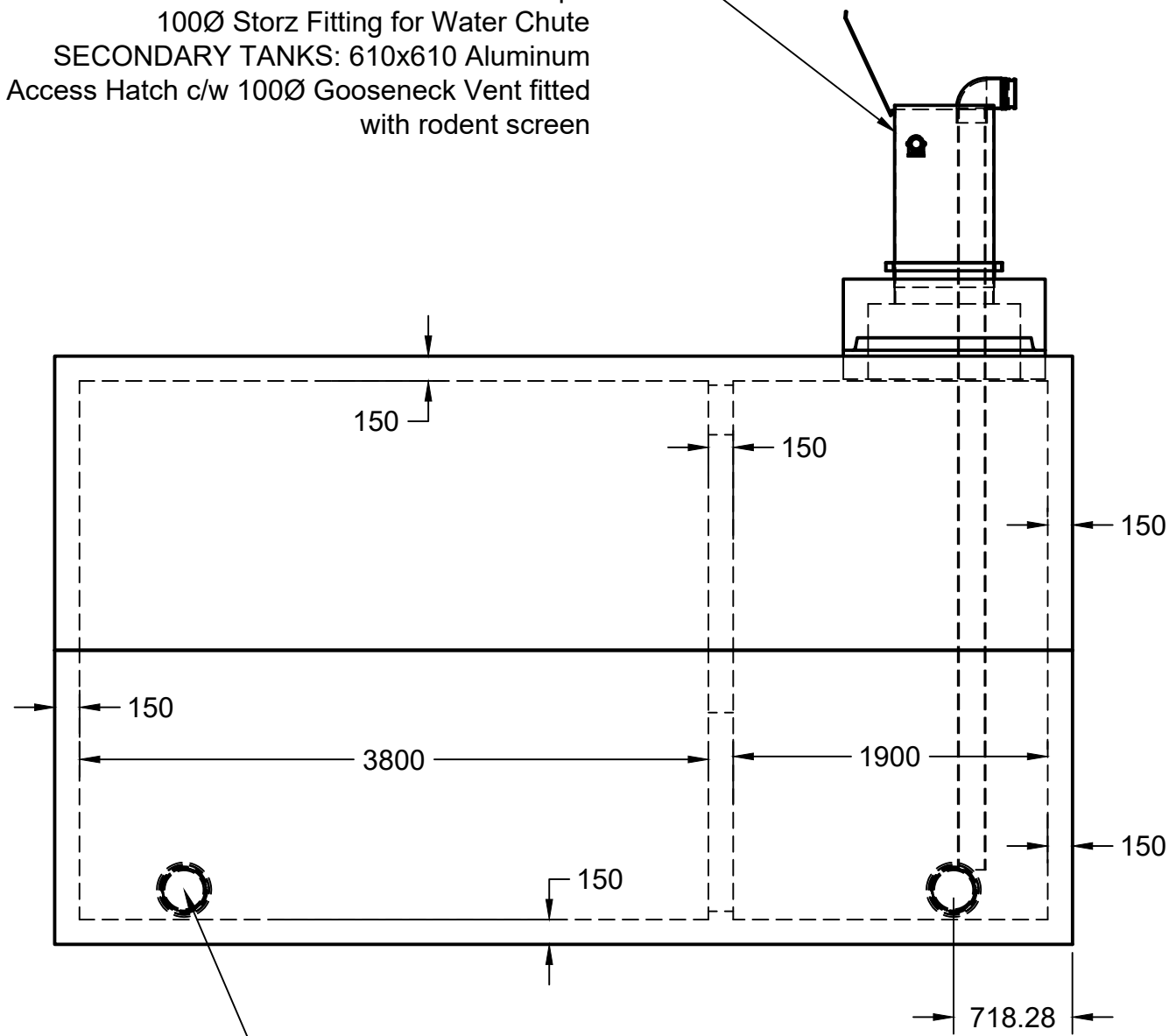
ACCESS OPENINGS:  
PRIMARY TANK: 610x610 CITY OF OTTAWA SPEC FIRE CHUTE FOR FIRETRUCK  
CONNECTION  
SECONDARY ACCESS (OPTIONAL) :1200x1300 CAST-IN RISER FLANGE WITH 610X610  
DRIP PROOF ALUMINUM ACCESS HATCH  
900X1200 OPENING IN DIVIDER WALL FOR ACCESS TO BOTH CHAMBERS FROM ONE  
ACCESS POINT

OPTIONAL STAINLESS STEEL BOLT-ON LADDER OPTIONAL

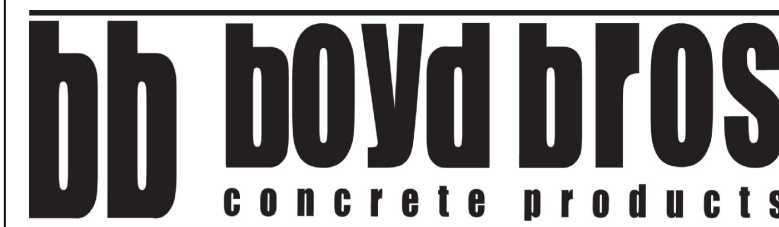
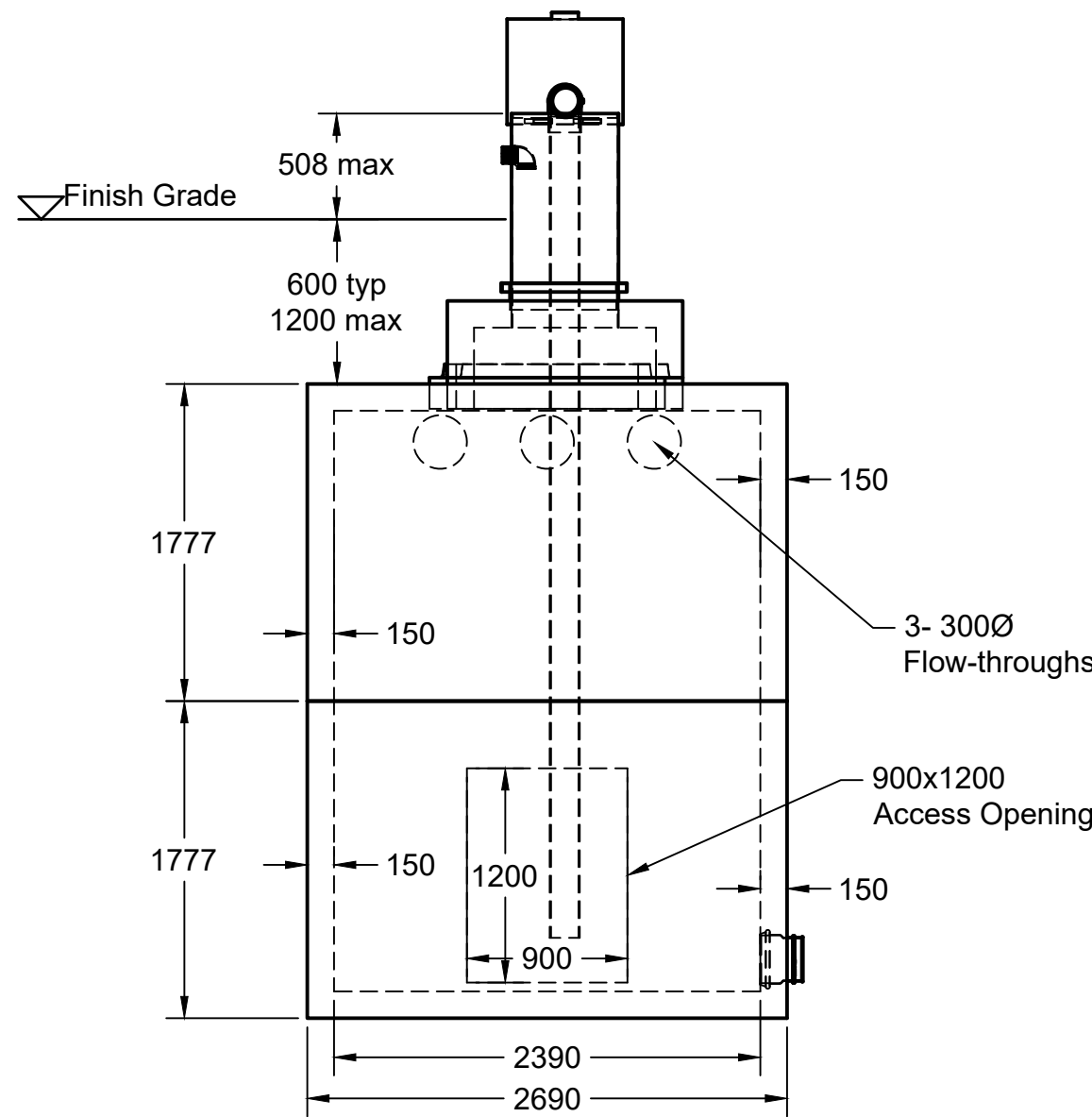
TANK DESIGN CONFORMS TO CSA STANDARD B66-15



PRIMARY TANK: 610x610 City of Ottawa Spec  
Fire Chute w/ 150Ø Female Dry Hydrant and  
Drawdown Pipe  
100Ø Storz Fitting for Water Chute  
SECONDARY TANKS: 610x610 Aluminum  
Access Hatch c/w 100Ø Gooseneck Vent fitted  
with rodent screen



2- 200Ø Interconnection Bootseals  
For Multiple Tank Cluster Systems



5450 Cuddy St Osgoode, ON K0A 2W0  
tel: (613) 826.2318 fax: (613) 826.3679  
toll free: 888.846.6664  
website: www.boydbrosconcrete.ca  
email: info@boydbrosconcrete.ca

PROJECT  
**Boyd Bros Concrete**

TITLE  
**45000 Fire Tank**

DRAWN Rob Sanna 6/19/23 APPROVED		REV
SIZE C	DWG NAME 45000 Fire Tank	2
SCALE 1:40	WEIGHT 35000kgs	SHEET 1/1

4

3

2

1