

- GENERAL NOTES:**
- It is the responsibility of the appropriate contractor or official to report any errors, omissions or discrepancies on this plan with actual site conditions to the Landscape Architect before proceeding with construction.
  - The contractor is to notify all utility companies and authorities prior to any excavation and ascertain locations of underground services.
  - The contractor is to reinstate all areas and items damaged as a result of construction activity.
  - The contractor is to comply with all pertinent codes and by-laws.
  - The contractor is to maintain a positive surface run-off throughout the entire construction period.
  - The Landscape Architect is not responsible for subsurface conditions.
  - The contractor is to identify all existing trees to remain on site with the Landscape Architect prior to construction.
  - The contractor is to stake the proposed location of all plant material in conjunction with the Landscape Architect prior to excavation.
  - Minimum distances for selected deciduous trees are as follows:
    - Sidewalks 1m
    - Underground Infrastructure 1.5m
    - Fire Hydrant 2.5m
    - Street Light 2.5m for Small Trees, 5m for Large/Medium Trees
  - All trees within 1m of underground utility trenches are to be excavated by hand.
  - Remove all protective wrapping from tree trunks after installation.
  - Staking of trees shall only be performed if necessary.
  - Ensure that mulch is pulled back a min. distance of 75mm from base of tree trunk.

**LEGAL DESCRIPTION**

**TOPOGRAPHICAL PLAN OF**  
 PART OF LOT 30 CONCESSION 10, GOULBOURN,  
 PART 1 PLAN 4R17373, EXCEPT PART 4, PLAN  
 4R20112;  
 OTTAWA  
 SUBJECT TO AN EASEMENT IN FAVOUR OF  
 HYDRO OTTAWA LIMITED OVER PARTS 5, 6, 7, 8  
 AND 9 PLAN 4R20112 AS IN OC455206.

ROAD ALLOWANCE BETWEEN LOTS 30 AND 31  
 CONCESSION 10,  
 GOULBOURN  
 LYING BETWEEN PARTS 3 AND 4 ON 4R17373  
 AND PART 2 ON PLAN 4R20112, AS CLOSED BY  
 N59928;  
 OTTAWA

PART OF LOT 31, CONCESSION 10,  
 GOULBOURN,  
 PART 1 ON PLAN 4R19334  
 CITY OF OTTAWA

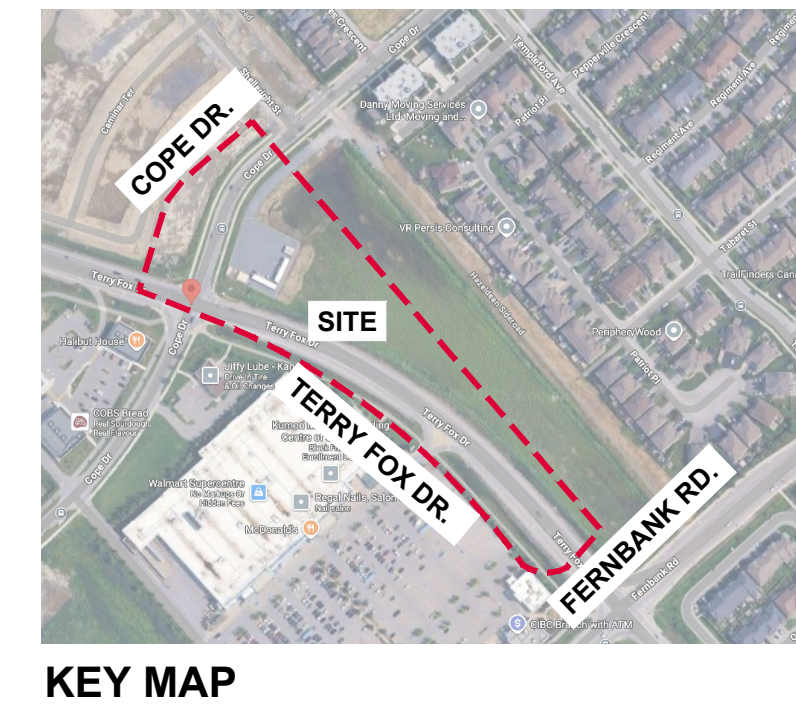
Prepared by Annis, O'Sullivan, Vollebek Ltd.  
 Field Work Completed December 14, 2020

**40 YEAR CANOPY CALCULATION:**

- 36,789m <sup>2</sup> Site Limit of Work
- (19) Large Deciduous Trees Proposed (177m <sup>2</sup> ea.)
- (81) Medium Deciduous Trees Proposed (79m <sup>2</sup> ea.)
- (48) Small Deciduous Trees Proposed (16m <sup>2</sup> ea.)
- (34) Coniferous Trees Proposed (20m <sup>2</sup> ea.)
<b>= 11,210m<sup>2</sup> canopy cover = 30.5% canopy cover</b>

\*Large deciduous tree calculated at 15m spread,  
 Medium deciduous tree calculated at 10m spread,  
 small deciduous tree calculated at 4.5m spread;  
 Conifer tree calculated at 5m spread.

CONTINUED ON DRAWING L.2



**CLIENT**  
 CLARIDGE HOMES

**CONSULTANTS**  
 ARCHITECTS: RLA ARCHITECTURE  
 ROBERT LANEY ARCHITECT INC.  
 96 BEECH STREET, OTTAWA, ONTARIO K1S 3J8  
 TEL: (613) 724-9922

**CIVIL ENGINEERS:** NOVATECH  
 ENGINEERS, PLANNERS & LANDSCAPE ARCHITECTS  
 SUITE 200, 240 MICHAEL COMPTON DRIVE,  
 OTTAWA, ONTARIO K2M 1W6  
 TEL: (613) 254-9643

**SURVEYOR:** Annis O'Sullivan Vollebek Ltd.  
 Ottawa Land Surveyors  
 14 Concourse Gate, Suite 500,  
 Nepean, Ontario K2E 7Z6  
 Tel: (613) 727-8855

**LEGEND**

- PROPOSED DECIDUOUS TREE
- REQUIRED SOIL VOLUME AT A 1.5m DEPTH
- PROPOSED CONIFEROUS TREE
- REQUIRED SOIL VOLUME AT A 1.5m DEPTH
- PROPOSED SHRUBS
- PROPOSED SOD

2	RE-ISSUED FOR SITE PLAN APPROVAL	04/02/2025	LC	JL
1	ISSUED FOR SITE PLAN APPROVAL	11/18/2025	LC	JL
No.	Issue	Date	DR	CK

**JAMES B. LENNOX & ASSOCIATES INC.**  
 LANDSCAPE ARCHITECTS  
 3332 CARLING AVE. OTTAWA, ONTARIO K2H 5A5  
 TEL: (613) 722-5168 FAX: (866) 343-3942

**PROJECT**  
 IRON VALLEY 2  
 TERRACE HOMES  
 5331 FERNBANK ROAD  
 OTTAWA, ONTARIO

**DRAWING**  
 LANDSCAPE PLAN

**STAMP**

**SCALE**  
 AS SHOWN

**START DATE**  
 JUNE, 2021

**PROJECT NO.**  
 21-CLG-2163

**DRAWING NO.**  
**L.1**

**PLOT SIZE ARCH-D**



CONSULTANTS  
 ARCHITECTS: RLA ARCHITECTURE  
 ROSEBUD LANE ARCHITECT INC.  
 96 BEECH STREET, OTTAWA, ONTARIO K1S 3J8  
 TEL: (613) 724-9922

CIVIL ENGINEERS: NOVATECH ENGINEERS, PLANNERS & LANDSCAPE ARCHITECTS  
 SUITE 200, 240 MICHAEL COMPTON DRIVE,  
 OTTAWA, ONTARIO K2E 7Z6  
 TEL: (613) 254-8643

SURVEYOR: Annis O'Sullivan Volebek Ltd.  
 Ottawa Land Surveyors  
 14 Concourse Gate, Suite 500,  
 Nepean, Ontario K2E 7Z6  
 TEL: (613) 727-8855

LEGEND

- PROPOSED DECIDUOUS TREE
- REQUIRED SOIL VOLUME AT A 1.5m DEPTH
- PROPOSED CONIFEROUS TREE
- REQUIRED SOIL VOLUME AT A 1.5m DEPTH
- PROPOSED SHRUBS
- PROPOSED SOD

2	RE-ISSUED FOR SITE PLAN APPROVAL	04/02/2025	LC	JL
1	ISSUED FOR SITE PLAN APPROVAL	11/18/2025	LC	JL
No.	Issue	Date	DR	CK

**JAMES B. LENNOX & ASSOCIATES INC.**  
 LANDSCAPE ARCHITECTS  
 3332 CARLING AVE. OTTAWA, ONTARIO K2H 5A5  
 TEL: (613) 722-5168 FAX: (613) 722-5162

PROJECT  
**IRON VALLEY 2 TERRACE HOMES**  
 5331 FERNBANK ROAD  
 OTTAWA, ONTARIO

DRAWING  
 LANDSCAPE PLAN

STAMP

AS SHOWN

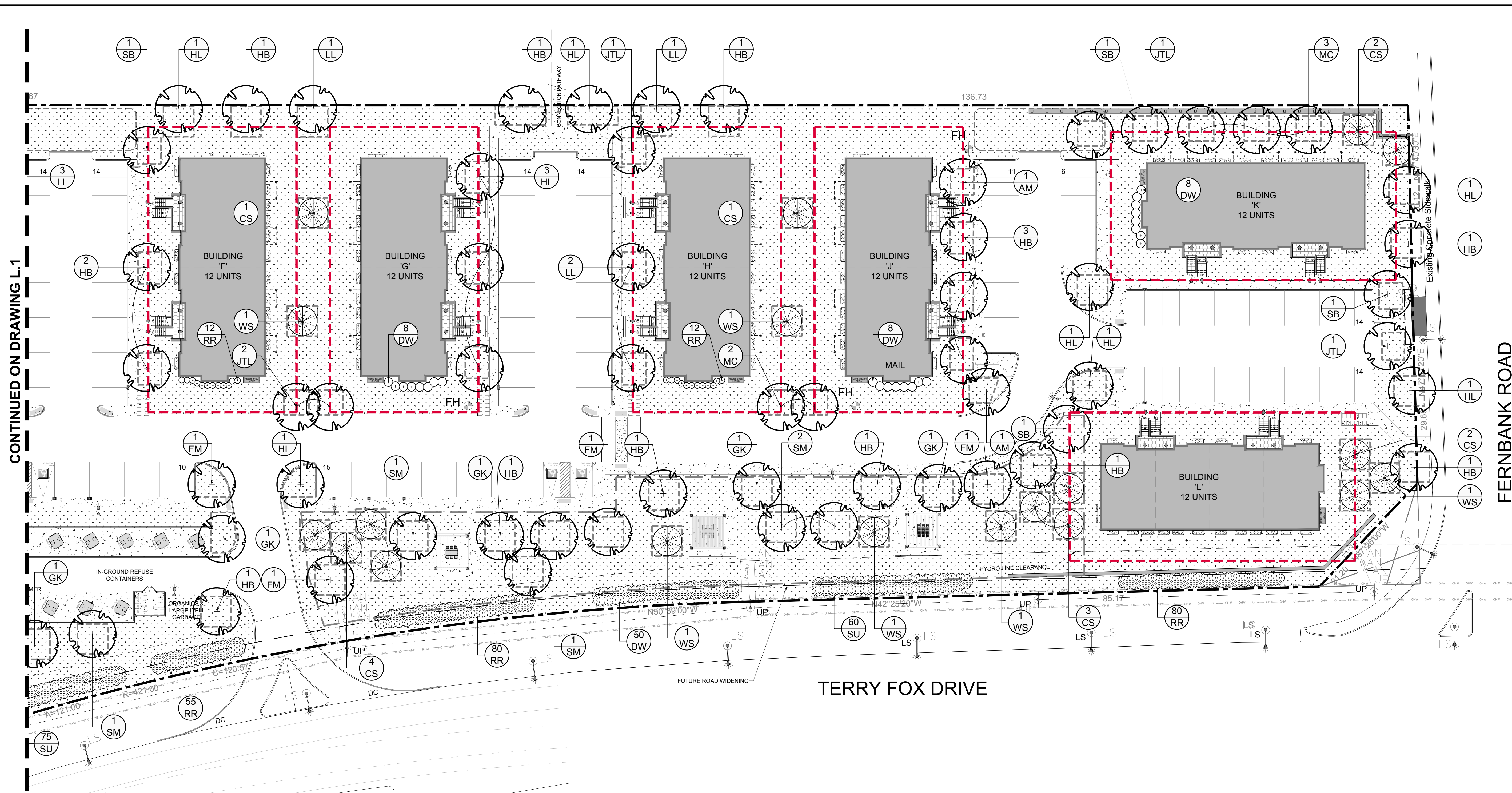
START DATE  
 JUNE, 2021

PROJECT NO.  
 21-CLG-2163

PROJECT NORTH

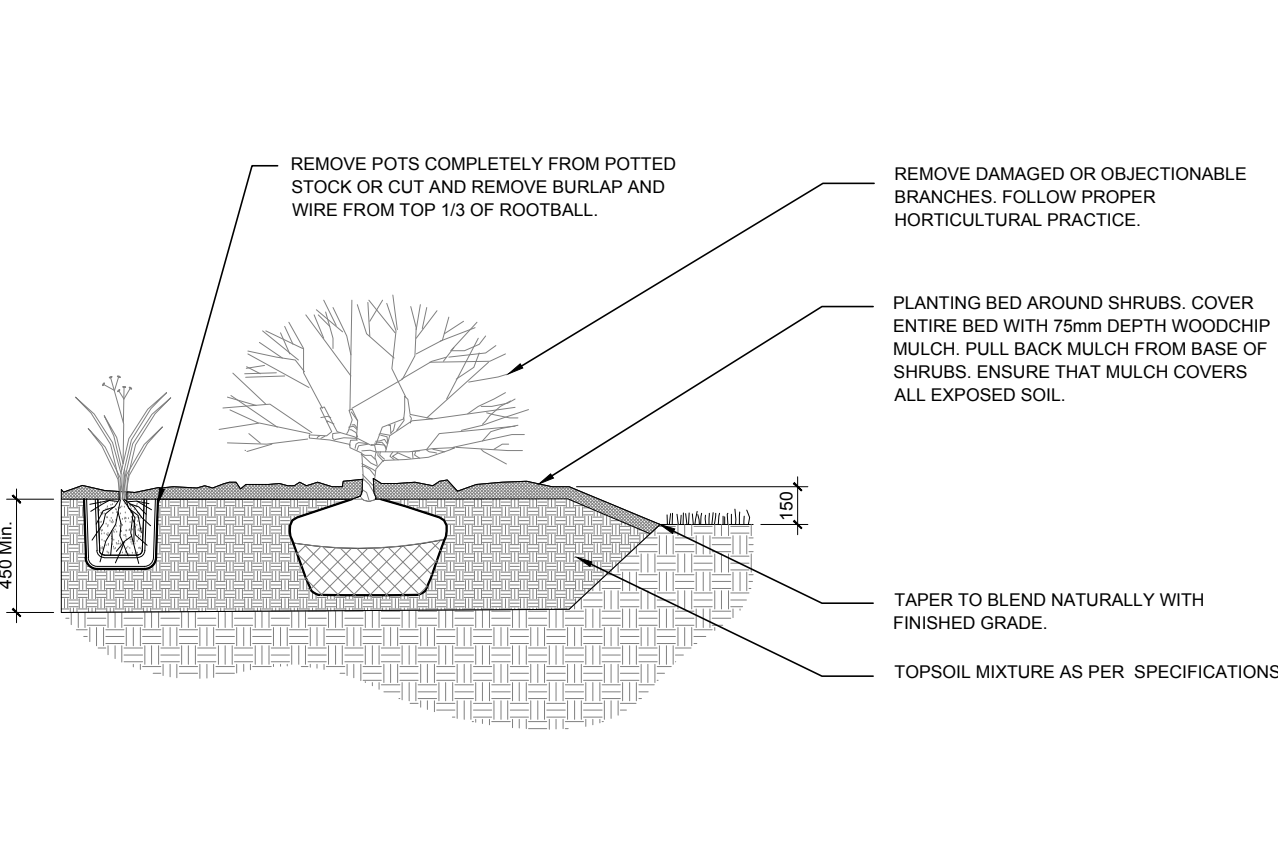
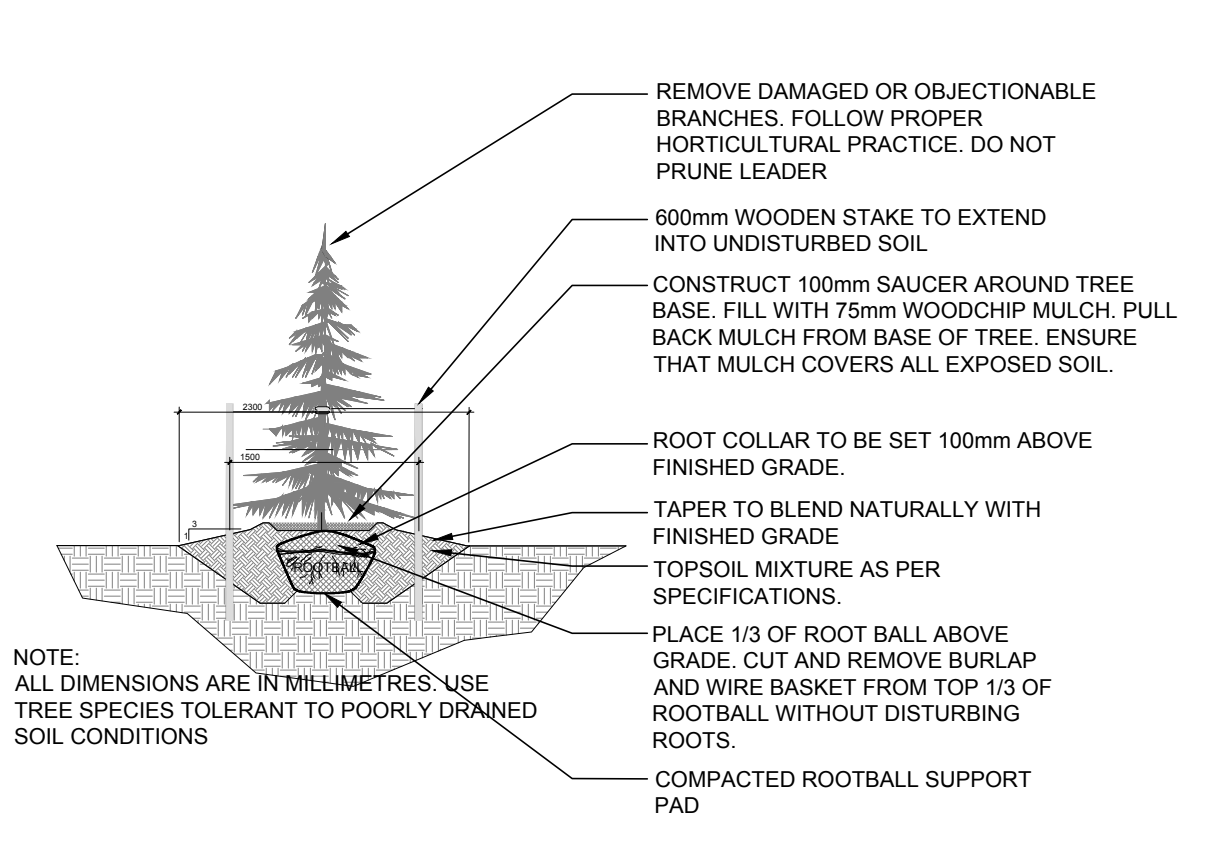
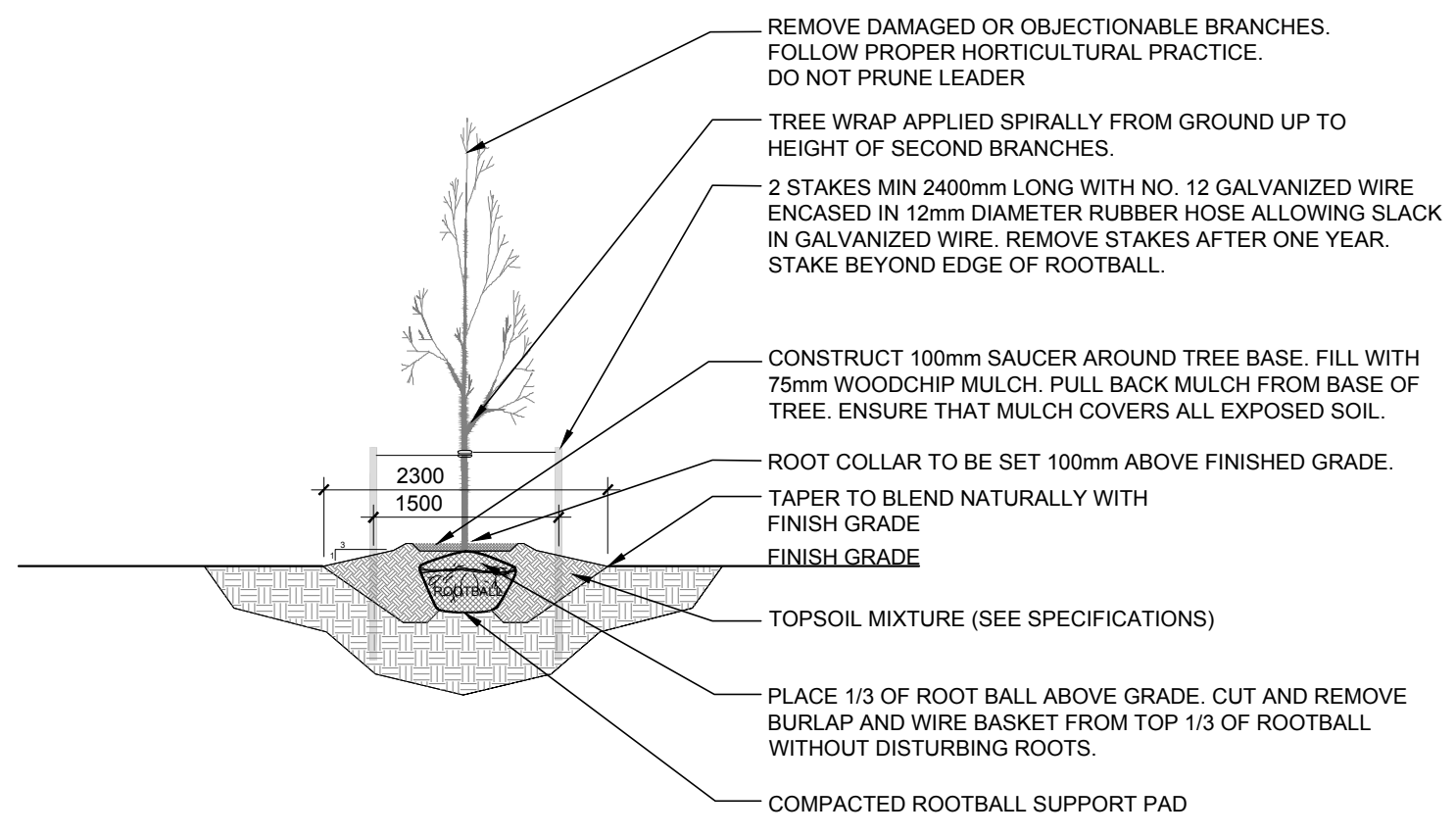
DRAWING NO.  
**L.2**

PLOT SIZE ARCH-D



1 LANDSCAPE PLAN  
 SCALE 1:300

NOTES:  
 1. ALL DIMENSIONS ARE IN MILLIMETRES.  
 2. USE TREE SPECIES TOLERANT TO POORLY DRAINED SOIL CONDITIONS.



**PROPOSED PLANT LIST**

KEY	Qty.	BOTANICAL NAME	COMMON NAME	SIZE	CONDITION	REMARKS
<b>TREES</b>						
AM	6	<i>Acer ginnala</i>	Amur Maple	50mm ø	B&B	Small tree
CS	22	<i>Picea pungens</i>	Colorado Spruce	1800 mm ht.	B&B	Large tree
FM	7	<i>Acer x freemanii</i>	Freeman's Maple	50mm ø	B&B	Large tree
GK	5	<i>Ginkgo biloba</i>	Maidenhair Tree	50mm ø	B&B	Large tree
HB	34	<i>Celtis occidentalis</i>	Hackberry	50mm ø	B&B	Medium tree
HL	30	<i>Gleditsia triacanthos var. inermis 'Shademaster'</i>	Shademaster Honeylocust	50mm ø	B&B	Medium tree
JTL	12	<i>Syringa reticulata</i>	Japanese Tree Lilac	50mm ø	B&B	Small tree
LL	17	<i>Tilia cordata</i>	Littleleaf Linden	50mm ø	B&B	Medium tree
MC	20	<i>Malus 'Makamiki'</i>	Makamiki Crabapple	50mm ø	B&B	Small tree
SB	10	<i>Amelanchier canadensis</i>	Shadbowl Serviceberry	50mm ø	B&B	Small tree
SM	7	<i>Acer saccharum</i>	Sugar Maple	50mm ø	B&B	Large tree
WS	12	<i>Picea glauca</i>	White Spruce	1800 mm ht.	B&B	Large tree
<b>SHRUBS</b>						
DW	276	<i>Cornus sericea</i>	Red Osier Dogwood	800mm ht.	Potted	1200mm o.c.
RR	435	<i>Rosa rugosa</i>	Rugosa Rose	800mm ht.	Potted	800mm o.c.
SU	226	<i>Rhus typhina 'Laciniata'</i>	Cutleaf Staghorn Sumac	800 mm ht.	Potted	1200 mm o.c.

2 DECIDUOUS TREE PLANTING  
 L.2 N.T.S.

3 CONIFEROUS TREE PLANTING  
 L.2 N.T.S.

4 SHRUB AND PERENNIAL PLANTING  
 L.2 N.T.S.

D07-12-25-0151