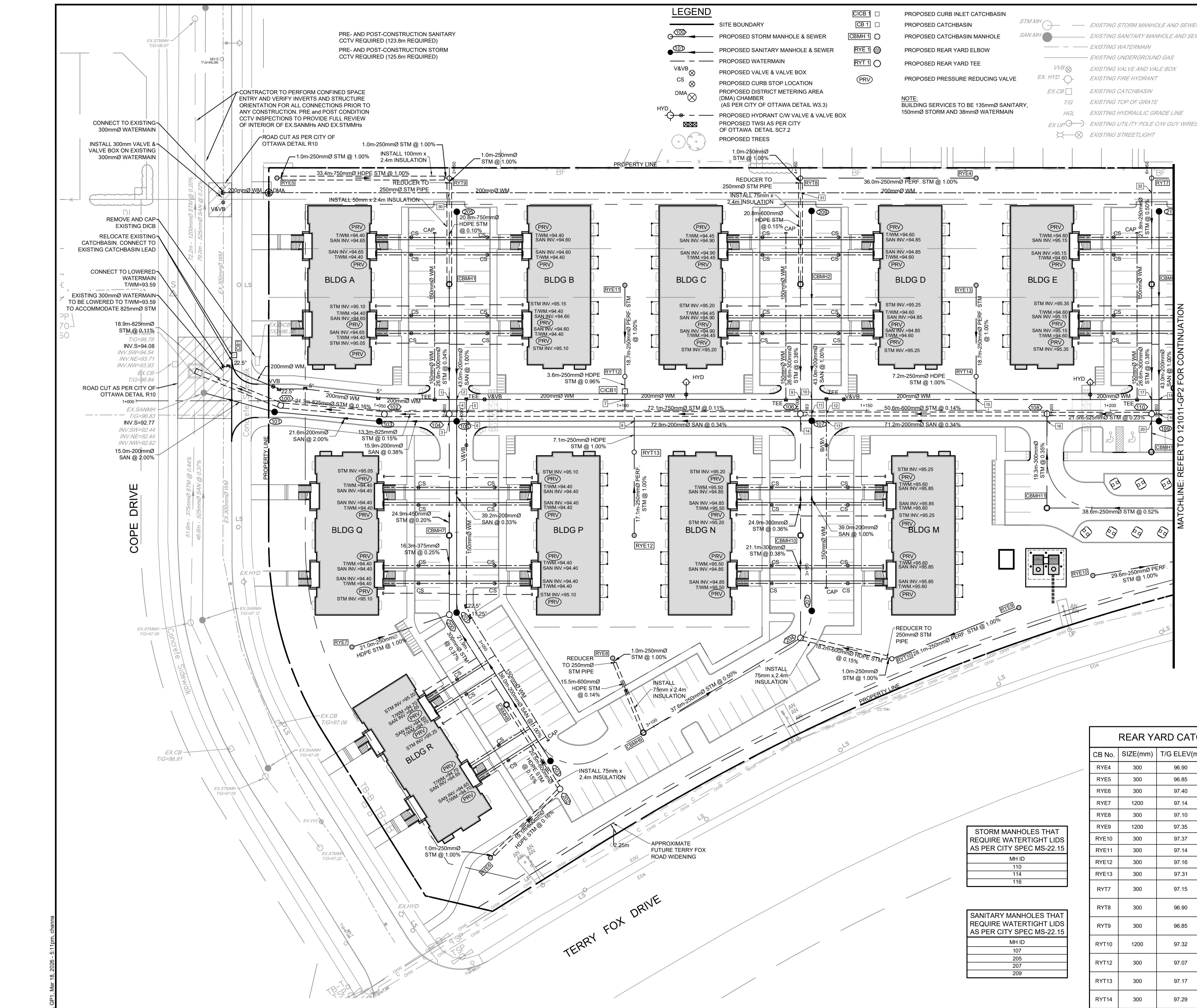
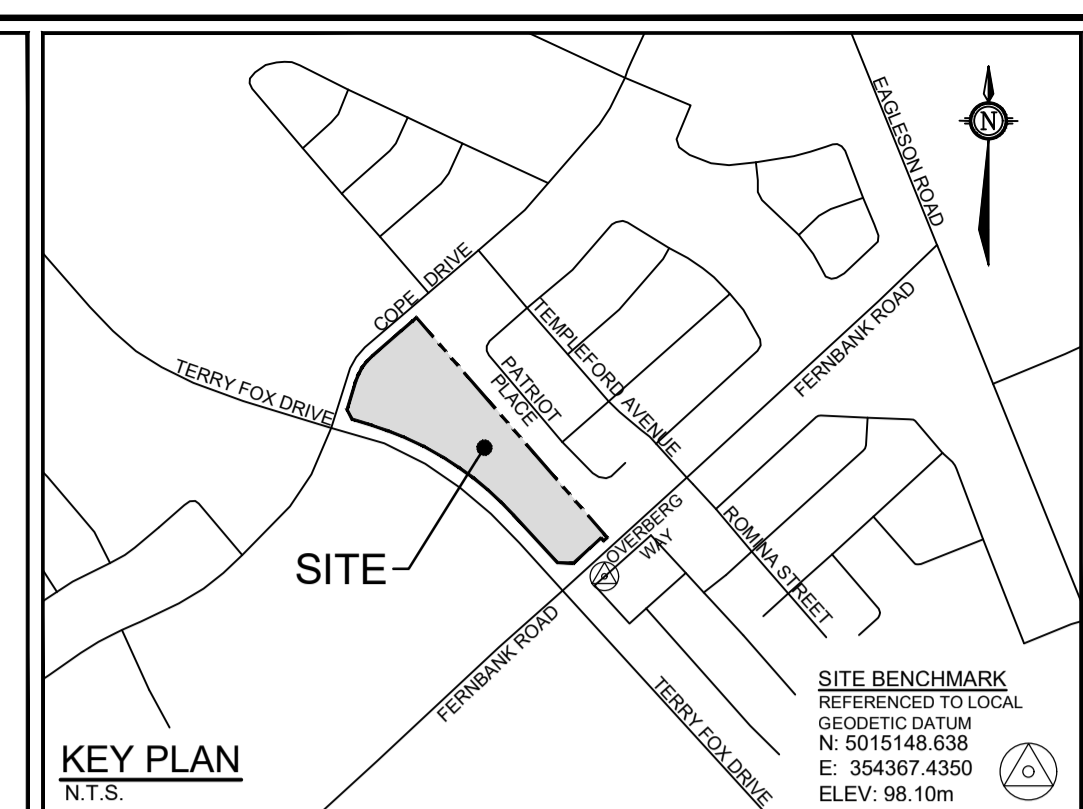
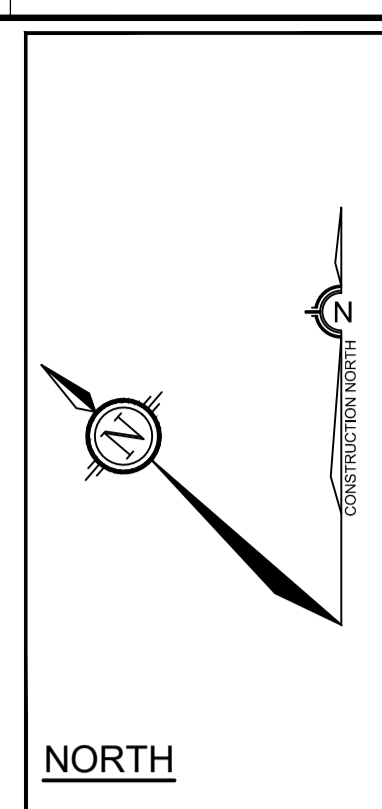


LEGEND

- SITE BOUNDARY
- PROPOSED STORM MANHOLE & SEWER
- PROPOSED SANITARY MANHOLE & SEWER
- PROPOSED WATERMAIN
- PROPOSED VALVE & VALVE BOX
- PROPOSED CURB STOP LOCATION
- PROPOSED DISTRICT METERING AREA (DMA) CHAMBER (AS PER CITY OF OTTAWA DETAIL W3.3)
- PROPOSED HYDRANT C/W VALVE & VALVE BOX
- PROPOSED TWSI AS PER CITY OF OTTAWA DETAIL SCT.2
- PROPOSED TREES
- PROPOSED CURB INLET CATCHBASIN
- PROPOSED CATCHBASIN
- PROPOSED CATCHBASIN MANHOLE
- PROPOSED REAR YARD ELBOW
- PROPOSED REAR YARD TEE
- PROPOSED PRESSURE REDUCING VALVE

- EXISTING STORM MANHOLE AND SEWER
- EXISTING SANITARY MANHOLE AND SEWER
- EXISTING WATERMAIN
- EXISTING UNDERGROUND GAS
- EXISTING VALVE AND VALVE BOX
- EXISTING FIRE HYDRANT
- EXISTING CATCHBASIN
- EXISTING TOP OF GRATE
- EXISTING HYDRAULIC GRADE LINE
- EXISTING UTILITY POLE C/W GUY WIRES
- EXISTING STREETLIGHT

NOTE:
BUILDING SERVICES TO BE 150mmØ SANITARY,
150mmØ STORM AND 38mmØ WATERMAIN



PIPE CROSSING TABLE

CROSSING #	WATERMAIN	SANITARY	STORM
1	INV = 92.98 OBV = 93.18	INV = 92.92 OBV = 93.12	INV = 94.69 OBV = 94.99
2	INV = 92.98 OBV = 93.18	INV = 93.02 OBV = 93.22	INV = 94.53 OBV = 94.83
3	INV = 93.00 OBV = 93.20	INV = 93.69 OBV = 93.89	INV = 94.98 OBV = 95.28
4	INV = 93.00 OBV = 93.20	INV = 93.66 OBV = 93.86	INV = 94.98 OBV = 95.28
5	INV = 93.00 OBV = 93.20	INV = 93.66 OBV = 93.86	INV = 94.98 OBV = 95.28
6	INV = 93.00 OBV = 93.20	INV = 93.66 OBV = 93.86	INV = 94.98 OBV = 95.28
7	INV = 93.00 OBV = 93.20	INV = 93.66 OBV = 93.86	INV = 94.98 OBV = 95.28
8	INV = 93.00 OBV = 93.20	INV = 93.66 OBV = 93.86	INV = 94.98 OBV = 95.28
9	INV = 93.00 OBV = 93.20	INV = 93.66 OBV = 93.86	INV = 94.98 OBV = 95.28
10	INV = 93.00 OBV = 93.20	INV = 93.66 OBV = 93.86	INV = 94.98 OBV = 95.28
11	INV = 93.00 OBV = 93.20	INV = 93.66 OBV = 93.86	INV = 94.98 OBV = 95.28
12	INV = 93.00 OBV = 93.20	INV = 93.66 OBV = 93.86	INV = 94.98 OBV = 95.28
13	INV = 93.00 OBV = 93.20	INV = 93.66 OBV = 93.86	INV = 94.98 OBV = 95.28
14	INV = 93.00 OBV = 93.20	INV = 93.66 OBV = 93.86	INV = 94.98 OBV = 95.28
15	INV = 93.00 OBV = 93.20	INV = 93.66 OBV = 93.86	INV = 94.98 OBV = 95.28
16	INV = 93.00 OBV = 93.20	INV = 93.66 OBV = 93.86	INV = 94.98 OBV = 95.28
17	INV = 93.00 OBV = 93.20	INV = 93.66 OBV = 93.86	INV = 94.98 OBV = 95.28
18	INV = 93.00 OBV = 93.20	INV = 93.66 OBV = 93.86	INV = 94.98 OBV = 95.28
19	INV = 93.00 OBV = 93.20	INV = 93.66 OBV = 93.86	INV = 94.98 OBV = 95.28
20	INV = 93.00 OBV = 93.20	INV = 93.66 OBV = 93.86	INV = 94.98 OBV = 95.28
30	INV = 94.05 OBV = 94.25	INV = 94.44 OBV = 94.64	INV = 94.79 OBV = 94.99
31	INV = 94.05 OBV = 94.25	INV = 94.44 OBV = 94.64	INV = 94.79 OBV = 94.99
32	INV = 94.05 OBV = 94.25	INV = 94.44 OBV = 94.64	INV = 94.79 OBV = 94.99

SAN MANHOLE TABLE

MANHOLE ID	SIZE(mm)	STATION	T/G ELEV(m)	INVERT(m)
101	1200	1+028.42	96.94	SE=93.10 NW=93.07
103	1200	1+050.12	97.04	SE=93.56 NW=93.53
105	1200	1+065.88	97.04	NE=93.68 NW=93.62 SE=93.65 SW=93.68
107	1200	1+138.76	97.10	SE=93.93 NW=93.90 SW=93.86 NE=93.86
109	1200	1+210.01	97.35	SE=94.20 NW=94.17 NE=94.23
201	1200	3+041.42	97.14	SE=93.84 NW=93.81
203	1200	3+077.08	97.23	NE=94.20
205	1200	2+040.73	97.00	SW=94.11
207	1200	3+141.50	97.01	NE=94.35
209	1200	4+040.90	97.07	SW=94.39
211	1200	6+040.80	97.33	SW=94.66

STM MANHOLE TABLE

MANHOLE ID	SIZE(mm)	STATION	T/G ELEV(m)	INVERT(m)
100	1500	1+029.68	96.96	N=94.10 SE=94.10
102	1500	1+051.06	97.03	SE=94.13 NW=94.13
104	1800	1+064.37	97.03	SE=94.23 SW=94.53 NE=94.68 NW=94.15
106	1500	1+136.45	97.11	SE=94.46 NE=94.76 NW=94.31 SW=94.76
108	1200	1+187.05	97.28	SE=94.60 NW=94.83 NW=94.53
110	1200	1+208.53	97.36	SE=94.65 NE=94.88 NW=94.65 SW=94.98
200	1200	3+041.42	97.14	NE=94.69 SE=94.77 NW=94.82
202	1500	3+080.10	97.38	N=94.88 W=94.88
204	1200	3+135.29	97.10	W=94.98 NE=94.93 SE=94.98

REAR YARD CATCHBASIN TABLE

CB No.	SIZE(mm)	T/G ELEV(m)	INVERT(m)	ICD SIZE (mm)
RYE4	300	96.90	NW=95.26	
RYE5	300	96.85	SE=95.15	
RYE6	300	97.40	E=94.92	
RYE7	1200	97.14	SE=95.03	94mmØ PLATE
RYE8	300	97.10	SW=95.20	
RYE9	1200	97.35	NW=95.30	
RYE10	300	97.37	SE=95.47	
RYE11	300	97.14	SW=95.64	
RYE12	300	97.16	NE=95.76	
RYE13	300	97.31	SW=95.91	
RYT7	300	97.15	SW=95.14 SE=95.14	
RYT8	300	96.90	SW=94.90 SE=94.90	
RYT9	300	96.85	SW=94.90 NW=94.80	
RYT10	1200	97.32	NW=95.02 SE=95.02	
RYT12	300	97.07	NE=95.45 SW=95.45	
RYT13	300	97.17	SW=95.59 NE=95.59	83mmØ PLATE
RYT14	300	97.29	NE=95.72 SW=95.72	83mmØ PLATE

CATCHBASIN TABLE

CB No.	SIZE(mm)	STATION	T/G ELEV(m)	INVERT(m)	ICD DIA (mm)
CB1	600 x 600	1+019.58	96.77		
CBM1	1500	2+025.87	96.74	SW=94.77 NE=94.77	TEMPEST LMF VORTEX 45
CBM2	1500	4+025.87	96.84	SW=94.86 NE=94.86	83mmØ PLATE
CBM3	1200	6+025.86	97.10	SW=94.98 NE=95.03	83mmØ PLATE
CBM7	1200	3+025.66	96.78	SW=94.65 NE=94.58	
CBM8	1200	3+062.79	96.92	S=94.85 N=94.85	TEMPEST LMF VORTEX 70
CBM9	1200	3+097.52	97.14	E=95.17 NE=95.17	
CBM10	1200	3+157	96.86	SW=94.85 NE=94.85	83mmØ PLATE
CBM11	1800	5+017.92	97.08	NE=94.90 SE=94.95	83mmØ PLATE
CBM13	1200	1+208.45	97.23	NE=94.91 SW=95.42	83mmØ PLATE
CICB1	600 x 600	1+100.41	96.99	NE=95.42 SW=95.42	83mmØ PLATE

STORM MANHOLES THAT REQUIRE WATERTIGHT LIDS AS PER CITY SPEC MS-22.15

MH ID
110
114
116

SANITARY MANHOLES THAT REQUIRE WATERTIGHT LIDS AS PER CITY SPEC MS-22.15

MH ID
107
205
207
208

SCALE

1:400

DESIGN

No.	REVISION	DATE	BY
7.	REVISED PER CITY COMMENTS	MAR 18/26	DDB
6.	REVISED SITE PLAN SUBMISSION	NOV 14/25	DDB
5.	RE-ISSUED FOR TENDER	JAN 18/24	DDB
4.	ISSUED FOR TENDER	MAY 20/22	DDB
3.	REVISED PER CITY COMMENTS	FEB 17/22	DDB
2.	REVISED PER CITY COMMENTS	NOV 5/21	DDB
1.	ISSUED FOR CITY OF OTTAWA REVIEW	JUN 2/21	DDB

FOR REVIEW ONLY

DESIGN: BM
CHECKED: DDB
DRAWN: ATE
CHECKED: BM
APPROVED: DDB

N VATECH
Engineers, Planners & Landscape Architects
Suite 200, 240 Michael Cowpland Drive
Ottawa, Ontario, Canada K2M 1P6
Telephone: (613) 254-9643
Facsimile: (613) 254-5867
Website: www.nvatech-eng.com

CITY OF OTTAWA
5331 FERNBANK ROAD
IRON VALLEY 2

DRAWING NAME
GENERAL PLAN OF SERVICES

PROJECT No.: 121011-00
REV: REV #7
DRAWING No.: 121011-GP1
#18539

NOTE:
THE POSITION OF ALL POLE LINES, CONDUITS,
WATERMANS, SEWERS AND OTHER
UNDERGROUND AND OVERGROUND UTILITIES AND
STRUCTURES IS NOT NECESSARILY SHOWN ON
THE CONTRACT DRAWINGS, AND WHERE SHOWN,
THE ACCURACY OF THE POSITION OF SUCH
UTILITIES AND STRUCTURES IS NOT GUARANTEED.
BEFORE STARTING WORK, DETERMINE THE EXACT
LOCATION OF ALL SUCH UTILITIES AND
STRUCTURES AND ASSUME ALL LIABILITY FOR
DAMAGE TO THEM.

M:\2021\121011\121011-GP1.dwg, GP1, Mar 18, 2026 - 5:11pm, channa