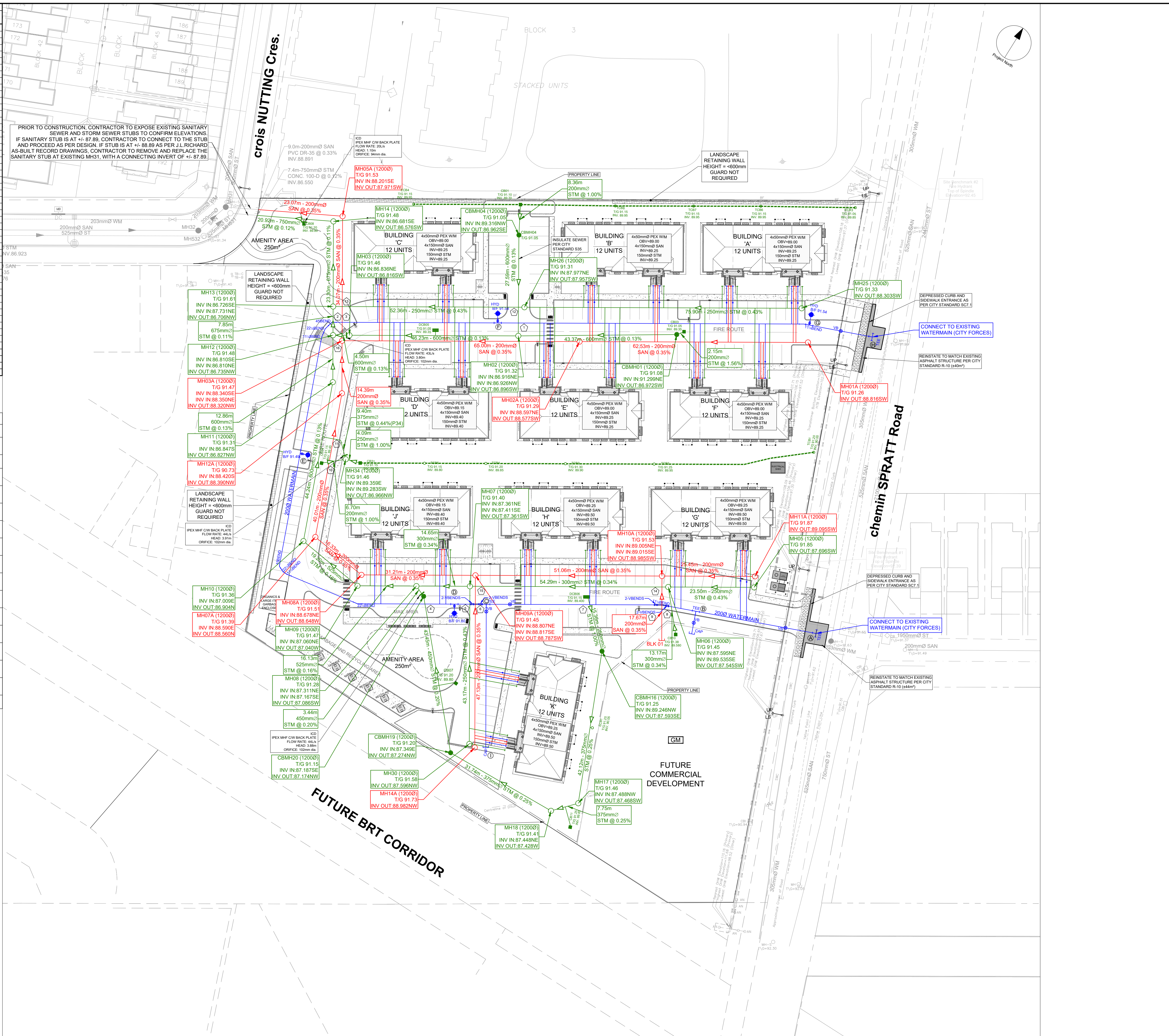


WATERMAIN SCHEDULE				
Station	Description	Finished Grade	Top of Watermain	As Built Watermain
A	0+000	TEE	491.53	891.23
	0+008.52	VB	91.67	89.267
	0+020.00		91.60	89.202
B	0+033.44	TEE	91.53	89.126
	0+040.00	VBEND	91.49	89.059
	0+041.31	VBEND	91.48	89.080
	0+042.01	VBEND	91.48	88.450
	0+043.01	11 BEND	91.47	88.450
	0+044.01	VBEND	91.47	88.450
	0+044.71	VBEND	91.47	89.050
	0+060.00		91.25	88.846
	0+063.20		91.20	88.803
	0+060.00		91.46	88.061
	0+084.50		91.53	89.130
C	0+090.98	TEE	91.45	89.049
	0+092.28	VBEND	91.43	89.032
	0+092.98	VBEND	91.42	88.340
	0+094.48	VBEND	91.40	88.340
	0+095.18	VBEND	91.39	88.994
D	0+099.71	HYD TEE	91.34	88.935
	0+120.00		91.38	88.978
	0+128.25		91.39	88.992
	0+138.72	11 BEND	91.47	89.072
	0+147.15	11 BEND	91.51	89.112
	0+148.40	11 BEND	91.51	89.110
	0+150.25	45 BEND	91.51	89.114
	0+160.00		91.45	89.052
	0+177.53	45 BEND	91.34	88.941
E	0+181.63	HYD TEE	91.33	88.926
	0+182.00		91.32	88.922
	0+200.00		91.42	89.020
	0+213.99	11 BEND	91.50	89.100
	0+216.49	22 BEND	91.53	89.131
	0+219.04	45 BEND	91.55	89.246
	0+228.45	45 BEND	91.47	89.074
	0+240.00		91.25	88.852
	0+247.44		91.13	88.730
	0+260.00		91.27	88.872
	0+264.46		91.32	88.922
F	0+275.53	HYD TEE	91.38	88.982
	0+280.00		91.35	88.950
	0+300.00		91.21	88.809
	0+315.47		91.10	88.599
	0+320.00		91.12	88.724
	0+340.00		91.23	88.833
	0+348.28	11 BEND	91.28	88.879
G	0+349.77	HYD TEE	91.29	88.900
	0+358.54	VB	91.35	88.952
	0+367.33	TEE	491.17	888.772
I	0+000	CAP	91.74	89.341
	0+037.23	VB	91.51	89.111
C	0+039.23	TEE	91.45	89.049



PIPE INTERFERENCE TABLE			
Crossing No.	PIPE 1	PIPE 2	Clearance
1	WTR Bottom 88.73	STM Top 87.83	1.10
2	WTR Bottom 89.01	STM Top 87.51	1.50
3	WTR Bottom 89.95	SAN Top 88.51	0.45
4	WTR Bottom 89.73	STM Top 87.72	1.00
5	WTR Bottom 89.76	STM Top 87.72	1.05
6	SAN Bottom 89.04	WTR Top 88.34	0.50
7	STM Bottom 89.37	WTR Top 88.81	0.56
8	STM Bottom 89.54	WTR Top 89.09	0.46
9	SAN Bottom 89.04	WTR Top 88.54	0.50
10	STM Bottom 89.32	SAN Top 88.89	0.63
11	SAN Bottom 88.46	STM Top 87.87	0.79
12	STM Bottom 87.92	STM Top 87.83	0.28
13	SAN Bottom 88.28	STM Top 88.03	0.25
14	SAN Bottom 89.02	STM Top 87.85	1.17
15	SAN Bottom 88.82	STM Top 87.87	1.15
17	STM Bottom 88.31	STM Top 87.51	0.80

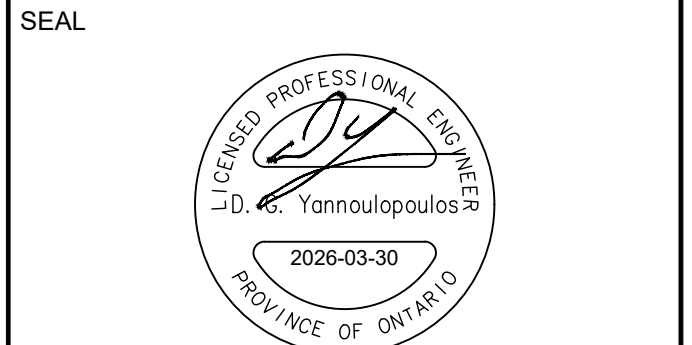
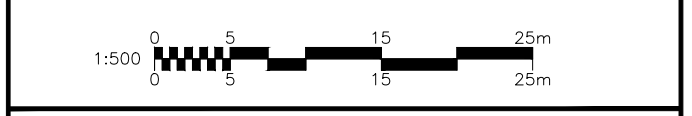
PRIOR TO CONSTRUCTION, CONTRACTOR TO EXPOSE EXISTING SANITARY SEWER AND STORM SEWER STUBS TO CONFIRM ELEVATIONS. IF SANITARY STUB IS AT +/- 87.89, CONTRACTOR TO CONNECT TO THE STUB AND PROCEED AS PER DESIGN. IF STUB IS AT +/- 88.89 AS PER J.L. RICHARD AS-BUILT RECORD DRAWINGS, CONTRACTOR TO REMOVE AND REPLACE THE SANITARY STUB AT EXISTING MH01, WITH A CONNECTING INVERT OF +/- 87.89.

CLIENT
CLARIDGE HOMES
 210 Gladstone Ave, Ottawa, ON K0P 0Y6

COPYRIGHT
 This drawing has been prepared solely for the intended use, thus any reproduction or distribution for any purpose other than authorized by Arcadis is forbidden. Written dimensions shall have precedence over scaled dimensions. Contractors shall verify and be responsible for all dimensions and conditions on the job, and Arcadis shall be informed of any variations from the dimensions and conditions shown on the drawing. Shop drawings shall be submitted to Arcadis for general conformance before proceeding with fabrication.

Arcadis Professional Services (Canada) Inc.
 formerly ISI Group Professional Services (Canada) Inc.

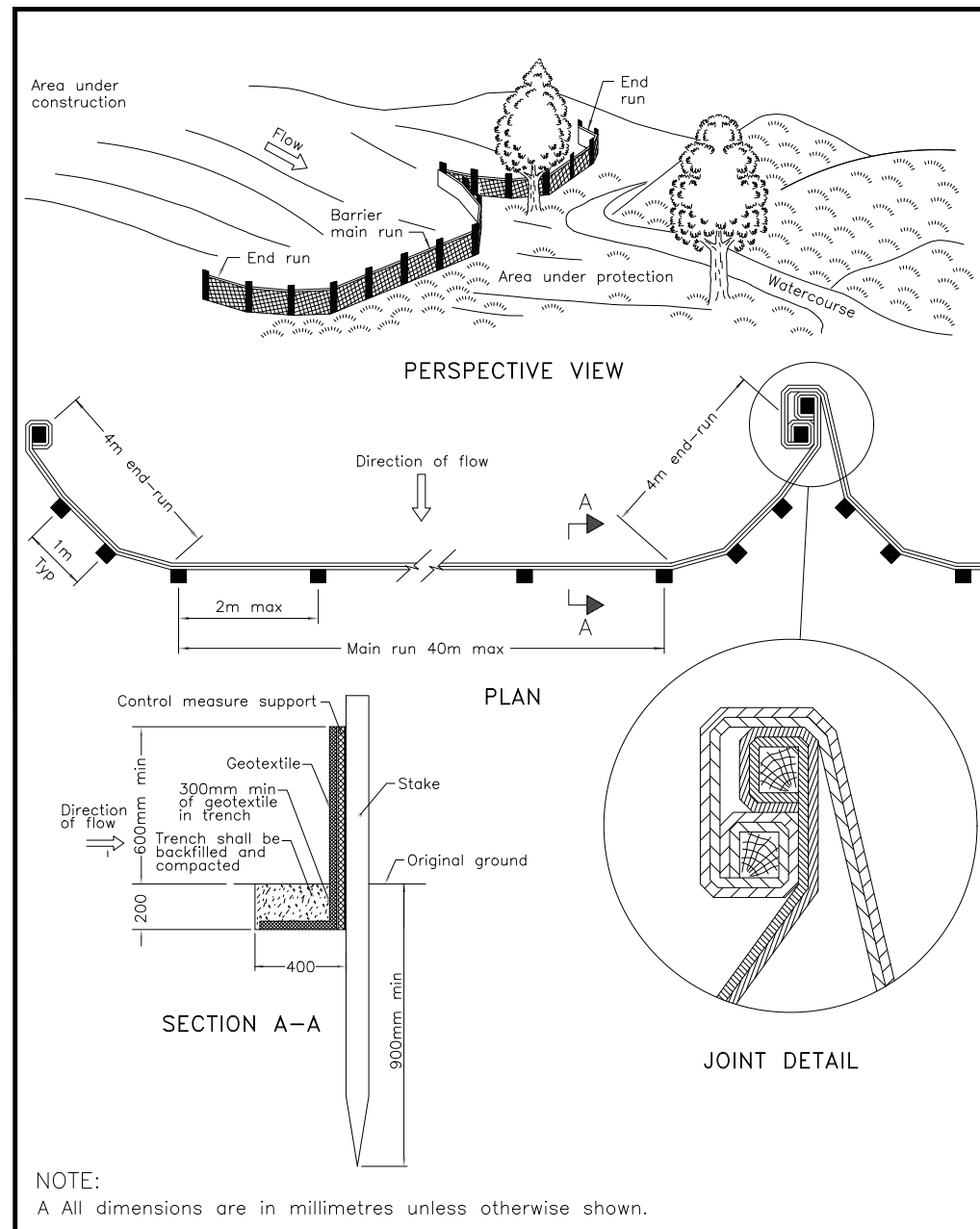
ISSUES		
No.	DESCRIPTION	DATE
5	SUBMISSION No.1 FOR ITY REVIEW	2026-03-30
6		
7		
8		



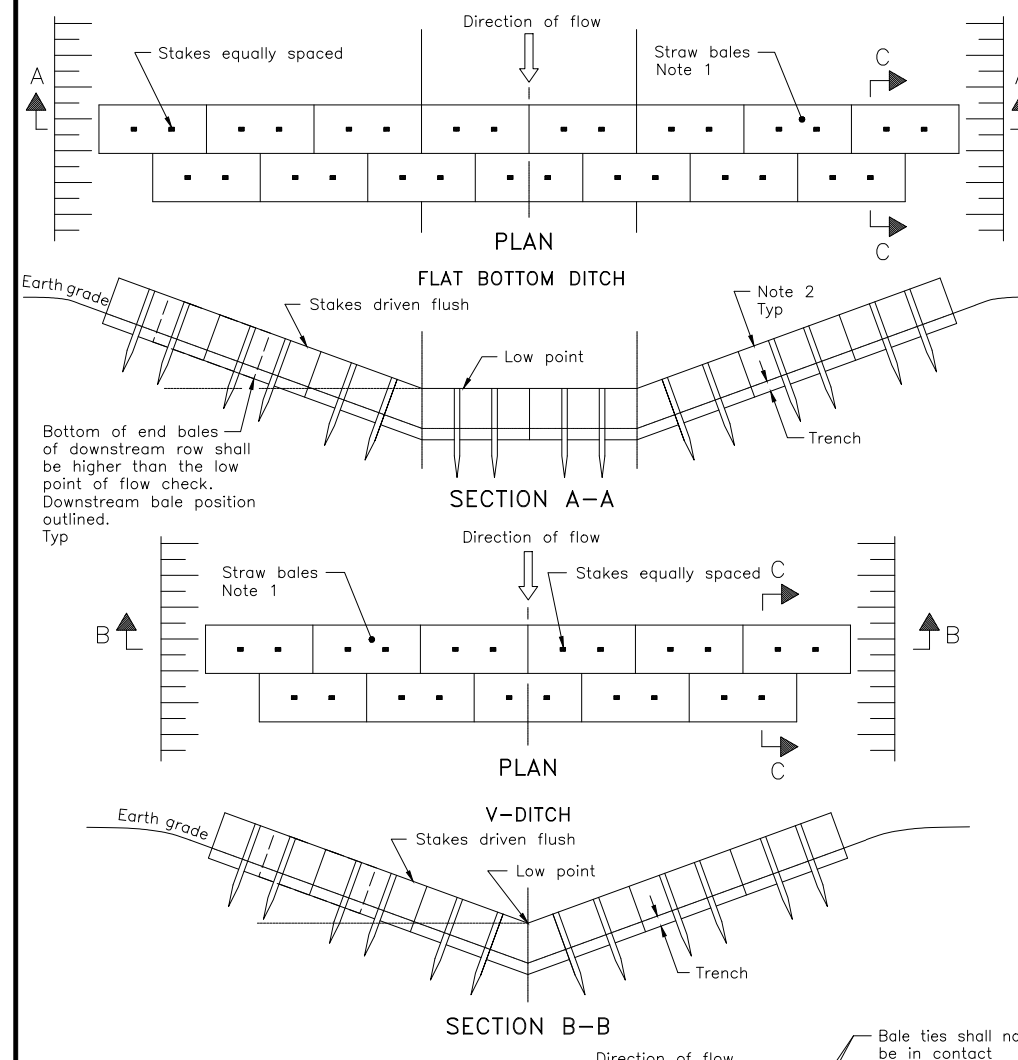
ARCADIS
 333 Preston Street - Suite 500
 Ottawa ON K1S 5N4 Canada
 tel 613 225 1311
 www.arcadis.com

PROJECT 4624 SPRATT ROAD	
PROJECT NO: 30260954	
DRAWN BY: EH/DD	CHECKED BY: A.S.
PROJECT MGR: R.M.	APPROVED BY: R.M.
SHEET TITLE GENERAL PLAN OF SERVICES	
SHEET NUMBER C-001	ISSUE 1

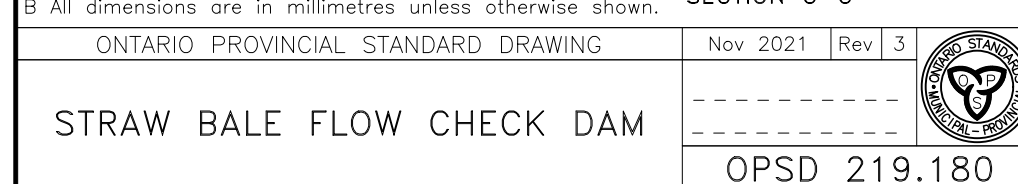
CITY PLAN No. 18727 CITY FILE No. D07-12-22-002



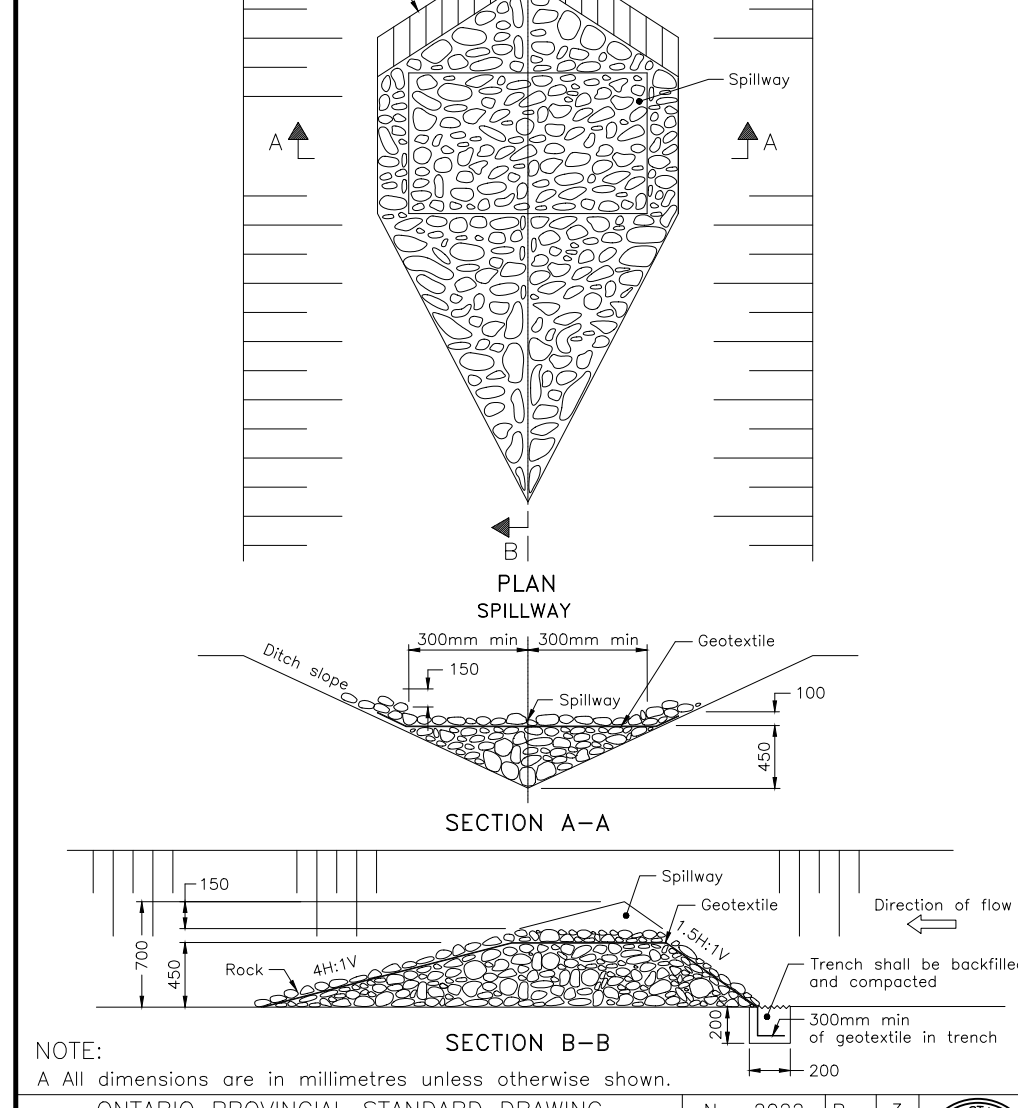
HEAVY-DUTY SILT FENCE BARRIER
OPSD 219.130



FLAT BOTTOM DITCH
SECTION A-A



V-DITCH
SECTION A-A



STRAW BALE FLOW CHECK DAM
SECTION A-A



NOTES:

- THE CONTRACTOR SHALL IMPLEMENT BEST MANAGEMENT PRACTICES, TO PROVIDE FOR PROTECTION OF THE AREA DRAINAGE SYSTEM AND THE RECEIVING WATERCOURSE, DURING CONSTRUCTION ACTIVITIES. THE CONTRACTOR ACKNOWLEDGES THAT FAILURE TO IMPLEMENT APPROPRIATE EROSION AND SEDIMENT CONTROL MEASURES MAY BE SUBJECT TO PENALTIES IMPOSED BY ANY APPLICABLE REGULATORY AGENCY.
- SILT FENCE TO BE ERRECTED PRIOR TO EARTH WORKS BEING COMMENCED. SILT FENCE TO BE MAINTAINED UNTIL VEGETATION IS ESTABLISHED OR UNTIL START OF SUBSEQUENT PHASE.
- STRAW BALE SEDIMENT TRAPS TO BE CONSTRUCTED IN EXISTING ROAD SIDE DITCHES. TRAPS TO REMAIN AND BE MAINTAINED UNTIL VEGETATION IS ESTABLISHED.
- FILTER CLOTH TO BE PLACED AND MAINTAINED UNDER COVER OF ALL PROPOSED CATCHBASINS AFTER BASE COURSE, AND EXISTING CATCHBASINS IDENTIFIED OUTSIDE OF CONSTRUCTION LIMIT. FILTER CLOTH IN STREET C/S TO REMAIN UNTIL ALL CURBS ARE CONSTRUCTED. FILTER CLOTH IN RYCB'S TO REMAIN UNTIL VEGETATION IS ESTABLISHED. ALL CATCHBASINS TO BE REGULARLY INSPECTED AND CLEANED AS NECESSARY. UNTIL SOD AND CURBS ARE CONSTRUCTED.
- CONTRACTOR TO PROVIDE DETAILS ON LOCATION(S) AND DESIGN OF DEWATERING TRAP(S) PRIOR TO COMMENCING WORK. CONTRACTOR ALSO RESPONSIBLE FOR MAINTAINING TRAP(S) AND ADJUSTING SIZE(S) IF DEEMED REQUIRED BY THE ENGINEER DURING CONSTRUCTION.
- WORKS NOTED ABOVE ARE TO BE INSTALLED, INSPECTED, MAINTAINED AND ULTIMATELY REMOVED BY SERVICING CONTRACTOR.
- THIS IS A "LIVING DOCUMENT" AND MAY BE MODIFIED IN THE EVENT THE PROPOSED CONTROL MEASURES ARE INSUFFICIENT.

LEGEND:

- HEAVY DUTY SILT FENCE AS PER OPSD-219.130
- SNOW FENCE
- STRAW BALE CHECK DAM AS PER OPSD-219.180
- ROCK CHECK DAM AS PER OPSD-219.210
- FILTER CLOTH PLACED UNDER EXISTING CB COVER
- TEMPORARY MUD MAT 0.15m THICK 50mm CLEAR STONE ON NON WOVEN FILTER CLOTH

CLIENT
CLARIDGE HOMES
210 Gladstone Ave, Ottawa, On K0P 0Y6

COPYRIGHT
This drawing has been prepared solely for the intended use, thus any reproduction or distribution for any purpose other than authorized by Arcadis is forbidden. Written dimensions shall have precedence over scaled dimensions. Contractors shall verify and be responsible for all dimensions and conditions on the job, and Arcadis shall be informed of any variations from the dimensions and conditions shown on the drawing. Shop drawings shall be submitted to Arcadis for general conformance before proceeding with fabrication.

Arcadis Professional Services (Canada) Inc.
Formerly IBI Group Professional Services (Canada) Inc.

ISSUES	No.	DESCRIPTION	DATE
5	SUBMISSION No.1 FOR ITY REVIEW	2026-03-30	
6			
7			
8			

CONSULTANTS

SEAL

ARCADIS
333 Preston Street - Suite 500
Ottawa ON K1S 5N4 Canada
tel 613 225 1311
www.arcadis.com

PROJECT
4624 SPRATT ROAD

PROJECT NO: 30260954

DRAWN BY: EH/DD

PROJECT MGR: R.M.

CHECKED BY: A.S.

APPROVED BY: R.M.

SHEET TITLE
EROSION - SEDIMENTATION PLAN

SHEET NUMBER C-900 **ISSUE** 1

CITY PLAN No. 18727 CITY FILE No. D07-12-22-002