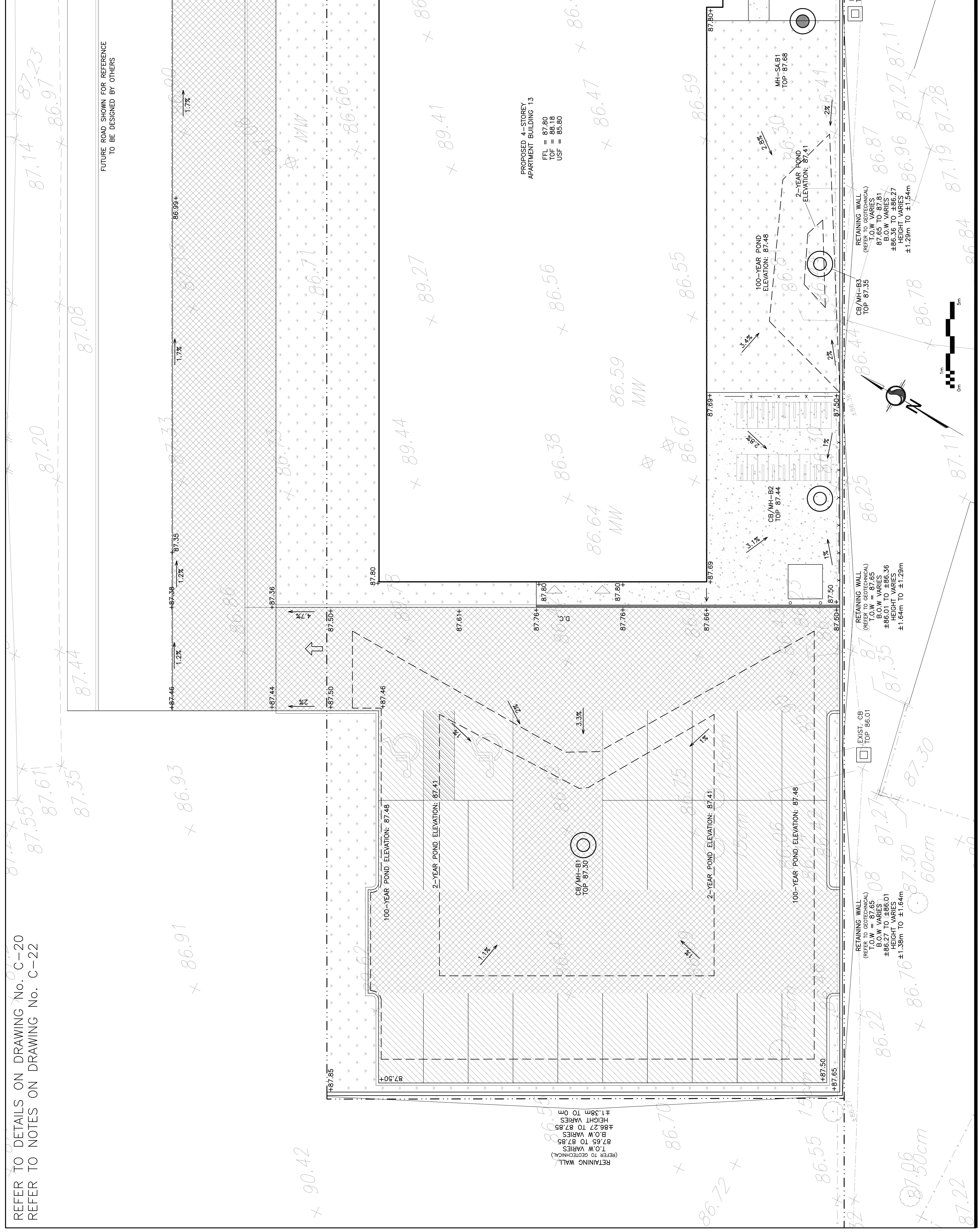


REFER TO DETAILS ON DRAWING No. C-20  
 REFER TO NOTES ON DRAWING No. C-22

FUTURE ROAD SHOWN FOR REFERENCE  
 TO BE DESIGNED BY OTHERS



KEY PLAN



**LEGEND**

- FEL FIRST FLOOR ELEVATION
- TOF TOP OF FOUNDATION
- USF UNDERSIDE OF FOOTING
- PROPERTY LINE
- CB CATCH BASIN
- CB/MH CATCH BASIN/MANHOLE
- MH SANITARY MANHOLE
- EXISTING GRADE ELEVATION
- PROPOSED GRADE ELEVATION
- PROPOSED SLOPE OF GRADE
- 150mm BARRIER CURB
- LIGHT-DUTY PAVEMENT
- HEAVY-DUTY PAVEMENT
- CONCRETE
- LANDSCAPE

No.	DATE	REVISION
2	MAR 5-26	ISSUED FOR APPROVAL
1	JAN 30-26	ISSUED FOR COORDINATION

**D. B. GRAY ENGINEERING INC.**  
 Professional Engineers  
 700 Long Point Circle  
 Ottawa, Ontario K1G 0R7  
 613-425-8044  
 d.gray@dbgrayengineering.com

**PROPOSED 4-STORY APARTMENT BUILDINGS**  
 1770 HEATHERINGTON ROAD  
 OTTAWA, ONTARIO

Drawing Title  
**GRADING PLAN**  
 (BUILDING 13 WEST)

Engineer's Seal  
  
 Drawn: D.B.G.  
 H. Scale: 1:100  
 V. Scale: 1:100  
 Date: JAN 30-26  
 Job No.: 24135  
 Drawing No.: C-15  
 of 22  
 NOT VALID UNLESS SIGNED & DATED