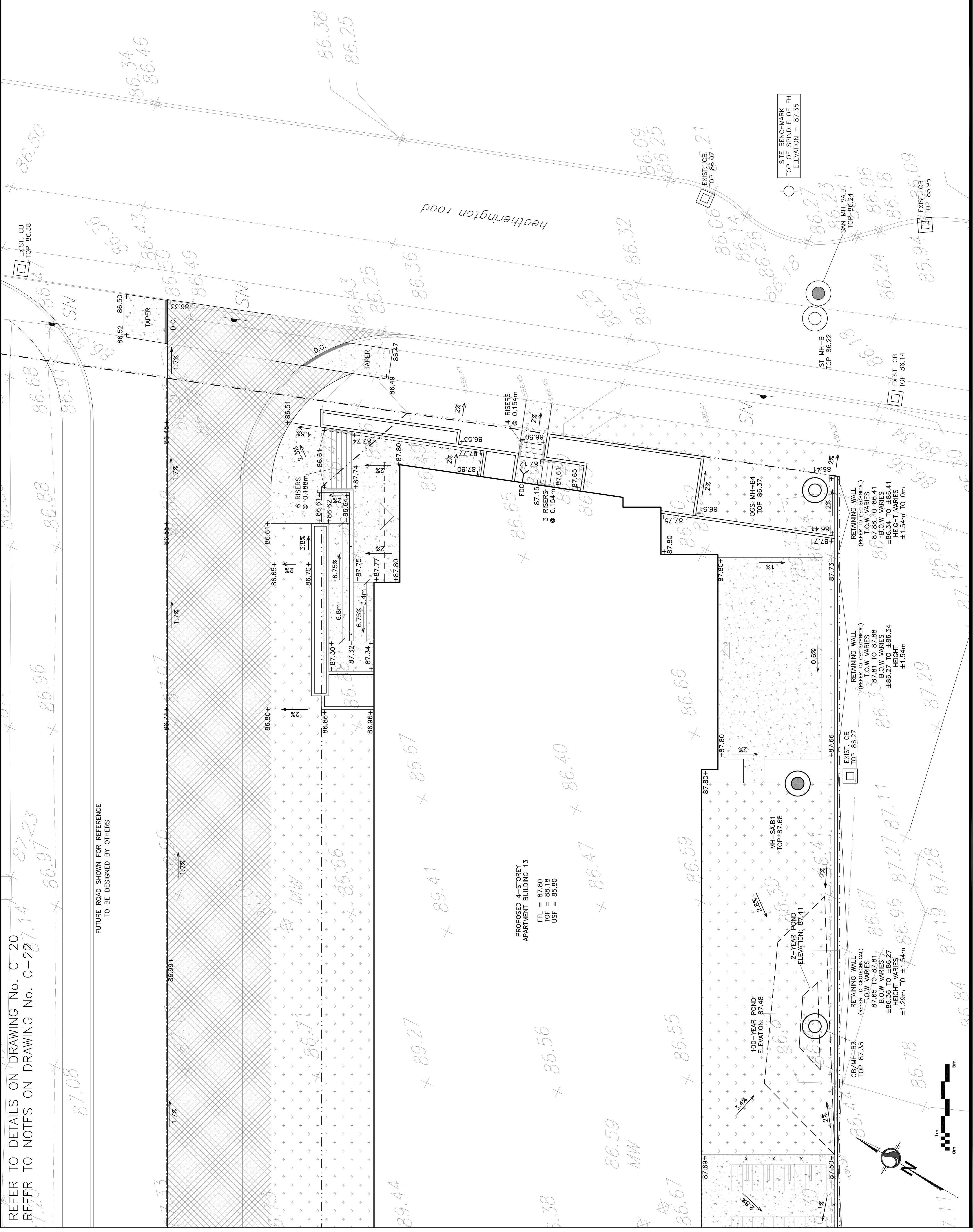


REFER TO DETAILS ON DRAWING No. C-20
 REFER TO NOTES ON DRAWING No. C-22

FUTURE ROAD SHOWN FOR REFERENCE
 TO BE DESIGNED BY OTHERS

PROPOSED 4-STORY
 APARTMENT BUILDING 13
 FFL = 87.80
 TOF = 88.18
 USF = 85.80



LEGEND

- FFL FIRST FLOOR ELEVATION
- TOF TOP OF FOUNDATION
- USF UNDERSIDE OF FOOTING
- PROPERTY LINE
- CB CATCH BASIN
- MH STORM MANHOLE
- CB/MH CATCH BASIN/MANHOLE
- MH SANITARY MANHOLE
- FH FIRE HYDRANT
- FDC FIRE DEPARTMENT CONNECTION
- EXISTING GRADE ELEVATION
- PROPOSED GRADE ELEVATION
- PROPOSED SLOPE OF GRADE
- 150mm BARRIER CURB
- D.C. DEPRESSED CURB
- LIGHT-DUTY PAVEMENT
- HEAVY-DUTY PAVEMENT
- CONCRETE
- LANDSCAPE

KEY PLAN

No.	DATE	REVISION
2	MAR 5-26	ISSUED FOR APPROVAL
1	JAN 30-26	ISSUED FOR COORDINATION

D. B. GRAY ENGINEERING INC.
 Structural Management - Consulting & Professional Services
 700 Long Point Circle
 Ottawa, Ontario
 D.Gray@dbgrayengineering.com
 613-425-8044

PROPOSED 4-STORY APARTMENT BUILDINGS
 1770 HEATHERINGTON ROAD
 OTTAWA, ONTARIO

GRADING PLAN
 (BUILDING 13 EAST)

Engineer's Seal
 D.B. GRAY
 MAR 3-26
 LICENSED PROFESSIONAL ENGINEER
 PROVINCE OF ONTARIO

Drawing No. **C-16**
 of **22**

NOT VALID UNLESS SIGNED & DATED