

1 UNDERGROUND PARKING P2  
ASB1 1:300



3 1st FLOOR  
ASB1 1:300



5 3rd FLOOR  
ASB1 1:300



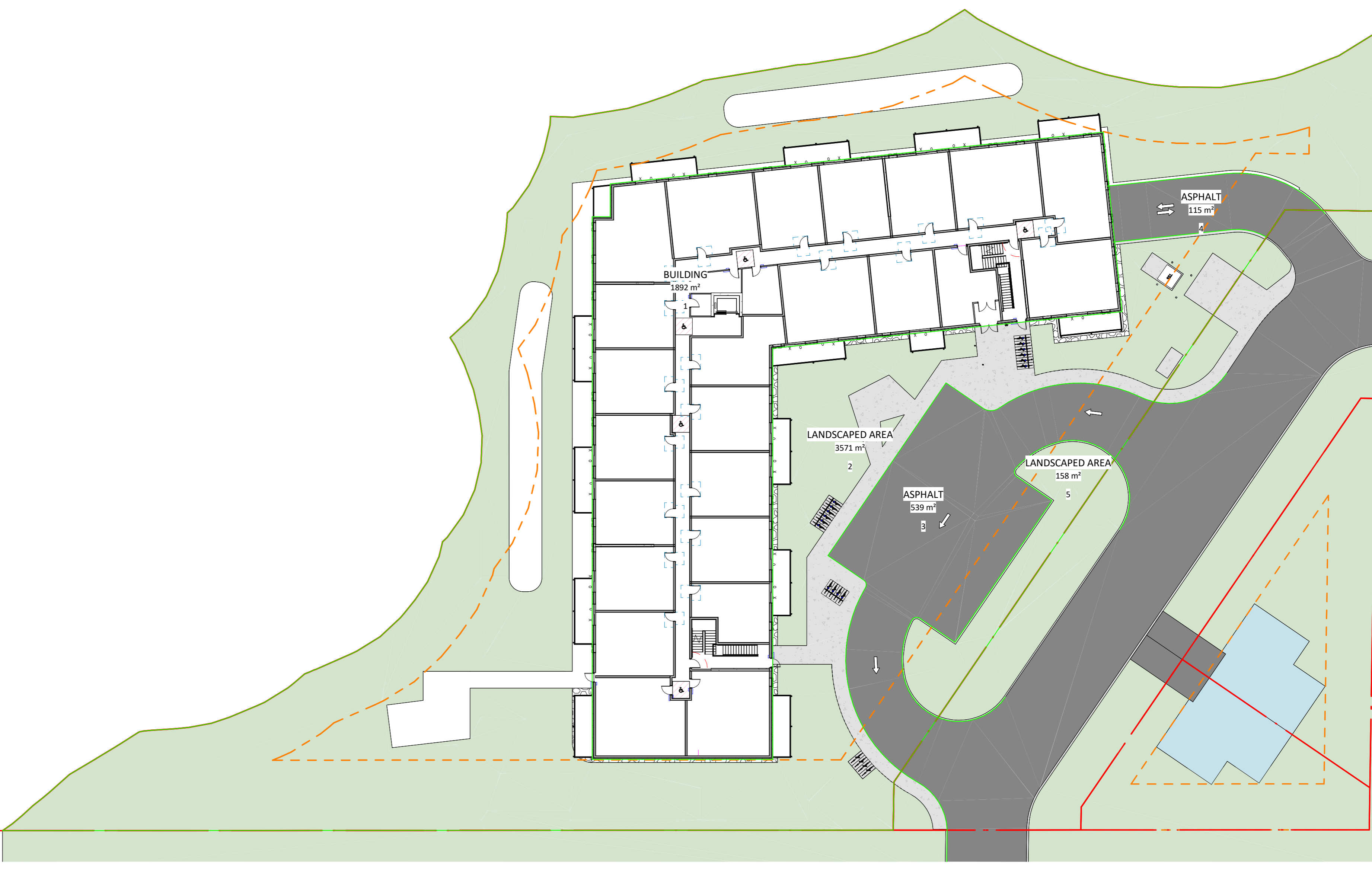
2 UNDERGROUND PARKING P1  
ASB1 1:300



4 2nd FLOOR  
ASB1 1:300



6 4th FLOOR  
ASB1 1:300



7 LANDSCAPE CALCULATION  
ASB1 1:300

PMA_PROFORMAT		
LEVEL	GROSS CONSTRUCTION (R²)	RENTABLE AREA (R²)
1st FLOOR	25 793	15 203
2nd FLOOR	22 469	17 917
3rd FLOOR	22 469	17 917
4th FLOOR	22 469	17 917
TOTAL	93 199	68 954

PMA_PROFORMAT PARKING		
LEVEL	GROSS CONSTRUCTION (R²)	
UNDERGROUND PARKING P2	23 412	
UNDERGROUND PARKING P1	23 412	
TOTAL	46 823	

PARKING SPACES			
LEVEL	QUANTITY	TYPE	PLAN ID
UNDERGROUND PARKING P1	1	RESIDENT PARKING	R
UNDERGROUND PARKING P2	1	RESIDENT PARKING	R
	2		

AMENITY AREA	
TYPE	AREA
AMENITY - PRIVATE	748 m²
AMENITY - SHARED EXTERIOR	341 m²
AMENITY - SHARED INTERIOR	171 m²

LANDSCAPED AREA		
NAME	SURFACE	%
ASPHALT	655 m²	40%
BUILDING	1892 m²	20%
LANDSCAPED AREA	3729 m²	40%
TOTAL	6276 m²	

UNITS TYPE AND AREA				
UNIT TYPE	QUANTITY	AVERAGE AREA (R²)	TOTAL AREA (R²)	DISTRIBUTION
1 BED	63	668	42 080	68%
2 BED	30	896	26 874	32%
	93	1 564	68 954	

RESIDENT			
LEVEL	QUANTITY	TYPE	PLAN ID
UNDERGROUND PARKING P1	45	RESIDENT PARKING	R
UNDERGROUND PARKING P1	1	ACCESSIBLE PARKING TYPE-A	TYPE-A
UNDERGROUND PARKING P1	1	ACCESSIBLE PARKING TYPE-B	TYPE-B
UNDERGROUND PARKING P2	57	RESIDENT PARKING	R
TOTAL	104		

GFA_CITY OF OTTAWA	
LEVEL	AREA
1st FLOOR	1 340 m²
2nd FLOOR	1 576 m²
3rd FLOOR	1 576 m²
4th FLOOR	1 576 m²
TOTAL	6 069 m²

BICYCLES PARKING SPACES			
LEVEL	TYPE	TOTAL	PLAN ID
1st FLOOR	HORIZONTAL / OUTDOOR	20	
UNDERGROUND PARKING P1	HORIZONTAL / INDOOR	46	
TOTAL		66	

PROJECT  
**WILDPINE DEVELOPMENT**

OWNER  
**LATITUDE**  
1302, CAMP ROAD, STITTSVILLE, ON K2S 1B9

ARCHITECTURAL  
**PMA ARCHITECTES**  
1310 661-8958  
INFO@PMAARCHITECTES.COM  
3070, CHEMIN DES QUATRE-SOUS-BOIS, QUÉBEC (Q.C.) G1W 3K4  
PMAARCHITECTES.COM

CIVIL  
**NOVATECH**  
Engineers, Planners & Landscape Architects  
NOVATECH  
240 MICHAEL COWPLAND DRIVE, SUITE 200, OTTAWA, ON K2M 1P6

PLANNING  
**FOTENN Planning + Design**  
386 Cooper Street, Suite 303, Ottawa, ON K1P 2H7  
613.730.5709  
www.fotenn.com

SURVEYOR  
**ANNIS, O'SULLIVAN, VOLLEBEK LTD.**  
14 CONCOURSE GATE, SUITE 500, NEPEAN, ON K2E 7J6

ENVIRONMENTAL CONSULTANT  
**Kilgour & Associates Ltd.**  
Environmental Consultants  
2285, ST-LAURENT BLVD, SUITE 16C, OTTAWA, ON K1G 4Z6

BUILDING SERVICES  
**M&E ENGINEERING**  
9 GURDWARA ROAD, UNIT 200, OTTAWA, ON K2E 7J6

STRUCTURAL  
**CIMA+**  
201-700, BOUL. DU CARREFOUR, GATINEAU, QC J8T 0R3

KEY PLAN

ARCHITECT SEAL  
**QUÉBEC ASSOCIATION OF ARCHITECTS**  
PIERRE MARTIN  
LICENCE

REVISIONS

NO	DESCRIPTION	DATE
1	ISSUE	2020-03-26

NOTE  
IT IS THE RESPONSIBILITY OF THE APPROPRIATE CONTRACTOR TO CHECK AND VERIFY ALL DIMENSIONS ON THE SITE AND TO REPORT ALL ERRORS AND/OR OMISSIONS TO THE ARCHITECT. ALL CONTRACTORS MUST COMPLY WITH ALL PERTINENT CODES AND BY-LAWS. DO NOT SCALE DRAWINGS.

THIS DOCUMENT AND ITS CONTENT IS COPYRIGHTED. ANY REPRODUCTION IS PROHIBITED UNLESS GRANTED BY THE ARCHITECT.

**DO NOT USE FOR CONSTRUCTION**

DATE	DESIGNED
2020-03-26	P.POMERLEAU

PROJECT No	CHECKED
21010	P.MARTIN

SHEET TITLE

STATISTICS

SHEET No  
**A003**

C:\Users\pomerleau\OneDrive - PMA Architectes\Documents\21010\_WILDPINE\_ARCH\_026\_pomerleau\W453.rvt



1202, CAMP ROAD, STITTSVILLE, ON K2S 1B9



1310 661-8958  
INFO@PMAARCHITECTES.COM  
3070, CHEMIN DES QUATRE-BOURGEOIS  
QUÉBEC (Q.C.) G1W 3K4  
PMAARCHITECTES.COM



Engineers, Planners & Landscape Architects  
NOVATECH  
240 MICHAEL COWPLAND DRIVE, SUITE 200,  
OTTAWA, ON K2M 1P6



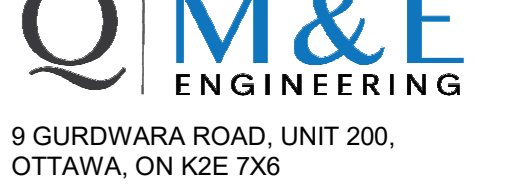
386 OGDON STREET, SUITE 303, OTTAWA, ON N6P 2H7  
613.730.5709 www.fotenn.com



ANNIS,  
O'SULLIVAN,  
VOLLEBEKK LTD.  
14 CONCOURSE GATE, SUITE 500,  
NEPEAN, ON K2E 7S6



ENVIRONMENTAL CONSULTANT  
Kilgour & Associates Ltd.  
Environmental Consultants  
2285, ST-LAURENT BLVD, SUITE 16C,  
OTTAWA, ON K1G 4Z6



M&E  
ENGINEERING  
9 GURDWARA ROAD, UNIT 200,  
OTTAWA, ON K2E 7X6



CIM+  
201-700, BOUL. DU CARREFOUR,  
GATINEAU, QC J8T 0R5

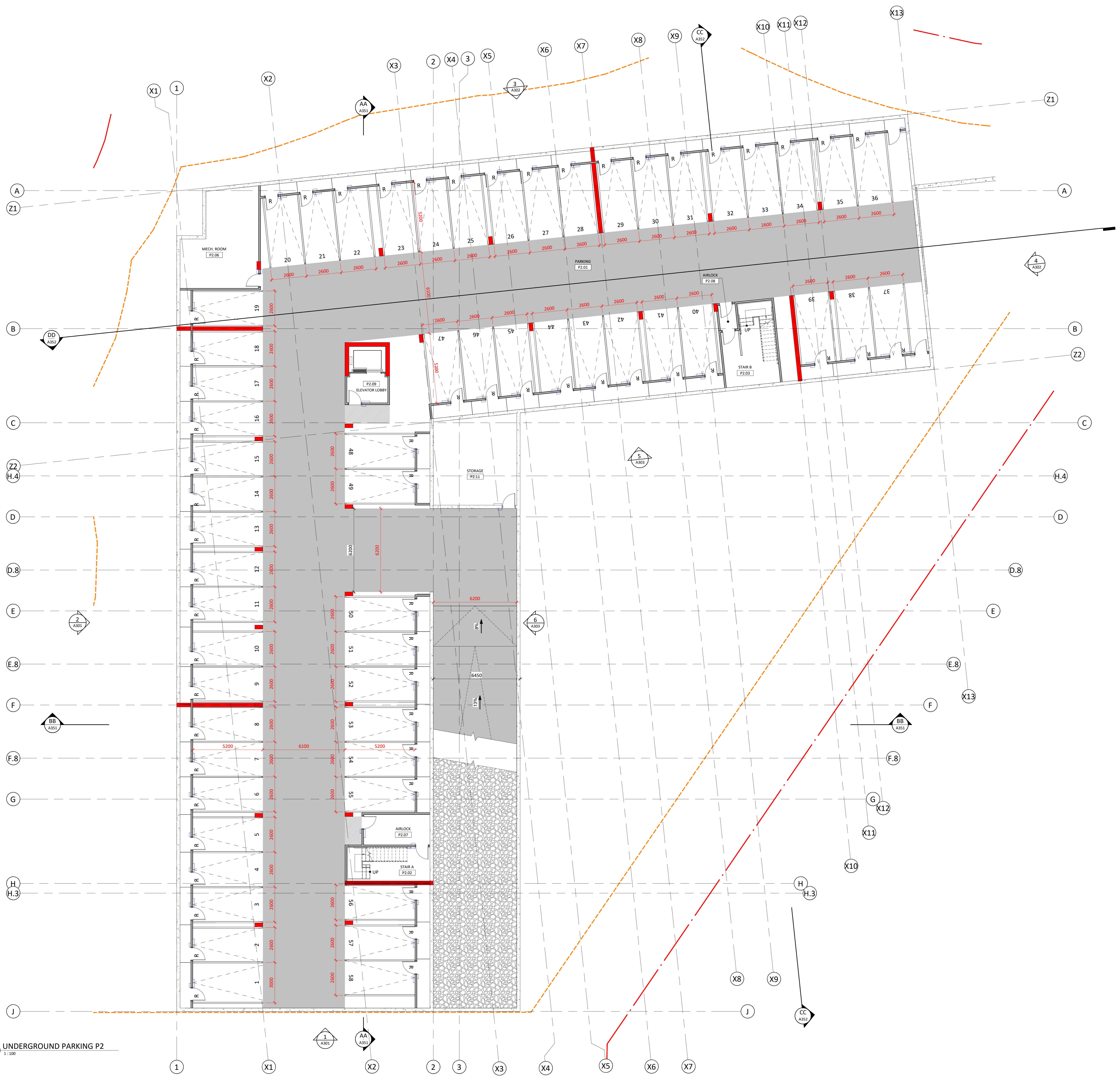


NO	DATE	DESCRIPTION	DATE
1	2026-03-26		

IT IS THE RESPONSIBILITY OF THE APPROPRIATE CONTRACTOR TO CHECK AND VERIFY ALL DIMENSIONS ON THE SITE AND TO REPORT ALL ERRORS AND/OR OMISSIONS TO THE ARCHITECT. ALL CONTRACTORS MUST COMPLY WITH ALL PERTINENT CODES AND BY-LAWS. DO NOT SCALE DRAWINGS.

**DO NOT USE FOR CONSTRUCTION**

DATE 2026-03-26	DESIGNED P.POMERLEAU 0787
PROJECT No 21010	DRAWN N.DUFFRESNE
	CHECKED P.MARTIN
SHEET TITLE UNDERGROUND PARKING P2	



1 UNDERGROUND PARKING P2  
1:100

C:\Users\pomerleau\OneDrive - PMA Architectes\Documents\21010\_WILDPINE\_ARCHT\_R26\_pomerleau\W453.rvt



1202, CAMP ROAD, STITTSVILLE, ON K2S 1B9



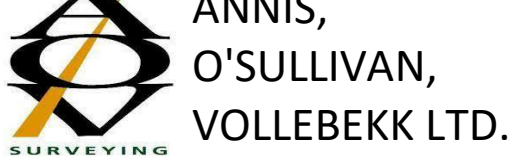
1310 661-8958  
INFO@PMAARCHITECTES.COM  
3070, CHEMIN DES QUATRE-SOURCES  
QUÉBEC H0C 1G9 (11th 3rd)  
PMAARCHITECTES.COM



NOVATECH  
240 MICHAEL COWPLAND DRIVE, SUITE 200,  
OTTAWA, ON K2M 1P6



386 OGDON STREET, SUITE 303, OTTAWA, ON K0P 2H7  
613.730.5709 www.fotenn.com



14 CONCOURSE GATE, SUITE 500,  
NEPEAN, ON K2E 7S6



2285, ST-LAURENT BLVD, SUITE 16C,  
OTTAWA, ON K1G 4Z6



9 GURDWARA ROAD, UNIT 200,  
OTTAWA, ON K2E 7X6



201-700, BOUL. DU CARREFOUR,  
GATINEAU, QC J8T 0Y5

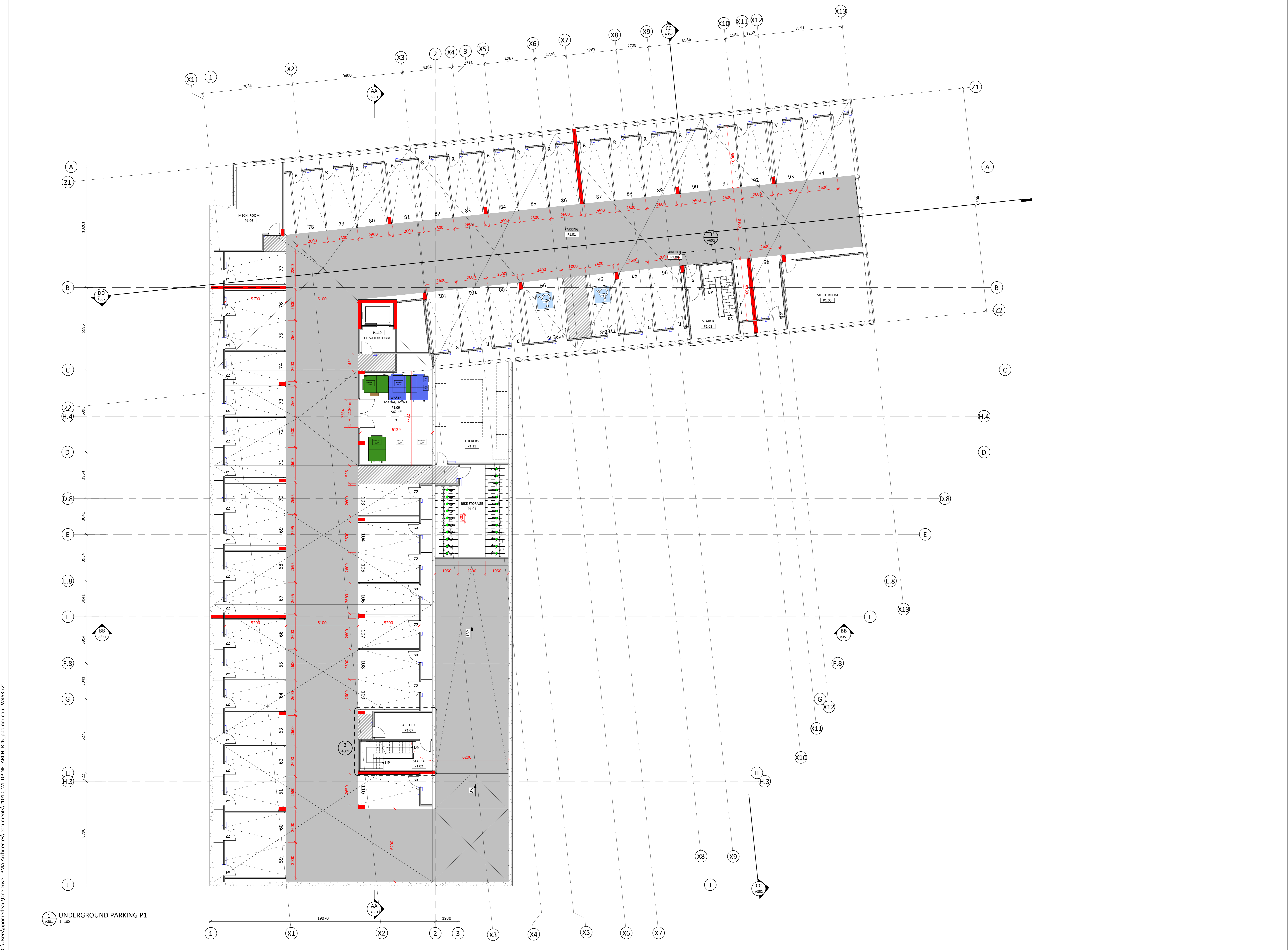


NO	DATE	DESCRIPTION	DATE

IT IS THE RESPONSIBILITY OF THE APPROPRIATE CONTRACTOR TO CHECK AND VERIFY ALL DIMENSIONS ON THE SITE AND TO REPORT ALL ERRORS AND/OR OMISSIONS TO THE ARCHITECT. ALL CONTRACTORS MUST COMPLY WITH ALL PERTINENT CODES AND BY-LAWS. DO NOT SCALE DRAWINGS.

**DO NOT USE FOR CONSTRUCTION**

DATE 2026-03-26	DESIGNED P.POMERLEAU
PROJECT No 21010	CHECKED P.MARTIN
	DRAWN N.DUFFRESNE
	SHEET TITLE UNDERGROUND PARKING P1



C:\Users\pomerleau\OneDrive - PMA Architectes\Documents\21010\_WILDPINE\_ARCHI\_R26\_pomerleau\W453.rvt



1202, CAMP ROAD, STITTSVILLE, ON K2S 1B9



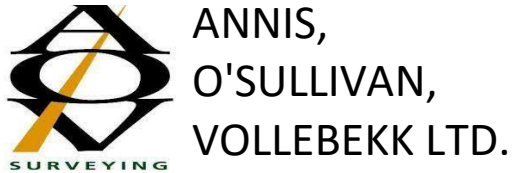
1310 661-9916  
INFO@PMAARCHITECTES.COM  
3070, CHEMIN DES QUATRE-BORDEURS  
QUÉBEC H0C 1G0 | 11W 3K4  
PMAARCHITECTES.COM



Engineers, Planners & Landscape Architects  
NOVATECH  
240 MICHAEL COWPLAND DRIVE, SUITE 200,  
OTTAWA, ON K2M 1P6



386 Cooper Street, Suite 303, Ottawa, ON K1P 2H7  
613.730.5709 www.fotenn.com



14 CONCOURSE GATE, SUITE 500,  
NEPEAN, ON K2E 7K6



2285 ST-LAURENT BLVD, SUITE 16C,  
OTTAWA, ON K1G 4Z6



9 GURDWARA ROAD, UNIT 200,  
OTTAWA, ON K2E 7X6



201-700, BOUL. DU CARREFOUR,  
GATINEAU, QC J8T 0Y5



NO	DESCRIPTION	DATE

IT IS THE RESPONSIBILITY OF THE APPROPRIATE CONTRACTOR TO CHECK AND VERIFY ALL DIMENSIONS ON THE SITE AND TO REPORT ALL ERRORS AND/OR OMISSIONS TO THE ARCHITECT. ALL CONTRACTORS MUST COMPLY WITH ALL PERTINENT CODES AND BY-LAWS. DO NOT SCALE DRAWINGS.  
THIS DOCUMENT AND ITS CONTENT IS COPYRIGHTED. ANY REPRODUCTION IS PROHIBITED UNLESS GRANTED BY THE ARCHITECT.

**DO NOT USE FOR CONSTRUCTION**

DATE 2026-03-26	DESIGNED P.POMERLEAU
PROJECT No 21010	DRAWN N.DUFFRESNE
	CHECKED P.MARTIN
	SHEET TITLE

1st FLOOR

C:\Users\pomerleau\OneDrive - PMA Architectes\Documents\21010\_WILDPINE\_ARCHT\_R26\_pomerleau\W453.rvt



1 1st FLOOR  
1:100



1202, CAMP ROAD, STITTSVILLE, ON K2S 1B9



1310 661-9916  
INFO@PMAARCHITECTES.COM  
3070, CHEMIN DES QUATRE-BOULEVARS  
QUÉBEC Q1C 1W 3K4  
PMAARCHITECTES.COM



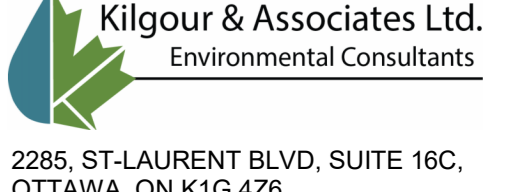
NOVATECH  
240 MICHAEL COWPLAND DRIVE, SUITE 200,  
OTTAWA, ON K2M 1P6



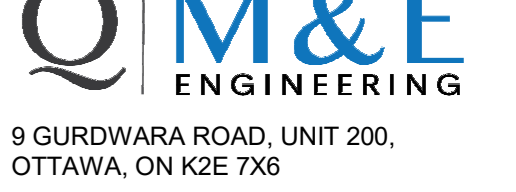
FOTENN  
386 OGDON STREET, SUITE 303, OTTAWA, ON K1P 2H7  
613.730.5709 www.fotenn.com



ANNIS,  
O'SULLIVAN,  
VOLLEBEK LTD.  
14 CONCOURSE GATE, SUITE 500,  
NEPEAN, ON K2E 7S6



Kilgour & Associates Ltd.  
Environmental Consultants  
2285, ST-LAURENT BLVD, SUITE 16C,  
OTTAWA, ON K1G 4Z6



M&E  
ENGINEERING  
9 GURDWARA ROAD, UNIT 200,  
OTTAWA, ON K2E 7X6



CIM+  
201-700, BOUL. DU CARREFOUR,  
GATINEAU, QC J8T 0R5



NO	DESCRIPTION	DATE

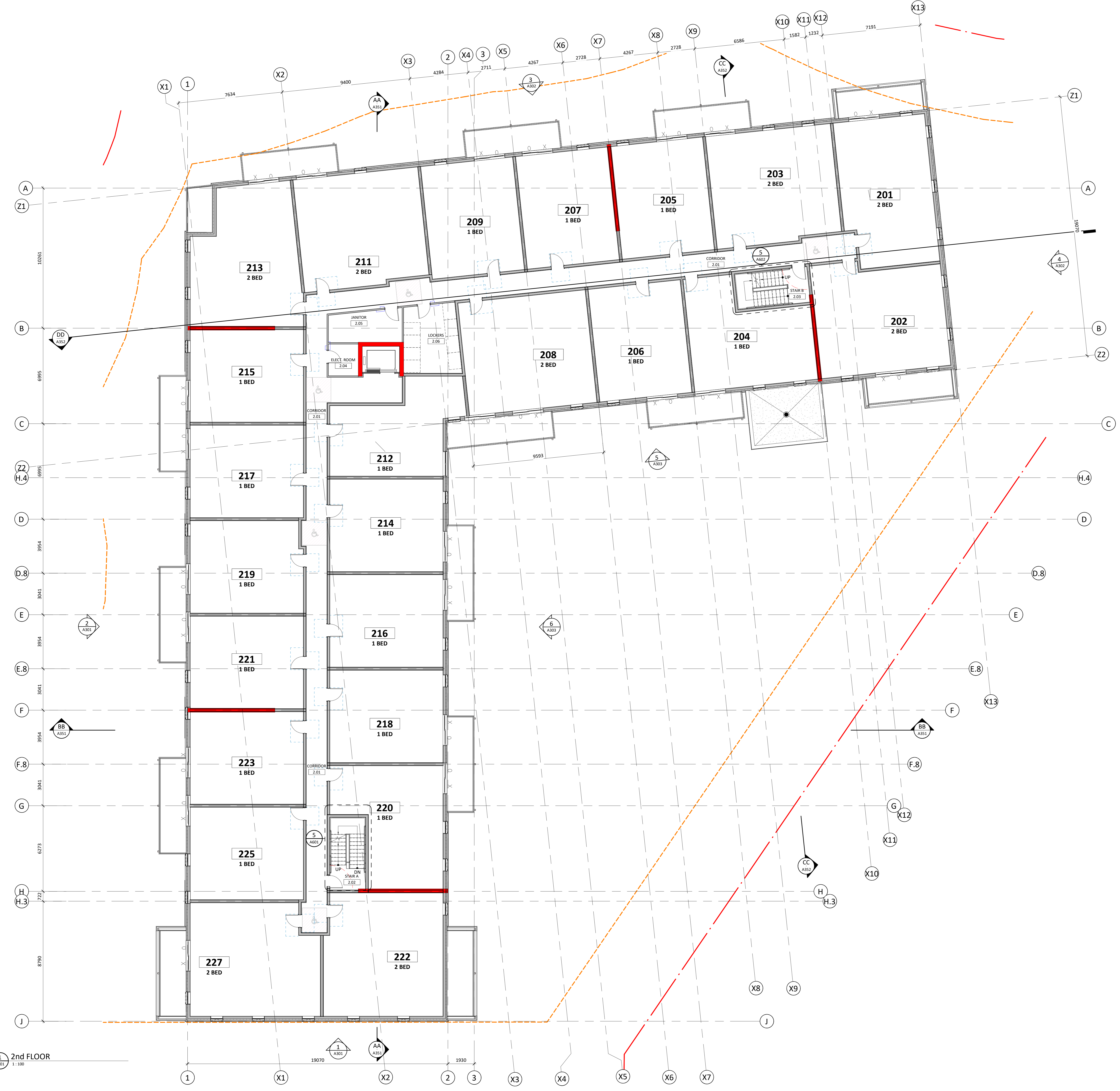
IT IS THE RESPONSIBILITY OF THE APPROPRIATE CONTRACTOR TO CHECK AND VERIFY ALL DIMENSIONS ON THE SITE AND TO REPORT ALL ERRORS AND/OR OMISSIONS TO THE ARCHITECT. ALL CONTRACTORS MUST COMPLY WITH ALL PERTINENT CODES AND BY-LAWS. DO NOT SCALE DRAWINGS.

THIS DOCUMENT AND ITS CONTENT IS COPYRIGHTED. ANY REPRODUCTION IS PROHIBITED UNLESS GRANTED BY THE ARCHITECT.

**DO NOT USE FOR CONSTRUCTION**

DATE 2026-03-26	DESIGNED P.POMERLEAU
PROJECT No 21010	DRAWN N.DUFFRESNE
	CHECKED P.MARTIN
	SHEET TITLE

2nd FLOOR



C:\Users\pomerleau\OneDrive - PMA Architectes\Documents\21010\_WILDPINE\_ARCH\206\_pomerleau\W453.rvt



1202, CAMP ROAD, STITTSVILLE, ON K2S 1B9



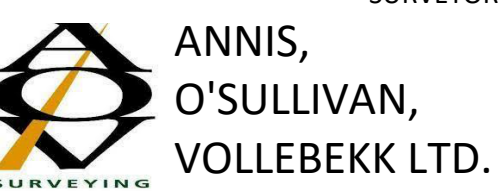
1310 661-9916  
INFO@PMAARCHITECTES.COM  
3070, CHEMIN DES QUATRE-BORDEURS  
QUÉBEC H0C 1G0 | 11W 3K4  
PMAARCHITECTES.COM



NOVATECH  
240 MICHAEL COWPLAND DRIVE, SUITE 200,  
OTTAWA, ON K2M 1P6



386 OGDON STREET, SUITE 303, OTTAWA, ON K1P 2H7  
613.730.5709 www.fotenn.com



14 CONCOURSE GATE, SUITE 500,  
NEPEAN, ON K2E 7S6



2285, ST-LAURENT BLVD, SUITE 16C,  
OTTAWA, ON K1G 4Z6



9 GURDWARA ROAD, UNIT 200,  
OTTAWA, ON K2E 7X6



201-700, BOUL. DU CARREFOUR,  
GATINEAU, QC J8T 0Y5



NO	DESCRIPTION	DATE

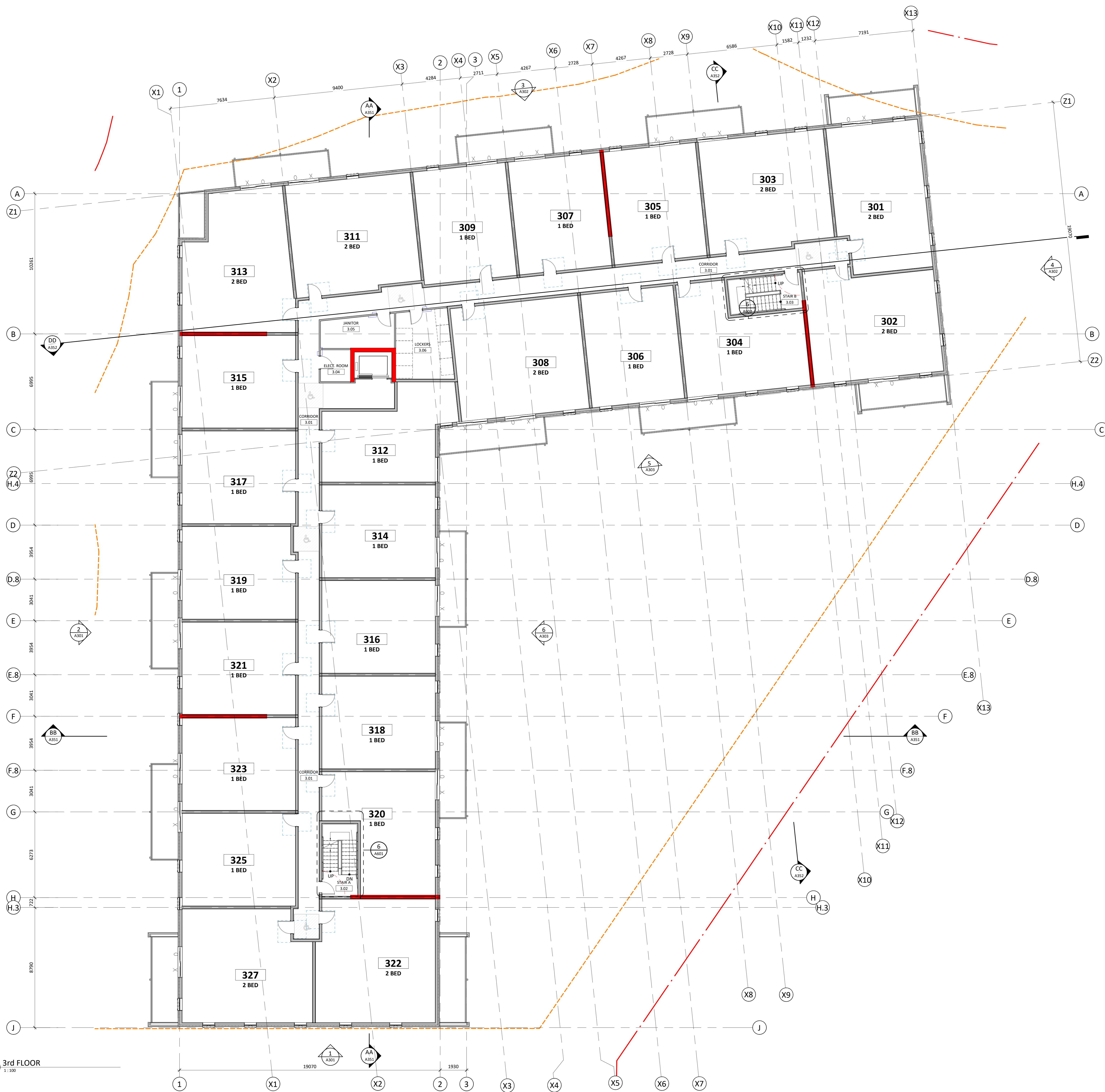
IT IS THE RESPONSIBILITY OF THE APPROPRIATE CONTRACTOR TO CHECK AND VERIFY ALL DIMENSIONS ON THE SITE AND TO REPORT ALL ERRORS AND/OR OMISSIONS TO THE ARCHITECT. ALL CONTRACTORS MUST COMPLY WITH ALL PERTINENT CODES AND BY-LAWS. DO NOT SCALE DRAWINGS.

THIS DOCUMENT AND ITS CONTENT IS COPYRIGHTED. ANY REPRODUCTION IS PROHIBITED UNLESS GRANTED BY THE ARCHITECT.

**DO NOT USE FOR CONSTRUCTION**

DATE 2026-03-26	DESIGNED P.POMERLEAU
PROJECT No 21010	DRAWN N.DUFFRESNE
	CHECKED P.MARTIN
	SHEET TITLE

3rd FLOOR



C:\Users\pomerleau\OneDrive - PMA Architectes\Documents\21010\_WILDPINE\_ARCHT\_R26\_pomerleau\W453.rvt



1202, CAMP ROAD, STITTSVILLE, ON K2S 1B9



1310 661-9916  
INFO@PMAARCHITECTES.COM  
3070, CHEMIN DES QUATRE-BOURGEOIS  
QUÉBEC Q1C 1W 3K4  
PMAARCHITECTES.COM



NOVATECH  
240 MICHAEL COWPLAND DRIVE, SUITE 200,  
OTTAWA, ON K2M 1P6



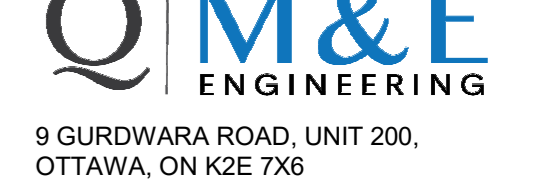
386 OGDON STREET, SUITE 303, OTTAWA, ON K1P 2H7  
613.730.5709 www.fotenn.com



14 CONCOURSE GATE, SUITE 500,  
NEPEAN, ON K2E 7S6



2285, ST-LAURENT BLVD, SUITE 16C,  
OTTAWA, ON K1G 4Z6



9 GURDWARA ROAD, UNIT 200,  
OTTAWA, ON K2E 7X6



201-700, BOUL. DU CARREFOUR,  
GATINEAU, QC J8T 0Y5



NO	DESCRIPTION	DATE
1	ISSUE FOR PERMIT	2020-03-26

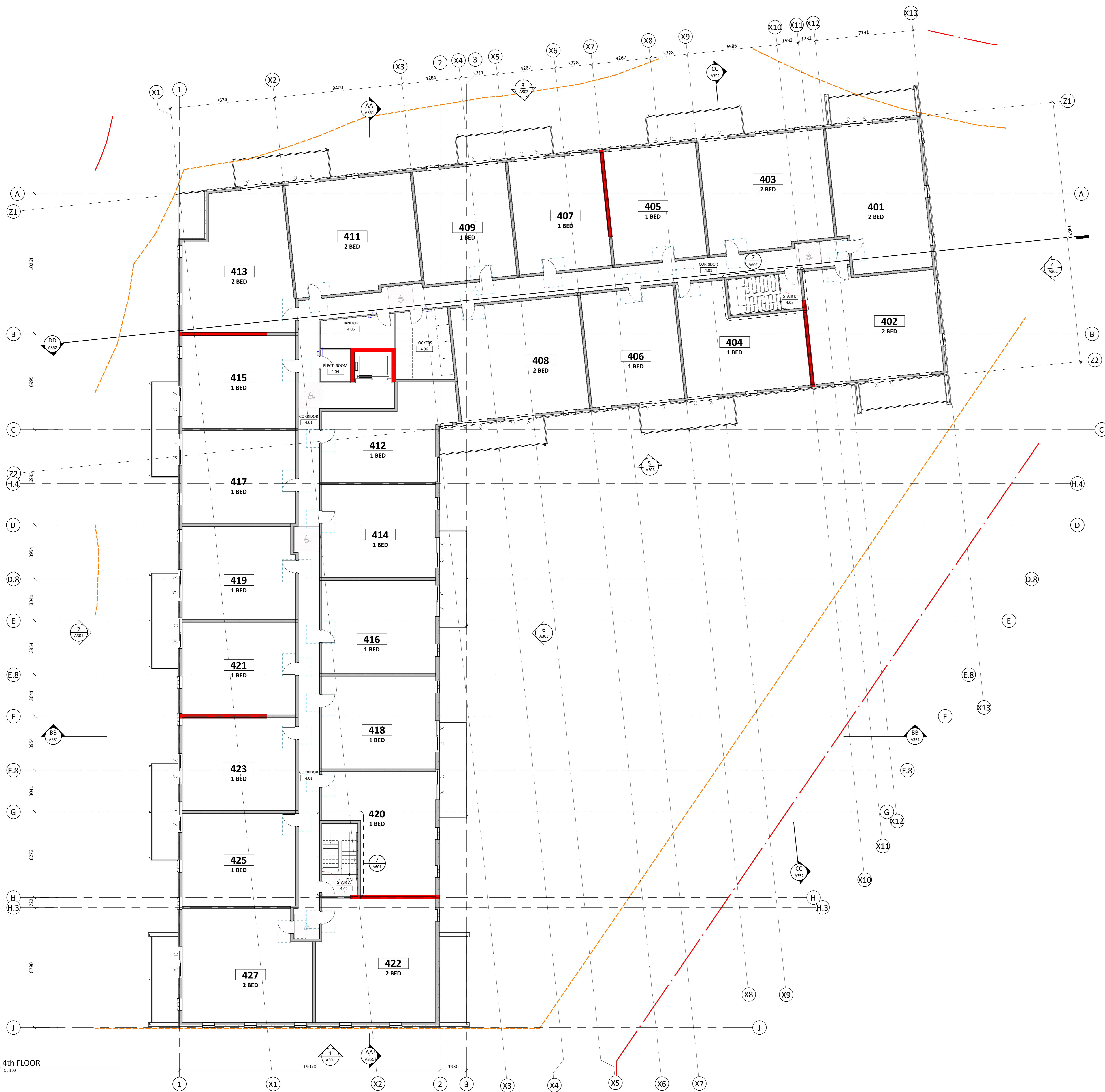
IT IS THE RESPONSIBILITY OF THE APPROPRIATE CONTRACTOR TO CHECK AND VERIFY ALL DIMENSIONS ON THE SITE AND TO REPORT ALL ERRORS AND/OR OMISSIONS TO THE ARCHITECT. ALL CONTRACTORS MUST COMPLY WITH ALL PERTINENT CODES AND BY-LAWS. DO NOT SCALE DRAWINGS.

THIS DOCUMENT AND ITS CONTENT IS COPYRIGHTED. ANY REPRODUCTION IS PROHIBITED UNLESS GRANTED BY THE ARCHITECT.

**DO NOT USE FOR CONSTRUCTION**

DATE 2020-03-26	DESIGNED P.POMERLEAU
PROJECT No 21010	CHECKED P.MARTIN
	DRAWN N.DUFFRESNE
	SHEET TITLE

4th FLOOR



1 4th FLOOR  
1:100

C:\Users\pomerleau\OneDrive - PMA Architectes\Documents\21010\_WILDPINE\_ARCH\B26\_pomerleau\W453.rvt



1202, CAMP ROAD, STITTSVILLE, ON K2S 1B9



1310 651-8958  
INFO@PMAARCHITECTES.COM  
3070, CHEMIN DES QUATRE-BOURGEOIS  
QUÉBEC H0C 1G0 | 11W 3K4  
PMAARCHITECTES.COM



NOVATECH  
240 MICHAEL COWPLAND DRIVE, SUITE 200,  
OTTAWA, ON K2M 1P6



FOTENN  
386 OGDON STREET, SUITE 303, OTTAWA, ON K0P 2H7  
613.730.5709 www.fotenn.com



ANNIS,  
O'SULLIVAN,  
VOLLEBEKK LTD.  
14 CONCOURSE GATE, SUITE 500,  
NEPEAN, ON K2E 7S6



Kilgour & Associates Ltd.  
Environmental Consultants  
2285 ST-LAURENT BLVD, SUITE 16C,  
OTTAWA, ON K1G 4Z6



M&E  
ENGINEERING  
9 GURDWARA ROAD, UNIT 200,  
OTTAWA, ON K2E 7X6



CIM+  
201-700, BOUL. DU CARREFOUR,  
GATINEAU, QC J8T 0R5



NO	DESCRIPTION	DATE

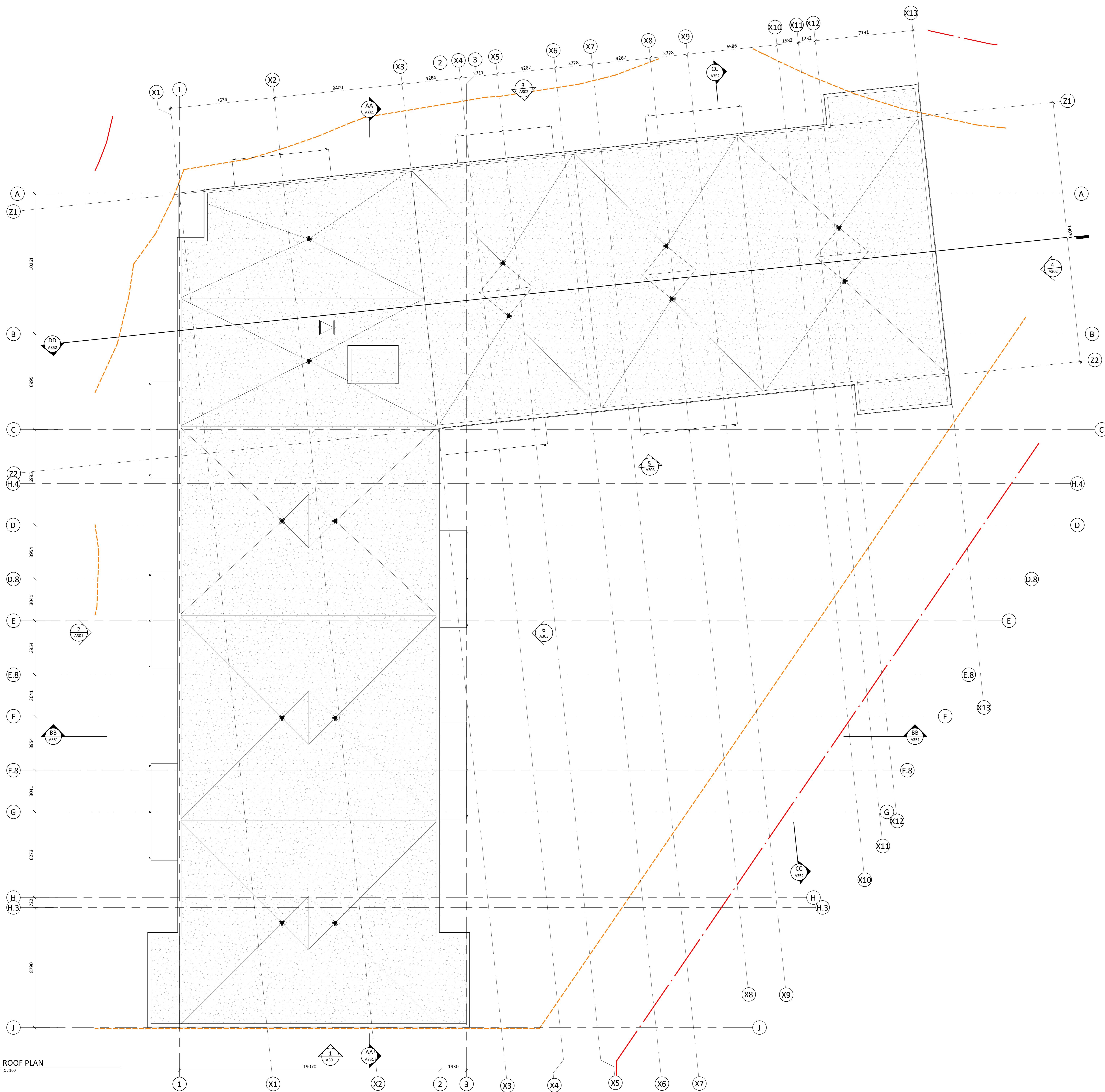
IT IS THE RESPONSIBILITY OF THE APPROPRIATE CONTRACTOR TO CHECK AND VERIFY ALL DIMENSIONS ON THE SITE AND TO REPORT ALL ERRORS AND/OR OMISSIONS TO THE ARCHITECT. ALL CONTRACTORS MUST COMPLY WITH ALL PERTINENT CODES AND BY-LAWS. DO NOT SCALE DRAWINGS.

THIS DOCUMENT AND ITS CONTENT IS COPYRIGHTED. ANY REPRODUCTION IS PROHIBITED UNLESS GRANTED BY THE ARCHITECT.

**DO NOT USE FOR CONSTRUCTION**

DATE 2026-03-26	DESIGNED P.POMERLEAU
PROJECT No 21010	DRAWN N.DUFFRESNE
	CHECKED P.MARTIN

SHEET TITLE  
**ROOF PLAN**



1 ROOF PLAN  
1:100

C:\Users\pomerleau\OneDrive - PMA Architectes\Documents\21010\_WILDPINE\_ARCHT\_R26\_pomerleau\W453.rvt