

**LEGEND**

- PROPERTY LIMIT
- SEED - GREENFIELDS BY PICKSEED OR APPROVED EQUIVALENT
- PROPOSED DECIDUOUS TREE
- TREE PROTECTION FENCE

**PLANTING**

1. Plant material to be No. 1 Grade and is to comply with Canadian Standards for Nursery Stock (latest edition) published by the Canadian Nursery Landscape Association.
2. Use structurally sound plant material with strong fibrous root system free of disease, defects, and injuries. Use trees with straight trunks, well and characteristically branched for species. Obtain approval from consultant of plant material at source prior to digging. All trees and shrubs to be container grown, potted, W/B or B/B, as indicated on Plant List. Bare root plants are only acceptable for certain species and as approved by the Landscape Architect.
3. Plant material substitutions are not permitted without the written approval from the Consultant, with 48 hours notice, prior to shipping plant material.
4. Plant locations are schematic / approximate only. Contractor is to stake out locations on site for approval by the Landscape Architect prior to installation.
5. The illustrated number of plants shown in the Planting Plan supersedes the estimated number in the Plant List. Contractor to report any discrepancies to the Landscape Architect prior to installation. Contractor will assume full responsibility if the Landscape Architect is not notified.
6. Ensure trees are thoroughly watered following planting. Monitor material and ensure adequate moisture until acceptance.
7. In heavy clay or poorly drained soils, set root ball with root collar 75-100mm higher than finished grade.
8. Approved topsoil depths are as follows:
  - a. Plant Beds - 450mm continuous depth. Applies to shrubs, perennials, vines, and groundcovers.
  - b. Seed Areas - 100mm depth.
  - c. Reforestation - 300mm depth.
9. Sod to be No. 1 Kentucky Bluegrass Sod grown from minimum mixture of 3 Kentucky Bluegrass cultivars. Quality and source are to comply with Canadian Standards for Nursery Stock, Section 17, (latest edition) published by the Canadian Nursery Landscape Association.
10. Apply the following mineral fertilizer unless soil tests show other requirements:
  - a. Plant Beds - (8-32-16), i.e. 8% Nitrogen, 32% Phosphorus, 16% Potash per manufacturer specifications.
  - b. Sod Areas - (8-32-16), i.e. 8% Nitrogen, 32% Phosphorus, 16% Potash at a rate of 350g/m<sup>2</sup>.
12. Where applicable, for any plant areas with a mix of species/cultivars notes, Contractor is to cluster like plants in groups of 3-5 and evenly distribute these in the noted area.

**GENERAL**

1. Read and interpret this drawing/ drawing set in conjunction with all the contract details and specifications, including related civil, utility, structural, architectural, mechanical, electrical, environmental, geotechnical, and survey information.
2. The Contractor is to determine the exact location, size, material, and elevation of all existing utilities prior to commencing construction. Protect and assume responsibility for all existing utilities regardless of being shown on the drawings.
3. It is essential to use the plans and details in conjunction with the specifications and notes.
4. Do not scale drawings. Work to dimensions only.
5. Protect all existing and retained vegetation for the duration of construction according to the contract details and specifications.
6. Reinstatement all areas and items damaged or disturbed, beyond the Limit of Work, because of construction activities, including but not limited to construction staging areas, haul roads, stockpile areas, etc. to the satisfaction of the Consultant. Unless otherwise noted, Contractor is to reinstate all areas to pre-construction condition or better to the satisfaction of the Contract Administrator.

**PLANT LIST:**

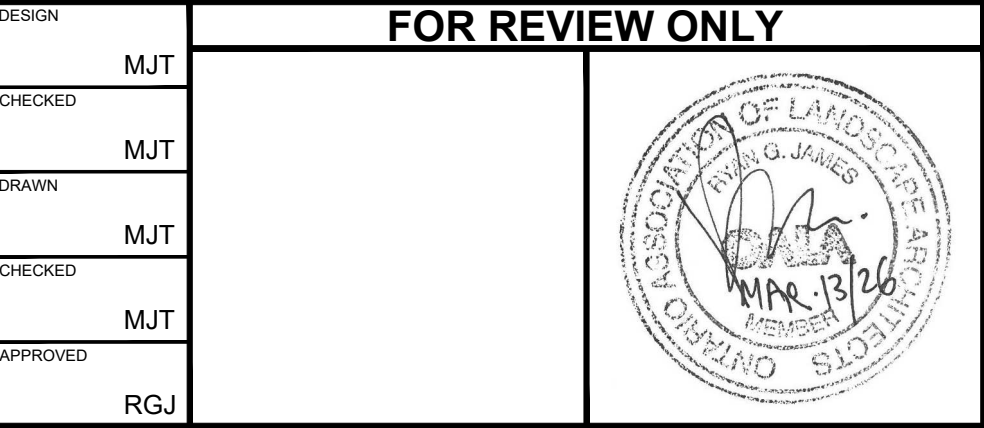
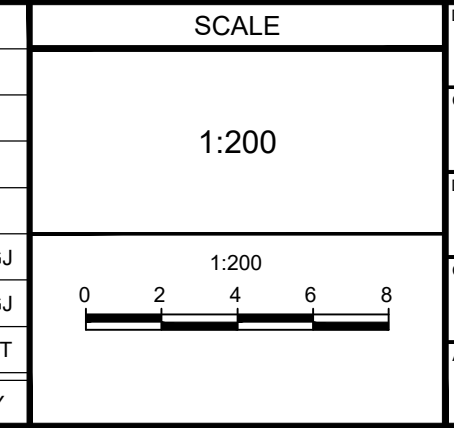
KEY	QTY	BOTANICAL NAME	COMMON NAME	SIZE	COND	SPACING	NATIVE
<b>Deciduous Trees:</b>							
GTS	3	<i>Gleditsia triacanthos var. inermis</i> 'Shademaster'	Shademaster Honeylocust	50mm Cal	WB	As Shown	Native
GM	2	<i>Quercus macrocarpa</i>	Burr Oak	50mm Cal	WB	As Shown	Native

REFER TO DETAILS ON SHEET L3

**NOTE:**  
THE POSITION OF ALL POLE LINES, CONDUITS, WATERMANS, SEWERS AND OTHER UNDERGROUND AND OVERGROUND UTILITIES AND STRUCTURES IS NOT NECESSARILY SHOWN ON THE CONTRACT DRAWINGS, AND WHERE SHOWN, THE ACCURACY OF THE POSITION OF SUCH UTILITIES AND STRUCTURES IS NOT GUARANTEED. BEFORE STARTING WORK, DETERMINE THE EXACT LOCATION OF ALL SUCH UTILITIES AND STRUCTURES AND ASSUME ALL LIABILITY FOR DAMAGE TO THEM.

No.	REVISION	DATE	BY
3	ISSUED FOR ROW DETAILED DESIGN AND SPC	MAR 13/26	RGJ
2	ISSUED FOR PLAN OF SUBDIVISION	FEB 19/26	RGJ
1	ISSUED FOR CLIENT REVIEW	SEP 30/25	MJT

DESIGN	FOR REVIEW ONLY
CHECKED: MJT	
DRAWN: MJT	
CHECKED: MJT	
APPROVED: RGJ	



**NOVATECH**  
Engineers, Planners & Landscape Architects  
Suite 200, 240 Michael Cowpland Drive  
Ottawa, Ontario, Canada K2M 1P6  
Telephone: (613) 254-9643  
Facsimile: (613) 254-5867  
Website: www.novatech-eng.com

LOCATION  
CITY OF OTTAWA  
37 WILDPINE COURT

DRAWING NAME  
LANDSCAPE PLAN - BLOCK 1

PROJECT No. 125077  
REV #3  
DRAWING No. 125077-L1

**DISCLAIMER:**  
The elements on this plan illustrate the design intent and general constructability of the proposed landscape which will support the associated development. This is to demonstrate how the canopy cover, urban design, health, and climate change objectives of the Official Plan will be met through tree planting and site design. This drawing is for City review only and is not intended for construction. Final detailed design and construction documentation is to be provided with certified/issued for construction drawings and specifications prior to construction.

**CITY DETAILS**

Related details from City of Ottawa Standard Tender Documents  
Volume No. 2 Standard Detail Drawings.

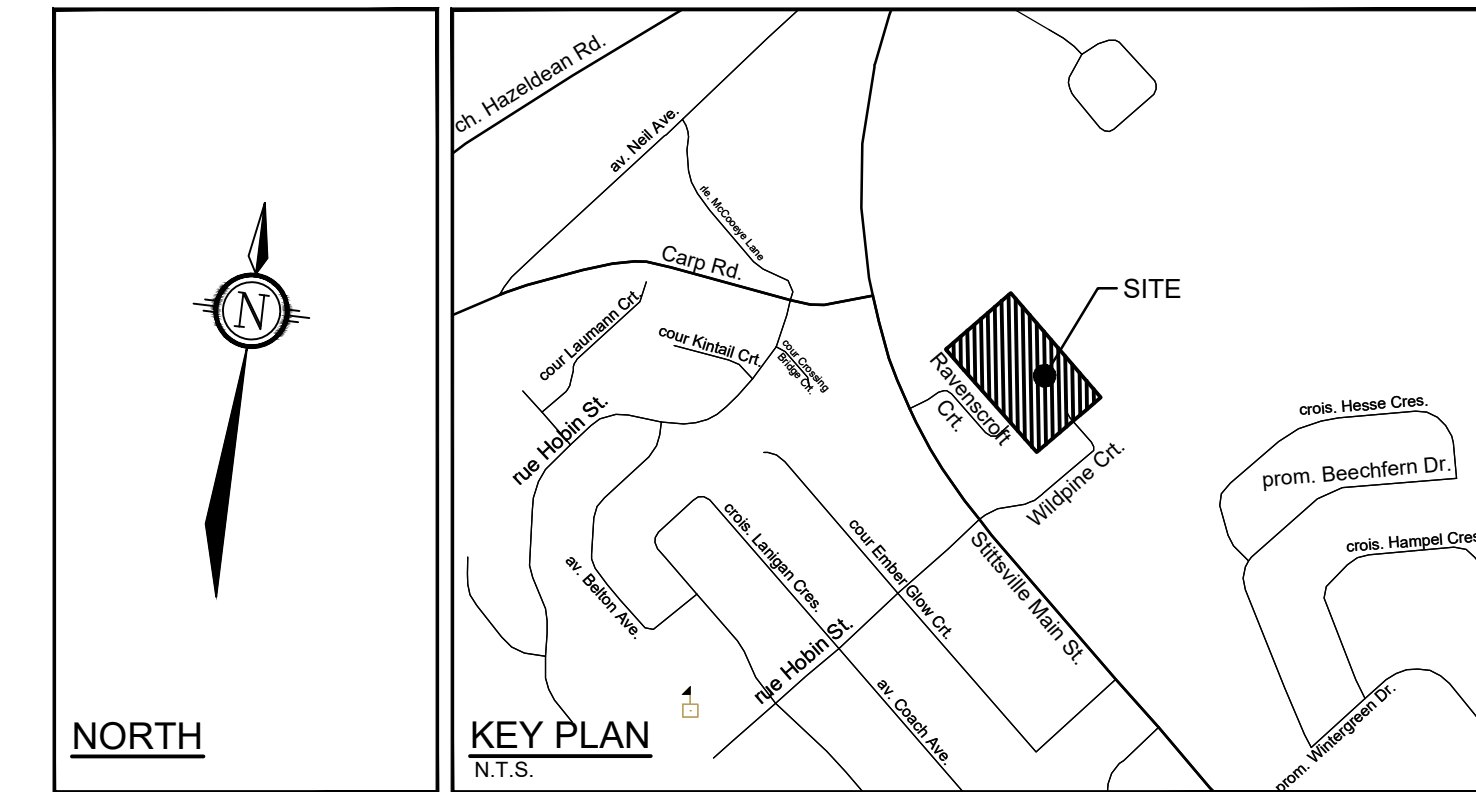
F9 Chain Link Fence

SC4 Typical Concrete Sidewalk in Boulevard  
SC5 Sidewalk Construction Joints

**NOVATECH DETAILS**

Found on Sheet L3.

D1 Standard Deciduous Tree Planting  
D2 Standard Coniferous Tree Planting  
D3 Shrub and Perennial Planting  
D4 Tree Protection Fence  
D5 Wood Screen Detail  
D6 Bike Layout



**LEGEND**

- PROPERTY LIMIT
- PROPOSED CONCRETE
- ▨ PROPOSED PAVERS - BLU POLISHED PAVER BY TECO-BLOC OR APPROVED EQUIVALENT
- SOD
- SEED - GREENFIELDS BY PICKSEED OR APPROVED EQUIVALENT
- ▨ WET TOLERANT SEED MIX
- ▨ SHRUB AND PERENNIAL PLANTING
- ▨ ENHANCED ENTRY PLANTING AREA
- PROPOSED DECIDUOUS TREE
- PROPOSED CONIFEROUS TREE
- PROPOSED SHRUBS
- SPECIES (SEE PLANT LIST)
- QUANTITY
- PROPOSED BLACK VINYL CHAINLINK FENCE 1.5m HT
- WOOD PRIVACY FENCE 1.8m HT (SEE D5 ON L3)
- TREE PROTECTION FENCE
- ▨ LIMIT OF UNDERGROUND GARAGE
- ▨ ACCESSIBLE PICNIC BENCH / TABLE
- ▨ BENCH

**GENERAL**

1. Read and interpret this drawing/ drawing set in conjunction with all the contract details and specifications, including related civil, utility, structural, architectural, mechanical, electrical, environmental, geotechnical, and survey information.
2. The Contractor is to determine the exact location, size, material, and elevation of all existing utilities prior to commencing construction. Protect and assume responsibility for all existing utilities regardless of being shown on the drawings.
3. It is essential to use the plans and details in conjunction with the specifications and notes.
4. Do not scale drawings. Work to dimensions only.
5. Protect all existing and retained vegetation for the duration of construction according to the contract details and specifications.
6. Reinstatement all areas and items damaged or disturbed, beyond the Limit of Work, because of construction activities, including but not limited to construction staging areas, haul roads, stockpile areas, etc. to the satisfaction of the Consultant. Unless otherwise noted, Contractor is to reinstate all areas to pre-construction condition or better to the satisfaction of the Contract Administrator.

**PLANTING**

1. Plant material to be No. 1 Grade and is to comply with Canadian Standards for Nursery Stock (latest edition) published by the Canadian Nursery Landscape Association.
2. Use structurally sound plant material with strong fibrous root system free of disease, defects, and injuries. Use trees with straight trunks, well and characteristically branched for species. Obtain approval from consultant of plant material at source prior to digging. All trees and shrubs to be container grown, potted, WB or B/B, as indicated on Plant List. Bare root plants are only acceptable for certain species and as approved by the Landscape Architect.
3. Plant material substitutions are not to be permitted without the written approval from the Consultant, with 48 hours notice, prior to shipping plant material.
4. Plant locations are schematic / approximate only. Contractor is to stake out locations on site for approval by the Landscape Architect prior to installation.
5. The illustrated number of plants shown in the Planting Plan supersedes the estimated number in the Plant List. Contractor to report any discrepancies to the Landscape Architect prior to installation. Contractor will assume full responsibility if the Landscape Architect is not notified.
6. Ensure trees are thoroughly watered following planting. Monitor material and ensure adequate moisture until acceptance.
7. In heavy clay or poorly drained soils, set root ball with root collar 75-100mm higher than finished grade.
8. Approved topsoil depths are as follows:
  - a. Plant Beds - 450mm continuous depth. Applies to shrubs, perennials, vines, and groundcovers.
  - b. Sod/ Seed Areas - 100mm depth.
  - c. Reforestation - 300mm depth.
9. Sod to be No. 1 Kentucky Bluegrass Sod grown from minimum mixture of 3 Kentucky Bluegrass cultivars. Quality and source are to comply with Canadian Standards for Nursery Stock, Section 17, (latest edition) published by the Canadian Nursery Landscape Nursery Landscape Association.
10. Apply the following mineral fertilizer unless soil tests show other requirements:
  - a. Plant Beds - (8-32-16), i.e. 8% Nitrogen, 32% Phosphorus, 16% Potash per manufacturer specifications.
  - b. Sod Areas - (8-32-16), i.e. 8% Nitrogen, 32% Phosphorus, 16% Potash at a rate of 350kg/ha.
12. Where applicable, for any plant areas with a mix of species/ cultivars notes, Contractor is to cluster like plants in groups of 3-5 and evenly distribute these in the noted area.

**PLANT LIST:**

KEY	QTY	BOTANICAL NAME	COMMON NAME	SIZE	COND	SPACING	NATIVE
<b>Coniferous Trees</b>							
ASA	4	<i>Abies balsamea</i>	Balsam Fir	200cm H	WB	As Shown	Native
PO	6	<i>Picea omorica</i>	Serbian Spruce	200cm H	WB	As Shown	Non-Native
<b>Deciduous Trees</b>							
ARA	2	<i>Acer rubrum 'Autumn Spire'</i>	Autumn Spire Red Maple	50cm Cal	WB	As Shown	Native
AXR	9	<i>Amelanchier 'grandiflora Robin Hill'</i>	Robin Hill Serviceberry	50cm Cal	WB	As Shown	Native
CRC	5	<i>Crataegus crus-galli 'Inermis'</i>	Thornless Cockspur Hawthorn	50cm Cal	WB	As Shown	Native
GB	4	<i>Ginkgo biloba</i>	Ginkgo (Maale)	50cm Cal	WB	As Shown	Non-Native
GTS	3	<i>Gleditsia triacanthos var. inermis 'Shademaster'</i>	Shademaster Honeylocust	50cm Cal	WB	As Shown	Native
MRR	11	<i>Malus 'Royal Raindrops'</i>	Royal Raindrops Crabapple	50cm Cal	WB	As Shown	Non-Native
<b>Coniferous Shrubs</b>							
Mic	152	<i>Microbiota decussata 'Prides'</i>	Celtic Pride Siberian Cypress	50cm Spr	PT	As Shown	Non-Native
<b>Deciduous Shrubs</b>							
AMS	184	<i>Aronia melanocarpa Low-Scape Snowfire</i>	Low-Scape Snow Fire Chokeberry	60cm H	PT	As Shown	Native
CKA	337	<i>Cornus sericea 'Nitejoy'</i>	Kelley Dogwood	40cm H	PT	As Shown	Native
CSD	51	<i>Cornus sanguinea 'Arctic Sun'</i>	Arctic Sun Dogwood	40cm H	PT	As Shown	Native
Ra	30	<i>Rhus aromatica</i>	Fragrant Sumac	60cm H	PT	As Shown	Native
Vd	42	<i>Viburnum dentatum</i>	Arrowwood Viburnum	60cm H	PT	As Shown	Native
<b>Ornamental Grasses</b>							
dgc	170	<i>Deschampsia cespitosa 'Goldau'</i>	Gold Dew Tufted Hair Grass	1g	PT	As Shown	Native

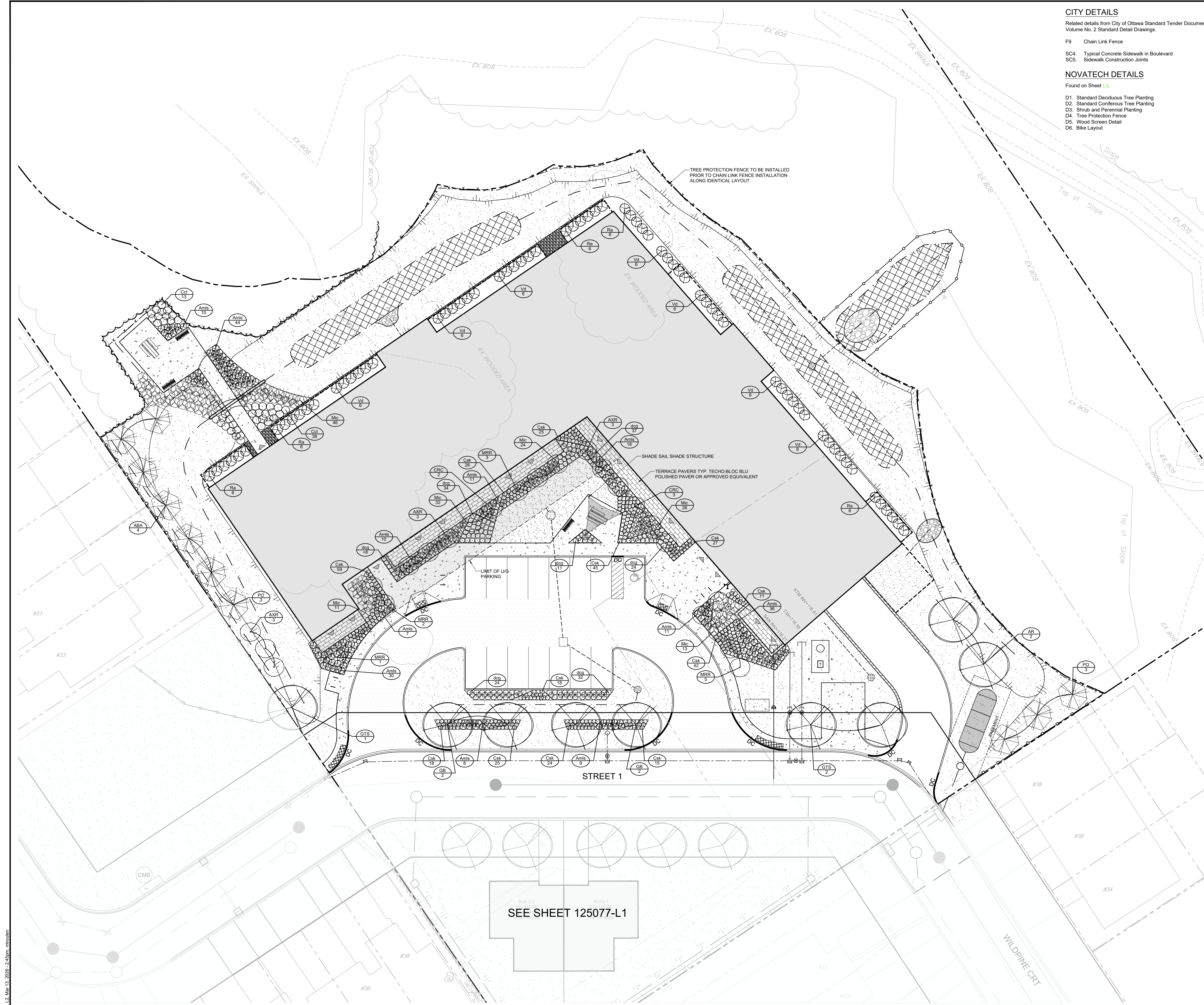
**CANOPY COVER:**

PROPOSED & RETAINED TREES - ESTIMATED CANOPY COVERAGE AT MATURITY				
PROPOSED TREES	AVERAGE MATURE SPREAD	APPROXIMATE CANOPY COVERAGE PER TREE AT MATURITY	QUANTITY OF TREES	TOTAL CANOPY COVERAGE (m <sup>2</sup> )
Deciduous trees - Large	15m	177	0	0
Deciduous trees - Medium	10m	79	25	211
Existing Deciduous trees - Small	4.5m	16	34	544
<b>TOTAL PROPOSED FUTURE CANOPY COVERAGE (m<sup>2</sup>):</b>			<b>Total 34</b>	<b>755</b>
<b>TOTAL RETAINED AND EXISTING CANOPY COVERAGE (m<sup>2</sup>):</b>				<b>10,919</b>
<b>TOTAL SITE AREA (m<sup>2</sup>) (Site Plan Area):</b>				<b>18,402</b>
<b>ESTIMATED FUTURE CANOPY COVERAGE (%):</b>				<b>4.1%</b>

1. Area of a circle = π r<sup>2</sup> / 4  
2. Canopy coverage per tree calculation: (Average spread/2) x (Average spread/2) x π  
\*Maturity factor is not added to the existing canopy cover of retained trees at site.

SOIL VOLUME CALCULATIONS SHOWN ON L3

**DISCLAIMER:**  
The elements on this plan illustrate the design intent and general constructability of the proposed landscape which will support the associated development. This is to demonstrate how the canopy cover, urban design, health, and climate change objectives of the Official Plan will be met through tree planting and site design. This drawing is for City review only and is not intended for construction. Final detailed design and construction documentation is to be provided with certified/issued for construction drawings and specifications prior to construction.



**NOTE:**  
THE POSITION OF ALL POLE LINES, CONDUITS, WATERMANS, SEWERS AND OTHER UNDERGROUND AND OVERGROUND UTILITIES AND STRUCTURES IS NOT NECESSARILY SHOWN ON THE CONTRACT DRAWINGS, AND WHERE SHOWN, THE ACCURACY OF THE POSITION OF SUCH UTILITIES AND STRUCTURES IS NOT GUARANTEED. BEFORE STARTING WORK, DETERMINE THE EXACT LOCATION OF ALL SUCH UTILITIES AND STRUCTURES AND ASSUME ALL LIABILITY FOR DAMAGE TO THEM.

No.	REVISION	DATE	BY
3.	ISSUED FOR ROW DETAILED DESIGN AND SPC	MAR 13/26	RGJ
2.	ISSUED FOR SITE PLAN APPLICATION	FEB 19/26	MJT
1.	ISSUED FOR CLIENT REVIEW	SEP 30/25	MJT

SCALE: 1:200

**FOR REVIEW ONLY**

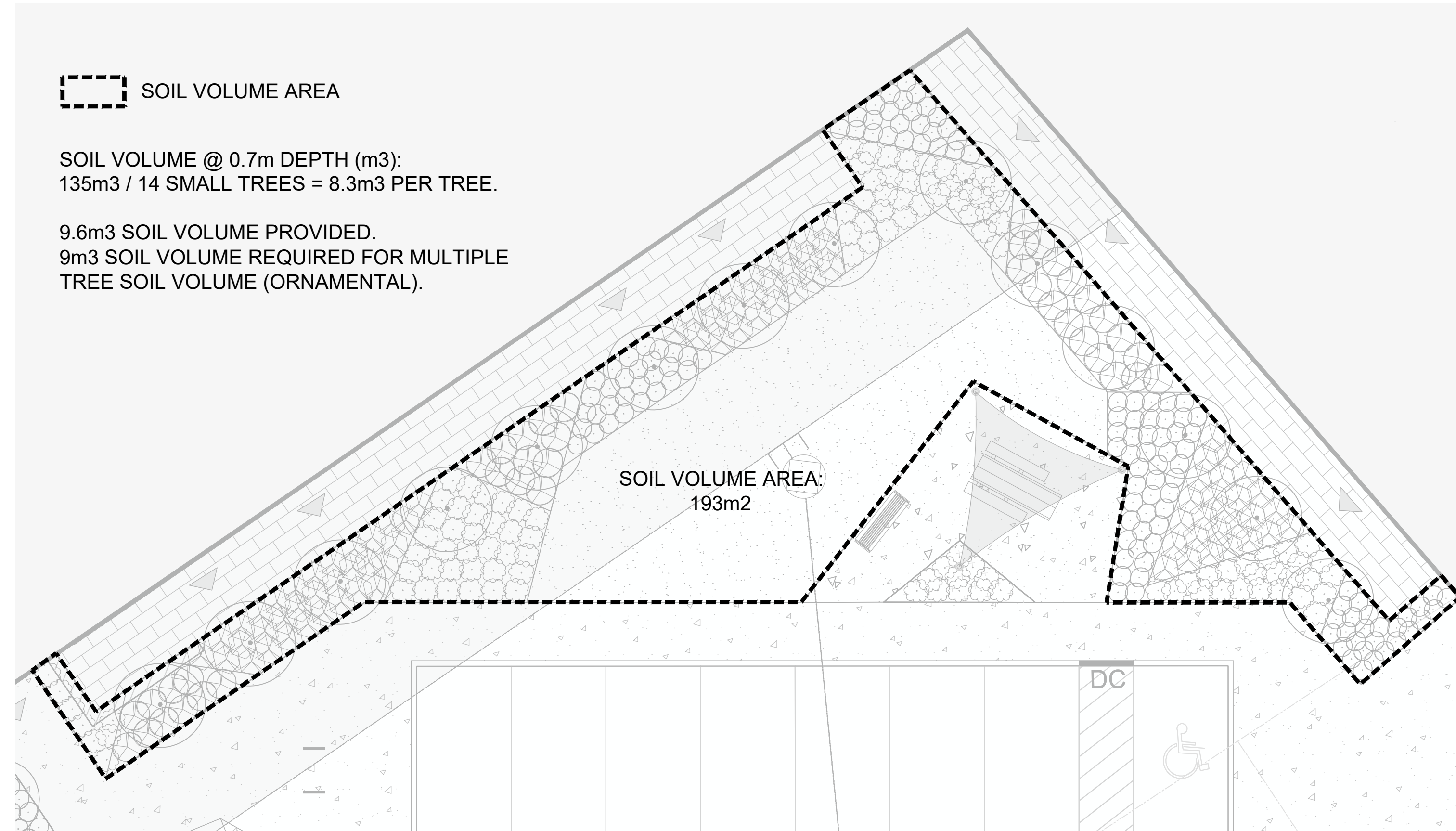
DESIGN: MJT  
CHECKED: MJT  
DRAWN: MJT  
CHECKED: MJT  
APPROVED: RGJ

LOCATION: CITY OF OTTAWA, 37 WILDPINE COURT

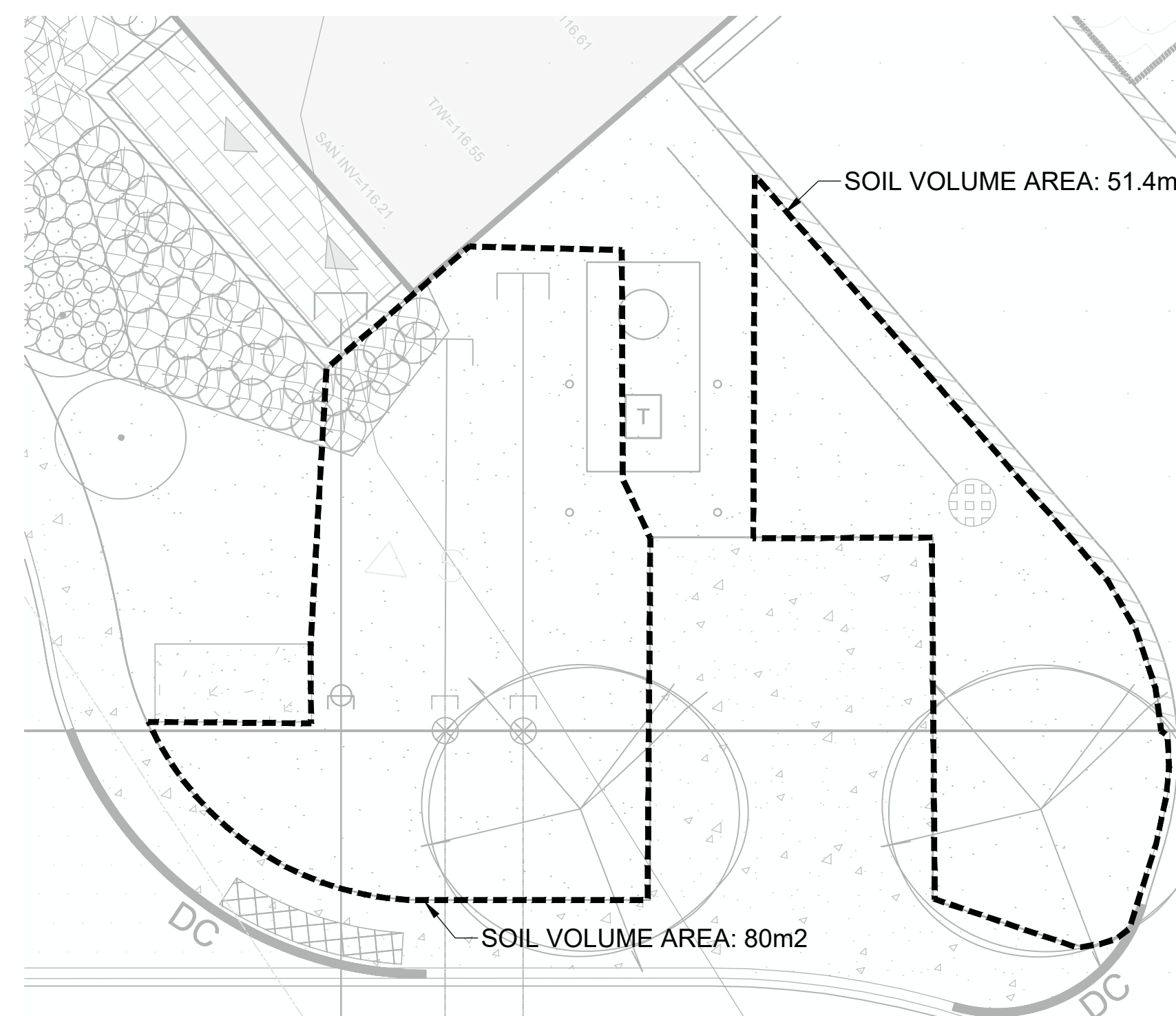
DRAWING NAME: LANDSCAPE PLAN - BLOCK 2

PROJECT No.: 125077  
REV: REV #3  
DRAWING No.: 125077-L2

**NOVATECH**  
Engineers, Planners & Landscape Architects  
Suite 200, 240 Michael Cowpland Drive  
Ottawa, Ontario, Canada K2M 1P6  
Telephone: (613) 254-9643  
Facsimile: (613) 254-5867  
Website: www.novatech-eng.com

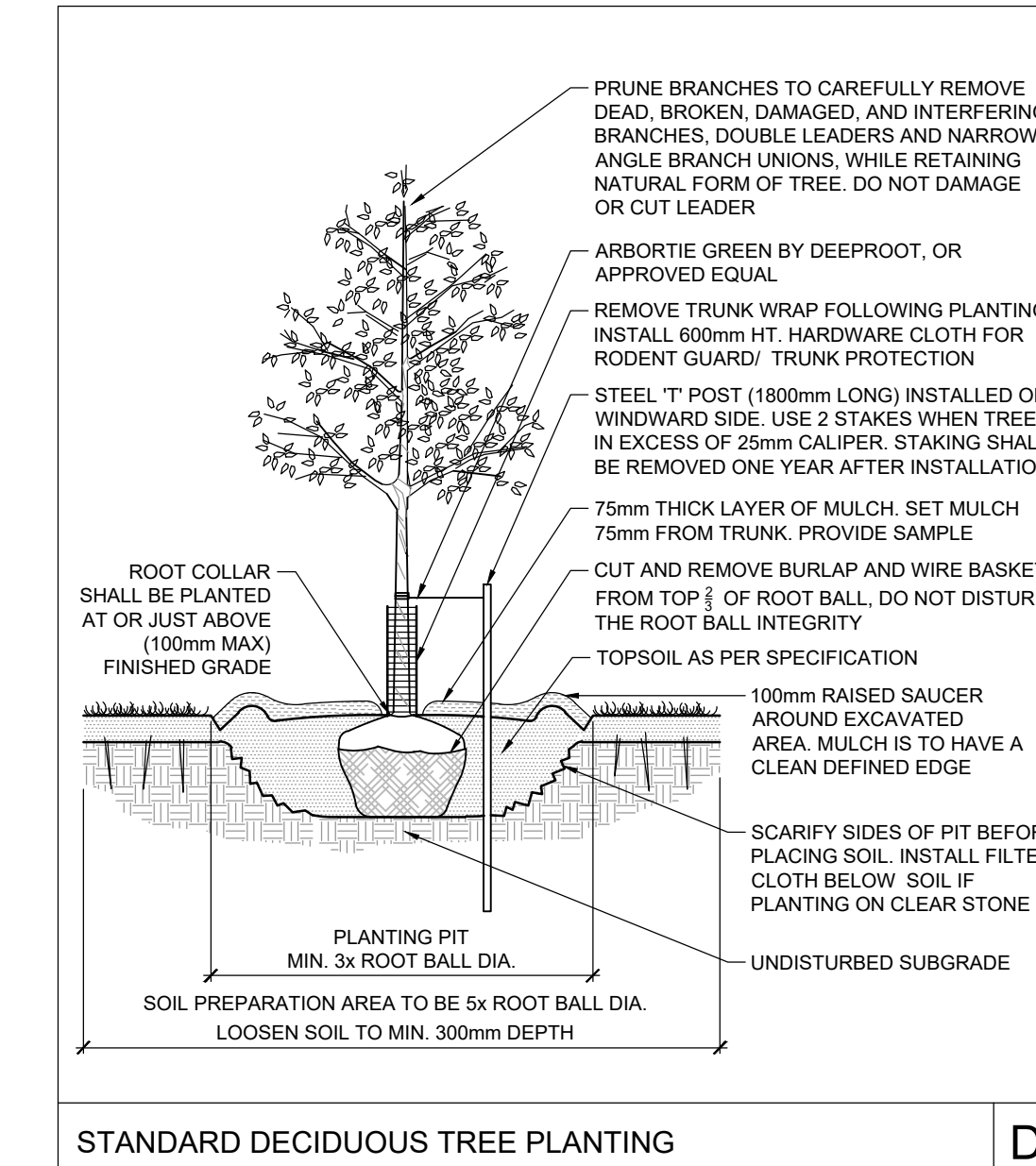


SOIL VOLUME CALCULATIONS

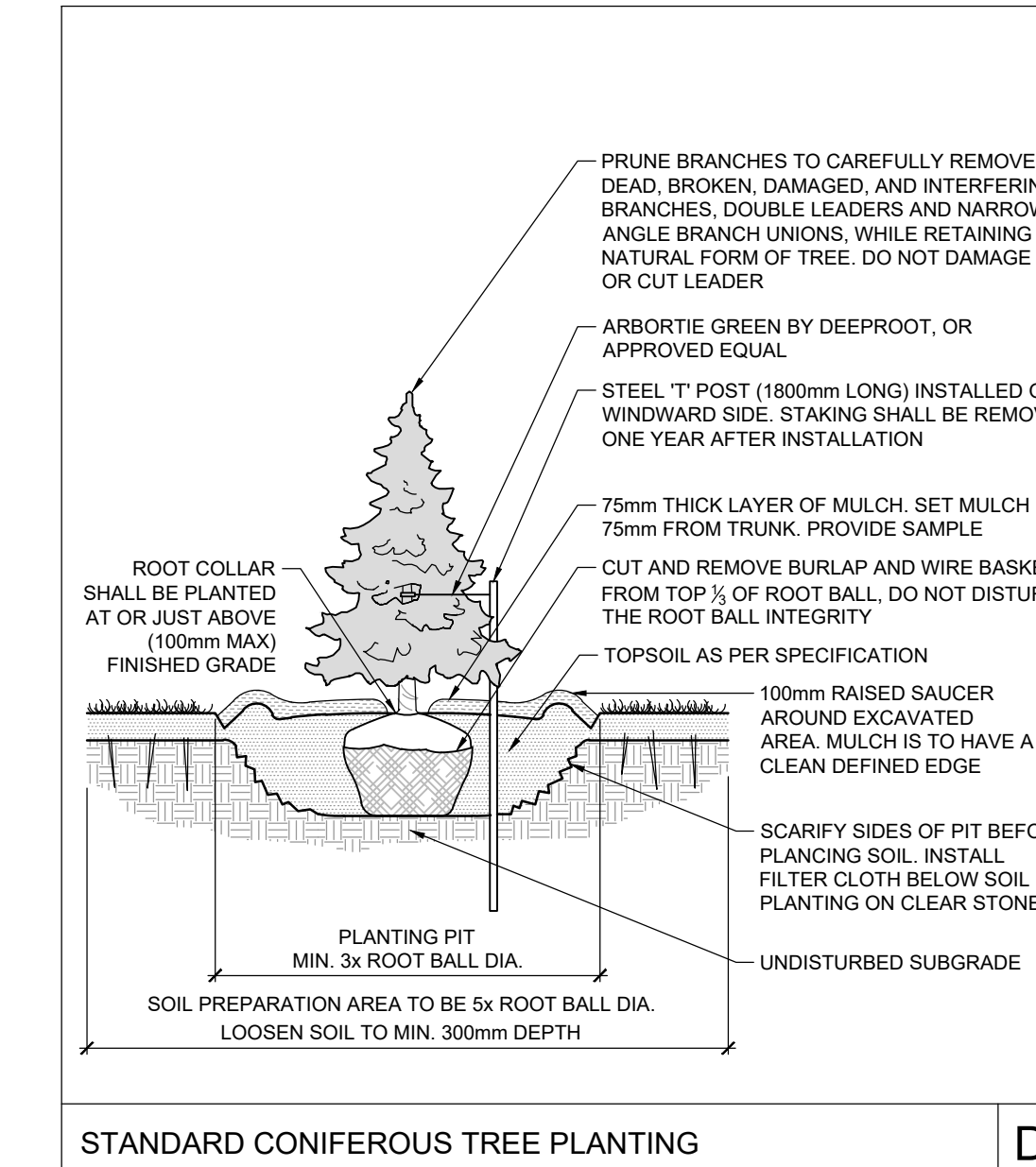


SOIL VOLUME AREA 80m2 @ 0.7m DEPTH: 56m3  
 SOIL VOLUME AREA 51.4m2 @ 0.7m DEPTH: 36m3  
 LARGE TREE SOIL VOLUME REQUIREMENTS: 30m3

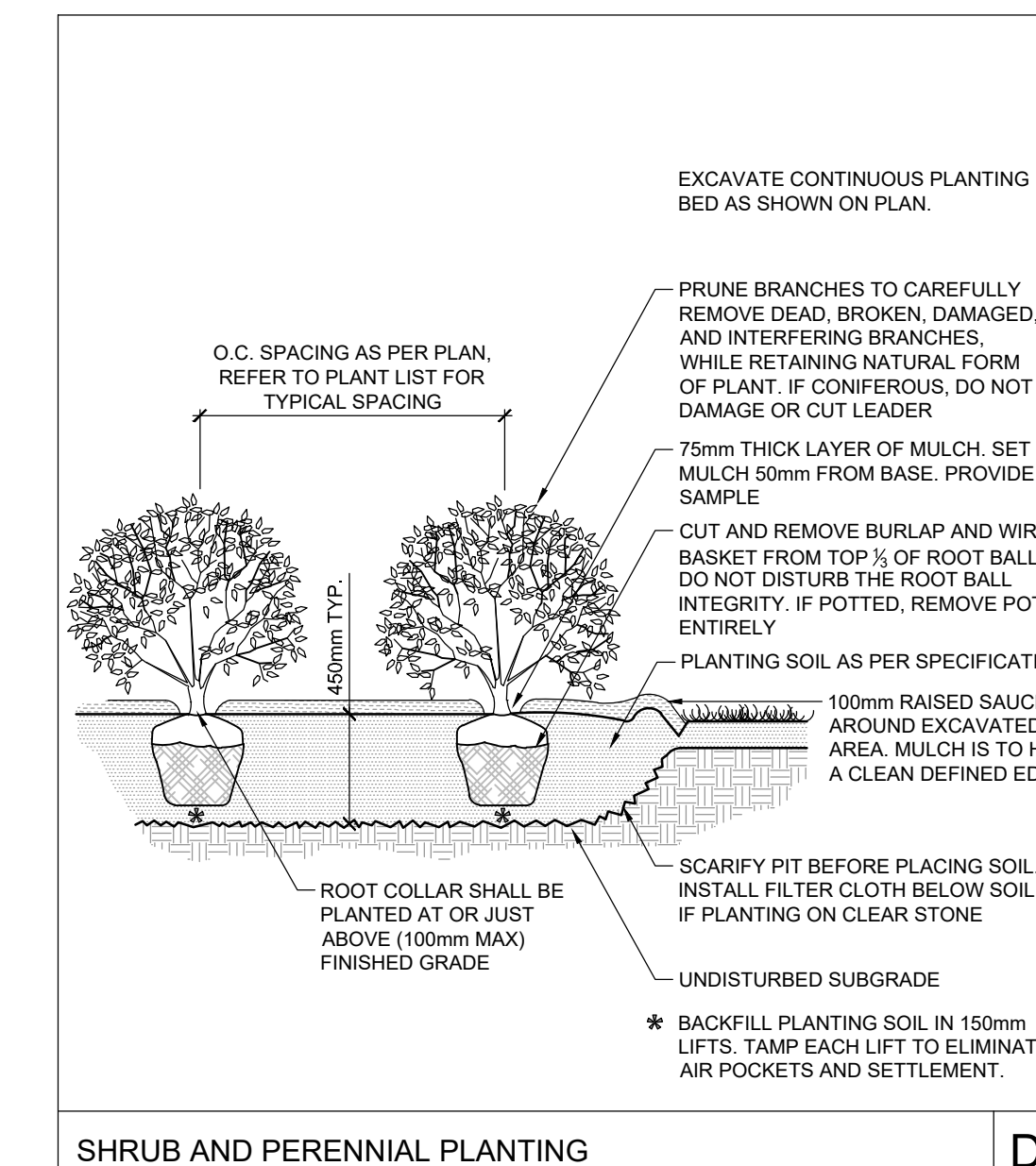
**DISCLAIMER:**  
 The elements on this plan illustrate the design intent and general constructability of the proposed landscape which will support the associated development. This is to demonstrate how the canopy cover, urban design, health, and climate change objectives of the Official Plan will be met through tree planting and site design. This drawing is for City review only and is not intended for construction. Final detailed design and construction documentation is to be provided with certified 'Issued for Construction' drawings and specifications prior to construction.



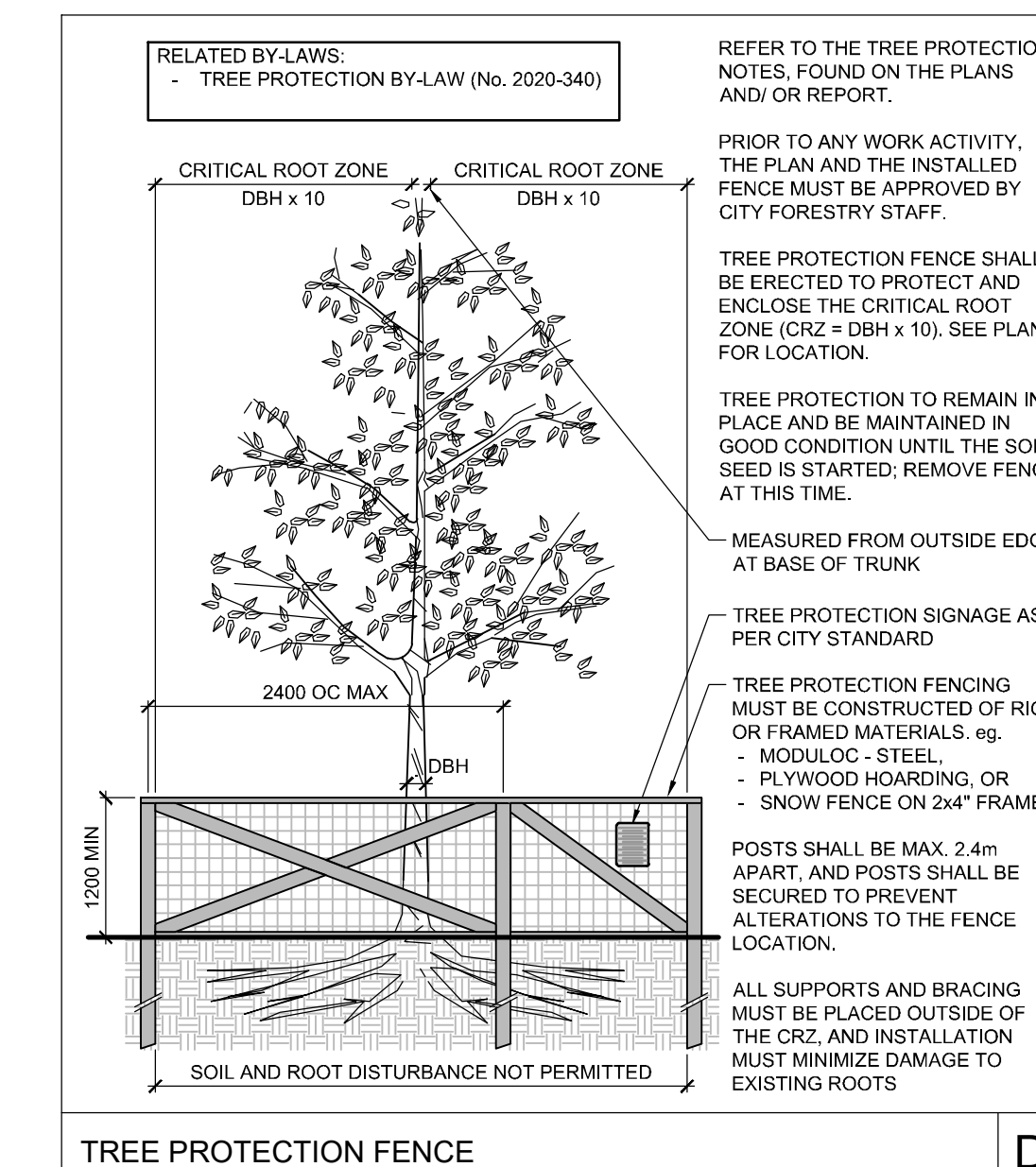
STANDARD DECIDUOUS TREE PLANTING D1



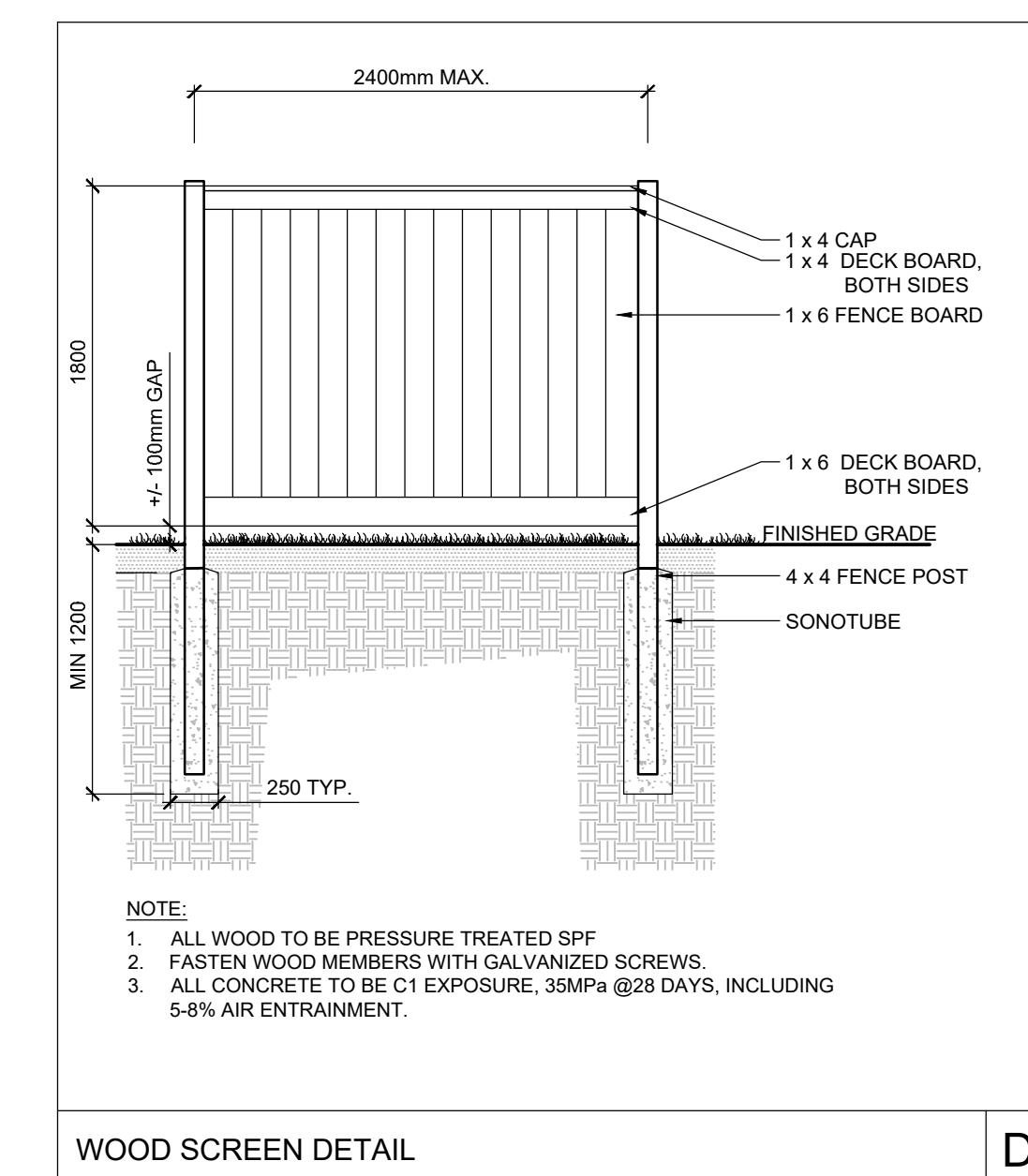
STANDARD CONIFEROUS TREE PLANTING D2



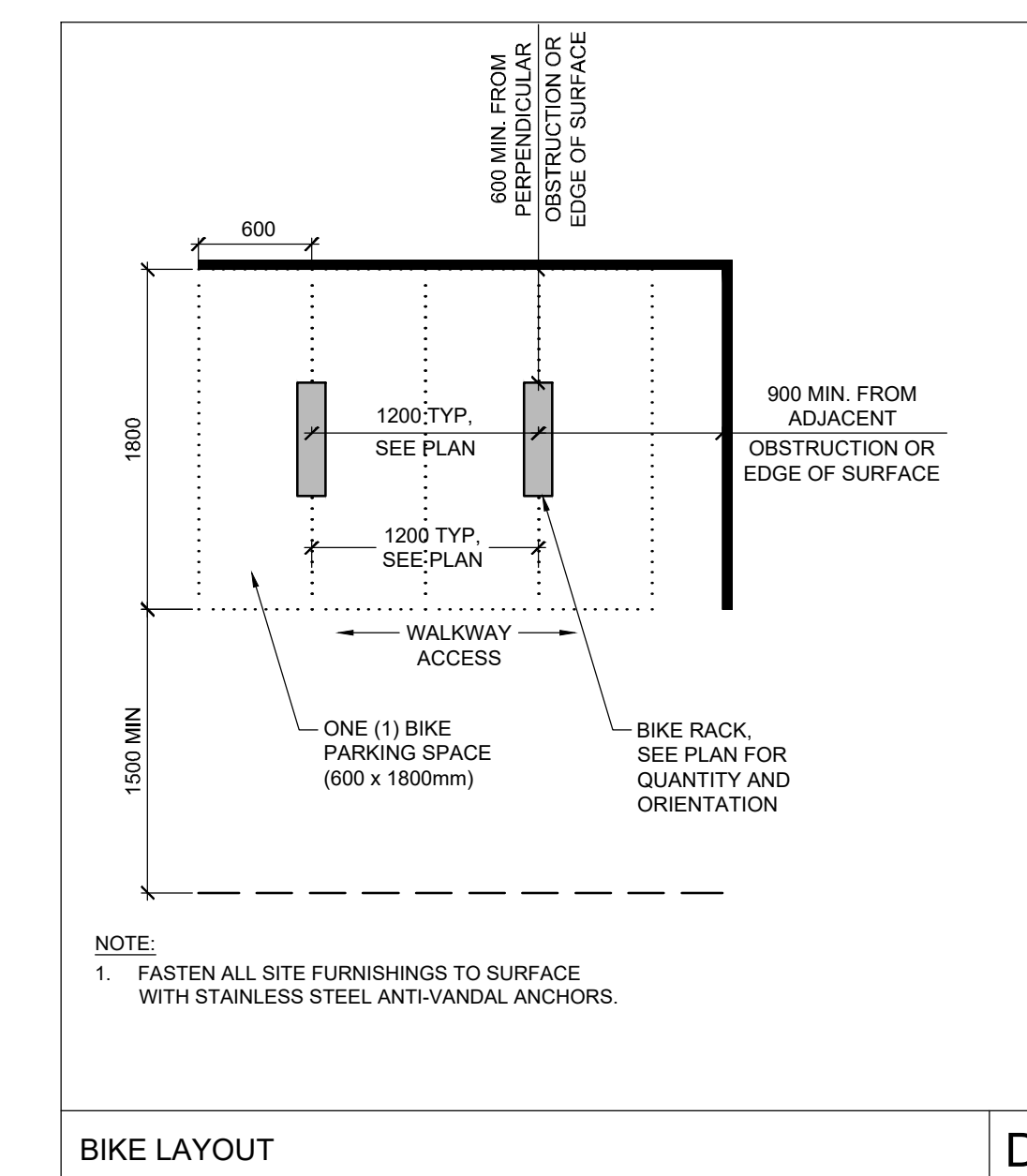
SHRUB AND PERENNIAL PLANTING D3



TREE PROTECTION FENCE D4



WOOD SCREEN DETAIL D5



BIKE LAYOUT D6

**NOTE:**  
 THE POSITION OF ALL POLE LINES, CONDUITS, WATERMANS, SEWERS AND OTHER UNDERGROUND AND OVERGROUND UTILITIES AND STRUCTURES IS NOT NECESSARILY SHOWN ON THE CONTRACT DRAWINGS, AND WHERE SHOWN, THE ACCURACY OF THE POSITION OF SUCH UTILITIES AND STRUCTURES IS NOT GUARANTEED. BEFORE STARTING WORK, DETERMINE THE EXACT LOCATION OF ALL SUCH UTILITIES AND STRUCTURES AND ASSUME ALL LIABILITY FOR DAMAGE TO THEM.

No.	REVISION	DATE	BY
2	ISSUED FOR ROW DETAILED DESIGN AND SPC	MAR 13/26	RGJ
1	ISSUED FOR SITE PLAN APPLICATION	FEB 19/26	RGJ

SCALE	DESIGN	CHECKED	DRAWN	APPROVED
N/A	MJT	MJT	MJT	RGJ
N/A	MJT	MJT	MJT	RGJ

**FOR REVIEW ONLY**

**NOVATECH**  
 Engineers, Planners & Landscape Architects  
 Suite 200, 240 Michael Copeland Drive  
 Ottawa, Ontario, Canada K2M 1P6  
 Telephone: (613) 254-9643  
 Facsimile: (613) 254-5867  
 Website: www.novatech-eng.com

LOCATION: CITY OF OTTAWA, 37 WILDPINE COURT  
 DRAWING NAME: LANDSCAPE DETAILS  
 PROJECT No.: 125077  
 REV #2: 125077-L3