

*G. Wildman*

**GERALDINE WILDMAN**  
MANAGER, DEVELOPMENT REVIEW SOUTH  
PLANNING, DEVELOPMENT AND BUILDING SERVICES  
DEPARTMENT, CITY OF OTTAWA

**APPROVED**  
By wildmange at 10:49 am, Feb 18, 2026

**Q4A**  
ARCHITECTS

**Q4 ARCHITECTS INC.**

4110 Yonge Street  
Suite 602, Toronto ON  
M2P 2B7

T 416.322.6334  
F 416.322.7294  
E info@q4architects.com



The contractor / builder must verify all dimensions on the job and report any discrepancy to the designer before proceeding with the work. Drawings are NOT to be scaled. All drawings and specifications are instruments of service and the copyright property of the designer and must be returned upon request.

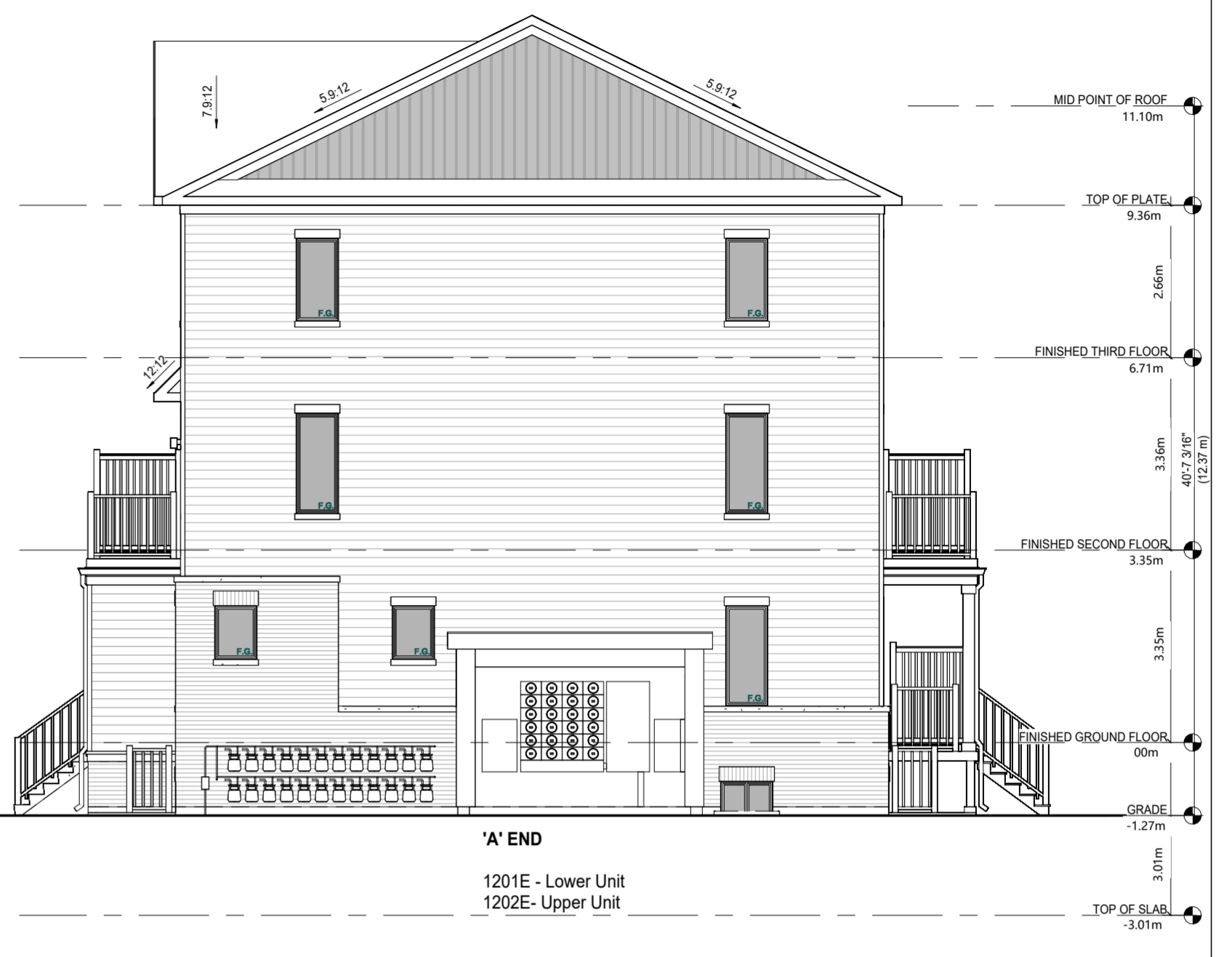
Q4 Architects Inc. retains the copyright in all drawings, plans, sketches, and all digital information. They may not be copied or used for any other projects or purposes or distributed without the written consent of Q4 Architects Inc.

**NOTES:**

Block elevations are to vary between blocks with the provided two options Option 1 and Option 2.  
Blocks that front public ROW (Les Emerson, Mineral and Conservancy Dr) will have a Typical front elevations with Upgraded rear elevations varying between blocks with Option 1 and Option 2.  
Blocks 2, 5, 6 and will have both Typical front and rear elevations. Elevation style to vary between blocks.



**1 24 UNIT BLOCK - FRONT ELEVATION - OPTION 1 (CORNER UPGRADE)**  
1:96



**4 24 UNIT BLOCK - RIGHT ELEVATION - OPTION 1**  
1:96



**2 24 UNIT BLOCK - REAR ELEVATION - OPTION 1 (CORNER UPGRADE)**  
1:96



**3 24 UNIT BLOCK - LEFT ELEVATION - OPTION 1**  
1:96

2 STAMPED SPI- CITY RE-SUBMISSION 2026.01.12  
1 SPI- CITY SUBMISSION 2024.10.02

PLAN NO. 18754  
DEV. NO. D07-12-24-0097

**OAST Stacked Towns**  
**CONSERVANCY STACKED TOWNS**

Part of Lot 14, Concession r (Rideau Front),  
Geographic Township of Nepean

Ottawa, ON  
3285 Borrisokane Rd.  
OTTAWA, ON.

**CAIVAN**

Project No. **24006**  
Scale **1:96**  
Drawn By **JM**  
Checked By **SW**

**ELEVATIONS**

C:\Users\swatkin\Documents\OAST Stacked Towns\Block\_24 Units\dwg\FW24W.rvt 2024-09-06 2:25:58

**Q4 ARCHITECTS INC.**

4110 Yonge Street  
Suite 602, Toronto ON  
M2P 2B7

T 416.322.6334  
F 416.322.7294  
E info@q4architects.com



The contractor / builder must verify all dimensions on the job and report any discrepancy to the designer before proceeding with the work. Drawings are NOT to be scaled. All drawings and specifications are instruments of service and the copyright property of the designer and must be returned upon request.

Q4 Architects Inc. retains the copyright in all drawings, plans, sketches, and all digital information. They may not be copied or used for any other projects or purposes or distributed without the written consent of Q4 Architects Inc.

**NOTES:**

Block elevations are to vary between blocks with the provided two options Option 1 and Option 2.

Blocks that front public ROW (Les Emmerson, Mineral and Conservancy Dr) will have a Typical front elevations with Upgraded rear elevations varying between blocks with Option 1 and Option 2.

Blocks 2, 5, 6 and will have both Typical front and rear elevations. Elevation style to vary between blocks.

*G. Wildman*  
**GERALDINE WILDMAN**  
MANAGER, DEVELOPMENT REVIEW SOUTH  
PLANNING, DEVELOPMENT AND BUILDING SERVICES  
DEPARTMENT, CITY OF OTTAWA

**APPROVED**  
By wildmange at 10:48 am, Feb 18, 2026



③ 24 UNIT BLOCK - UPGRADE RIGHT ELEVATION  
1:96

① 24 UNIT BLOCK - UPGRADE REAR ELEVATION OPTION 1 (CORNER UPGRADE)  
1:96

2	STAMPED SPI- CITY RE-SUBMISSION	2026.01.12
1	SPI- CITY SUBMISSION	2024.10.02

PLAN NO. 18754  
DEV. NO. D07-12-24-0097

**OAST Stacked Towns  
CONSERVANCY  
STACKED TOWNS**

Part of Lot 14, Concession r (Rideau Front),  
Geographic Township of Nepean

Ottawa, ON  
3285 Borrisokane Rd.  
OTTAWA, ON.

**CAIVAN**

Project No.	24006
Scale	1:96
Drawn By	JM
Checked By	SW

**ELEVATIONS**

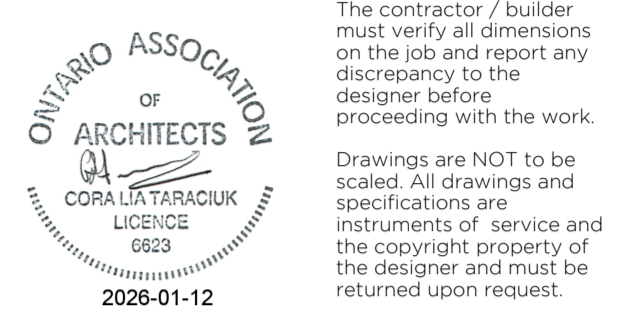
*G. Wildman*

**GERALDINE WILDMAN**  
**MANAGER, DEVELOPMENT REVIEW SOUTH**  
**PLANNING, DEVELOPMENT AND BUILDING SERVICES**  
**DEPARTMENT, CITY OF OTTAWA**

**APPROVED**  
*By wildmange at 10:48 am, Feb 18, 2026*

**Q4 ARCHITECTS INC.**

4110 Yonge Street  
 Suite 602, Toronto ON  
 M2P 2B7  
 T: 416.322.6334  
 F: 416.322.7294  
 E: info@q4architects.com



Q4 Architects Inc. retains the copyright in all drawings, plans, sketches, and all digital information. They may not be copied or used for any other projects or purposes or distributed without the written consent of Q4 Architects Inc.

**NOTES:**

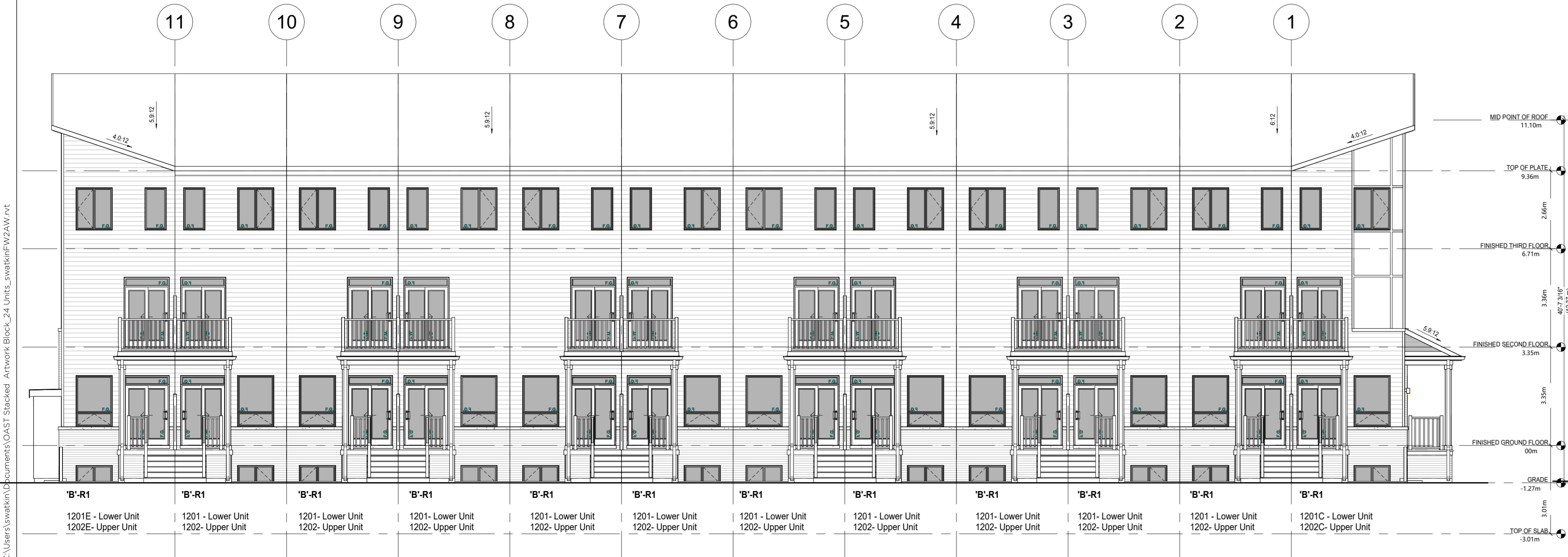
- Block elevations are to vary between blocks with the provided two options Option 1 and Option 2.
- Blocks that front public ROW (Les Emerson, Mineral and Conservancy Dr) will have a Typical front elevations with Upgraded rear elevations varying between blocks with Option 1 and Option 2.
- Blocks 2, 5, 6 and will have both Typical front and rear elevations. Elevation style to vary between blocks.



**1 24 UNIT BLOCK - FRONT ELEVATION - OPTION 2 (CORNER UPGRADE)**  
1:96



**4 24 UNIT BLOCK - RIGHT ELEVATION**  
1:96



**2 24 UNIT BLOCK - REAR ELEVATION - OPTION 2 (CORNER UPGRADE)**  
1:96



**3 24 UNIT BLOCK - LEFT ELEVATION**  
1:96

2	STAMPED SPI- CITY RE-SUBMISSION	2026.01.12
1	SPI- CITY SUBMISSION	2024.10.02

PLAN NO. 18754  
 DEV. NO. D07-12-24-0097

**OAST Stacked Towns**  
**CONSERVANCY STACKED TOWNS**

Part of Lot 14, Concession r (Rideau Front),  
 Geographic Township of Nepean

Ottawa, ON  
 3285 Borrisokane Rd.  
 OTTAWA, ON.

**CAIVAN**

Project No. **24006**  
 Scale **1:96**  
 Drawn By **JM**  
 Checked By **SW**

**ELEVATIONS**

2024-09-06 2:56:48 C:\Users\swatkin\Documents\OAST Stacked Towns\Block\_24 Units\swatkin\FW24W.rvt

*G. Wildman*

**GERALDINE WILDMAN**  
MANAGER, DEVELOPMENT REVIEW SOUTH  
PLANNING, DEVELOPMENT AND BUILDING SERVICES  
DEPARTMENT, CITY OF OTTAWA

**APPROVED**  
By wildmange at 10:48 am, Feb 18, 2026

**Q4 ARCHITECTS INC.**

4110 Yonge Street  
Suite 602, Toronto ON  
M2P 2B7

T 416.322.6334  
F 416.322.7294  
E info@q4architects.com



The contractor / builder must verify all dimensions on the job and report any discrepancy to the designer before proceeding with the work. Drawings are NOT to be scaled. All drawings and specifications are instruments of service and the copyright property of the designer and must be returned upon request.

Q4 Architects Inc. retains the copyright in all drawings, plans, sketches, and all digital information. They may not be copied or used for any other projects or purposes or distributed without the written consent of Q4 Architects Inc.

**NOTES:**

Block elevations are to vary between blocks with the provided two options Option 1 and Option 2.

Blocks that front public ROW (Les Emmerson, Mineral and Conservancy Dr) will have a Typical front elevations with Upgraded rear elevations varying between blocks with Option 1 and Option 2.

Blocks 2, 5, 6 and will have both Typical front and rear elevations. Elevation style to vary between blocks.



③ 24 UNIT BLOCK - UPGRADE RIGHT ELEVATION  
1:96

② 24 UNIT BLOCK - UPGRADE REAR ELEVATION - OPTION 2 (CORNER UPGRADE)  
1:96

2 | STAMPED SPL: CITY RE-SUBMISSION | 2026.01.12  
1 | SPL: CITY SUBMISSION | 2024.10.02

PLAN NO. 18754  
DEV. NO. D07-12-24-0097

**OAST Stacked Towns**  
**CONSERVANCY**  
**STACKED TOWNS**

Part of Lot 14, Concession r (Rideau Front),  
Geographic Township of Nepean

Ottawa, ON  
3285 Borrisokane Rd.  
OTTAWA, ON.

CAIVAN

Project No. 24006  
Scale 1:96  
Drawn By JM  
Checked By SW

**ELEVATIONS**