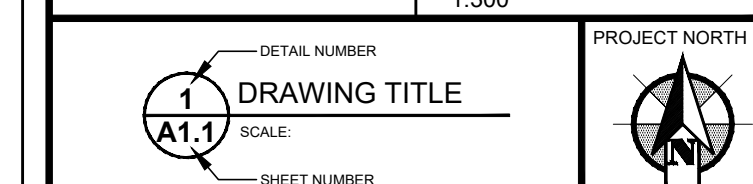


RE-ISSUED FOR SITE PLAN APPROVAL	2026-01-23		
ISSUED FOR SITE PLAN APPROVAL	2025-11-06		
NUMBER / NUMÉRO	MILESTONE / FAIT SAILLANT	DATE (Y/M/D) / DATE (Y/M/D)	INITIALS / INITIALES
DESIGNED BY / CONÇU PAR	CHECKED BY / VÉRIFIÉ PAR		
DRAWN BY / DESSINÉ PAR	SCALE		
	1:300		



THIS DRAWING IS THE PROPERTY OF THE CITY OF OTTAWA AND ALL COPYRIGHT IS RESERVED. DIMENSIONS ON DRAWING ARE FOR ESTIMATING PURPOSES ONLY. IT IS THE RESPONSIBILITY OF EACH CONTRACTOR AND SUB-CONTRACTOR OR CONSULTANT TO CHECK AND VERIFY ALL DIMENSIONS AND CONDITIONS ON SITE. NOTIFY OWNER OF ANY ERRORS OR OMISSIONS PRIOR TO COMMENCING THE WORK. DO NOT SCALE THE DRAWINGS.

CE Dessin constitue la propriété de la Ville d'Ottawa et tout droit d'auteur est réservé. Les dimensions utilisées le sont à des fins d'estimation seulement. Il incombe à chaque entrepreneur, sous-contractant ou consultant de vérifier toutes les dimensions et les conditions sur le chantier. Veuillez informer le propriétaire de toute erreur ou omission avant d'entamer les travaux. Ne dressez pas les plans à l'échelle.

ARCHITECT / ARCHITECTE
CONSULTANT / EXPERT-CONSEIL

CONSULTANT / EXPERT-CONSEIL
CONSULTANT / EXPERT-CONSEIL

PROJECT / LOCATION / PROJET / ENDROIT
**LARRY ROBINSON ARENA
NEW ADDITION**

2785 8th LINE ROAD
OTTAWA, ONTARIO

DRAWING / DESSIN
ELEVATIONS

BUSINESS ENTITY / NUMÉRO DE L'ENTITÉ
BUILDING NUMBER / NUMÉRO DU BÂTIMENT

SHEET NO. / FEUILLE NO.
A201

PROJECT NO. / NUMÉRO DE PROJET
CF000533

ELEVATION LEGEND: (REFER TO APPENDIX A)

CWx	ALUMINUM CURTAIN WALL FRAME AND INSULATED GLAZING UNIT. REFER TO A201
CMS-01	COMPOSITE METAL PANELS
MS-0X	19mm PREFORMED METAL SIDING CORRUGATED- COLOUR
RMF-0X	PRE-FINISHED ROOF METAL CAP FLASHING COLOUR TO MATCH FIELD SIDING COLOUR OR COMPOSITE METAL PANEL COLOUR BELOW (TYPICAL)
LF	EXTERIOR WALL MOUNTED LIGHT FIXTURE - REFER TO ELECTRICAL
LV-X	PREFINISHED EXTERIOR LOUVER. REFER TO A201 AND MECHANICAL DRAWINGS
AP-0X	ANODIZED ALUMINUM SPANDREL PANEL
N.I.C	NOT IN CONTRACT

ELEVATION LEGEND:

EXTERIOR METAL SIDING

Vertical and horizontal corrugated pre-finished metal siding as per Dwg A-200 -Corrugated 7/8", C-360, 22 gauge

Colours:

MS-01 Ideal Roofing Perspectal Weather X "Bright Silver" Metallic Series - ID 2624

MS-02 Ideal Roofing Perspectal Weather X "Black" - ID 6262

Feature colours:

MS-03 Ideal Roofing Perspectal Weather X Allow for 2 selections from full range of manufacturer colours

Exterior metal siding & roofing flashing - Pre-finished metal flashing to match field colour, and finish of field siding to suit: 24 gauge. Allow for selection of colours to match metal siding colours (typ)

CW-xx Glazed Aluminum Curtainwall Window Systems

- Kawneer 1600 Wall System 1; 63.5 mm x 152mm total depth (reinforcing as required for wind loading and loading for guards).
- Standard cap depth - Anodized aluminum finish & Black anodized finish as per Dwg A-200.
- Standard cap depth - Anodized aluminum finish & Black anodized finish as per Dwg A-200

ADx Exterior aluminum door systems

- Door Framing - Kawneer 350T Insulpuor Thermal Entrances c/w clear anodized framing systems & Clear anodized snap caps. C/W Black framing systems and Black anodized snap caps as per Dwg A-200

CMS-01 Exterior cladding

- Metal Composite Material (MCM) Panel Systems
- Aluobond Plus c/w fire rated core & thickness to suit
- Colours: allow for selection from full range of anodized finishes in the black and white ranges

GRH-1 Exterior grade primed/ painted guard rails and handrails

CJ Exterior Metal Siding Control Joint

Hatch area indicates area of existing concrete block wall to be brushed, sanded and cleaned ready for new paint finish. Remove existing concrete block at all mechanical and electrical penetrations through wall and reinstate with new concrete block to suit existing concrete block size

