

**PROJECT DATA**

PROJECT ADDRESS: 1900 CYRVILLE ROAD  
OTTAWA, ONTARIO

EXISTING AREA: 47,574.2m<sup>2</sup> (4.76 ha) / 11.76 ac  
 PROPOSED AREA: 46,850.8m<sup>2</sup> (4.69 ha) / 11.58 ac

ZONING: GM12 - GENERAL MIXED USE ZONE  
 JURISDICTION: CITY OF OTTAWA

BOUNDARY INFORMATION: THIS DRAWING IS BASED ON A SURVEY FROM WSP GEOMATICS ONTARIO LIMITED O.L.S. DATED 2020.

EXISTING BUILDING DATA	AREA	
BUILDING GROSS FLOOR AREA	11,730.0m <sup>2</sup>	126,261ft <sup>2</sup>
SHORE POWER BUILDING	8.7m <sup>2</sup>	94ft <sup>2</sup>
<b>TOTAL GROSS FLOOR AREA</b>	<b>11,738.7m<sup>2</sup></b>	<b>126,355ft<sup>2</sup></b>

PROPOSED BUILDING DATA	AREA	
BUILDING GROSS FLOOR AREA	11,730.0m <sup>2</sup>	126,261ft <sup>2</sup>
SHORE POWER BUILDING	8.7m <sup>2</sup>	94ft <sup>2</sup>
PROPOSED GAS BAR MECHANICAL ENCLOSURE	17.2m <sup>2</sup>	185ft <sup>2</sup>
PROPOSED GAS BAR ATTENDANT ENCLOSURE	1.4m <sup>2</sup>	15ft <sup>2</sup>
<b>TOTAL GROSS FLOOR AREA</b>	<b>11,757.3m<sup>2</sup></b>	<b>126,555ft<sup>2</sup></b>

PROPOSED FUEL FACILITY CANOPY HEIGHT:	5.64m
PROPOSED MECHANICAL ENCLOSURE HEIGHT:	2.82m

EXISTING SITE DATA	AREA
LOT COVERAGE	24.7% 11,738.7m <sup>2</sup>
LANDSCAPE OPEN SPACE	16.1% 7,687.1m <sup>2</sup>
PAVED PARKING AREA	59.2% 28,148.4m <sup>2</sup>

PROPOSED SITE DATA	AREA
LOT COVERAGE	24.7% 11,757.3m <sup>2</sup>
LANDSCAPE OPEN SPACE	17.7% 8,429.3m <sup>2</sup>
PAVED PARKING AREA	57.6% 27,387.6m <sup>2</sup>

EXISTING PARKING DATA	PARKING SPACES
REQUIRED PARKING (3.4 / 100m <sup>2</sup> )	400
NUMBER OF 3.0m WIDE PARKING SPACES PROVIDED	555
NUMBER OF 2.75m WIDE PARKING SPACES PROVIDED	14
NUMBER OF LOADING SPACES PROVIDED	14
NUMBER OF BARRIER-FREE PARKING SPACES PROVIDED	20
TOTAL COSTCO PARKING SPACES PROVIDED	603
NO. STALLS PROVIDED PER 100m <sup>2</sup> OF COSTCO BUILDING AREA	5.14
NUMBER OF 3.66m WIDE DELIVERY TRUCK STALLS	20

PROPOSED PARKING DATA	PARKING SPACES
REQUIRED PARKING (3.4 / 100m <sup>2</sup> )	400
NUMBER OF 3.0m WIDE PARKING SPACES PROVIDED	429
NUMBER OF 2.75m WIDE PARKING SPACES PROVIDED	9
NUMBER OF LOADING SPACES PROVIDED	12
NUMBER OF BARRIER-FREE PARKING SPACES PROVIDED	20
TOTAL COSTCO PARKING SPACES PROVIDED	470
NO. STALLS PROVIDED PER 100m <sup>2</sup> OF COSTCO BUILDING AREA	4.00
NUMBER OF 3.66m WIDE DELIVERY TRUCK STALLS	20

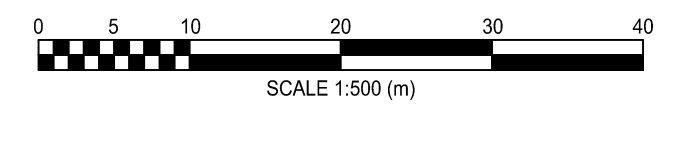
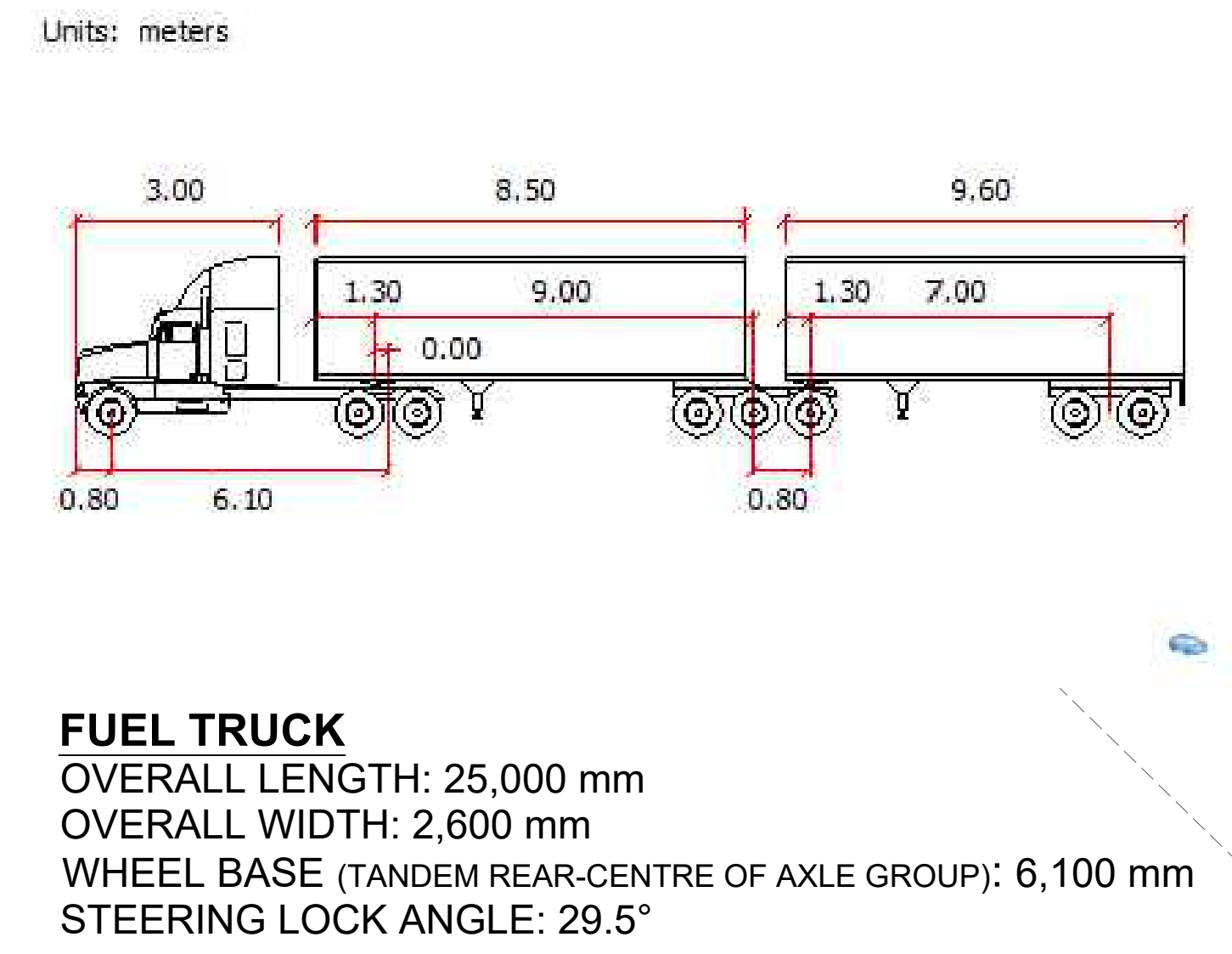
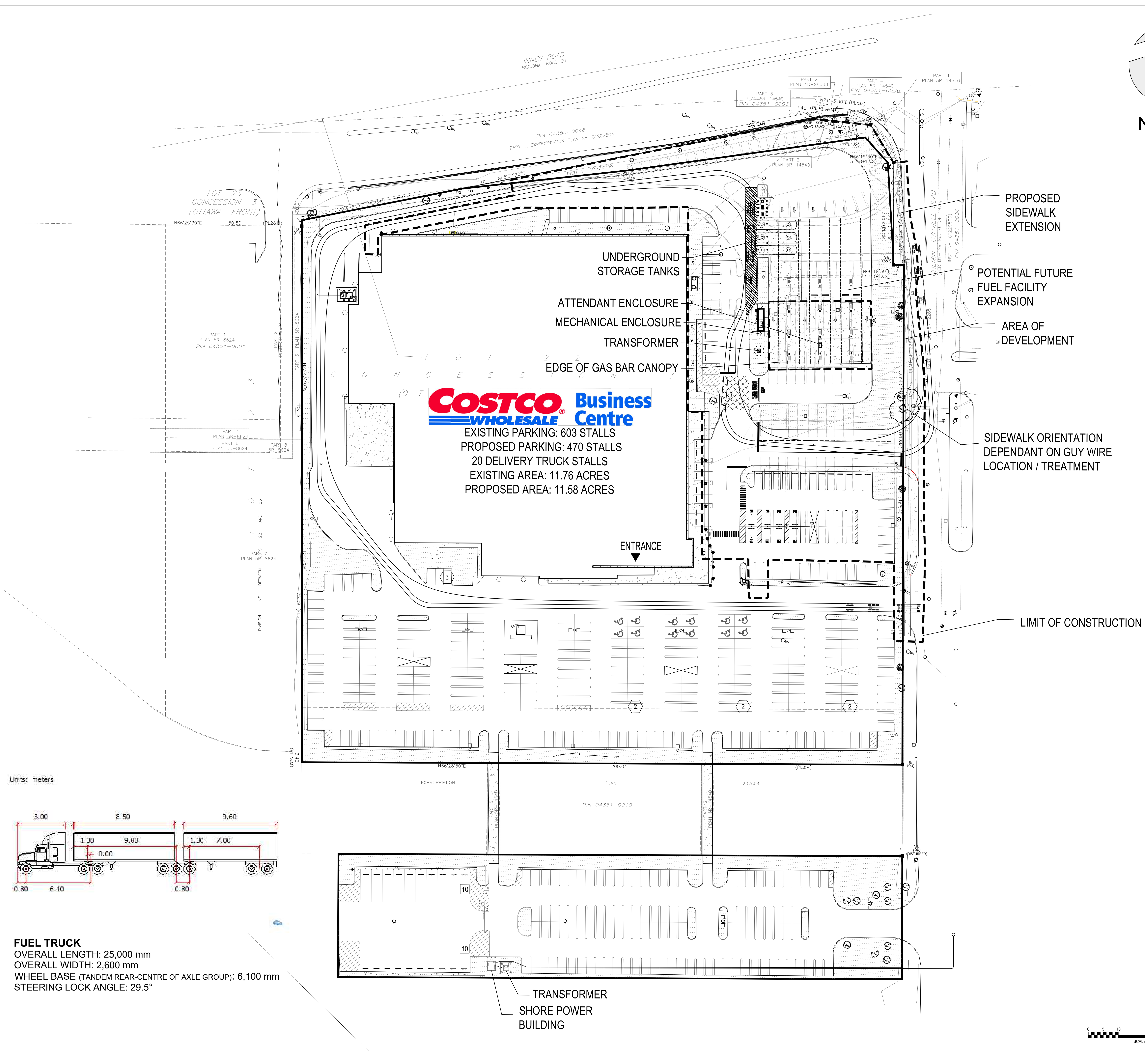
REVISIONS	BY	DATE	APPR.

ISSUED FOR APPROVAL, NOT FOR CONSTRUCTION  
 ALL PREVIOUS ISSUES OF THIS DRAWING ARE SUPERSEDED

**SHEET TITLE**  
**SWEPT PATH DIAGRAM**



DESIGNED CJM/KH	DRAWN CJM	CHECKED KH
SCALE 1:500	DATE MARCH 23, 2026	DWG. NUMBER SPD-1
PROJECT NUMBER 211-12161-00-P01		



FILENAME: M:\Info\Costco\Costco\2026\211-12161-00 - Costco Gloucester Business Centre Gas Bar\DWG\2026 03\Gloucester Business Centre Fuel SPD-10.dwg  
 PLOT DATE: Mar 24, 2026 - 3:13pm