

No.	REVISIONS TO DRAWING	BY	DATE	APPR.
7.	REVISED PER CITY COMMENTS	SM	03-20-2026	UJ
6.	ISSUED FOR SITE PLAN APPROVAL	SM	11-21-2025	UJ
5.	ISSUED FOR BID	SM	05-16-2025	UJ
4.	ISSUED FOR PERMIT/BID	SM	04-30-2025	UJ
3.	ISSUED FOR QA3	SM	04-21-2025	
2.	ISSUED FOR QA2	SM	04-09-2025	
1.	ISSUED FOR QA	NCW	03-27-2025	

ALL PREVIOUS ISSUES OF THIS DRAWING ARE SUPERSEDED

CLIENT: **COSTCO WHOLESALE**

MUNICIPALITY: **CITY OF OTTAWA**

PROJECT TITLE: **COSTCO GLOUCESTER GAS BAR**
 1900 CYRVILLE RD. ON, K1B 3V5

SHEET TITLE: **DETAILS**

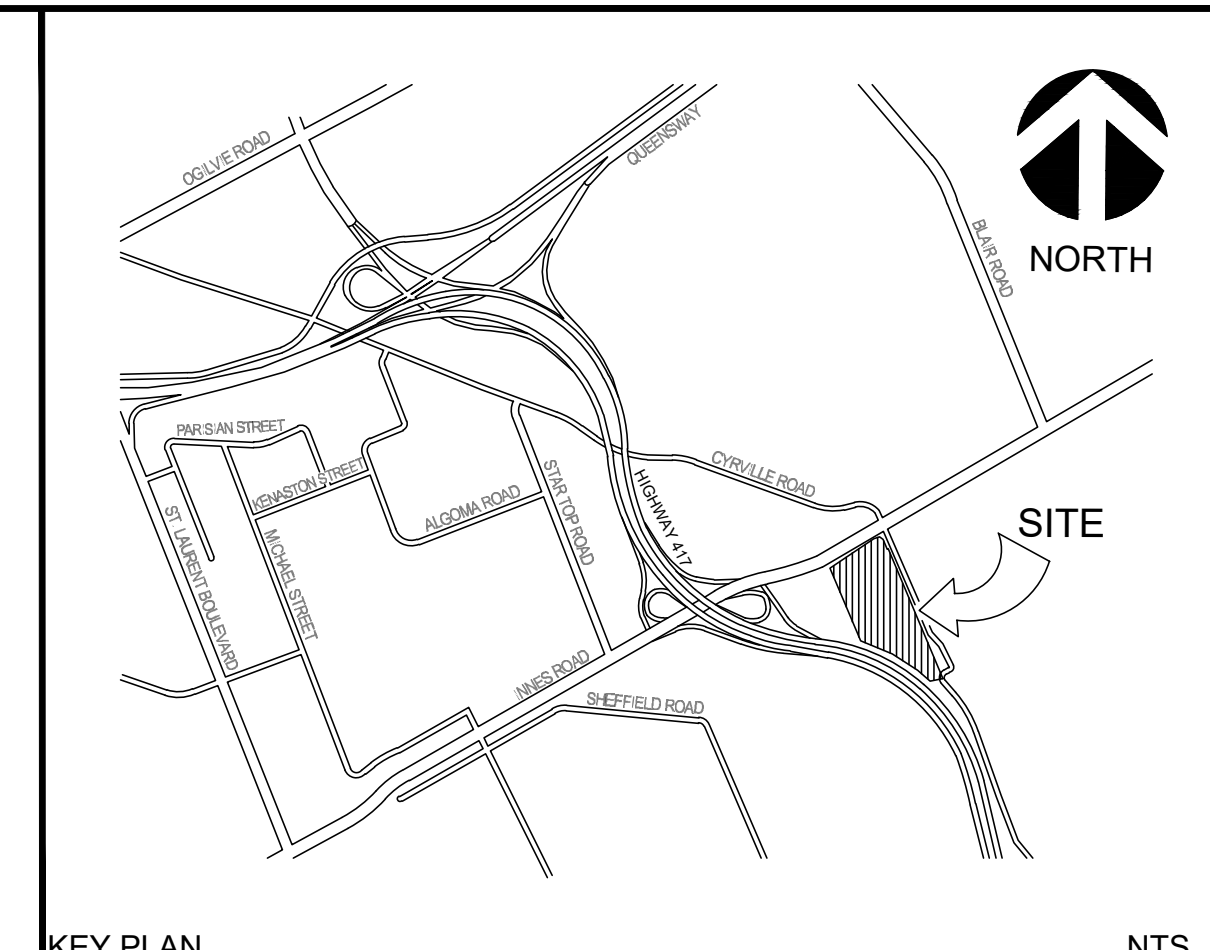
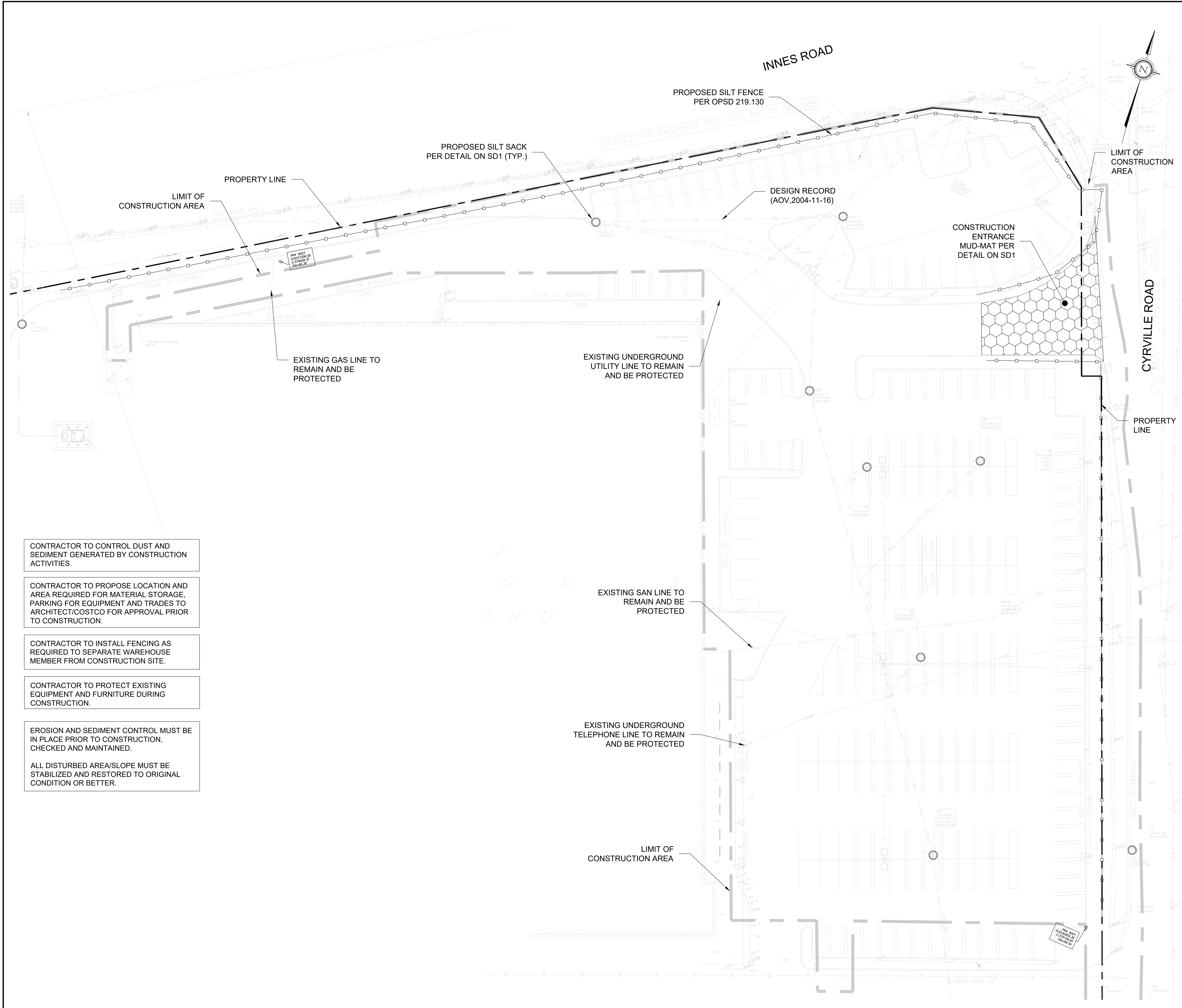
wsp

LICENSED PROFESSIONAL ENGINEER
 S. ANDRIK
 100631937
 2026-03-20
 PROVINCE OF ONTARIO

REGISTERED PROFESSIONAL DESIGNER
 I. M. JAFFERIE
 100164153
 2026-03-20
 PROVINCE OF ONTARIO

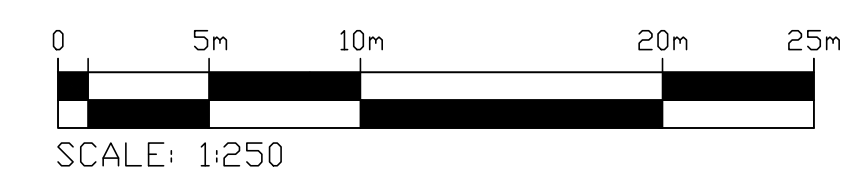
DESIGNED: S.M.	DRAWN: J.T.	CHECKED: I.J.
SCALE: AS NOTED	DATE: MARCH 2026	
PROJECT NUMBER: 211-12161	DWG. NUMBER: SD1	

FILENAME: C:\Users\CA1762\Documents\WSP\Canada\projects\AMER\OTL\OTL-001\Costco Gloucester Business Centre Gas Bar\WSP\Design\211-12161-SD1.dwg
 PLOTDATE: Mar 26, 2026 - 11:59am, C:\OTL\001



LEGEND

FFE	FINISHED FLOOR ELEVATION
—	BARRIER CURB OPSD 600.110
—	DEPRESSED CURB
—	CART STORAGE (SEE ARCH. DRAWINGS FOR DETAILS)
—	CONC. PAVING
—	DIRECTION OF DRAINAGE
□	LIGHT POLE (B.O.)
□	CATCHBASIN
○	CATCHBASIN MANHOLE
○	STORM MANHOLE
○	SANITARY MANHOLE
○	EMERGENCY SPILL SHUTOFF VALVE
○	WATER VALVE
○	HYDRANT
—	LIMIT OF CONSTRUCTION
—	PROPERTY LINE
○	EXISTING WATER VALVE
○	EXISTING GAS MANHOLE
○	CATCHBASIN SILT-SACK SEDIMENTATION CONTROL DEVICE
—	SILTATION FENCE



CONTRACTOR TO CONTROL DUST AND SEDIMENT GENERATED BY CONSTRUCTION ACTIVITIES.

CONTRACTOR TO PROPOSE LOCATION AND AREA REQUIRED FOR MATERIAL STORAGE, PARKING FOR EQUIPMENT AND TRADES TO ARCHITECT/COSTCO FOR APPROVAL PRIOR TO CONSTRUCTION.

CONTRACTOR TO INSTALL FENCING AS REQUIRED TO SEPARATE WAREHOUSE MEMBER FROM CONSTRUCTION SITE.

CONTRACTOR TO PROTECT EXISTING EQUIPMENT AND FURNITURE DURING CONSTRUCTION.

EROSION AND SEDIMENT CONTROL MUST BE IN PLACE PRIOR TO CONSTRUCTION, CHECKED AND MAINTAINED.

ALL DISTURBED AREA/SLOPE MUST BE STABILIZED AND RESTORED TO ORIGINAL CONDITION OR BETTER.

No.	REVISIONS TO DRAWING	BY	DATE	APPR.
7.	REVISED PER CITY COMMENTS	SM	03-20-2026	I.J.
6.	ISSUED FOR SITE PLAN APPROVAL	SM	11-27-2025	I.J.
5.	ISSUED FOR BID	SM	05-16-2025	I.J.
4.	ISSUED FOR PERMIT/BID	SM	04-30-2025	I.J.
3.	ISSUED FOR QA3	SM	04-21-2025	
2.	ISSUED FOR QA2	SM	04-09-2025	
1.	ISSUED FOR QA	NCW	03-27-2025	

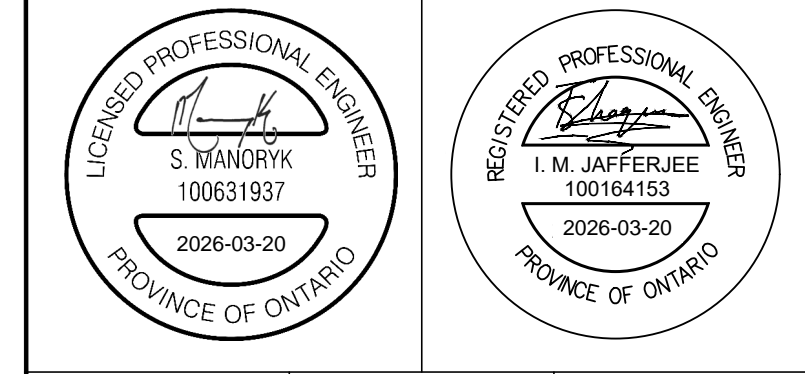
ALL PREVIOUS ISSUES OF THIS DRAWING ARE SUPERSEDED

CLIENT: **COSTCO WHOLESALE**

MUNICIPALITY: **CITY OF OTTAWA**

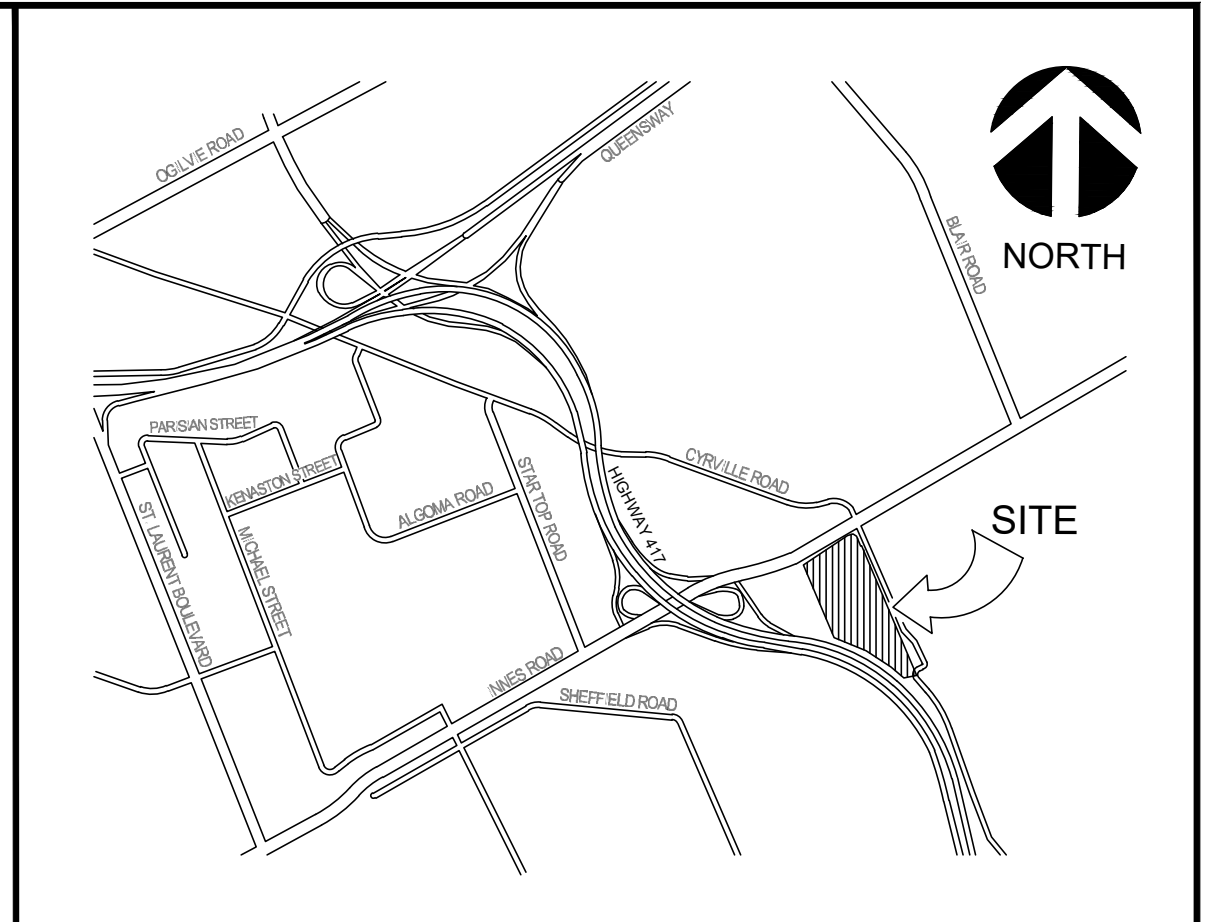
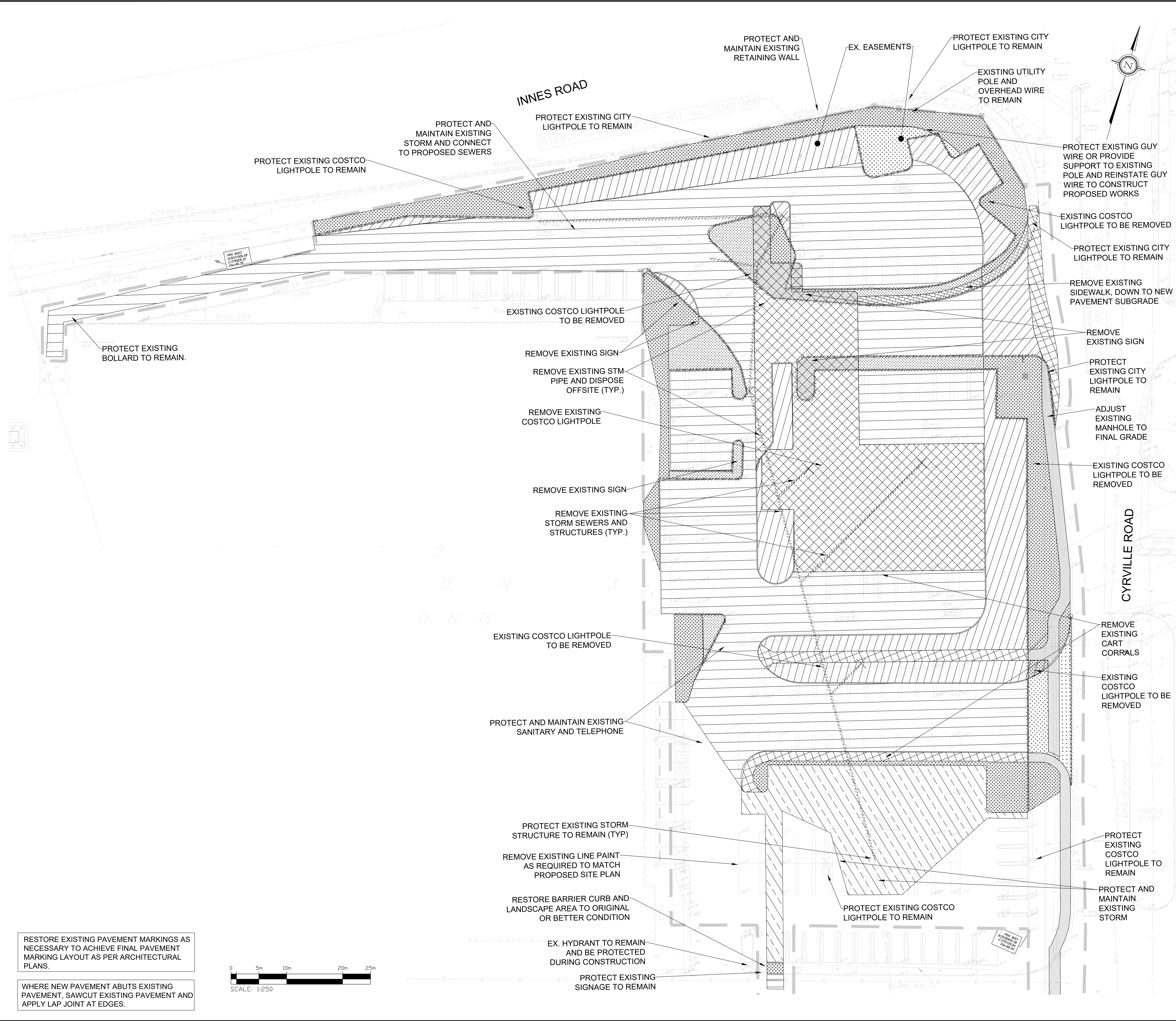
PROJECT TITLE: **COSTCO GLOUCESTER GAS BAR**
1900 CYRVILLE RD, ON, K1B 3V5

SHEET TITLE: **EROSION CONTROL PLAN**



DESIGNED S.M.	DRAWN J.T.	CHECKED I.J.
SCALE 1:250	DATE MARCH 2026	DWG. NUMBER ES1
PROJECT NUMBER 211-12161		

FILENAME: C:\Users\JJAFFERJEE\OneDrive - WSP\Documents\Projects\211-12161-00-Costco Gloucester Gas Bar\EROSION.dwg (2/11/2026) 1:250
 PLOT DATE: 2026-03-20 10:58:00 AM
 PLOT BY: JJAFFERJEE



LEGEND

	BARRIER CURB OPSD 600.110
	DEPRESSED CURB
	CART STORAGE
	EXISTING STORM SEWER
	EXISTING SANITARY SEWER
	EXISTING CATCHBASIN
	PROPOSED STORM MANHOLE
	PROPOSED CATCHBASIN
	LIMIT OF CONSTRUCTION
	PROPERTY LINE
	EXISTING WATER VALVE
	EXISTING GAS MANHOLE
	REMOVAL OF CURB AND SERVICING
	FULL DEPTH LANDSCAPE, PLANTING AND ADDITIONAL SUB-GRADE REMOVAL AND REPLACEMENT WITH HEAVY DUTY PAVEMENT
	FULL DEPTH LANDSCAPE, PLANTING AND ADDITIONAL SUB-GRADE REMOVAL AND REPLACEMENT WITH CONCRETE PAVEMENT
	FULL DEPTH LANDSCAPE, PLANTING AND ADDITIONAL SUB-GRADE REMOVAL AND REPLACEMENT WITH PROPOSED LANDSCAPE
	FULL DEPTH CONCRETE SIDEWALK AND ADDITIONAL SUBGRADE REMOVAL AND REPLACEMENT WITH HEAVY DUTY PAVEMENT
	FULL DEPTH CONCRETE SIDEWALK AND ADDITIONAL SUBGRADE REMOVAL AND REPLACEMENT WITH LANDSCAPE ISLAND
	FULL DEPTH ASPHALT PAVEMENT AND ADDITIONAL SUBGRADE REMOVAL AND REPLACEMENT WITH HEAVY DUTY PAVEMENT
	FULL DEPTH ASPHALT PAVEMENT AND ADDITIONAL SUBGRADE REMOVAL AND REPLACEMENT WITH LANDSCAPE ISLAND
	FULL DEPTH ASPHALT AND ADDITIONAL SUBGRADE REMOVAL AND REPLACEMENT WITH CONCRETE PAVEMENT
	FULL DEPTH ASPHALT PAVEMENT AND ADDITIONAL SUBGRADE REMOVAL AND REPLACEMENT WITH LIGHT DUTY PAVEMENT

No.	REVISIONS TO DRAWING	BY	DATE	APPR.
8.	REVISED PER CITY COMMENTS	SM	03-20-2026	U
7.	ISSUED FOR SITE PLAN APPROVAL	SM	11-27-2025	U
6.	ISSUED FOR BID	SM	05-16-2025	U
5.	ISSUED FOR PERMIT/BID	SM	04-30-2025	U
4.	ISSUED FOR QA3	SM	04-21-2025	
3.	ISSUED FOR QA2	SM	04-09-2025	
2.	ISSUED FOR QA	NCW	03-27-2025	
1.	ISSUED FOR GREEN INK	NCW	02-18-2025	

ALL PREVIOUS ISSUES OF THIS DRAWING ARE SUPERSEDED

CLIENT

MUNICIPALITY

CITY OF OTTAWA

PROJECT TITLE

COSTCO GLOUCESTER
GAS BAR
1900 CYRVILLE RD, ON, K1B 3V5

SHEET TITLE

SITE REMOVAL PLAN

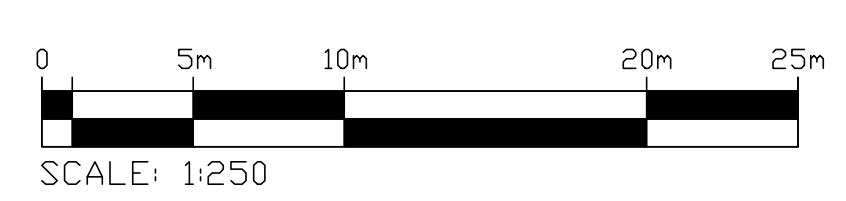
S. STANKOVIK
100631937
2026-03-20
PROVINCE OF ONTARIO

I.M. JAFFERJEE
100164153
2026-03-20
PROVINCE OF ONTARIO

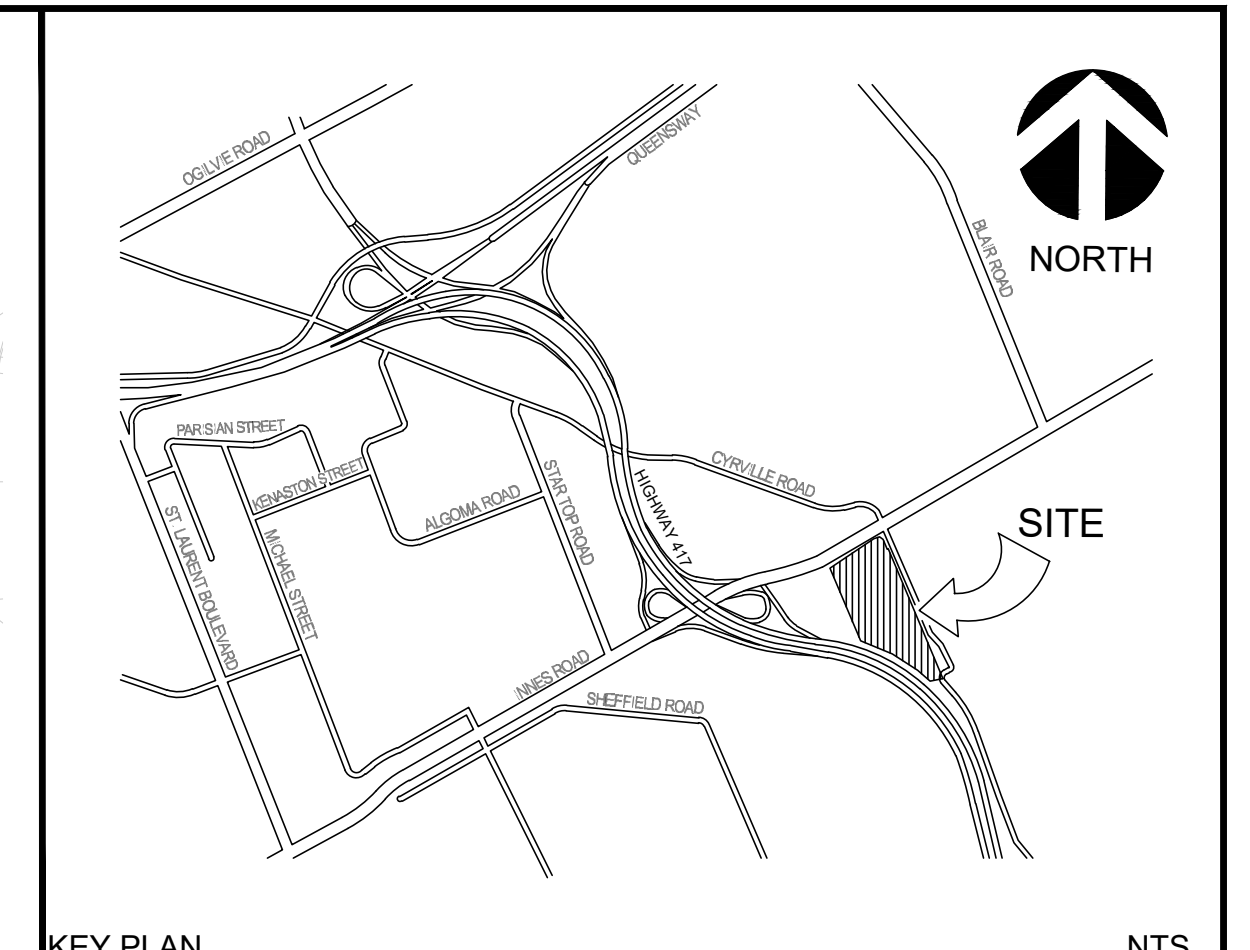
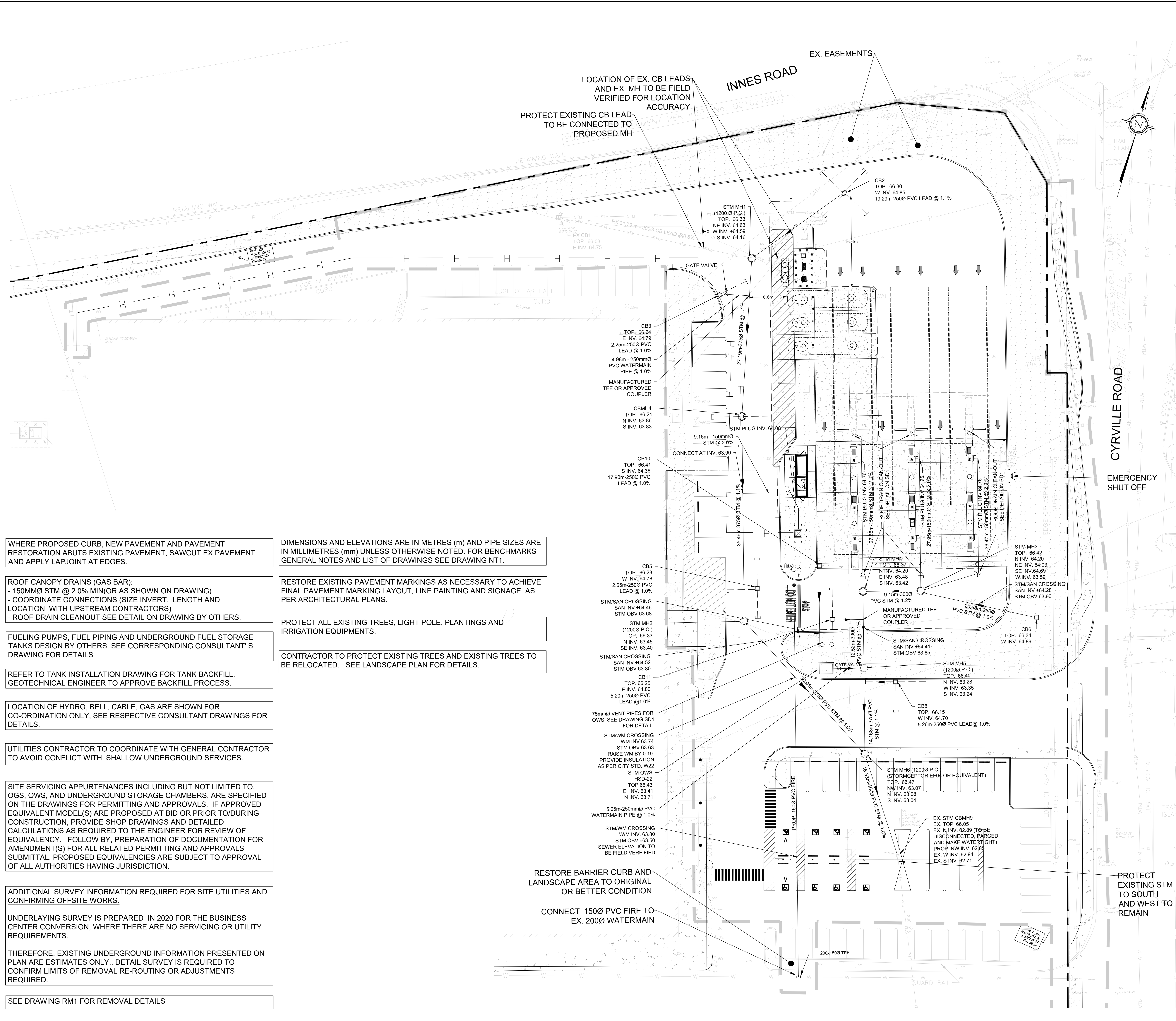
DESIGNED	S.M.	DRAWN	J.T.	CHECKED	I.J./N.C.W.
SCALE	1:250	DATE	APRIL 2025		
PROJECT NUMBER	211-12161			DWG. NUMBER	RM1

RESTORE EXISTING PAVEMENT MARKINGS AS NECESSARY TO ACHIEVE FINAL PAVEMENT MARKING LAYOUT AS PER ARCHITECTURAL PLANS.

WHERE NEW PAVEMENT ABUTS EXISTING PAVEMENT, SAWCUT EXISTING PAVEMENT AND APPLY LAP JOINT AT EDGES.



FILENAME: C:\Users\jta\OneDrive\Documents\2025\Projects\211-12161-Costco Gloucester Gas Bar\211-12161-001.dwg
 PLOT DATE: Mar 20, 2025 11:58am (GMT-05:00)



LEGEND

	LIMIT OF CONSTRUCTION
	PROPERTY LINE
	FINISHED FLOOR ELEVATION
	BARRIER CURB OPSD 600.110
	DEPRESSED CURB
	CART STORAGE
	EXISTING STORM SEWER
	EXISTING SANITARY SEWER
	EXISTING TELECOM. CABLE
	EXISTING CATCHBASIN
	EXISTING MANHOLE
	EXISTING WATER VALVE
	EXISTING GAS MANHOLE
	REMOVALS
	EXISTING LIGHT POLE
	PROPOSED STORM MANHOLE
	PROPOSED STORM CATCHBASIN MANHOLE
	PROPOSED CATCHBASIN
	PROPOSED WATER VALVE
	PROPOSED FIRE HYDRANT
	PROPOSED SUBDRAIN
	PROPOSED ROAD PAINTING
	GAS BAR CANOPY
	CONCRETE SIDEWALK
	LANDSCAPE AREA

0 5m 10m 20m 25m
SCALE: 1:250

WHERE PROPOSED CURB, NEW PAVEMENT AND PAVEMENT RESTORATION ABUTS EXISTING PAVEMENT, SAWCUT EX PAVEMENT AND APPLY LAPJOINT AT EDGES.

ROOF CANOPY DRAINS (GAS BAR):
- 150MMØ STM @ 2.0% MIN (OR AS SHOWN ON DRAWING).
- COORDINATE CONNECTIONS (SIZE INVERT, LENGTH AND LOCATION WITH UPSTREAM CONTRACTORS)
- ROOF DRAIN CLEANOUT SEE DETAIL ON DRAWING BY OTHERS.

FUELING PUMPS, FUEL PIPING AND UNDERGROUND FUEL STORAGE TANKS DESIGN BY OTHERS. SEE CORRESPONDING CONSULTANT'S DRAWING FOR DETAILS

REFER TO TANK INSTALLATION DRAWING FOR TANK BACKFILL. GEOTECHNICAL ENGINEER TO APPROVE BACKFILL PROCESS.

LOCATION OF HYDRO, BELL, CABLE, GAS ARE SHOWN FOR CO-ORDINATION ONLY, SEE RESPECTIVE CONSULTANT DRAWINGS FOR DETAILS.

UTILITIES CONTRACTOR TO COORDINATE WITH GENERAL CONTRACTOR TO AVOID CONFLICT WITH SHALLOW UNDERGROUND SERVICES.

SITE SERVICING APPURTENANCES INCLUDING BUT NOT LIMITED TO, OGS, OWS, AND UNDERGROUND STORAGE CHAMBERS, ARE SPECIFIED ON THE DRAWINGS FOR PERMITTING AND APPROVALS. IF APPROVED EQUIVALENT MODEL(S) ARE PROPOSED AT BID OR PRIOR TO/DURING CONSTRUCTION, PROVIDE SHOP DRAWINGS AND DETAILED CALCULATIONS AS REQUIRED TO THE ENGINEER FOR REVIEW OF EQUIVALENCY. FOLLOW BY PREPARATION OF DOCUMENTATION FOR AMENDMENT(S) FOR ALL RELATED PERMITTING AND APPROVALS SUBMITTAL. PROPOSED EQUIVALENCIES ARE SUBJECT TO APPROVAL OF ALL AUTHORITIES HAVING JURISDICTION.

ADDITIONAL SURVEY INFORMATION REQUIRED FOR SITE UTILITIES AND CONFIRMING OFFSITE WORKS.

UNDERLAYING SURVEY IS PREPARED IN 2020 FOR THE BUSINESS CENTER CONVERSION, WHERE THERE ARE NO SERVICING OR UTILITY REQUIREMENTS.

THEREFORE, EXISTING UNDERGROUND INFORMATION PRESENTED ON PLAN ARE ESTIMATES ONLY. DETAIL SURVEY IS REQUIRED TO CONFIRM LIMITS OF REMOVAL RE-ROUTING OR ADJUSTMENTS REQUIRED.

SEE DRAWING RM1 FOR REMOVAL DETAILS

DIMENSIONS AND ELEVATIONS ARE IN METRES (m) AND PIPE SIZES ARE IN MILLIMETRES (mm) UNLESS OTHERWISE NOTED. FOR BENCHMARKS GENERAL NOTES AND LIST OF DRAWINGS SEE DRAWING NT.1.

RESTORE EXISTING PAVEMENT MARKINGS AS NECESSARY TO ACHIEVE FINAL PAVEMENT MARKING LAYOUT, LINE PAINTING AND SIGNAGE AS PER ARCHITECTURAL PLANS.

PROTECT ALL EXISTING TREES, LIGHT POLE, PLANTINGS AND IRRIGATION EQUIPMENTS.

CONTRACTOR TO PROTECT EXISTING TREES AND EXISTING TREES TO BE RELOCATED. SEE LANDSCAPE PLAN FOR DETAILS.

RESTORE BARRIER CURB AND LANDSCAPE AREA TO ORIGINAL OR BETTER CONDITION

CONNECT 150Ø PVC FIRE TO EX. 200Ø WATERMAIN

PROTECT EXISTING STM TO SOUTH AND WEST TO REMAIN

No.	REVISIONS TO DRAWING	BY	DATE	APPR.
6.	REVISED PER CITY COMMENTS	SM	03-20-2026	UJ
7.	ISSUED FOR SITE PLAN APPROVAL	SM	11-27-2025	UJ
8.	ISSUED FOR BID	SM	05-16-2025	UJ
9.	ISSUED FOR PERMIT/BID	SM	04-30-2025	UJ
4.	ISSUED FOR QA3	SM	04-21-2025	
3.	ISSUED FOR QA2	SM	04-09-2025	
2.	ISSUED FOR QA	NCW	03-27-2025	
1.	ISSUED FOR GREEN INK	NCW	02-19-2025	

CLIENT: **COSTCO WHOLESALE**

MUNICIPALITY: **CITY OF OTTAWA**

PROJECT TITLE: **COSTCO GLOUCESTER GAS BAR**
1900 CYRVILLE RD, ON, K1B 3V5

SHEET TITLE: **SITE SERVICING PLAN**

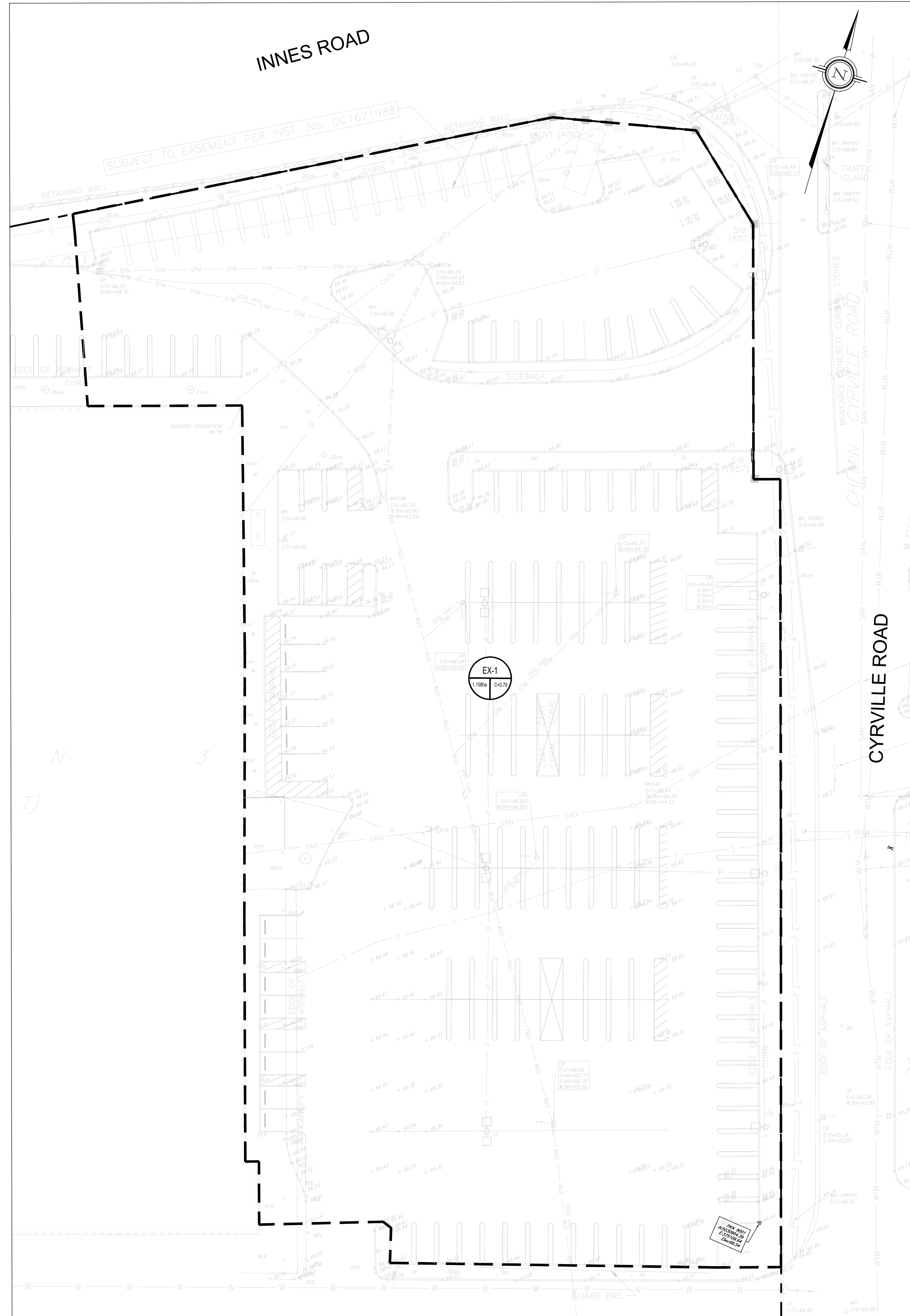
wsp

DESIGNED: S.M. DRAWN: J.T. CHECKED: I.J.

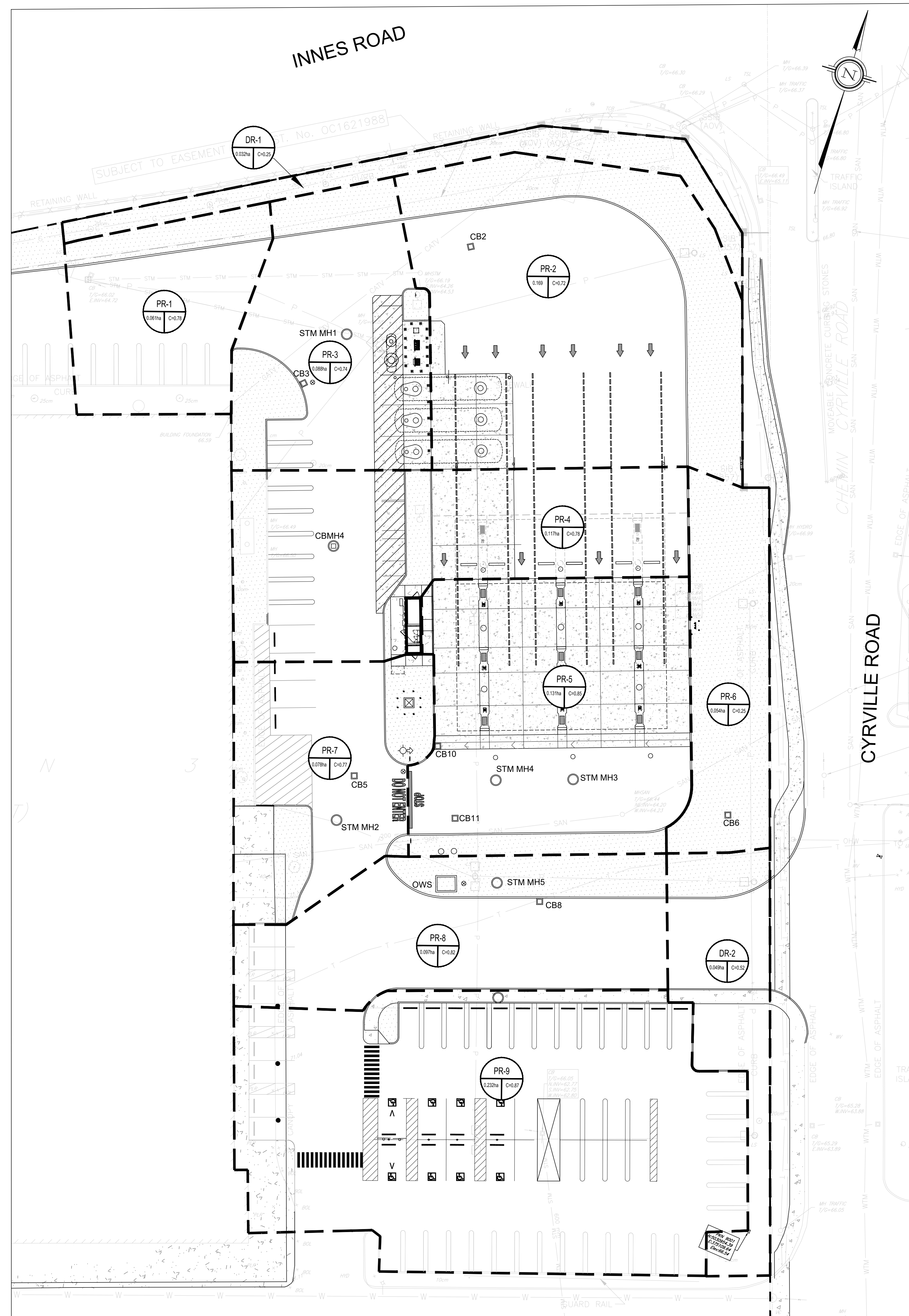
SCALE: 1:250 DATE: MARCH 2026

PROJECT NUMBER: 211-12161 DWG NUMBER: SS1

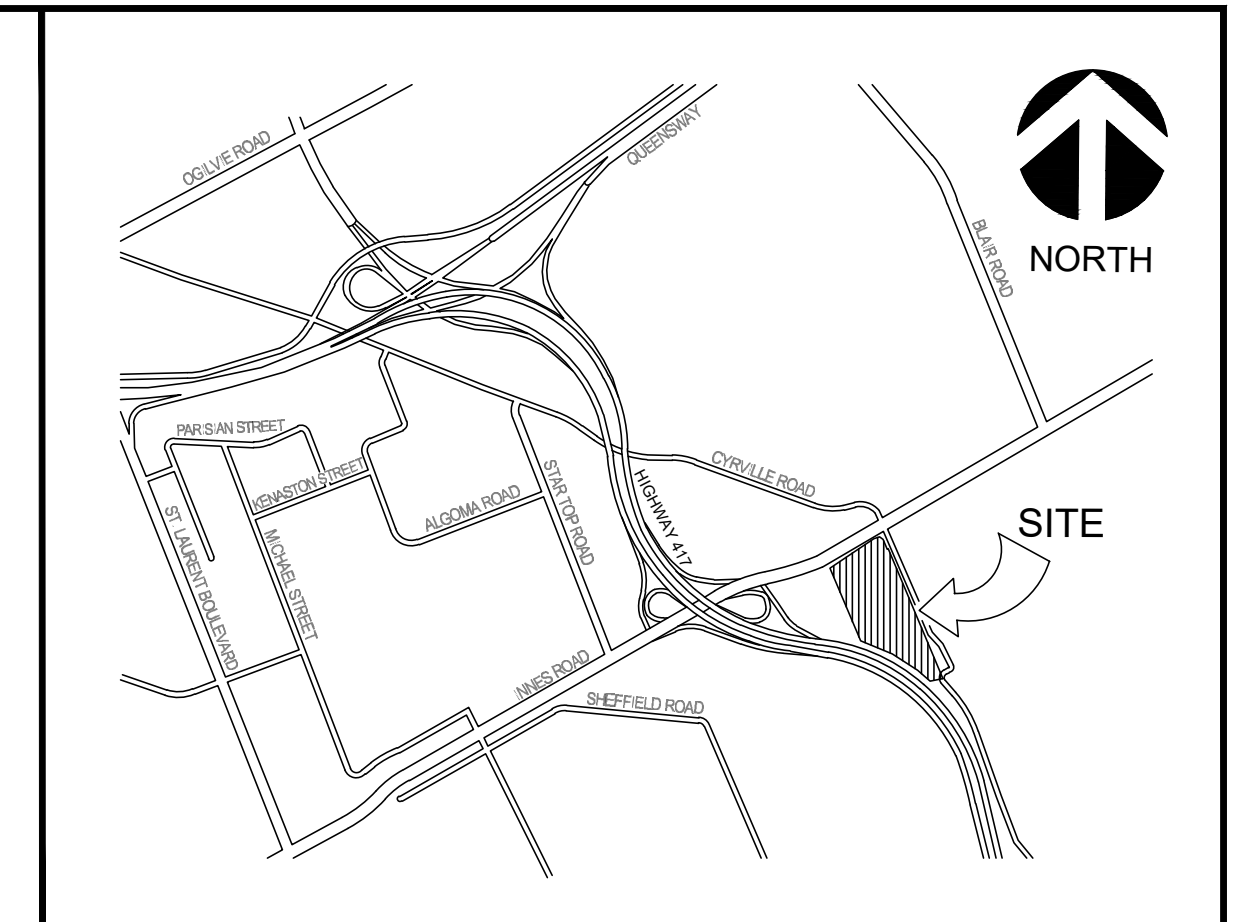
FILENAME: C:\Users\J.TAFFE\OneDrive - City of Ottawa\Documents\Business Center\Business Center\211-12161_SSI_Site Plan.dwg
PLOTDATE: Mar 20, 2026 10:20 AM CDT/EST



1 EXISTING DRAINAGE AREA PLAN
SCALE: 1:300



2 PROPOSED DRAINAGE AREA PLAN
SCALE: 1:300



KEY PLAN NTS

LEGEND

- FFE FINISHED FLOOR ELEVATION
- BARRIER CURB OPSD 600.110
- DEPRESSED CURB
- CART STORAGE (SEE ARCH. DRAWINGS FOR DETAILS)
- CONC. PAVING
- LIGHT POLE (B.O.)
- CB CATCHBASIN
- CATCHBASIN MANHOLE
- STORM MANHOLE
- SANITARY MANHOLE
- EMERGENCY SPILL SHUTOFF VALVE
- WATER VALVE
- ◇ HYDRANT
- PROPERTY LINE
- EXISTING WATER VALVE
- EXISTING GAS MANHOLE
- GAS BAR CANOPY
- DRAINAGE AREA BOUNDARY
- DRAINAGE AREA NAME
- RUNOFF COEFFICIENT

AREA IN HECTARES:

- CONCRETE SIDEWALK
- LANDSCAPE AREA

0 5m 10m 20m 30m
SCALE: 1:300

No.	REVISIONS TO DRAWING	BY	DATE	APPR.
7.	REVISED PER CITY COMMENTS	SM	03-20-2026	IJ
6.	ISSUED FOR SITE PLAN APPROVAL	SM	11-27-2025	IJ
5.	ISSUED FOR BID	SM	05-16-2025	IJ
4.	ISSUED FOR PERMIT/BID	SM	04-30-2025	IJ
3.	ISSUED FOR QA3	SM	04-21-2025	
2.	ISSUED FOR QA2	SM	04-09-2025	
1.	ISSUED FOR QA	NCW	03-27-2025	

ALL PREVIOUS ISSUES OF THIS DRAWING ARE SUPERSEDED

CLIENT: **COSTCO WHOLESALE**

MUNICIPALITY: **CITY OF OTTAWA**

PROJECT TITLE: **COSTCO GLOUCESTER GAS BAR**
1900 CYRVILLE RD, ON, K1B 3V5

SHEET TITLE: **DRAINAGE AREA PLAN**



DESIGNED: S.M. DRAWN: J.T. CHECKED: I.J.

SCALE: 1:250 DATE: MARCH 2026

PROJECT NUMBER: 211-12161 DWG NUMBER: ST1

REGISTERED PROFESSIONAL ENGINEER
S. STANORZYK
100631937
2026-03-20
PROVINCE OF ONTARIO

REGISTERED PROFESSIONAL ENGINEER
I.M. JAFFERJEE
100164153
2026-03-20
PROVINCE OF ONTARIO

FILENAME: C:\Users\jcaffee\OneDrive - WSP Canada\projects\116161\116161-000\Drawings\Business Center Gas Bar\DWG\211-12161-ST1.dwg
 PLOT DATE: Mar 20, 2026 12:10pm CDT/EST