

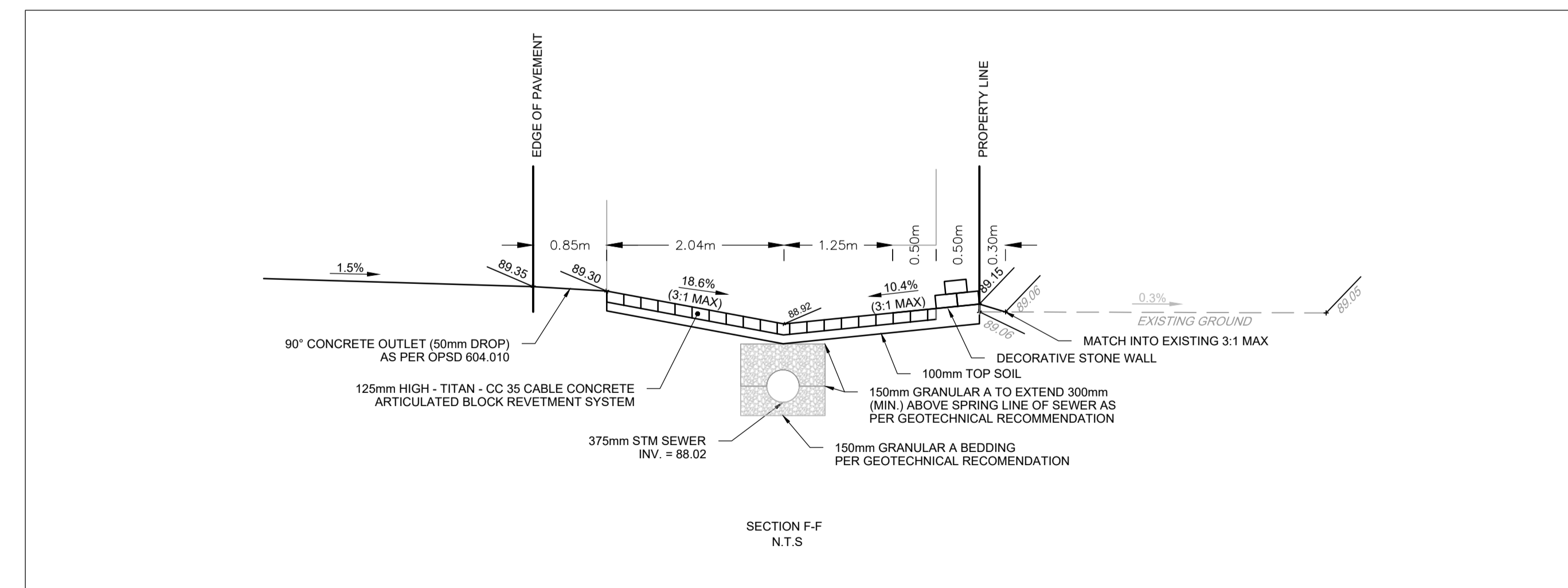
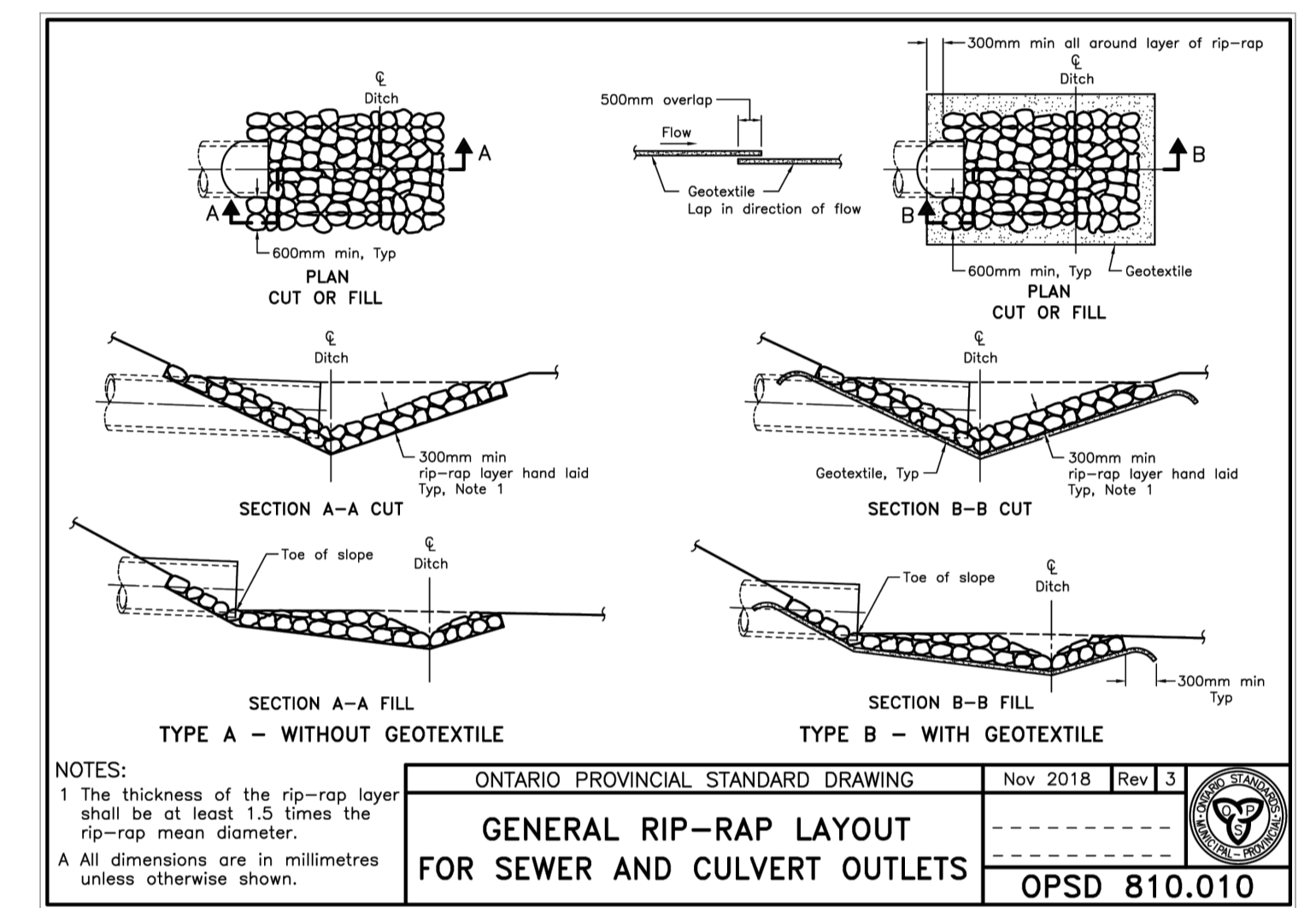
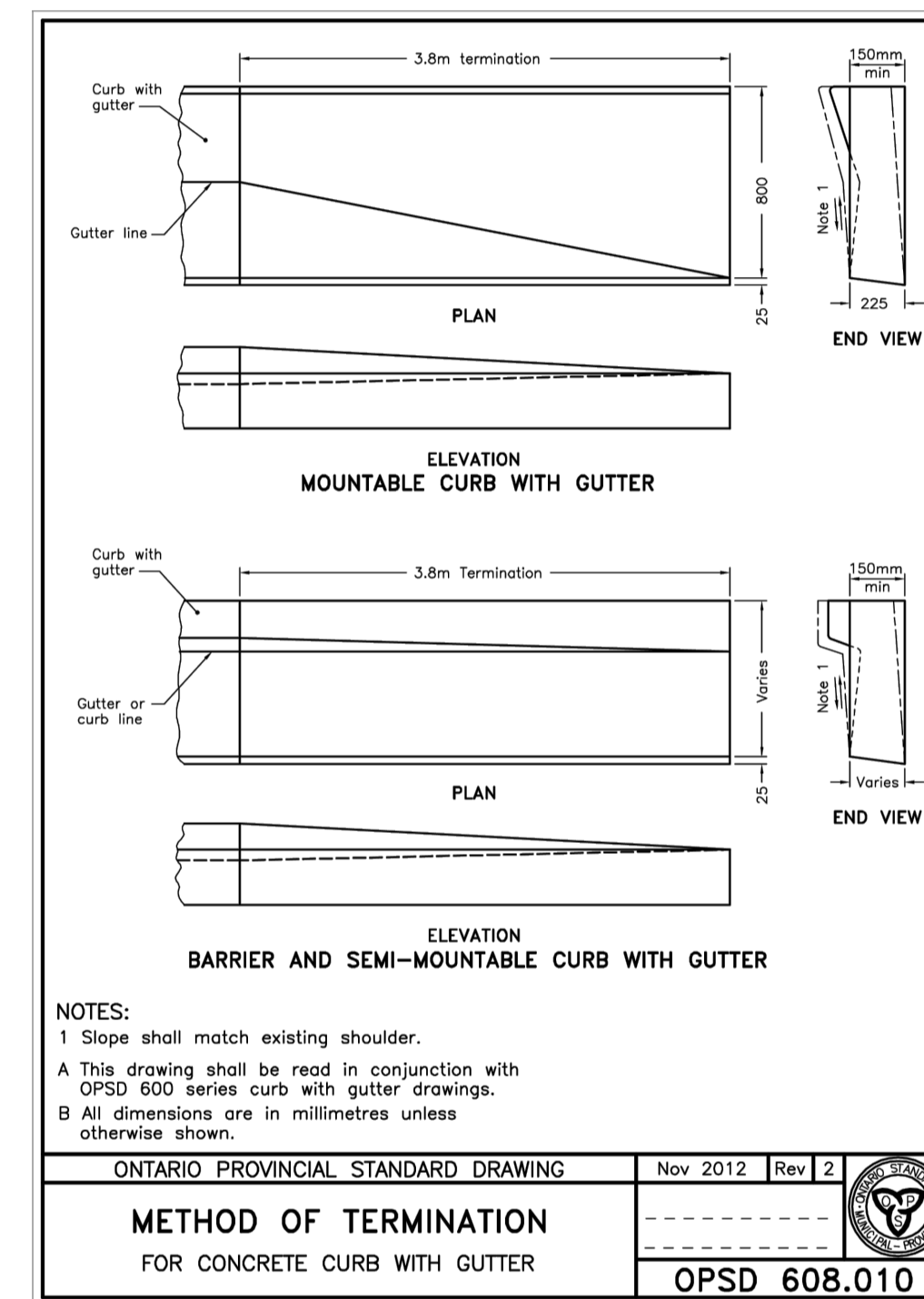
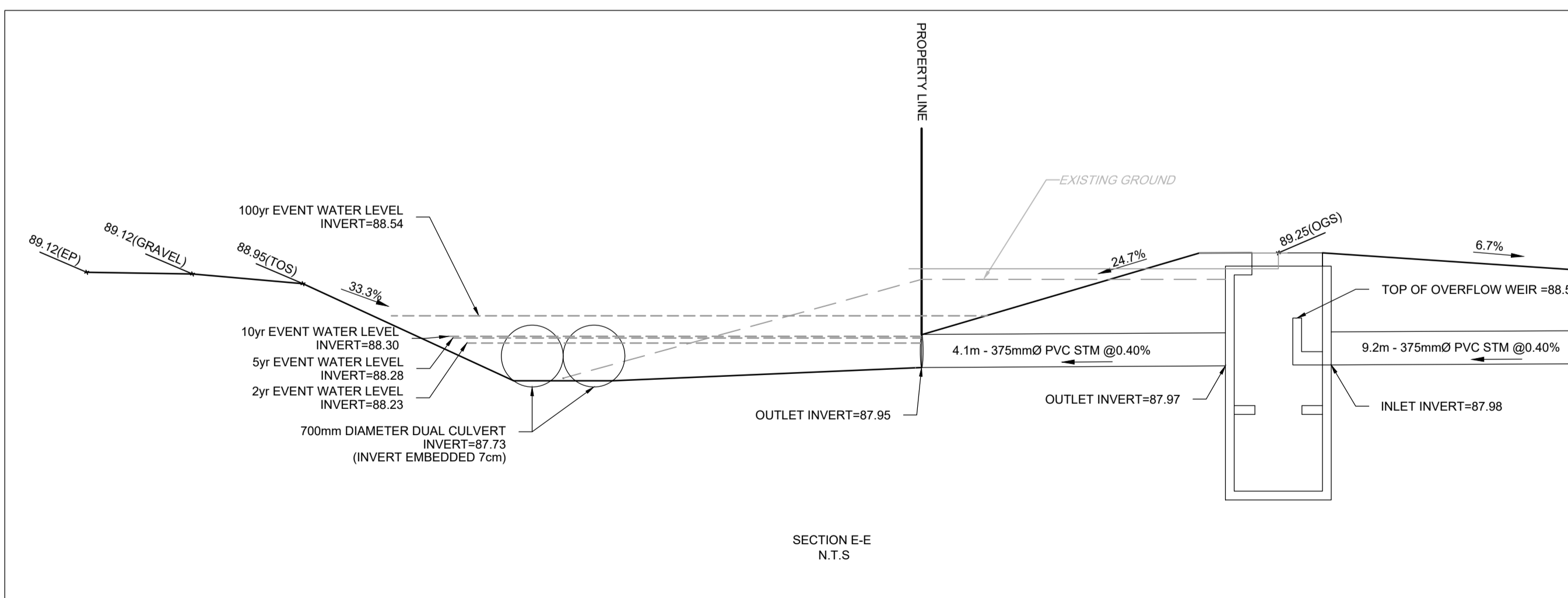
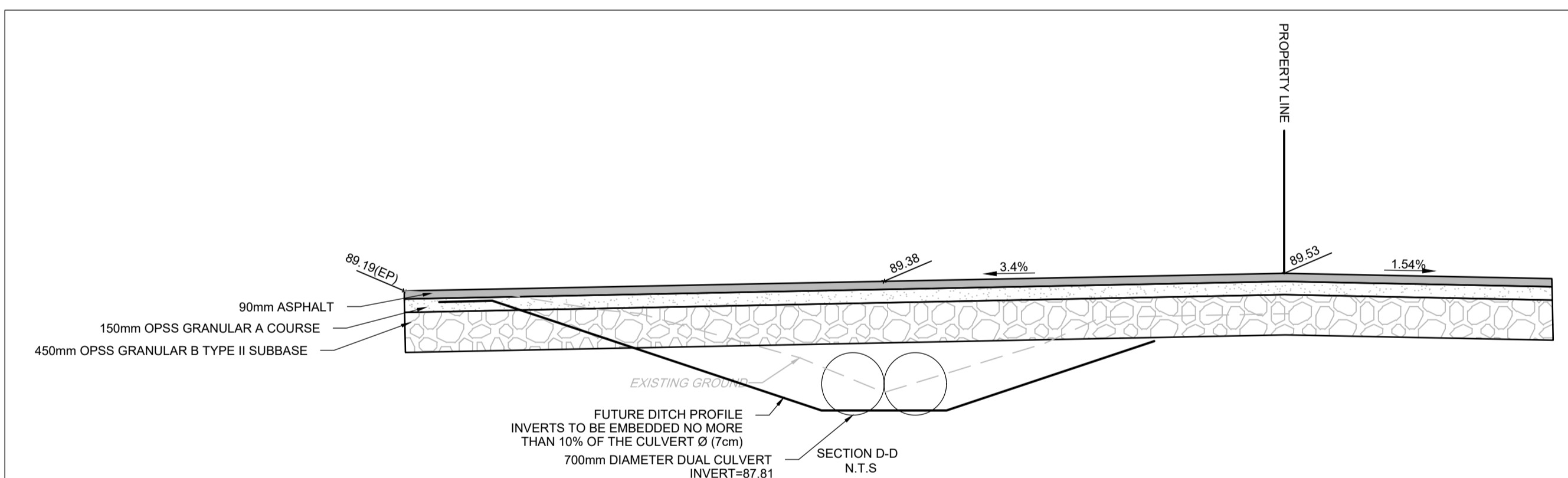
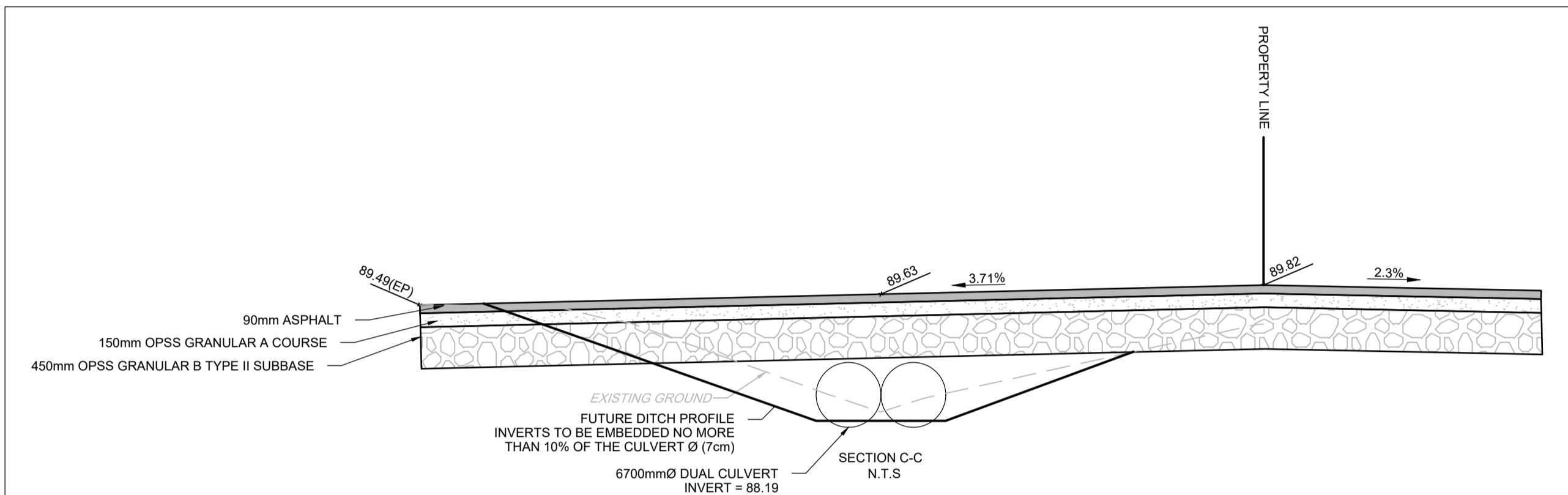
**PAVEMENT STRUCTURE:**

CAR ONLY PARKING AREA  
 50mm SUPERPAVE 12.5 SURFACE COURSE  
 150mm OPSS GRANULAR A BASE COURSE  
 300mm OPSS GRANULAR B TYPE II SUBBASE

ACCESS LANES  
 40mm SUPERPAVE 12.5 SURFACE COURSE  
 50mm SUPERPAVE 19.0 BINDER COURSE  
 150mm OPSS GRANULAR A BASE COURSE  
 450mm OPSS GRANULAR B TYPE II SUBBASE

**GRAVEL STRUCTURE:**

300mm OPSS GRANULAR A BASE COURSE  
 450mm OPSS GRANULAR B TYPE II SUBBASE



**NOTE:**  
 THE POSITION OF ALL POLE LINES, CONDUITS, WATERMANS, SEWERS AND OTHER UNDERGROUND AND OVERGROUND UTILITIES AND STRUCTURES IS NOT NECESSARILY SHOWN ON THE CONTRACT DRAWINGS, AND WHERE SHOWN, THE ACCURACY OF THE POSITION OF SUCH UTILITIES AND STRUCTURES IS NOT GUARANTEED. BEFORE STARTING WORK, DETERMINE THE EXACT LOCATION OF ALL SUCH UTILITIES AND STRUCTURES AND ASSUME ALL LIABILITY FOR DAMAGE TO THEM.

No.	REVISION	DATE	BY
3.	ISSUED FOR SITE PLAN APPROVAL	MAR 17/2026	GJM
2.	ISSUED TO ADDRESS CITY COMMENTS	FEB 06/2026	GJM
1.	ISSUED TO ADDRESS CITY COMMENTS	SEP 23/2025	GJM

SCALE	DESIGN	CHECKED	DRAWN	APPROVED
AS SHOWN	RJG	ARM	RJG	ARM
AS SHOWN	RJG	ARM	RJG	GJM

**FOR REVIEW ONLY**

PROFESSIONAL ENGINEER  
 G.J. MacDONALD  
 Mar 17, 2026  
 PROVINCE OF ONTARIO

**NOVATECH**  
 Engineers, Planners & Landscape Architects  
 Suite 200, 240 Michael Cowpland Drive  
 Ottawa, Ontario, Canada K2M 1P6  
 Telephone: (613) 254-9643  
 Facsimile: (613) 254-5867  
 Website: www.novatech-eng.com

LOCATION  
 CITY OF OTTAWA  
 541 SOMME STREET

DRAWING NAME  
**NOTES AND DETAILS PLAN**

PROJECT No. 124111  
 REV # 3  
 DRAWING No. 124111-ND

M:\2024\124111\CAD\Civil\124111-ND.dwg, ND, Mar 18, 2026 - 4:45pm, rjg

FILE # D07-12-25-0077 PLAN # 19398

**GENERAL NOTES:**

- COORDINATE AND SCHEDULE ALL WORK WITH OTHER TRADES AND CONTRACTORS.
- DETERMINE THE EXACT LOCATION, SIZE, MATERIAL AND ELEVATION OF ALL EXISTING UTILITIES PRIOR TO COMMENCING CONSTRUCTION. PROTECT AND ASSUME RESPONSIBILITY FOR ALL EXISTING UTILITIES WHETHER OR NOT SHOWN ON THIS DRAWING.
- OBTAIN ALL NECESSARY PERMITS AND APPROVALS FROM THE CITY OF OTTAWA BEFORE COMMENCING CONSTRUCTION.
- BEFORE COMMENCING CONSTRUCTION OBTAIN AND PROVIDE PROOF OF COMPREHENSIVE, ALL RISK AND OPERATIONAL LIABILITY INSURANCE FOR \$5,000,000.00. INSURANCE POLICY TO NAME OWNERS, ENGINEERS AND ARCHITECTS AS CO-INSURED.
- RESTORE ALL DISTURBED AREAS ON-SITE AND OFF-SITE, INCLUDING TRENCHES AND SURFACES ON PUBLIC ROAD ALLOWANCES TO EXISTING CONDITIONS OR BETTER TO THE SATISFACTION OF THE CITY OF OTTAWA AND ENGINEER.
- REMOVE FROM SITE ALL EXCESS EXCAVATED MATERIAL, ORGANIC MATERIAL AND DEBRIS UNLESS OTHERWISE INSTRUCTED BY ENGINEER. EXCAVATE AND REMOVE FROM SITE ANY CONTAMINATED MATERIAL. ALL CONTAMINATED MATERIAL SHALL BE DISPOSED OF AT A LICENSED LANDFILL FACILITY.
- ALL ELEVATIONS ARE GEODETIC AND ARE REFERRED TO THE CGVD28 GEODETIC DATUM. BEARINGS ARE REFERENCED TO THE CENTRAL MERIDIAN OF MTH ZONE 9, NAD83 (CSRS)(2010). REFER TO "PLAN OF SURVEY OF BLOCK 2, REGISTERED PLAN 4M-1388, CITY OF OTTAWA, BY ANNIS O'SULLIVAN VOLLBEKK LTD.

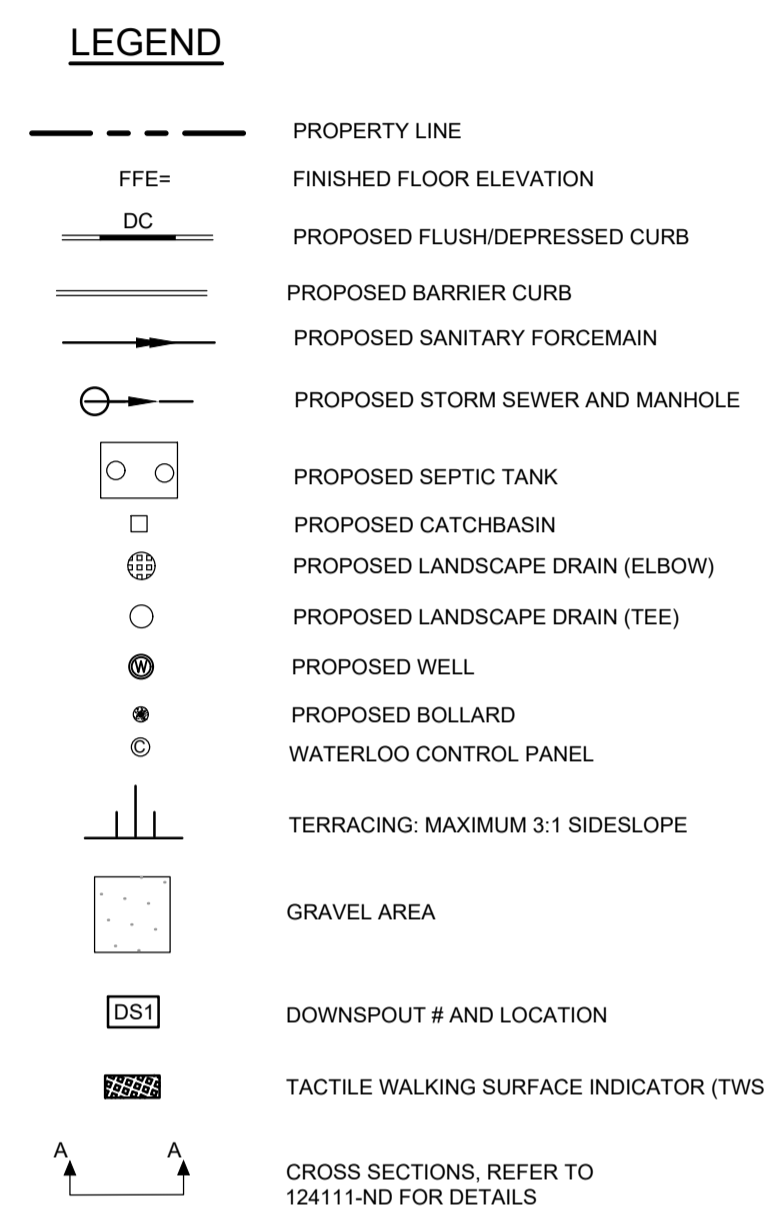
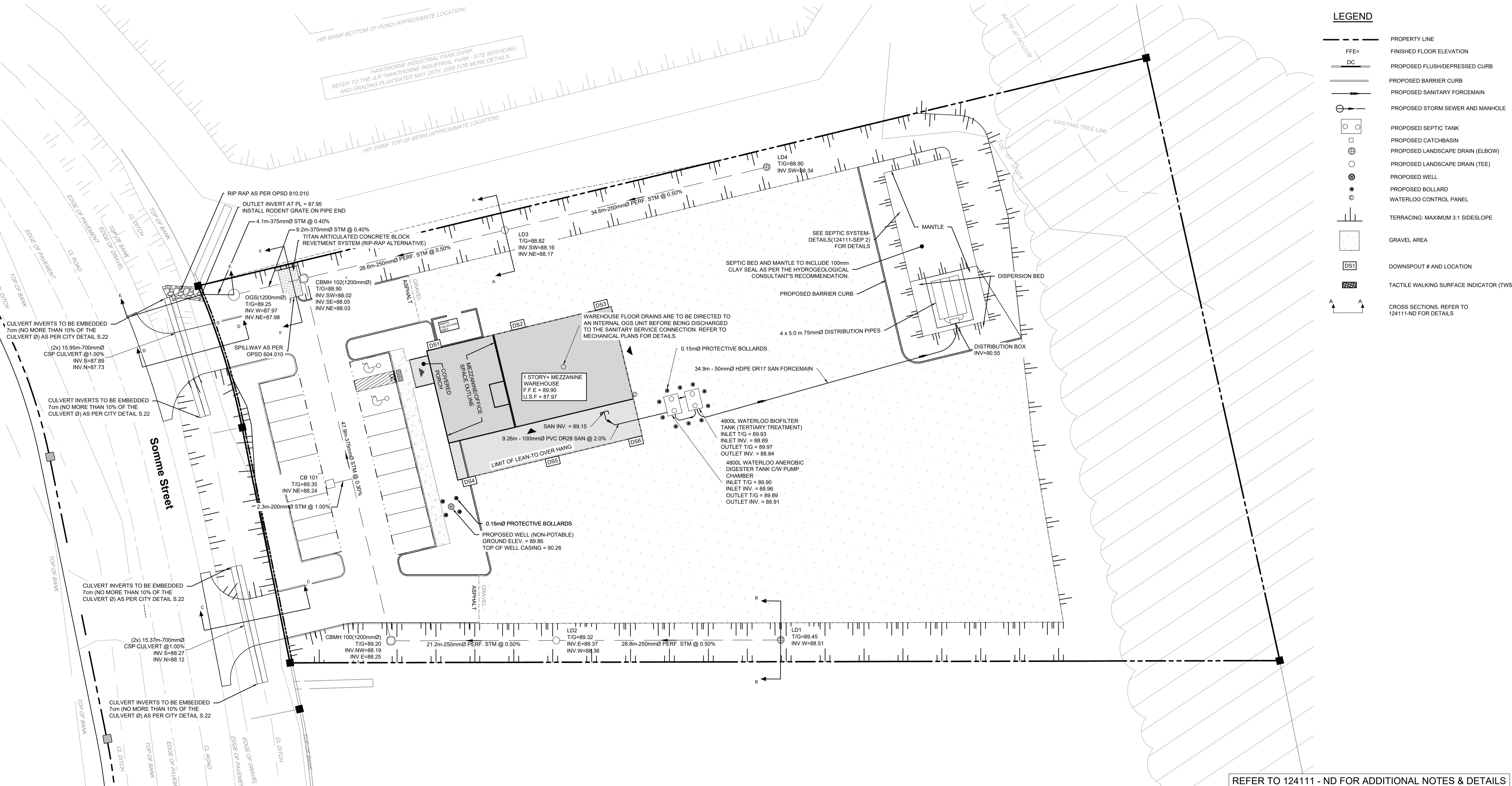
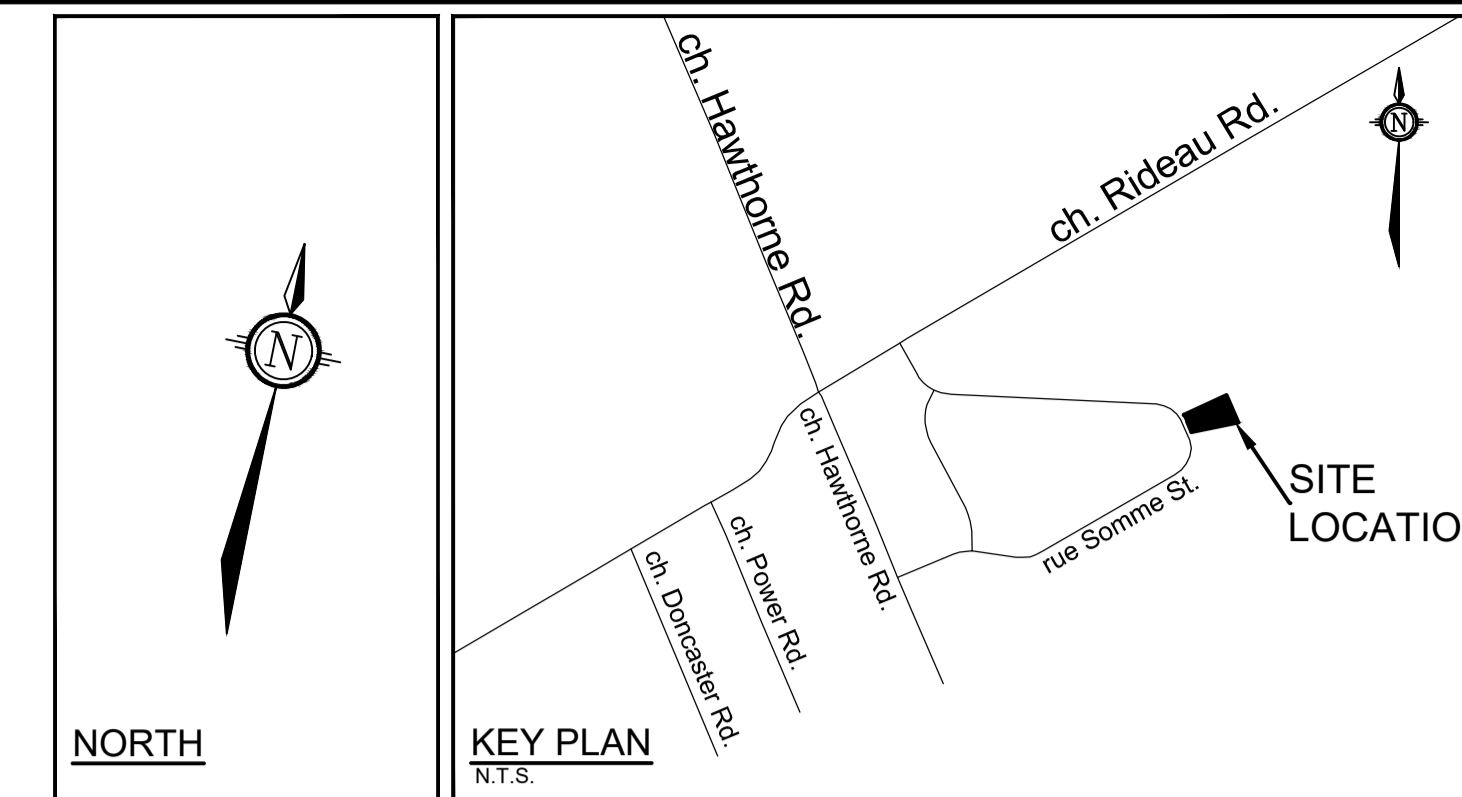
- REFER TO GEOTECHNICAL REPORT (No. PG7327-1, DATED AUGUST 21, 2025), PREPARED BY PATERSON GROUP FOR SUBSURFACE CONDITIONS, CONSTRUCTION RECOMMENDATIONS, AND GEOTECHNICAL INSPECTION REQUIREMENTS. THE GEOTECHNICAL CONSULTANT IS TO REVIEW ON-SITE CONDITIONS AFTER EXCAVATION PRIOR TO PLACEMENT OF GRANULAR MATERIAL.
- REFER TO THE HYDROGEOLOGICAL ASSESSMENT AND TERRAIN ANALYSIS REPORT - PH4991-LET.02REV02, DATED JANUARY 8, 2026 - PREPARED BY PATERSON GROUP FOR COMPLETE HYDROGEOLOGICAL AND WATER TREATMENT DETAILS.
- THE WELL WATER IS NOT SUITABLE FOR CONSUMPTION.
- REFER TO ARCHITECTURAL PLANS "TITAN ENVIRONMENTAL CONSTRUCTION DRAWINGS 2025-09-16" FOR BUILDING AREAS AND DIMENSIONS.
- REFER TO THE SERVICING AND STORMWATER MANAGEMENT REPORT (R: F-2024-116, DATED MARCH 13, 2026 BY NOVATECH ENGINEERING CONSULTANTS LTD.
- SAW CUT AND KEY GRIND ASPHALT AT ALL ROAD CUTS AND ASPHALT TIE IN POINTS AS PER CITY OF OTTAWA STANDARDS (R10).
- PROVIDE LINE/PARKING PAINTING.
- CONTRACTOR TO PROVIDE THE CONSULTANT WITH A GENERAL PLAN OF SERVICES INDICATING ALL SERVICING AS-BUILT INFORMATION SHOWN ON THIS PLAN, AS-BUILT INFORMATION MUST INCLUDE: PIPE MATERIAL, SIZES, LENGTHS, SLOPES, INVERT AND T/G ELEVATIONS, STRUCTURE LOCATIONS, AND ANY ALIGNMENT CHANGES, ETC.

**SEWER NOTES:**

- SPECIFICATIONS:
 

ITEM	SPEC. No.	REFERENCE
CATCHBASIN (600x600mm)	705.010	OPSD
STORM MANHOLE (12000)	701.010	OPSD
CB, FRAME & COVER	400.020	OPSD
STORM MH FRAME & COVER	401.010	OPSD
SEWER TRENCH -		
STORM SEWER		
CATCHBASIN LEAD	PVC DR 35	
LANDSCAPE DRAINS	S30 & S31	
LANDSCAPE PERFORATED PIPE	S29	
SANITARY FORCEMAIN	HDPE DR 17	
SANITARY SERVICE	PVC DR 28	
- INSULATE ALL PIPES (SAN/STM) THAT HAVE LESS THAN 2.0 m COVER WITH INSULATION. PROVIDE 150mm CLEARANCE BETWEEN PIPE AND INSULATION.
- SERVICES ARE TO BE CONSTRUCTED TO 1.0m FROM FACE OF BUILDING AT A MINIMUM SLOPE OF 1.0%.
- A MINIMUM OF 150mm OF OPSS GRANULAR A SHOULD BE PLACED FOR BEDDING FOR PRIVATE SEWER OR WATER PIPES WHEN PLACED ON A SOIL SUBGRADE. THE BEDDING SHOULD BE EXTENDED FROM THE SPRING LINE TO A MINIMUM OF 300mm ABOVE THE OVERTOP OF THE PIPE, AND SHOULD CONSIST OF OPSS GRANULAR A.
- PIPE BEDDING, COVER AND BACKFILL ARE TO BE COMPACTED TO AT LEAST 98% OF THE

- STANDARD PROCTOR MAXIMUM DRY DENSITY. THE USE OF CLEAR CRUSHED STONE AS A BEDDING LAYER SHALL NOT BE PERMITTED.
- FLEXIBLE CONNECTIONS ARE REQUIRED FOR CONNECTING PIPES TO MANHOLES (FOR EXAMPLE KOR-N-SEAL, PSX, POSITIVE SEAL AND DURASEAL). THE CONCRETE CRADLE FOR THE PIPE CAN BE ELIMINATED.
  - THE OWNER SHALL REQUIRE THAT THE SITE SERVICING CONTRACTOR PERFORM FIELD TESTS FOR QUALITY CONTROL OF ALL SANITARY SEWERS. LEAKAGE TESTING SHALL BE COMPLETED IN ACCORDANCE WITH OPSS 410.07.16, 410.07.18.04 AND 407.07.24. THE FIELD TESTS SHALL BE PERFORMED IN THE PRESENCE OF A CERTIFIED PROFESSIONAL ENGINEER WHO SHALL SUBMIT A CERTIFIED COPY OF THE TEST RESULTS.
  - STORM MANHOLES AND CBMHs ARE TO HAVE 300mm SUMPS UNLESS OTHERWISE INDICATED.
  - CONTRACTOR TO TELEVISION (CCTV) ALL PROPOSED SEWERS, 200mm OR GREATER PRIOR TO BASE COURSE ASPHALT (EXCLUDING 250mm PERFORATED PIPE). UPON COMPLETION OF CONTRACT, THE CONTRACTOR IS RESPONSIBLE TO FLUSH AND CLEAN ALL SEWERS & APPURTENANCES.

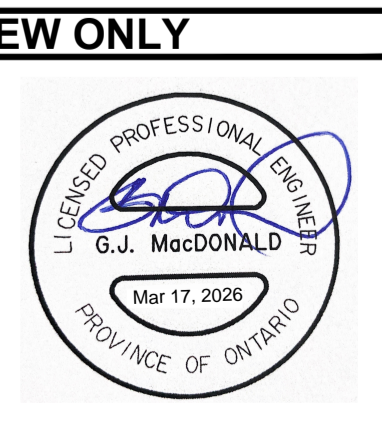


**NOTE:**  
THE POSITION OF ALL POLE LINES, CONDUITS, WATERMANS, SEWERS AND OTHER UNDERGROUND AND OVERGROUND UTILITIES AND STRUCTURES IS NOT NECESSARILY SHOWN ON THE CONTRACT DRAWINGS, AND WHERE SHOWN, THE ACCURACY OF THE POSITION OF SUCH UTILITIES AND STRUCTURES IS NOT GUARANTEED. BEFORE STARTING WORK, DETERMINE THE EXACT LOCATION OF ALL SUCH UTILITIES AND STRUCTURES AND ASSUME ALL LIABILITY FOR DAMAGE TO THEM.

No.	REVISION	DATE	BY
4.	ISSUED FOR SITE PLAN APPROVAL	MAR 17/2026	GJM
3.	ISSUED TO ADDRESS CITY COMMENTS	FEB 06/2026	GJM
2.	ISSUED TO ADDRESS CITY COMMENTS	SEP 23/2025	GJM
1.	ISSUED FOR SITE PLAN APPLICATION	JUN 03/2025	GJM

SCALE	
1:250	

DESIGN	
CHECKED	RJG
DRAWN	ARM
CHECKED	RJG
APPROVED	ARM
	GJM



**NOVATECH**  
Engineers, Planners & Landscape Architects  
Suite 200, 240 Michael Cowpland Drive  
Ottawa, Ontario, Canada K2M 1P6  
Telephone (613) 254-9643  
Facsimile (613) 254-5867  
Website www.novatech-eng.com

LOCATION  
CITY OF OTTAWA  
541 SOMME STREET

DRAWING NAME  
**GENERAL PLAN OF SERVICES**

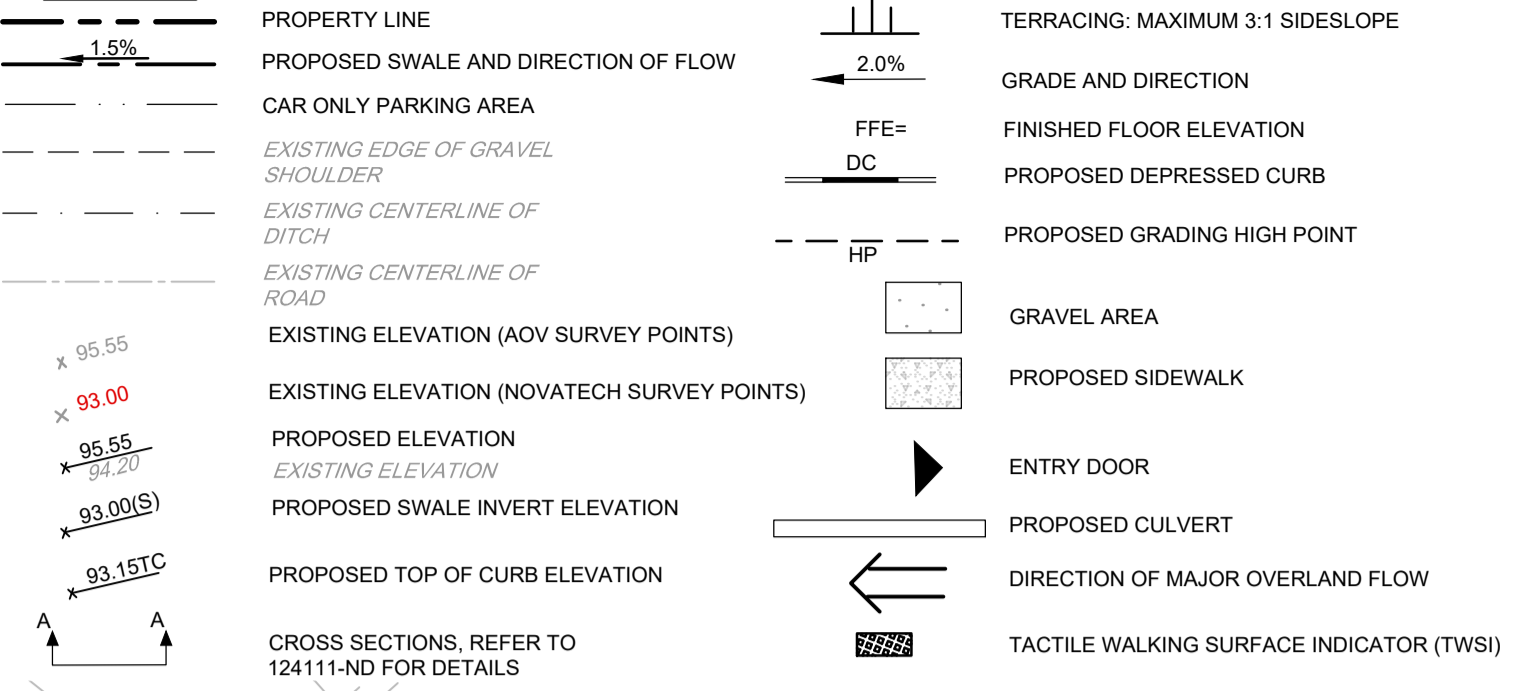
PROJECT No. 124111  
REV # 4  
DRAWING No. 124111-GP

REFER TO 124111 - ND FOR ADDITIONAL NOTES & DETAILS

M:\2024\124111\124111-GP.dwg, GP, Mar 13, 2026 - 3:04pm, rpsocd

FILE # D07-12-25-0077 PLAN # 19398

**LEGEND**



**GRADING NOTES:**

- ALL TOPSOIL, ORGANIC OR DELETERIOUS MATERIAL MUST BE ENTIRELY REMOVED FROM BENEATH THE PROPOSED PAVED AREAS AS DIRECTED BY THE SITE ENGINEER OR GEOTECHNICAL ENGINEER.
- EXPOSED SUBGRADES IN PROPOSED PAVED AREAS SHOULD BE PROOF ROLLED WITH A LARGE STEEL DRUM ROLLER AND INSPECTED BY THE GEOTECHNICAL ENGINEER PRIOR TO THE PLACEMENT OF GRANULARS.
- ANY SOFT AREAS EVIDENT FROM THE PROOF ROLLING SHOULD BE SUB-EXCAVATED AND REPLACED WITH SUITABLE MATERIAL THAT IS FROST COMPATIBLE WITH THE EXISTING SOILS AS RECOMMENDED BY THE GEOTECHNICAL ENGINEER.
- THE PAVEMENT GRANULAR BASE AND SUBBASE SHOULD BE PLACED IN 300mm THICK LIFTS AND COMPACTED TO A MINIMUM OF 99% OF THE MATERIAL'S SPMD USING SUITABLE COMPACTION EQUIPMENT.
- MINIMUM OF 2% GRADE FOR ALL GRASS AREAS UNLESS OTHERWISE NOTED.
- MAXIMUM TERRACING GRADE TO BE 3:1 UNLESS OTHERWISE NOTED.
- ALL GRADES BY CURBS ARE EDGE OF PAVEMENT GRADES UNLESS OTHERWISE INDICATED.
- ALL CURBS SHALL BE BARRIER CURB (150mm) UNLESS OTHERWISE NOTED AND CONSTRUCTED AS PER CITY OF OTTAWA STANDARDS (SC1.1).
- REFER TO LANDSCAPE PLAN FOR PLANTING AND OTHER LANDSCAPE FEATURE DETAILS.
- CONTRACTOR TO PROVIDE THE CONSULTANT WITH A GRADING PLAN INDICATING AS-BUILT ELEVATIONS OF ALL DESIGN GRADES SHOWN ON THIS PLAN.
- ALL ELEVATIONS ARE GEODETIC AND ARE REFERRED TO THE CGVD28 GEODETIC DATUM. THE SITE BENCHMARK IS LOCATED ON THE UNDERSIDE OF THE WELL CASING CAP AND IS ELEVATION 90.18m. BEARINGS ARE REFERENCED TO THE CENTRAL MERIDIAN OF MTM ZONE 9, NAD83 (CSRS)(2010). REFER TO "PLAN OF SURVEY OF BLOCK 2, REGISTERED PLAN 4M-1388, CITY OF OTTAWA, BY ANNIS O'SULLIVAN VOLLBEK LTD.
- ALL LANDSCAPE DRAIN T/G SHALL BE INSTALLED 5cm ABOVE THE BOTTOM OF SWALE ELEVATIONS TO PROMOTE INFILTRATION.
- THE PAVEMENT AND GRAVEL SURFACE STRUCTURES NOTED ON THIS PLAN ARE AS PER THE GEOTECHNICAL CONSULTANT'S RECOMMENDATION. REFER TO GEOTECHNICAL REPORT (No. PG7327-1 REV. 1, DATED AUGUST 21, 2025) FOR COMPLETE DETAILS.

**PAVEMENT STRUCTURE:**

CAR ONLY PARKING AREA  
 50mm SUPERPAVE 12.5 SURFACE COURSE  
 150mm OPSS GRANULAR A BASE COURSE  
 300mm OPSS GRANULAR B TYPE II SUBBASE

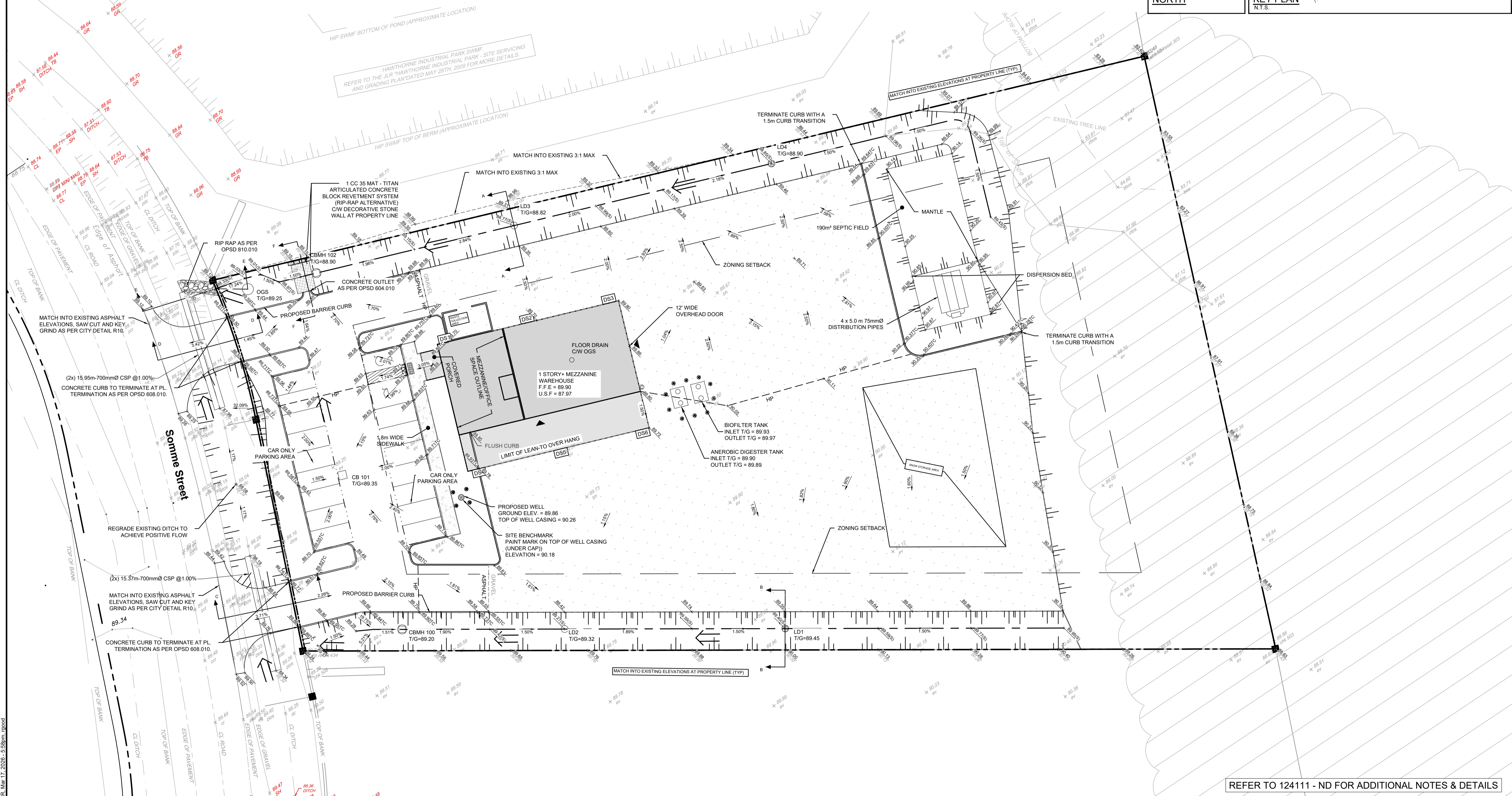
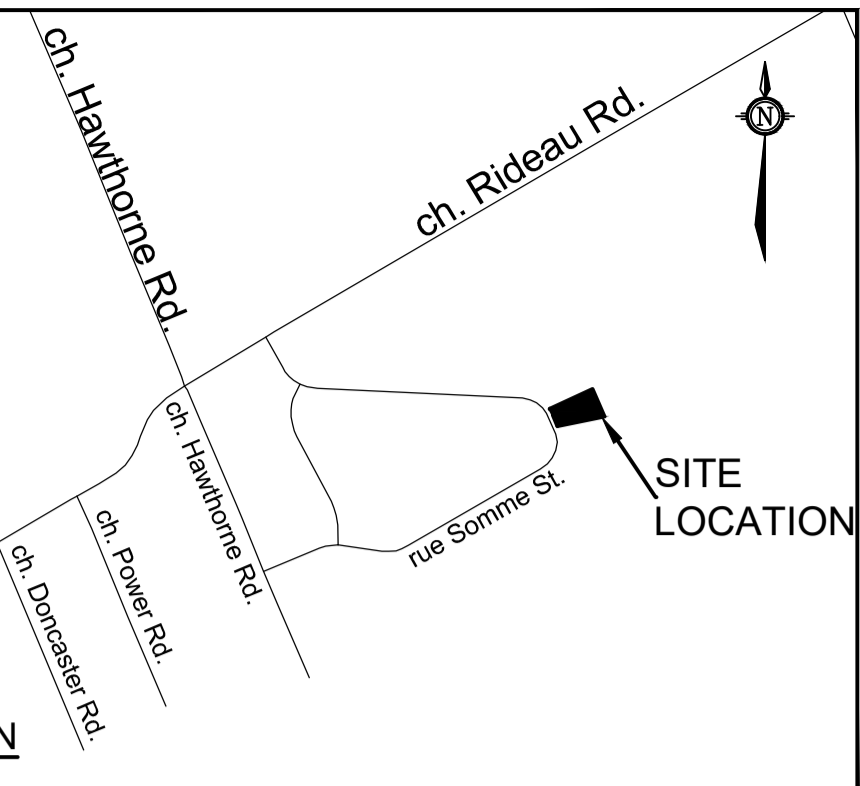
ACCESS LANES  
 40mm SUPERPAVE 12.5 SURFACE COURSE  
 50mm SUPERPAVE 19.0 BINDER COURSE  
 150mm OPSS GRANULAR A BASE COURSE  
 450mm OPSS GRANULAR B TYPE II SUBBASE

**GRAVEL STRUCTURE:**

300mm OPSS GRANULAR A BASE COURSE  
 450mm OPSS GRANULAR B TYPE II SUBBASE

NORTH

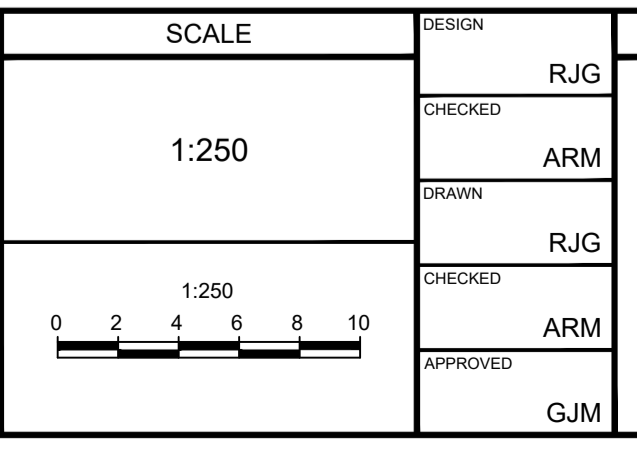
KEY PLAN  
 N.T.S.



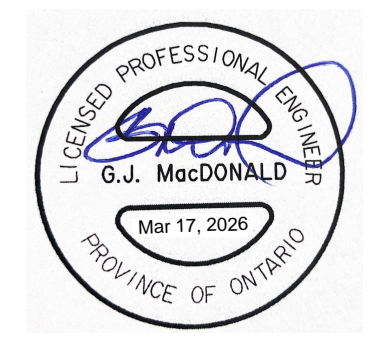
**NOTE:**  
 THE POSITION OF ALL POLE LINES, CONDUITS, WATERMANS, SEWERS AND OTHER UNDERGROUND AND OVERGROUND UTILITIES AND STRUCTURES IS NOT NECESSARILY SHOWN ON THE CONTRACT DRAWINGS, AND WHERE SHOWN, THE ACCURACY OF THE POSITION OF SUCH UTILITIES AND STRUCTURES IS NOT GUARANTEED. BEFORE STARTING WORK, DETERMINE THE EXACT LOCATION OF ALL SUCH UTILITIES AND STRUCTURES AND ASSUME ALL LIABILITY FOR DAMAGE TO THEM.

REFER TO 124111 - ND FOR ADDITIONAL NOTES & DETAILS

No.	REVISION	DATE	BY
4.	ISSUED FOR SITE PLAN APPROVAL	MAR 17/ 2026	GJM
3.	ISSUED TO ADDRESS CITY COMMENTS	FEB 06/ 2026	GJM
2.	ISSUED TO ADDRESS CITY COMMENTS	SEP 23/2025	GJM
1.	ISSUED FOR SITE PLAN APPLICATION	JUN 03/2025	GJM



DESIGN	FOR REVIEW ONLY
RJG	
ARM	
RJG	
ARM	
GJM	



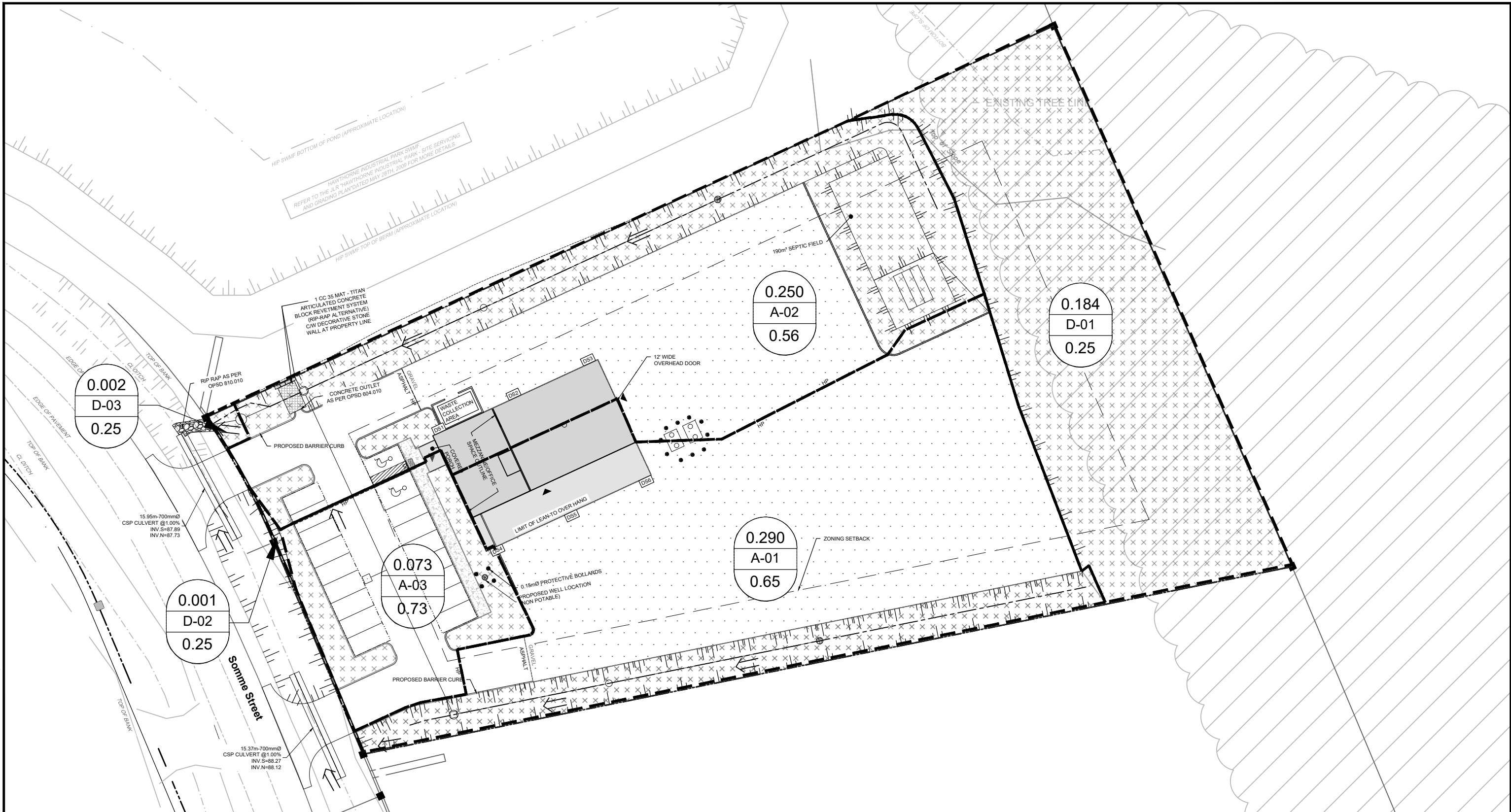
**NOVATECH**  
 Engineers, Planners & Landscape Architects  
 Suite 200, 240 Michael Copland Drive  
 Ottawa, Ontario, Canada K2M 1P6  
 Telephone: (613) 254-9643  
 Facsimile: (613) 254-5867  
 Website: www.novatech-eng.com

LOCATION CITY OF OTTAWA 541 SOMME STREET	PROJECT No. 124111
DRAWING NAME GRADING PLAN	REV # REV # 4
	DRAWING No. 124111-GR

M:\2024\124111\124111-GR.dwg, GR, Mar 17, 2026 - 5:58pm, rjg

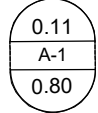
FILE # D07-12-25-0077 PLAN # 19398

M:\2024\124111\CAD\Civil\124111-SWM-POST.dwg, Post SWM, Mar 14, 2026 - 12:14am, rgood



**LEGEND**

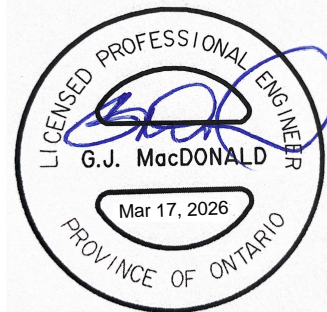
- PROPOSED PROPERTY LINE
- PROPOSED STORM DRAINAGE AREA



DRAINAGE AREA (HECTARES)  
DRAINAGE AREA ID



DIRECTION OF EXISTING MAJOR  
OVERLAND FLOW ROUTE



**NOVATECH**

Engineers, Planners & Landscape Architects  
Suite 200, 240 Michael Cowpland Drive  
Ottawa, Ontario, Canada K2M 1P6

Telephone  
Facsimile  
Website

(613) 254-9643  
(613) 254-5867  
www.novatech-eng.com

**CITY OF OTTAWA**  
**541 SOMME STREET**

**SWM PLAN**  
**POST- DEVELOPMENT)**



DATE	JOB	FIGURE
MAR 2026	124111	SWM-2

FILE # D07-12-25-0077 PLAN # 19398