

GENERAL NOTES:

- COORDINATE AND SCHEDULE ALL WORK WITH OTHER TRADES AND CONTRACTORS.
- DETERMINE THE EXACT LOCATION, SIZE, MATERIAL AND ELEVATION OF ALL EXISTING UTILITIES PRIOR TO COMMENCING CONSTRUCTION. PROTECT AND ASSUME RESPONSIBILITY FOR ALL EXISTING UTILITIES WHETHER OR NOT SHOWN ON THIS DRAWING.
- OBTAIN ALL NECESSARY PERMITS AND APPROVALS FROM THE CITY OF OTTAWA BEFORE COMMENCING CONSTRUCTION.
- BEFORE COMMENCING CONSTRUCTION OBTAIN AND PROVIDE PROOF OF COMPREHENSIVE, ALL RISK AND OPERATIONAL LIABILITY INSURANCE FOR \$5,000,000.00. INSURANCE POLICY TO NAME OWNERS, ENGINEERS AND ARCHITECTS AS CO-INSURED.
- RESTORE ALL DISTURBED AREAS ON-SITE AND OFF-SITE, INCLUDING TRENCHES AND SURFACES ON PUBLIC ROAD ALLOWANCES TO EXISTING CONDITIONS OR BETTER TO THE SATISFACTION OF THE CITY OF OTTAWA AND ENGINEER.
- REMOVE FROM SITE ALL EXCESS EXCAVATED MATERIAL, ORGANIC MATERIAL AND DEBRIS UNLESS OTHERWISE INSTRUCTED BY ENGINEER. EXCAVATE AND REMOVE FROM SITE ANY CONTAMINATED MATERIAL. ALL CONTAMINATED MATERIAL SHALL BE DISPOSED OF AT A LICENSED LANDFILL FACILITY.
- ALL ELEVATIONS ARE GEODETIC AND ARE REFERRED TO THE CGVD28 GEODETIC DATUM. BEARINGS ARE REFERENCED TO THE CENTRAL MERIDIAN OF MTH ZONE 9, NAD83 (CSRS)(2010). REFER TO "PLAN OF SURVEY OF BLOCK 2, REGISTERED PLAN 4M-1388, CITY OF OTTAWA, BY ANNIS O'SULLIVAN VOLLBEKK LTD.

SEWER NOTES:

- REFER TO GEOTECHNICAL REPORT (No. PG7327-1, DATED AUGUST 21, 2025), PREPARED BY PATERSON GROUP FOR SUBSURFACE CONDITIONS, CONSTRUCTION RECOMMENDATIONS, AND GEOTECHNICAL INSPECTION REQUIREMENTS. THE GEOTECHNICAL CONSULTANT IS TO REVIEW ON-SITE CONDITIONS AFTER EXCAVATION PRIOR TO PLACEMENT OF GRANULAR MATERIAL.
- REFER TO THE HYDROGEOLOGICAL ASSESSMENT AND TERRAIN ANALYSIS REPORT - PH4991-LET.02REV02, DATED JANUARY 8, 2026 - PREPARED BY PATERSON GROUP FOR COMPLETE HYDROGEOLOGICAL AND WATER TREATMENT DETAILS.
- THE WELL WATER IS NOT SUITABLE FOR CONSUMPTION.
- REFER TO ARCHITECTURAL PLANS "TITAN ENVIRONMENTAL CONSTRUCTION DRAWINGS 2025-09-16" FOR BUILDING AREAS AND DIMENSIONS.
- REFER TO THE SERVICING AND STORMWATER MANAGEMENT REPORT (R: F-2024-116, DATED MARCH 13, 2026 BY NOVATECH ENGINEERING CONSULTANTS LTD.
- SAW CUT AND KEY GRIND ASPHALT AT ALL ROAD CUTS AND ASPHALT TIE IN POINTS AS PER CITY OF OTTAWA STANDARDS (R10).
- PROVIDE LINE/PARKING PAINTING.
- CONTRACTOR TO PROVIDE THE CONSULTANT WITH A GENERAL PLAN OF SERVICES INDICATING ALL SERVICING AS-BUILT INFORMATION SHOWN ON THIS PLAN, AS-BUILT INFORMATION MUST INCLUDE: PIPE MATERIAL, SIZES, LENGTHS, SLOPES, INVERT AND T/G ELEVATIONS, STRUCTURE LOCATIONS, AND ANY ALIGNMENT CHANGES, ETC.

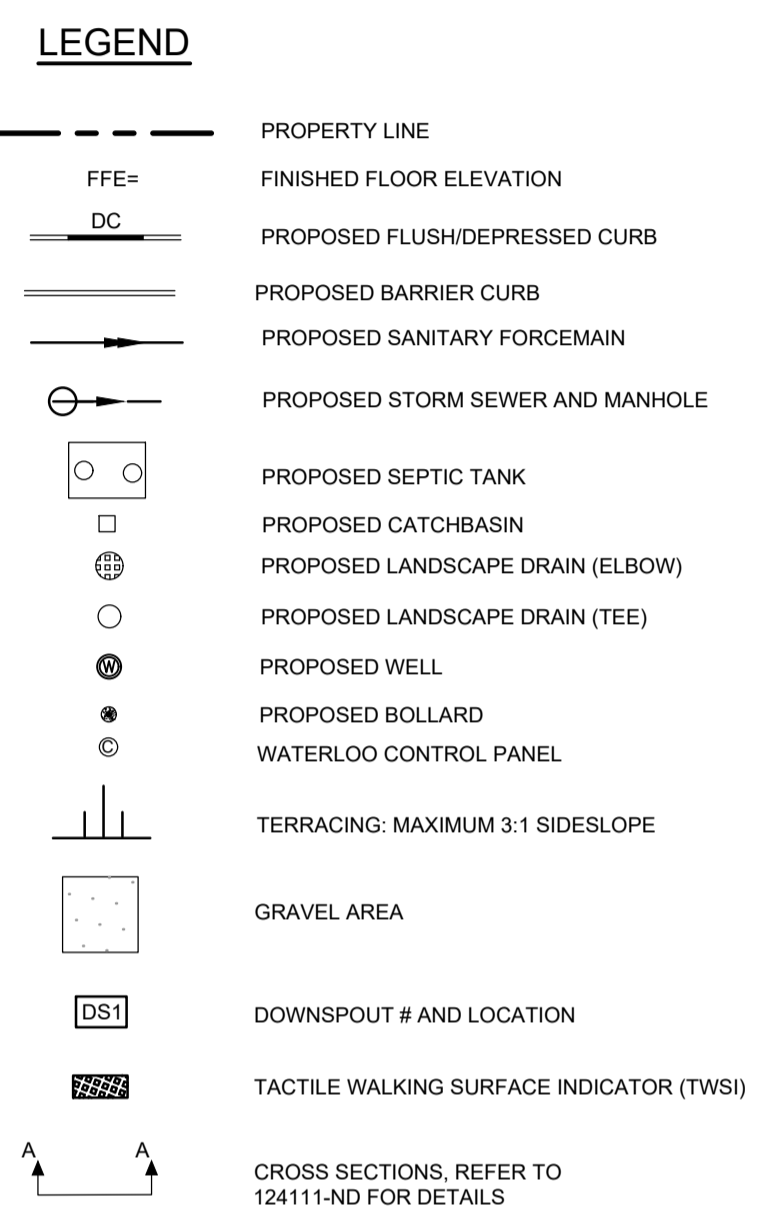
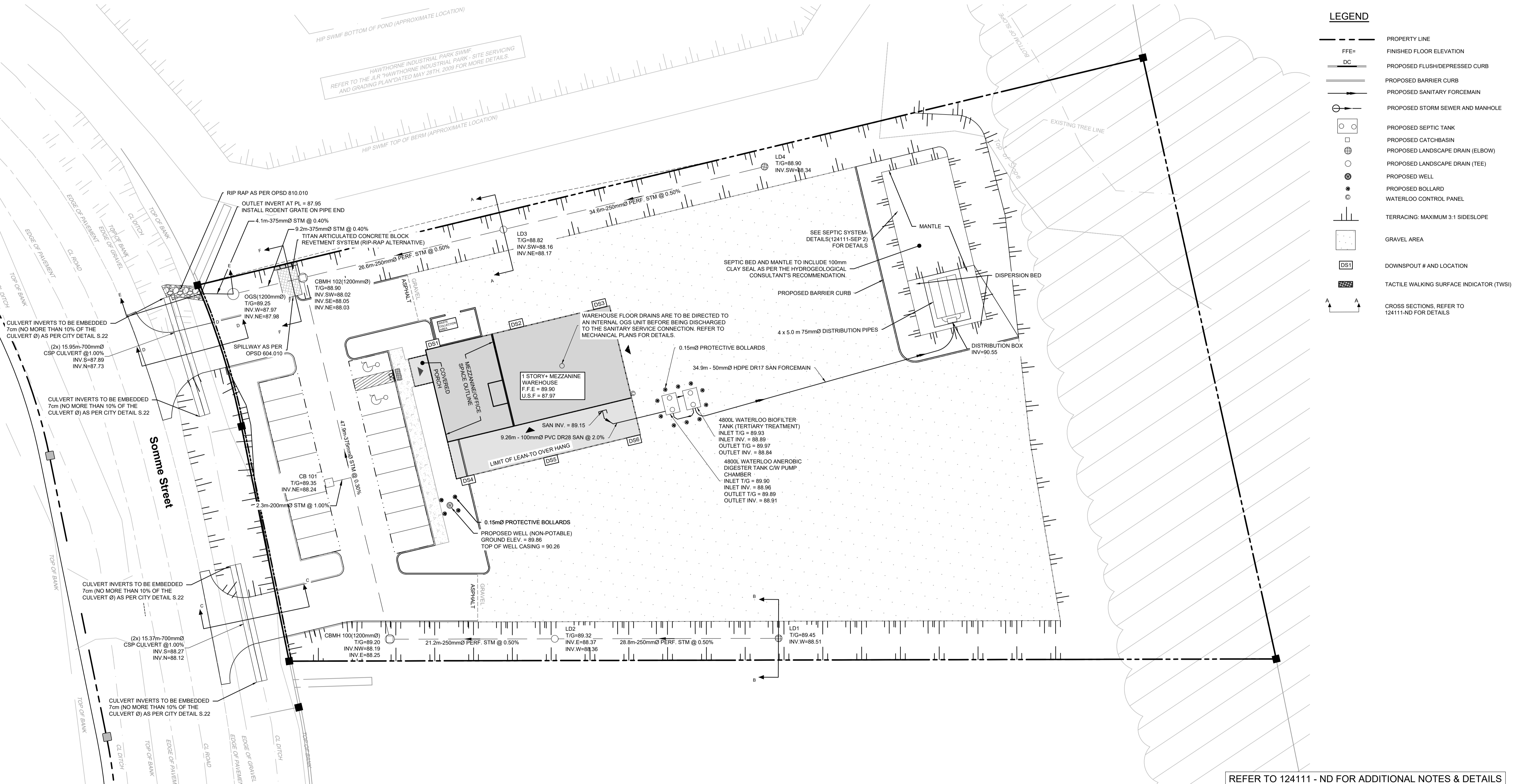
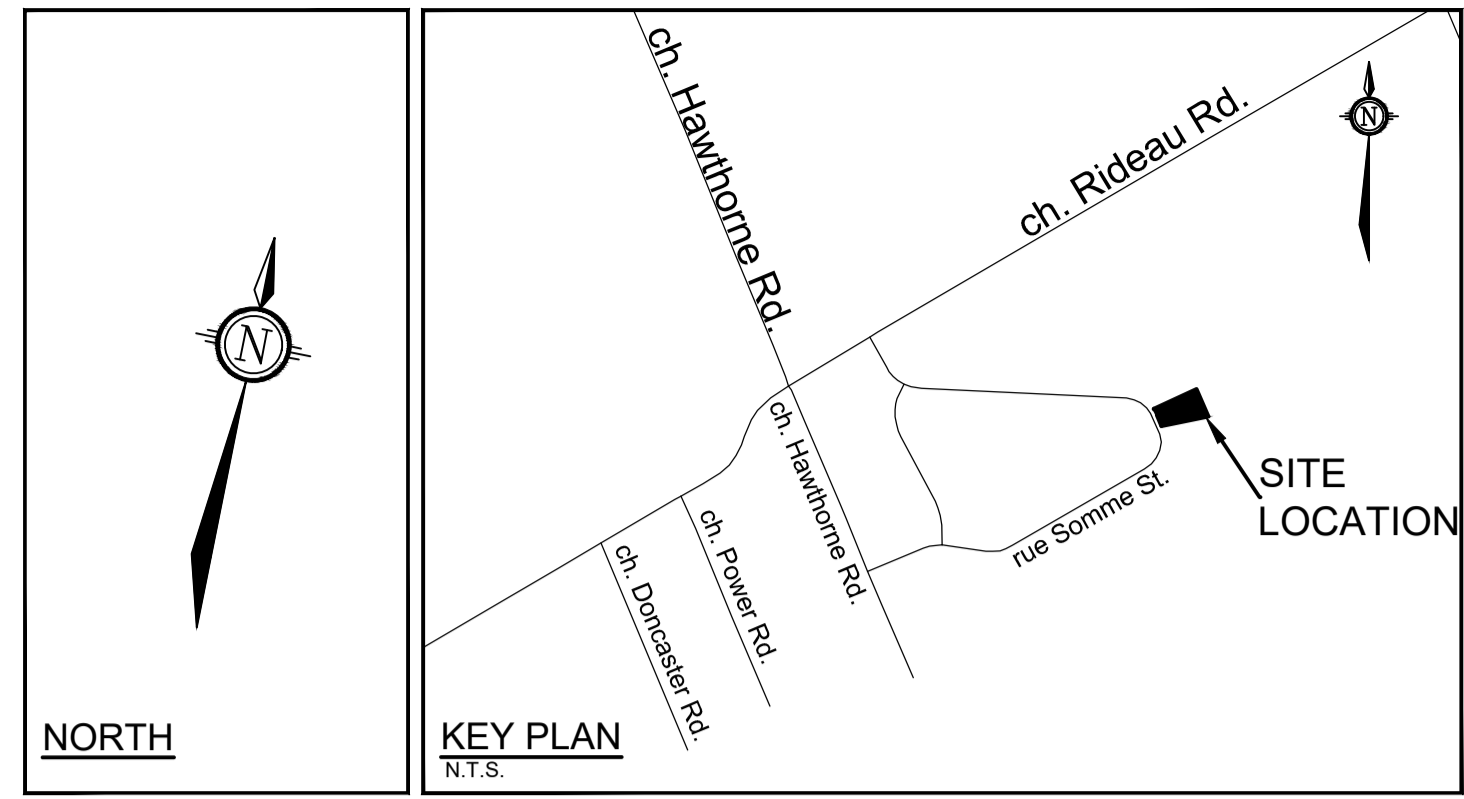
SEWER NOTES:

- SPECIFICATIONS:

ITEM	SPEC. No.	REFERENCE
CATCHBASIN (600x600mm)	705.010	OPSD
STORM MANHOLE (12000)	701.010	OPSD
CB, FRAME & COVER	400.020	OPSD
STORM MH FRAME & COVER	401.010	OPSD
SEWER TRENCH -		
STORM SEWER		
CATCHBASIN LEAD	PVC DR 35	
LANDSCAPE DRAINS	S30 & S31	
LANDSCAPE PERFORATED PIPE	S29	
SANITARY FORCEMAIN	HDPE DR 17	
SANITARY SERVICE	PVC DR 28	
- INSULATE ALL PIPES (SAN/STM) THAT HAVE LESS THAN 2.0 m COVER WITH INSULATION. PROVIDE 150mm CLEARANCE BETWEEN PIPE AND INSULATION.
- SERVICES ARE TO BE CONSTRUCTED TO 1.0m FROM FACE OF BUILDING AT A MINIMUM SLOPE OF 1.0%.
- A MINIMUM OF 150mm OF OPSS GRANULAR A SHOULD BE PLACED FOR BEDDING FOR PRIVATE SEWER OR WATER PIPES WHEN PLACED ON A SOIL SUBGRADE. THE BEDDING SHOULD BE EXTENDED FROM THE SPRING LINE TO A MINIMUM OF 300mm ABOVE THE OVERTOP OF THE PIPE, AND SHOULD CONSIST OF OPSS GRANULAR A.
- PIPE BEDDING, COVER AND BACKFILL ARE TO BE COMPACTED TO AT LEAST 98% OF THE

SEWER NOTES:

- STANDARD PROCTOR MAXIMUM DRY DENSITY. THE USE OF CLEAR CRUSHED STONE AS A BEDDING LAYER SHALL NOT BE PERMITTED.
- FLEXIBLE CONNECTIONS ARE REQUIRED FOR CONNECTING PIPES TO MANHOLES (FOR EXAMPLE KOR-N-SEAL, PSX, POSITIVE SEAL AND DURASEAL). THE CONCRETE CRADLE FOR THE PIPE CAN BE ELIMINATED.
- THE OWNER SHALL REQUIRE THAT THE SITE SERVICING CONTRACTOR PERFORM FIELD TESTS FOR QUALITY CONTROL OF ALL SANITARY SEWERS. LEAKAGE TESTING SHALL BE COMPLETED IN ACCORDANCE WITH OPSS 410.07.16, 410.07.18.04 AND 407.07.24. THE FIELD TESTS SHALL BE PERFORMED IN THE PRESENCE OF A CERTIFIED PROFESSIONAL ENGINEER WHO SHALL SUBMIT A CERTIFIED COPY OF THE TEST RESULTS.
- STORM MANHOLES AND CBMHs ARE TO HAVE 300mm SUMPS UNLESS OTHERWISE INDICATED.
- CONTRACTOR TO TELEVISION (CCTV) ALL PROPOSED SEWERS, 200mm OR GREATER PRIOR TO BASE COURSE ASPHALT (EXCLUDING 250mm PERFORATED PIPE). UPON COMPLETION OF CONTRACT, THE CONTRACTOR IS RESPONSIBLE TO FLUSH AND CLEAN ALL SEWERS & APPURTENANCES.

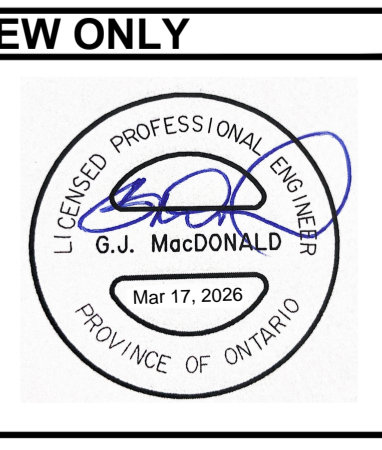


NOTE:
THE POSITION OF ALL POLE LINES, CONDUITS, WATERMANS, SEWERS AND OTHER UNDERGROUND AND OVERGROUND UTILITIES AND STRUCTURES IS NOT NECESSARILY SHOWN ON THE CONTRACT DRAWINGS, AND WHERE SHOWN, THE ACCURACY OF THE POSITION OF SUCH UTILITIES AND STRUCTURES IS NOT GUARANTEED. BEFORE STARTING WORK, DETERMINE THE EXACT LOCATION OF ALL SUCH UTILITIES AND STRUCTURES AND ASSUME ALL LIABILITY FOR DAMAGE TO THEM.

No.	REVISION	DATE	BY
4.	ISSUED FOR SITE PLAN APPROVAL	MAR 17/2026	GJM
3.	ISSUED TO ADDRESS CITY COMMENTS	FEB 06/2026	GJM
2.	ISSUED TO ADDRESS CITY COMMENTS	SEP 23/2025	GJM
1.	ISSUED FOR SITE PLAN APPLICATION	JUN 03/2025	GJM

SCALE	
1:250	

DESIGN	
DESIGN	RJG
CHECKED	ARM
DRAWN	RJG
CHECKED	ARM
APPROVED	GJM



NOVATECH
Engineers, Planners & Landscape Architects
Suite 200, 240 Michael Cowpland Drive
Ottawa, Ontario, Canada K2M 1P6
Telephone (613) 254-9643
Facsimile (613) 254-5867
Website www.novatech-eng.com

LOCATION
CITY OF OTTAWA
541 SOMME STREET

DRAWING NAME
GENERAL PLAN OF SERVICES

PROJECT No. 124111
REV # 4
DRAWING No. 124111-GP

REFER TO 124111 - ND FOR ADDITIONAL NOTES & DETAILS

M:\2024\124111\CAD\Civil\124111-GP.dwg, GP, Mar 13, 2026 - 3:04pm, rpsocd

FILE # D07-12-25-0077 PLAN # 19398