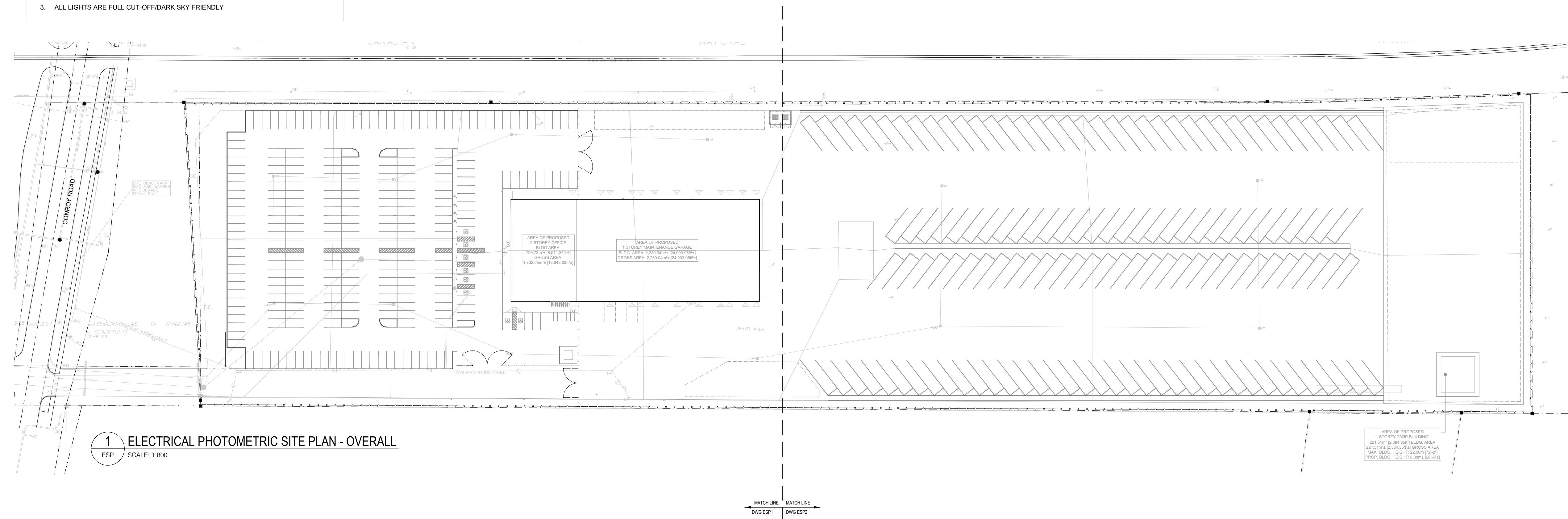


THESE DRAWINGS ARE NOT TO BE SCALED FOR SITE DIMENSIONS. THE CONTRACTOR MUST CHECK AND VERIFY ALL DIMENSIONS AND SITE CONDITIONS AT THE PROJECT SITE AND MUST REPORT ANY DISCREPANCIES TO THE CONSULTANTS BEFORE PROCEEDING WITH THE WORK.

COORDINATE ALL OF THE WORK WITH OTHER TRADES & THE LAYOUTS SHOWN ON THE OTHER CONSULTANTS AND THE ARCHITECTURAL DRAWINGS (WHERE APPLICABLE). REFER TO THE APPROPRIATE CONSULTANT DRAWINGS BEFORE PROCEEDING WITH THE WORK FOR ANY COORDINATION REQUIREMENTS.

THIS CONTRACTOR MUST CONFORM TO ALL APPLICABLE CODES AND STANDARD REQUIREMENTS OF THE AUTHORITIES HAVING JURISDICTION. THE CONTRACTOR SHALL WORK FROM DRAWINGS MARKED 'ISSUED FOR CONSTRUCTION' AND SHALL ENSURE LATEST ISSUED INSTRUCTIONS ARE FOLLOWED. THIS CONTRACTOR SHALL ASSUME FULL RESPONSIBILITY AND BEAR COSTS FOR ANY CORRECTIONS OR DAMAGES RESULTING FROM THEIR WORK.

- GENERAL NOTES : PHOTOMETRIC DRAWING**
- ALL CALCULATIONS POINTS ARE TAKEN AT GROUND LEVEL AND ARE IN FOOTCANDLES
 - TOTAL MOUNTING HEIGHT FOR ALL PARKING LOT/SITE LIGHTS IS 33' (10m)
 - ALL LIGHTS ARE FULL CUT-OFF/DARK SKY FRIENDLY

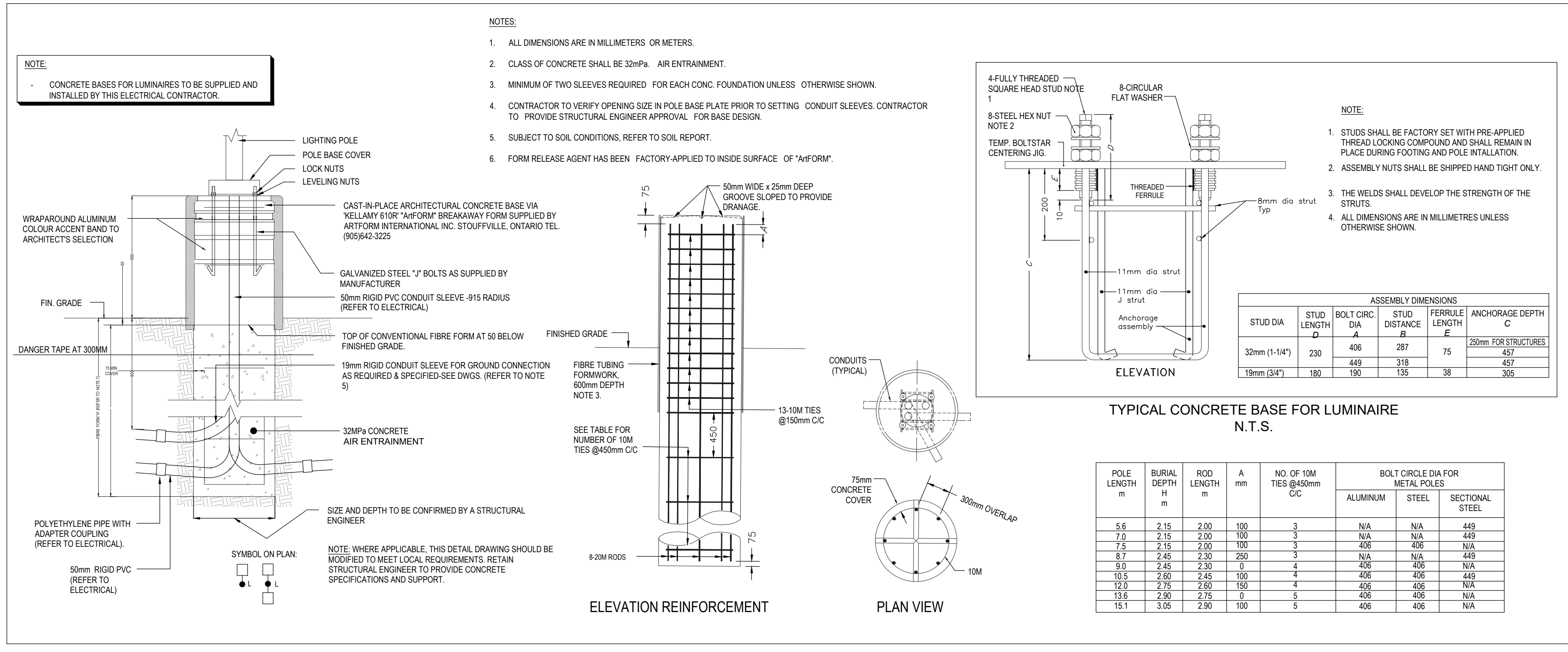


1 ELECTRICAL PHOTOMETRIC SITE PLAN - OVERALL
 ESP SCALE: 1:800

North

Revisions

No.	By	Description	Date
02	BK	ISSUED FOR COORDINATION	2025-10-29
01	BK	ISSUED FOR COORDINATION	2025-08-20



LIGHT FIXTURE SCHEDULE

TYPE	DESCRIPTION
A	LUMINAIRE/POLE ASSEMBLY CONSISTING OF A DOUBLE (2) LED LUMINAIRES WITH TYPE IV DISTRIBUTION PATTERN, 347V OUTDOOR USE DRIVER ON A 30" SQUARE STEEL POLE WITH POLE BASE COVER ON 3" CONCRETE BASE. COLOUR OF FINISH OF POLE/HEAD ARCHITECT OWNER SELECTION. LAMPS SHALL BE SUPPLIED WITH THE FIXTURE. FIXTURE TO HAVE FLAT LENS, BE FULL CUT OFF AND DARK-SKY FRIENDLY. SOLERA CORP. HAZE-1-160W-HLV-3500K-TY-IV-CC
A2	LUMINAIRE/POLE ASSEMBLY CONSISTING OF A DOUBLE (2) LED LUMINAIRES WITH A TYPE V SQUARE DISTRIBUTION PATTERN, 5' MAST ARM, 347V OUTDOOR USE DRIVER ON A 30" SQUARE STEEL POLE WITH POLE BASE COVER ON 3" CONCRETE BASE. COLOUR OF FINISH OF POLE/HEAD ARCHITECT OWNER SELECTION. LAMPS SHALL BE SUPPLIED WITH THE FIXTURE. FIXTURE TO HAVE FLAT LENS, BE FULL CUT OFF AND DARK-SKY FRIENDLY. SOLERA CORP. HAZE-2-300W-HLV-3500K-TY-VS-CC-SMA
A3	LUMINAIRE/POLE ASSEMBLY CONSISTING OF A TRIPLE (3) LED LUMINAIRES MOUNTED AT 90" WITH A TYPE V SQUARE DISTRIBUTION PATTERN, 5' MAST ARM, 347V OUTDOOR USE DRIVER ON A 30" SQUARE STEEL POLE WITH POLE BASE COVER ON 3" CONCRETE BASE. COLOUR OF FINISH OF POLE/HEAD ARCHITECT OWNER SELECTION. LAMPS SHALL BE SUPPLIED WITH THE FIXTURE. FIXTURE TO HAVE FLAT LENS, BE FULL CUT OFF AND DARK SKY FRIENDLY. SOLERA CORP. HAZE-2-300W-HLV-3500K-TY-VS-CC-SMA
B	LUMINAIRE/POLE ASSEMBLY CONSISTING OF A SINGLE (1) LED LUMINAIRE WITH A TYPE IV DISTRIBUTION PATTERN, 5' MAST ARM, 347V OUTDOOR USE DRIVER ON A 30" SQUARE STEEL POLE WITH POLE BASE COVER ON 3" CONCRETE BASE. COLOUR OF FINISH OF POLE/HEAD TO ARCHITECT OWNER SELECTION. LAMPS SHALL BE SUPPLIED WITH THE FIXTURE. FIXTURE TO HAVE FLAT LENS, BE FULL CUT OFF AND DARK-SKY FRIENDLY. FIXTURE TO BE C/W HOUSE SIDE SHIELD. SOLERA CORP. HAZE-1-200W-HLV-3500K-TY-IV-HCO-CC-SMA
C	LUMINAIRE/POLE ASSEMBLY CONSISTING OF A SINGLE (1) LED LUMINAIRE WITH A TYPE II DISTRIBUTION PATTERN, 5' MAST ARM, 347V OUTDOOR USE DRIVER ON A 30" SQUARE STEEL POLE WITH POLE BASE COVER ON 3" CONCRETE BASE. COLOUR OF FINISH OF POLE/HEAD TO ARCHITECT OWNER SELECTION. LAMPS SHALL BE SUPPLIED WITH THE FIXTURE. FIXTURE TO HAVE FLAT LENS, BE FULL CUT OFF AND DARK-SKY FRIENDLY. FIXTURE TO BE C/W HOUSE SIDE SHIELD. SOLERA CORP. HAZE-1-160W-HLV-3500K-TY-II-HCO-CC
W	WALL MOUNTED LUMINAIRE CONSISTING OF A SINGLE (1) LED LUMINAIRE WITH A TYPE IV DISTRIBUTION PATTERN, 347V OUTDOOR USE DRIVER AND WALL MOUNT ADAPTER. COLOUR OF FINISH OF HEAD TO ARCHITECT OWNER SELECTION. LAMPS SHALL BE SUPPLIED WITH THE FIXTURE. FIXTURE TO HAVE FLAT LENS BE FULL CUT OFF AND DARK-SKY FRIENDLY. FIXTURE TO BE MOUNTED AT 20' A.F.F. SOLERA CORP. HAZE-1-160W-HLV-3500K-TY-IV-CC-WM
W1	WALL MOUNTED LUMINAIRE CONSISTING OF A SINGLE (1) LED LUMINAIRE WITH A TYPE IV DISTRIBUTION PATTERN, 347V OUTDOOR USE DRIVER AND WALL MOUNT ADAPTER. COLOUR OF FINISH OF HEAD TO ARCHITECT OWNER SELECTION. LAMPS SHALL BE SUPPLIED WITH THE FIXTURE. FIXTURE TO HAVE FLAT LENS BE FULL CUT OFF AND DARK-SKY FRIENDLY. FIXTURE TO BE MOUNTED AT 20' A.F.F. SOLERA CORP. HAZE-1-80W-HLV-3500K-TY-IV-CC-WM

Project

**WO MW REALTY LIMITED
 OFFICE GROUP
 SITE PLAN APPLICATION
 NEW MILLER WASTE FACILITY**

3145 CONROY ROAD, OTTAWA, ON

Drawing

**ELECTRICAL
 PHOTOMETRIC SITE PLAN
 OVERALL**

Scale AS NOTED Stamp

Drawn BD

Checked BK

Plan # 15862
 File # D07-12-25-0107

Project No. 25-000-087
 Drawing No.

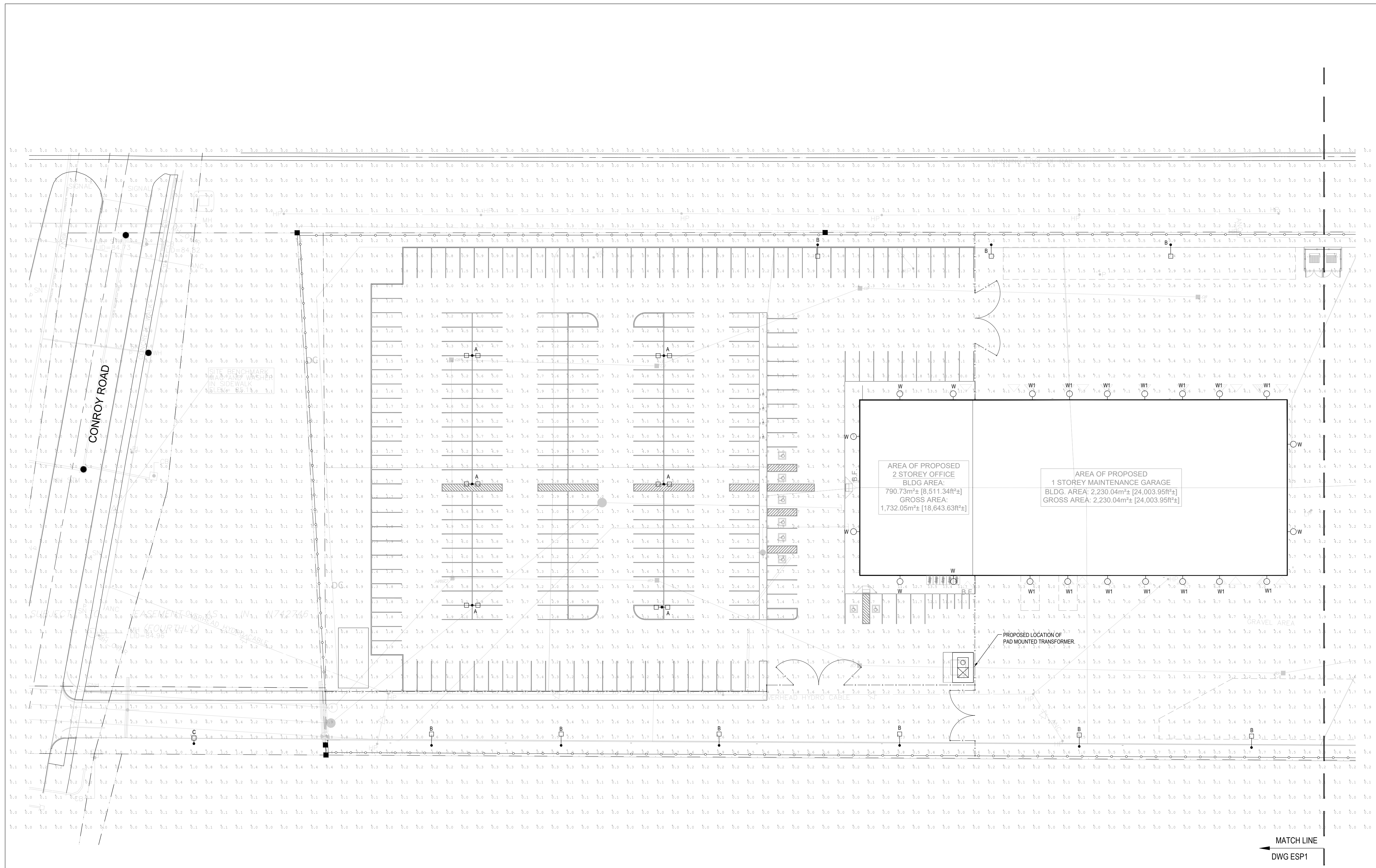
Date MAY 2025

ESP

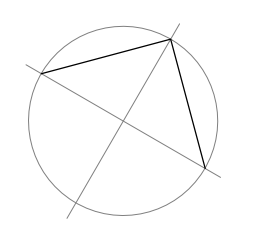
THESE DRAWINGS ARE NOT TO BE SCALED FOR SITE DIMENSIONS. THE CONTRACTOR MUST CHECK AND VERIFY ALL DIMENSIONS AND SITE CONDITIONS AT THE PROJECT SITE AND MUST REPORT ANY DISCREPANCIES TO THE CONSULTANTS BEFORE PROCEEDING WITH THE WORK FOR ANY COORDINATION REQUIREMENTS.

COORDINATE ALL OF THE WORK WITH OTHER TRADES & THE LAYOUTS SHOWN ON THE OTHER CONSULTANTS AND THE ARCHITECTURAL DRAWINGS (WHERE APPLICABLE). REFER TO THE APPROPRIATE CONSULTANT DRAWINGS BEFORE PROCEEDING WITH THE WORK FOR ANY COORDINATION REQUIREMENTS.

THIS CONTRACTOR MUST CONFORM TO ALL APPLICABLE CODES AND STANDARD REQUIREMENTS OF THE AUTHORITIES HAVING JURISDICTION. THE CONTRACTOR SHALL WORK FROM DRAWINGS MARKED 'ISSUED FOR CONSTRUCTION' AND SHALL ENSURE LATEST ISSUED INSTRUCTIONS ARE FOLLOWED. THIS CONTRACTOR SHALL ASSUME FULL RESPONSIBILITY AND BEAR COSTS FOR ANY CORRECTIONS OR DAMAGES RESULTING FROM THEIR WORK.



North



Revisions

No.	By	Description	Date
02	BK	ISSUED FOR COORDINATION	2025-10-29
01	BK	ISSUED FOR COORDINATION	2025-08-20

Project
WO MW REALTY LIMITED
OFFICE GROUP
SITE PLAN APPLICATION
NEW MILLER WASTE FACILITY

3145 CONROY ROAD, OTTAWA, ON

Drawing
ELECTRICAL
PHOTOMETRIC SITE PLAN -
PART 1

Scale AS NOTED
 Stamp
 Drawn BD
 Checked BK
 Plan # 15862
 File # D07-12-25-0107
 Project No. 25-000-087
 Drawing No.
 Date MAY 2025

ESP1

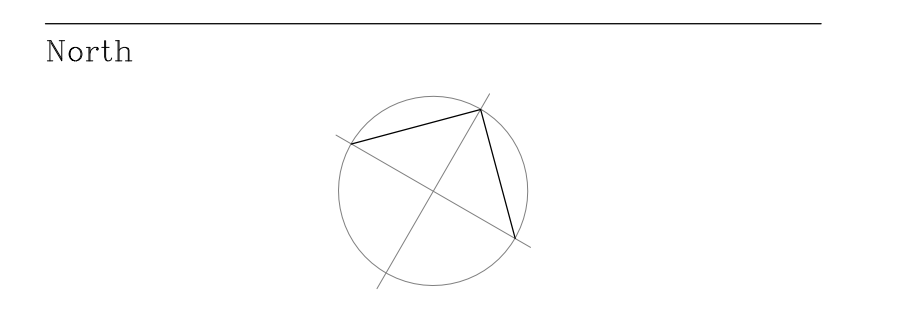
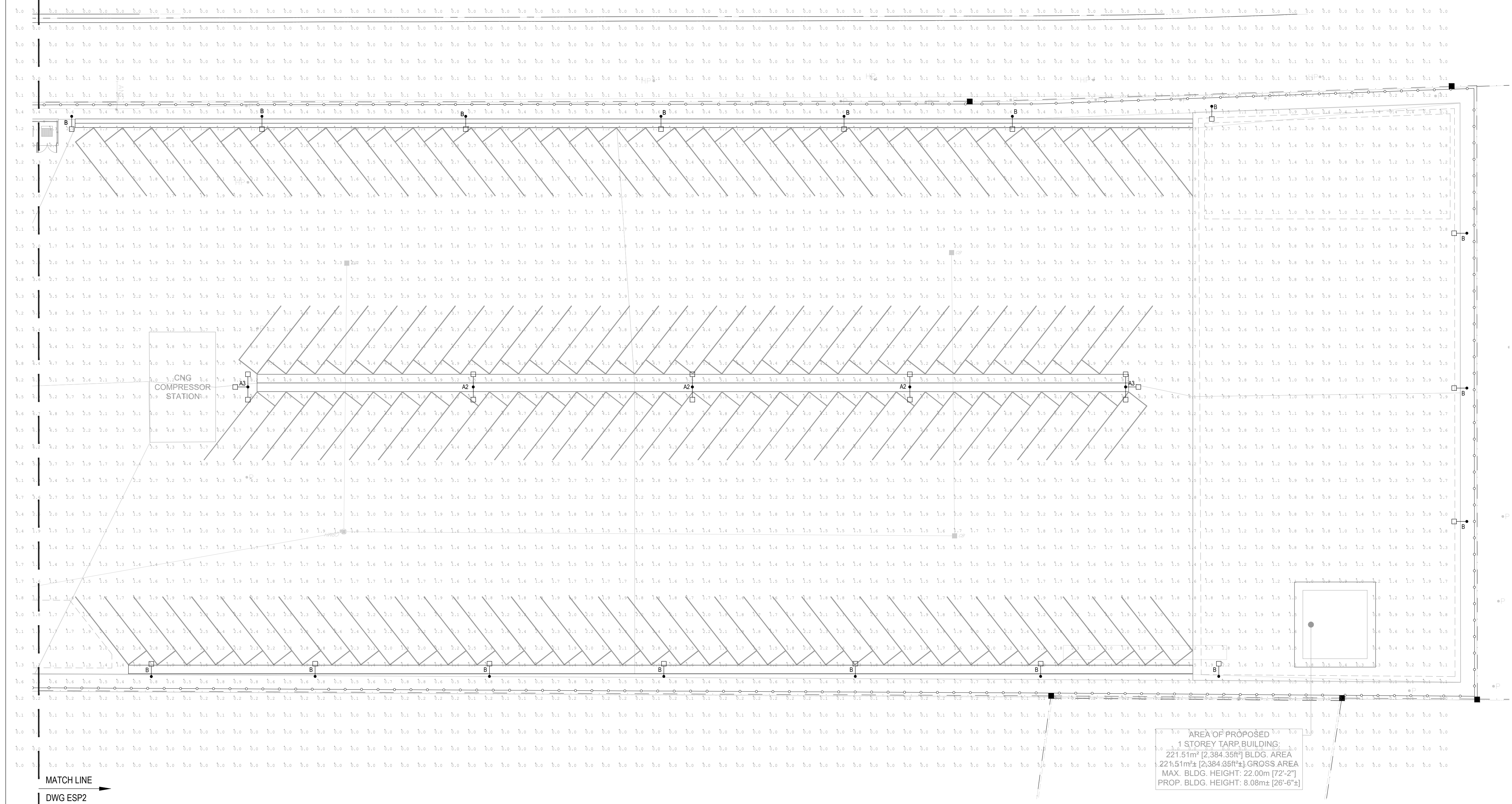
1 ELECTRICAL PHOTOMETRIC SITE PLAN - PART 1
 ESP1 SCALE: 1:400

MATCH LINE
 DWG ESP1

THESE DRAWINGS ARE NOT TO BE SCALED FOR SITE DIMENSIONS. THE CONTRACTOR MUST CHECK AND VERIFY ALL DIMENSIONS AND SITE CONDITIONS AT THE PROJECT SITE AND MUST REPORT ANY DISCREPANCIES TO THE CONSULTANTS BEFORE PROCEEDING WITH THE WORK.

COORDINATE ALL OF THE WORK WITH OTHER TRADES & THE LAYOUTS SHOWN ON THE OTHER CONSULTANTS AND THE ARCHITECTURAL DRAWINGS (WHERE APPLICABLE). REFER TO THE APPROPRIATE CONSULTANT DRAWINGS BEFORE PROCEEDING WITH THE WORK FOR ANY COORDINATION REQUIREMENTS.

THIS CONTRACTOR MUST CONFORM TO ALL APPLICABLE CODES AND STANDARD REQUIREMENTS OF THE AUTHORITIES HAVING JURISDICTION. THE CONTRACTOR SHALL WORK FROM DRAWINGS MARKED 'ISSUED FOR CONSTRUCTION' AND SHALL ENSURE LATEST ISSUED INSTRUCTIONS ARE FOLLOWED. THIS CONTRACTOR SHALL ASSUME FULL RESPONSIBILITY AND BEAR COSTS FOR ANY CORRECTIONS OR DAMAGES RESULTING FROM THEIR WORK.



Revisions

No.	By	Description	Date
02	BK	ISSUED FOR COORDINATION	2025-10-29
01	BK	ISSUED FOR COORDINATION	2025-08-20

Project
**WO MW REALTY LIMITED
 OFFICE GROUP
 SITE PLAN APPLICATION
 NEW MILLER WASTE FACILITY**
 3145 CONROY ROAD, OTTAWA, ON

Drawing
**ELECTRICAL
 PHOTOMETRIC SITE PLAN -
 PART 2**

Scale AS NOTED
 Stamp
 Drawn BD
 Checked BK
 Plan # 15862
 File # D07-12-25-0107
 Project No. 25-000-087
 Drawing No.
 Date MAY 2025

ESP2

MATCH LINE
 DWG ESP2
1 ELECTRICAL PHOTOMETRIC SITE PLAN - PART 2
 ESP2 SCALE: 1:400