

Copyright Reserved

The Contractor shall verify and be responsible for all dimensions. DO NOT scale the drawing - any errors or omissions shall be reported to Stantec without delay.
The Copyrights to all designs and drawings are the property of Stantec. Reproduction or use for any purpose other than that authorized by Stantec is forbidden.

Legend

- R100A**
0.31 | 50
SANITARY DRAINAGE AREA ID#
POPULATION COUNT
SANITARY DRAINAGE AREA ha.
- G100A**
0.11 | INFL
SANITARY DRAINAGE AREA ID#
INFILTRATION RATE OF 0.33 L/s/ha APPLIED
SANITARY DRAINAGE AREA ha.
- SANITARY DRAINAGE AREA**
SANITARY DRAINAGE AREA
- PROPOSED SANITARY MH AND SEWER**
PROPOSED SANITARY MH AND SEWER
- EXISTING SANITARY MH AND SEWER**
EXISTING SANITARY MH AND SEWER
- THERMAL INSULATION ON SANITARY SEWER WHERE COVER IS LESS THAN 2.5m AS PER S35.**
THERMAL INSULATION ON SANITARY SEWER WHERE COVER IS LESS THAN 2.5m AS PER S35.

Notes

2	WATER ENTRY BUILDING C	KV	KS	26.03.19
1	REVISED SITE PLAN	KV	KS	26.03.17
0	ISSUED FOR SPA	MJS	KS	25.11.07
Revision		By	Appd.	YY.MM.DD
File Name: 160402120.dwg		MJS	DT	MJS
		Dwn.	Chkd.	Dgn.
				YY.MM.DD

Permit-Seal

Client/Project

MATTAMY HOMES LTD.
50 HINES ROAD, SUITE 100
OTTAWA, ON, K2K 2M5

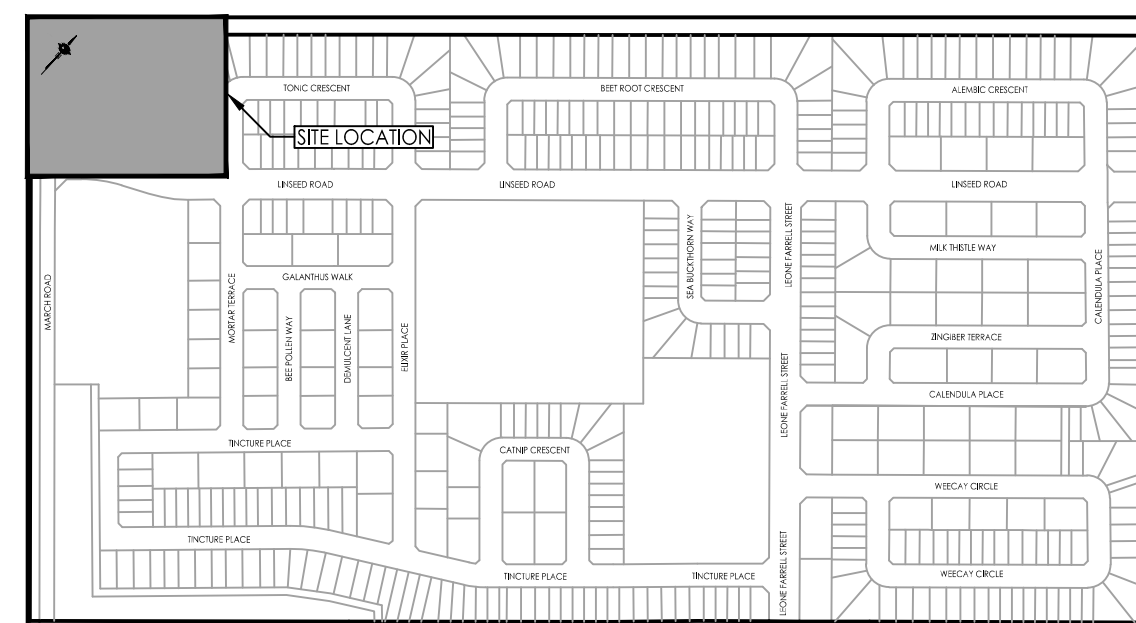
NORTHWOODS SUBDIVISION
PHASE 6, BLOCK 45A
OTTAWA, ON, CANADA

Title

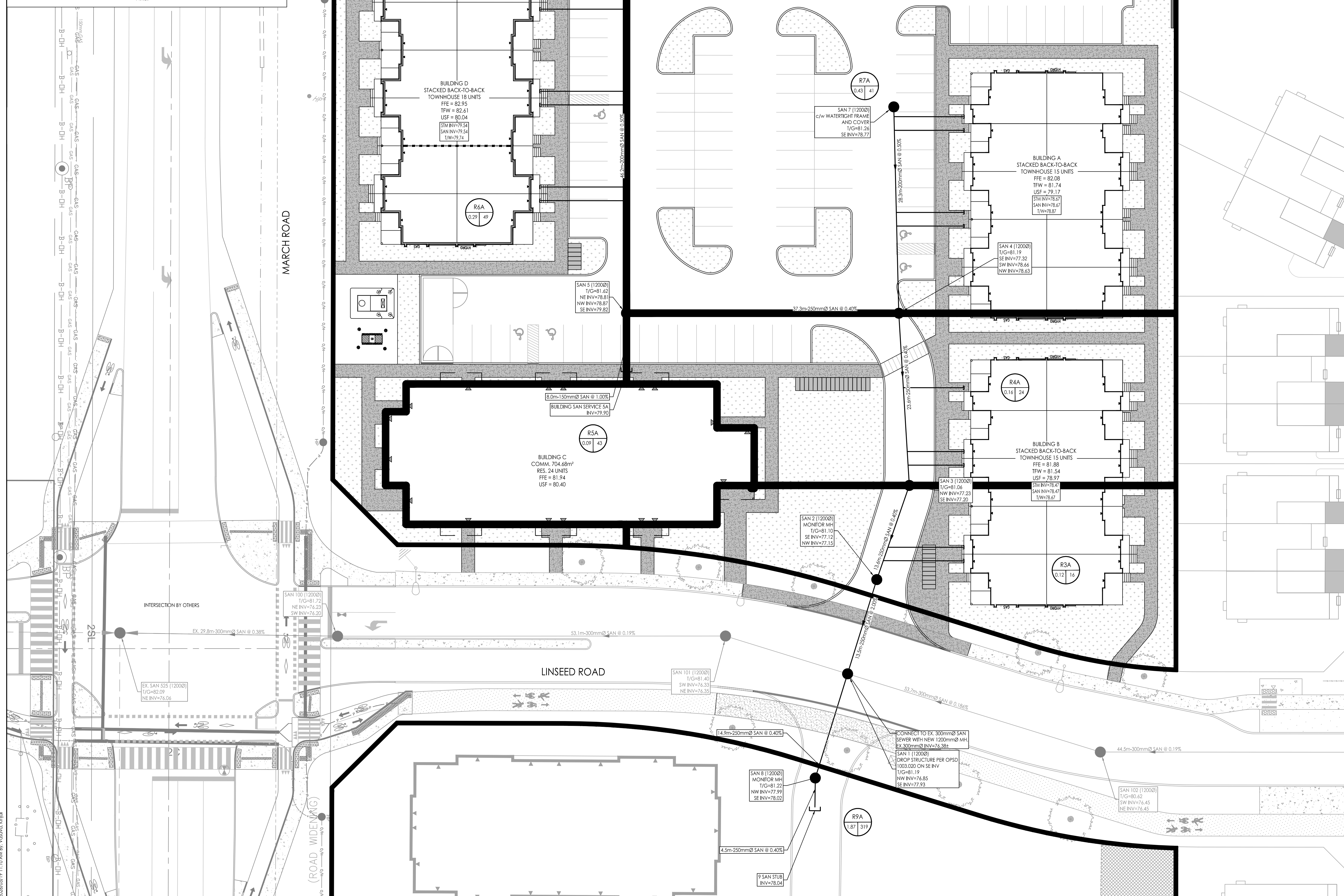
SANITARY DRAINAGE PLAN

Project No.	Scale	0	2.5	7.5	12.5m
160402120	1:250				
Drawing No.	Sheet	Revision			

SA-1 7 of 7 2
PLAN # 19393



KEY PLAN
N.T.S.



X:\Projects\160402120\Design\Drawings\160402120.dwg
25/03/2019 11:03:43 AM - 0.000000