

IMAGE CONCEPTUELLE. LES SPÉCIFICATIONS DES PLANS ET DEVIS PEUVENT VARIER

CLIENT: **VUZE CONSTRUCTION**

Laperriere Av 1600,
Ottawa, ON, K1Z 8P5
T. 819.664.4195

PROJECT: **1015 Tweddle Road**

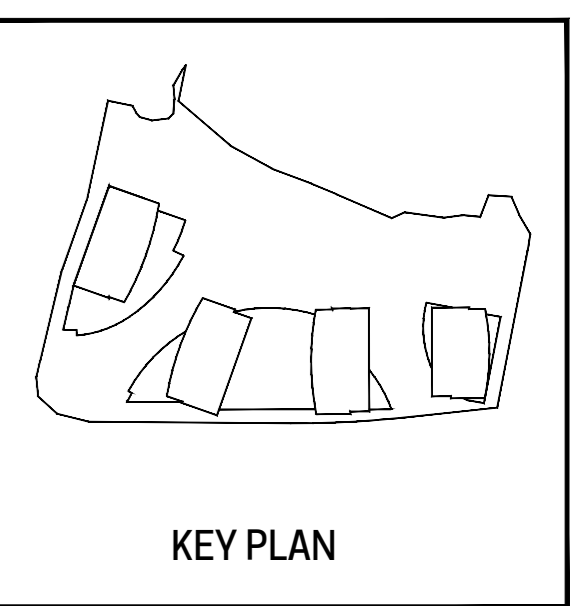
LANDSCAPE ARCHITECTURE

Landscape architecture | For SPA application Rev03 | 2026-02-18

PLANCHE	TITRE	SCALE
AP-10	LANDSCAPE PLAN	1:250
AP-11	PROJECTED CANOPY PLAN	1:250
AP-12	KEY PLAN	1:250
AP-20	DESCRIPTION PLAN	1:100
AP-21	DESCRIPTION PLAN	1:100
AP-22	DESCRIPTION PLAN	1:100
AP-23	DESCRIPTION PLAN	1:100
AP-24	DESCRIPTION PLAN	1:100
AP-30	PLANTING PLAN	1:100
AP-31	PLANTING PLAN	1:100
AP-32	PLANTING PLAN	1:100
AP-33	PLANTING PLAN	1:100
AP-34	PLANTING PLAN	1:100
AP-40	CONSTRUCTION DETAILS	SCALE INDICATED
AP-41	CONSTRUCTION DETAILS	SCALE INDICATED
AP-42	CONSTRUCTION DETAILS	SCALE INDICATED
AP-43	CONSTRUCTION DETAILS	SCALE INDICATED
AP-44	PLANTING DETAILS	SCALE INDICATED
AP-60	SECTIONS/ELEVATIONS	1:100
AP-51	RENDERINGS	NO SCALE

En collaboration avec:

Architects	Civil	Surveyor	Planner
<p>NEUF architect(e)s</p> <p>630, boul. René-Lévesque W. 32th floor, Montreal, QC, H3B 1S6 T. 514.847.1117</p>	<p>EXP</p> <p>1001, boul. De Maisonneuve W. suite 800, Montreal, QC, H3A 3C8 T. 514.931.1080</p>	<p>Annis, O'Sullivan, Vollebakk Ltd.</p> <p>14 Concourse Gate, Ottawa, ON, K1Z 8P5 T. 613.727.0850</p>	<p>Fotenn Planning and Design</p> <p>420 O'Connor Street, Ottawa, ON, K2P 0P4 T. 613.730.5709</p>



Revisions

No.	Description	Appr.	Date
1	For SPA application	S.G.	05/03/2025
2	For SPA application R01	S.G.	09/25/2025
3	For SPA application R02	S.G.	11/20/2025
4	For SPA application R03	S.G.	02/18/26

DO NOT USE FOR CONSTRUCTION

- LEGEND**
- Limit of work (Site grading limit)
 - Property line
 - Existing floodline
 - Projected floodline
 - Wetland edge
 - Contour lines
 - Top of slope line
 - Bottom of slope line
 - Proposed deciduous tree and shrub
 - Proposed coniferous tree and shrub
- SEEDING**
- Mix 1: Floodline zone
Andropogon gerardii, Calamagrostis canadensis, Carex lurida, Carex vulpocarpa, Elymus canadensis, Glehnia canadensis, Juncus effusus, Sorghum alatum, Verbena hastata, Nicotiana glauca, Rudbeckia hirta
 - Mix 2: Rewilding zone
Andropogon gerardii, Carex lurida, Carex vulpocarpa, Elymus canadensis, Achillea millefolium, Agastache foeniculum, Symphytum cordatum, Scirpus spicatus
 - Mix 3: Pollinator wildflower mix
Achillea millefolium, Anemone hepatica, Asarum canadense, Chamaenerion angustifolium, Helianthus scaberrimus, Monarda fistulosa, Sanguinaria canadensis, Solidago nemoralis, Symphytum cordatum
 - Grass (turf)
 - Perennials
 - Wooden deck surface
 - Parasol
 - Outdoor dining tables
 - Bike Rack
 - Water Fountain Sculptures
 - Wooden seat mounted on concrete wall
 - Pebble shaped seat
 - Pebble shaped planter
 - Boulder

- Notes:**
- LOT 30 CONCESSION 1 (OLD SURVEY) GEOGRAPHIC TOWNSHIP OF CUMBERLAND CITY OF OTTAWA, PREPARED BY ANNIS, O'SULLIVAN, VOLLEBECK LTD., DATED OCTOBER 15TH, 2024.
 - PROPERTY BOUNDARY INFORMATION AND PIN AS WELL AS WETLAND EDGE, PSM 30m BUFFER, PATTERSON OF TOP OF SLOPE, 15m SETBACK AND HAZARD LANDS LIMITS DERIVED FROM PLAN OF SURVEY DATED 15TH 2024 11TH AMENDED APRIL 30TH, 2025, BY ANNIS, O'SULLIVAN, VOLLEBECK LTD. PLAN 25483-24 M. CHENIER PI L50 C1 OS CUMBERLAND O.D.S.
 - The Contractor must verify all site existing conditions before beginning the work and inform the Project Director of any errors, omissions or contradictions.
 - Existing grades indicated on the plan come from the survey provided by the owner.
 - The Contractor must not cut down any existing vegetation without the approval of the Project Director.
 - Implementation of the works on site must be approved by the Project Director.
 - The Contractor must use the CAD file for implementation of all work.
 - The contractor must verify the amounts specified in the schedule and notify the landscape architect of any errors, omissions or contradictions before the close of the bid.

Professional seal

Project name
1015 TWEDDLE ROAD

002-02-25-0038 & 007-12-25-0073 // Plan Number # 13417

Drawing title
KEY PLAN

Scale
1:250

Designed by
S. Gallant, G. Dostaler

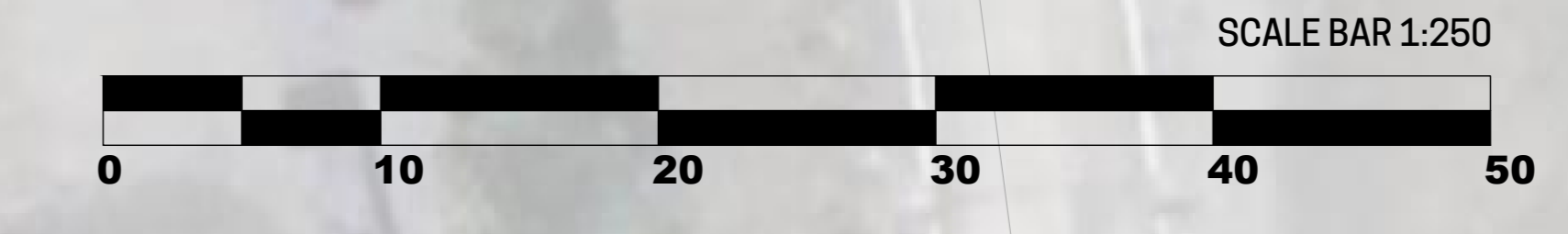
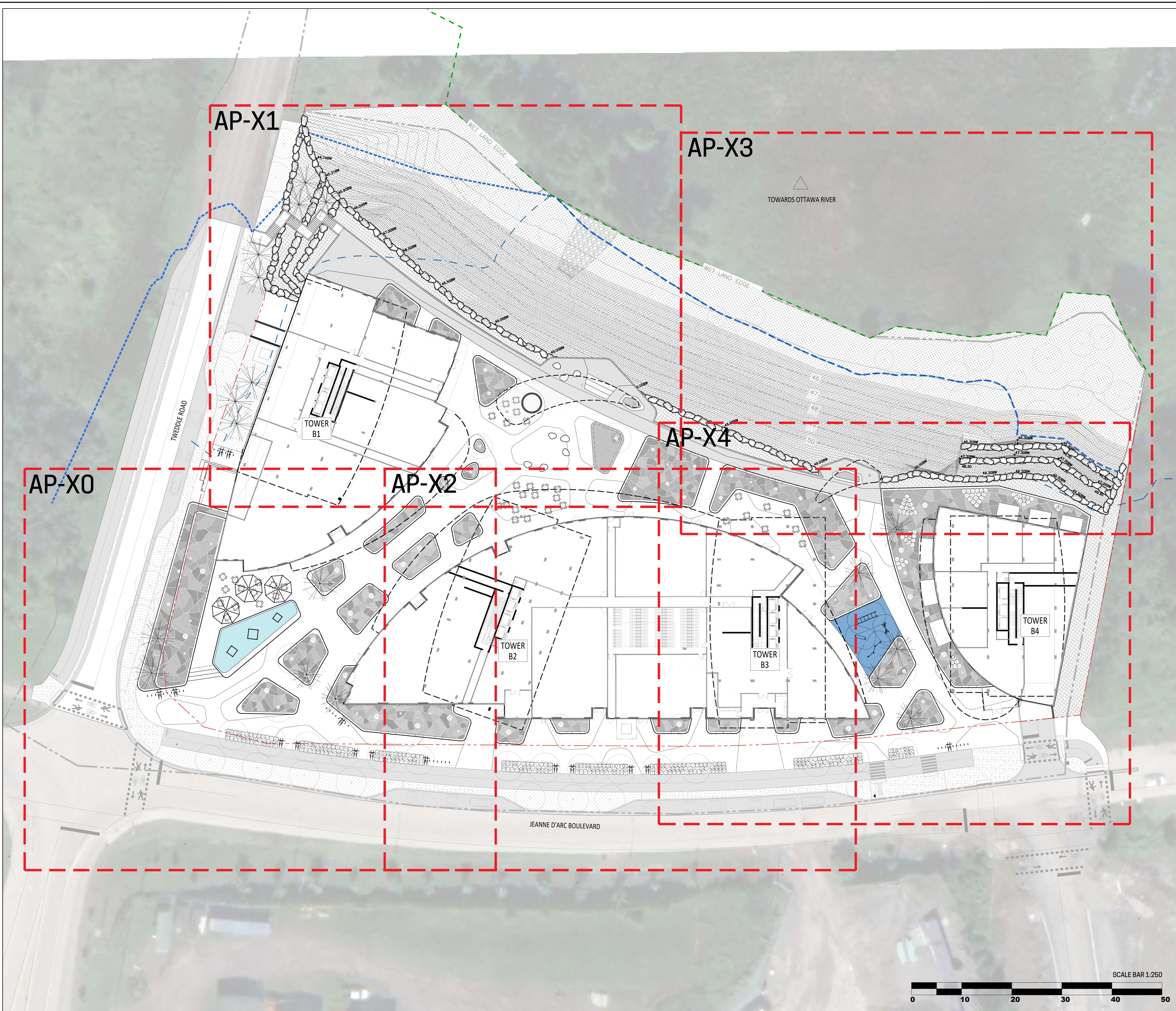
Drawn by
V. Suarez, I. Sobral

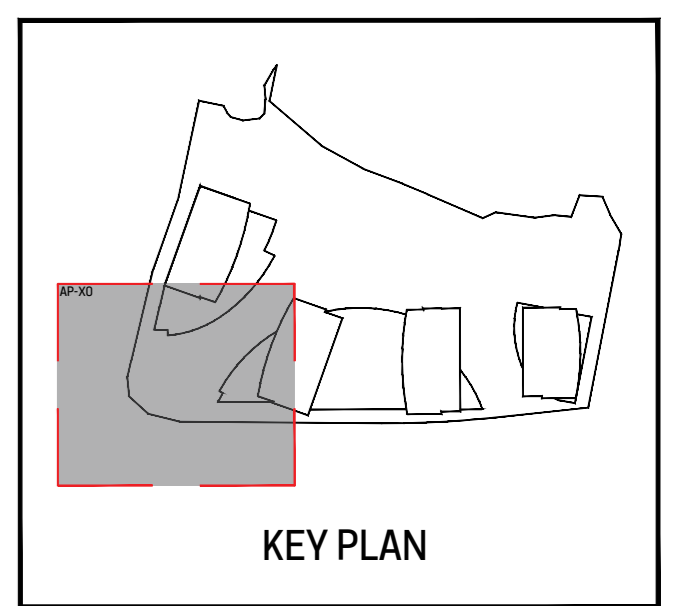
Approved by
S. Gallant

March 2025

AP-12

21-695





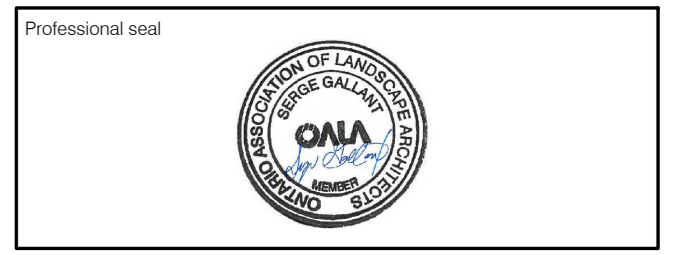
Revisions			
No.	Description	Appr.	Date
1	For SPA application	S.G.	05/03/2025
2	For SPA application RD1	S.G.	09/25/2025
3	For SPA application RD2	S.G.	11/20/2025
4	For SPA application RD3	S.G.	02/18/2026

DO NOT USE FOR CONSTRUCTION

Notes:

- LOT 30 CONVESSION 1 (OLD SURVEY) GEOGRAPHIC TOWNSHIP OF CUMBERLAND CITY OF OTTAWA, PREPARED BY ANNIS, OSULLIVAN, VOLLEBEK LTD., DATED OCTOBER 15TH, 2024.
- PROPERTY BOUNDARY INFORMATION AND PIN AS WELL AS WETLAND EDGE, PSM 30m BUFFER, PATTERSON OF TOP OF SLOPE, 15m SETBACK AND HAZARD LANDS LIMITS DERIVED FROM PLAN OF SURVEY DATED 15TH 2024 11TH, AMENDED APRIL 30TH, 2025, BY ANNIS, OSULLIVAN, VOLLEBEK LTD. PLAN 25483-24 M. CHENIER PI L50 C1 OS CUMBERLAND O.DS.

- The Contractor must verify all site existing conditions before beginning the work and inform the Project Director of any errors, omissions or contradictions.
- Existing grades indicated on the plan come from the survey provided by the owner.
- The Contractor must not cut down any existing vegetation without the approval of the Project Director.
- Implementation of the works on site must be approved by the Project Director.
- The Contractor must use the CAD file for implementation of all work.
- The contractor must verify the amounts specified in the schedule and notify the landscape architect of any errors, omissions or contradictions before the close of the bid.



Project name:
1015 TWEDDLE ROAD

002-02-25-0038 & 007-12-25-0073 // Plan Number # 19417

Drawing title:
DESCRIPTION PLAN

Scale:
1:100

Designed by:
S. Gallant, G. Dostaler

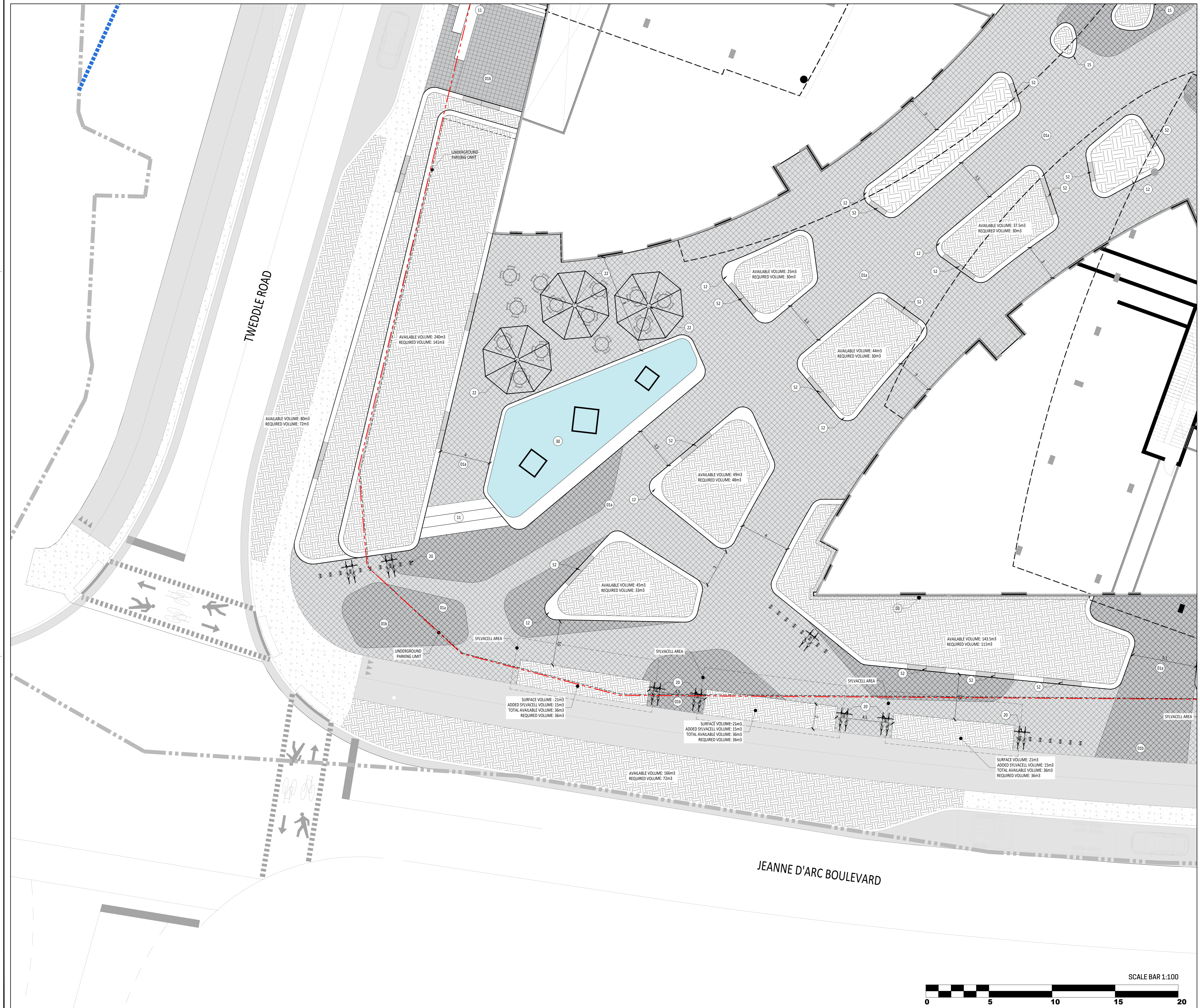
Drawn by:
V. Suarez, I. Sobral

Approved by:
S. Gallant

Date:
March 2025

Sheet No:
AP-20

21-695



LEGEND

- Limit of work (Site grading limit)
- Property line
- Existing floodline
- Projected floodline
- Wetland edge
- Contour lines
- Proposed elevation
- TW Top of wall
- HE Top of curb
- HT Top of slope
- D Top of drain
- BW Bottom of wall
- BE Bottom of curb
- BT Bottom of slope
- PH High point
- Top of slope line
- Bottom of slope line
- Light fixture, refer to lighting plan
- Vegetation feature (see planting plan) Tree and shrub planting pit, minimum depth 1m
- Vegetation feature (see planting plan) Planting pit for shrubs & perennials, minimum depth 450 mm
- Vegetation feature (see planting plan) Planting pit for seedling and sod, minimum depth 150 mm

List of details on plans

Key: Description

Surfaces

- 01a Pavé
- 02b Pavé on structural slab
- 02 Rubber synthetic surface
- 03 River rock strip edge (bande de propreté)

Stairs, walls & precast concrete elements

- 11 Concrete stairs
- 12 Precast concrete wall & planter
- 13 Precast concrete platform
- 14 Precast concrete pebble shaped seat
- 15 Precast concrete pebble shaped planter

Equipment & site furniture

- 20 Bike Rack
- 21 Waste and recycling containers
- 22 Parcel
- 23 Traffic equipment

Water features

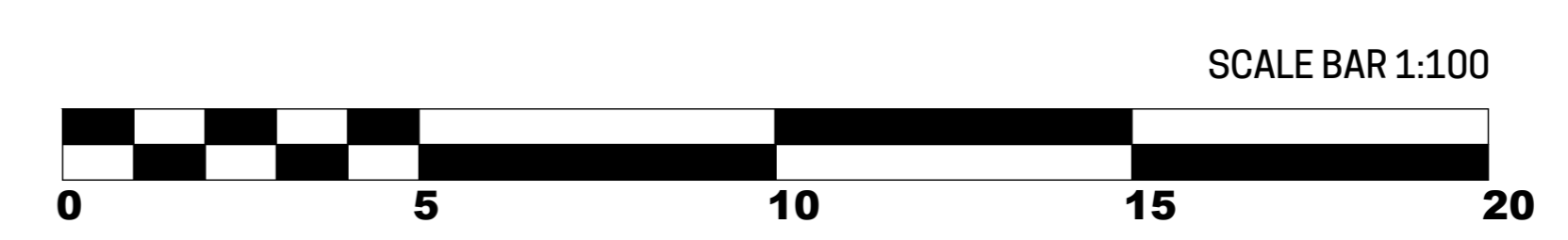
- 30 Water fountain

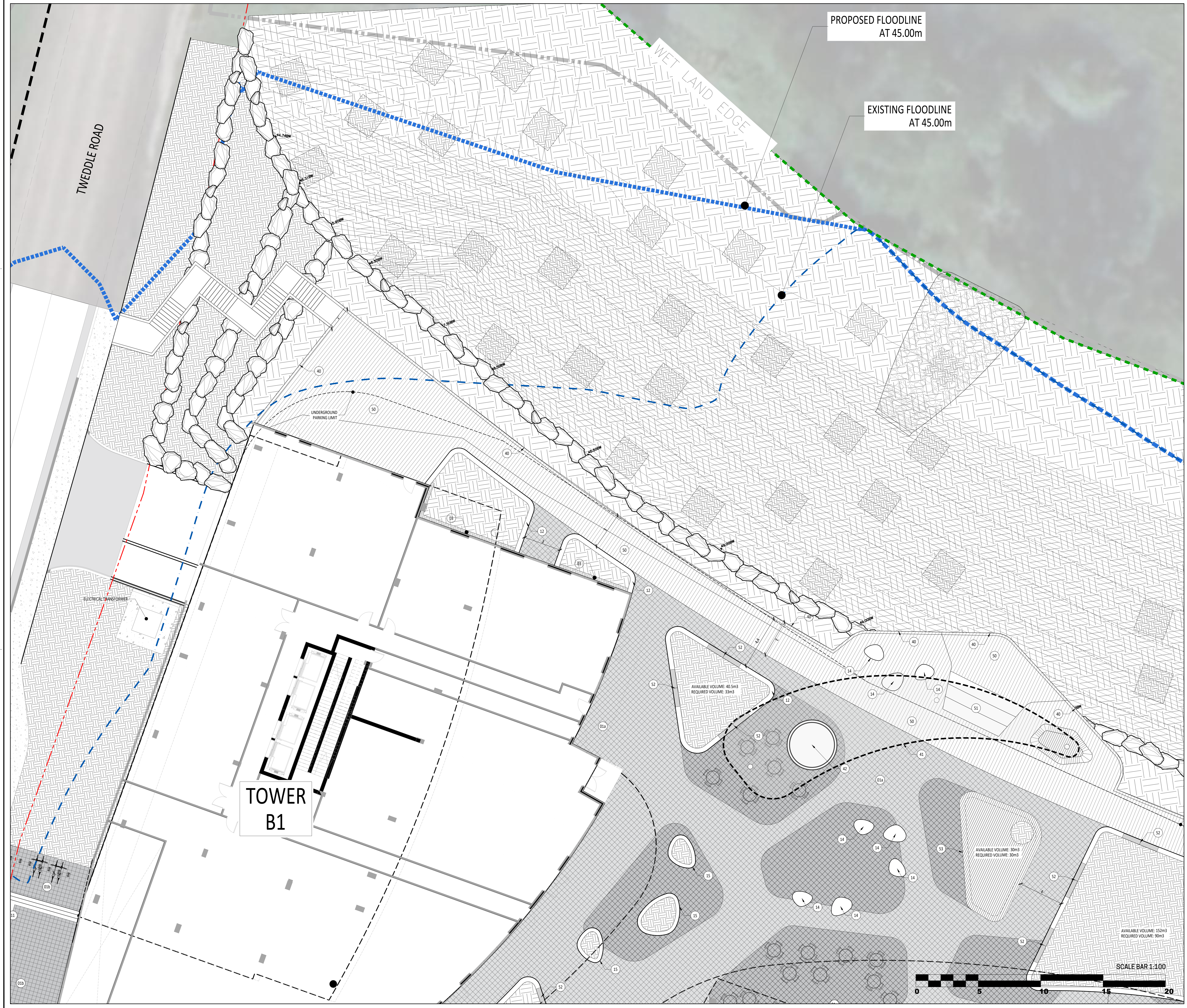
Metals structures

- 40 Handrail
- 41 Pergola
- 42 Pavillon/Kiosk

Wood structures

- 50 Deck surface
- 51 Stairs
- 52 Seating mounted on concrete wall planter
- 53 Seating mounted on concrete platform





PROPOSED FLOODLINE
AT 45.00m

EXISTING FLOODLINE
AT 45.00m

WET LAND EDGE

TWEDDLE ROAD

TOWER
B1

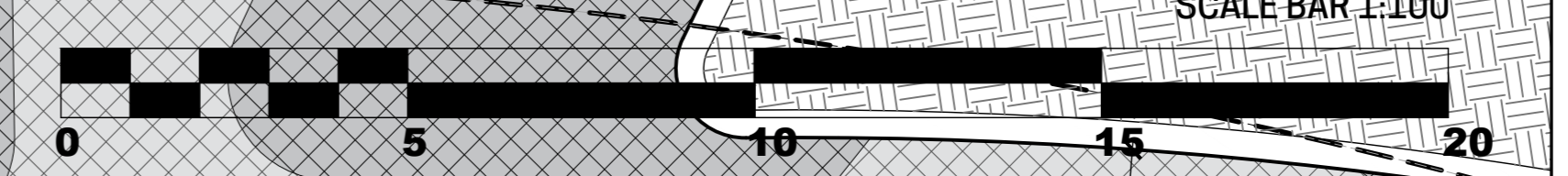
UNDERGROUND
PARKING UNIT

ELECTRICAL TRANSFORMER

AVAILABLE VOLUME: 40.5m³
REQUIRED VOLUME: 33m³

AVAILABLE VOLUME: 30m³
REQUIRED VOLUME: 30m³

AVAILABLE VOLUME: 152m³
REQUIRED VOLUME: 50m³



LEGEND

- Limit of work (Site grading limit)
- Property line
- Existing floodline
- Projected floodline
- Wetland edge
- Contour lines
- Proposed elevation
- TW Top of wall
- HE Top of curb
- HE Top of stairs
- HT Top of slope
- D Top of drain
- BW Bottom of wall
- BE Bottom of curb
- BE Bottom of stairs
- BT Bottom of slope
- PH High point
- Top of slope line
- Bottom of slope line
- Light fixture, refer to lighting plan
- Vegetation feature (see planting plan) Tree and shrub planting pit, minimum depth 1m
- Vegetation feature (see planting plan) Planting pit for shrubs & perennials, minimum depth 450 mm
- Vegetation feature (see planting plan) Planting pit for seedling and sod, minimum depth 150 mm

List of details on plans

Key: Description

Surfaces

- 01a Paver
- 02b Pave on structural slab
- 02 Rubber synthetic surface
- 03 River rock strip edge (bande de propreté)

Stairs, walls & precast concrete elements

- 11 Concrete stairs
- 12 Precast concrete wall & planter
- 13 Precast concrete platform
- 14 Precast concrete pebble shaped seat
- 15 Precast concrete pebble shaped planter

Equipment & site furniture

- 20 Bike Rack
- 21 Waste and recycling containers
- 22 Parcel
- 23 Trekfit equipment

Water features

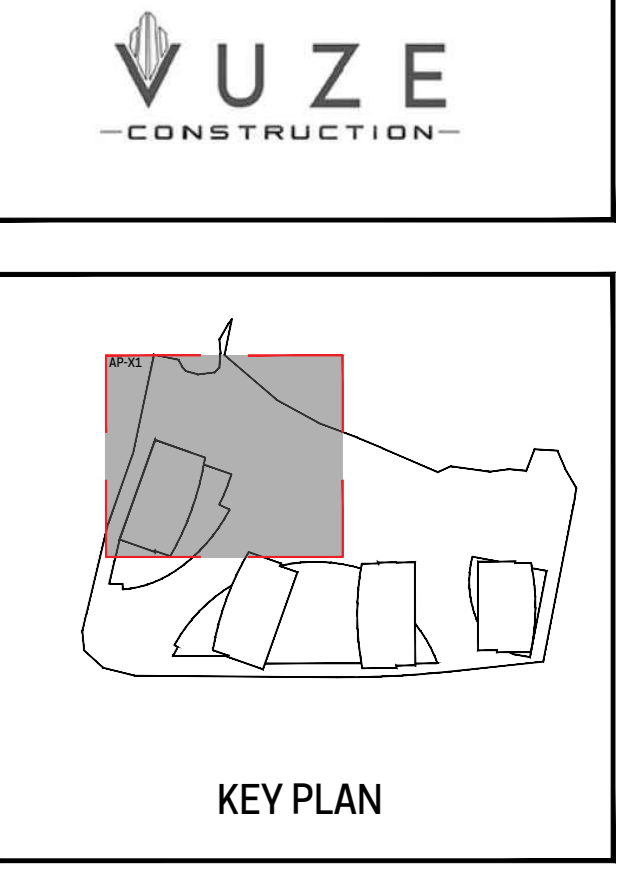
- 30 Water fountain

Metals structures

- 40 Handrail
- 41 Pergola
- 42 Pavilion/Kiosk

Wood structures

- 50 Deck surface
- 51 Stairs
- 52 Seating mounted on concrete wall planter
- 53 Seating mounted on concrete platform



Revisions

No.	Description	Appr.	Date
1	For SPA application	S.G.	05/03/2025
2	For SPA application RD1	S.G.	09/25/2025
3	For SPA application RD2	S.G.	11/20/2025
4	For SPA application RD3	S.G.	02/18/26

DO NOT USE FOR
CONSTRUCTION

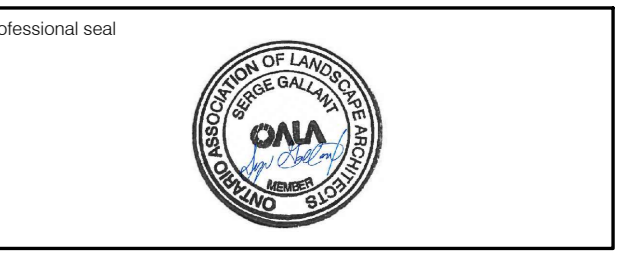
Notes:

A- LOT 30 CONCESSION 1 (OLD SURVEY) GEOGRAPHIC TOWNSHIP OF CUMBERLAND CITY OF OTTAWA, PREPARED BY ANNIS, OSULLIVAN, VOLLEBEK LTD., DATED OCTOBER 15TH, 2024.

B- PROPERTY BOUNDARY INFORMATION AND PIN AS WELL AS WETLAND EDGE, PSM 30m BUFFER, PATTERSON OF TOP OF SLOPE, 15m SETBACK AND HAZARD LANDS LIMITS DERIVED FROM PLAN OF SURVEY DATED 15TH 2024 11TH, AMENDED APRIL 30TH, 2025, BY ANNIS, OSULLIVAN, VOLLEBEK LTD. PLAN 25483-24 M. CHENER PI LISD C1 OS CUMBERLAND O DS.

- The Contractor must verify all site existing conditions before beginning the work and inform the Project Director of any errors, omissions or contradictions.
- Existing grades indicated on the plan come from the survey provided by the owner.
- The Contractor must not cut down any existing vegetation without the approval of the Project Director.
- Implementation of the works on site must be approved by the Project Director.
- The Contractor must use the CAD file for implementation of all work.
- The contractor must verify the amounts specified in the schedule and notify the landscape architect of any errors, omissions or contradictions before the close of the bid.

PP PROJET PAYSAGE



Project name:
1015 TWEDDLE ROAD

002-02-25-0038 & 007-12-25-0073 // Plan Number # 19417

Drawing title:
DESCRIPTION PLAN

Scale: 1:100

Designed by:
S. Gallant, G. Ostaler

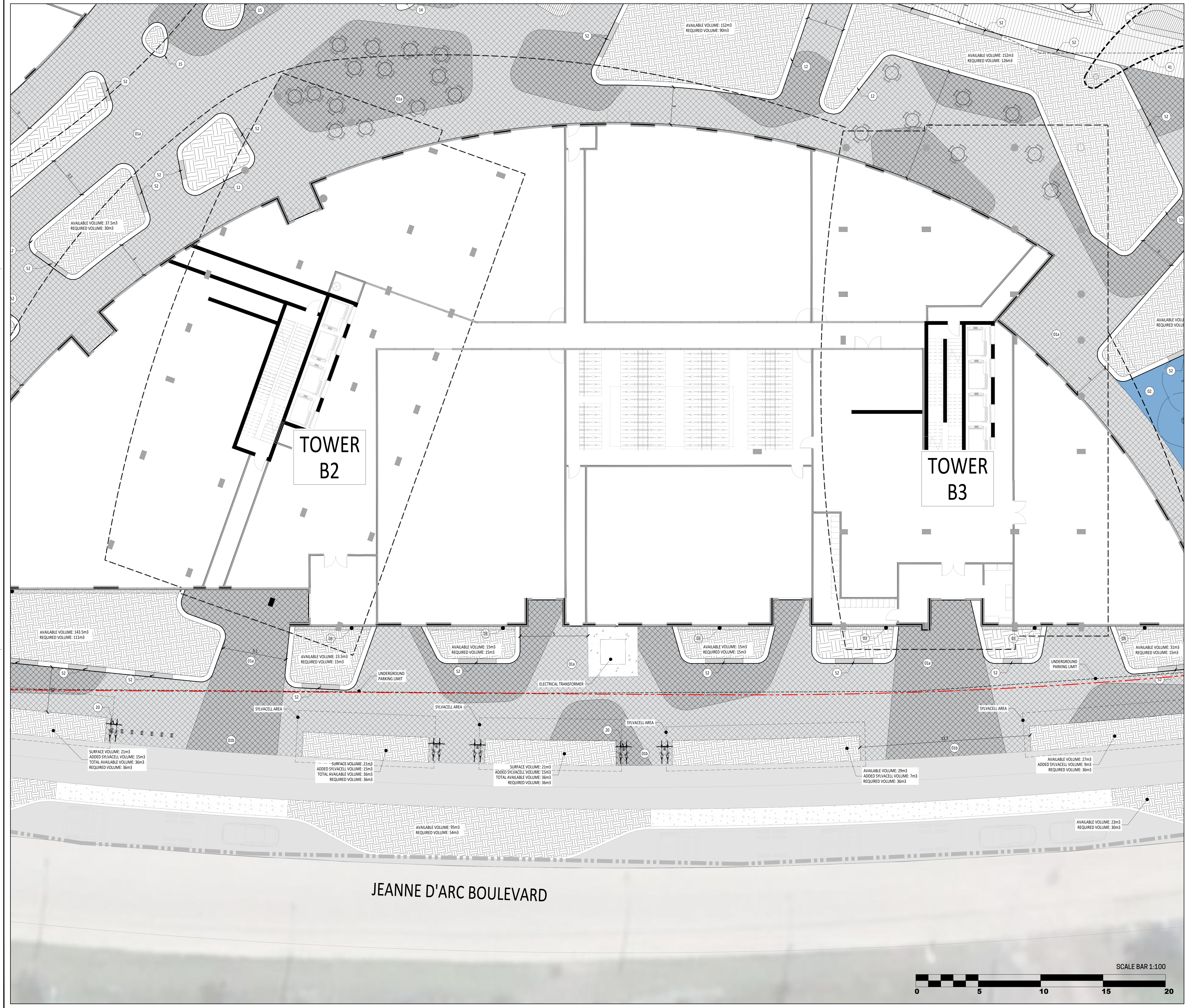
Drawn by:
V. Suarez, I. Sobral

Approved by:
S. Gallant

March 2025

21-695

AP-21



LEGEND

- Limit of work (Site grading limit)
- Property line
- Existing floodline
- Projected floodline
- Wetland edge
- Contour lines
- Proposed elevation
- TW Top of wall
- BE Bottom of wall
- HE Top of curb
- BE Bottom of curb
- HT Top of slope
- BT Bottom of slope
- D Top of drain
- PH High point
- Top of slope line
- Bottom of slope line
- Light fixture, refer to lighting plan
- Vegetation feature (see planting plan) Tree and shrub planting pit, minimum depth 1m
- Vegetation feature (see planting plan) Planting pit for shrubs & perennials, minimum depth 450 mm
- Vegetation feature (see planting plan) Planting pit for seeding and sod, minimum depth 150 mm

List of details on plans

Key

Surfaces

- 01a Pavement
- 02a Pavement on structural slab
- 02 Rubber synthetic surface
- 03 River rock strip edge (bande de propreté)

Stairs, walls & precast concrete elements

- 11 Concrete stairs
- 12 Precast concrete wall & planter
- 13 Precast concrete platform
- 14 Precast concrete pebble shaped seat
- 15 Precast concrete pebble shaped planter

Equipment & site furniture

- 20 Bike rack
- 21 Waste and recycling containers
- 22 Parcel
- 23 Traffic equipment

Water features

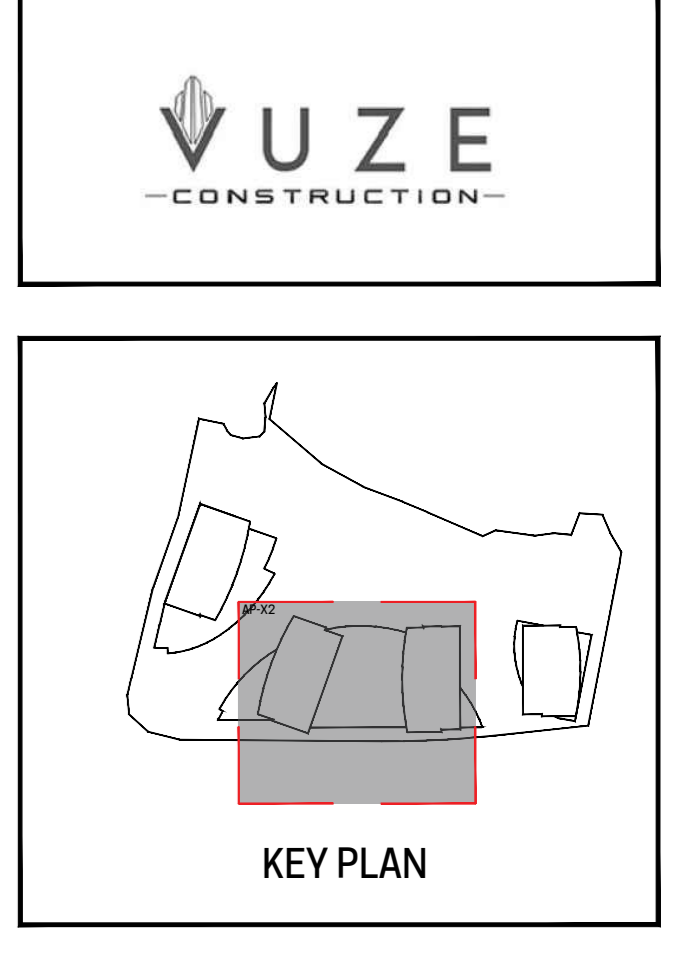
- 30 Water fountain

Metal structures

- 40 Handrail
- 41 Pergola
- 42 Pavilion/kiosk

Wood structures

- 50 Deck surface
- 51 Stairs
- 52 Seating mounted on concrete wall planter
- 53 Seating mounted on concrete platform



Revisions

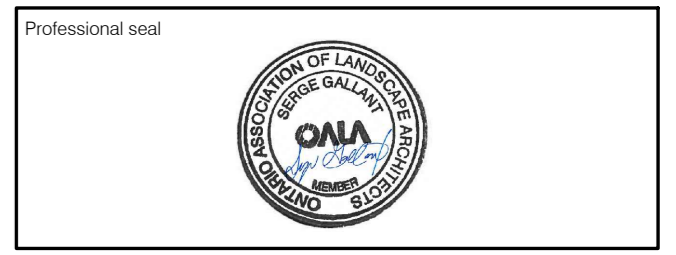
No.	Description	Appr.	Date
1	For SPA application	S.G.	05/03/2025
2	For SPA application RD1	S.G.	09/23/2025
3	For SPA application RD2	S.G.	11/20/2025
4	For SPA application RD3	S.G.	02/18/26

DO NOT USE FOR CONSTRUCTION

Notes:

- LOT 30 CONCESSION 1 (OLD SURVEY) GEOGRAPHIC TOWNSHIP OF CUMBERLAND CITY OF OTTAWA, PREPARED BY ANNIS, O'SULLIVAN, VOLLEBEK LTD., DATED OCTOBER 15TH, 2024.
- PROPERTY BOUNDARY INFORMATION AND PIN AS WELL AS WETLAND EDGE, PSM 30m BUFFER, PATTERSON OF TOP OF SLOPE, 15m SETBACK AND HAZARD LANDS LIMITS DERIVED FROM PLAN OF SURVEY DATED 15TH 2024 11TH, AMENDED APRIL 30TH, 2025, BY ANNIS, O'SULLIVAN, VOLLEBEK LTD. PLAN 25483-24 M. CHENER PI LISD C1 OS CUMBERLAND O OS.

- The Contractor must verify all site existing conditions before beginning the work and inform the Project Director of any errors, omissions or contradictions.
- Existing grades indicated on the plan come from the survey provided by the owner.
- The Contractor must not cut down any existing vegetation without the approval of the Project Director.
- Implementation of the works on site must be approved by the Project Director.
- The Contractor must use the CAD file for implementation of all work.
- The contractor must verify the amounts specified in the schedule and notify the landscape architect of any errors, omissions or contradictions before the close of the bid.



Project name: **1015 TWEDDLE ROAD**

002-02-25-0038 & 007-12-25-0073 // Plan Number # 19417

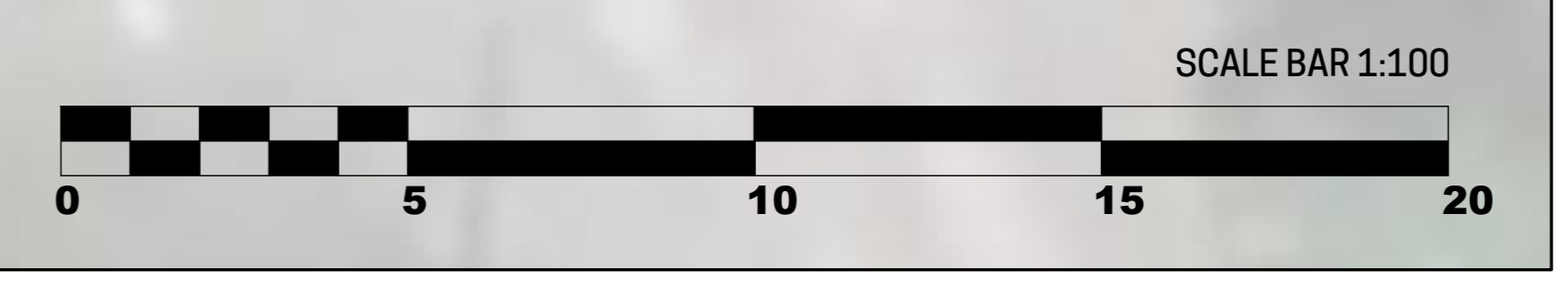
Sheet title: **DESCRIPTION PLAN**

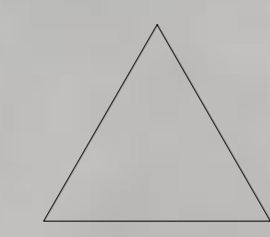
Scale: **1:100**

Designed by: S. Gallant, G. Costalar
 Drawn by: V. Suarez, I. Sobral
 Approved by: S. Gallant
 Date: March 2025

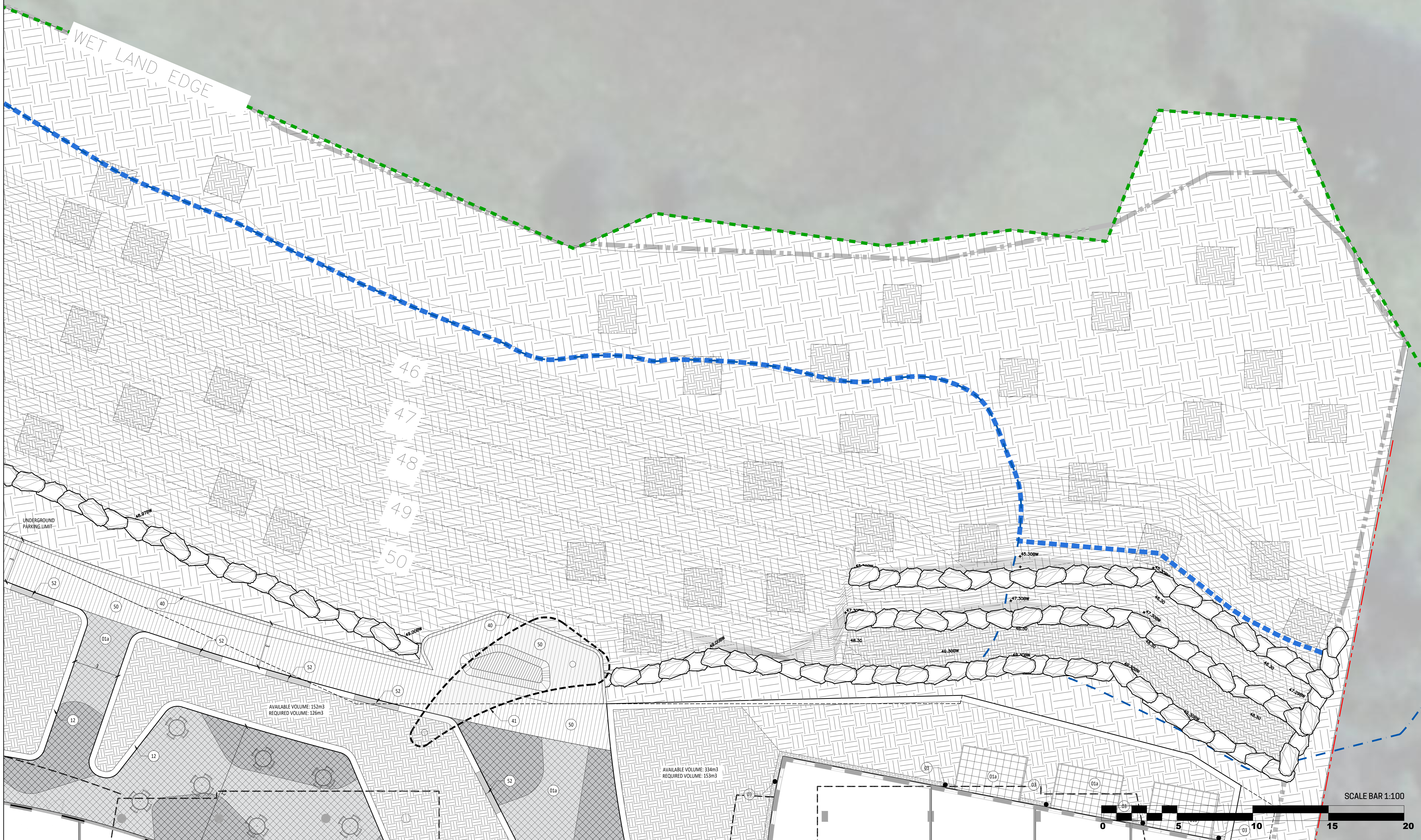
Sheet No.: **AP-22**

21-695





TOWARDS OTTAWA RIVER



LEGEND

- Limit of work (Site grading limit)
- Property line
- Existing floodline
- Projected floodline
- Wetland edge
- Contour lines
- Proposed elevation
- TW Top of wall
- HE Top of curb
- HE Top of stairs
- HT Top of slope
- D Top of drain
- BW Bottom of wall
- BB Bottom of curb
- BE Bottom of stairs
- BT Bottom of slope
- PH High point
- Top of slope line
- Bottom of slope line
- Light fixture, refer to lighting plan
- Vegetation feature (see planting plan) Tree and shrub planting pit, minimum depth 1m
- Vegetation feature (see planting plan) Planting pit for shrubs & perennials, minimum depth 450 mm
- Vegetation feature (see planting plan) Planting soil for seeding and sod, minimum depth 150 mm

List of details on plans

Key: Description

Surfaces

- 01a Paver
- 02b Pave on structural slab
- 02 Rubber synthetic surface
- 03 River rock strip edge (bande de propreté)

Stairs, walls & precast concrete elements

- 11 Concrete stairs
- 12 Precast concrete wall & planter
- 13 Precast concrete platform
- 14 Precast concrete pebble shaped seat
- 15 Precast concrete pebble shaped planter

Equipment & side furniture

- 20 Bike Rack
- 21 Waste and recycling containers
- 22 Parcel
- 23 Trekfit equipment

Water features

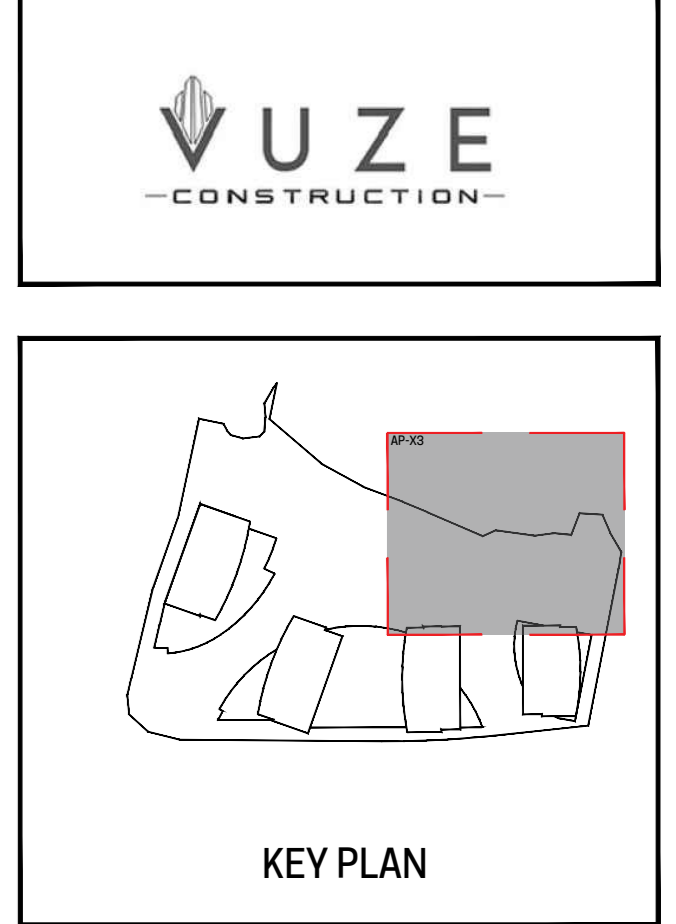
- 30 Water fountain

Metal structures

- 40 Handrail
- 41 Pergola
- 42 Pavilion/Nook

Wood structures

- 50 Deck surface
- 51 Stairs
- 52 Seating mounted on concrete wall planter
- 53 Seating mounted on concrete platform



Revisions

No.	Description	Appr.	Date
1	For SPA application	S.G.	05/03/2025
2	For SPA application RD1	S.G.	09/25/2025
3	For SPA application RD2	S.G.	11/20/2025
4	For SPA application RD3	S.G.	02/18/2026

DO NOT USE FOR CONSTRUCTION

Notes:

- A- LOT 30 CONCESSION 1 (OLD SURVEY) GEOGRAPHIC TOWNSHIP OF CUMBERLAND CITY OF OTTAWA, PREPARED BY ANNIS, OSULLIVAN, VOLLEBECK LTD., DATED OCTOBER 15TH, 2024.
- B- PROPERTY BOUNDARY INFORMATION AND PIN AS WELL AS WETLAND EDGE, PSM 30m BUFFER, PATTERSON OF TOP OF SLOPE, 15m SETBACK AND HAZARD LANDS LIMITS DERIVED FROM PLAN OF SURVEY DATED 15TH 2024 11TH, AMENDED APRIL 30TH, 2025, BY ANNIS, OSULLIVAN, VOLLEBECK LTD. PLAN 25483-24 M. CHENER PI L50 C1 OS CUMBERLAND O DS.

- The Contractor must verify all site existing conditions before beginning the work and inform the Project Director of any errors, omissions or contradictions.
- Existing grades indicated on the plan come from the survey provided by the owner.
- The Contractor must not cut down any existing vegetation without the approval of the Project Director.
- Implementation of the works on site must be approved by the Project Director.
- The Contractor must use the CAD file for implementation of all work.
- The contractor must verify the amounts specified in the schedule and notify the landscape architect of any errors, omissions or contradictions before the close of the bid.



Professional seal:

Project name: **1015 TWEDDLE ROAD**

002-02-25-0038 & 007-12-25-0073 // Plan Number # 19417

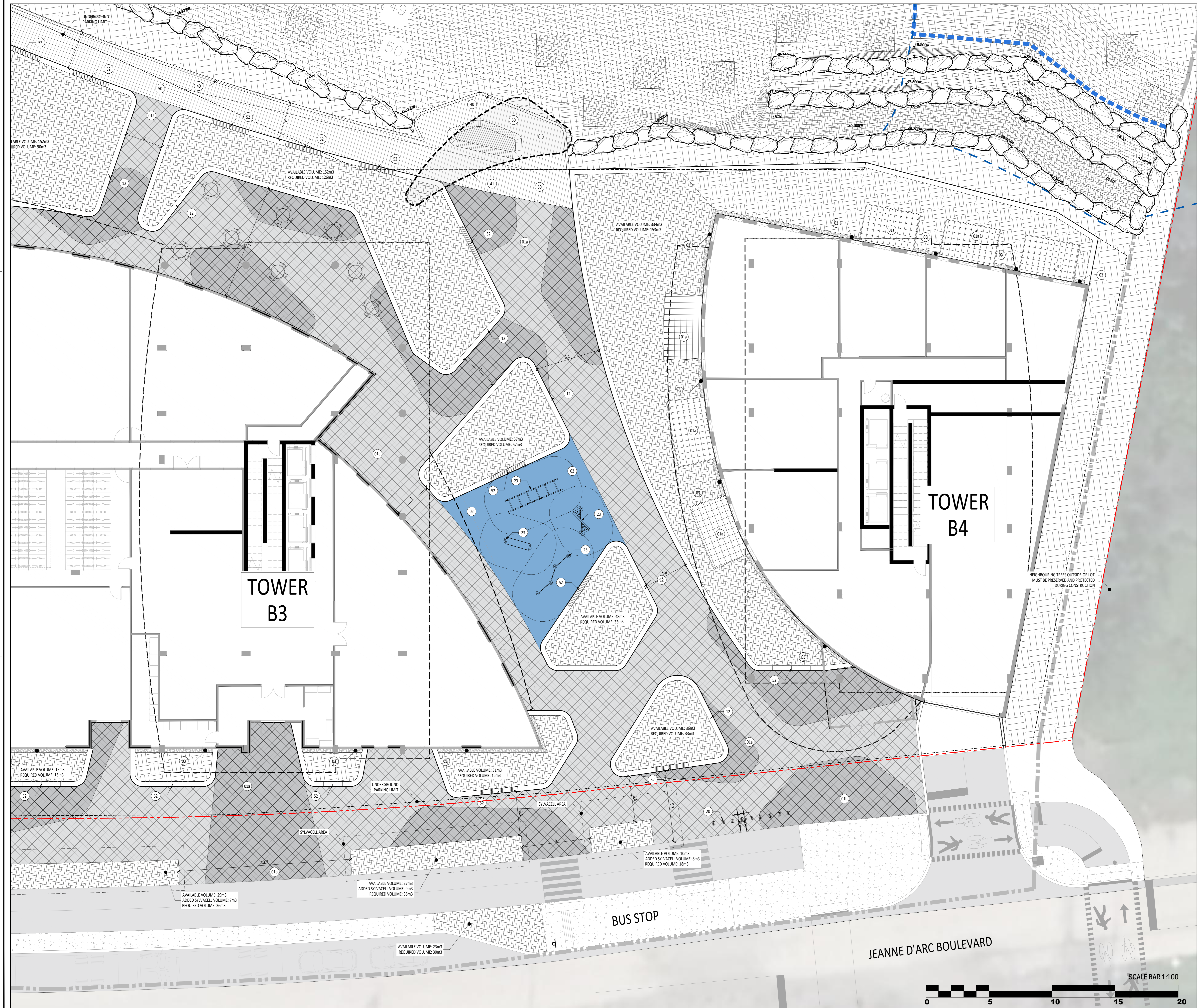
Drawing title: **DESCRIPTION PLAN**

Scale: 1:100

Designed by: S. Gallant, G. Costalar
 Drawn by: V. Suarez, I. Sobral
 Approved by: S. Gallant
 Date: March 2025

Project No.: **AP-23**

21-695



LEGEND

- Limit of work (Site grading limit)
- Property line
- Existing floodline
- Projected floodline
- Wetland edge
- Contour lines
- Proposed elevation
- Top of wall (TW), Top of curb (TC), Top of stairs (TE), Top of slope (TS), Top of drain (TD), Top of slope line (TSL), Bottom of slope line (BSL)
- Bottom of wall (BW), Bottom of curb (BC), Bottom of stairs (BE), Bottom of slope (BS), High point (PH)
- Light fixture, refer to lighting plan
- Vegetation feature (see planting plan): Tree and shrub planting pit, minimum depth 1m; Planting pit for shrubs & perennials, minimum depth 450 mm; Planting pit for seedling and sod, minimum depth 150 mm

List of details on plans

Key:

Surfaces:

- 01a Pavé
- 02a Pavé on structural slab
- 02 Rubber synthetic surface
- 03 River rock strip edge (bande de propreté)

Stairs, walls & precast concrete elements:

- 11 Concrete stairs
- 12 Precast concrete wall & planter
- 13 Precast concrete platform
- 14 Precast concrete pebble shaped seat
- 15 Precast concrete pebble shaped planter

Equipment & site furniture:

- 20 Bike rack
- 21 Waste and recycling containers
- 22 Parcel
- 23 Trekfit equipment

Water features:

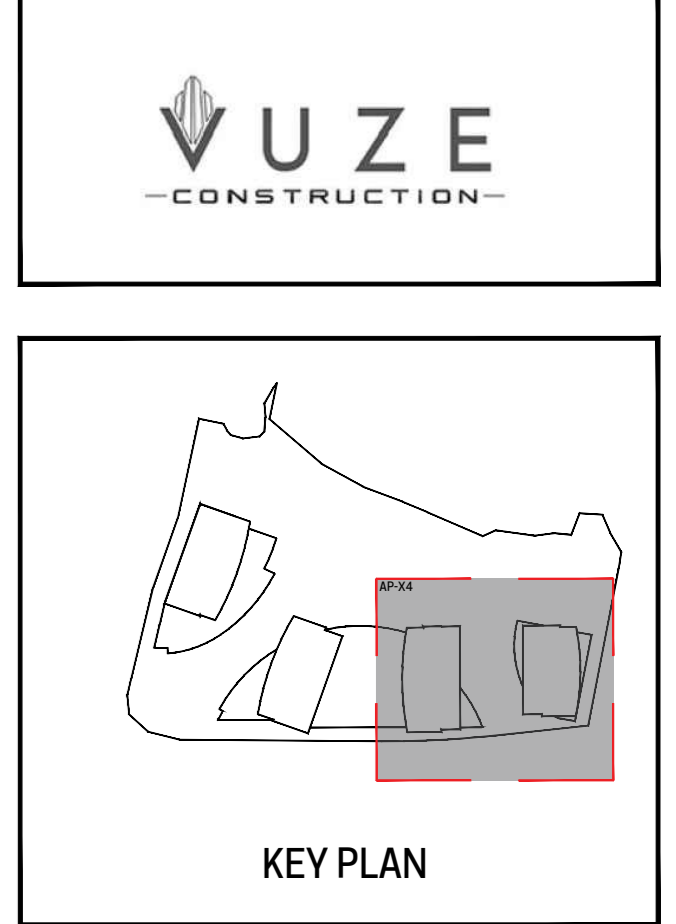
- 30 Water fountain

Metals structures:

- 40 Handrail
- 41 Pergola
- 42 Pavilion/kiosk

Wood structures:

- 50 Deck surface
- 51 Stairs
- 52 Seating mounted on concrete wall planter
- 53 Seating mounted on concrete platform



Revisions

No.	Description	Appr.	Date
1	For SPA application	S.G.	05/03/2025
2	For SPA application R01	S.G.	09/23/2025
3	For SPA application R02	S.G.	11/20/2025
4	For SPA application R03	S.G.	02/18/26

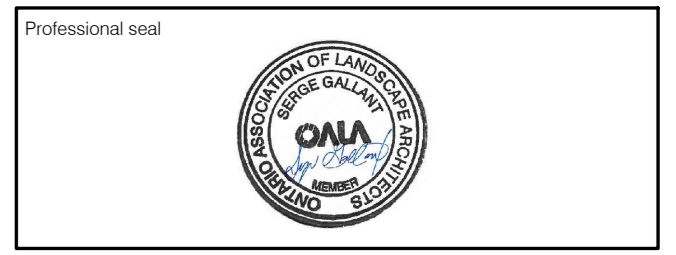
DO NOT USE FOR CONSTRUCTION

Notes:

A- LOT 30 CONCESSION 1 (OLD SURVEY) GEOGRAPHIC TOWNSHIP OF CUMBERLAND CITY OF OTTAWA, PREPARED BY ANNIS, O'SULLIVAN, VOLLEBEK LTD., DATED OCTOBER 15TH, 2024.

B- PROPERTY BOUNDARY INFORMATION AND PIN AS WELL AS WETLAND EDGE, P30m BUFFER, PATTERSON OF TOP OF SLOPE, 15m SETBACK AND HAZARD LANDS LIMITS DERIVED FROM PLAN OF SURVEY DATED 15TH, 2024 11TH, AMENDED APRIL 30TH, 2025, BY ANNIS, O'SULLIVAN, VOLLEBEK LTD. PLAN 25483-24 M. CHENIER P1 L50 C1 OS CUMBERLAND O.D.S.

- The Contractor must verify all site existing conditions before beginning the work and inform the Project Director of any errors, omissions or contradictions.
- Existing grades indicated on the plan come from the survey provided by the owner.
- The Contractor must not cut down any existing vegetation without the approval of the Project Director.
- Implementation of the works on site must be approved by the Project Director.
- The Contractor must use the CAD file for implementation of all work.
- The contractor must verify the amounts specified in the schedule and notify the landscape architect of any errors, omissions or contradictions before the close of the bid.



Professional seal

Project name: **1015 TWEDDLE ROAD**

002-02-25-0038 & 007-12-25-0073 // Plan Number # 19417

Drawing title: **DESCRIPTION PLAN**

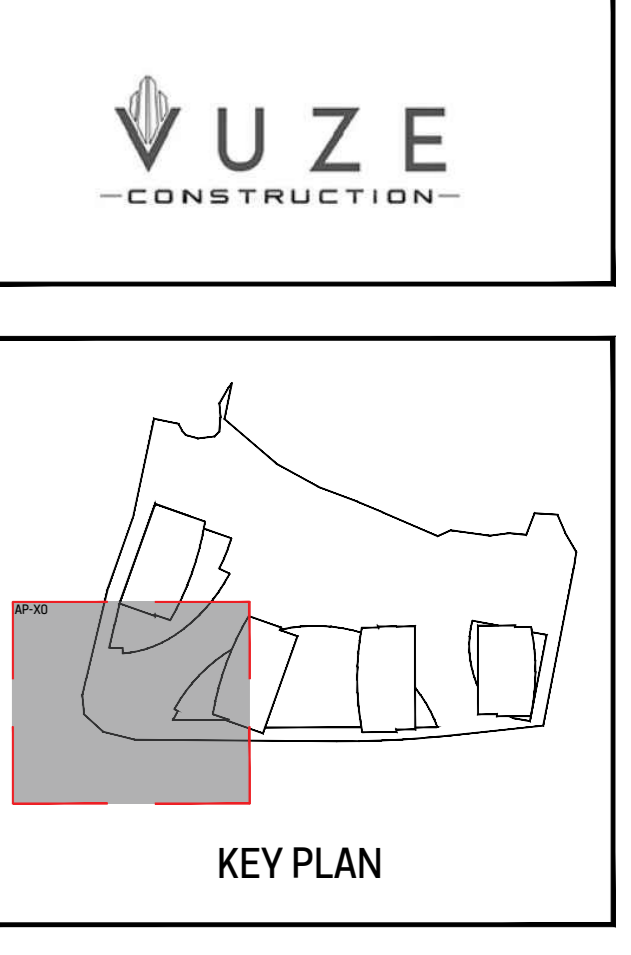
Scale: **1:100**

Designed by: S. Gallant, G. Dostaler
 Drawn by: V. Suarez, I. Sobral
 Approved by: S. Gallant
 Date: March 2025

Sheet No: **AP-24**

21-695





Revisions

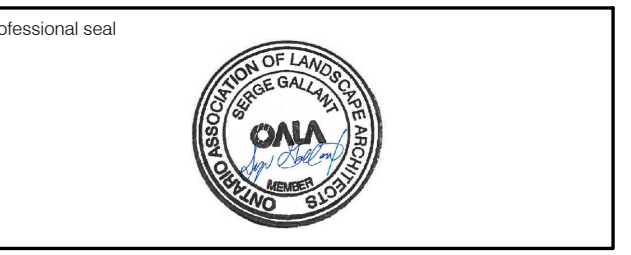
No.	Description	Appr.	Date
1	For SPA application	S.G.	05/03/2025
2	For SPA application RD1	S.G.	09/25/2025
3	For SPA application RD2	S.G.	11/20/2025
4	For SPA application RD3	S.G.	02/18/26

DO NOT USE FOR CONSTRUCTION

Notes:

- LOT 30 CONVESSION 1 (OLD SURVEY) GEOGRAPHIC TOWNSHIP OF CUMBERLAND CITY OF OTTAWA, PREPARED BY ANNIS, OSULLIVAN, VOLLEBEK LTD., DATED OCTOBER 15TH, 2024.
- PROPERTY BOUNDARY INFORMATION AND PIN AS WELL AS WETLAND EDGE, PSW 30m BUFFER, AND HAZARD LANDS LIMITS DERIVED FROM PLAN OF SURVEY DATED 15TH 2024 11TH, AMENDED APRIL 30TH, 2025, BY ANNIS, OSULLIVAN, VOLLEBEK LTD. PLAN 25483-24 M. CHENER PI LISO C1 OS CUMBERLAND O DS.

- The Contractor must verify all site existing conditions before beginning the work and inform the Project Director of any errors, omissions or contradictions.
- Existing grades indicated on the plan come from the survey provided by the owner.
- The Contractor must not cut down any existing vegetation without the approval of the Project Director.
- Implementation of the works on site must be approved by the Project Director.
- The Contractor must use the CAD file for implementation of all work.
- The contractor must verify the amounts specified in the schedule and notify the landscape architect of any errors, omissions or contradictions before the close of the bid.



Project name
1015 TWEDDLE ROAD

002-02-25-0038 & 007-12-25-0073 // Plan Number # 15417

Drawing title
PLANTING PLAN

Scale
1:100

Designed by
S. Gallant, G. Costalar

Approved by
V. Suarez, I. Sobral

Approved by
S. Gallant

March 2025

21-695

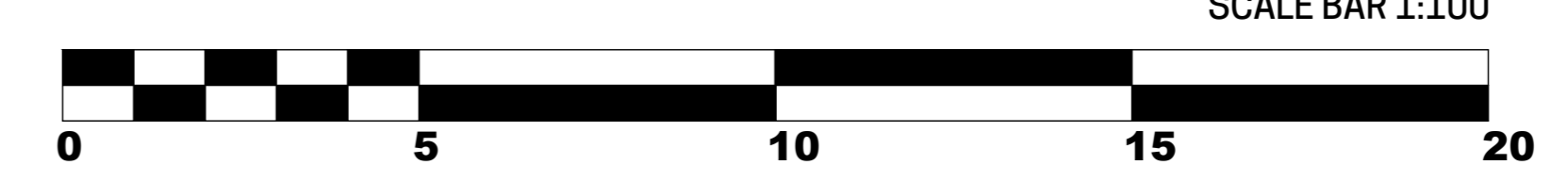
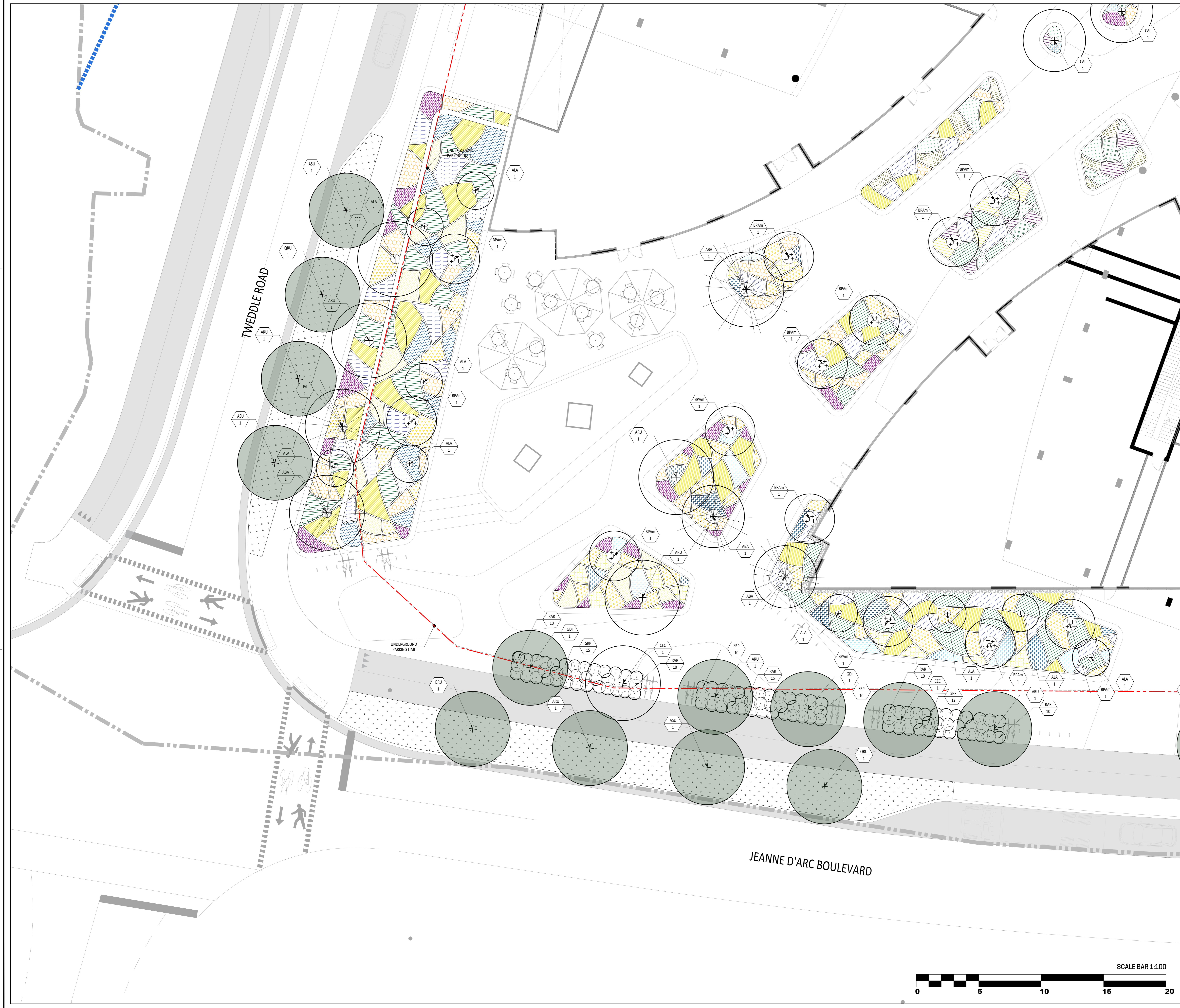
- LEGEND**
- Limit of work (Site grading limit)
 - Property line
 - Existing floodline
 - Projected floodline
 - Wetland edge
 - Contour lines
 - Proposed deciduous tree and shrub
 - Proposed coniferous tree and shrub
 - Proposed trees in public domain area
 - Grass (turf)
- SEEDING**
- Mix 1: Floodline zone
Andropogon gerardii, Calamagrostis canadensis, Carex lurida, Carex vulpinoidea, Elymus canadensis, Glycyrrhiza canadensis, Juncus effusus, Sorghum atrovirens, Verbena hastata, Iro versicolor, Chione glabra, Actaeopis racemosa
 - Mix 2: Rewilding zone
Andropogon gerardii, Carex lurida, Carex vulpinoidea, Elymus canadensis, Achillea millefolium, Agrostis foeniculifera, Symphyotrichum cordifolium, Achnaceis sylvatica
 - Mix 3: Pollinator wildflower mix
Achillea millefolium, Actaeopis racemosa, Anemone canadensis, Chamaenerion angustifolium, Helianthus scaberrimus, Monarda filifolia, Desmodium illinoense, Solidago nemoralis, Symphyotrichum cordifolium
- PERENNIALS**
*Note: All perennials in the list are native to Ontario.
- FERNS**
- Cystopteris bulbifera (bulblet fern), 1L pot.
 - Dryopteris marginalis (marginal shield fern), 1L pot.
- GRASSES**
- Sporobolus heterolepis (prairie dropseed), 1L pot.
 - Deschampsia flexuosa (wavy-hair grass), 1L pot.
 - Carex eburnea (ivory sedge), 1L pot.
- FLOWERING PERENNIALS**
- Allium cornutum (nodding onion), 1L pot.
 - Eurybia divaricata (white wood aster), 1L pot.
 - Anemone canadensis (Canada anemone), 1L pot.
 - Taraxacum officinale (heart-leaved dandelion), 1L pot.
 - Centaurea jacobina (lanceleaf cornflower), 1L pot.
 - Veronica simplex (narrowleaf veronica), 1L pot.
 - Anaphalis margaritacea (pearly everlasting), 1L pot.
 - Geum triflorum (prairie smoke), 1L pot.
 - Geranium maculatum (wild geranium), 1L pot.
- Tree and shrub planting key**

PLANTING LIST

No.	Qty	Latin name	Common name	Size	Notes / Comments
ALA 1	10	Andropogon gerardii	Common Sorghum	C 10cm	Y 10m
ALA 2	10	Andropogon gerardii	Common Sorghum	C 10cm	Y 10m
ALA 3	10	Andropogon gerardii	Common Sorghum	C 10cm	Y 10m
ALA 4	10	Andropogon gerardii	Common Sorghum	C 10cm	Y 10m
ALA 5	10	Andropogon gerardii	Common Sorghum	C 10cm	Y 10m
ALA 6	10	Andropogon gerardii	Common Sorghum	C 10cm	Y 10m
ALA 7	10	Andropogon gerardii	Common Sorghum	C 10cm	Y 10m
ALA 8	10	Andropogon gerardii	Common Sorghum	C 10cm	Y 10m
ALA 9	10	Andropogon gerardii	Common Sorghum	C 10cm	Y 10m
ALA 10	10	Andropogon gerardii	Common Sorghum	C 10cm	Y 10m
ALA 11	10	Andropogon gerardii	Common Sorghum	C 10cm	Y 10m
ALA 12	10	Andropogon gerardii	Common Sorghum	C 10cm	Y 10m
ALA 13	10	Andropogon gerardii	Common Sorghum	C 10cm	Y 10m
ALA 14	10	Andropogon gerardii	Common Sorghum	C 10cm	Y 10m
ALA 15	10	Andropogon gerardii	Common Sorghum	C 10cm	Y 10m
ALA 16	10	Andropogon gerardii	Common Sorghum	C 10cm	Y 10m
ALA 17	10	Andropogon gerardii	Common Sorghum	C 10cm	Y 10m
ALA 18	10	Andropogon gerardii	Common Sorghum	C 10cm	Y 10m
ALA 19	10	Andropogon gerardii	Common Sorghum	C 10cm	Y 10m
ALA 20	10	Andropogon gerardii	Common Sorghum	C 10cm	Y 10m
ALA 21	10	Andropogon gerardii	Common Sorghum	C 10cm	Y 10m
ALA 22	10	Andropogon gerardii	Common Sorghum	C 10cm	Y 10m
ALA 23	10	Andropogon gerardii	Common Sorghum	C 10cm	Y 10m
ALA 24	10	Andropogon gerardii	Common Sorghum	C 10cm	Y 10m
ALA 25	10	Andropogon gerardii	Common Sorghum	C 10cm	Y 10m
ALA 26	10	Andropogon gerardii	Common Sorghum	C 10cm	Y 10m
ALA 27	10	Andropogon gerardii	Common Sorghum	C 10cm	Y 10m
ALA 28	10	Andropogon gerardii	Common Sorghum	C 10cm	Y 10m
ALA 29	10	Andropogon gerardii	Common Sorghum	C 10cm	Y 10m
ALA 30	10	Andropogon gerardii	Common Sorghum	C 10cm	Y 10m

PLANTING LIST

No.	Qty	Latin name	Common name	Size	Notes / Comments
ALA 1	10	Andropogon gerardii	Common Sorghum	C 10cm	Y 10m
ALA 2	10	Andropogon gerardii	Common Sorghum	C 10cm	Y 10m
ALA 3	10	Andropogon gerardii	Common Sorghum	C 10cm	Y 10m
ALA 4	10	Andropogon gerardii	Common Sorghum	C 10cm	Y 10m
ALA 5	10	Andropogon gerardii	Common Sorghum	C 10cm	Y 10m
ALA 6	10	Andropogon gerardii	Common Sorghum	C 10cm	Y 10m
ALA 7	10	Andropogon gerardii	Common Sorghum	C 10cm	Y 10m
ALA 8	10	Andropogon gerardii	Common Sorghum	C 10cm	Y 10m
ALA 9	10	Andropogon gerardii	Common Sorghum	C 10cm	Y 10m
ALA 10	10	Andropogon gerardii	Common Sorghum	C 10cm	Y 10m
ALA 11	10	Andropogon gerardii	Common Sorghum	C 10cm	Y 10m
ALA 12	10	Andropogon gerardii	Common Sorghum	C 10cm	Y 10m
ALA 13	10	Andropogon gerardii	Common Sorghum	C 10cm	Y 10m
ALA 14	10	Andropogon gerardii	Common Sorghum	C 10cm	Y 10m
ALA 15	10	Andropogon gerardii	Common Sorghum	C 10cm	Y 10m
ALA 16	10	Andropogon gerardii	Common Sorghum	C 10cm	Y 10m
ALA 17	10	Andropogon gerardii	Common Sorghum	C 10cm	Y 10m
ALA 18	10	Andropogon gerardii	Common Sorghum	C 10cm	Y 10m
ALA 19	10	Andropogon gerardii	Common Sorghum	C 10cm	Y 10m
ALA 20	10	Andropogon gerardii	Common Sorghum	C 10cm	Y 10m
ALA 21	10	Andropogon gerardii	Common Sorghum	C 10cm	Y 10m
ALA 22	10	Andropogon gerardii	Common Sorghum	C 10cm	Y 10m
ALA 23	10	Andropogon gerardii	Common Sorghum	C 10cm	Y 10m
ALA 24	10	Andropogon gerardii	Common Sorghum	C 10cm	Y 10m
ALA 25	10	Andropogon gerardii	Common Sorghum	C 10cm	Y 10m
ALA 26	10	Andropogon gerardii	Common Sorghum	C 10cm	Y 10m
ALA 27	10	Andropogon gerardii	Common Sorghum	C 10cm	Y 10m
ALA 28	10	Andropogon gerardii	Common Sorghum	C 10cm	Y 10m
ALA 29	10	Andropogon gerardii	Common Sorghum	C 10cm	Y 10m
ALA 30	10	Andropogon gerardii	Common Sorghum	C 10cm	Y 10m





LEGEND

- Limit of work (Site grading limit)
- Property line
- Existing floodline
- Projected floodline
- Wetland edge
- Contour lines
- Proposed deciduous tree and shrub
- Proposed coniferous tree and shrub
- Proposed trees in public domain area
- Grass (turf)

SEEDING

- Mix 1: Floodline zone
Andropogon gerardii, Calamagrostis canadensis, Carex lurida, Carex vulpocarpa, Elymus canadensis, Glycyrrhiza lepidota, Sorghum nutans, Sorghum arifolium, Sorghum intrans, Sorghum bicolor, Sorghum nutans, Sorghum arifolium, Sorghum intrans, Sorghum bicolor, Sorghum nutans, Sorghum arifolium, Sorghum intrans, Sorghum bicolor
- Mix 2: Rewilding zone
Andropogon gerardii, Carex lurida, Carex vulpocarpa, Elymus canadensis, Achillea millefolium, Agrostis foeniculifera, Symphyotrichum concoloratum, Achillea millefolium
- Mix 3: Pollinator wildflower mix
Achillea millefolium, Asclepias syriaca, Asclepias tuberosa, Chamaenerion angustifolium, Helianthus scaberrimus, Monarda filifolia, Desmodium illinoense, Dolichopogon nemorosus, Symphyotrichum concoloratum

PERENNIALS
*Note: All perennials in the list are native to Ontario.

FERNS

- Cystopteris bulbifera (bulbifer fern), 11 pot.
- Dryopteris marginalis (marginal shield fern), 11 pot.

GRASSES

- Sporobolus heterolepis (prairie dropseed), 11 pot.
- Deschampsia flexuosa (wavy-hair grass), 11 pot.
- Carex edurena (ivory sedge), 11 pot.

FLOWERING PERENNIALS

- Allium cornutum (nodding onion), 11 pot.
- Erythronium albidum (white wood aster), 11 pot.
- Anemone canadensis (Canada anemone), 11 pot.
- Taraxacum officinale (heart-leaved dandelion), 11 pot.
- Centaurea jacobina (lanceleaf coreopsis), 11 pot.
- Verbena simplex (narrowleaf verben), 11 pot.
- Anaphalis margaritacea (pearly everlasting), 11 pot.
- Geum triflorum (prairie smoke), 11 pot.
- Geranium maculatum (wild geranium), 11 pot.

Tree and shrub planting key

PLANTING LIST

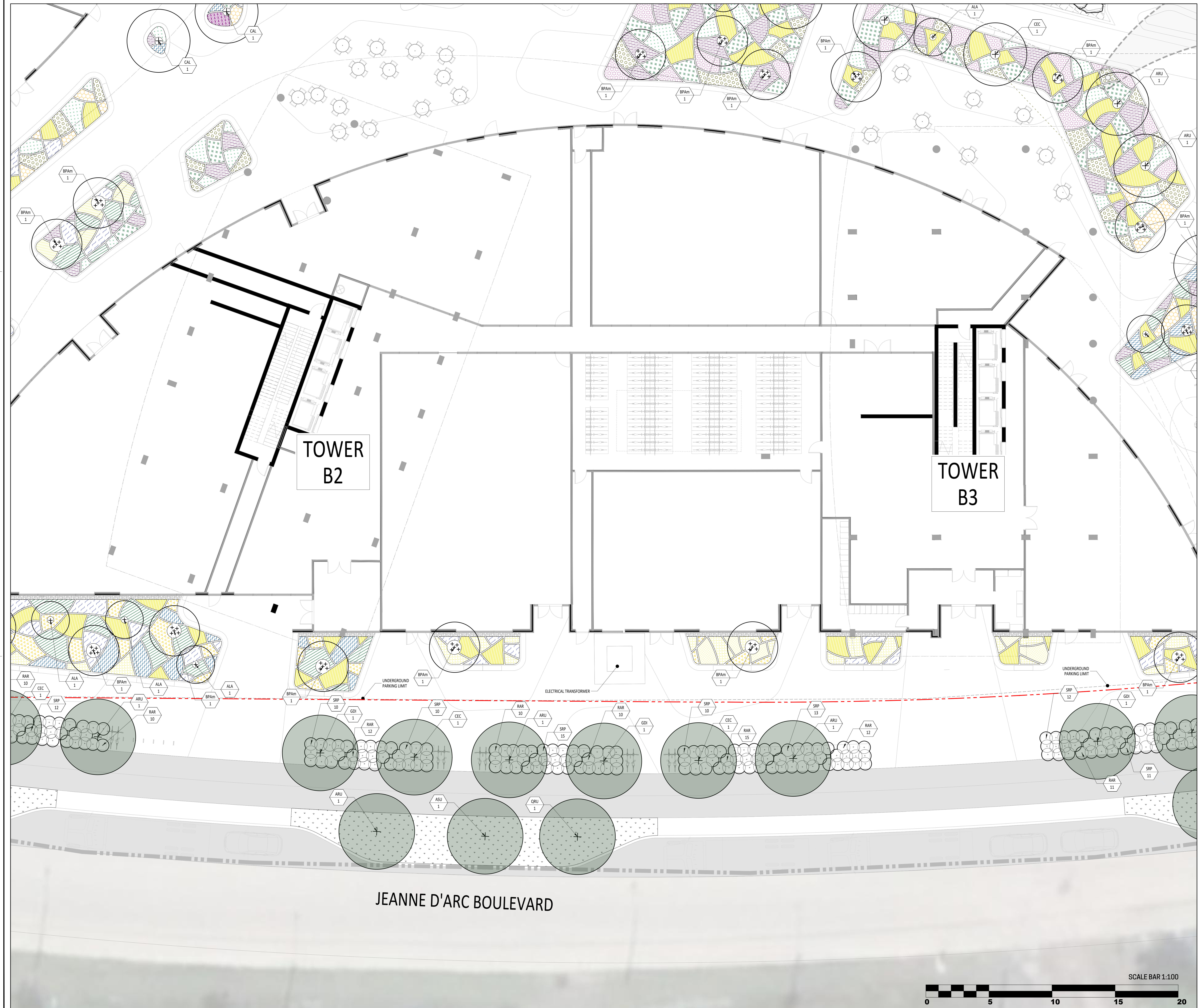
Lot	Tree Name	Common Name	Size	Qty	Group of
ASU 1	ASU 1.1	Andropogon gerardii	C. 10cm	1	12
	ASU 1.2	Andropogon gerardii	C. 10cm	1	12
	ASU 1.3	Andropogon gerardii	C. 10cm	1	12
	ASU 1.4	Andropogon gerardii	C. 10cm	1	12
	ASU 1.5	Andropogon gerardii	C. 10cm	1	12
	ASU 1.6	Andropogon gerardii	C. 10cm	1	12
	ASU 1.7	Andropogon gerardii	C. 10cm	1	12
	ASU 1.8	Andropogon gerardii	C. 10cm	1	12
	ASU 1.9	Andropogon gerardii	C. 10cm	1	12
	ASU 1.10	Andropogon gerardii	C. 10cm	1	12
	ASU 1.11	Andropogon gerardii	C. 10cm	1	12
	ASU 1.12	Andropogon gerardii	C. 10cm	1	12
ABA 1	ABA 1.1	Andropogon gerardii	C. 10cm	1	12
	ABA 1.2	Andropogon gerardii	C. 10cm	1	12
	ABA 1.3	Andropogon gerardii	C. 10cm	1	12
	ABA 1.4	Andropogon gerardii	C. 10cm	1	12
	ABA 1.5	Andropogon gerardii	C. 10cm	1	12
	ABA 1.6	Andropogon gerardii	C. 10cm	1	12
	ABA 1.7	Andropogon gerardii	C. 10cm	1	12
	ABA 1.8	Andropogon gerardii	C. 10cm	1	12
	ABA 1.9	Andropogon gerardii	C. 10cm	1	12
	ABA 1.10	Andropogon gerardii	C. 10cm	1	12
	ABA 1.11	Andropogon gerardii	C. 10cm	1	12
	ARU 1	ARU 1.1	Andropogon gerardii	C. 10cm	1
ARU 1.2		Andropogon gerardii	C. 10cm	1	12
ARU 1.3		Andropogon gerardii	C. 10cm	1	12
ARU 1.4		Andropogon gerardii	C. 10cm	1	12
ARU 1.5		Andropogon gerardii	C. 10cm	1	12
ARU 1.6		Andropogon gerardii	C. 10cm	1	12
ARU 1.7		Andropogon gerardii	C. 10cm	1	12
ARU 1.8		Andropogon gerardii	C. 10cm	1	12
ARU 1.9		Andropogon gerardii	C. 10cm	1	12
ARU 1.10		Andropogon gerardii	C. 10cm	1	12
ARU 1.11		Andropogon gerardii	C. 10cm	1	12
PNI 1		PNI 1.1	Andropogon gerardii	C. 10cm	1
	PNI 1.2	Andropogon gerardii	C. 10cm	1	12
	PNI 1.3	Andropogon gerardii	C. 10cm	1	12
	PNI 1.4	Andropogon gerardii	C. 10cm	1	12
	PNI 1.5	Andropogon gerardii	C. 10cm	1	12
	PNI 1.6	Andropogon gerardii	C. 10cm	1	12
	PNI 1.7	Andropogon gerardii	C. 10cm	1	12
	PNI 1.8	Andropogon gerardii	C. 10cm	1	12
	PNI 1.9	Andropogon gerardii	C. 10cm	1	12
	PNI 1.10	Andropogon gerardii	C. 10cm	1	12
	PNI 1.11	Andropogon gerardii	C. 10cm	1	12
	BIE 2	BIE 2.1	Andropogon gerardii	C. 10cm	1
BIE 2.2		Andropogon gerardii	C. 10cm	1	12
BIE 2.3		Andropogon gerardii	C. 10cm	1	12
BIE 2.4		Andropogon gerardii	C. 10cm	1	12
BIE 2.5		Andropogon gerardii	C. 10cm	1	12
BIE 2.6		Andropogon gerardii	C. 10cm	1	12
BIE 2.7		Andropogon gerardii	C. 10cm	1	12
BIE 2.8		Andropogon gerardii	C. 10cm	1	12
BIE 2.9		Andropogon gerardii	C. 10cm	1	12
BIE 2.10		Andropogon gerardii	C. 10cm	1	12
BIE 2.11		Andropogon gerardii	C. 10cm	1	12
BPA 2		BPA 2.1	Andropogon gerardii	C. 10cm	1
	BPA 2.2	Andropogon gerardii	C. 10cm	1	12
	BPA 2.3	Andropogon gerardii	C. 10cm	1	12
	BPA 2.4	Andropogon gerardii	C. 10cm	1	12
	BPA 2.5	Andropogon gerardii	C. 10cm	1	12
	BPA 2.6	Andropogon gerardii	C. 10cm	1	12
	BPA 2.7	Andropogon gerardii	C. 10cm	1	12
	BPA 2.8	Andropogon gerardii	C. 10cm	1	12
	BPA 2.9	Andropogon gerardii	C. 10cm	1	12
	BPA 2.10	Andropogon gerardii	C. 10cm	1	12
	BPA 2.11	Andropogon gerardii	C. 10cm	1	12
	BE 1	BE 1.1	Andropogon gerardii	C. 10cm	1
BE 1.2		Andropogon gerardii	C. 10cm	1	12
BE 1.3		Andropogon gerardii	C. 10cm	1	12
BE 1.4		Andropogon gerardii	C. 10cm	1	12
BE 1.5		Andropogon gerardii	C. 10cm	1	12
BE 1.6		Andropogon gerardii	C. 10cm	1	12
BE 1.7		Andropogon gerardii	C. 10cm	1	12
BE 1.8		Andropogon gerardii	C. 10cm	1	12
BE 1.9		Andropogon gerardii	C. 10cm	1	12
BE 1.10		Andropogon gerardii	C. 10cm	1	12
BE 1.11		Andropogon gerardii	C. 10cm	1	12
SDI 1		SDI 1.1	Andropogon gerardii	C. 10cm	1
	SDI 1.2	Andropogon gerardii	C. 10cm	1	12
	SDI 1.3	Andropogon gerardii	C. 10cm	1	12
	SDI 1.4	Andropogon gerardii	C. 10cm	1	12
	SDI 1.5	Andropogon gerardii	C. 10cm	1	12
	SDI 1.6	Andropogon gerardii	C. 10cm	1	12
	SDI 1.7	Andropogon gerardii	C. 10cm	1	12
	SDI 1.8	Andropogon gerardii	C. 10cm	1	12
	SDI 1.9	Andropogon gerardii	C. 10cm	1	12
	SDI 1.10	Andropogon gerardii	C. 10cm	1	12
	SDI 1.11	Andropogon gerardii	C. 10cm	1	12
	CCA 1	CCA 1.1	Andropogon gerardii	C. 10cm	1
CCA 1.2		Andropogon gerardii	C. 10cm	1	12
CCA 1.3		Andropogon gerardii	C. 10cm	1	12
CCA 1.4		Andropogon gerardii	C. 10cm	1	12
CCA 1.5		Andropogon gerardii	C. 10cm	1	12
CCA 1.6		Andropogon gerardii	C. 10cm	1	12
CCA 1.7		Andropogon gerardii	C. 10cm	1	12
CCA 1.8		Andropogon gerardii	C. 10cm	1	12
CCA 1.9		Andropogon gerardii	C. 10cm	1	12
CCA 1.10		Andropogon gerardii	C. 10cm	1	12
CCA 1.11		Andropogon gerardii	C. 10cm	1	12
ARU 2		ARU 2.1	Andropogon gerardii	C. 10cm	1
	ARU 2.2	Andropogon gerardii	C. 10cm	1	12
	ARU 2.3	Andropogon gerardii	C. 10cm	1	12
	ARU 2.4	Andropogon gerardii	C. 10cm	1	12
	ARU 2.5	Andropogon gerardii	C. 10cm	1	12
	ARU 2.6	Andropogon gerardii	C. 10cm	1	12
	ARU 2.7	Andropogon gerardii	C. 10cm	1	12
	ARU 2.8	Andropogon gerardii	C. 10cm	1	12
	ARU 2.9	Andropogon gerardii	C. 10cm	1	12
	ARU 2.10	Andropogon gerardii	C. 10cm	1	12
	ARU 2.11	Andropogon gerardii	C. 10cm	1	12
	PNI 2	PNI 2.1	Andropogon gerardii	C. 10cm	1
PNI 2.2		Andropogon gerardii	C. 10cm	1	12
PNI 2.3		Andropogon gerardii	C. 10cm	1	12
PNI 2.4		Andropogon gerardii	C. 10cm	1	12
PNI 2.5		Andropogon gerardii	C. 10cm	1	12
PNI 2.6		Andropogon gerardii	C. 10cm	1	12
PNI 2.7		Andropogon gerardii	C. 10cm	1	12
PNI 2.8		Andropogon gerardii	C. 10cm	1	12
PNI 2.9		Andropogon gerardii	C. 10cm	1	12
PNI 2.10		Andropogon gerardii	C. 10cm	1	12
PNI 2.11		Andropogon gerardii	C. 10cm	1	12
SDI 2		SDI 2.1	Andropogon gerardii	C. 10cm	1
	SDI 2.2	Andropogon gerardii	C. 10cm	1	12
	SDI 2.3	Andropogon gerardii	C. 10cm	1	12
	SDI 2.4	Andropogon gerardii	C. 10cm	1	12
	SDI 2.5	Andropogon gerardii	C. 10cm	1	12
	SDI 2.6	Andropogon gerardii	C. 10cm	1	12
	SDI 2.7	Andropogon gerardii	C. 10cm	1	12
	SDI 2.8	Andropogon gerardii	C. 10cm	1	12
	SDI 2.9	Andropogon gerardii	C. 10cm	1	12
	SDI 2.10	Andropogon gerardii	C. 10cm	1	12
	SDI 2.11	Andropogon gerardii	C. 10cm	1	12
	CCA 2	CCA 2.1	Andropogon gerardii	C. 10cm	1
CCA 2.2		Andropogon gerardii	C. 10cm	1	12
CCA 2.3		Andropogon gerardii	C. 10cm	1	12
CCA 2.4		Andropogon gerardii	C. 10cm	1	12
CCA 2.5		Andropogon gerardii	C. 10cm	1	12
CCA 2.6		Andropogon gerardii	C. 10cm	1	12
CCA 2.7		Andropogon gerardii	C. 10cm	1	12
CCA 2.8		Andropogon gerardii	C. 10cm	1	12
CCA 2.9		Andropogon gerardii	C. 10cm	1	12
CCA 2.10		Andropogon gerardii	C. 10cm	1	12
CCA 2.11		Andropogon gerardii	C. 10cm	1	12
SAM 1		SAM 1.1	Andropogon gerardii	C. 10cm	1
	SAM 1.2	Andropogon gerardii	C. 10cm	1	12
	SAM 1.3	Andropogon gerardii	C. 10cm	1	12
	SAM 1.4	Andropogon gerardii	C. 10cm	1	12
	SAM 1.5	Andropogon gerardii	C. 10cm	1	12
	SAM 1.6	Andropogon gerardii	C. 10cm	1	12
	SAM 1.7	Andropogon gerardii	C. 10cm	1	12
	SAM 1.8	Andropogon gerardii	C. 10cm	1	12
	SAM 1.9	Andropogon gerardii	C. 10cm	1	12
	SAM 1.10	Andropogon gerardii	C. 10cm	1	12
	SAM 1.11	Andropogon gerardii	C. 10cm	1	12
	CAL 1	CAL 1.1	Andropogon gerardii	C. 10cm	1
CAL 1.2		Andropogon gerardii	C. 10cm	1	12
CAL 1.3		Andropogon gerardii	C. 10cm	1	12
CAL 1.4		Andropogon gerardii	C. 10cm	1	12
CAL 1.5		Andropogon gerardii	C. 10cm	1	12
CAL 1.6		Andropogon gerardii	C. 10cm	1	12
CAL 1.7		Andropogon gerardii	C. 10cm	1	12
CAL 1.8		Andropogon gerardii	C. 10cm	1	12
CAL 1.9		Andropogon gerardii	C. 10cm	1	12
CAL 1.10		Andropogon gerardii	C. 10cm	1	12
CAL 1.11		Andropogon gerardii	C. 10cm	1	12
CEC 1		CEC 1.1	Andropogon gerardii	C. 10cm	1
	CEC 1.2	Andropogon gerardii	C. 10cm	1	12
	CEC 1.3	Andropogon gerardii	C. 10cm	1	12
	CEC 1.4	Andropogon gerardii	C. 10cm	1	12
	CEC 1.5	Andropogon gerardii	C. 10cm	1	12
	CEC 1.6	Andropogon gerardii	C. 10cm	1	12
	CEC 1.7	Andropogon gerardii	C. 10cm	1	12
	CEC 1.8	Andropogon gerardii	C. 10cm	1	12
	CEC 1.9	Andropogon gerardii	C. 10cm	1	12
	CEC 1.10	Andropogon gerardii	C. 10cm	1	12
	CEC 1.11	Andropogon gerardii	C. 10cm	1	12
	GDI 1	GDI 1.1	Andropogon gerardii	C. 10cm	1
GDI 1.2		Andropogon gerardii	C. 10cm	1	12
GDI 1.3		Andropogon gerardii	C. 10cm	1	12
GDI 1.4		Andropogon gerardii	C. 10cm	1	12
GDI 1.5		Andropogon gerardii	C. 10cm	1	12
GDI 1.6		Andropogon gerardii	C. 10cm	1	12
GDI 1.7		Andropogon gerardii	C. 10cm	1	12
GDI 1.8		Andropogon gerardii	C. 10cm	1	12
GDI 1.9		Andropogon gerardii	C. 10cm	1	12
GDI 1.10		Andropogon gerardii	C. 10cm	1	12
GDI 1.11		Andropogon gerardii	C. 10cm	1	12

UZE CONSTRUCTION

KEY PLAN

Revisions

No.	Description	Appr.	Date
1	For SPA application	S.G.	05/03/2025
2	For SPA application RD1	S.G.	09/25/2025
3	For SPA application RD2	S.G.	11/20/2025
4	For SPA application RD3	S.G.	02/18/2026



LEGEND

- Limit of work (Site grading limit)
- Property line
- Existing floodline
- Projected floodline
- Wetland edge
- Contour lines
- Proposed deciduous tree and shrub
- Proposed coniferous tree and shrub
- Proposed trees in public domain area
- Grass (turf)

SEEDING

- Mix 1: Floodline zone
Andropogon gerardii, Calamagrostis canadensis, Carex lurida, Carex vulpinoidea, Elymus canadensis, Glycyrrhiza canadensis, Juncus effusus, Sorghum atroviride, Verbena hastata, Ironoxarcton, Cirsium glaberrimum, Achillea millefolium
- Mix 2: Raveling zone
Andropogon gerardii, Carex lurida, Carex vulpinoidea, Elymus canadensis, Achillea millefolium, Agrostis foeniculifera, Symphyotrichum cordifolium, Achillea millefolium
- Mix 3: Pollinator wildflower mix
Achillea millefolium, Achillea millefolium, Anemone canadensis, Chamaenerigon, Helianthus scaberrimus, Monarda filifolia, Desmodium illinoense, Solidago nemoralis, Symphyotrichum cordifolium

PERENNIALS
*Note: All perennials in the list are native to Ontario.

FERNS

- Cystopteris bulbifera (bulbifer fern), 1L pot.
- Dryopteris marginalis (marginal shield fern), 1L pot.

GRASSES

- Sporobolus heterolepis (prairie dropseed), 1L pot.
- Deschampsia flexuosa (wavy-hair grass), 1L pot.
- Carex edurens (ivory sedge), 1L pot.

FLOWERING PERENNIALS

- Allium cornutum (nodding onion), 1L pot.
- Erythronium albidum (white wood aster), 1L pot.
- Anemone canadensis (Canada anemone), 1L pot.
- Taraxacum officinale (heart-leaved foamflower), 1L pot.
- Carex edurens (ivory sedge), 1L pot.
- Veronica simplex (narrowleaf veronica), 1L pot.
- Veronica simplex (narrowleaf veronica), 1L pot.
- Anaphalis margaritacea (pearly everlasting), 1L pot.
- Geum triflorum (prairie smoke), 1L pot.
- Geranium maculatum (wild geranium), 1L pot.

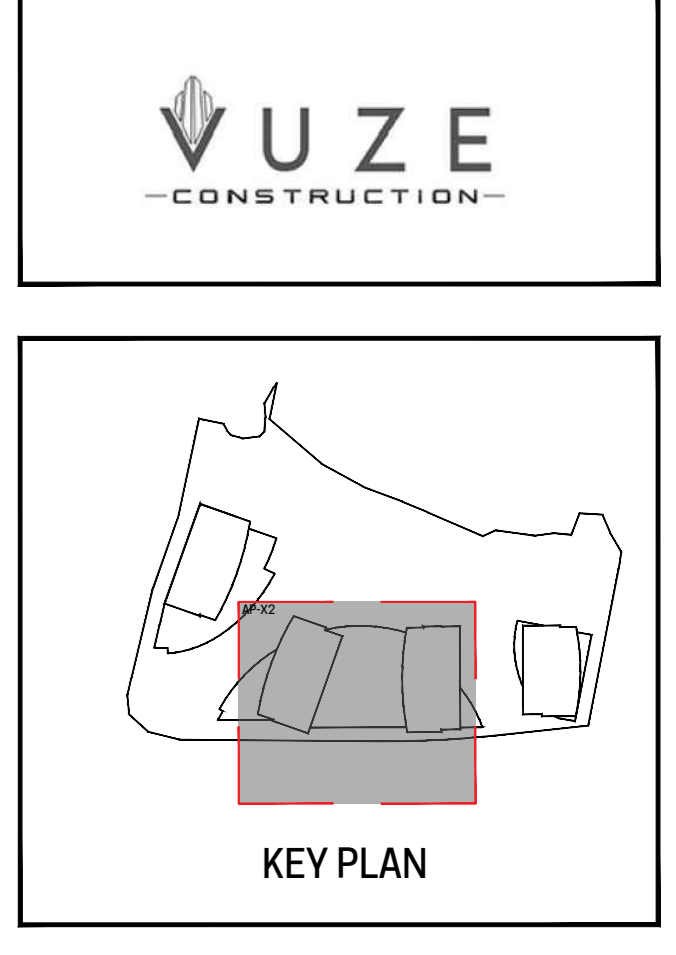
Tree and shrub planting key

PLANTING LIST

No.	Qty	Latin name	Common name	Size	Notes / Comments
ALA 1	10	Andropogon gerardii	Andropogon gerardii	1.5m	
ALA 2	10	Andropogon gerardii	Andropogon gerardii	1.5m	
ALA 3	10	Andropogon gerardii	Andropogon gerardii	1.5m	
ALA 4	10	Andropogon gerardii	Andropogon gerardii	1.5m	
ALA 5	10	Andropogon gerardii	Andropogon gerardii	1.5m	
ALA 6	10	Andropogon gerardii	Andropogon gerardii	1.5m	
ALA 7	10	Andropogon gerardii	Andropogon gerardii	1.5m	
ALA 8	10	Andropogon gerardii	Andropogon gerardii	1.5m	
ALA 9	10	Andropogon gerardii	Andropogon gerardii	1.5m	
ALA 10	10	Andropogon gerardii	Andropogon gerardii	1.5m	
ALA 11	10	Andropogon gerardii	Andropogon gerardii	1.5m	
ALA 12	10	Andropogon gerardii	Andropogon gerardii	1.5m	
ALA 13	10	Andropogon gerardii	Andropogon gerardii	1.5m	
ALA 14	10	Andropogon gerardii	Andropogon gerardii	1.5m	
ALA 15	10	Andropogon gerardii	Andropogon gerardii	1.5m	
ALA 16	10	Andropogon gerardii	Andropogon gerardii	1.5m	
ALA 17	10	Andropogon gerardii	Andropogon gerardii	1.5m	
ALA 18	10	Andropogon gerardii	Andropogon gerardii	1.5m	
ALA 19	10	Andropogon gerardii	Andropogon gerardii	1.5m	
ALA 20	10	Andropogon gerardii	Andropogon gerardii	1.5m	
ALA 21	10	Andropogon gerardii	Andropogon gerardii	1.5m	
ALA 22	10	Andropogon gerardii	Andropogon gerardii	1.5m	
ALA 23	10	Andropogon gerardii	Andropogon gerardii	1.5m	
ALA 24	10	Andropogon gerardii	Andropogon gerardii	1.5m	
ALA 25	10	Andropogon gerardii	Andropogon gerardii	1.5m	
ALA 26	10	Andropogon gerardii	Andropogon gerardii	1.5m	
ALA 27	10	Andropogon gerardii	Andropogon gerardii	1.5m	
ALA 28	10	Andropogon gerardii	Andropogon gerardii	1.5m	
ALA 29	10	Andropogon gerardii	Andropogon gerardii	1.5m	
ALA 30	10	Andropogon gerardii	Andropogon gerardii	1.5m	
ALA 31	10	Andropogon gerardii	Andropogon gerardii	1.5m	
ALA 32	10	Andropogon gerardii	Andropogon gerardii	1.5m	
ALA 33	10	Andropogon gerardii	Andropogon gerardii	1.5m	
ALA 34	10	Andropogon gerardii	Andropogon gerardii	1.5m	
ALA 35	10	Andropogon gerardii	Andropogon gerardii	1.5m	
ALA 36	10	Andropogon gerardii	Andropogon gerardii	1.5m	
ALA 37	10	Andropogon gerardii	Andropogon gerardii	1.5m	
ALA 38	10	Andropogon gerardii	Andropogon gerardii	1.5m	
ALA 39	10	Andropogon gerardii	Andropogon gerardii	1.5m	
ALA 40	10	Andropogon gerardii	Andropogon gerardii	1.5m	
ALA 41	10	Andropogon gerardii	Andropogon gerardii	1.5m	
ALA 42	10	Andropogon gerardii	Andropogon gerardii	1.5m	
ALA 43	10	Andropogon gerardii	Andropogon gerardii	1.5m	
ALA 44	10	Andropogon gerardii	Andropogon gerardii	1.5m	
ALA 45	10	Andropogon gerardii	Andropogon gerardii	1.5m	
ALA 46	10	Andropogon gerardii	Andropogon gerardii	1.5m	
ALA 47	10	Andropogon gerardii	Andropogon gerardii	1.5m	
ALA 48	10	Andropogon gerardii	Andropogon gerardii	1.5m	
ALA 49	10	Andropogon gerardii	Andropogon gerardii	1.5m	
ALA 50	10	Andropogon gerardii	Andropogon gerardii	1.5m	
ALA 51	10	Andropogon gerardii	Andropogon gerardii	1.5m	
ALA 52	10	Andropogon gerardii	Andropogon gerardii	1.5m	
ALA 53	10	Andropogon gerardii	Andropogon gerardii	1.5m	
ALA 54	10	Andropogon gerardii	Andropogon gerardii	1.5m	
ALA 55	10	Andropogon gerardii	Andropogon gerardii	1.5m	
ALA 56	10	Andropogon gerardii	Andropogon gerardii	1.5m	
ALA 57	10	Andropogon gerardii	Andropogon gerardii	1.5m	
ALA 58	10	Andropogon gerardii	Andropogon gerardii	1.5m	
ALA 59	10	Andropogon gerardii	Andropogon gerardii	1.5m	
ALA 60	10	Andropogon gerardii	Andropogon gerardii	1.5m	
ALA 61	10	Andropogon gerardii	Andropogon gerardii	1.5m	
ALA 62	10	Andropogon gerardii	Andropogon gerardii	1.5m	
ALA 63	10	Andropogon gerardii	Andropogon gerardii	1.5m	
ALA 64	10	Andropogon gerardii	Andropogon gerardii	1.5m	
ALA 65	10	Andropogon gerardii	Andropogon gerardii	1.5m	
ALA 66	10	Andropogon gerardii	Andropogon gerardii	1.5m	
ALA 67	10	Andropogon gerardii	Andropogon gerardii	1.5m	
ALA 68	10	Andropogon gerardii	Andropogon gerardii	1.5m	
ALA 69	10	Andropogon gerardii	Andropogon gerardii	1.5m	
ALA 70	10	Andropogon gerardii	Andropogon gerardii	1.5m	
ALA 71	10	Andropogon gerardii	Andropogon gerardii	1.5m	
ALA 72	10	Andropogon gerardii	Andropogon gerardii	1.5m	
ALA 73	10	Andropogon gerardii	Andropogon gerardii	1.5m	
ALA 74	10	Andropogon gerardii	Andropogon gerardii	1.5m	
ALA 75	10	Andropogon gerardii	Andropogon gerardii	1.5m	
ALA 76	10	Andropogon gerardii	Andropogon gerardii	1.5m	
ALA 77	10	Andropogon gerardii	Andropogon gerardii	1.5m	
ALA 78	10	Andropogon gerardii	Andropogon gerardii	1.5m	
ALA 79	10	Andropogon gerardii	Andropogon gerardii	1.5m	
ALA 80	10	Andropogon gerardii	Andropogon gerardii	1.5m	
ALA 81	10	Andropogon gerardii	Andropogon gerardii	1.5m	
ALA 82	10	Andropogon gerardii	Andropogon gerardii	1.5m	
ALA 83	10	Andropogon gerardii	Andropogon gerardii	1.5m	
ALA 84	10	Andropogon gerardii	Andropogon gerardii	1.5m	
ALA 85	10	Andropogon gerardii	Andropogon gerardii	1.5m	
ALA 86	10	Andropogon gerardii	Andropogon gerardii	1.5m	
ALA 87	10	Andropogon gerardii	Andropogon gerardii	1.5m	
ALA 88	10	Andropogon gerardii	Andropogon gerardii	1.5m	
ALA 89	10	Andropogon gerardii	Andropogon gerardii	1.5m	
ALA 90	10	Andropogon gerardii	Andropogon gerardii	1.5m	
ALA 91	10	Andropogon gerardii	Andropogon gerardii	1.5m	
ALA 92	10	Andropogon gerardii	Andropogon gerardii	1.5m	
ALA 93	10	Andropogon gerardii	Andropogon gerardii	1.5m	
ALA 94	10	Andropogon gerardii	Andropogon gerardii	1.5m	
ALA 95	10	Andropogon gerardii	Andropogon gerardii	1.5m	
ALA 96	10	Andropogon gerardii	Andropogon gerardii	1.5m	
ALA 97	10	Andropogon gerardii	Andropogon gerardii	1.5m	
ALA 98	10	Andropogon gerardii	Andropogon gerardii	1.5m	
ALA 99	10	Andropogon gerardii	Andropogon gerardii	1.5m	
ALA 100	10	Andropogon gerardii	Andropogon gerardii	1.5m	

PLANTING LIST

No.	Qty	Latin name	Common name	Size	Notes / Comments
ALA 101	10	Andropogon gerardii	Andropogon gerardii	1.5m	
ALA 102	10	Andropogon gerardii	Andropogon gerardii	1.5m	
ALA 103	10	Andropogon gerardii	Andropogon gerardii	1.5m	
ALA 104	10	Andropogon gerardii	Andropogon gerardii	1.5m	
ALA 105	10	Andropogon gerardii	Andropogon gerardii	1.5m	
ALA 106	10	Andropogon gerardii	Andropogon gerardii	1.5m	
ALA 107	10	Andropogon gerardii	Andropogon gerardii	1.5m	
ALA 108	10	Andropogon gerardii	Andropogon gerardii	1.5m	
ALA 109	10	Andropogon gerardii	Andropogon gerardii	1.5m	
ALA 110	10	Andropogon gerardii	Andropogon gerardii	1.5m	
ALA 111	10	Andropogon gerardii	Andropogon gerardii	1.5m	
ALA 112	10	Andropogon gerardii	Andropogon gerardii	1.5m	
ALA 113	10	Andropogon gerardii	Andropogon gerardii	1.5m	
ALA 114	10	Andropogon gerardii	Andropogon gerardii	1.5m	
ALA 115	10	Andropogon gerardii	Andropogon gerardii	1.5m	
ALA 116	10	Andropogon gerardii	Andropogon gerardii	1.5m	
ALA 117	10	Andropogon gerardii	Andropogon gerardii	1.5m	
ALA 118	10	Andropogon gerardii	Andropogon gerardii	1.5m	
ALA 119	10	Andropogon gerardii	Andropogon gerardii	1.5m	
ALA 120	10	Andropogon gerardii	Andropogon gerardii	1.5m	
ALA 121	10	Andropogon gerardii	Andropogon gerardii	1.5m	
ALA 122	10	Andropogon gerardii	Andropogon gerardii	1.5m	
ALA 123	10	Andropogon gerardii	Andropogon gerardii	1.5m	
ALA 124	10	Andropogon gerardii	Andropogon gerardii	1.5m	
ALA 125	10	Andropogon gerardii	Andropogon gerardii	1.5m	
ALA 126	10	Andropogon gerardii	Andropogon gerardii	1.5m	
ALA 127	10	Andropogon gerardii	Andropogon gerardii	1.5m	
ALA 128	10	Andropogon gerardii	Andropogon gerardii	1.5m	
ALA 129	10	Andropogon gerardii	Andropogon gerardii	1.5m	
ALA 130	10	Andropogon gerardii	Andropogon gerardii	1.5m	
ALA 131	10	Andropogon gerardii	Andropogon gerardii	1.5m	
ALA 132	10	Andropogon gerardii	Andropogon gerardii	1.5m	
ALA 133	10	Andropogon gerardii	Andropogon gerardii	1.5m	
ALA 134	10	Andropogon gerardii	Andropogon gerardii	1.5m	
ALA 135	10	Andropogon gerardii	Andropogon gerardii	1.5m	
ALA 136	10	Andropogon gerardii	Andropogon gerardii	1.5m	
ALA 137	10	Andropogon gerardii	Andropogon gerardii	1.5m	
ALA 138	10	Andropogon gerardii	Andropogon gerardii	1.5m	
ALA 139	10	Andropogon gerardii	Andropogon gerardii	1.5m	
ALA 140	10	Andropogon gerardii	Andropogon gerardii	1.5m	
ALA 141	10	Andropogon gerardii	Andropogon gerardii	1.5m	
ALA 142	10	Andropogon gerardii	Andropogon gerardii	1.5m	
ALA 143	10	Andropogon gerardii	Andropogon gerardii	1.5m	
ALA 144	10	Andropogon gerardii	Andropogon gerardii	1.5m	
ALA 145	10	Andropogon gerardii	Andropogon gerardii	1.5m	
ALA 146	10	Andropogon gerardii	Andropogon gerardii	1.5m	
ALA 147	10	Andropogon gerardii	Andropogon gerardii	1.5m	
ALA 148	10	Andropogon gerardii	Andropogon gerardii	1.5m	
ALA 149	10	Andropogon gerardii	Andropogon gerardii	1.5m	
ALA 150	10	Andropogon gerardii	Andropogon gerardii	1.5m	



Revisions

No.	Description	Appr.	Date
1	For SPA application	S.G.	05/03/2025
2	For SPA application RD1	S.G.	09/25/25
3	For SPA application RD2	S.G.	11/20/25
4	For SPA application RD3	S.G.	02/18/26

DO NOT USE FOR CONSTRUCTION

Notes:

- LOT 30 CONVESSION 1 (OLD SURVEY) GEOGRAPHIC TOWNSHIP OF CUMBERLAND CITY OF OTTAWA, PREPARED BY ANNIS, OSULLIVAN, VOLLEBEK LTD., DATED OCTOBER 15TH, 2024.
- PROPERTY BOUNDARY INFORMATION AND PIN AS WELL AS WETLAND EDGE, PSM 30m BUFFER, AND HAZARD LANDS LIMITS DERIVED FROM PLAN OF SURVEY DATED 15TH, 2024 11TH, AMENDED APRIL 30TH, 2025, BY ANNIS, OSULLIVAN, VOLLEBEK LTD. PLAN 25483-24 M. CHENIER PI L50 C1 OS CUMBERLAND O DS.

- The Contractor must verify all site existing conditions before beginning the work and inform the Project Director of any errors, omissions or contradictions. Existing grades indicated on the plan come from the survey provided by the owner.
- The Contractor must not cut down any existing vegetation without the approval of the Project Director.
- Implementation of the works on site must be approved by the Project Director.
- The Contractor must use the CAD file for implementation of all work.
- The contractor must verify the amounts specified in the schedule and notify the landscape architect of any errors, omissions or contradictions before the close of the bid.

PROJET PAYSAGE

Professional seal

Project name
1015 TWEDDLE ROAD

002-02-25-0038 & 007-12-25-0073 // Plan Number # 15417

Drawing title
PLANTING PLAN

Scale
1:100

Designed by
S. Gallant, G. Dostaler

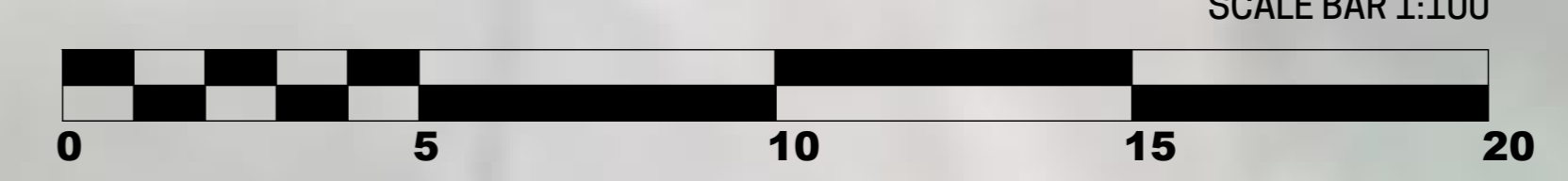
Approved by
V. Suarez, I. Sobral

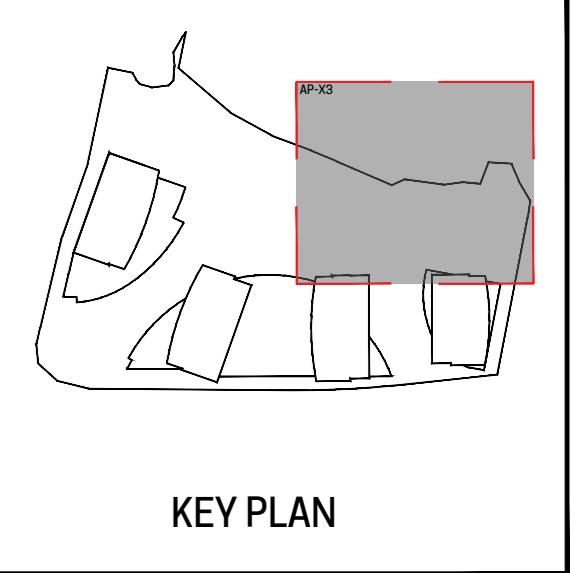
Approved by
S. Gallant

March 2025

AP-32

21-695





Revisions

No.	Description	Appr.	Date
1	For SPA application	S.G.	05/03/2025
2	For SPA application RD1	S.G.	09/25/2025
3	For SPA application RD2	S.G.	11/20/2025
4	For SPA application RD3	S.G.	02/18/2026

DO NOT USE FOR CONSTRUCTION

Notes:

A. LOT 30 CONVESSION 1 (OLD SURVEY) GEOGRAPHIC TOWNSHIP OF CUMBERLAND CITY OF OTTAWA, PREPARED BY ANNIS, OSULLIVAN, VOLLEBECK LTD., DATED OCTOBER 15TH, 2024.

B. PROPERTY BOUNDARY INFORMATION AND PIN AS WELL AS WETLAND EDGE, PSM 30m BUFFER, PATTERSON OF TOP OF SLOPE, 10m SETBACK AND HAZARD LANDS LIMITS DERIVED FROM PLAN OF SURVEY DATED 15TH 2024 11TH AMENDED APRIL 30TH, 2025, BY ANNIS, OSULLIVAN, VOLLEBECK LTD. PLAN 25483-24 M. CHENER PI LISO C1 OS CUMBERLAND O DS.

- The Contractor must verify all site existing conditions before beginning the work and inform the Project Director of any errors, omissions or contradictions.
- Existing grades indicated on the plan come from the survey provided by the owner.
- The Contractor must not cut down any existing vegetation without the approval of the Project Director.
- Implementation of the works on site must be approved by the Project Director.
- The Contractor must use the CAD file for implementation of all work.
- The contractor must verify the amounts specified in the schedule and notify the landscape architect of any errors, omissions or contradictions before the close of the bid.

Professional seal

Project name
1015 TWEDDLE ROAD

002-02-25-0038 & 007-12-25-0073 // Plan Number # 19417

Planting plan
PLANTING PLAN

Scale
1:100

Designed by
S. Gallant, G. Dostaler

Drawn by
V. Suarez, I. Sobral

Approved by
S. Gallant

March 2025

AP-33

21-695

LEGEND

- Limit of work (Site grading limit)
- Property line
- Existing floodline
- Projected floodline
- Wetland edge
- Contour lines
- Proposed deciduous tree and shrub
- Proposed coniferous tree and shrub
- Proposed trees in public domain area
- Grass (turf)

SEEDING

- Mix 1: Floodline zone
Andropogon gerardii, Calamagrostis canadensis, Carex lurida, Carex vaginata, Elymus canadensis, Glycine canadensis, Juncus effusus, Sorghum atrovirens, Verbena hastata, Iris versicolor, Chelone glabra, Actaeopis incarnata
- Mix 2: Rewilding zone
Andropogon gerardii, Carex lurida, Carex vaginata, Elymus canadensis, Achillea millefolium, Agrostis foeniculifera, Symphoricarpos albus, Achillea millefolium
- Mix 3: Pollinator wildflower mix
Achillea millefolium, Actaeopis incarnata, Anemone canadensis, Chamaenerion angustifolium, Helianthus scaberrimus, Monarda filifolia, Desmodium illinoense, Solidago nemoralis, Symphoricarpos albus

PERENNIALS
*Note: All perennials in the list are native to Ontario.

FERNS

- Cystopteris bulbifera (bulbifer fern), 1l. pot.
- Dryopteris marginalis (marginal shield fern), 1l. pot.

GRASSES

- Sporobolus heterolepis (prairie dropseed), 1l. pot.
- Deschampsia flexuosa (wavy-hair grass), 1l. pot.
- Carex edurena (ivory sedge), 1l. pot.

FLOWERING PERENNIALS

- Allium cernuum (nodding onion), 1l. pot.
- Eurybia divaricata (white wood aster), 1l. pot.
- Anemone canadensis (Canada anemone), 1l. pot.
- Taraxacum officinale (heart-leaved foamflower), 1l. pot.
- Centaurea jacobina (lanceleaf coreopsis), 1l. pot.
- Verbena simplex (narrowleaf verben), 1l. pot.
- Anaphalis margaritacea (pearly everlasting), 1l. pot.
- Geum triflorum (prairie smoke), 1l. pot.
- Geranium maculatum (wild geranium), 1l. pot.

Tree and shrub planting key

PLANTING LIST

No.	Qty	Latin name	Common name	Size	Volume / Container
ALA 1	10	Andropogon gerardii	Common reed	1.5m	1.5m
ALA 2	10	Andropogon gerardii	Common reed	1.5m	1.5m
ALA 3	10	Andropogon gerardii	Common reed	1.5m	1.5m
ALA 4	10	Andropogon gerardii	Common reed	1.5m	1.5m
ALA 5	10	Andropogon gerardii	Common reed	1.5m	1.5m
ALA 6	10	Andropogon gerardii	Common reed	1.5m	1.5m
ALA 7	10	Andropogon gerardii	Common reed	1.5m	1.5m
ALA 8	10	Andropogon gerardii	Common reed	1.5m	1.5m
ALA 9	10	Andropogon gerardii	Common reed	1.5m	1.5m
ALA 10	10	Andropogon gerardii	Common reed	1.5m	1.5m
ALA 11	10	Andropogon gerardii	Common reed	1.5m	1.5m
ALA 12	10	Andropogon gerardii	Common reed	1.5m	1.5m
ALA 13	10	Andropogon gerardii	Common reed	1.5m	1.5m
ALA 14	10	Andropogon gerardii	Common reed	1.5m	1.5m
ALA 15	10	Andropogon gerardii	Common reed	1.5m	1.5m
ALA 16	10	Andropogon gerardii	Common reed	1.5m	1.5m
ALA 17	10	Andropogon gerardii	Common reed	1.5m	1.5m
ALA 18	10	Andropogon gerardii	Common reed	1.5m	1.5m
ALA 19	10	Andropogon gerardii	Common reed	1.5m	1.5m
ALA 20	10	Andropogon gerardii	Common reed	1.5m	1.5m
ALA 21	10	Andropogon gerardii	Common reed	1.5m	1.5m
ALA 22	10	Andropogon gerardii	Common reed	1.5m	1.5m
ALA 23	10	Andropogon gerardii	Common reed	1.5m	1.5m
ALA 24	10	Andropogon gerardii	Common reed	1.5m	1.5m
ALA 25	10	Andropogon gerardii	Common reed	1.5m	1.5m
ALA 26	10	Andropogon gerardii	Common reed	1.5m	1.5m
ALA 27	10	Andropogon gerardii	Common reed	1.5m	1.5m
ALA 28	10	Andropogon gerardii	Common reed	1.5m	1.5m
ALA 29	10	Andropogon gerardii	Common reed	1.5m	1.5m
ALA 30	10	Andropogon gerardii	Common reed	1.5m	1.5m
ALA 31	10	Andropogon gerardii	Common reed	1.5m	1.5m
ALA 32	10	Andropogon gerardii	Common reed	1.5m	1.5m
ALA 33	10	Andropogon gerardii	Common reed	1.5m	1.5m
ALA 34	10	Andropogon gerardii	Common reed	1.5m	1.5m
ALA 35	10	Andropogon gerardii	Common reed	1.5m	1.5m
ALA 36	10	Andropogon gerardii	Common reed	1.5m	1.5m
ALA 37	10	Andropogon gerardii	Common reed	1.5m	1.5m
ALA 38	10	Andropogon gerardii	Common reed	1.5m	1.5m
ALA 39	10	Andropogon gerardii	Common reed	1.5m	1.5m
ALA 40	10	Andropogon gerardii	Common reed	1.5m	1.5m
ALA 41	10	Andropogon gerardii	Common reed	1.5m	1.5m
ALA 42	10	Andropogon gerardii	Common reed	1.5m	1.5m
ALA 43	10	Andropogon gerardii	Common reed	1.5m	1.5m
ALA 44	10	Andropogon gerardii	Common reed	1.5m	1.5m
ALA 45	10	Andropogon gerardii	Common reed	1.5m	1.5m
ALA 46	10	Andropogon gerardii	Common reed	1.5m	1.5m
ALA 47	10	Andropogon gerardii	Common reed	1.5m	1.5m
ALA 48	10	Andropogon gerardii	Common reed	1.5m	1.5m
ALA 49	10	Andropogon gerardii	Common reed	1.5m	1.5m
ALA 50	10	Andropogon gerardii	Common reed	1.5m	1.5m
ALA 51	10	Andropogon gerardii	Common reed	1.5m	1.5m
ALA 52	10	Andropogon gerardii	Common reed	1.5m	1.5m
ALA 53	10	Andropogon gerardii	Common reed	1.5m	1.5m
ALA 54	10	Andropogon gerardii	Common reed	1.5m	1.5m
ALA 55	10	Andropogon gerardii	Common reed	1.5m	1.5m
ALA 56	10	Andropogon gerardii	Common reed	1.5m	1.5m
ALA 57	10	Andropogon gerardii	Common reed	1.5m	1.5m
ALA 58	10	Andropogon gerardii	Common reed	1.5m	1.5m
ALA 59	10	Andropogon gerardii	Common reed	1.5m	1.5m
ALA 60	10	Andropogon gerardii	Common reed	1.5m	1.5m
ALA 61	10	Andropogon gerardii	Common reed	1.5m	1.5m
ALA 62	10	Andropogon gerardii	Common reed	1.5m	1.5m
ALA 63	10	Andropogon gerardii	Common reed	1.5m	1.5m
ALA 64	10	Andropogon gerardii	Common reed	1.5m	1.5m
ALA 65	10	Andropogon gerardii	Common reed	1.5m	1.5m
ALA 66	10	Andropogon gerardii	Common reed	1.5m	1.5m
ALA 67	10	Andropogon gerardii	Common reed	1.5m	1.5m
ALA 68	10	Andropogon gerardii	Common reed	1.5m	1.5m
ALA 69	10	Andropogon gerardii	Common reed	1.5m	1.5m
ALA 70	10	Andropogon gerardii	Common reed	1.5m	1.5m
ALA 71	10	Andropogon gerardii	Common reed	1.5m	1.5m
ALA 72	10	Andropogon gerardii	Common reed	1.5m	1.5m
ALA 73	10	Andropogon gerardii	Common reed	1.5m	1.5m
ALA 74	10	Andropogon gerardii	Common reed	1.5m	1.5m
ALA 75	10	Andropogon gerardii	Common reed	1.5m	1.5m
ALA 76	10	Andropogon gerardii	Common reed	1.5m	1.5m
ALA 77	10	Andropogon gerardii	Common reed	1.5m	1.5m
ALA 78	10	Andropogon gerardii	Common reed	1.5m	1.5m
ALA 79	10	Andropogon gerardii	Common reed	1.5m	1.5m
ALA 80	10	Andropogon gerardii	Common reed	1.5m	1.5m
ALA 81	10	Andropogon gerardii	Common reed	1.5m	1.5m
ALA 82	10	Andropogon gerardii	Common reed	1.5m	1.5m
ALA 83	10	Andropogon gerardii	Common reed	1.5m	1.5m
ALA 84	10	Andropogon gerardii	Common reed	1.5m	1.5m
ALA 85	10	Andropogon gerardii	Common reed	1.5m	1.5m
ALA 86	10	Andropogon gerardii	Common reed	1.5m	1.5m
ALA 87	10	Andropogon gerardii	Common reed	1.5m	1.5m
ALA 88	10	Andropogon gerardii	Common reed	1.5m	1.5m
ALA 89	10	Andropogon gerardii	Common reed	1.5m	1.5m
ALA 90	10	Andropogon gerardii	Common reed	1.5m	1.5m
ALA 91	10	Andropogon gerardii	Common reed	1.5m	1.5m
ALA 92	10	Andropogon gerardii	Common reed	1.5m	1.5m
ALA 93	10	Andropogon gerardii	Common reed	1.5m	1.5m
ALA 94	10	Andropogon gerardii	Common reed	1.5m	1.5m
ALA 95	10	Andropogon gerardii	Common reed	1.5m	1.5m
ALA 96	10	Andropogon gerardii	Common reed	1.5m	1.5m
ALA 97	10	Andropogon gerardii	Common reed	1.5m	1.5m
ALA 98	10	Andropogon gerardii	Common reed	1.5m	1.5m
ALA 99	10	Andropogon gerardii	Common reed	1.5m	1.5m
ALA 100	10	Andropogon gerardii	Common reed	1.5m	1.5m

PLANTING LIST

No.	Qty	Latin name	Common name	Size	Volume / Container
ALA 1	10	Andropogon gerardii	Common reed	1.5m	1.5m
ALA 2	10	Andropogon gerardii	Common reed	1.5m	1.5m
ALA 3	10	Andropogon gerardii	Common reed	1.5m	1.5m
ALA 4	10	Andropogon gerardii	Common reed	1.5m	1.5m
ALA 5	10	Andropogon gerardii	Common reed	1.5m	1.5m
ALA 6	10	Andropogon gerardii	Common reed	1.5m	1.5m
ALA 7	10	Andropogon gerardii	Common reed	1.5m	1.5m
ALA 8	10	Andropogon gerardii	Common reed	1.5m	1.5m
ALA 9	10	Andropogon gerardii	Common reed	1.5m	1.5m
ALA 10	10	Andropogon gerardii	Common reed	1.5m	1.5m
ALA 11	10	Andropogon gerardii	Common reed	1.5m	1.5m
ALA 12	10	Andropogon gerardii	Common reed	1.5m	1.5m
ALA 13	10	Andropogon gerardii	Common reed	1.5m	1.5m
ALA 14	10	Andropogon gerardii	Common reed	1.5m	1.5m
ALA 15	10	Andropogon gerardii	Common reed	1.5m	1.5m
ALA 16	10	Andropogon gerardii	Common reed	1.5m	1.5m
ALA 17	10	Andropogon gerardii	Common reed	1.5m	1.5m
ALA 18	10	Andropogon gerardii	Common reed	1.5m	1.5m
ALA 19	10	Andropogon gerardii	Common reed	1.5m	1.5m
ALA 20	10	Andropogon gerardii	Common reed	1.5m	1.5m
ALA 21	10	Andropogon gerardii	Common reed	1.5m	1.5m
ALA 22	10	Andropogon gerardii	Common reed	1.5m	1.5m
ALA 23	10	Andropogon gerardii	Common reed	1.5m	1.5m
ALA 24	10	Andropogon gerardii	Common reed	1.5m	1.5m
ALA 25	10	Andropogon gerardii	Common reed	1.5m	1.5m
ALA 26	10	Andropogon gerardii	Common reed	1.5m	1.5m
ALA 27	10	Andropogon gerardii	Common reed	1.5m	1.5m
ALA 28	10	Andropogon gerardii	Common reed	1.5m	1.5m
ALA 29	10	Andropogon gerardii	Common reed	1.5m	1.5m
ALA 30	10	Andropogon gerardii	Common reed	1.5m	1.5m
ALA 31	10	Andropogon gerardii	Common reed	1.5m	1.5m
ALA 32	10	Andropogon gerardii	Common reed	1.5m	1.5m
ALA 33	10	Andropogon gerardii	Common reed	1.5m	1.5m
ALA 34	10	Andropogon gerardii	Common reed	1.5m	1.5m
ALA 35	10	Andropogon gerardii	Common reed	1.5m	1.5m
ALA 36	10	Andropogon gerardii	Common reed	1.5m	1.5m
ALA 37	10	Andropogon gerardii	Common reed	1.5m	1.5m
ALA 38	10	Andropogon gerardii	Common reed	1.5m	1.5m
ALA 39	10	Andropogon gerardii	Common reed	1.5m	1.5m
ALA 40	10	Andropogon gerardii	Common reed	1.5m	1.5m
ALA 41	10	Andropogon gerardii	Common reed	1.5m	1.5m
ALA 42	10	Andropogon gerardii	Common reed	1.5m	1.5m
ALA 43	10	Andropogon gerardii	Common reed	1.5m	1.5m
ALA 44	10	Andropogon gerardii	Common reed	1.5m	1.5m
ALA 45	10	Andropogon gerardii	Common reed	1.5m	1.5m
ALA 46	10	Andropogon gerardii	Common reed	1.5m	1.5m
ALA 47	10	Andropogon gerardii	Common reed	1.5m	1.5m
ALA 48	10	Andropogon gerardii	Common reed	1.5m	1.5m
ALA 49	10	Andropogon gerardii	Common reed	1.5m	1.5m
ALA 50	10	Andropogon gerardii	Common reed	1.5m	1.5m
ALA 51	10	Andropogon gerardii	Common reed	1.5m	1.5m
ALA 52	10	Andropogon gerardii	Common reed	1.5m</	

