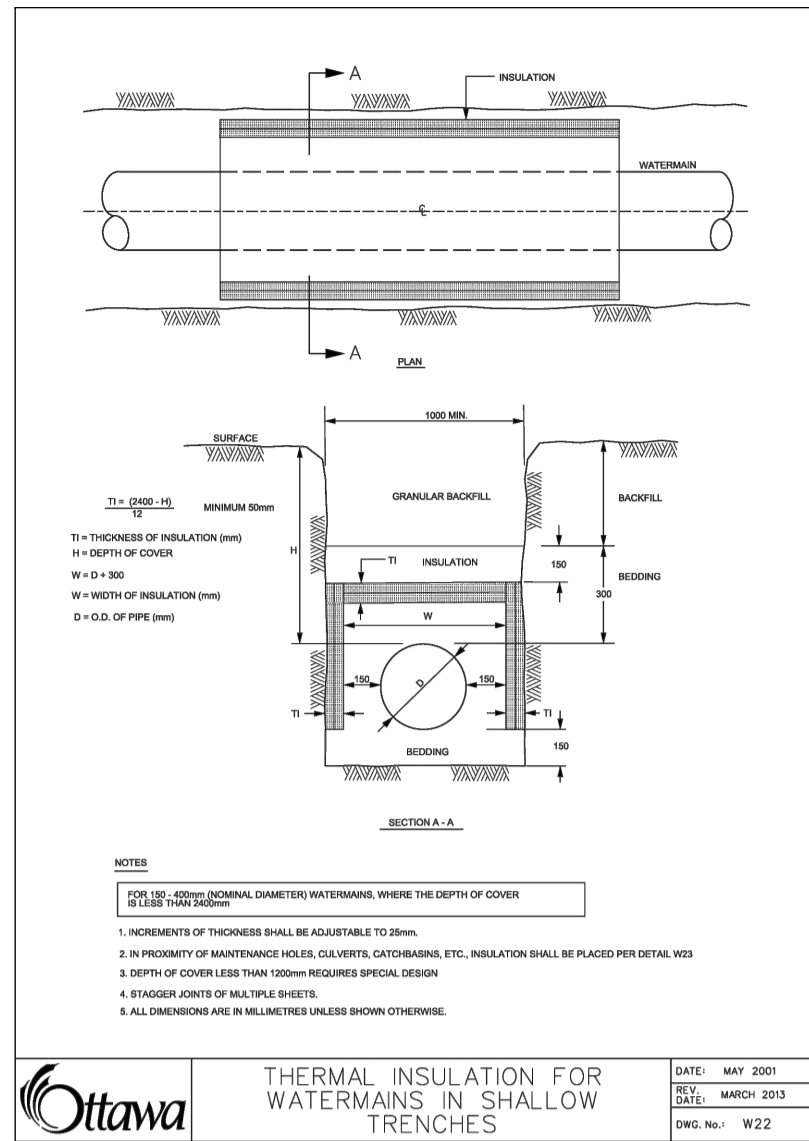
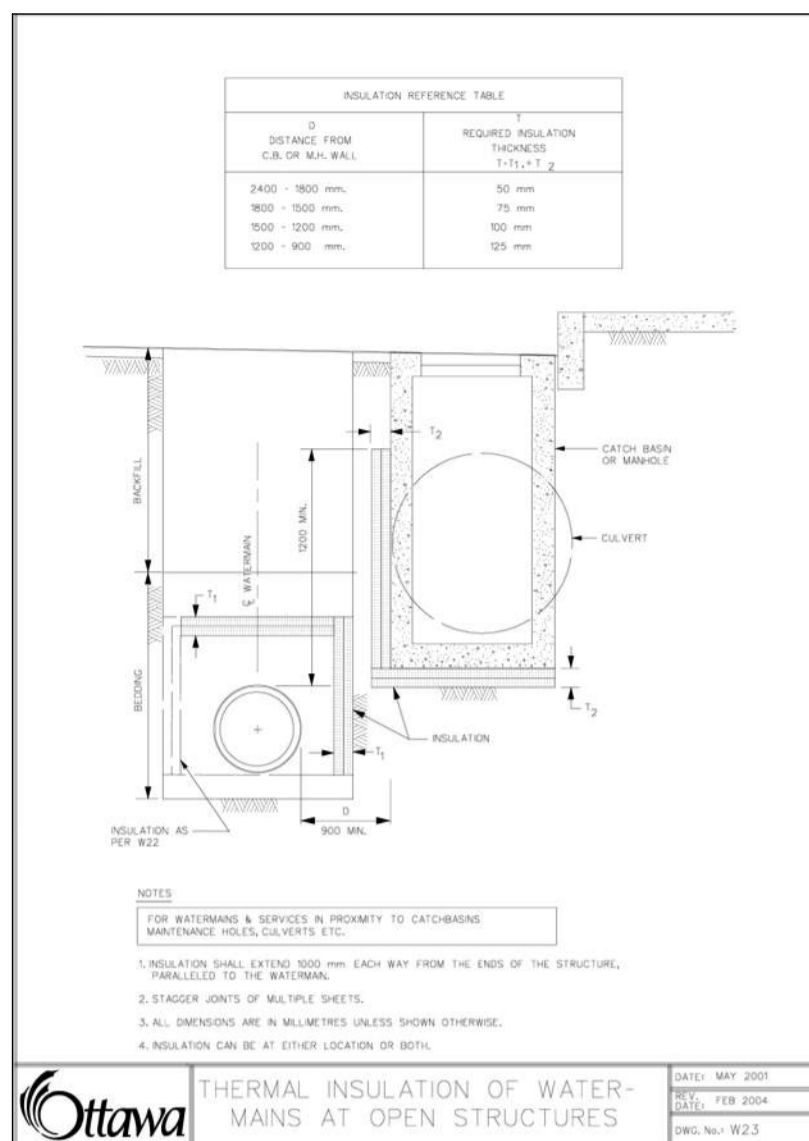


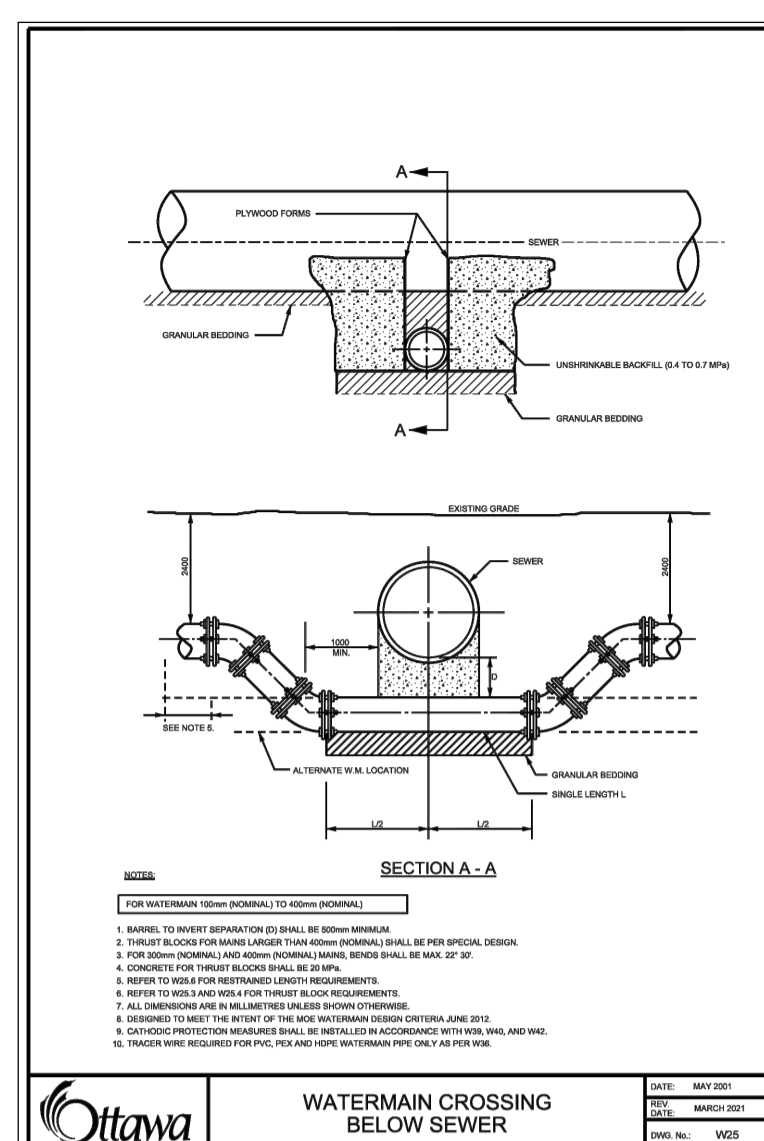
CIRCULAR CHAMBER GATE VALVES
 DATE: MAY 2001
 REV: MARCH 2004
 PROJ. NO.: W22
 SHEET NO.: 101



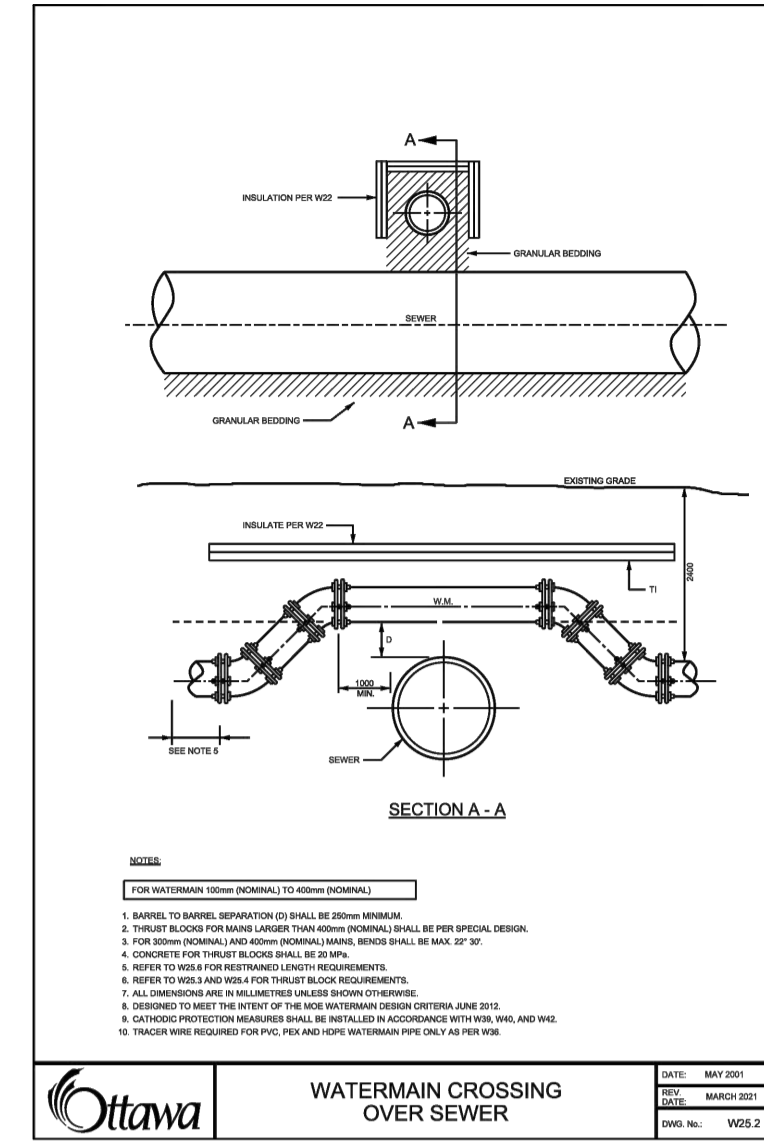
THERMAL INSULATION FOR WATERMAINS IN SHALLOW TRENCHES
 DATE: MAY 2001
 REV: MARCH 2004
 PROJ. NO.: W22
 SHEET NO.: 102



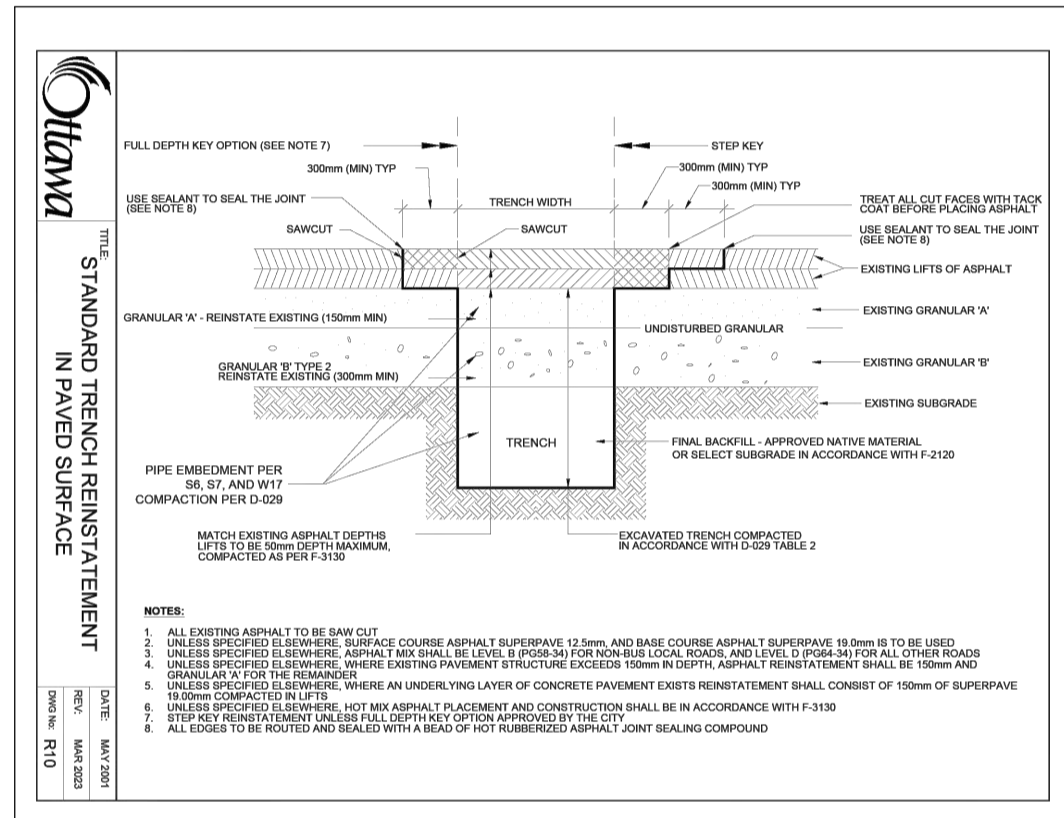
THERMAL INSULATION OF WATERMAINS AT OPEN STRUCTURES
 DATE: MAY 2001
 REV: MARCH 2004
 PROJ. NO.: W22
 SHEET NO.: 103



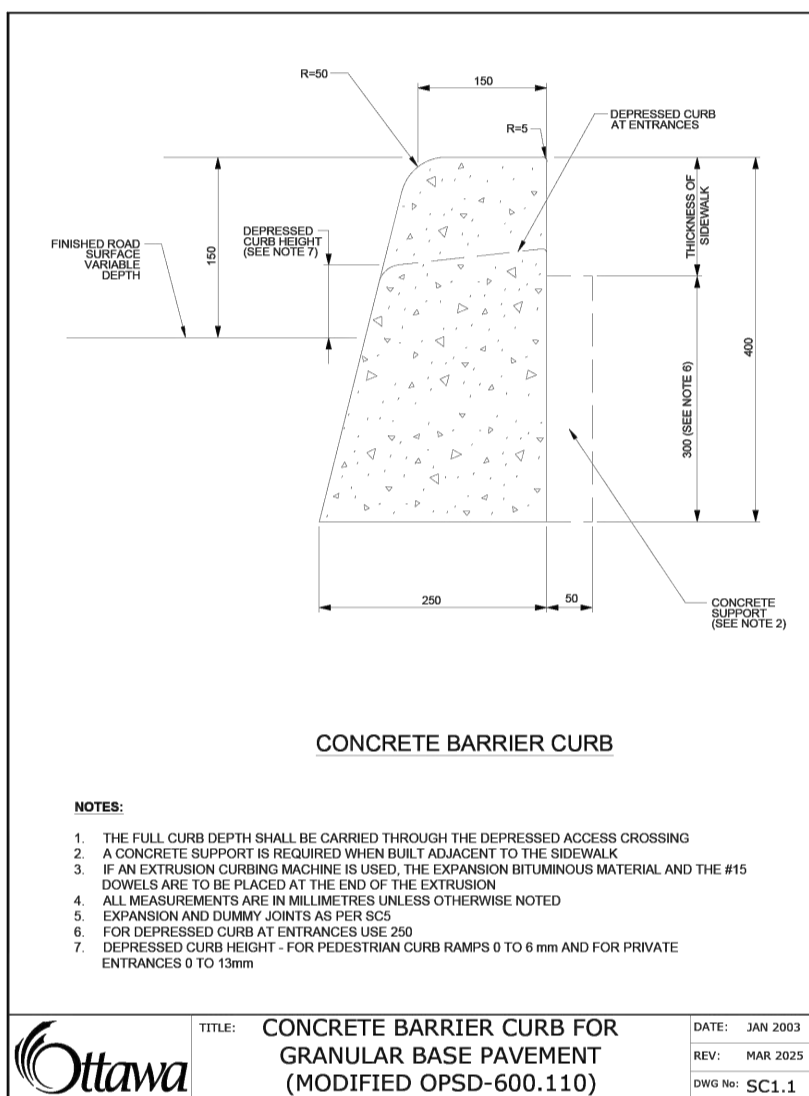
WATERMAIN CROSSING BELOW SEWER
 DATE: MAY 2001
 REV: MARCH 2004
 PROJ. NO.: W22
 SHEET NO.: 104



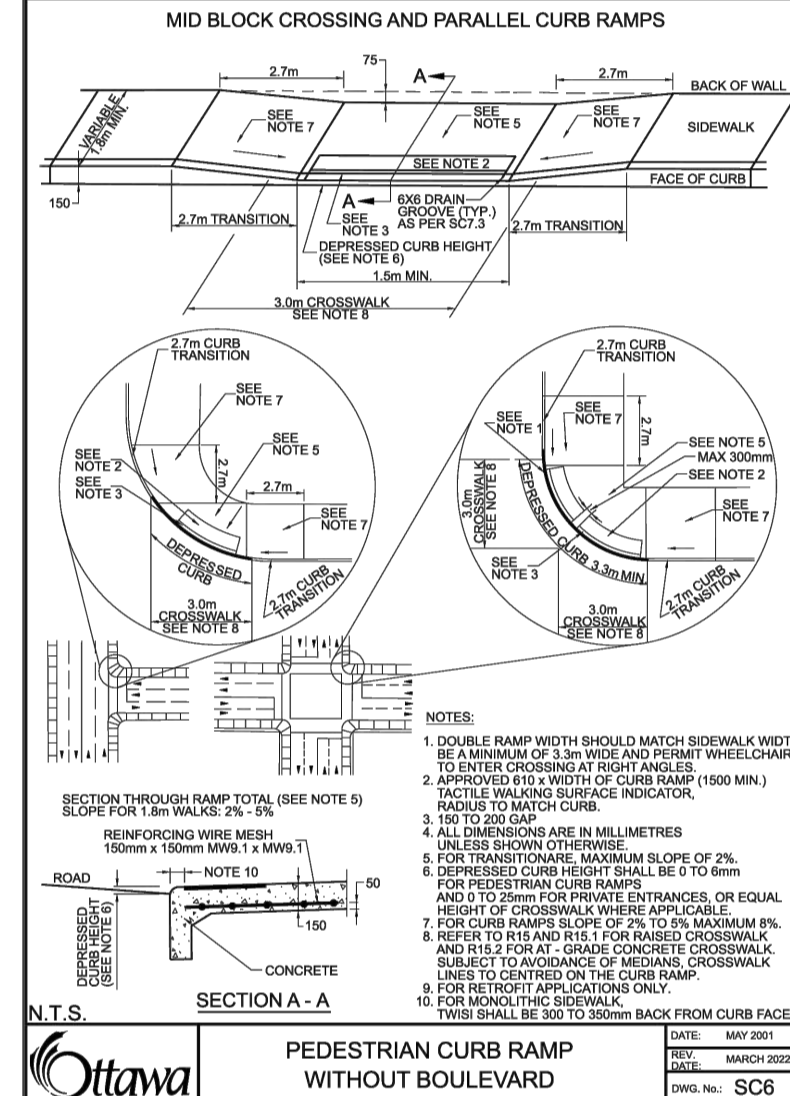
WATERMAIN CROSSING OVER SEWER
 DATE: MAY 2001
 REV: MARCH 2004
 PROJ. NO.: W22
 SHEET NO.: 105



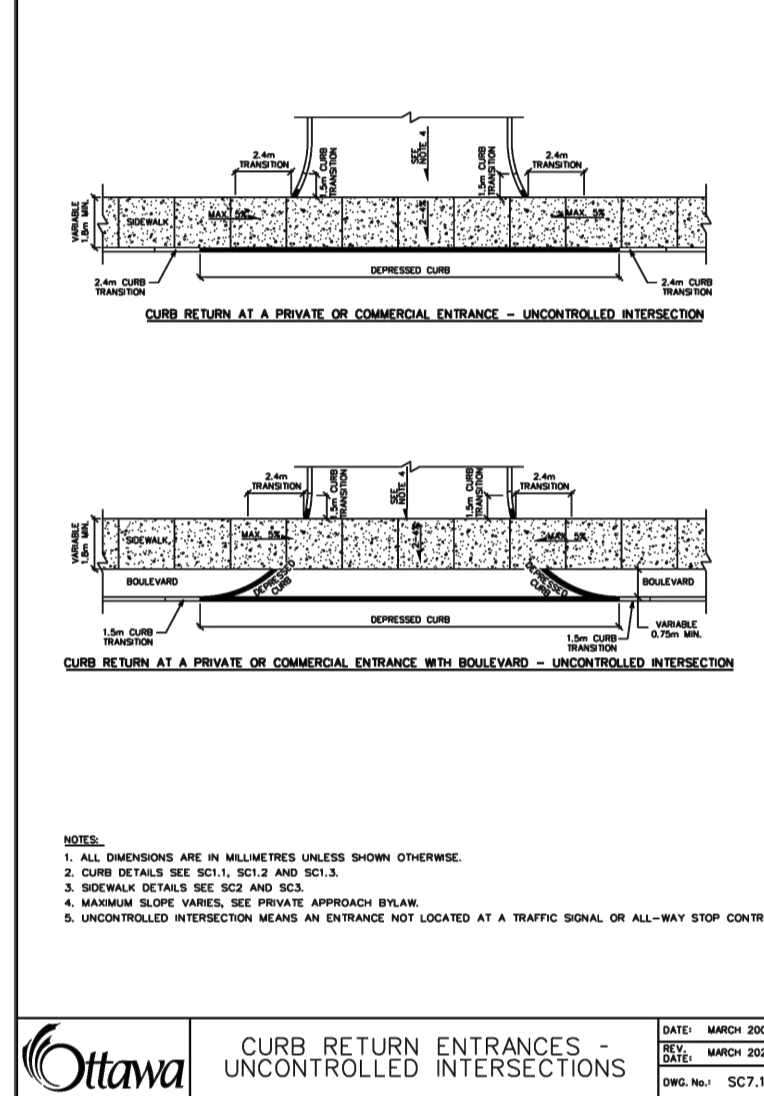
STANDARD TRENCH REINFORCEMENT IN TRENCHES
 DATE: MAY 2001
 REV: MARCH 2004
 PROJ. NO.: W22
 SHEET NO.: 106



CONCRETE BARRIER CURB FOR GRANULAR BASE PAVEMENT (MODIFIED OPSD-600.110)
 DATE: JAN 2003
 REV: MAR 2005
 PROJ. NO.: SC1.1
 SHEET NO.: 107



MID BLOCK CROSSING AND PARALLEL CURB RAMPS
 DATE: MAY 2001
 REV: MARCH 2002
 PROJ. NO.: SC6
 SHEET NO.: 108



CURB RETURN ENTRANCES - UNCONTROLLED INTERSECTIONS
 DATE: MARCH 2007
 REV: MARCH 2021
 PROJ. NO.: SC7.1
 SHEET NO.: 109

NOTE: THE POSITION OF ALL POLE LINES, CONDUITS, WATERMAINS, SEWERS AND OTHER UNDERGROUND AND OVERGROUND UTILITIES AND STRUCTURES IS NOT NECESSARILY SHOWN ON THE CONTRACT DRAWINGS, AND WHERE SHOWN, THE ACCURACY OF THE POSITION OF SUCH UTILITIES AND STRUCTURES IS NOT GUARANTEED. BEFORE STARTING WORK, DETERMINE THE EXACT LOCATION OF ALL SUCH UTILITIES AND STRUCTURES AND ASSUME ALL LIABILITY FOR DAMAGE TO THEM.

No.	REVISION	DATE	BY	No.	REVISION	DATE	BY
11.	REVISED USFS AND SERVICE INVERTS	MAR 11/2026	ARM	8.	ISSUED FOR CONSTRUCTION	JAN 23/2026	ARM
10.	REVISED ISSUED FOR CONSTRUCTION	FEB 27/2026	ARM	7.	REVISED PER LANDSCAPE PLAN	DEC 03/25	ARM
9.	REVISED TO ACCOMMODATE GARBAGE ENCLOSURE	FEB 24/2026	ARM	6.	REVISED PER CITY COMMENTS	NOV 18/25	ARM
				5.	REVISED PER RETAINING WALL ALTERATIONS	OCT 07/25	GJM
				4.	ADDITION OF GEOTECHNICAL RECOMMENDATIONS	AUG 19/25	GJM
				3.	REVISED PER CITY COMMENTS	AUG 12/25	GJM
				2.	REVISED PER COMPLETENESS REVIEW COMMENTS	MAY 09/25	GJM
				1.	ISSUED FOR SITE PLAN APPLICATION	MARCH 21/25	GJM

DESIGN	SCALE
ARM/AM	AS SHOWN
ARM	
ARM/CJ/AM	
ARM	
GJM	

DESIGN: ARM/AM
 CHECKED: ARM
 DRAWN: ARM/CJ/AM
 CHECKED: ARM
 APPROVED: GJM

NOVATECH
 Engineers, Planners & Landscape Architects
 Suite 200, 240 Michael Cowpland Drive
 Ottawa, Ontario, Canada K2M 1P6
 Telephone: (613) 254-9643
 Facsimile: (613) 254-5867
 Website: www.novatech-eng.com

LOCATION: 1101 SPOOR STREET, CITY OF OTTAWA, COPPERWOOD FLATS - BLOCK 125
 DRAWING NAME: NOTES AND DETAILS
 PROJECT NO.: 122144
 REV: REV#11
 DRAWING NO.: 122144-ND2
 # 19381